

—— LONE STAR CIRCLE OF CARE ——

Presentation to
African American Resource Advisory Commission

Rebecca Sorensen, MPH, Program Director

October 4, 2022

AGENDA

1

LONE STAR CIRCLE OF CARE –
BIG PINK BUS

2

COMMENTS AND QUESTIONS

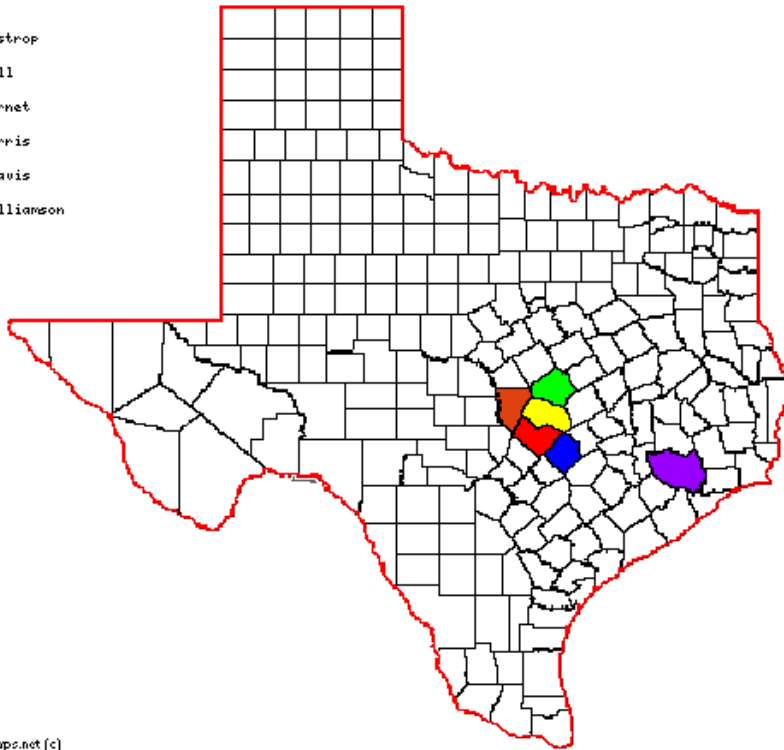
LONE STAR CIRCLE OF CARE

- Primary and integrated behavioral health care provider
- Then: founded in 2001 in Georgetown, Texas as a single clinic
- Now: large clinical system with 27 physical locations and a mobile unit in 6 counties in Texas
- Private 501(c)(3) nonprofit entity with the Federally Qualified Health Center (FQHC) designation
- Administrative headquarters is in Georgetown

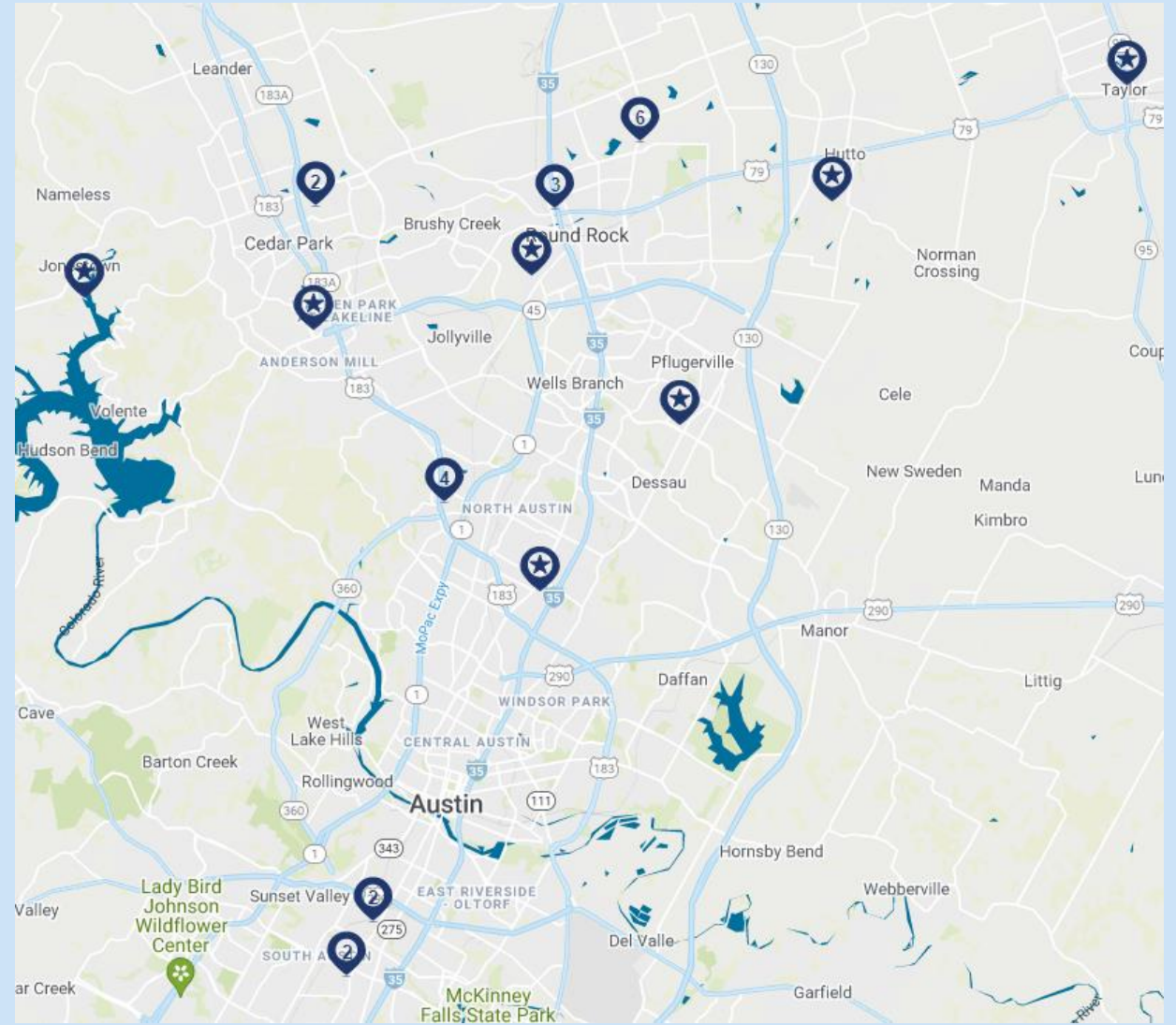
27 Locations in 6 Counties, 1 Mobile Unit (Central Texas)

LSCC

-  - Bastrop
-  - Bell
-  - Burnet
-  - Harris
-  - Travis
-  - Williamson



Source: diymaps.net (c)



LSCC MISSION, VISION & VALUES

MISSION

Lone Star Circle of Care provides exceptional and accessible patient centered healthcare for our Texas neighbors

VISION

We will eliminate health inequalities to facilitate wellness and optimal living for all, helping strengthen our communities



VALUES

COMPASSION

INTEGRITY

RESPECT

SERVICE

INNOVATION

EXCELLENCE

LSCC Services

Family Medicine

Pediatrics

Senior Care

Convenient Care

OB/GYN

Behavioral & Mental Health

PrEP

Virtual Visits

School-based Care

Dental

Optometry

Pharmacy

Mobile Mammography

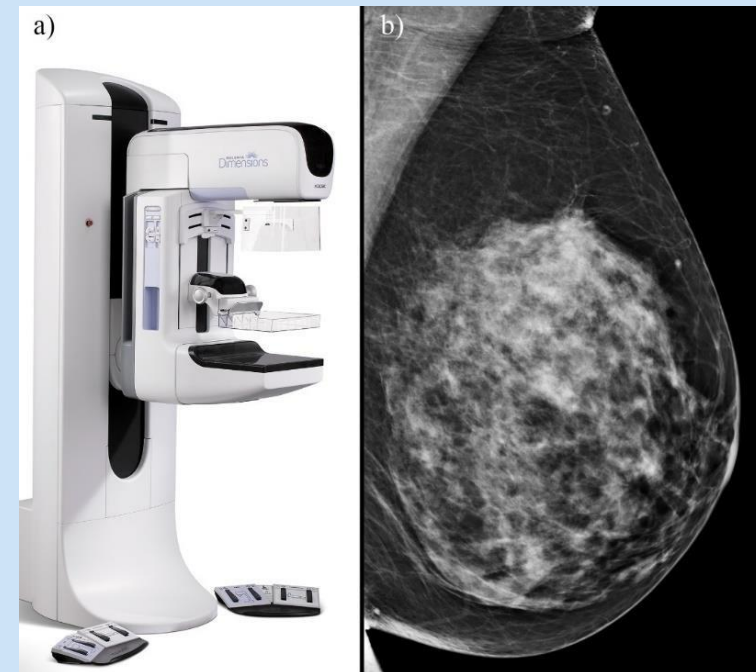
Annually, LSCC provides more than 355,000 visits to more than 100,000 unique patients.

Figures are rounded

Mobile Mammography – Big Pink Bus

844-PINK BUS

bigpinkbus@lscctx.org



Mammogram = x-ray picture of the breast used to screen for breast cancer

Mobile Mammography – Big Pink Bus

History & Data

- Formerly operated by Ascension Seton
- Donated to LSCC in December 2020
- Services began July 2021
- 2,022 screening mammograms provided
- >22 unique site locations (LSCC clinics + community partner sites)
- >160 screening events
- 3 cancers found



Mobile Mammography – Big Pink Bus

Patient Eligibility

- Age 40 and older
- Uninsured, or have coverage from MAP, MAP Basic, or select commercial insurance
- Have not had a mammogram in the last 12 months
- Not pregnant or breastfeeding
- Not experiencing breast issues such as lumps, discharge, or pain
- Can independently walk up and down stairs



Mobile Mammography – Big Pink Bus

Patient Profile

- >50% age 50+
- >50% at or below 100% FPL
- >65% identify as Hispanic
- >50% Spanish as preferred language
- 6.5% Black or African American



Mobile Mammography – Big Pink Bus

Patient Base

- Existing LSCC patients – outreach by zip code
- Community partners – drawn from local community
- General community – media, word of mouth



Mobile Mammography – Big Pink Bus

Breast Cancer Racial Disparity

- Breast cancer incidence rates among Black and white women are comparable
- Breast cancer mortality rates are disproportionately higher among Black women



Source:
Breast Cancer Research Foundation - <https://www.bcrf.org/blog/black-women-and-breast-cancer-why-disparities-persist-and-how-end-them/>
Susan G Komen - <https://www.komen.org/breast-cancer/risk-factor/race-ethnicity/>
Centers for Disease Control and Prevention - <https://www.cdc.gov/mmwr/volumes/65/wr/mm6540a1.htm>

Mobile Mammography – Big Pink Bus

Data - Breast Cancer Incidence

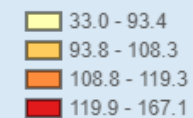
Age-Adjusted Invasive Cancer Incidence Rates in Texas

Breast, Female, 2015 - 2019

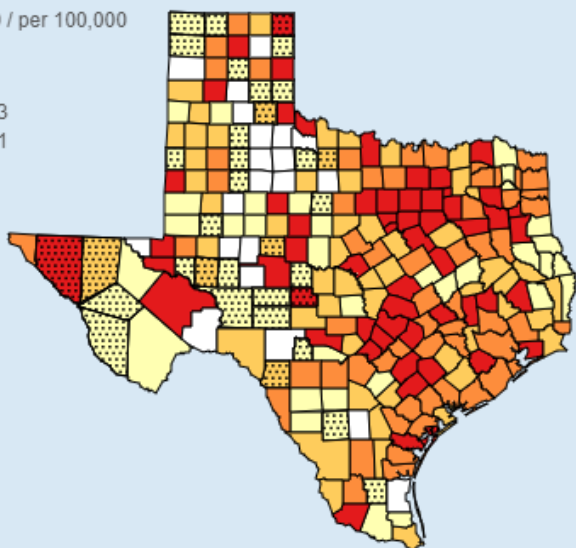
By County

Age-Adjusted to the 2000 U.S. Standard Population

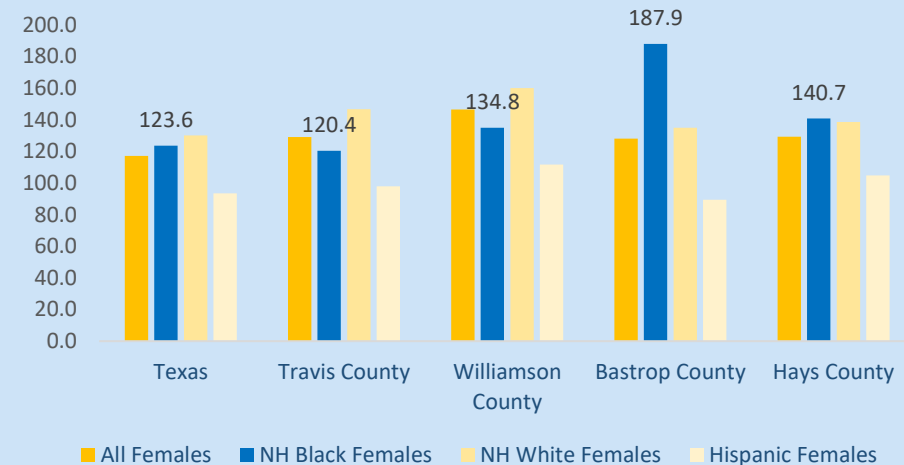
Texas Rate: 117.0 / per 100,000



Unstable
Risk Population
less than 1000

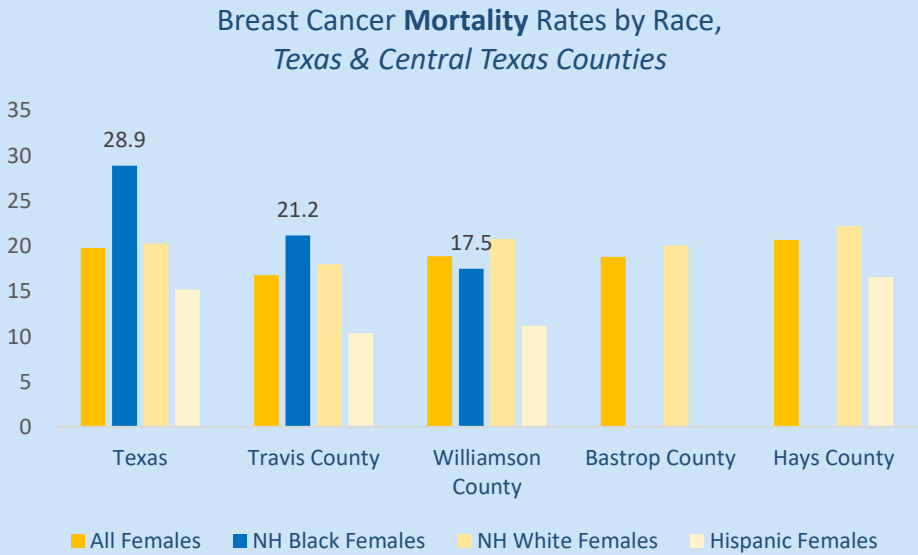
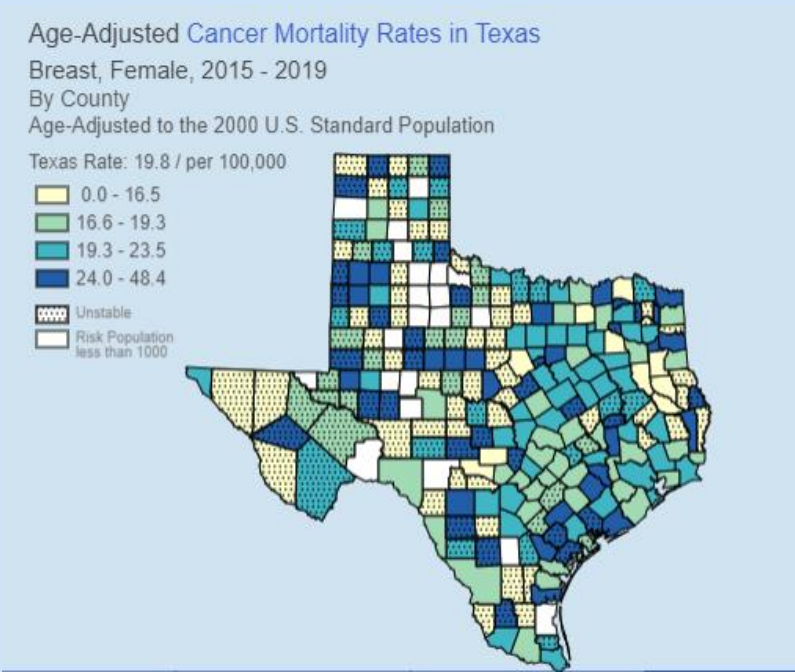


Breast Cancer Incidence Rates by Race, Texas & Central Texas Counties



Mobile Mammography – Big Pink Bus

Data - Breast Cancer Mortality



Source: <https://www.cancer-rates.info/tx/>

Mobile Mammography – Big Pink Bus

How to Help

- Spread the word!
- Community partner site recommendations – host sites
- Community outreach recommendations

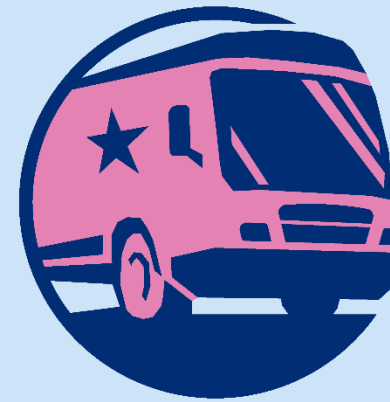


Mobile Mammography — Big Pink Bus

844-PINK BUS

bigpinkbus@lscctx.org

LONE STAR CIRCLE OF CARE
BIG PINK BUS
MAMMOGRAMS ON THE MOVE



Early detection of breast cancer saves lives!

Questions?

Rebecca Sorensen, MPH
Program Director
rsorensen@lscctx.org

Check us out at www.lonestarcares.org