



City of Austin

Housing and Planning Department

P.O. Box 1088, Austin, TX 78767 -1088

(512) 974-3100 ♦ Fax (512) 974-3112 ♦ www.cityofaustin.org/housing

MEMORANDUM

TO: Todd W. Shaw, Chair &
Planning Commission Members

FROM: Maureen Meredith, Senior Planner, Inclusive Planning Division
Heather Chaffin, Senior Planner, Current Planning Division
Housing and Planning Department

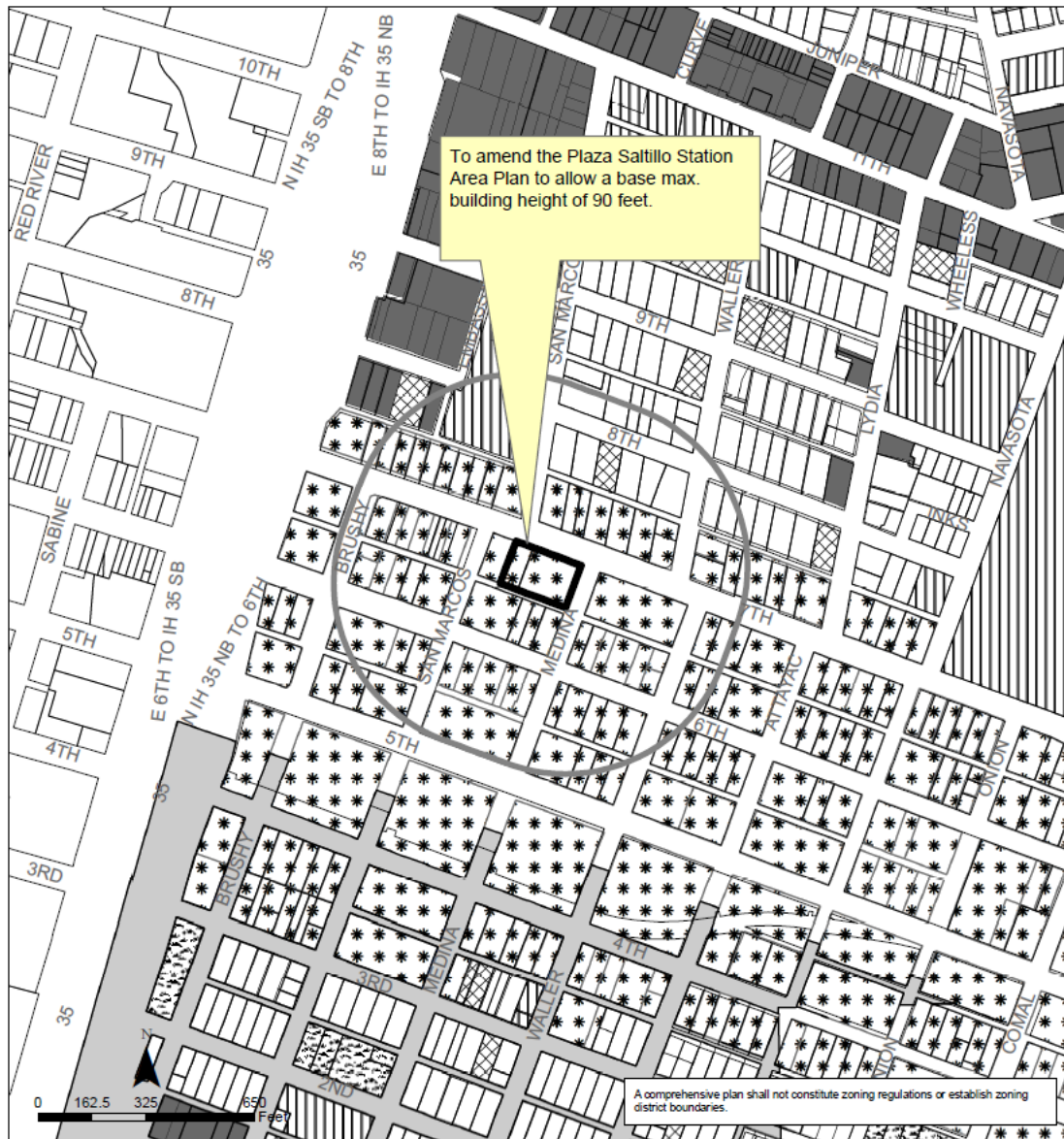
DATE: February 21, 2023

RE: NPA-2022-0009.01_1007 and 1021 E. 7th Street
Central East Austin Planning Area/Plaza Saltillo TOD Station Area Plan
and Regulating Plan

Staff requests a postponement of the above referenced case from the **February 28, 2023** Planning Commission hearing to the **March 14, 2023** hearing date. Staff needs additional time to review the applications.

The postponement request was made in a timely manner and meets the Planning Commission's policy.

Attachments: Plan Amendment Map
Zoning Map



Central East Austin Neighborhood Planning Area NPA-2022-0009.01

This product is for informational purposes and may not have been prepared for or be suitable for legal, engineering, or surveying purposes. It does not represent an on-the-ground survey and represents only the approximate relative location of property boundaries.

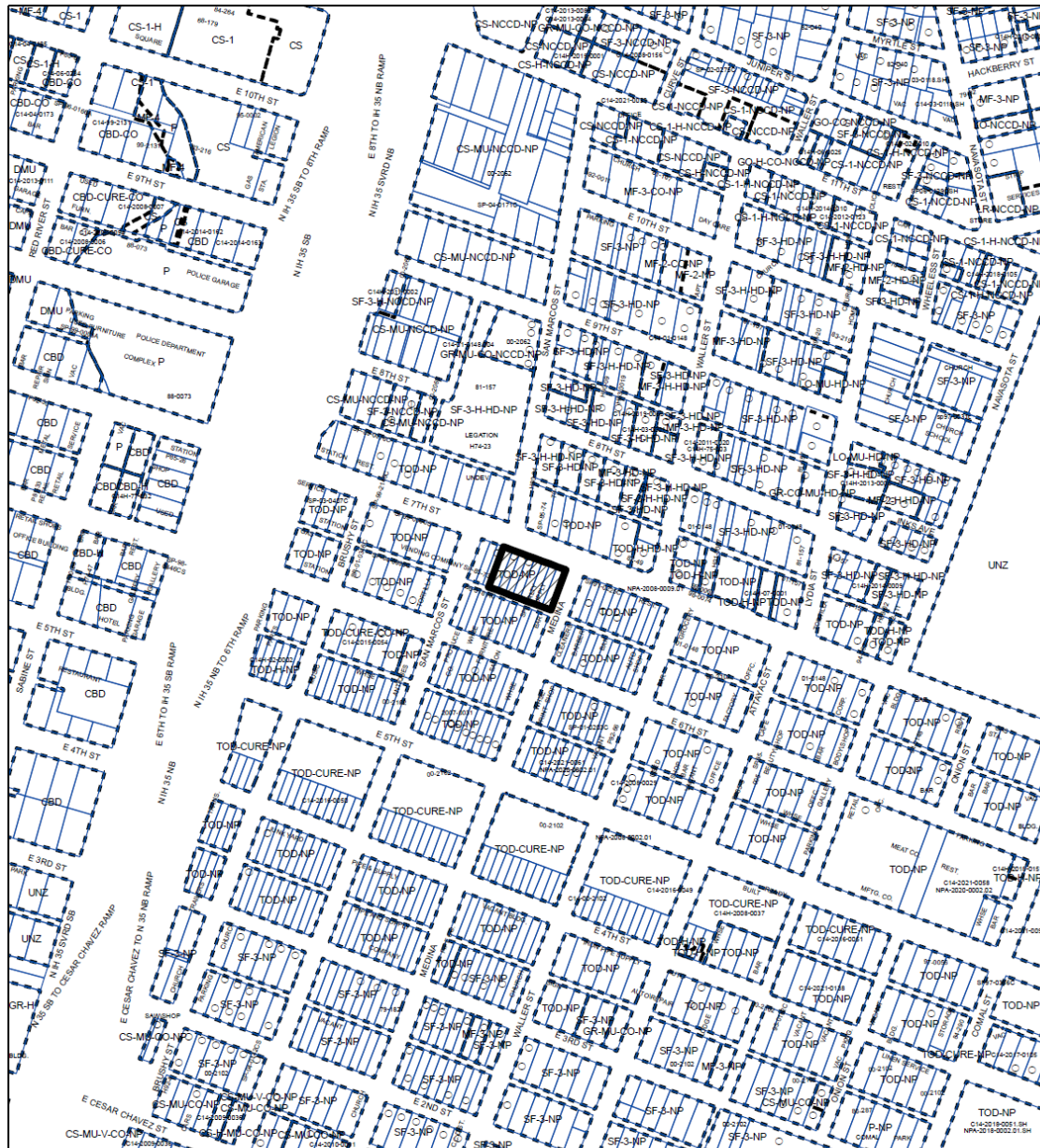
This product has been produced by the Housing and Planning Department for the sole purpose of geographic reference. No warranty is made by the City of Austin regarding specific accuracy or completeness.






City of Austin
Housing and Planning Department
Created on 8/22/2022, by: MeeksS

Future Land Use

	Subject Tract		Multi-Family
	500 ft. notif. boundary		Recreation & Open Space
	Civic		Single-Family
	Commercial		Specific Regulating District
	Mixed Use		Transportation



 SUBJECT TRACT
 PENDING CASE
 ZONING BOUNDARY

ZONING
ZONING CASE#: C14-2022-0149

This product is for informational purposes and may not have been prepared for or be suitable for legal, engineering, or surveying purposes. It does not represent an on-the-ground survey and represents only the approximate relative location of property boundaries.

This product has been produced by the Housing and Planning Department for the sole purpose of geographic reference. No warranty is made by the City of Austin regarding specific accuracy or



Created: 10/19/2022

The City of Austin is committed to compliance with the Americans with Disabilities Act and will provide reasonable modifications and equal access to communications upon request.