

Downtown Austin Commission

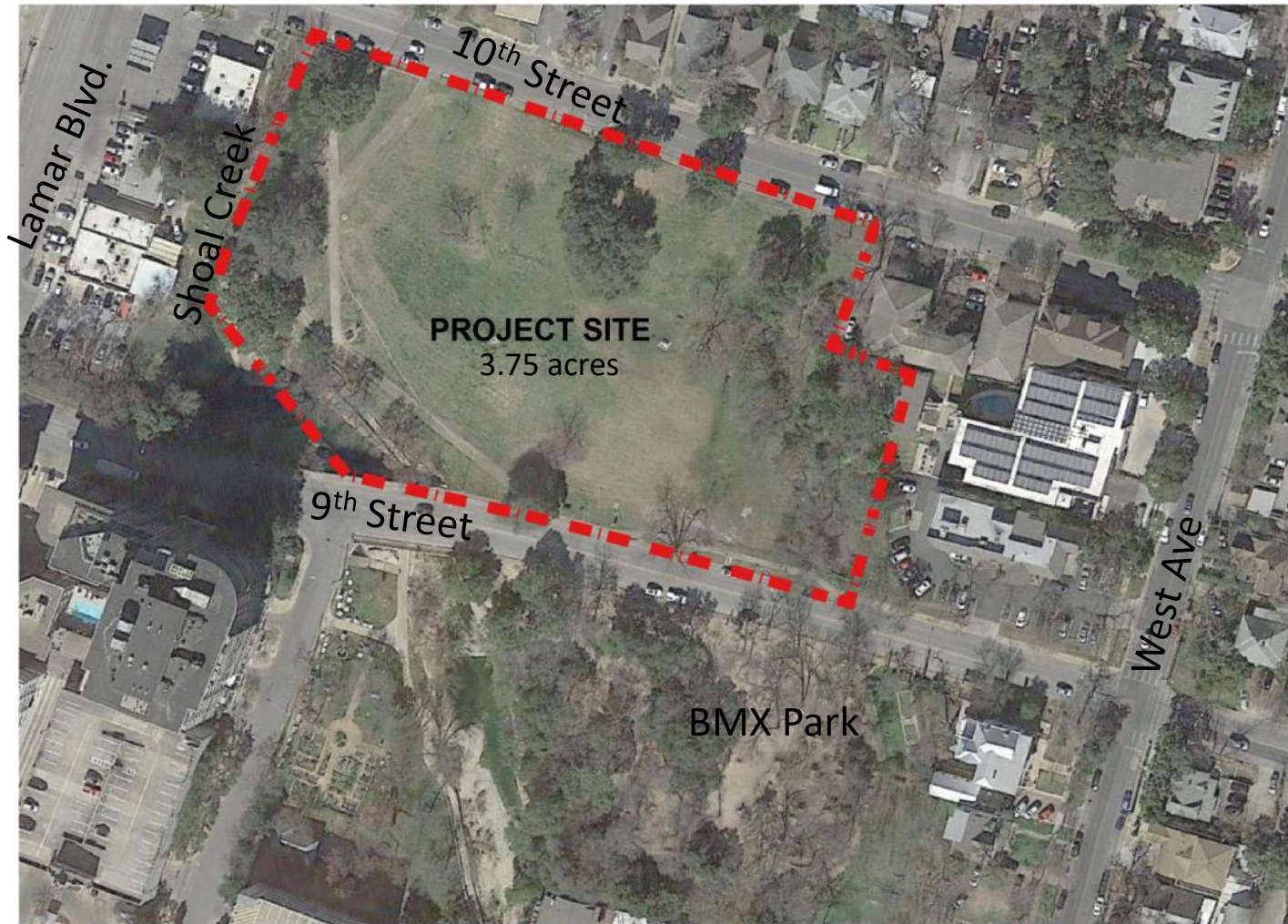
Duncan Neighborhood Park Concept Plan Implementation

March 15, 2023



Site Development Division
Reynaldo Hernandez

Project Context:



Project Partners:

- Landscape Architecture: Parks and Recreation Department, City of Austin
- Riparian Zone Mitigation: Watershed Protection Department, City of Austin
- Civil Engineer: Dunaway
- Structural Engineer: Encotech Engineering Consultants

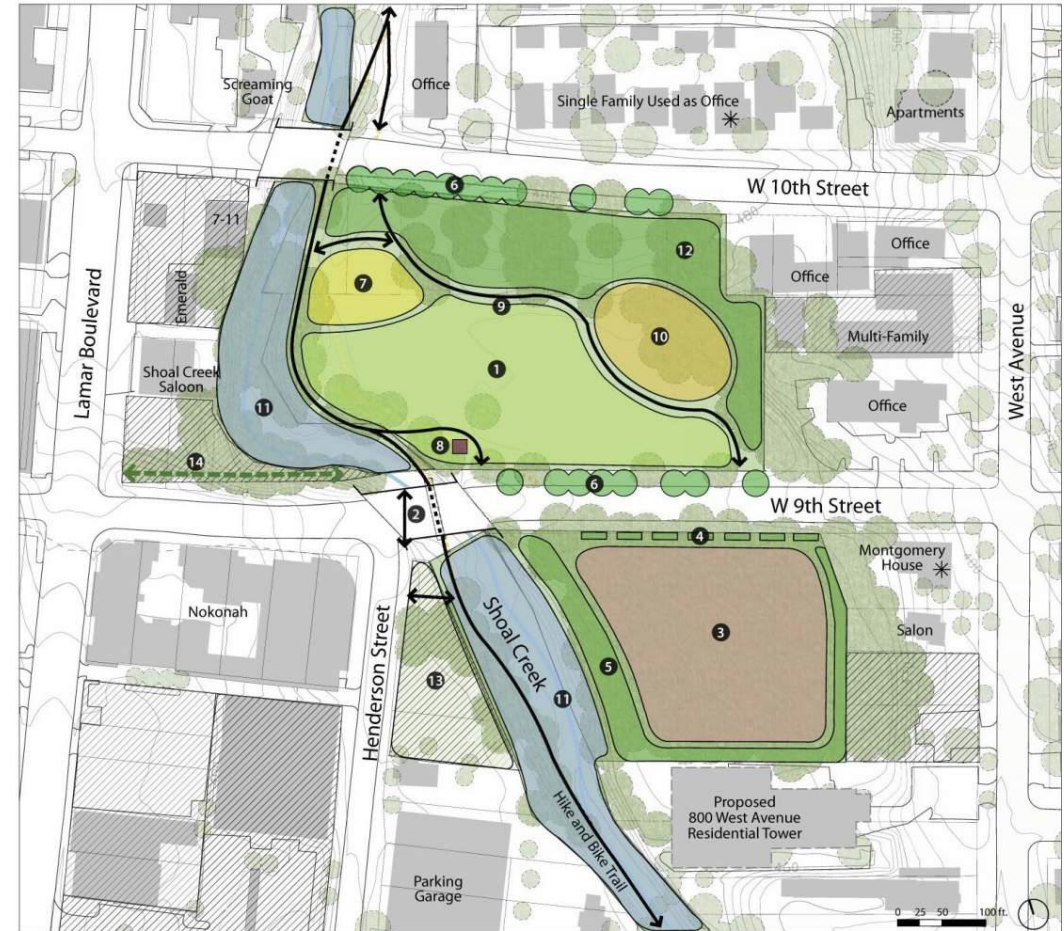
Downtown Parks and Open Space Plan Context:

Key Goals (north section):
Improve tree health and vegetation throughout, reinforcing the natural creek-side environment.

Create new attractions to the park to intensify its daily use by nearby residents and employees

KEY GOALS

- Improve tree health and vegetation throughout, reinforcing the natural creekside environment.
- Create new attractions to the park to intensify its daily use by nearby residents and employees.
- Contain the BMX park activity so it does not impede use of public ROW.



RECOMMENDATIONS

- 1 Preserve open lawn and introduce an irrigation system.
- 2 Introduce crosswalk on Ninth Street.
- 3 Maintain and enhance BMX park.
- 4 Install a low wall or vegetated buffer along sidewalk.
- 5 Create a vegetated buffer along Shoal Creek and adjacent properties in BMX park.
- 6 Implement Great Streets sidewalks and street trees.
- 7 Install children's play area.
- 8 Construct restroom building.
- 9 Improve and create accessible paths connecting activities.
- 10 Integrate off-leash area adjacent to slope.
- 11 Maintain riparian vegetation, implement slope stabilization and provide benches/picnic tables along the riparian edge.
- 12 Maintain woodland and vegetated slope.
- 13 Consider land acquisition for additional parkland.
- 14 Improve pedestrian connection between park and Lamar Blvd.

Public Engagement

- It's My Park Day Survey – March 2016
- Visioning Workshop – November 2016
- Concept Plan Workshop – April 2017
- Concept Survey – August 2020

The most frequent requests for Duncan Neighborhood Park include:

- preserve and enhance the native vegetation
- create more shade
- add a restroom
- improve paths
- create greater access to the creek
- maintain the lawn area
- improve drainage
- add a place for organized play
- more picnic tables

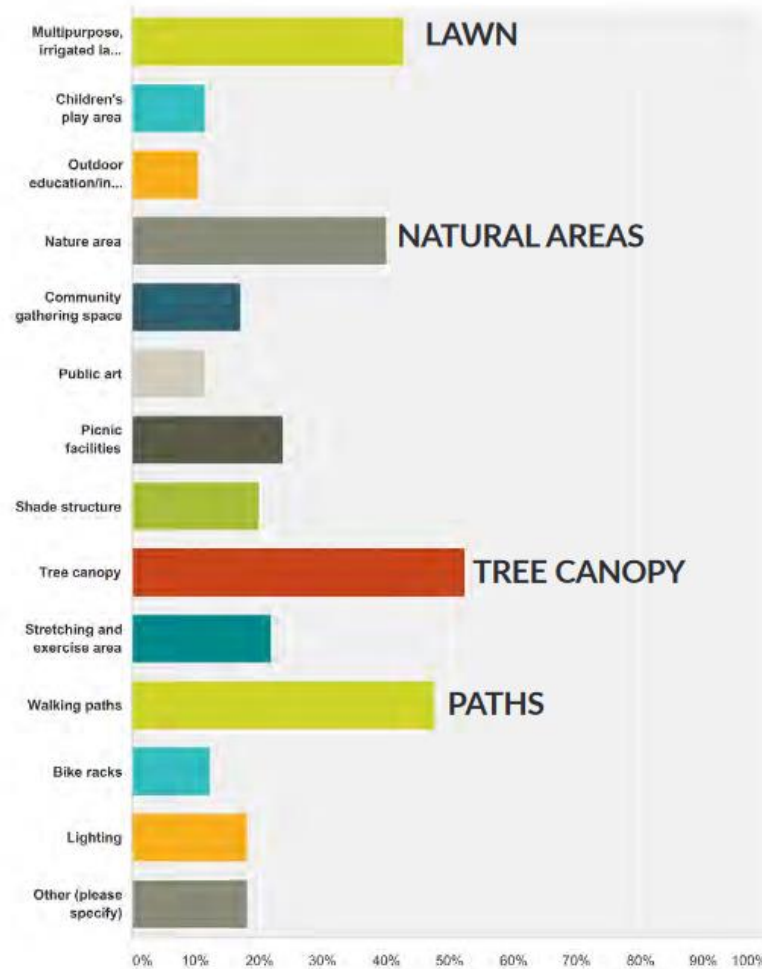


Public Engagement cont.:

2016 Public Engagement Survey Results Questions 2 and 3

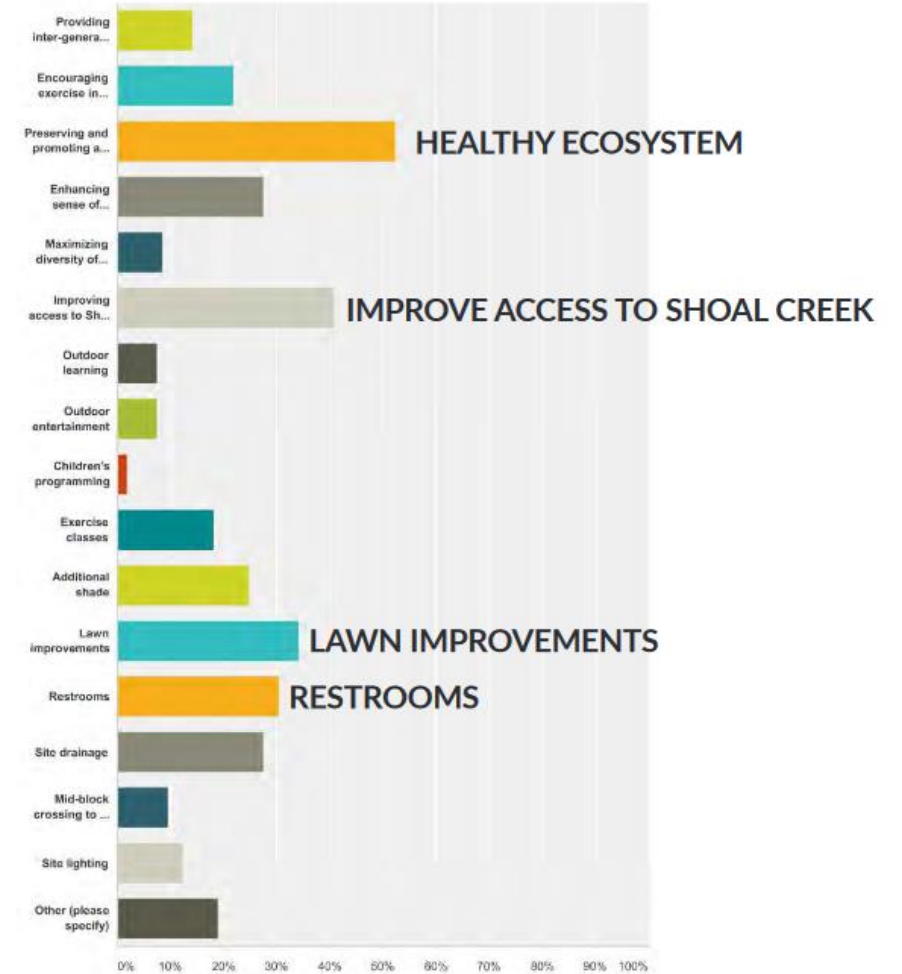
Q2 Which of the following site features are most important to you?

Answered: 105 Skipped: 0



Q3 Which of the following qualities or improvements would you like to see accommodated at Duncan Park?

Answered: 185 Skipped: 6



Project Constraints:



A: 100-Year Floodplain

↑ North
Not to scale



B: Heritage and Protected Trees

↑ North
Not to scale

Project Constraints cont.:

C: 420 CY of fill at BMX park
portion of Duncan Park (south
section)

- Proposed improvements will align park conditions with code and flood requirements per Watershed Protection Department recommendations



Concept Plan

Main Features for Phase 1:

- Addresses 420 Cubic Ft. overage
- Creates sustainable wetland feature
- ADA compliant park walkway
- Open multi-purpose lawn space
- Shaded park spaces
- ADA compliant benches and picnic tables
- ADA compliant drinking fountain
- Enhanced entries at 10th and 9th streets
- Shoal Creek Trail connection



Adjacent Park Amenities

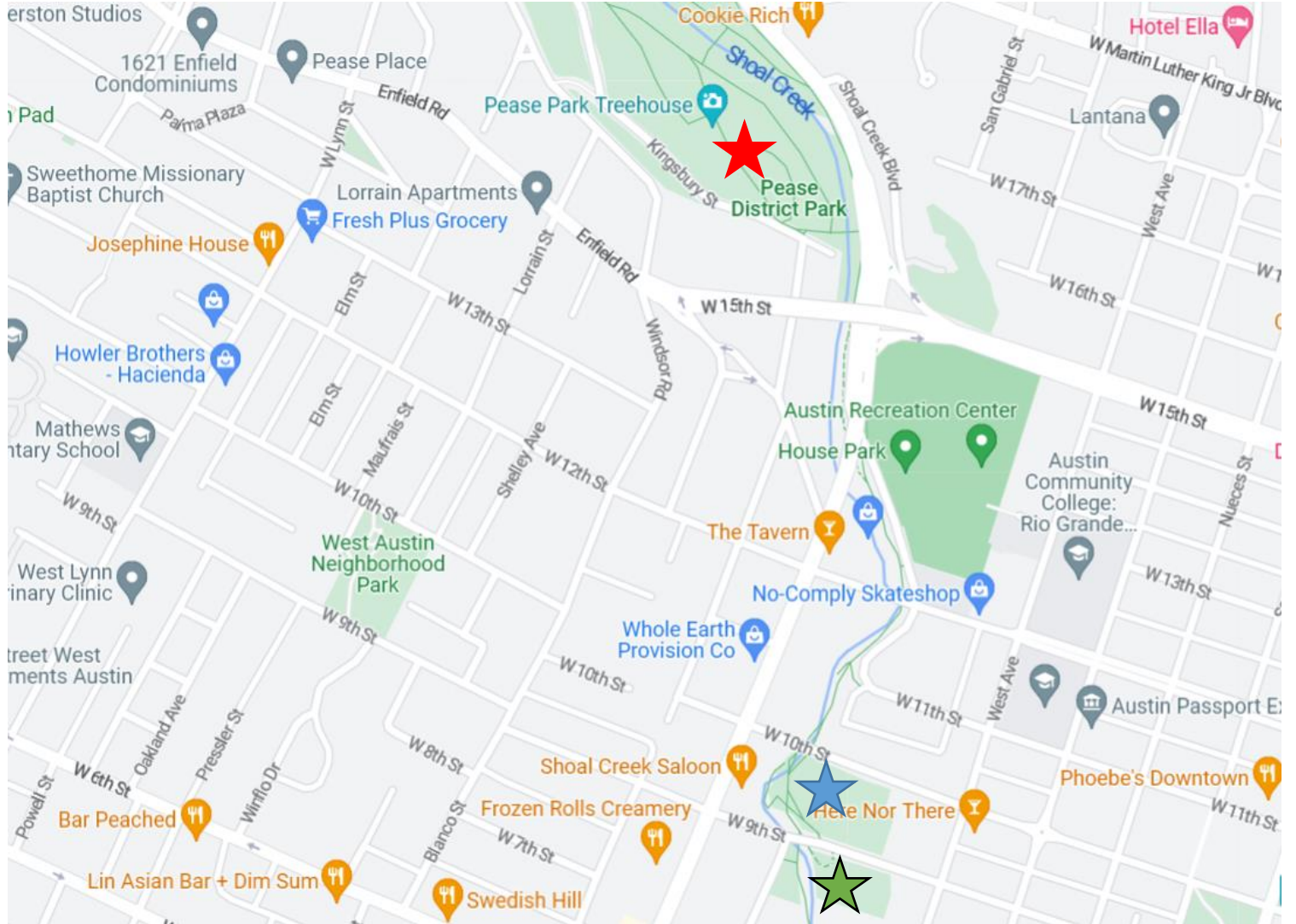
-  Duncan Neighborhood Park (North)

-  BMX site

- ★ Kingsbury Commons
at Pease District Park
0.7 miles 15-20 min walk
along Shoal Creek

Available amenities:

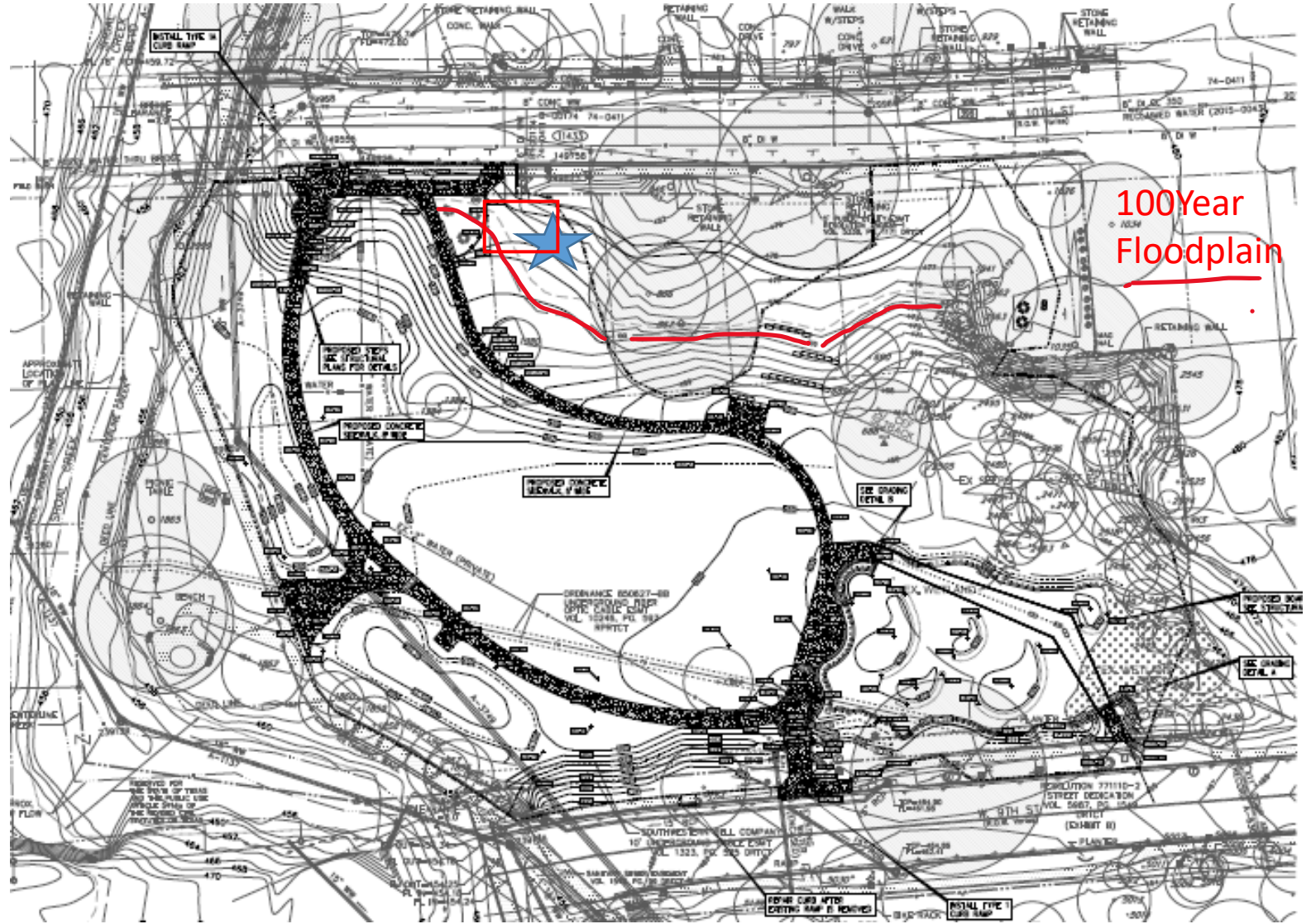
- Designated parking
- Nature playscape area
- Swings
- Totter trail
- Sport courts
- Interactive water feature
- Treehouse
- Restrooms



Possible Phase 2 Amenities

- ★ Available area for playscape or nature-based play elements

- Challenges: critical root zone of existing trees, 150' buffer from existing seeps, slopes, proximity to W. 10th Street.



Current Site Plan

Possible Phase 2 Amenities

Nature-based play area or Playscape:

- public engagement process to include outreach meetings and survey to gather input and feedback to determine location of amenity and play elements



Nature-based play area at Walnut Creek Metro Park

Example of playscape for ages 5 to 12 – Alderbrook Park



Council Request:

- **February 23, 2023** – Council Postponement Item 19

Pending review by the Parks Board and the Downtown Commission, the City Manager is directed to explore opportunities to include child-friendly features such as a playscape in this downtown neighborhood park plan.

Parks and Recreation Board Motion:

- **February 27, 2023** – Approved on an 8-0 vote with two vacancies and one absence
To recommend Austin City Council authorizes execution of a construction contract for Duncan Neighborhood Park project, with Muniz Concrete & Contracting, Inc. in the amount of \$1,240,579 plus \$148,000 contingency for a total contract amount not to exceed \$1,388,576, and further recommends additional community engagement to explore the inclusion of child-friendly features such as a play scape during a second phase of improvements at the park.

Funding :

Phase 1:

- 2012 Prop. 14
- 2018 Prop. C

Budget allocation

Construction: \$1,240,576

Anticipated Construction Schedule:

- 180 calendar day construction contract
- Construction start Summer 2023

Possible Phase 2:

- Parks Bond Program (future)
- Parkland Dedication Fees (future)

Anticipated Budget allocation

(currently unfunded):

Design and Construction: \$250,000 (+)

Next Steps:

Possible Phase 2:

- Conduct public engagement meetings
 - Receive input and provide feedback on opportunities for playscape and nature-based play amenities
- Develop design and construction drawings based on community input
- Permitting
- Solicitation
- Construction



Downtown Commission Request:

- Respectfully request a recommendation to Austin City Council to authorize the execution of a construction contract for Duncan Neighborhood Park project, with the low bid contractor in the amount of \$1,240,579 plus \$148,000 contingency for a total contract amount not to exceed \$1,388,576, and a further recommendation for additional community engagement to explore the inclusion of child-friendly features such as a playscape during a second phase of improvements at the park.



Questions

Thank You