

2514 Pearl St.
Austin, TX 78705

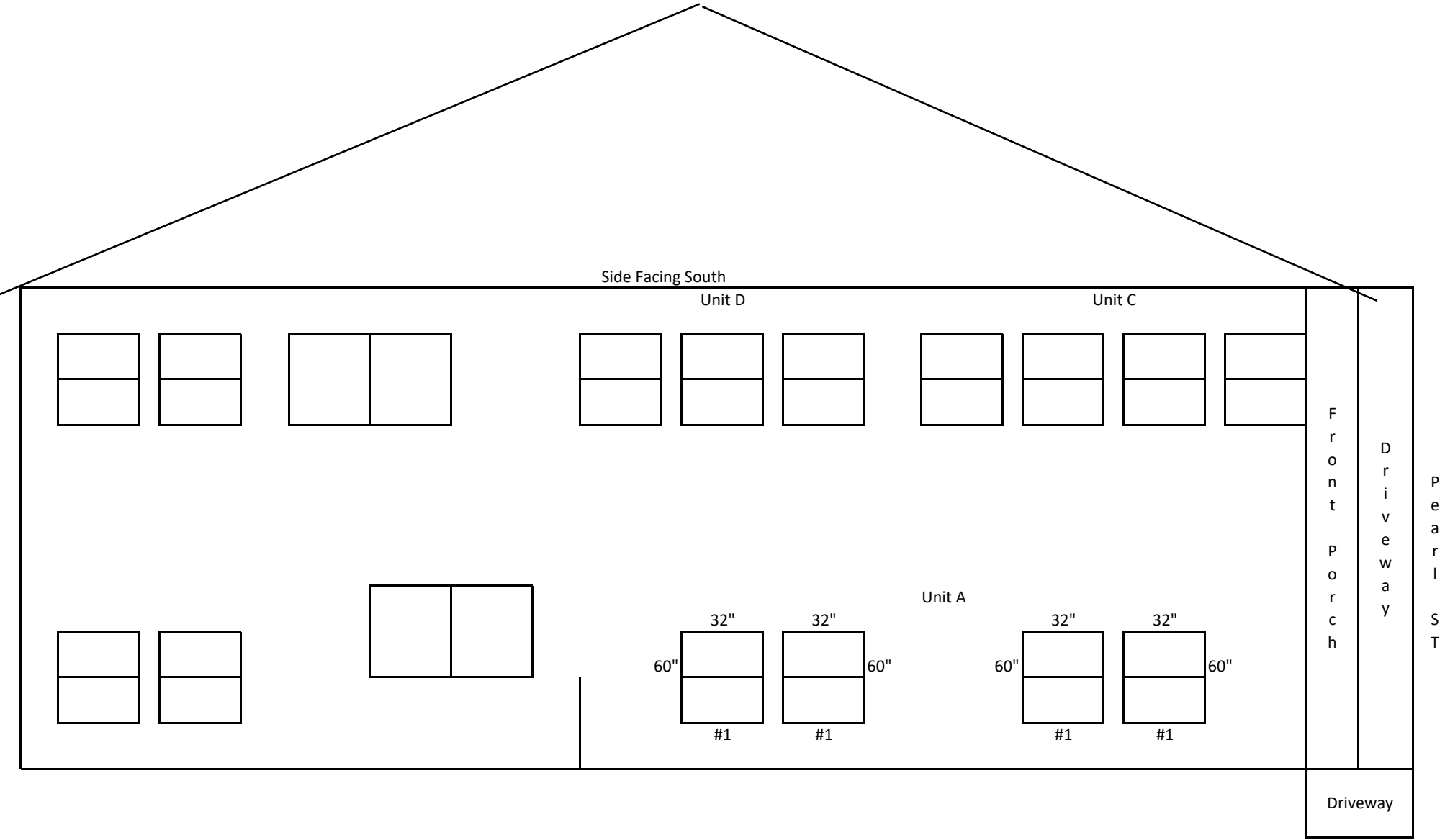
Replace 9 windows with White, Vinyl, Insulated Glass, Low-E Glass.

#1 - 32"w x 60"l vinyl windows. Unit A

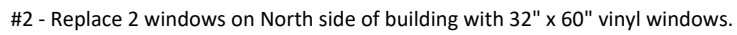
#2 - 32"w x 60"l vinyl windows. Unit D

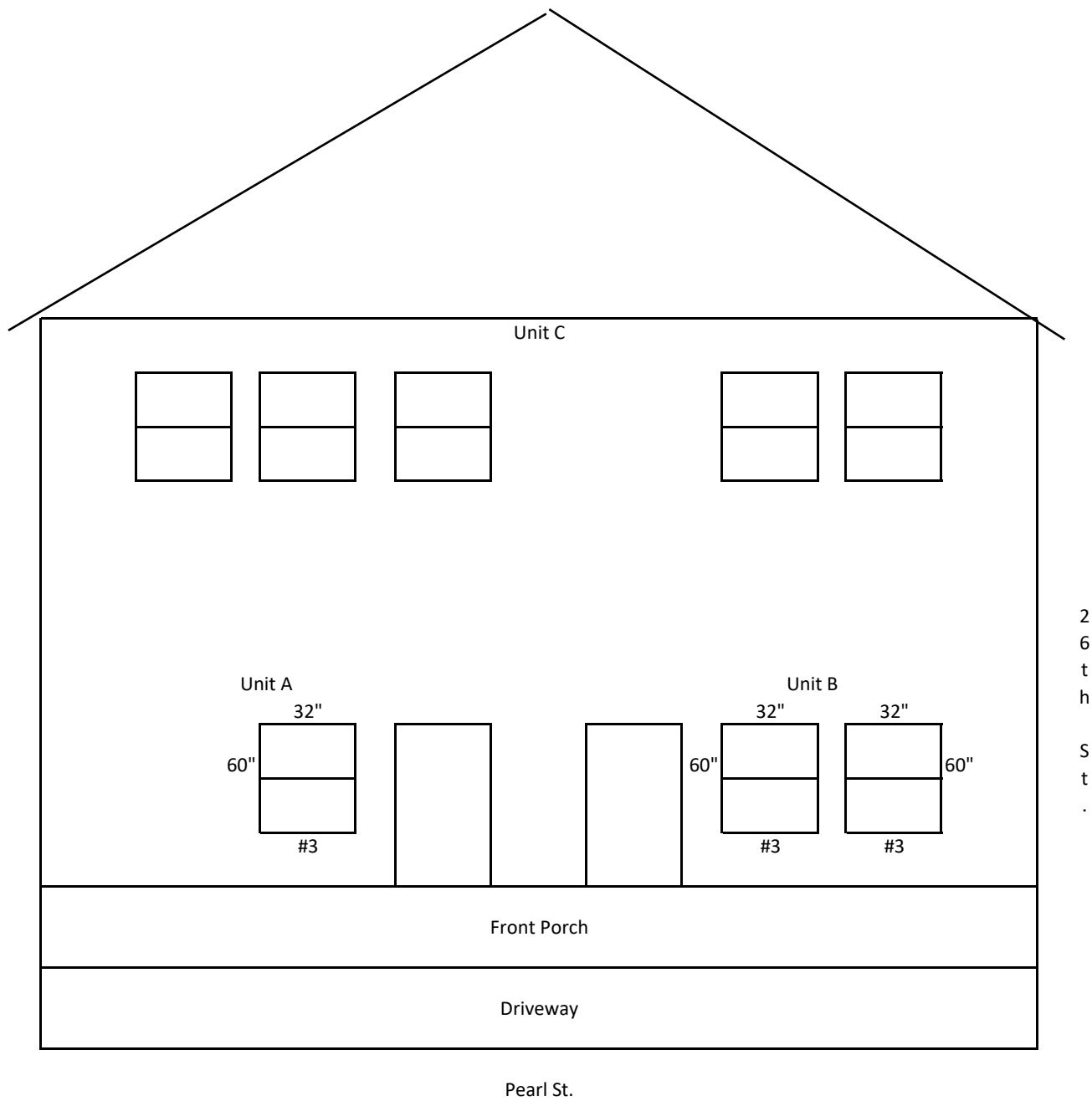
#3 - 32"w x 60"l vinyl windows. Unit A

Siding is stucco with wood trim.

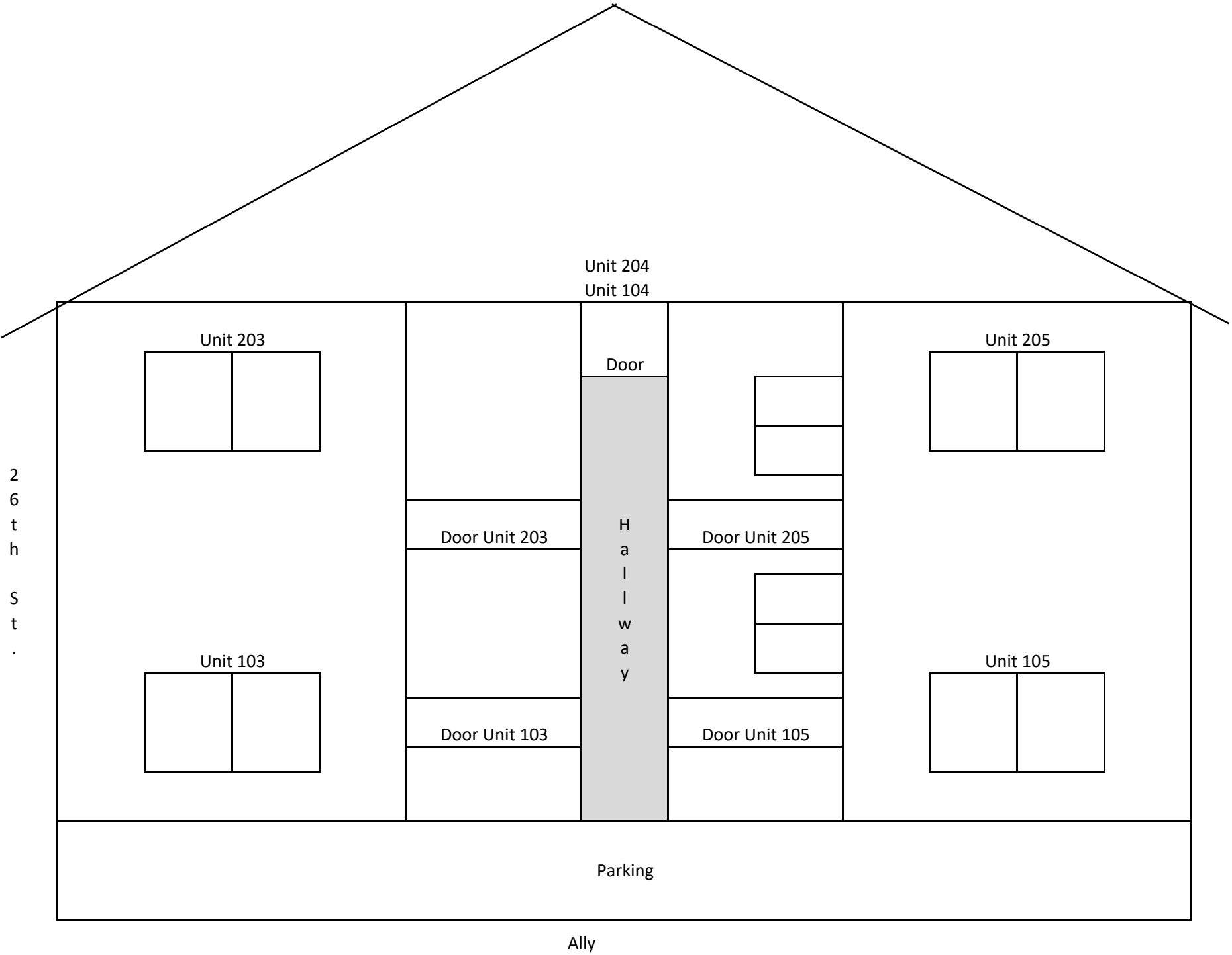


#1 - Replace 4 windows on South side of building with 32" x 60" vinyl windows.





#3 - Replace 3 windows on East side of building with 32" x 60" vinyl windows.



2
6
t
h
S
t
.

Ally



NEW CONSTRUCTION

NAIL FIN INSTALLATION



! IMPORTANT! READ ALL INSTRUCTIONS BEFORE BEGINNING INSTALLATION.

Follow your local building codes, customs and building practices for additional installation requirements. The manufacturer will accept no responsibility for air or water leakage above, under, or around the window unit. These instructions are general in nature; for detailed installation instructions by product, contact **Ply Gem Windows at 1-888-9PLYGEM.**

- (Required)** The Rough Opening should be level, plumb, and square, and should be sized according to **Figure 1**.
- (Recommended)** If a weather resistant barrier is used, follow the barrier manufacturer's recommendations for treatment of window openings.
- (Recommended)** If pan flashing is used, it should be installed at this time. Follow the pan flashing manufacturer's recommendations (or ASTM 2112 standards), making sure that the product provides an adequate sill dam height to the interior.
- (Required)** Apply a generous (at least 3/8" bead), continuous bead of exterior-grade sealant to ensure an adequate seal between the back of the nailing fin and the exterior surface of the rough opening (reference **Figure 3**). The bead should run along the approximate location of the nailfin holes (if the nailing fin has two rows of holes, apply sealant in line with the inner row). **! If using pan flashing, do not seal the lower sill nailing fin so as to provide adequate drainage.**
- (Required)** With the window closed and locked, place it in the rough opening and center it from side to side. If the sill of the rough opening is not level and true, place shims as needed to prevent the sill from bowing or sagging (**Figure 2**), otherwise place the window unit directly onto the sill. If your window is a horizontal sliding window, make sure each meeting rail is supported.
- (Required)** With a single approved fastener (see **Chart A**), fasten the window through the nailfin through one hole nearest the top center.
- (Required)** Square window side to side (shimming if necessary—see **Figure 2**) to maintain square and plumb jambs. Make sure the window sill and head are level and not crowned.



Figure 1

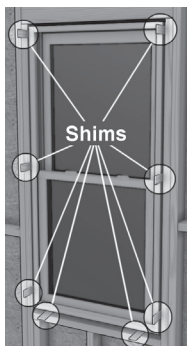


Figure 2

CHART A – Fastener Schedule for New Construction Vinyl

Nailfin Holes to Use for Fasteners	Standard: Every Other Hole Impact: Every Hole
Distance From Window Corners	4" or nearest hole
Bldg Framing Penetration	1" min. (local code may dictate)
Min. Corrosion-Resistant Nail Size	3/8" Minimum Head diameter
Min. Corrosion-Resistant Screw Size	#8 or Larger Pan Head

NOTE: Muller units may have additional instructions attached to the unit.

A properly installed window will measure the same within 1/16" across the top, middle and bottom, and within 1/8" across the diagonals (this may vary for integral and side-by-side mull units).

! NOTE: Over-shimming can cause bowing and prevent proper window operation.

- (Required)** After checking the operation of the window, complete the fastening by placing fasteners in the provided nailing fin holes, spaced according to **Chart A**.

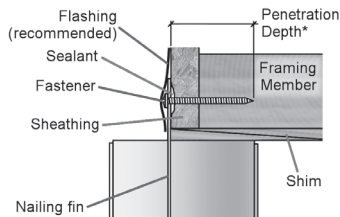


Figure 3 – General Installation

! CAUTION Consult local building codes to verify that sheathing is considered a framing member.

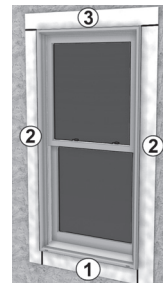


Figure 4

- (Recommended)** Following the flashing manufacturers' recommendations, apply flashing to the nail fins and surrounding wall surface starting with the bottom, then the sides, and finally the top, creating a shingle effect (reference **Figure 4**). **! NOTE: Where pan flashing is present, do not use flashing that will impede proper drainage of the pan on the bottom.**

PRECAUTIONARY NOTES

- For trim and siding, allow 1/8"-1/4" gap all the way around the window frame to allow for expansion. If exterior is brick or masonry, leave a 3/8" gap between the bottom sill of the window and the masonry to avoid "brick binding".
- Exterior wall systems like stucco and EIFS must be designed to manage moisture around the window opening.
- Follow the siding manufacturer's requirements for sealing between the siding and window frames.
- Any low-expansion foam used should conform to AAMA 812-04 (see manufacturer's requirements), but any binding or damage of any type caused by the insulation will not be covered under warranty.
- Do not paint any vinyl part of this window for any reason. Painting vinyl will render null and void all warranties.
- Do not block or seal weep holes.



Acid solutions used to clean masonry can damage window and door items such as; cladding, hardware, glass, sealants, and fasteners. The cleaning solution manufacturer's recommendations must be followed carefully; you must protect Ply Gem window units from contact with solution. If solution does come in contact with unit, immediately rinse all surfaces with clean water.



170006000 REV. C

Specifications

Dimensions

Grid Width (In.)	None	Jamb Depth (In.)	2.75
Product Depth (In.)	2.75 in	Product Height (In.)	59.5 in
Product Width (In.)	31.5 in	Rough Opening Height (In.)	60 in
Rough Opening Width (In.)	32 in	Width (In.) x Height (In.)	31.5 x 59.5

Details

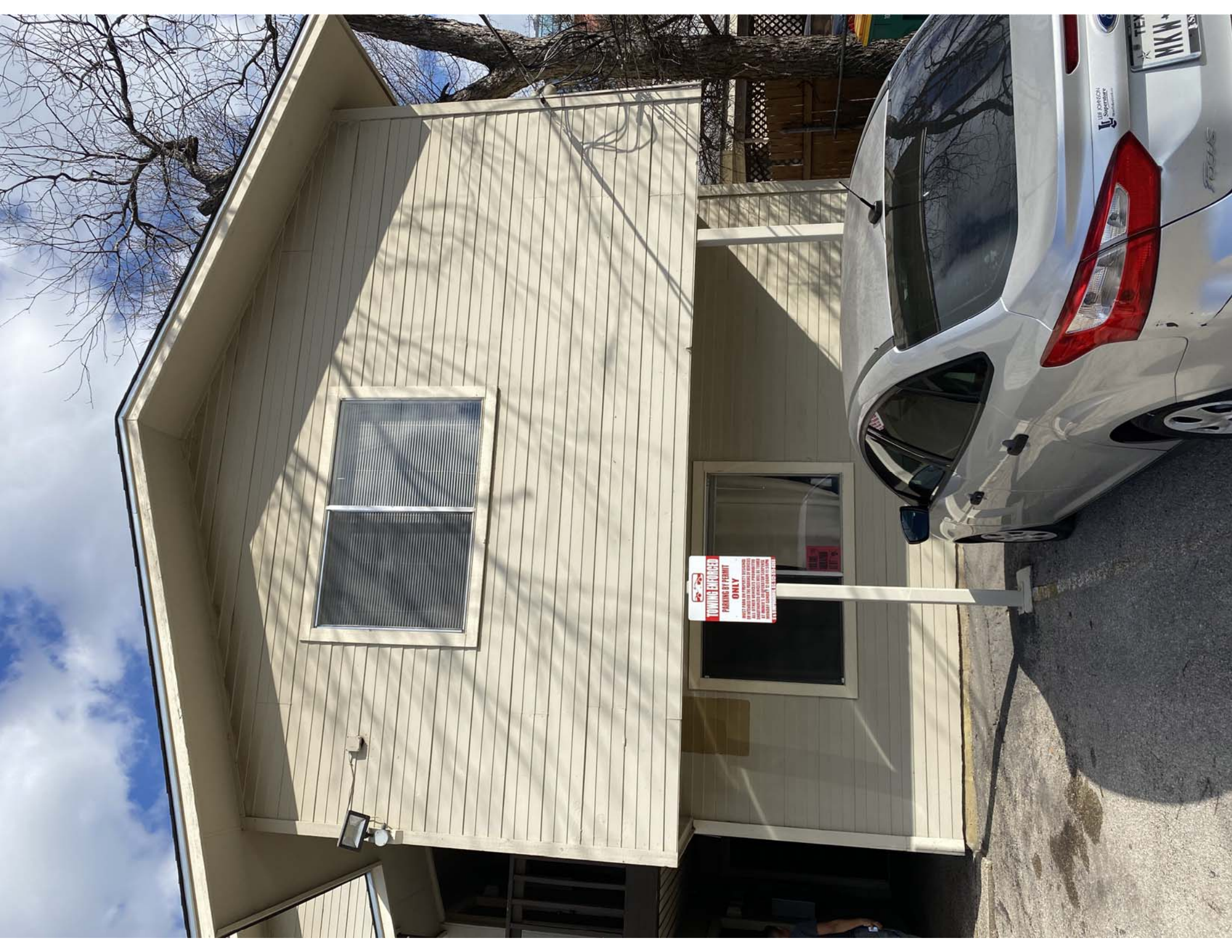
Exterior Color/ Finish	White	Exterior Color/Finish Family	White
Features	Argon Gas Filled,Double Tilt Release,Insect Screen,Integrated Nail Fin,Tilt-In Cleaning	Frame Material	Vinyl
Frame Type	Nail Fin	Glass Type	Insulated Glass,Low-E Glass
Glazing Type	Double-Pane	Grid Pattern	No Grid
Grille Type	Grille Between Glass	Hardware Color/Finish Family	White
Included	Hardware,Screen	Interior Color/Finish Family	White
Lock Type	Cam Action	Number of Grids	No Grid
Number of Locks	2	Product Weight (lb.)	36 lb
Solar Heat Gain Coefficient	.22	U-Factor	.30
Window Type	Other	Window Use Type	New Construction,Replacement












**TOWING ENFORCED
ONLY**
PRIVATE PROPERTY - NO PARKING TO BE TOLDED
IF YOU ARE NOT A RESIDENT OF THE CITY OF DALLAS
OR A BUSINESS OR INDUSTRY OPERATING IN THE CITY
OF DALLAS. IF YOU ARE A RESIDENT OF THE CITY
OF DALLAS, YOU MAY PARK HERE FOR UP TO 30 DAYS.

LEE JOHNSON
Superior
Ford

TEX
MKW 4135







2614

NO PARKING
FIRE HYDRANT
ZONE

PAVING
100-4510

