

HISTORIC LANDMARK COMMISSION
DEMOLITION AND RELOCATION PERMITS
APRIL 5, 2023
PR-2023-014371; GF-2023-027652
2200 SAN ANTONIO STREET

PROPOSAL

Demolish a ca. 1961 ecclesiastical education building.

ARCHITECTURE

2200 San Antonio Street is a two-story brick building designed by Fehr and Granger. Originally an addition to a ca. 1890s residential building, it retains most of its exterior brick and vertical glazed brick accent headers, except for where it once connected to the now-demolished house. Fenestration includes horizontal sliding aluminum windows and double doors beneath a metal awning. A privacy wall, which once had solar-tile accents characteristic of mid-century Modern buildings, shields the building at the San Antonio Street façade.

RESEARCH

The building at 2200 San Antonio Street, also addressed as 502 W. 22nd Street, was constructed in 1961 for the Lutheran Student Foundation by B. J. Building Corporation. Designed by prominent Austin architects Fehr and Granger, who were known for their Modern designs and functional educational and ecclesiastical buildings, the boxy brick structure was attached to an existing 1890s house, used by the Foundation as the University of Texas Lutheran Student Center. During its first few years, the building served as an educational facility, an event space, a pick-up and drop-off point for picketers in favor of desegregation, and a space where students volunteered with various civic groups.

Despite the initial plan to replace the old building with a matching brick building within six years, the Foundation instead purchased a plot of land down the street at 2100 San Antonio and sold 2200. The old house was demolished during the early 1970s and not replaced; the empty lot was used for parking. The building was used by Ginny's Copies, Republic Life Insurance, and the University Tennis Foundation before it was purchased by the University Baptist Church, once again becoming an ecclesiastical education building before its sale to private owners.

PROPERTY EVALUATION

Council Resolution No. 20160623-082 directs the Historic Preservation Office to refer demolition applications for buildings fifty years or older and dedicated to civic uses, including but not limited to, ecclesiastical, educational, recreational, charitable, hospital, and other institutional or community uses, to the Historic Landmark Commission.

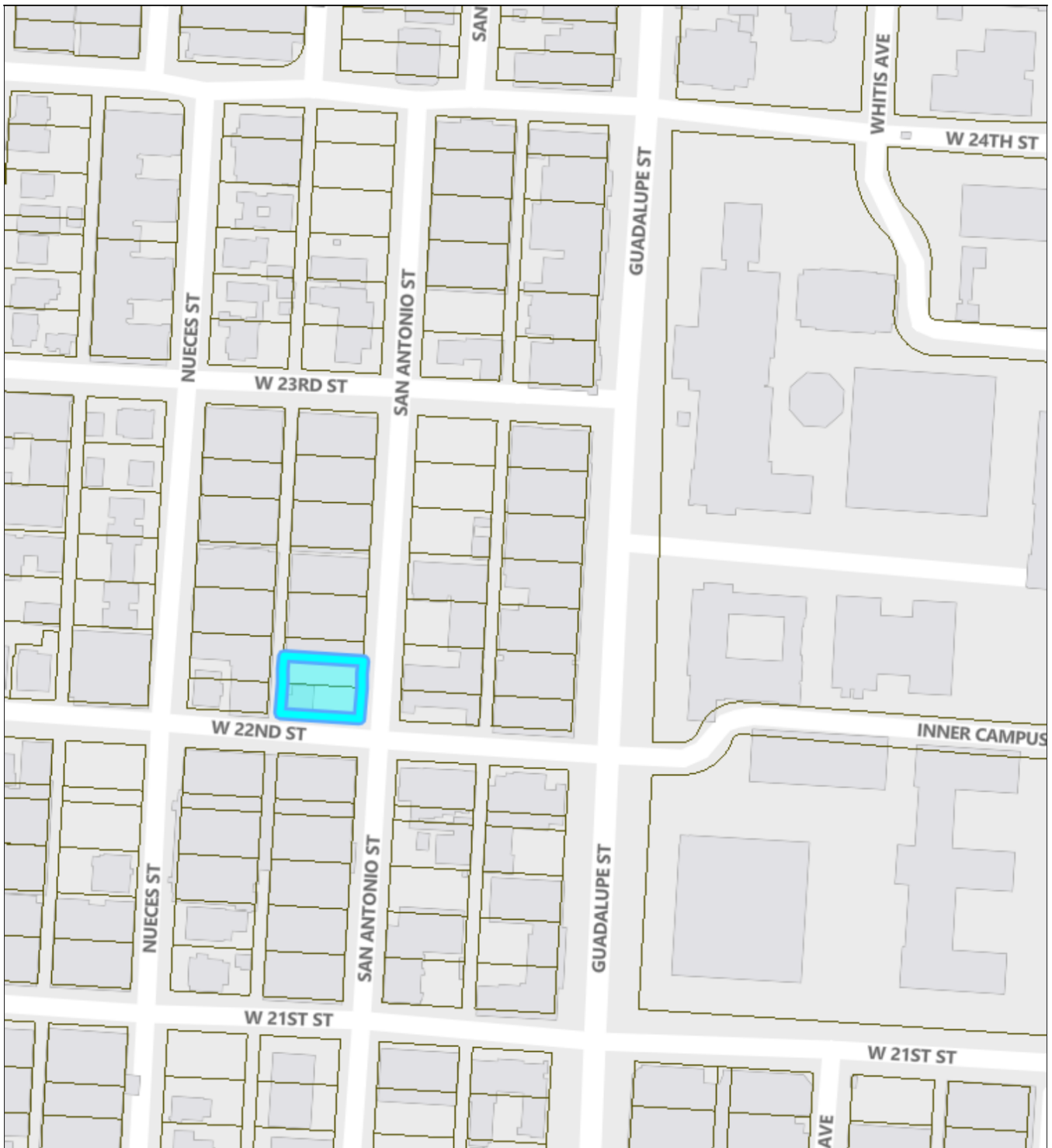
Designation Criteria—Historic Landmark

- 1) The building is more than 50 years old.
- 2) The building appears to retain moderate integrity as a standalone structure. Though it was constructed as an addition to a building that was demolished, it still retains its original form, fenestration pattern, and most of its materials (solar tiles have been removed from the privacy wall at San Antonio Street). However, it no longer conveys the design intent of the architects as a modern addition to a late-nineteenth-century residential-scale building.
- 3) Properties must meet two criteria for landmark designation (LDC §25-2-352). Staff has evaluated the property and determined that it may meet two criteria:
 - a. Architecture. The building is a small-scale example of the Modern style employed by Fehr and Granger.
 - b. Historical association. The property is associated with the University of Texas' Lutheran community.
 - c. Archaeology. The property was not evaluated for its potential to yield significant data concerning the human history or prehistory of the region.
 - d. Community value. The property was not evaluated for a unique location, physical characteristic, or significant feature that contributes to the character, image, or cultural identity of the city, the neighborhood, or a particular demographic group.
 - e. Landscape feature. The property does not appear to be a significant natural or designed landscape with artistic, aesthetic, cultural, or historical value to the city.

STAFF RECOMMENDATION

Release the demolition permit upon completion of a City of Austin Documentation Package. The loss of the building's relationship to the original house on the lot impacts its ability to convey its significance.

LOCATION MAP



1: 2400

Lot Lines

Lot Line



GF 23-027652

2200 SAN ANTONIO STREET



3/22/2023

This product is for informational purposes and may not have been prepared for or be suitable for legal, engineering, or surveying purposes. It does not represent an on-the-ground survey. This product has been produced by the City of Austin for the sole purpose of geographic reference. No warranty is made by the City of Austin regarding specific accuracy or completeness.

PROPERTY INFORMATION*Photos*

1958 aerial, US Department of Agriculture Soil Conservation Service



1965 aerial, US Department of Agriculture



1977 aerial photograph, International Aerial Mapping Company for the City of Austin



Douglass, Neal. Lutheran Student Center and Bible Chair, photograph, January 17, 1957; University of North Texas Libraries, The Portal to Texas History; crediting Austin History Center, Austin Public Library.





Demolition permit application, 2023



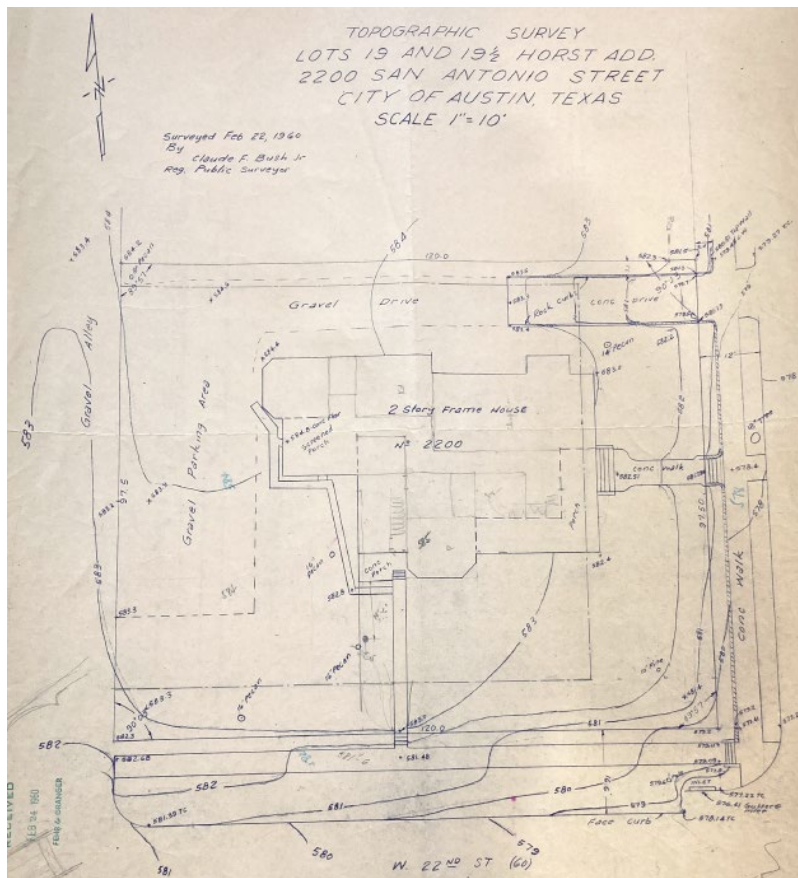
Google Street View, 2011. Solar tiles at San Antonio side have been removed.

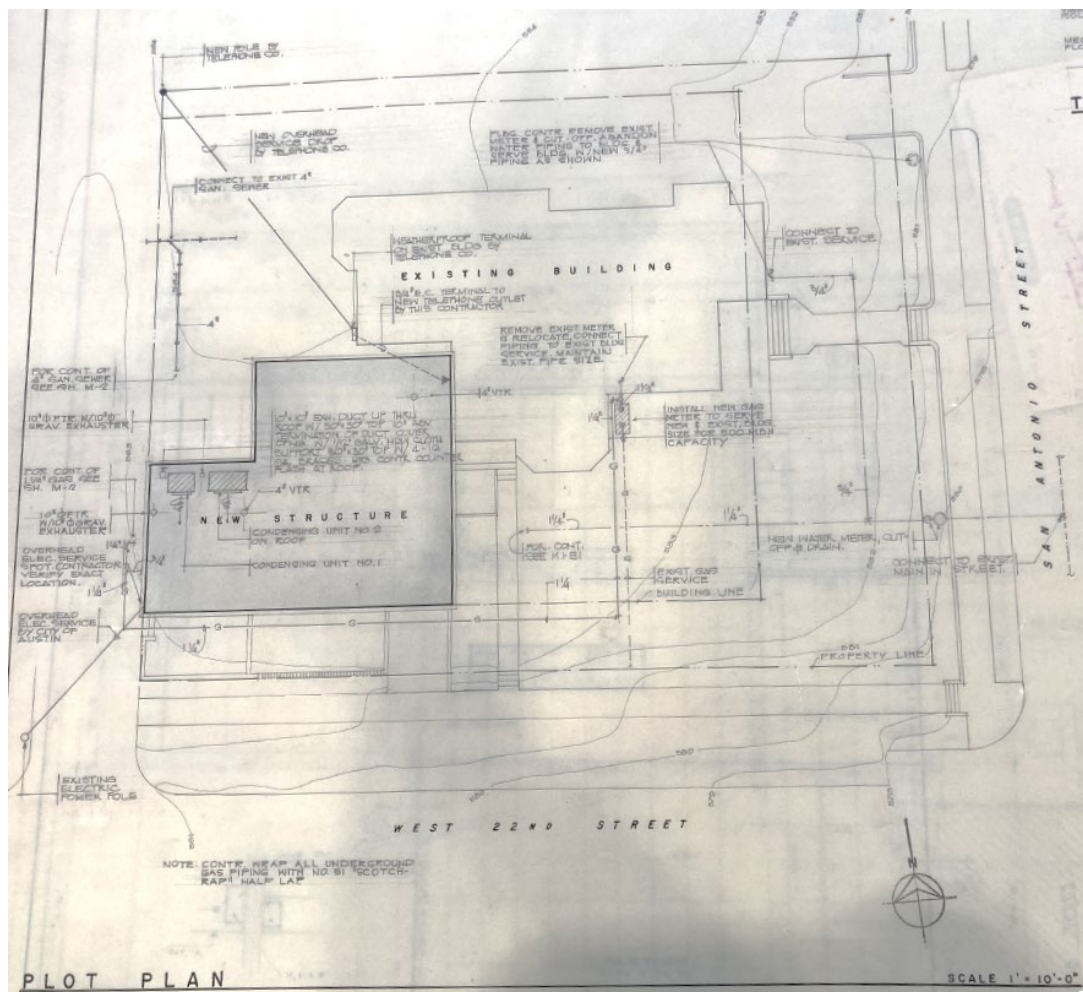
Occupancy History

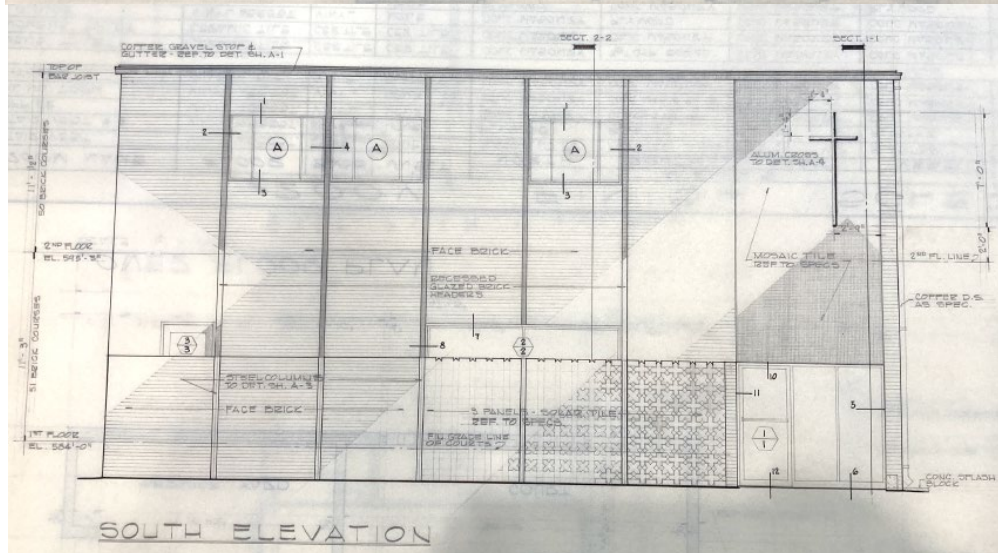
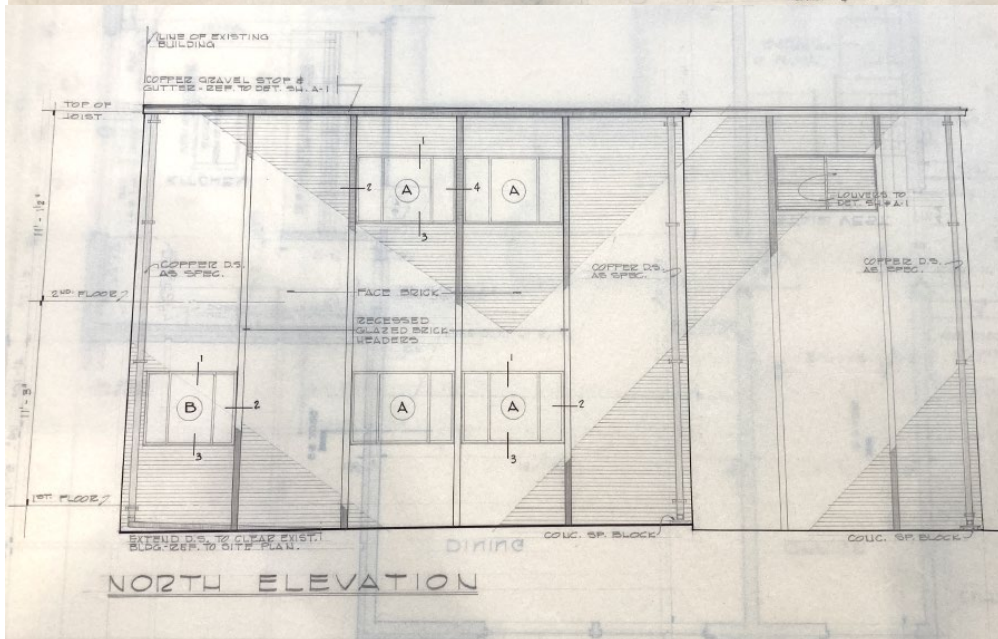
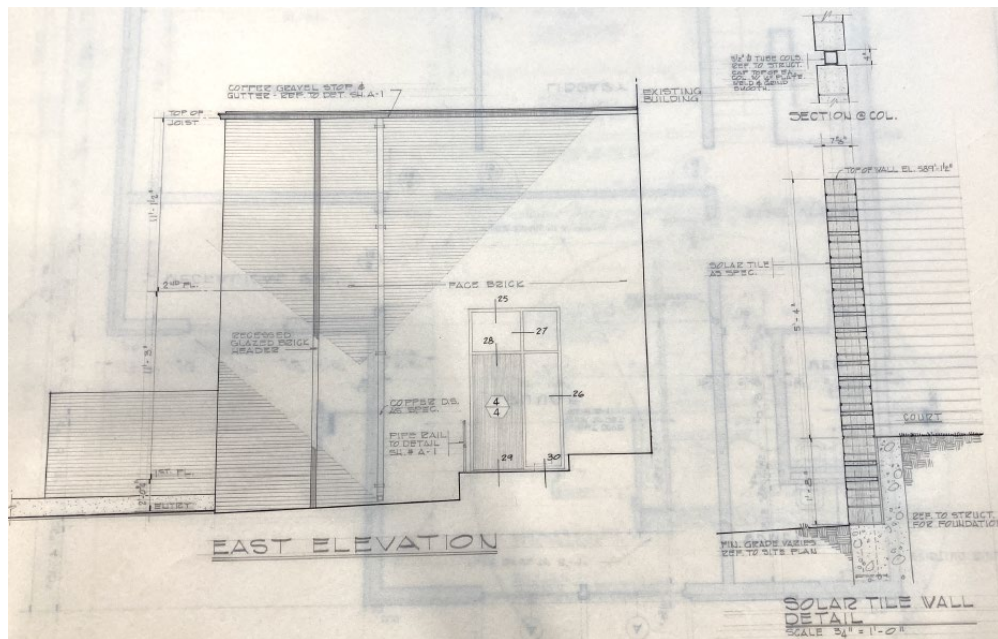
City Directory Research, February 2023

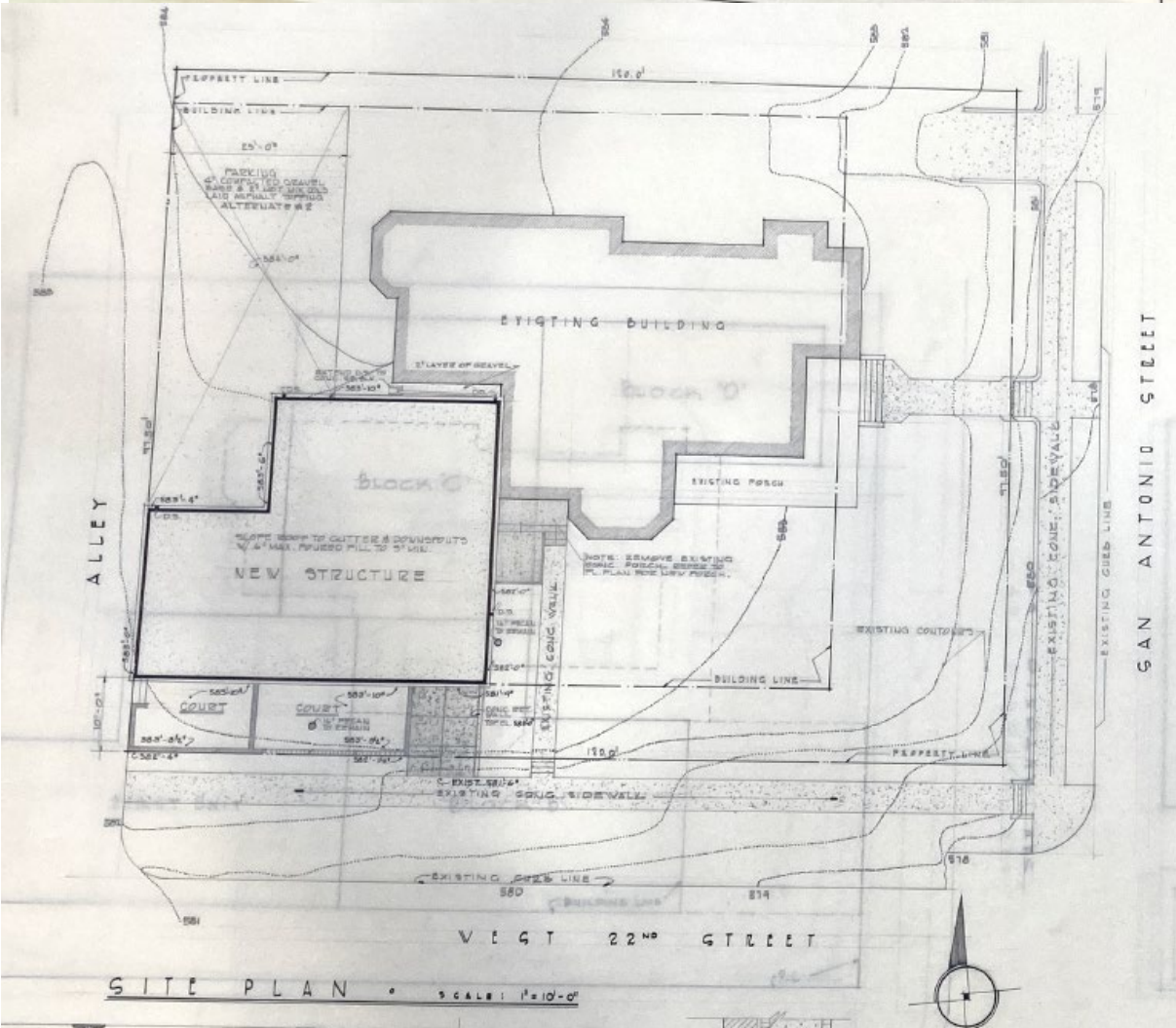
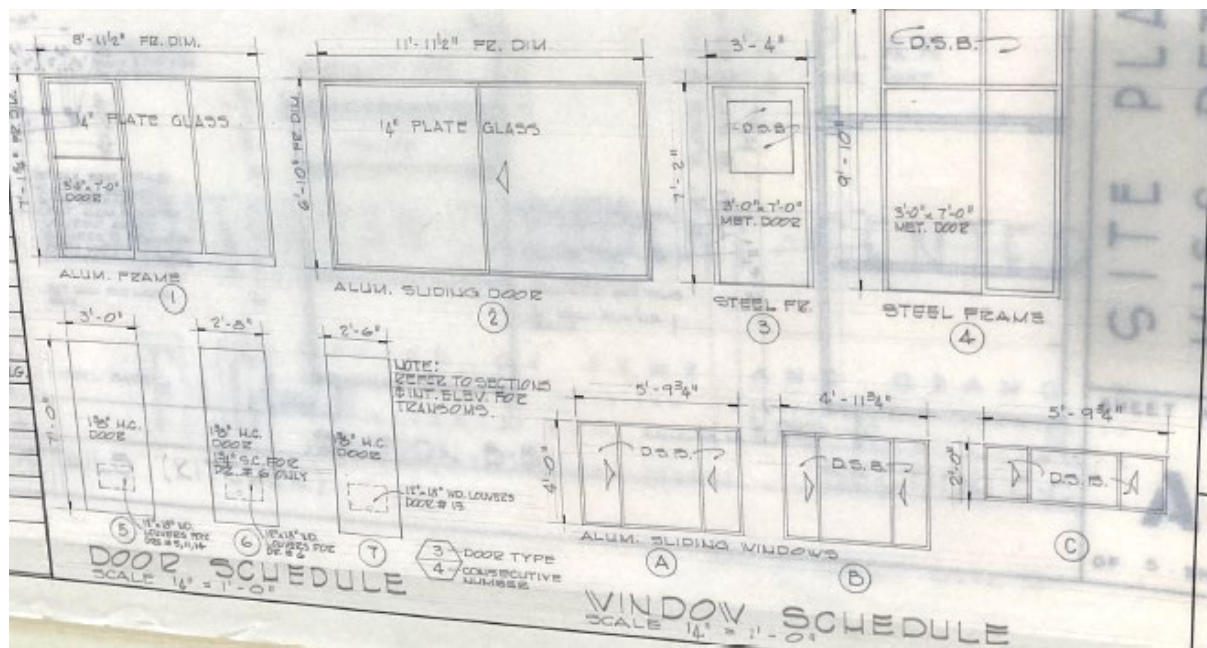
1972	Republic National Life Insurance Co.
1968	Lutheran Student Center
1965	Lutheran Student Center
1962	Lutheran Student Center

Historical Information









Austin History Center, Fehr & Granger Architectural Files, F9-727: Lutheran Student Center

Lutheran Board Meeting Slated At UT Tonight

A meeting of the board of directors of the Lutheran Student Foundation of the University of Texas will be held Friday at 7:30 p. m. The meeting will take place at the present location of the Lutheran Student Center, University of Texas, 2004 Whitis Avenue.

The Lutheran Student Foundation has completed negotiations to purchase a new location at 2200 San Antonio Street. The foundation will take possession on June 1, 1958, and plans to erect a new building and permanent center at this site in approximately five years. The foundation will use the existing building for the present time beginning with the school term of the summer of 1958.

The Bible Chair will be located there as well as the offices for the Lutheran Student Foundation, and facilities for the Lutheran Student Association. The study committee for the relocation was made up of Dr. C. C. Albers and Curt von Bieberstein Jr.

Officers of the board of directors, Lutheran Student Foundation are: the Rev. E. V. Long, president; Mrs. F. S. Gustafson, vice president; Lee Ellingson, treasurer; and the Rev. W. C. Ahlrich, secretary.

Student Center Contracts Let

B. J. Building Corporation has the general contract for construction of the \$52,000 first unit of the Lutheran Student Center to be built at 2200 San Antonio.

The electrical contract went to Dean Johnson; heating and air-conditioning to Young and Pratt; and the plumbing contract to P. G. Soxa and Sons.

Lutheran Board Meeting Slated At UT Tonight. The Austin Statesman (1921-1973); Austin, Tex. [Austin, Tex]. 06 Dec 1957: 2

Student Center Contracts Let. The Austin Statesman (1921-1973); Austin, Tex. [Austin, Tex]. 05 Nov 1960: 5.



Two Lutheran pastors and two leaders in the University of Texas Lutheran Student Association study plans for the new student center to be built at 22nd and San Antonio streets. The group includes, left to right, Rev. W. C. Ahlrich, Lutheran Student

American-statesman/UPI

Foundation board chairman; Rev. Harold D. Pennington, LSF executive director; Charles Manske, Lutheran Student Association president, and Miss Elaine Burke, LSA vice president.

Austin 'Home' Planned For Lutheran Students

Lutheran students attending the University of Texas will have a new "home away from home" by June 1.

Construction of the new two-story brick Lutheran Student Center will get underway at 22nd

and San Antonio streets in late November with completion scheduled in about six months.

Designed by Austin architects Fehr and Granger, the new \$53,000 building will be the first unit of a six-year building program.

"We plan to replace the old building now on the property, with an extension of this new unit in about six years," Rev. W. C. Ahlrich, student center pastor, explains. "Of course, we will use it in the meantime."

Dr. L. D. Haskew, University vice chancellor, will be guest speaker at the ground breaking ceremonies Nov. 20 at 4 p.m.

D. J. Building Corporation of Austin holds the general construction contract. Electrical contractor is Dean Johnston and heating and air-conditioning contractor Young and Pratt, all of Austin.

Lutherans To Dedicate Center

The new Lutheran Student Center at The University of Texas will be dedicated Sunday beginning at 4:30 p.m.

Speaker for the occasion will be the Rev. Carl E. Hacker, former campus pastor at the University. The Rev. Harold W. Pennington, Council campus pastor, will conduct the service.

Rev. Hacker came to Austin in 1953 as the first full time NLC

campus pastor to students. Until the time he left in 1959 to take a church in Baltimore, Md., he worked for a permanent facility for students at the University.

The new building includes of-

fices, a classroom, kitchen, lounge, library and meeting hall. Students will use it for two credited courses in Bible, counseling and worship services. It is located at 2200 San Antonio.

Lutherans To Dedicate Center. The Austin American (1914-1973); Austin, Tex. [Austin, Tex]. 07 May 1961: B12.



REV. GUSTAV KOPKA JR.

Reception Welcomes UT Pastor

A reception will be held Sunday at the Lutheran Student Center, 2200 San Antonio, for the Rev. Gustav Kopka Jr., the new student pastor for National Lutheran Council students at The University of Texas, and the executive director of the Lutheran Student Foundation.

The informal reception will be held from 7:30 until 9 p.m. and is open to the public.

Pastor Kopka will be formally installed on Sunday, Sept. 23, at the First English Lutheran Church, 3001 Whitis. He will be installed by the Rev. Vernon A. Mohr, president of the Southern District of the American Luther-

The new student pastor was born in Prussia. He escaped with his family to West Germany in 1945, and came to the United States in 1952.

Pastor Kopka received his B.A. from Concordia College, Moorhead, Minn., and his M.A. from Creighton University in Omaha, Neb. He was graduated from Lutheran Theological Seminary in St. Paul, Minn. in 1958. He did further graduate work at State University of Iowa, Iowa City, Iowa, and at Chicago Theological Seminary in Maywood, Ill.

Before coming to Austin Pastor Kopka served as Minister of Youth and Education at Lutheran Church of the Good Shepherd in Rockford, Ill. for two years.

The pastor, his wife and their two - year - old son, Paul Michael, live at the student parsonage, 2516 Pembroke Trail.

Reception Welcomes UT Pastor. The Austin American (1914-1973); Austin, Tex. [Austin, Tex]. 16 Sep 1962: B5.

Pickets Eye The Avenue

Congress Avenue from the Capitol to Fifth Street — six blocks — will be picketed Saturday from 1 to 5 p.m. by students urging integration of all downtown businesses as well as the passing of an anti-discrimination ordinance for the city.

Ten picketers will be assigned to each block.

Eight hundred students at Austin educational institutions have been invited to participate in the demonstration. Non - picketing demonstrators will meet at a stand-in at 1 p.m. in front of the Paramount Theater.

Transportation to the downtown area will leave at 1 p.m. from these points:

The Presbyterian Student Center, University Baptist Church, Lutheran Student Center, Newman Club Building, Episcopal Seminary Library, Huston - Tillotson Student Union, Wesley Foundation, Whitis Dormitory, Almetris Co-op, Brackenridge Dorm Section D, San Jacinto Dorm D, UT Journalism Building, Christian Faith and Life Community, Disciples Student Fellowship and St. Edward's Andre Hall.

Pickets Eye The Avenue. The Austin Statesman (1921-1973); Austin, Tex. [Austin, Tex]. 08 Mar 1963: A1.

2,300 Member Gain Noted by Lutherans

Texas District of the Lutheran Church, Missouri Synod, has gained more than 2,300 baptized members during the last year, according to Rev. Albert F. Jesse of Austin, district president.

He said the present membership is 79,879. The establishment of five new missions in the state during the past year contributed to the growth. An increase of 17 per cent in the offerings was also noted. A special offering entitled "Carry the Cross" accounted for \$143,000, and has helped make possible the construction of a new Lutheran Student Center at the University of Texas in Austin.

Pres. Jesse reported continued

growth in the areas of parish education, church extension funds and social welfare.

Following his report, Rev. Jesse recognized 10 congregations, 25 pastors and 17 Christian Day School teachers who were received into membership with the 2,500,000 member Lutheran Church — Missouri Synod Tuesday morning. The Rev. Oliver Harms of St. Louis, president of the Missouri Synod, personally welcomed the new members during the constitution signing ceremony.

Forward in Faith is the theme of the convention, and is based on St. Paul's first letter to the Thessalonians, "Let us, who are

2,300 Member Gain Noted by Lutherans. The Austin Statesman (1921-1973); Austin, Tex. [Austin, Tex]. 17 Apr 1963: 16



CHILDREN RECEIVE AN INTRODUCTION TO ARTS AND CRAFTS
Michael Megahan from the Lutheran Student Center tutors

A Place of Learning

The Citywide Committee for Human Rights (CCHR) is demonstrating that simple, local resources can be used to help the educationally disadvantaged.

The CCHR center, a building previously used as a hospital and a school is not only a place of counseling for children and adults but also a place of learning.

To accomplish its secretarial and high school programs, the CCHR uses the facilities of Holy Cross High School at night. The Holy Cross Sisters help conduct the secretarial training classes on Monday and Wednesday from 7-9 p.m.

CCHR has also established an adult tutorial program leading to the high school diploma equivalent. More than 100 adults are enrolled in this program. Twenty persons studying with CCHR have received their high school diplomas from the State Department

of Education since January, 1967.

It usually takes about 11 months to complete the program.

An Austin waiter who had five years of public education received his diploma by studying at the center and was accepted at Huston Tillotson College. He is now attending the University of Texas.

Volunteers are continuously needed at the center at 106-B Concho. The teacher-student relationship is usually on a one-to-one basis and the programs are offered without charge.

CCHR is able to operate its programs because of the cooperation of many different groups including the Lutheran Student Center, the Catholic Student Center, Hillel Foundation, First English Lutheran Church, University Methodist Church, Concordia Lutheran College, Faith Methodist Church, Huston-

Tillotson College, Holy Cross High School, Holy Cross Hospital, the Austin Presbyterian Seminary and St. Edward's University.

CCHR trains persons to take civil service exams and conducts remedial tutoring for children in public and private schools. Individual help is provided for children who have had a specific problem in school.

The CCHR center began in the summer of 1966 meeting only on Saturdays. They now meet six days a week from 4-6 p.m.; Tuesdays and Thursdays from 7-9 p.m. and Tuesdays from 10 a.m. to noon.

Persons interested in registering for a program or tutoring are invited to visit the center from 2-6 p.m. on Saturdays.

CCHR is a non-profit corporation with no income, dependent on local contributions.

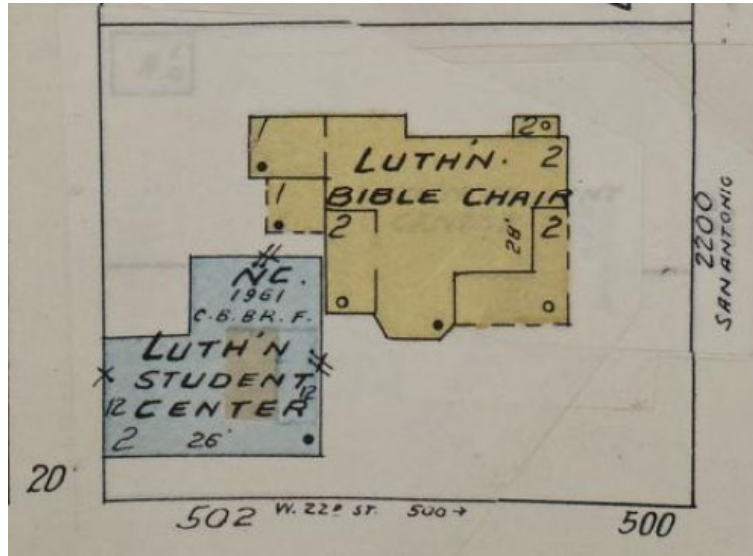
The Program Offers: A Place of Learning

The Austin Statesman (1921-1973); Austin, Tex. [Austin, Tex]. 12 July 1968: 18.

setback of 25 feet from the rear street line.
C15-10-101 University Lutheran Student Center requests a variance to erect a church building providing a lot coverage of 60 per cent of the area behind the front setback line in a "B" Residence, Second Height and Area District at 2100 San Antonio Street. Section 45-35 requires that no more than 55 per cent of the lot shall be covered behind and to the rear of the front setback line.
C15-70-105 Leonard Posner requests a variance to erect a solid fence or

MERCHANDISE		MEI
66-MISCELLANEOUS FOR SALE		66-
azine - pieces	1968 GENERAL Electric washer, has everything. Like new, Moving. First \$50.00 cash. 478-4145.	IVOR
vinylude Box \$19.95; \$29.95; \$39.95; \$49.95; \$59.95; \$69.95; \$79.95; \$89.95; \$99.95; \$109.95; \$119.95; \$129.95; \$139.95; \$149.95; \$159.95; \$169.95; \$179.95; \$189.95; \$199.95; \$209.95; \$219.95; \$229.95; \$239.95; \$249.95; \$259.95; \$269.95; \$279.95; \$289.95; \$299.95; \$309.95; \$319.95; \$329.95; \$339.95; \$349.95; \$359.95; \$369.95; \$379.95; \$389.95; \$399.95; \$409.95; \$419.95; \$429.95; \$439.95; \$449.95; \$459.95; \$469.95; \$479.95; \$489.95; \$499.95; \$509.95; \$519.95; \$529.95; \$539.95; \$549.95; \$559.95; \$569.95; \$579.95; \$589.95; \$599.95; \$609.95; \$619.95; \$629.95; \$639.95; \$649.95; \$659.95; \$669.95; \$679.95; \$689.95; \$699.95; \$709.95; \$719.95; \$729.95; \$739.95; \$749.95; \$759.95; \$769.95; \$779.95; \$789.95; \$799.95; \$809.95; \$819.95; \$829.95; \$839.95; \$849.95; \$859.95; \$869.95; \$879.95; \$889.95; \$899.95; \$909.95; \$919.95; \$929.95; \$939.95; \$949.95; \$959.95; \$969.95; \$979.95; \$989.95; \$999.95; \$1009.95; \$1019.95; \$1029.95; \$1039.95; \$1049.95; \$1059.95; \$1069.95; \$1079.95; \$1089.95; \$1099.95; \$1109.95; \$1119.95; \$1129.95; \$1139.95; \$1149.95; \$1159.95; \$1169.95; \$1179.95; \$1189.95; \$1199.95; \$1209.95; \$1219.95; \$1229.95; \$1239.95; \$1249.95; \$1259.95; \$1269.95; \$1279.95; \$1289.95; \$1299.95; \$1309.95; \$1319.95; \$1329.95; \$1339.95; \$1349.95; \$1359.95; \$1369.95; \$1379.95; \$1389.95; \$1399.95; \$1409.95; \$1419.95; \$1429.95; \$1439.95; \$1449.95; \$1459.95; \$1469.95; \$1479.95; \$1489.95; \$1499.95; \$1509.95; \$1519.95; \$1529.95; \$1539.95; \$1549.95; \$1559.95; \$1569.95; \$1579.95; \$1589.95; \$1599.95; \$1609.95; \$1619.95; \$1629.95; \$1639.95; \$1649.95; \$1659.95; \$1669.95; \$1679.95; \$1689.95; \$1699.95; \$1709.95; \$1719.95; \$1729.95; \$1739.95; \$1749.95; \$1759.95; \$1769.95; \$1779.95; \$1789.95; \$1799.95; \$1809.95; \$1819.95; \$1829.95; \$1839.95; \$1849.95; \$1859.95; \$1869.95; \$1879.95; \$1889.95; \$1899.95; \$1909.95; \$1919.95; \$1929.95; \$1939.95; \$1949.95; \$1959.95; \$1969.95; \$1979.95; \$1989.95; \$1999.95; \$2009.95; \$2019.95; \$2029.95; \$2039.95; \$2049.95; \$2059.95; \$2069.95; \$2079.95; \$2089.95; \$2099.95; \$2109.95; \$2119.95; \$2129.95; \$2139.95; \$2149.95; \$2159.95; \$2169.95; \$2179.95; \$2189.95; \$2199.95; \$2209.95; \$2219.95; \$2229.95; \$2239.95; \$2249.95; \$2259.95; \$2269.95; \$2279.95; \$2289.95; \$2299.95; \$2309.95; \$2319.95; \$2329.95; \$2339.95; \$2349.95; \$2359.95; \$2369.95; \$2379.95; \$2389.95; \$2399.95; \$2409.95; \$2419.95; \$2429.95; \$2439.95; \$2449.95; \$2459.95; \$2469.95; \$2479.95; \$2489.95; \$2499.95; \$2509.95; \$2519.95; \$2529.95; \$2539.95; \$2549.95; \$2559.95; \$2569.95; \$2579.95; \$2589.95; \$2599.95; \$2609.95; \$2619.95; \$2629.95; \$2639.95; \$2649.95; \$2659.95; \$2669.95; \$2679.95; \$2689.95; \$2699.95; \$2709.95; \$2719.95; \$2729.95; \$2739.95; \$2749.95; \$2759.95; \$2769.95; \$2779.95; \$2789.95; \$2799.95; \$2809.95; \$2819.95; \$2829.95; \$2839.95; \$2849.95; \$2859.95; \$2869.95; \$2879.95; \$2889.95; \$2899.95; \$2909.95; \$2919.95; \$2929.95; \$2939.95; \$2949.95; \$2959.95; \$2969.95; \$2979.95; \$2989.95; \$2999.95; \$3009.95; \$3019.95; \$3029.95; \$3039.95; \$3049.95; \$3059.95; \$3069.95; \$3079.95; \$3089.95; \$3099.95; \$3109.95; \$3119.95; \$3129.95; \$3139.95; \$3149.95; \$3159.95; \$3169.95; \$3179.95; \$3189.95; \$3199.95; \$3209.95; \$3219.95; \$3229.95; \$3239.95; \$3249.95; \$3259.95; \$3269.95; \$3279.95; \$3289.95; \$3299.95; \$3309.95; \$3319.95; \$3329.95; \$3339.95; \$3349.95; \$3359.95; \$3369.95; \$3379.95; \$3389.95; \$3399.95; \$3409.95; \$3419.95; \$3429.95; \$3439.95; \$3449.95; \$3459.95; \$3469.95; \$3479.95; \$3489.95; \$3499.95; \$3509.95; \$3519.95; \$3529.95; \$3539.95; \$3549.95; \$3559.95; \$3569.95; \$3579.95; \$3589.95; \$3599.95; \$3609.95; \$3619.95; \$3629.95; \$3639.95; \$3649.95; \$3659.95; \$3669.95; \$3679.95; \$3689.95; \$3699.95; \$3709.95; \$3719.95; \$3729.95; \$3739.95; \$3749.95; \$3759.95; \$3769.95; \$3779.95; \$3789.95; \$3799.95; \$3809.95; \$3819.95; \$3829.95; \$3839.95; \$3849.95; \$3859.95; \$3869.95; \$3879.95; \$3889.95; \$3899.95; \$3909.95; \$3919.95; \$3929.95; \$3939.95; \$3949.95; \$3959.95; \$3969.95; \$3979.95; \$3989.95; \$3999.95; \$4009.95; \$4019.95; \$4029.95; \$4039.95; \$4049.95; \$4059.95; \$4069.95; \$4079.95; \$4089.95; \$4099.95; \$4109.95; \$4119.95; \$4129.95; \$4139.95; \$4149.95; \$4159.95; \$4169.95; \$4179.95; \$4189.95; \$4199.95; \$4209.95; \$4219.95; \$4229.95; \$4239.95; \$4249.95; \$4259.95; \$4269.95; \$4279.95; \$4289.95; \$4299.95; \$4309.95; \$4319.95; \$4329.95; \$4339.95; \$4349.95; \$4359.95; \$4369.95; \$4379.95; \$4389.95; \$4399.95; \$4409.95; \$4419.95; \$4429.95; \$4439.95; \$4449.95; \$4459.95; \$4469.95; \$4479.95; \$4489.95; \$4499.95; \$4509.95; \$4519.95; \$4529.95; \$4539.95; \$4549.95; \$4559.95; \$4569.95; \$4579.95; \$4589.95; \$4599.95; \$4609.95; \$4619.95; \$4629.95; \$4639.95; \$4649.95; \$4659.95; \$4669.95; \$4679.95; \$4689.95; \$4699.95; \$4709.95; \$4719.95; \$4729.95; \$4739.95; \$4749.95; \$4759.95; \$4769.95; \$4779.95; \$4789.95; \$4799.95; \$4809.95; \$4819.95; \$4829.95; \$4839.95; \$4849.95; \$4859.95; \$4869.95; \$4879.95; \$4889.95; \$4899.95; \$4909.95; \$4919.95; \$4929.95; \$4939.95; \$4949.95; \$4959.95; \$4969.95; \$4979.95; \$4989.95; \$4999.95; \$5009.95; \$5019.95; \$5029.95; \$5039.95; \$5049.95; \$5059.95; \$5069.95; \$5079.95; \$5089.95; \$5099.95; \$5109.95; \$5119.95; \$5129.95; \$5139.95; \$5149.95; \$5159.95; \$5169.95; \$5179.95; \$5189.95; \$5199.95; \$5209.95; \$5219.95; \$5229.95; \$5239.95; \$5249.95; \$5259.95; \$5269.95; \$5279.95; \$5289.95; \$5299.95; \$5309.95; \$5319.95; \$5329.95; \$5339.95; \$5349.95; \$5359.95; \$5369.95; \$5379.95; \$5389.95; \$5399.95; \$5409.95; \$5419.95; \$5429.95; \$5439.95; \$5449.95; \$5459.95; \$5469.95; \$5479.95; \$5489.95; \$5499.95; \$5509.95; \$5519.95; \$5529.95; \$5539.95; \$5549.95; \$5559.95; \$5569.95; \$5579.95; \$5589.95; \$5599.95; \$5609.95; \$5619.95; \$5629.95; \$5639.95; \$5649.95; \$5659.95; \$5669.95; \$5679.95; \$5689.95; \$5699.95; \$5709.95; \$5719.95; \$5729.95; \$5739.95; \$5749.95; \$5759.95; \$5769.95; \$5779.95; \$5789.95; \$5799.95; \$5809.95; \$5819.95; \$5829.95; \$5839.95; \$5849.95; \$5859.95; \$5869.95; \$5879.95; \$5889.95; \$5899.95; \$5909.95; \$5919.95; \$5929.95; \$5939.95; \$5949.95; \$5959.95; \$5969.95; \$5979.95; \$5989.95; \$5999.95; \$6009.95; \$6019.95; \$6029.95; \$6039.95; \$6049.95; \$6059.95; \$6069.95; \$6079.95; \$6089.95; \$6099.95; \$6109.95; \$6119.95; \$6129.95; \$6139.95; \$6149.95; \$6159.95; \$6169.95; \$6179.95; \$6189.95; \$6199.95; \$6209.95; \$6219.95; \$6229.95; \$6239.95; \$6249.95; \$6259.95; \$6269.95; \$6279.95; \$6289.95; \$6299.95; \$6309.95; \$6319.95; \$6329.95; \$6339.95; \$6349.95; \$6359.95; \$6369.95; \$6379.95; \$6389.95; \$6399.95; \$6409.95; \$6419.95; \$6429.95; \$6439.95; \$6449.95; \$6459.95; \$6469.95; \$6479.95; \$6489.95; \$6499.95; \$6509.95; \$6519.95; \$6529.95; \$6539.95; \$6549.95; \$6559.95; \$6569.95; \$6579.95; \$6589.95; \$6599.95; \$6609.95; \$6619.95; \$6629.95; \$6639.95; \$6649.95; \$6659.95; \$6669.95; \$6679.95; \$6689.95; \$6699.95; \$6709.95; \$6719.95; \$6729.95; \$6739.95; \$6749.95; \$6759.95; \$6769.95; \$6779.95; \$6789.95; \$6799.95; \$6809.95; \$6819.95; \$6829.95; \$6839.95; \$6849.95; \$6859.95; \$6869.95; \$6879.95; \$6889.95; \$6899.95; \$6909.95; \$6919.95; \$6929.95; \$6939.95; \$6949.95; \$6959.95; \$6969.95; \$6979.95; \$6989.95; \$6999.95; \$7009.95; \$7019.95; \$7029.95; \$7039.95; \$7049.95; \$7059.95; \$7069.95; \$7079.95; \$7089.95; \$7099.95; \$7109.95; \$7119.95; \$7129.95; \$7139.95; \$7149.95; \$7159.95; \$7169.95; \$7179.95; \$7189.95; \$7199.95; \$7209.95; \$7219.95; \$7229.95; \$7239.95; \$7249.95; \$7259.95; \$7269.95; \$7279.95; \$7289.95; \$7299.95; \$7309.95; \$7319.95; \$7329.95; \$7339.95; \$7349.95; \$7359.95; \$7369.95; \$7379.95; \$7389.95; \$7399.95; \$7409.95; \$7419.95; \$7429.95; \$7439.95; \$7449.95; \$7459.95; \$7469.95; \$7479.95; \$7489.95; \$7499.95; \$7509.95; \$7519.95; \$7529.95; \$7539.95; \$7549.95; \$7559.95; \$7569.95; \$7579.95; \$7589.95; \$7599.95; \$7609.95; \$7619.95; \$7629.95; \$7639.95; \$7649.95; \$7659.95; \$7669.95; \$7679.95; \$7689.95; \$7699.95; \$7709.95; \$7719.95; \$7729.95; \$7739.95; \$7749.95; \$7759.95; \$7769.95; \$7779.95; \$7789.95; \$7799.95; \$7809.95; \$7819.95; \$7829.95; \$7839.95; \$7849.95; \$7859.95; \$7869.95; \$7879.95; \$7889.95; \$7899.95; \$7909.95; \$7919.95; \$7929.95; \$7939.95; \$7949.95; \$7959.95; \$7969.95; \$7979.95; \$7989.95; \$7999.95; \$8009.95; \$8019.95; \$8029.95; \$8039.95; \$8049.95; \$8059.95; \$8069.95; \$8079.95; \$8089.95; \$8099.95; \$8109.95; \$8119.95; \$8129.95; \$8139.95; \$8149.95; \$8159.95; \$8169.95; \$8179.95; \$8189.95; \$8199.95; \$8209.95; \$8219.95; \$8229.95; \$8239.95; \$8249.95; \$8259.95; \$8269.95; \$8279.95; \$8289.95; \$8299.95; \$8309.95; \$8319.95; \$8329.95; \$8339.95; \$8349.95; \$8359.95; \$8369.95; \$8379.95; \$8389.95; \$8399.95; \$8409.95; \$8419.95; \$8429.95; \$8439.95; \$8449.95; \$8459.95; \$8469.95; \$8479.95; \$8489.95; \$8499.95; \$8509.95; \$8519.95; \$8529.95; \$8539.95; \$8549.95; \$8559.95; \$8569.95; \$8579.95; \$8589.95; \$8599.95; \$8609.95; \$8619.95; \$8629.95; \$8639.95; \$8649.95; \$8659.95; \$8669.95; \$8679.95; \$8689.95; \$8699.95; \$8709.95; \$8719.95; \$8729.95; \$8739.95; \$8749.95; \$8759.95; \$8769.95; \$8779.95; \$8789.95; \$8799.95; \$8809.95; \$8819.95; \$8829.95; \$8839.95; \$8849.95; \$8859.95; \$8869.95; \$8879.95; \$8889.95; \$8899.95; \$8909.95; \$8919.95; \$8929.95; \$8939.95; \$8949.95; \$8959.95; \$8969.95; \$8979.95; \$8989.95; \$8999.95; \$9009.95; \$9019.95; \$9029.95; \$9039.95; \$9049.95; \$9059.95; \$9069.95; \$9079.95; \$9089.95; \$9099.95; \$9109.95; \$9119.95; \$9129.95; \$9139.95; \$9149.95; \$9159.95; \$9169.95; \$9179.95; \$9189.95; \$9199.95; \$9209.95; \$9219.95; \$9229.95; \$9239.95; \$9249.95; \$9259.95; \$9269.95; \$9279.95; \$9289.95; \$9299.95; \$9309.95; \$9319.95; \$9329.95; \$9339.95; \$9349.95; \$9359.95; \$9369.95; \$9379.95; \$9389.95; \$9399.95; \$9409.95; \$9419.95; \$9429.95; \$9439.95; \$9449.95; \$9459.95; \$9469.95; \$9479.95; \$9489.95; \$9499.95; \$9509.95; \$9519.95; \$9529.95; \$9539.95; \$9549.95; \$9559.95; \$9569.95; \$9579.95; \$9589.95; \$9599.95; \$9609.95; \$9619.95; \$9629.95; \$9639.95; \$9649.95; \$9659.95; \$9669.95; \$9679.95; \$9689.95; \$9699.95; \$9709.95; \$9719.95; \$9729.95; \$9739.95; \$9749.95; \$9759.95; \$9769.95; \$9779.95; \$9789.95; \$9799.95; \$9809.95; \$9819.95; \$9829.95; \$9839.95; \$9849.95; \$9859.95; \$9869.95; \$9879.95; \$9889.95; \$9899.95; \$9909.95; \$9919.95; \$9929.95; \$9939.95; \$9949.95; \$9959.95; \$9969.95; \$9979.95; \$9989.95; \$9999.95; \$10009.95; \$10019.95; \$10029.95; \$10039.95; \$10049.95; \$10059.95; \$10069.95; \$10079.95; \$10089.95; \$10099.95; \$10109.95; \$10119.95; \$10129.95; \$10139.95; \$10149.95; \$10159.95; \$10169.95; \$10179.95; \$10189.95; \$10199.95; \$10209.95; \$10219.95; \$10229.95; \$10239.95; \$10249.95; \$10259.95; \$10269.95; \$10279.95; \$10289.95; \$10299.95; \$10309.95; \$10319.95; \$10329.95; \$10339.95; \$10349.95; \$10359.95; \$10369.95; \$10379.95; \$10389.95; \$10399.95; \$10409.95; \$10419.95; \$10429.95; \$10439.95; \$10449.95; \$10459.95; \$10469.95; \$10479.95; \$10489.95; \$10499.95; \$10509.95; \$10519.95; \$10529.95; \$10539.95; \$10549.95; \$10559.95; \$10569.95; \$10579.95; \$10589.95; \$10599.95; \$10609.95; \$10619.95; \$10629.95; \$10639.95; \$10649.95; \$10659.95; \$10669.95; \$10679.95; \$10689.95; \$10699.95; \$10709.95; \$10719.95; \$10729.95; \$10739.95; \$10749.95; \$10759.95; \$10769.95; \$10779.95; \$10789.95; \$10799.95; \$10809.95; \$10819.95; \$10829.95; \$10839.95; \$10849.95; \$10859.95; \$10869.95; \$10879.95; \$10889.95; \$10899.95; \$10909.95; \$10919.95; \$10929.95; \$10939.95; \$10949.95; \$10959.95; \$10969.95; \$10979.95; \$10989.95; \$10999.95; \$11009.95; \$11019.95; \$11029.95; \$11039.95; \$11049.95; \$11059.95; \$11069.95; \$11079.95; \$11089.95; \$11099.95; \$11109.95; \$11119.95; \$11129.95; \$11139.95; \$11149.95; \$11159.95; \$11169.95; \$11179.95; \$11189.95; \$11199.95; \$11209.95; \$11219.95; \$11229.95; \$11239.95; \$11249.95; \$11259.95; \$11269.95; \$11279.95; \$11289.95; \$11299.95; \$11309.95; \$11319.95; \$11329.95; \$11339.95; \$11349.95; \$11359.95; \$11369.95; \$11379.95; \$11389.95; \$11399.95; \$11409.95; \$11419.95; \$11429.95; \$11439.95; \$11449.95; \$11459.95; \$11469.95; \$11479.95; \$11489.95; \$11499.95; \$11509.95; \$11519.95; \$11529.95; \$11539.95; \$11549.95; \$11559.95; \$11569.95; \$11579.95; \$11589.95; \$11599.95; \$11609.95; \$11619.95; \$11629.95; \$11639.95; \$11649.95; \$11659.95; \$11669.95; \$11679.95; \$11689.95; \$11699.95; \$11709.95; \$11719.95; \$11729.95; \$11739.95; \$11749.95; \$11759.95; \$11769.95; \$11779.95; \$11789.95; \$11799.95; \$11809.95; \$11819.95; \$11829.95; \$11839		

Maps



1962 Sanborn Fire Insurance map

Permits

101 19 1/2 x 17
DLK 35
SEC 46

WATER SERVICE PERMIT
Austin, Texas

Received of LUTHERAN STUDENT CENTER Date 5-1-61
Address 2200 SAN ANTONIO
Amount SIXTY-FIVE \$ 65.00
Plumber P.G. SOSA Size of Tap 1"

Date of Connection 5-18-61
Size of Tap Made 1"
Size Service Made 1"
Size Main Tapped 6" C.I.
From Front Prop. Line to Curb Cock 8'
From So. Prop. Line to Curb Cock 22'
Location of Meter Curb
Type of Box Round
Depth of Main in St. 3'
Depth of Service Line 2'
From Curb Cock to Tap on Main 13'
Closest to Meter Dept. 13'

No. Fittings	Size	Description
1	15" Pipe	Cop. to Iron ell
1	15" Pipe	Cop. to Cop. ell
1	15" Pipe	Cop. to Iron Coupling
1	15" Pipe	Cop. to Cop. Coupling
1	15" Pipe	Angle Stop
1	15" Pipe	Stop
1	9" x 1" Brass	Bushing
1	9" x 1" Brass	Nipples
1	9" x 1" Brass	Service Clamp
1	9" x 1" Brass	Valve
1	9" x 1" Brass	Meter Box
1	9" x 1" Brass	Lock Lid
1	9" x 1" Brass	Drain Tile
1	9" x 1" Brass	Drain Tile Lid
1	9" x 1" Brass	Stop & Drain
1	9" x 1" Brass	Job No. <u>W-373-502</u>
1	9" x 1" Brass	Foreman <u>A. P. Hall</u>

INDEXED

Water tap permit, 1961

Lutheran Student Center 2200 San Antonio St.

46 19 1/2 & 19 35

Louis Horsts

Masonry two story addn to Lutheran Student Center

78018 11-15-60 33,500.00

J.C. Cline (B&J Bldg.) plans

W. on lot S. on lot

LUTHERAN STUDENT CENTER

ADDRESS: 2200 San Antonio St		LOT: 19+19 1/2		BLK. 35		SUB. Louis Horsts	
PLAT: 46		FIRE ZONE 3		USE DIST. B		H & A DIST. 2	
OCCUPANCY: Church to Center							
LAYOUT		FRAMING		FINAL		78018	
11/15/60	PRINC. BLDG.	ACC. BLDG.	2/16/61	PRINC. BLDG.	ACC. BLDG.	3/29/61	PRINC. BLDG.
FOUNDATION	25		FLOOR-JOIST SIZE & O.C.	—		NECESSARY BLDG. CONN.	✓
FR. SETBACK	25		CEILING-JOIST SIZE & O.C.	2x10		ROOM VENTILATION	
AGGREGATE & MIN. SIDE YD.	30		STUD SIZE & O.C.	—		WATER & SEWER RELEASE	
SIDE STREET YARD	10		MASONRY WALL	8x12		PLMB. DEPT. RELEASE	
			STAIRS REQ. AND NO.			HEATING & A/C RELEASE	
			ATTIC FIRE STOPS REQ.			ELECTRIC DEPT. RELEASE	
			FIRE WALLS REQ. & NO.			ENG. DEPT. RELEASE	
			ROOF OVERHANG	0		FIRE MARSHAL RELEASE	
						ROOF OVERHANG	✓
						PAVED PARK REQ. & NO.	
SPECIAL NOTES							
47.8 x 50 - 488 + 2nd floor of 1668 = 3814							

Addition inspection card, 1961

Church
 OWNER University Baptist ADDRESS 2200 San Antonio ST.
 PLAT 46 LOT 19 1/2 & 19 BLK
 SUBDIVISION Louis Horsts
 OCCUPANCY Church Offices
 BLD PERMIT # 150898 DATE 7-25-75 OWNERS ESTIMATE \$7,000
 CONTRACTOR Douglas H. Hicks NO. OF FIXTURES see plans
 WATER TAP REC # SEWER TAP REC #
 remodel comm bldg. to create church office

Remodel permit, 1975