

## **PLANS AND SPECIFICATIONS OF PROPOSED WORK**

### SCOPE:

The selected contractor will deliver and install, supervise, provide material and labor for the repointing of the visible and confirmed damaged mortar at the Paramount Theatre's east wall. The east wall will also be repaired in vulnerable areas such as lentils, sills and water tables. The wall will be patched and repaired in all needed areas. All unused nails, pipe, etc. will be removed from the wall. All penetrations will be patched and repaired.

Repair and reseal west upper exterior stage wall. This area was coated in a roofing tar of sorts and has clear air pockets and penetrations. They must be stripped, repaired, patched, and resealed with an isothermal protective coat.

Rebuild exterior stage parapet. The area was removed where steel beams were installed to house a condenser unit no longer in use. The platform will be removed by crane, and the parapet will be repaired to stop water intrusion.

### GROUT & BRICK RESTORATION:

Mortar has been lab tested and samples have been manufactured to match original mortar makeup, and was previously approved by Historic Landmark Commission and Texas Historical Commission.

### DEBRIS DISPOSAL:

There will be a daily cleanup of debris and a clean workspace will be maintained throughout the duration of the project. Contractor will dispose of all debris.

### ACCESS TO STRUCTURE:

The east wall will be accessed by mobile scaffolding/swing stage scaffolding units and ladders where possible, and will be inspected daily by a certified inspector.

### PERMITS:

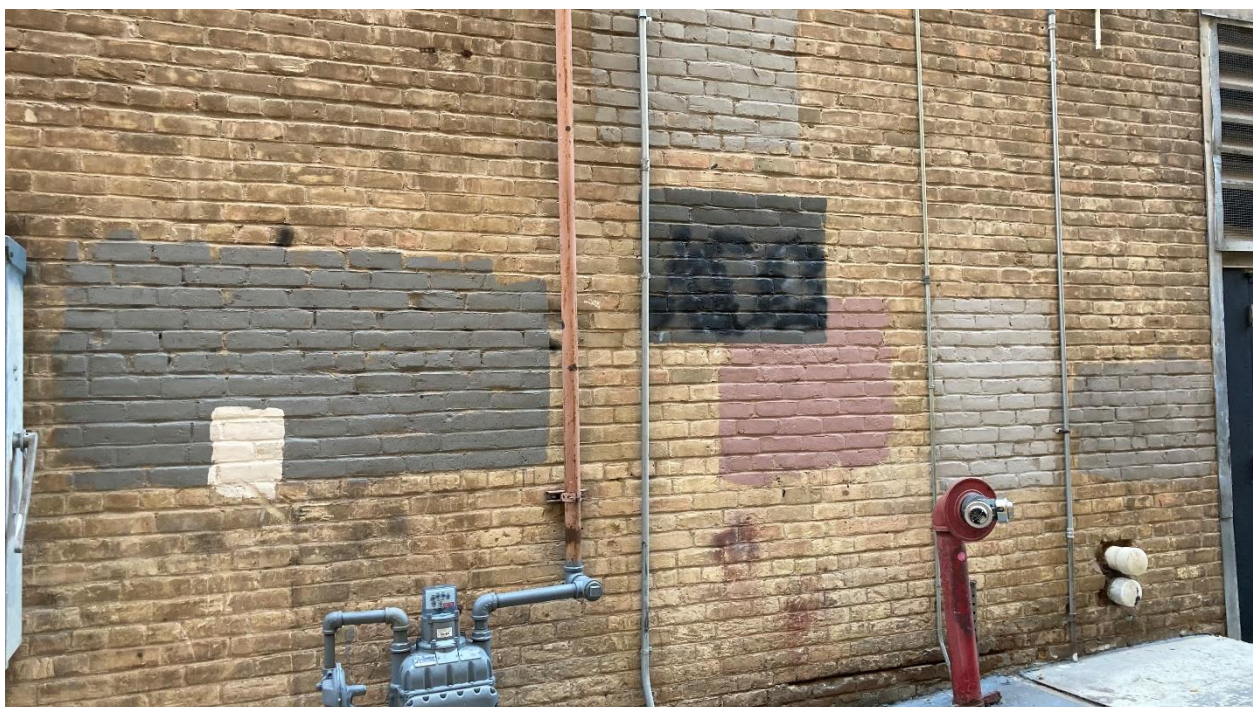
All permits and pedestrian protection & safety to be provided by contractor. All methods will be compliant with OSHA and City of Austin.

# PARAMOUNT EAST WALL - PROJECT AREA PHOTOS

1.



2.

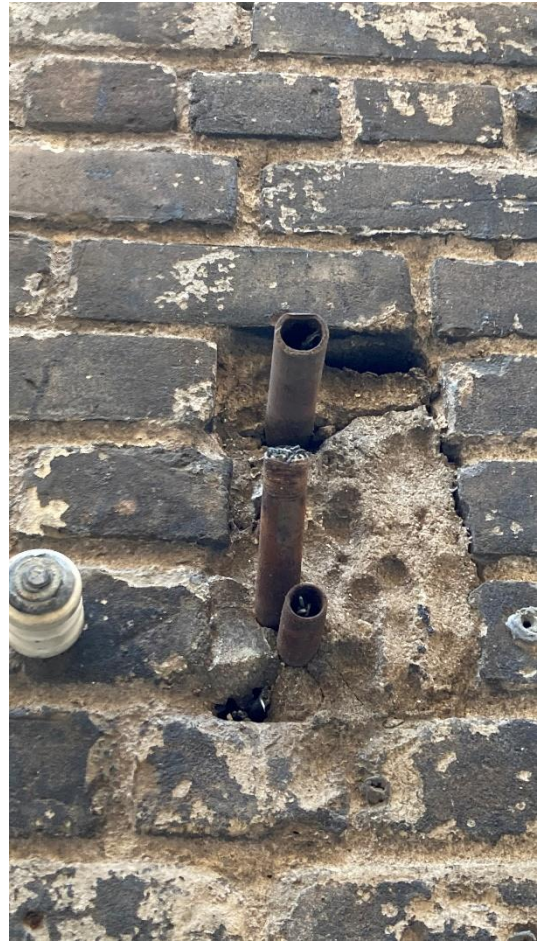


3.





4.



5.



6.



7.





8.



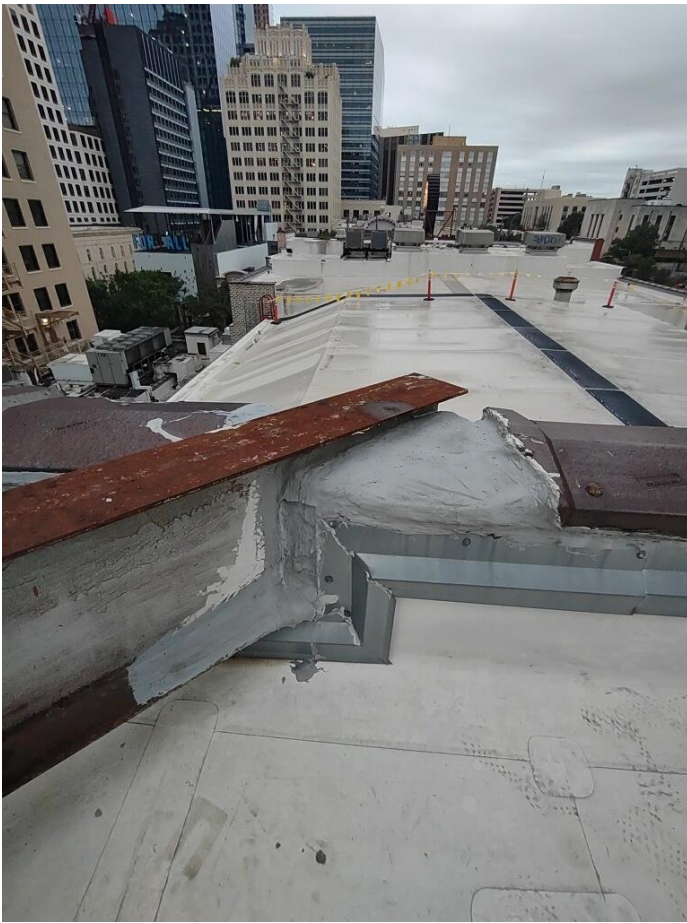
9.



10.



11.



12.



13.



14.



15.



16.



17.



18.



19.



20.





21.



22.



23.





24.



25.



26.



1. Paramount East Wall
2. Paramount East Wall north of stage door
3. Paramount East Wall lower central portion
4. Paramount East Wall center
5. Paramount East Wall west wall 16' above surface grade. Abandoned pipes to be removed and area to be filled.
6. Paramount East Wall center lower
7. Paramount East Wall center lower
8. Paramount parapet southwest corner upper stage roof. Iron structure to be removed. Walls to be filled, flashed and coping installed
9. Paramount parapet southwest corner upper stage roof. Iron structure to be removed. Walls to be filled, flashed and coping installed
10. Paramount parapet southwest corner upper stage roof. Iron structure to be removed. Walls to be filled, flashed and coping installed
11. Paramount upper stage roof parapet penetration
12. Paramount upper stage roof parapet penetration
13. Paramount upper stage roof parapet penetration
14. Paramount upper west stage wall south portion
15. Paramount upper west stage wall south portion damage
16. Paramount upper west stage wall damage
17. Paramount upper west stage wall south upper parapet penetration
18. Paramount upper west stage wall north portion
19. Paramount upper west stage wall center portion
20. Paramount upper west stage wall south portion
21. Paramount upper west stage wall south portion damage
22. Paramount upper stage roof parapet penetration
23. Paramount upper stage roof parapet penetration
24. Paramount upper stage roof parapet penetration
25. Paramount upper west wall south portion damage
26. Paramount upper west wall north damage