



RMC Monthly Report

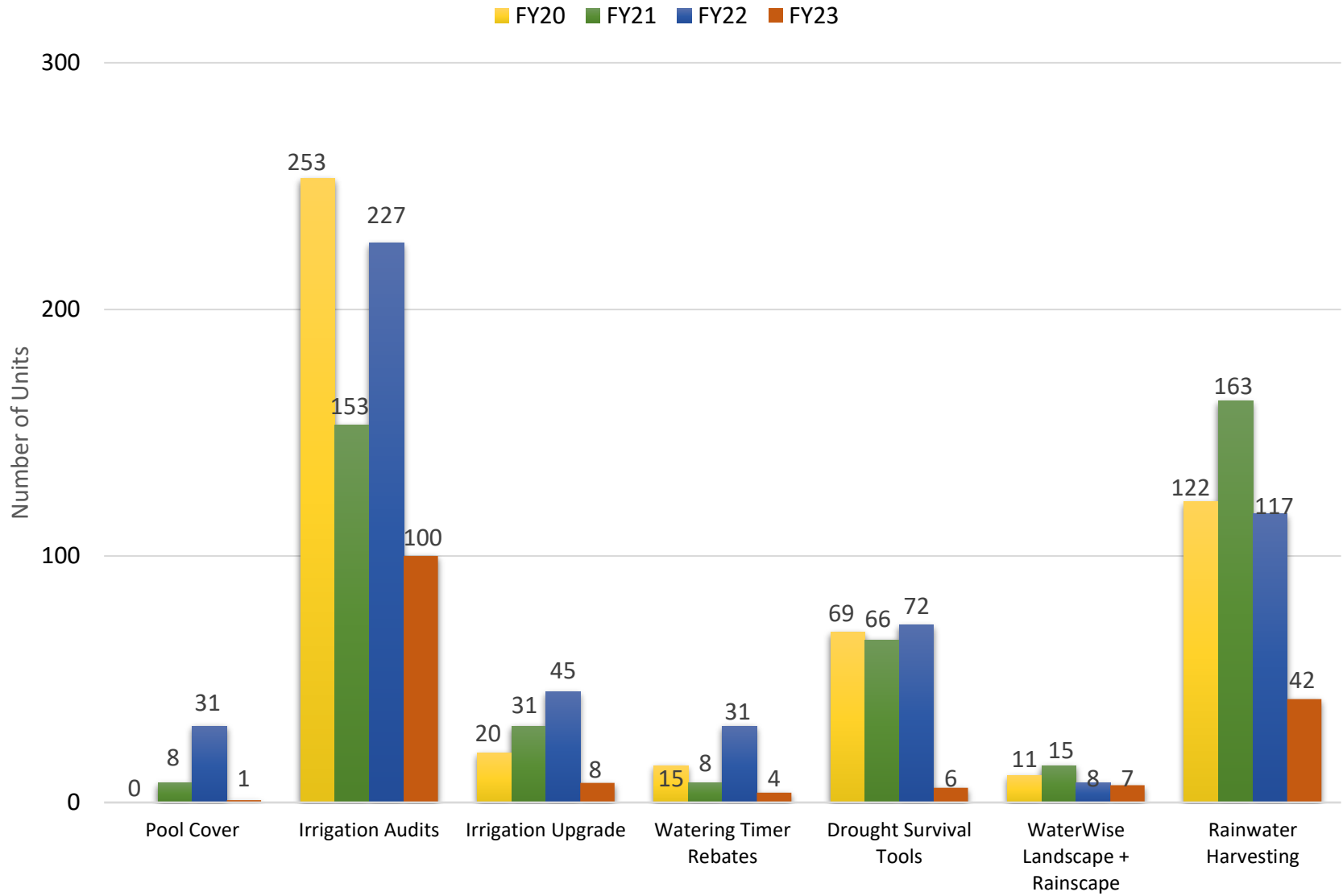
March 2023

FY23

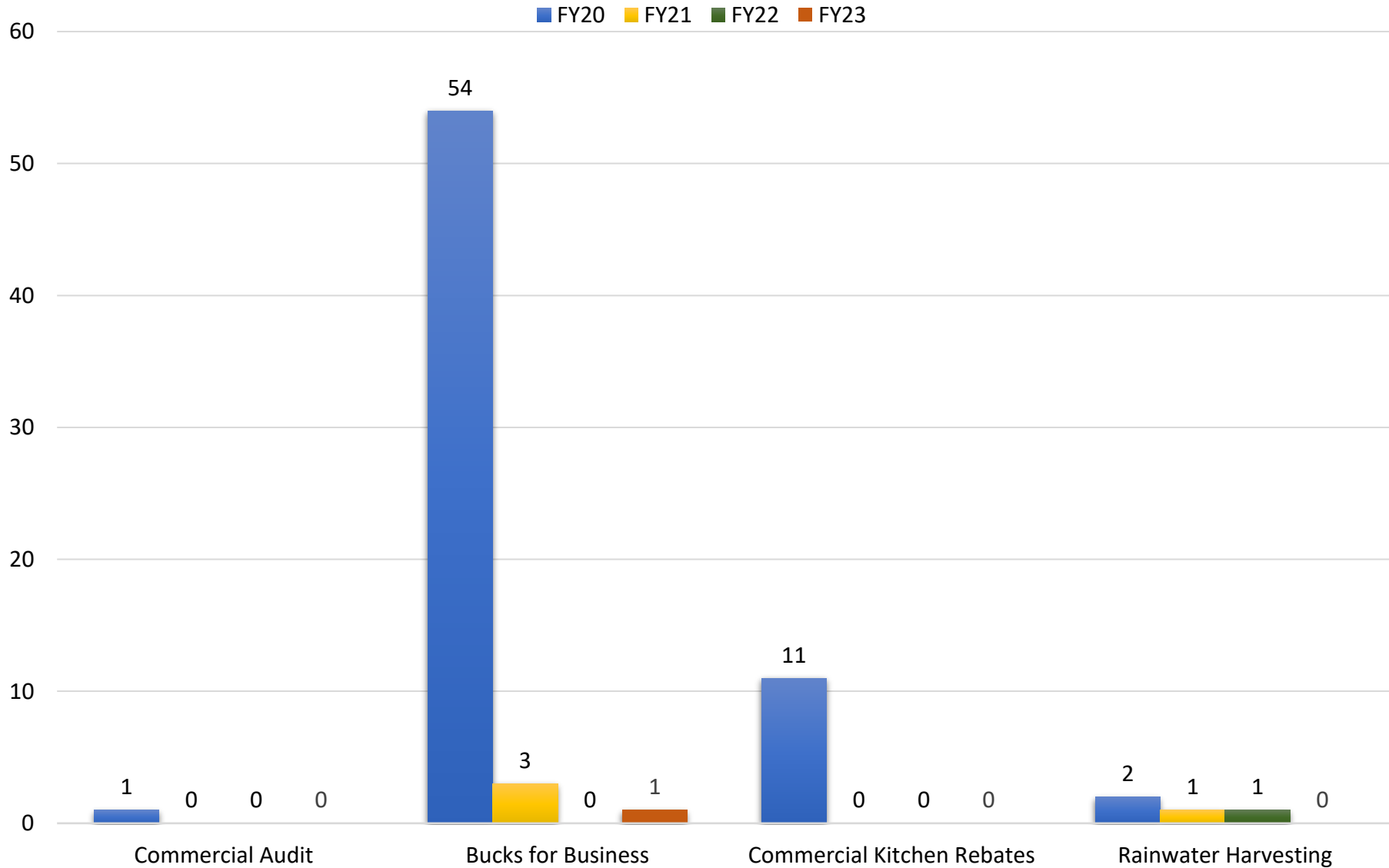
Water Conservation Division
City of Austin | Austin Water



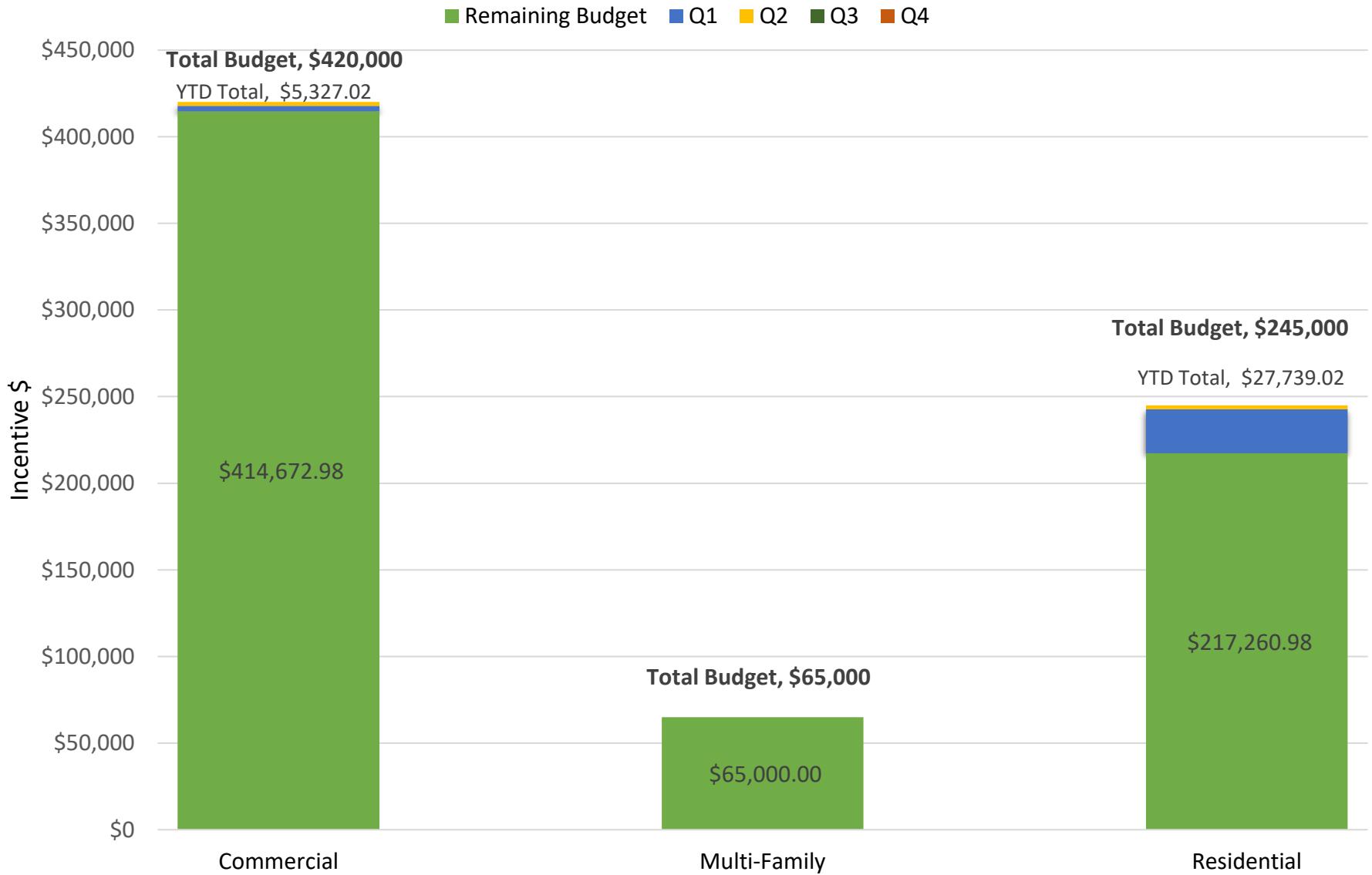
Residential Program Participation, FY23 YTD



Commercial and Multifamily Program Participation, FY23 YTD

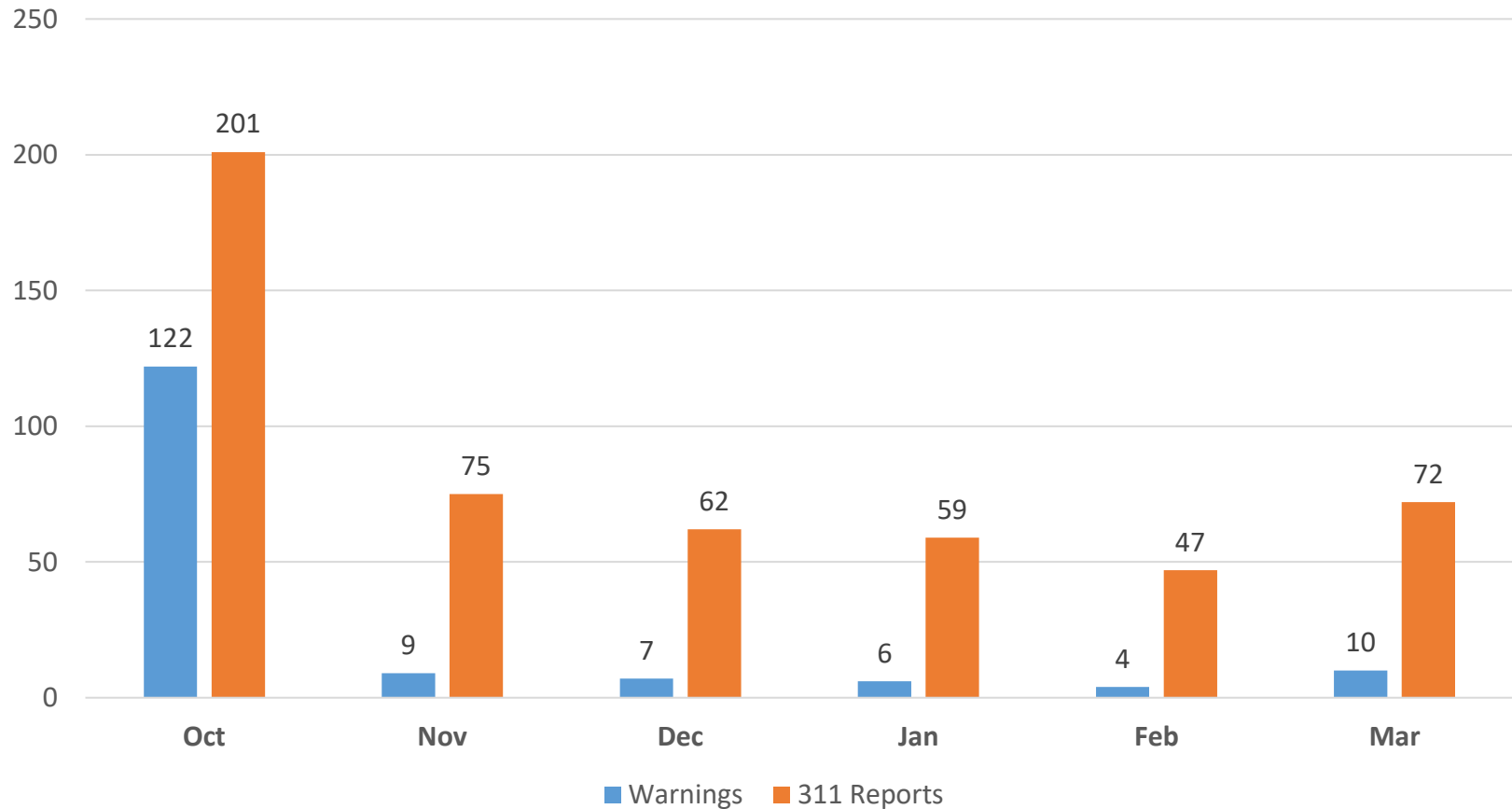


Rebates and Incentives Budget, FY23 YTD



Water Waste/Watering Restrictions Enforcement Activity, FY23 YTD

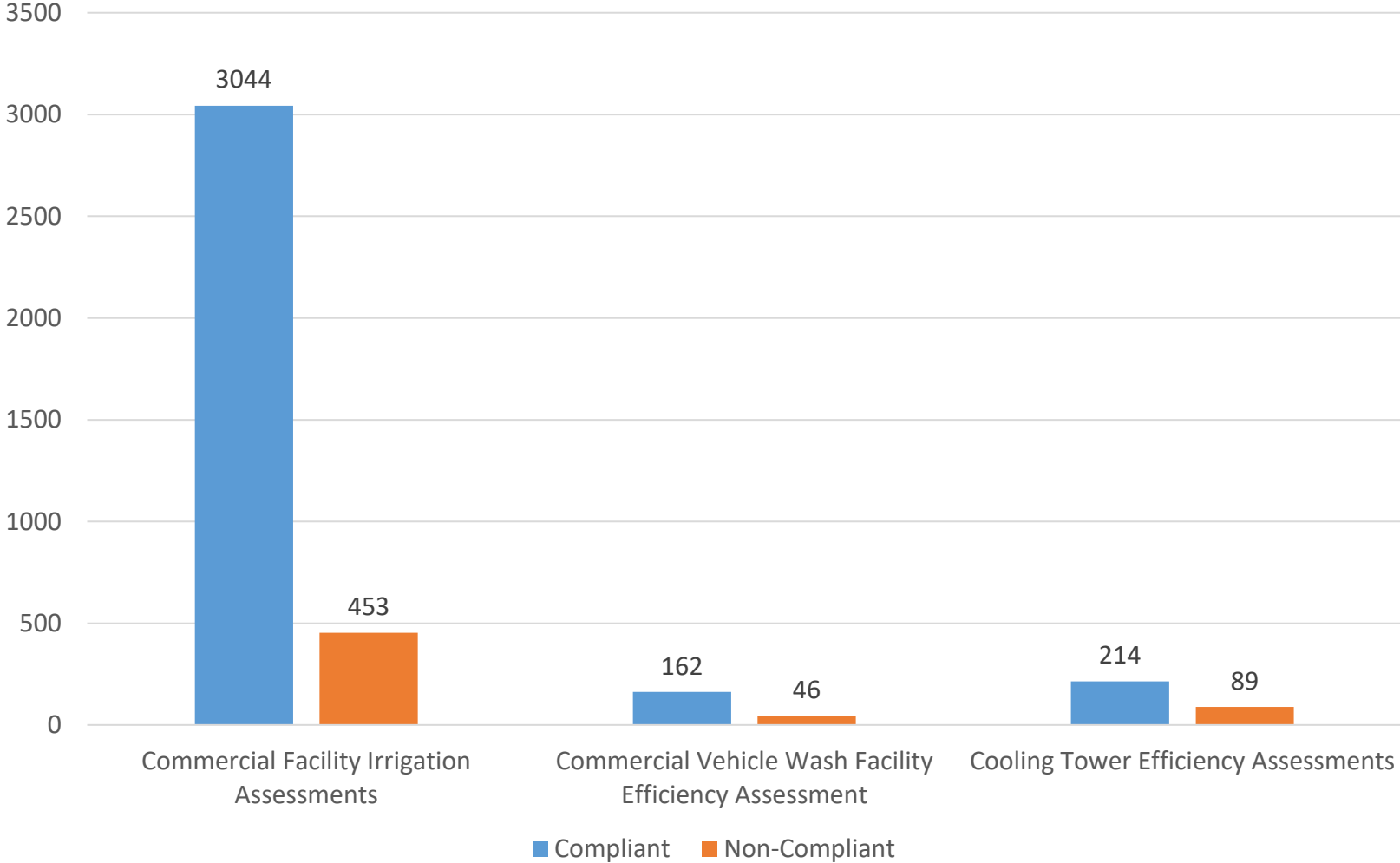
Warnings Issued and 311 Reports



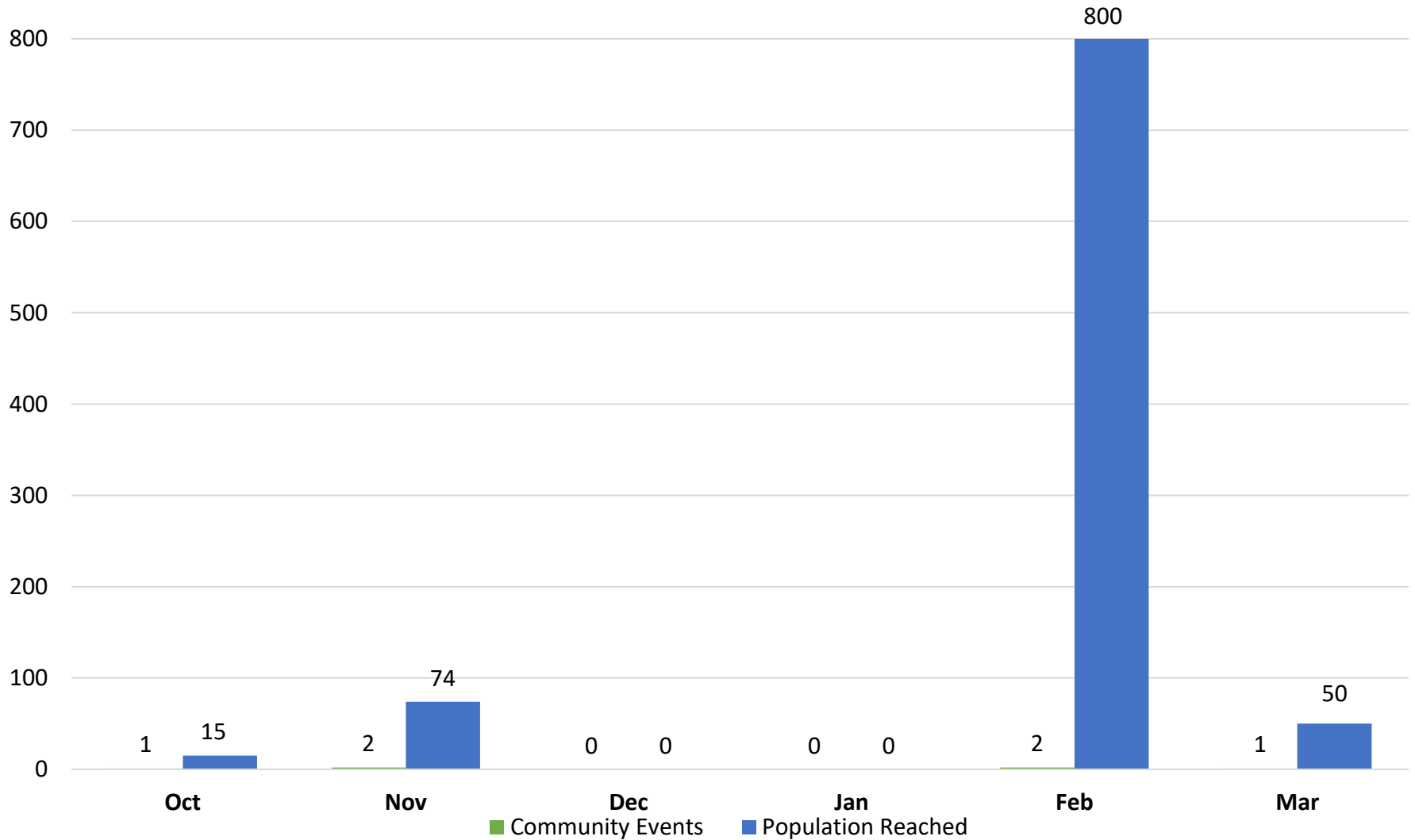
March Drought Response Stage: Stage 1



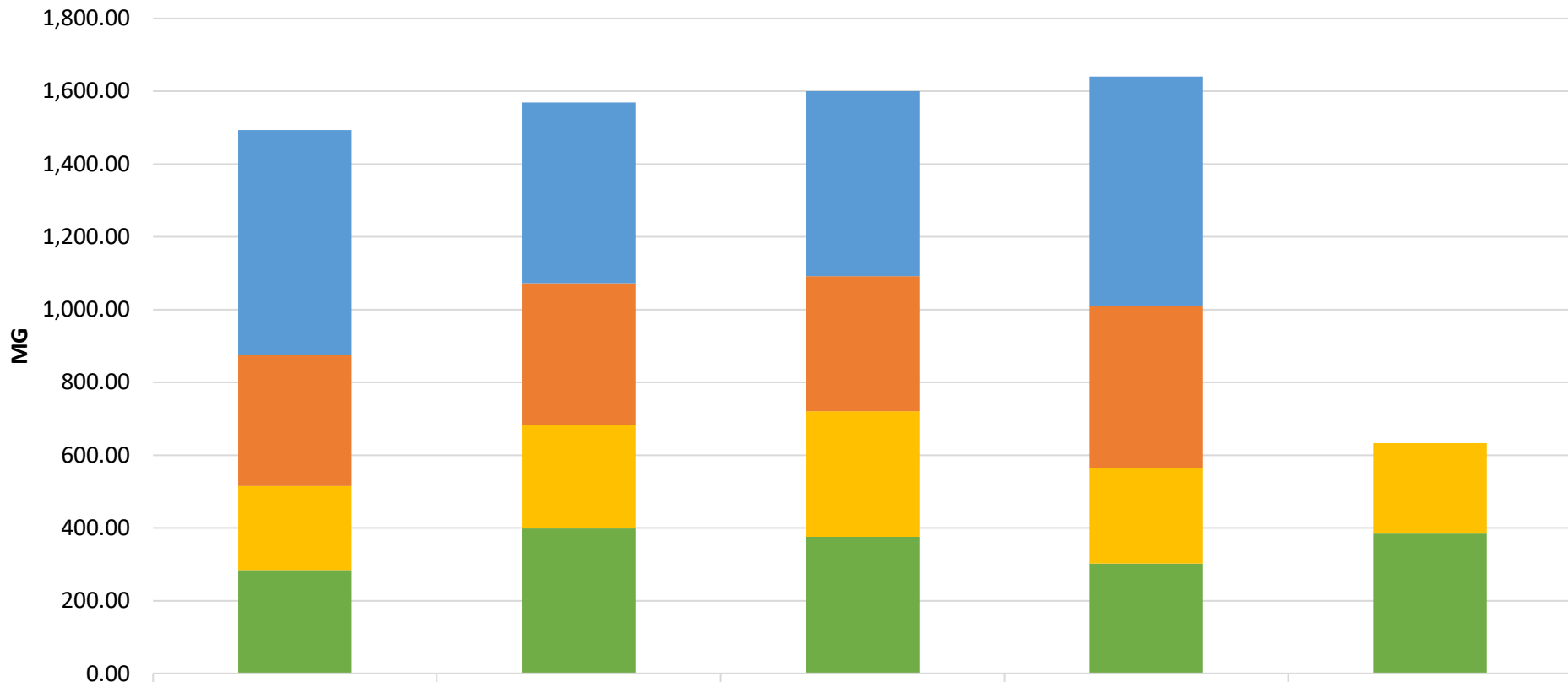
Regulated Compliance Program Activity, March 2023



Public Outreach Events, FY23 YTD

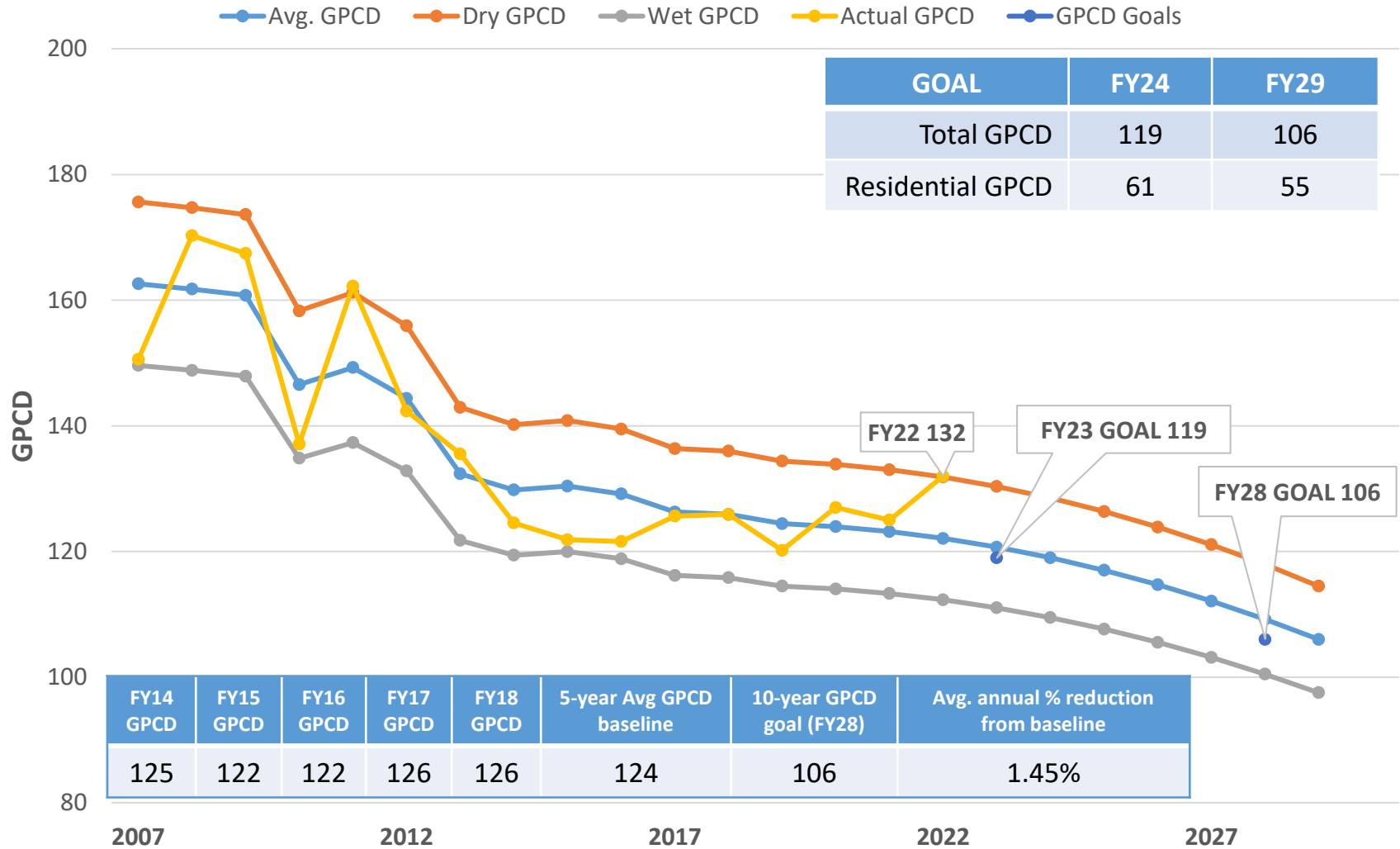


Reclaimed Water Use



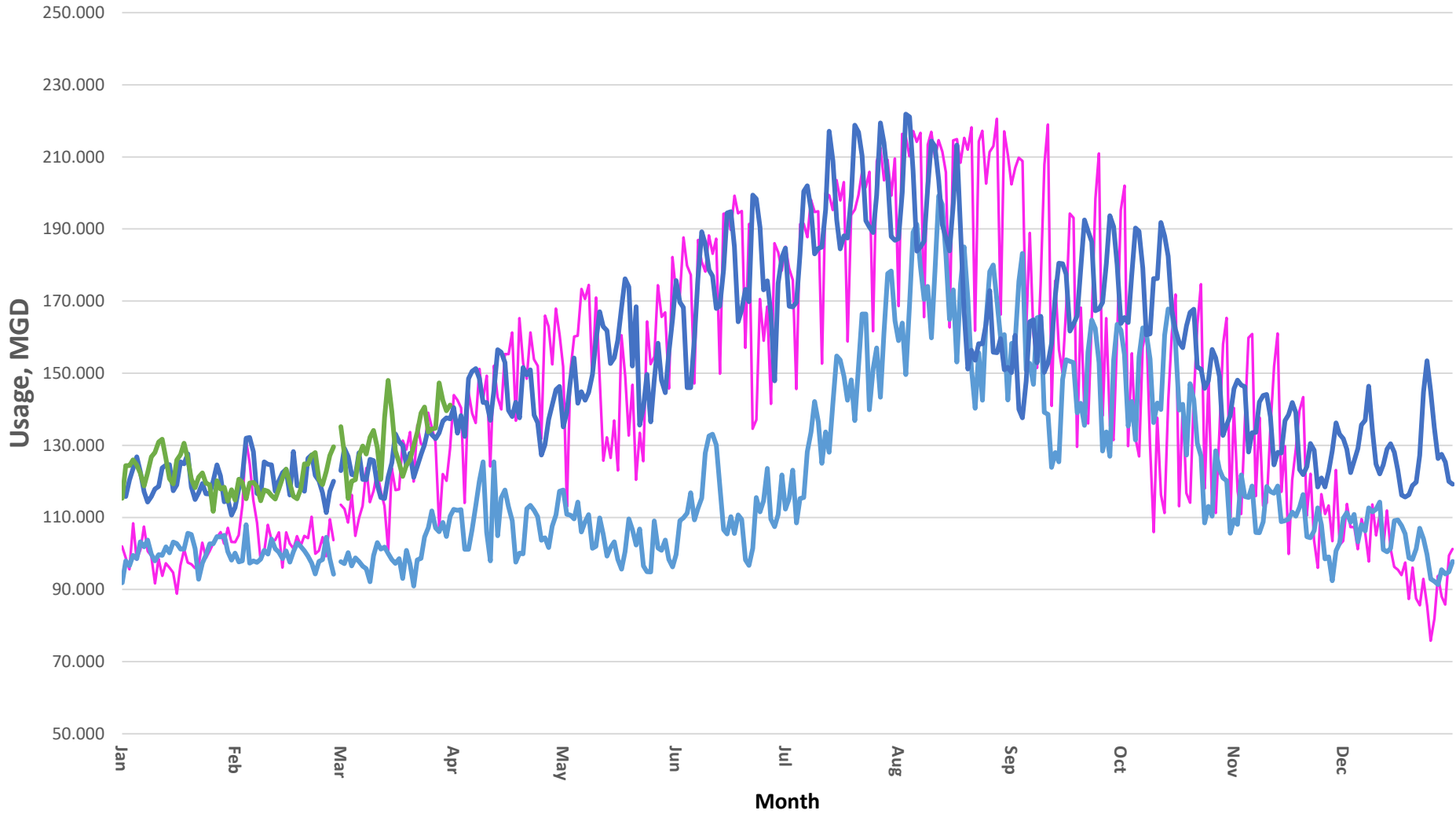
	FY19	FY20	FY21	FY22	FY23
■ Quarter IV	616.60	496.91	507.97	630.48	
■ Quarter III	361.47	389.94	370.96	444.20	
■ Quarter II	230.84	284.04	345.25	263.44	248.48
■ Quarter I	284.14	398.30	375.67	302.27	384.91

Water Use - Gallons Per Capita Per Day (GPCD)

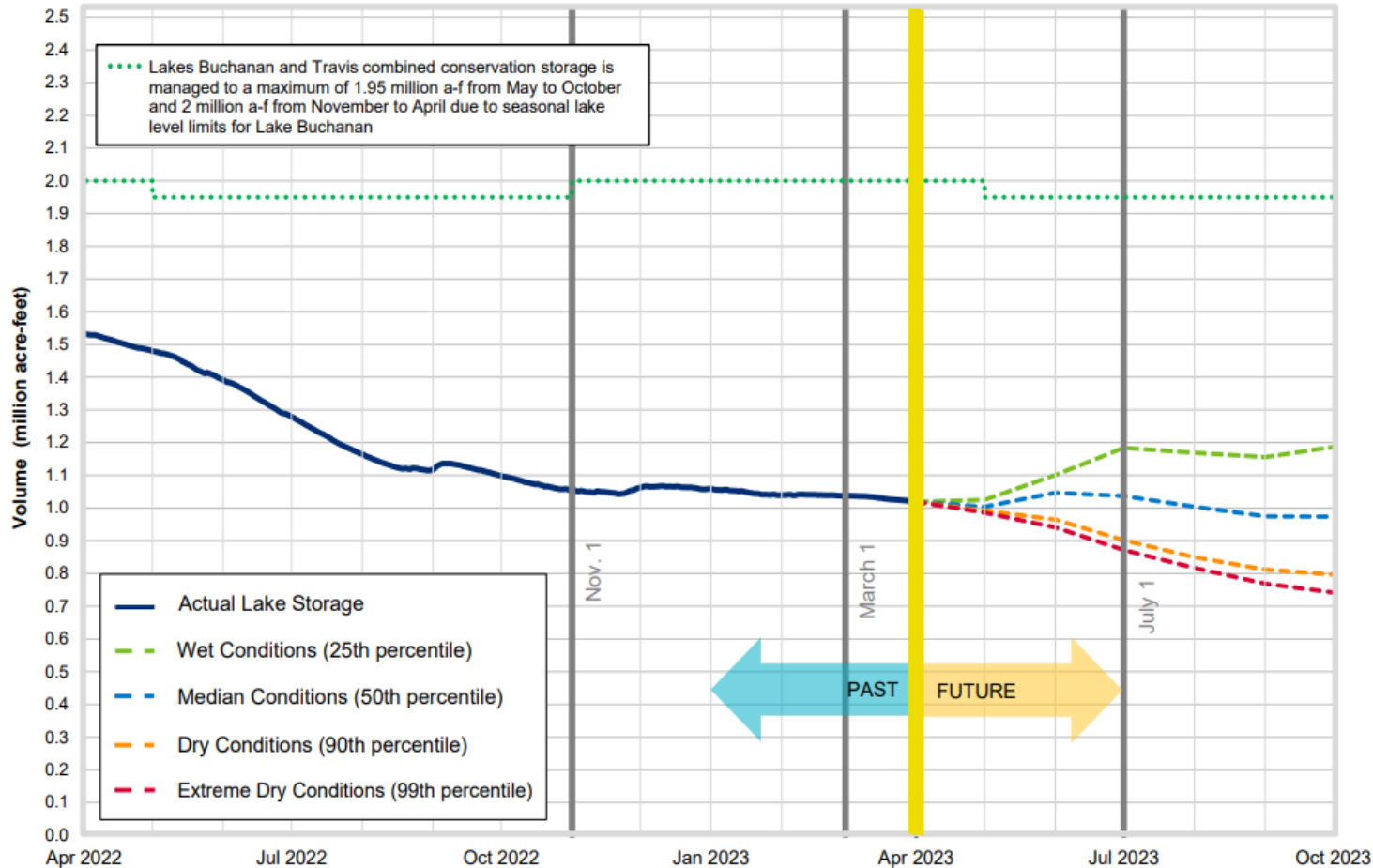


Multi-Year Daily Water Usage

— 2011 "Dry Year" — 2015 "Wet Year" — 2022 — 2023



Lakes Buchanan and Travis Total Combined Storage Projections



Date: April 1, 2023
 Note: One acre-foot equals 325,851 gallons

Highland Lakes Storage summary as of April 10, 2023
Combined lake storage: 1.016 million acre feet
Combined reservoir total: 51%

City of Austin Drought Contingency Plan Drought Response Stage Triggers:

Conservation Stage:
 Above 1.4 MAF

Stage I:
 1.4 MAF

Stage II:
 900,000 AF

Stage III:
 600,000 AF

Emergency Response Stage IV:
 Catastrophic event including prolonged drought



Water Conservation Division
City of Austin | Austin Water

