



AUSTIN LIGHT RAIL UPDATE

Bicycle Advisory Council
April 18, 2023

WHAT IS LIGHT RAIL

- Light rail is an electric train system used in metropolitan areas
- Light rail is part of the overall transit network, connecting people to key destinations where they live, work and play to improve:
 - **Mobility**
 - **Connectivity**
 - **Affordability**
 - **Sustainability**

ARTIST REPRESENTATIONS



Light Rail Vehicle



Light Rail Vehicle Interior



Guadalupe Street at UT Austin



Multi-Modal Connectivity



Station View at Pleasant Valley

PRECEDENTS



Paris, France



Portland, Oregon



Sydney, Australia



Seattle, Washington



Ontario, Canada

AUSTIN'S PATH TO LIGHT RAIL

Light Rail
Implementation
Plan Update

2016

- Austin Strategic Mobility Plan (ASMP)
- Project Connect visioning kickoff

2019

- ASMP approved

2020

- **Austin votes to invest in Project Connect**
- **Austin Transit Partnership (ATP) formed**

2021-2023

- Light Rail Implementation Plan development and preliminary engineering

JUNE 2023

- ATP Board, CapMetro Board, and City Council approve updated Light Rail Implementation Plan

- Advance Austin's light rail program



Community Dialogue

MEASURES AND VALUES



Financial Viability



Technical Feasibility



Federal Transit Administration (FTA) Criteria for Federal Funding



Planning Data



Community Values



Connects with Austin's Current and Future Transit System

MEASURES AND VALUES



Multimodal Connectivity



Accessibility / Universal Design



Healthcare Facilities



Education



Greenhouse Gas Emissions Reductions



Environmental Benefits / Impacts



Affordable Housing

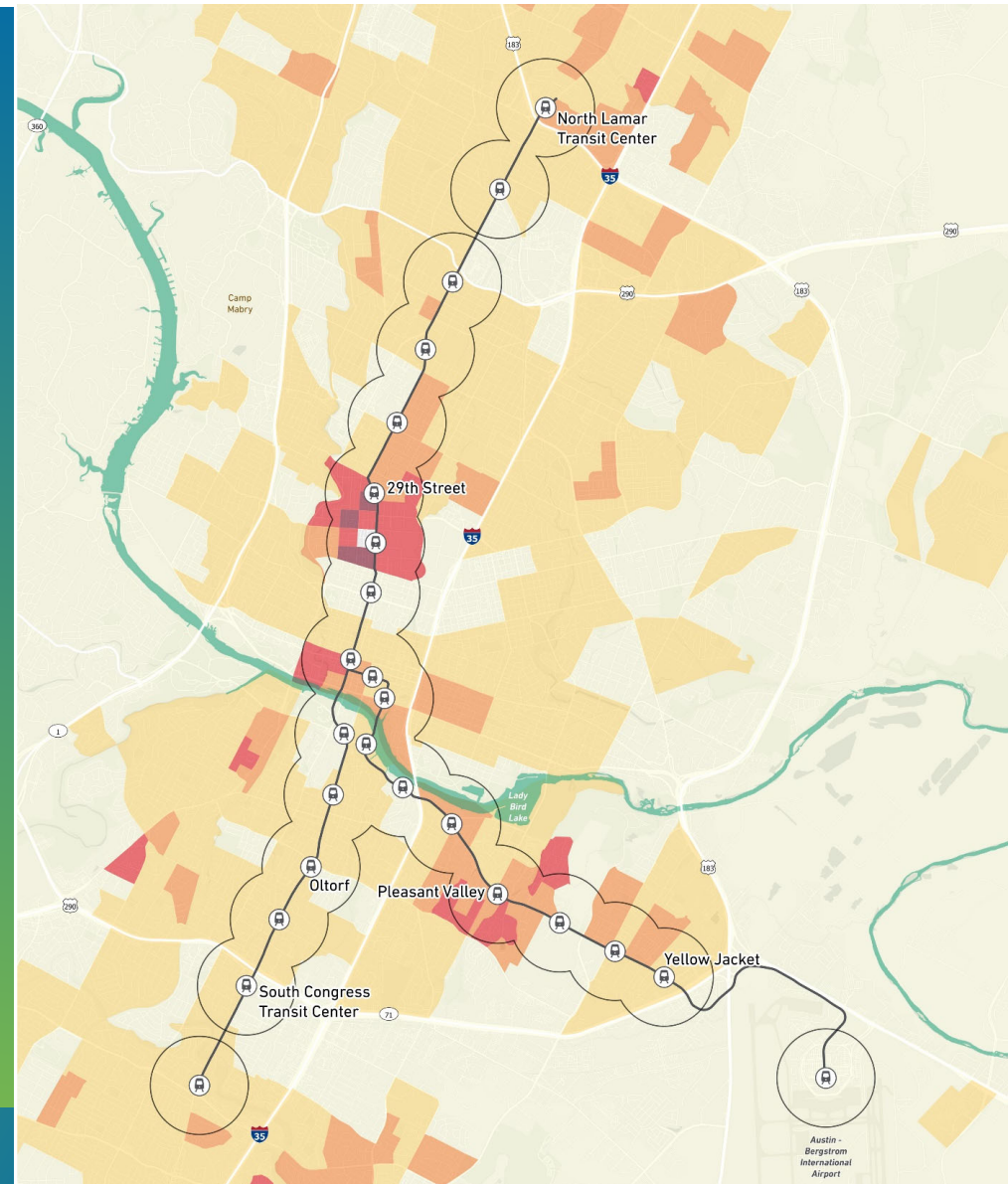


POPULATION DENSITY

Census 2020

LEGEND

- Station
 - 0.5 mi radius from station
 - Study Area
- People per square mile
- | | |
|---------------|-----------------|
| 0 - 3,800 | 8,801 - 18,000 |
| 3,801 - 8,800 | 18,001 - 41,000 |
| | 41,001 + |









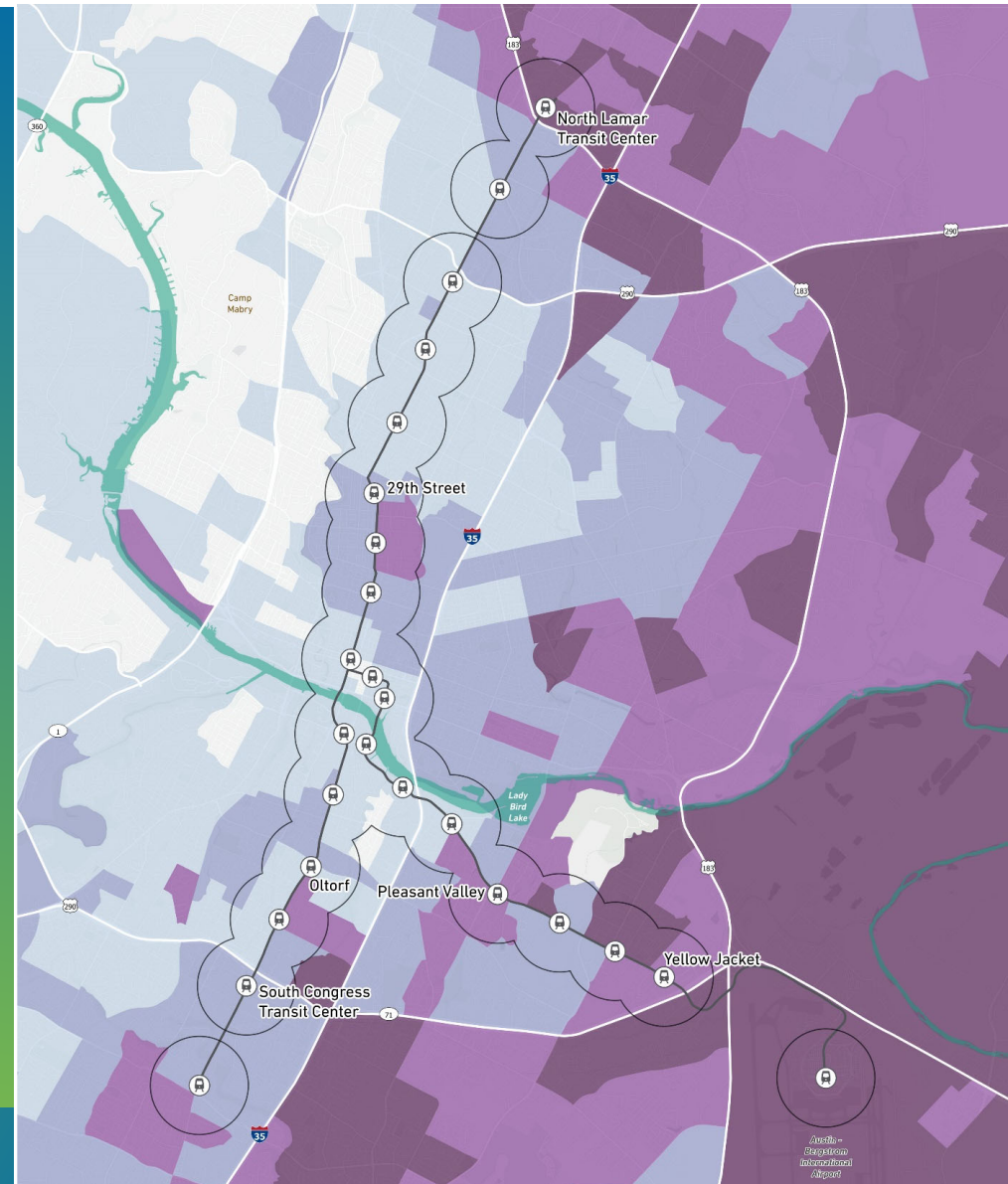
BIPOC SHARE OF POPULATION

Black, Indigenous, & People of Color

Census 2020

LEGEND

 Station	BIPOC Share	 41 - 60%
 0.5 mi radius from station	1 - 20%	 61 - 80%
 Study Area	21 - 40%	 81 - 100%



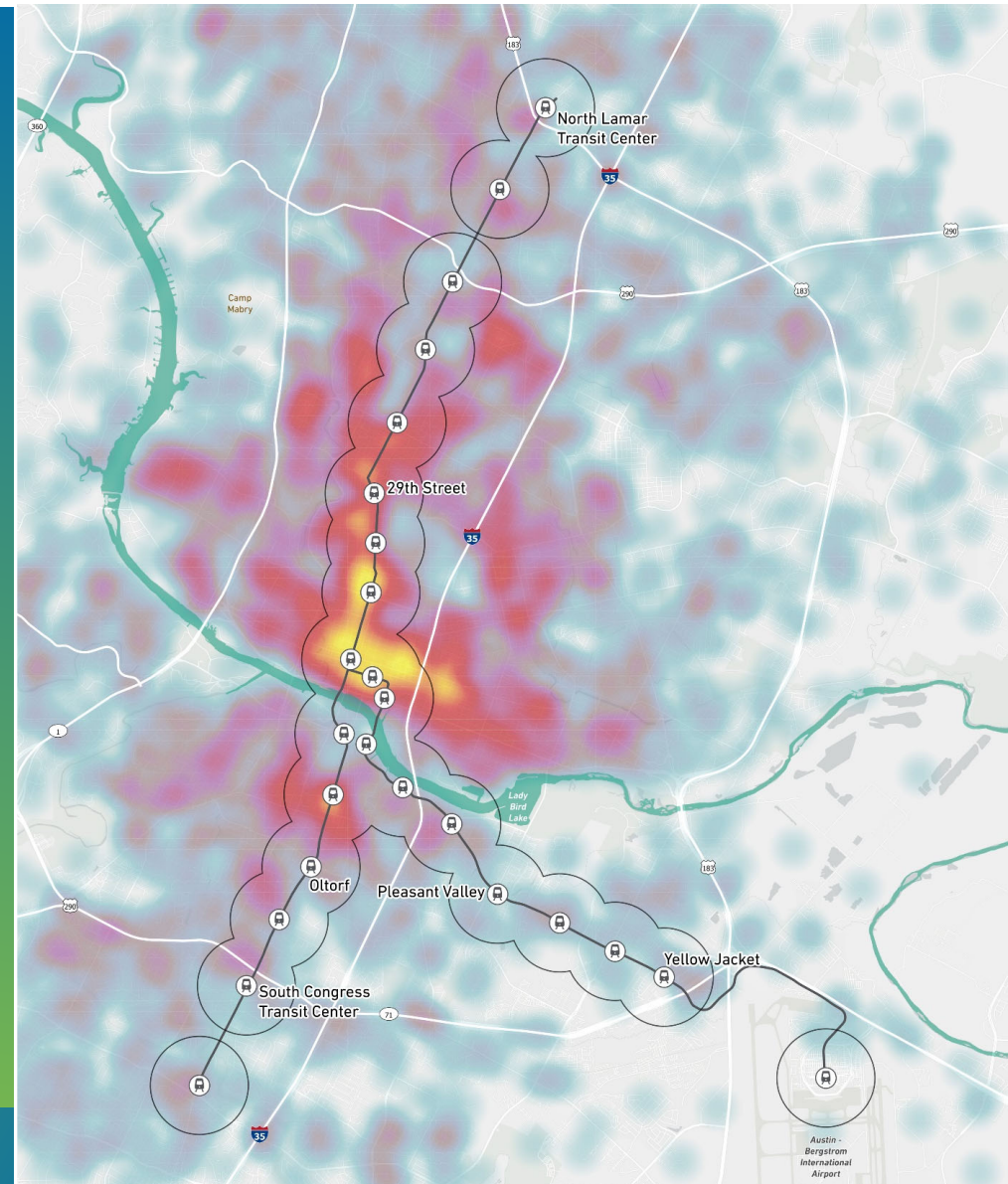
CURRENT EMPLOYMENT DENSITY

Longitudinal
Employer-Household
Dynamics (LEHD) 2019

LEGEND

- Station
- 0.5 mi radius from station
- Study Area

Employment
Sparse
Dense

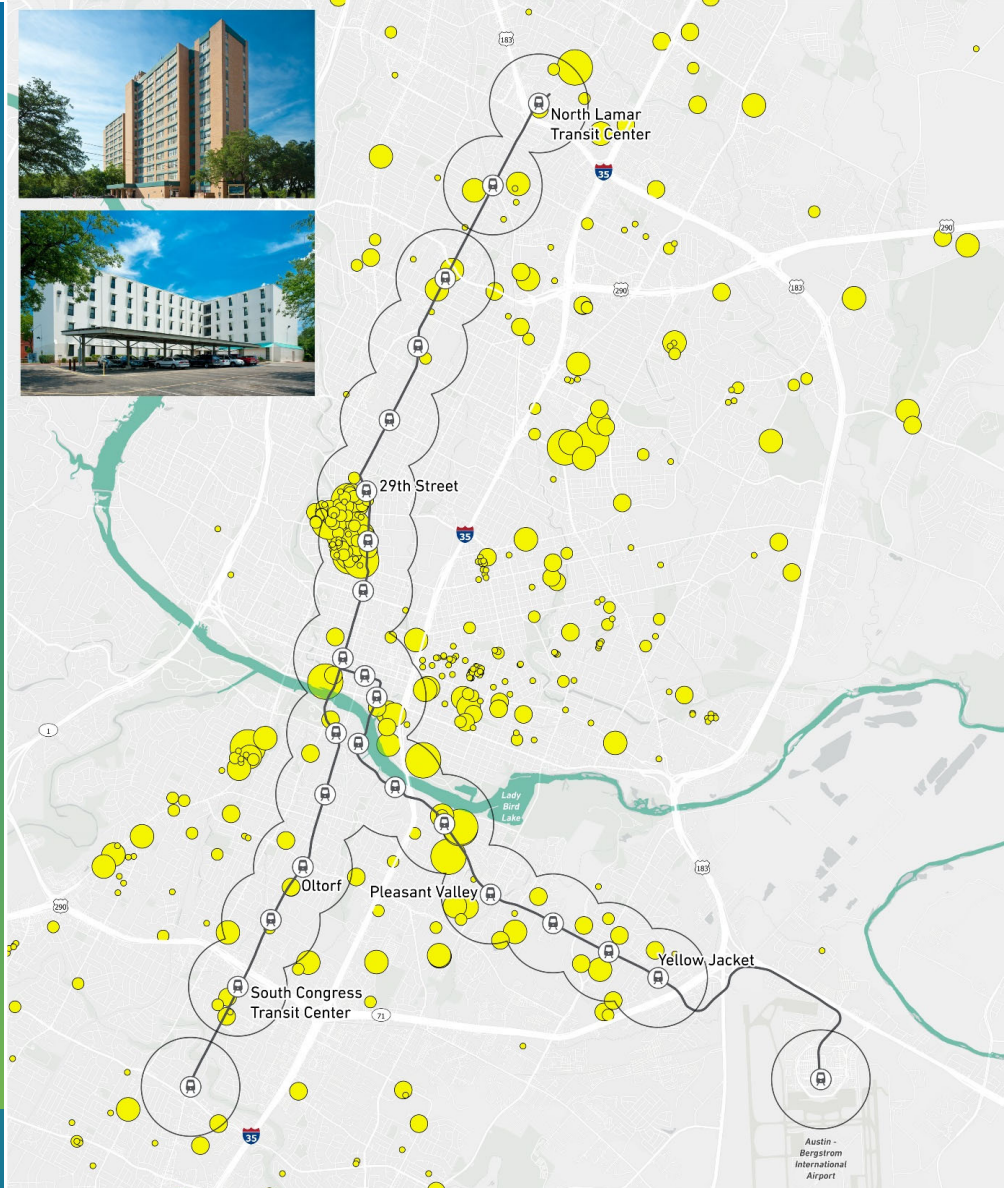


AFFORDABLE HOUSING

City of Austin Comprehensive Affordable Housing Directory

LEGEND





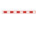


- Station
 - 0.5 mi radius from station
 - Study Area
- Affordable Housing Units
- 1 - 50
 - 51 - 150
 - 151 - 250
 - 251 - 400
 - 401 +





TRANSIT CONNECTIONS

CapMetro

LEGEND

-  Station
-  0.5 mi radius from station
-  Study Area
-  Park & Ride
- Transit Routes**
-  Red Line
-  Green Line (proposed)
-  MetroRapid

-  High Frequency MetroBus
-  Pickup Service Zone

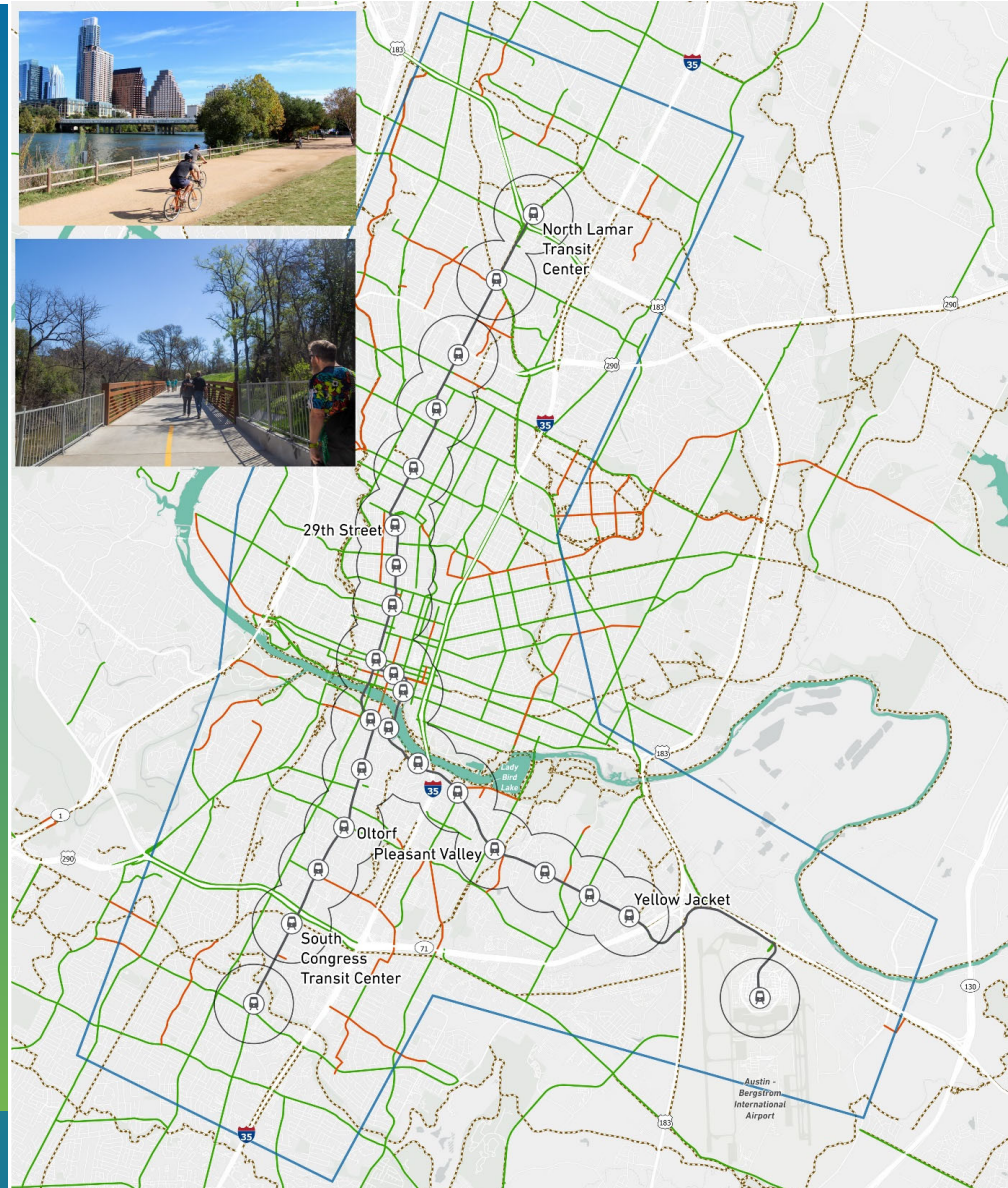


TRAILS AND BIKE PATHS

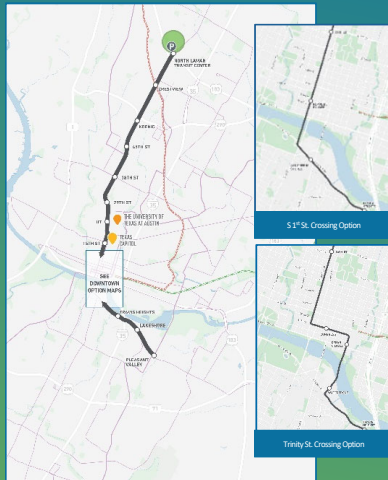
City of Austin Austin Strategic Mobility Plan (ASMP)

LEGEND

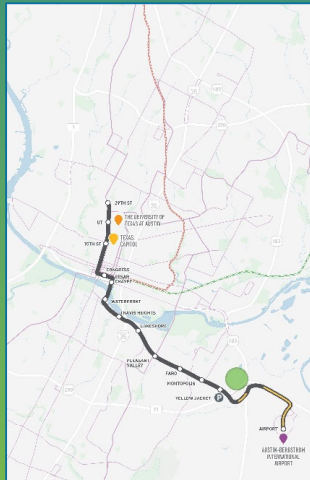
- Station
- 0.5 mi radius from station
- Study Area
- Station Bikeshed (approx 2 mi)
- Existing Bike Paths
- Future Bike Paths
- Trails



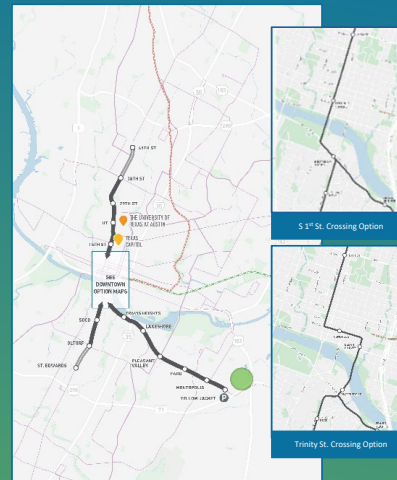
LIGHT RAIL CORE SYSTEM OPTIONS



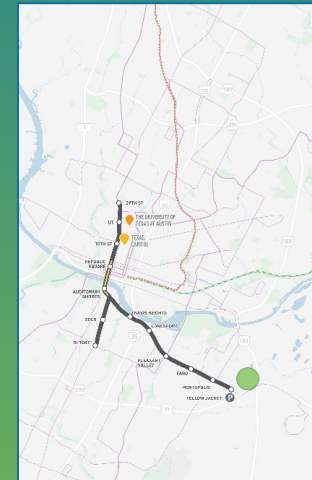
ON-STREET:
NORTH LAMAR TRANSIT CENTER
TO PLEASANT VALLEY



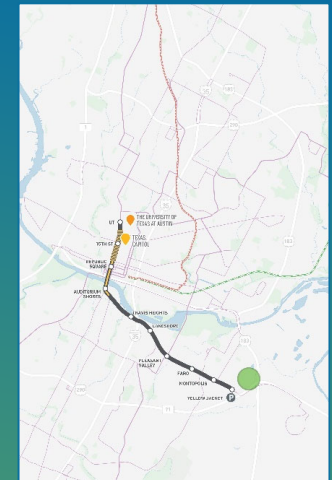
ON-STREET:
29TH TO THE AIRPORT



ON-STREET:
38TH TO OLTORF TO YELLOW JACKET



PARTIAL ELEVATED:
29TH TO OLTORF TO YELLOW JACKET

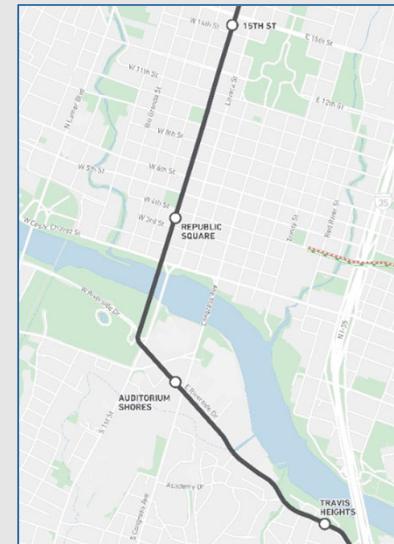
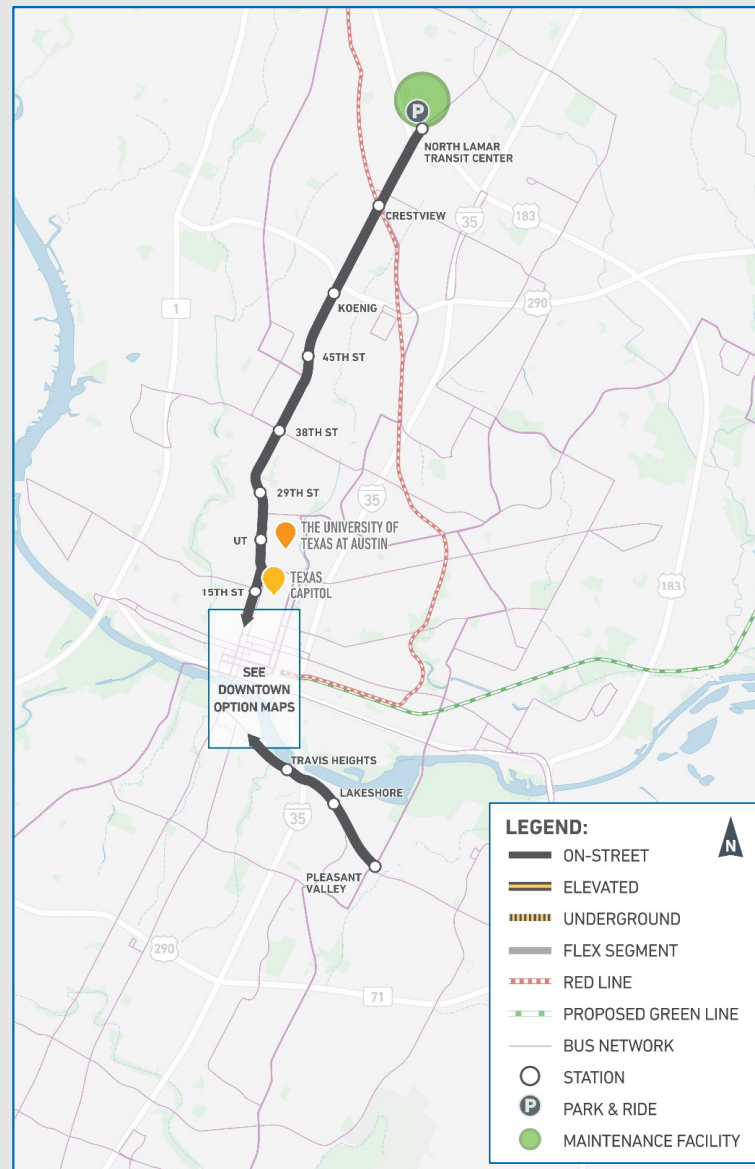


PARTIAL UNDERGROUND:
UT TO YELLOW JACKET

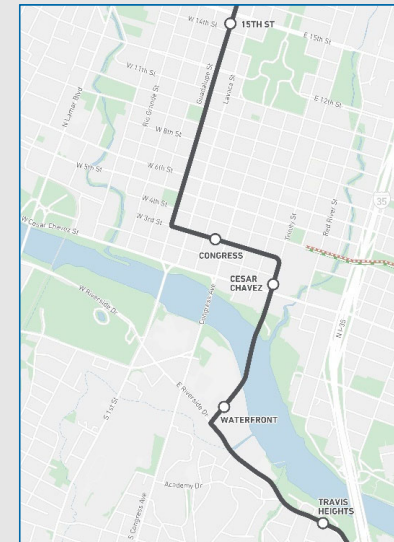
ON-STREET: N. LAMAR TRANSIT CENTER TO PLEASANT VALLEY

- On-street from North Lamar Transit Center to Pleasant Valley Rd. on E. Riverside Dr.
- Lady Bird Lake crossing options at Guadalupe/S. 1st St. OR Trinity St.

AVG. NUMBER OF DAILY RIDERS SERVED	38,600 - 39,300
MILES OF NEW LIGHT RAIL	9.6 - 9.8



Guadalupe/S. 1st St. Crossing Option



Trinity St. Crossing Option

ON-STREET: 29TH TO THE AIRPORT

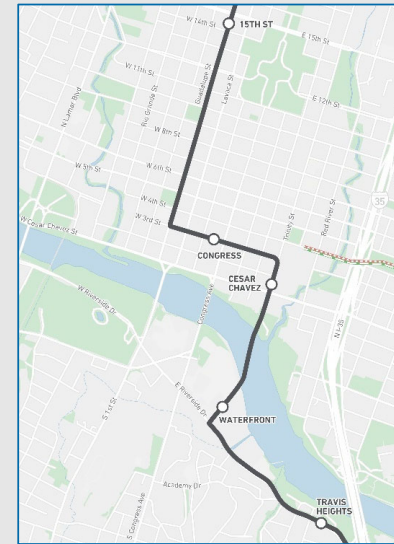
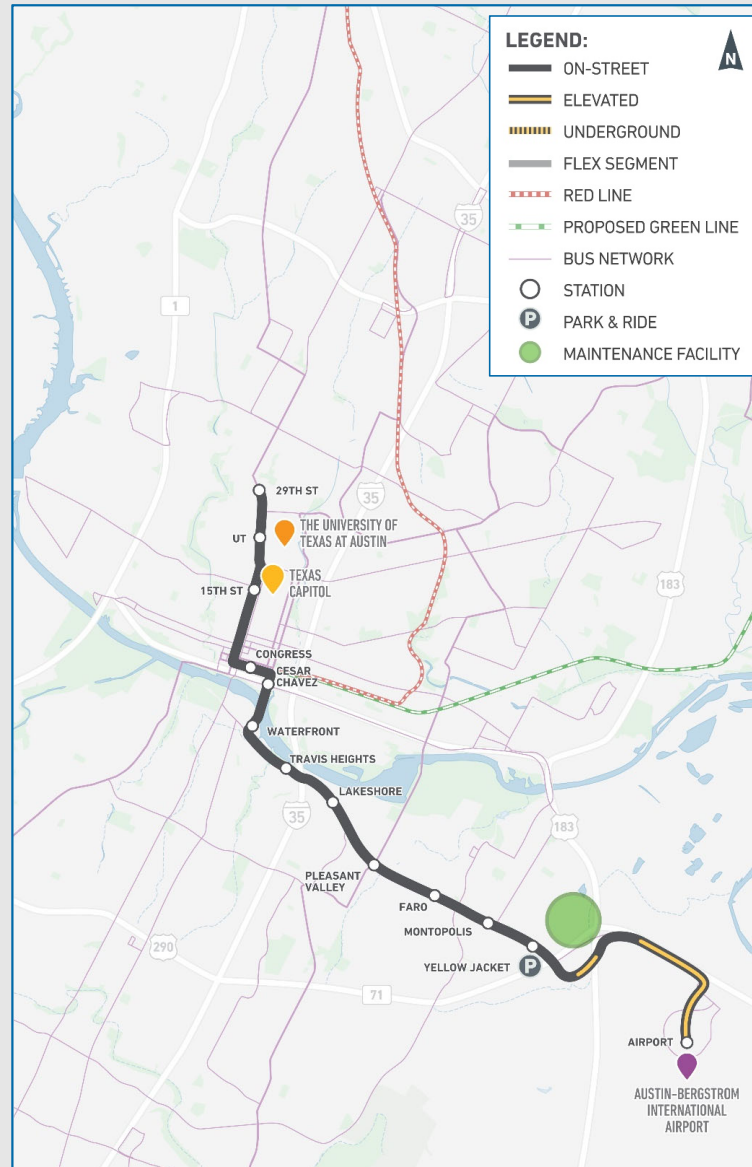
- On-street from 29th St. on Guadalupe St. to east of Yellow Jacket Ln. on E. Riverside Dr.
- Mainly elevated from SH 71 to Austin-Bergstrom International Airport
- Lady Bird Lake crossing on new bridge at Trinity St.

AVG. NUMBER OF DAILY
RIDERS SERVED

28,100

MILES OF NEW LIGHT RAIL

10.1



Trinity St. Crossing Option

ON-STREET: 38TH TO OLTORF TO YELLOW JACKET

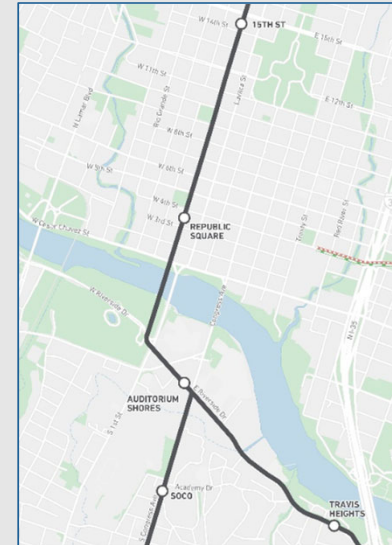
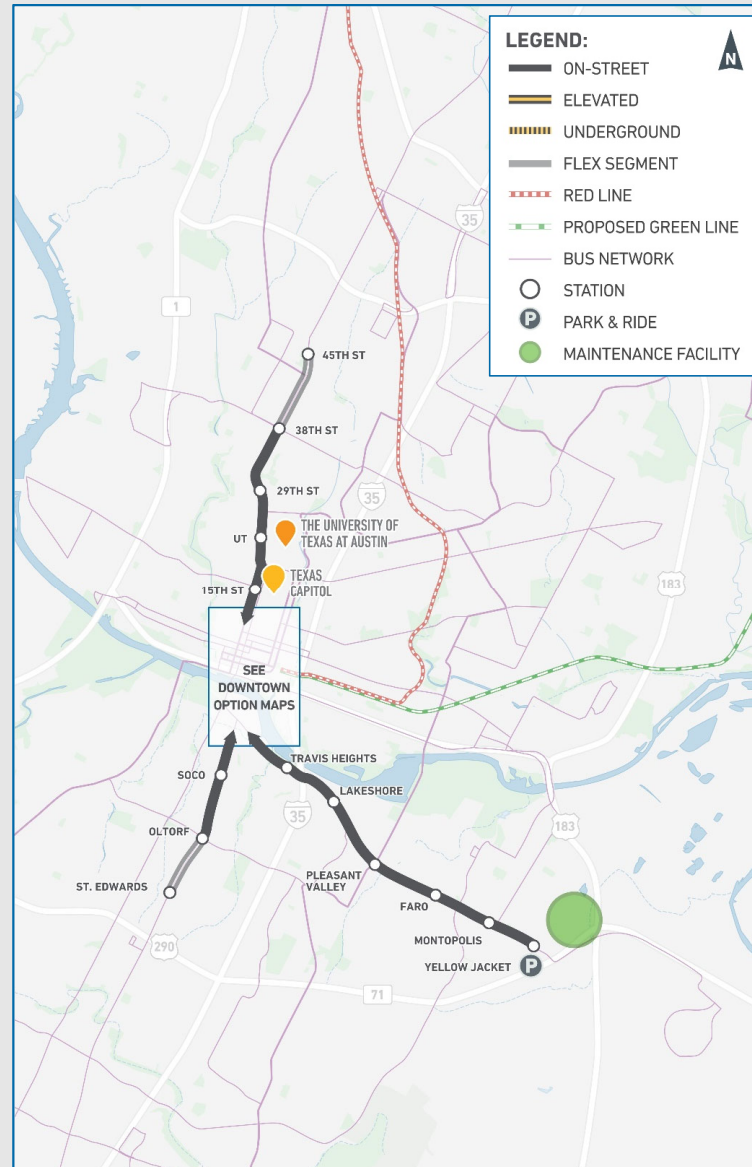
- On-street from 38th St. on Guadalupe St. to Oltorf St. on S. Congress Ave. and to Yellow Jacket Ln. on E. Riverside Dr.
- Potential to extend endpoints to 45th St. to the north or St. Edwards to the south
- Lady Bird Lake crossing options at Guadalupe/S.1st St. OR Trinity St.

AVG. NUMBER OF DAILY
RIDERS SERVED

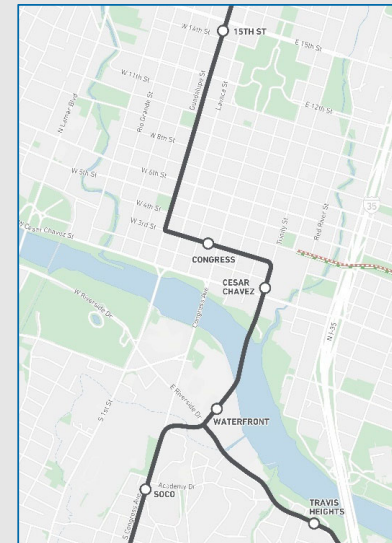
28,500 - 29,900

MILES OF NEW LIGHT RAIL

9.4 - 9.8



Guadalupe/S. 1st St. Crossing Option



Trinity St. Crossing Option

PARTIAL ELEVATED: 29TH TO OLTORF TO YELLOW JACKET

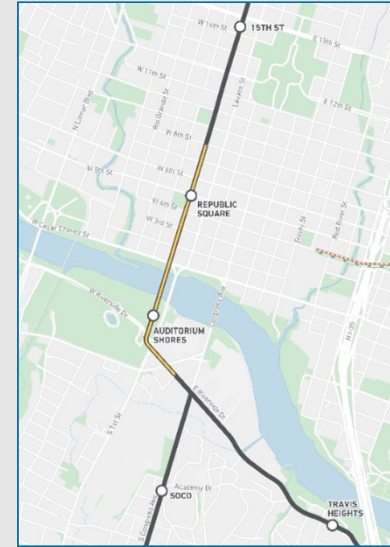
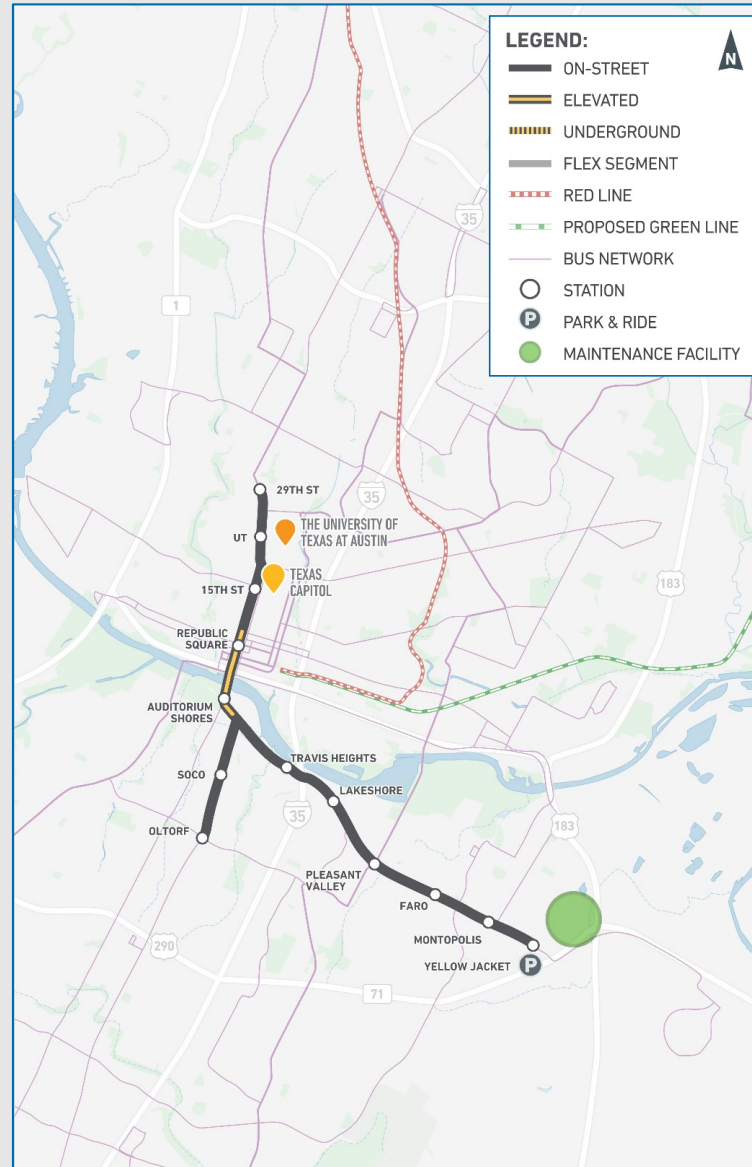
- On-street on Guadalupe from 29th St. to 8th St.
- Elevated from 8th St. on Guadalupe to east of Auditorium Shores with (2) elevated stations
- On-street on Riverside Dr. from east of Auditorium Shores to Yellow Jacket Ln. and on S. Congress Ave. from Riverside to Oltorf St.
- Lady Bird Lake crossing on new bridge at Guadalupe/S. 1st St.

AVG. NUMBER OF DAILY
RIDERS SERVED

26,900

MILES OF NEW LIGHT RAIL

8.7



Guadalupe/ S. 1st St. Crossing Option

PARTIAL UNDERGROUND: UT TO YELLOW JACKET

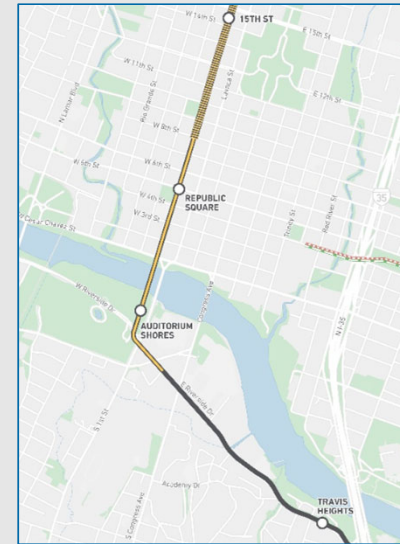
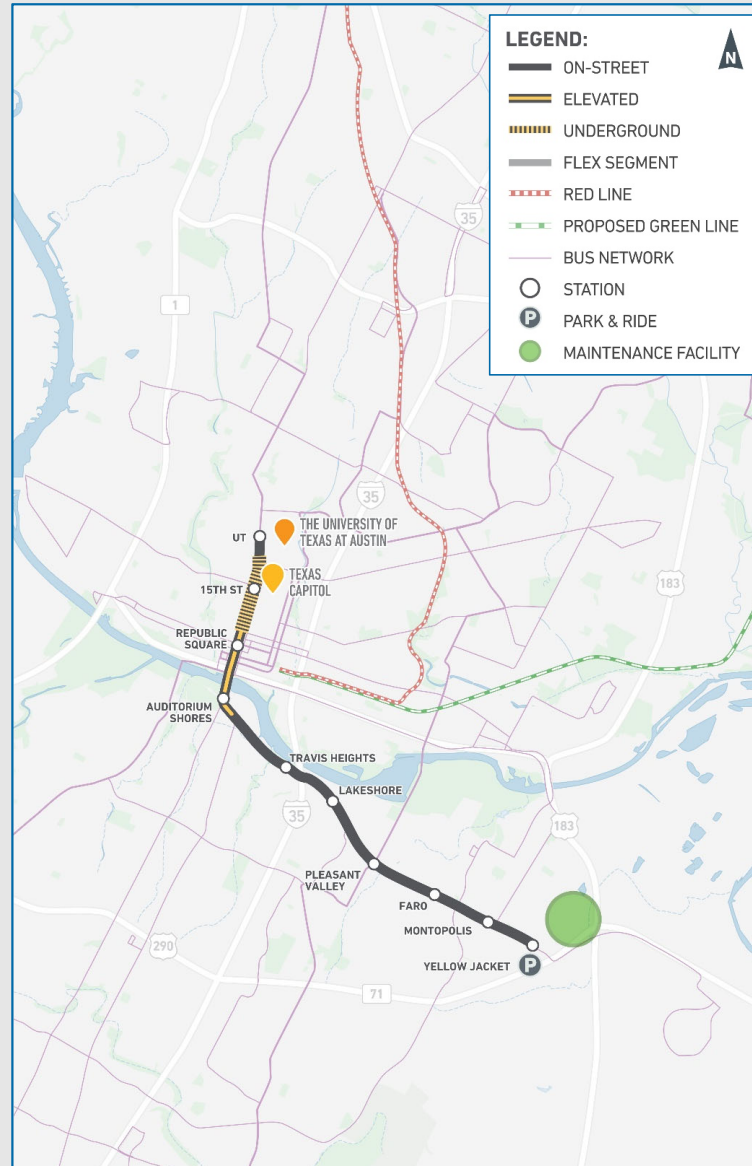
- Underground from 20th St. to 8th St. under Guadalupe with (1) underground station
- Elevated from 8th St. on Guadalupe St. to east of Auditorium Shores with (2) elevated stations
- On-street on Riverside Dr. from east of Auditorium Shores to Yellow Jacket Ln.
- Lady Bird Lake crossing on new bridge at Guadalupe/S. 1st St.

AVG. NUMBER OF DAILY
RIDERS SERVED

20,000

MILES OF NEW LIGHT RAIL

6.6



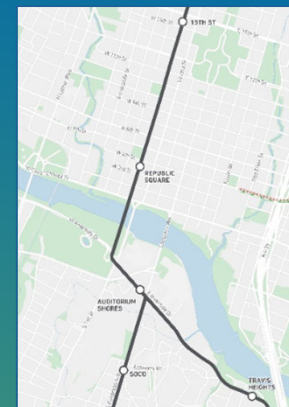
Guadalupe/S. 1st St. Crossing Option

ON-STREET DOWNTOWN

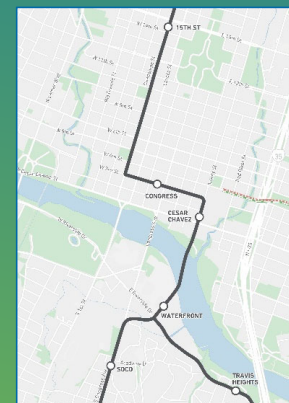
ARTIST REPRESENTATION



East 3rd Street and San Jacinto Boulevard - Looking West



S 1st St. Crossing Option



Trinity St. Crossing Option

ON-STREET DOWNTOWN

ARTIST REPRESENTATION



Guadalupe Street at 4th Street / Republic Square - Looking Northwest

PRECEDENTS



Sydney



Jerusalem



Paris



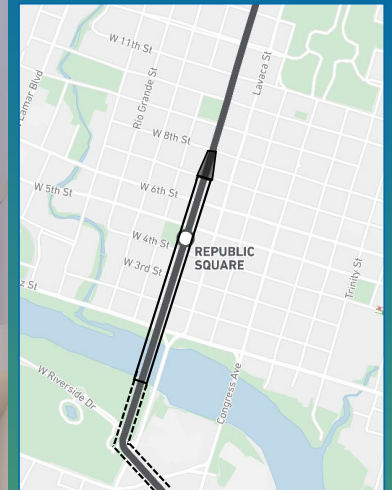
Portland

PARTIAL ELEVATED DOWNTOWN

ARTIST REPRESENTATION



Guadalupe Street at 4th Street / Republic Square - Looking Northwest



EXTENTS OF ELEVATED STRUCTURE: (PARTIAL ELEVATED OPTION)

- Transition Zone: 8th St. to 7th St.
- Elevated Structure: 7th St. to Lady Bird Lake
- Elevated Structure possible extension south to Riverside/Barton Springs Road

PARTIAL ELEVATED DOWNTOWN

ARTIST REPRESENTATION



Guadalupe Street and West 5th Street - Looking South

PRECEDENTS



British Columbia, Canada



The Hague, Netherlands



The Hague, Netherlands

PARTIAL ELEVATED DOWNTOWN

ARTIST REPRESENTATION

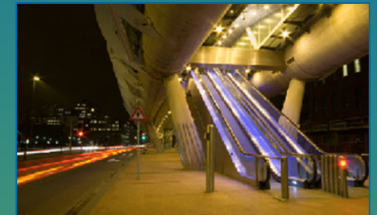


Guadalupe Street and West 4th Street - Looking South

PRECEDENTS



British Columbia, Canada



The Hague, Netherlands



The Hague, Netherlands

PARTIAL ELEVATED SOUTH OF THE RIVER

ARTIST REPRESENTATIONS



Aerial View South of River - Looking North



Station View at Auditorium Shores



Transition from elevated to on-street at West Riverside Drive

SHARE YOUR FEEDBACK



SCAN THE QR
CODE TO
LEARN MORE



Visit our Virtual Open House
ProjectConnect.com/Get-Involved



Email Us
input@atptx.org



Mail in Your Comments and Questions
203 Colorado St., Austin, TX 78701



Call Us
(512) 389-7590



**AUSTIN
TRANSIT
PARTNERSHIP**

THANK YOU!