

Proposed Alterations 2907 Glenview Avenue

The proposed alterations are documented on the drawings by Paul DeGroot, Architect dated April 3, 2023. Supplemental to the drawings is the following information about the desired alterations, which fall into three basic categories:

1. Replacing windows.

The home has original wooden double-hung windows that need replacing as they are drafty and quite energy-inefficient. Most of these windows do not open any more. The owners would like to replace them with modern energy-efficient windows.

2. Moving the front door.

The front door is located in the middle of the front porch and is only 32" wide. As such it does not meet the IRC building code for a required egress door of 36" or wider (the back door to the home is also 32" wide). Furthermore, there are two concrete steps immediately in front of the front door. This also does not meet the building code for safety reasons. The owners would like to install a new 36"-wide front door on the right side of the front porch, with a code-compliant concrete landing directly outside the door and with one concrete step between this landing and the concrete porch slab.

3. Adding a porch railing.

The owners would like to add a painted wood railing on 2 sides of the front porch to give it some visual interest.

Photo A – Front of the house:

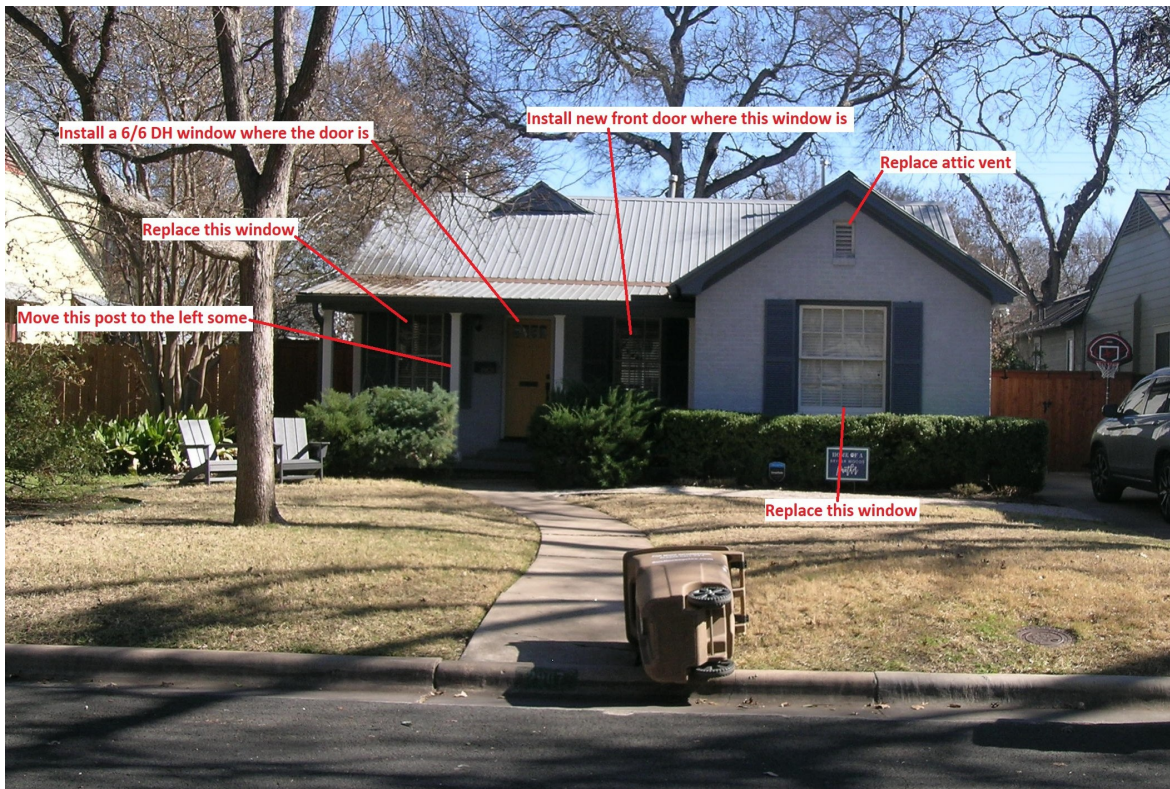


Photo B – Front door and steps



Photo C – Front Porch



Photo D – NW corner of front porch



Photo E – North wall of living room & kitchen



Photo F – SW corner of house, at the front bedroom

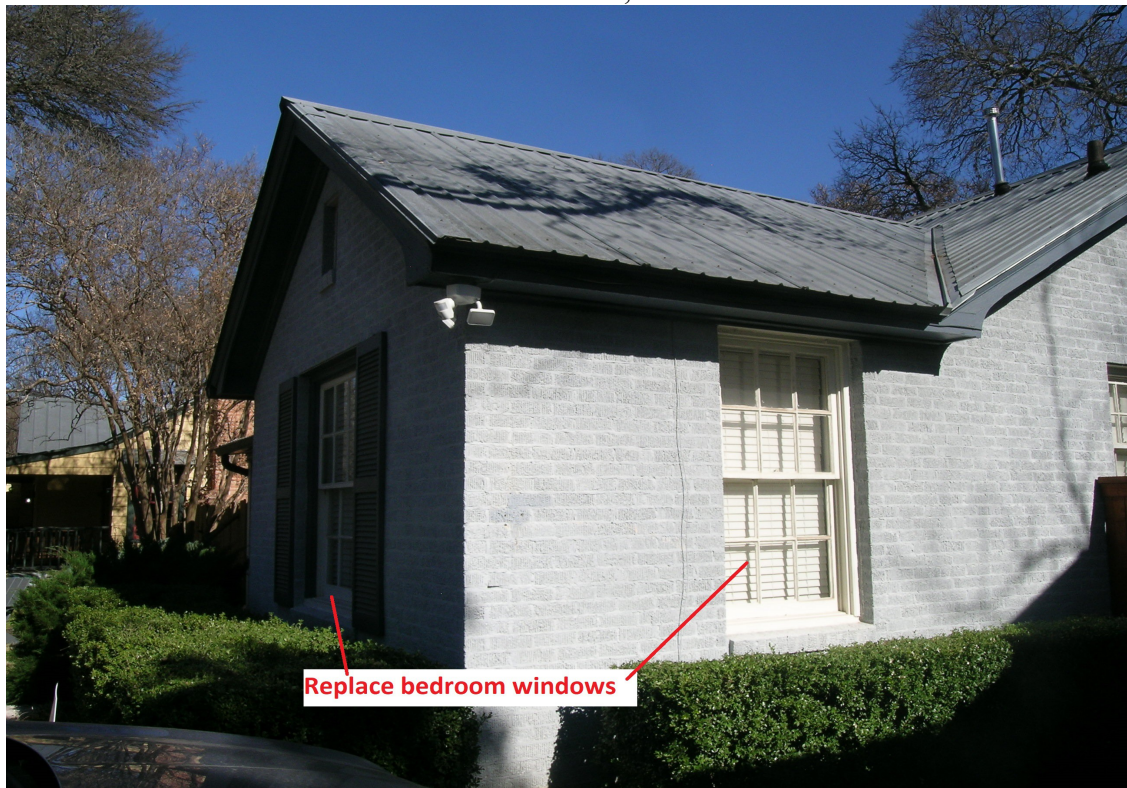


Photo G – South wall of house



Photo H – Style of new front door



Photo I – Painted wood railing, similar to what is shown on the drawings



Photo J – Example of replacement wood window by Marvin which fits inside the existing brick openings in the wall



FEATURES OF THE ULTIMATE DOUBLE HUNG INSERT G2 WINDOW

- Available in heights up to 8 feet or widths up to 4.5 feet
- Marvin's exclusive auto-lock activates when sashes are closed for convenient security
- Unique wash mode allows cleaning of both sides of glass from indoors
- Narrow checkrail maximizes view, while maintaining historical accuracy
- Available with the same features in a single hung style, with optional Lift Lock
- Additional configurations include stationary transom or picture window
- Hidden Lock Status Sensor option connects with your smart home to indicate when windows are closed and locked
- Available with IZ3 coastal/hurricane certification

Photo K – View of simulated divided lights by Marvin

Simulated Divided Lite with Spacer Bar (SDLS)



Paired with SDL bars on the exterior of the glass, a spacer bar is installed between the glass, creating an even closer match to the Authentic Divided Lite look.