

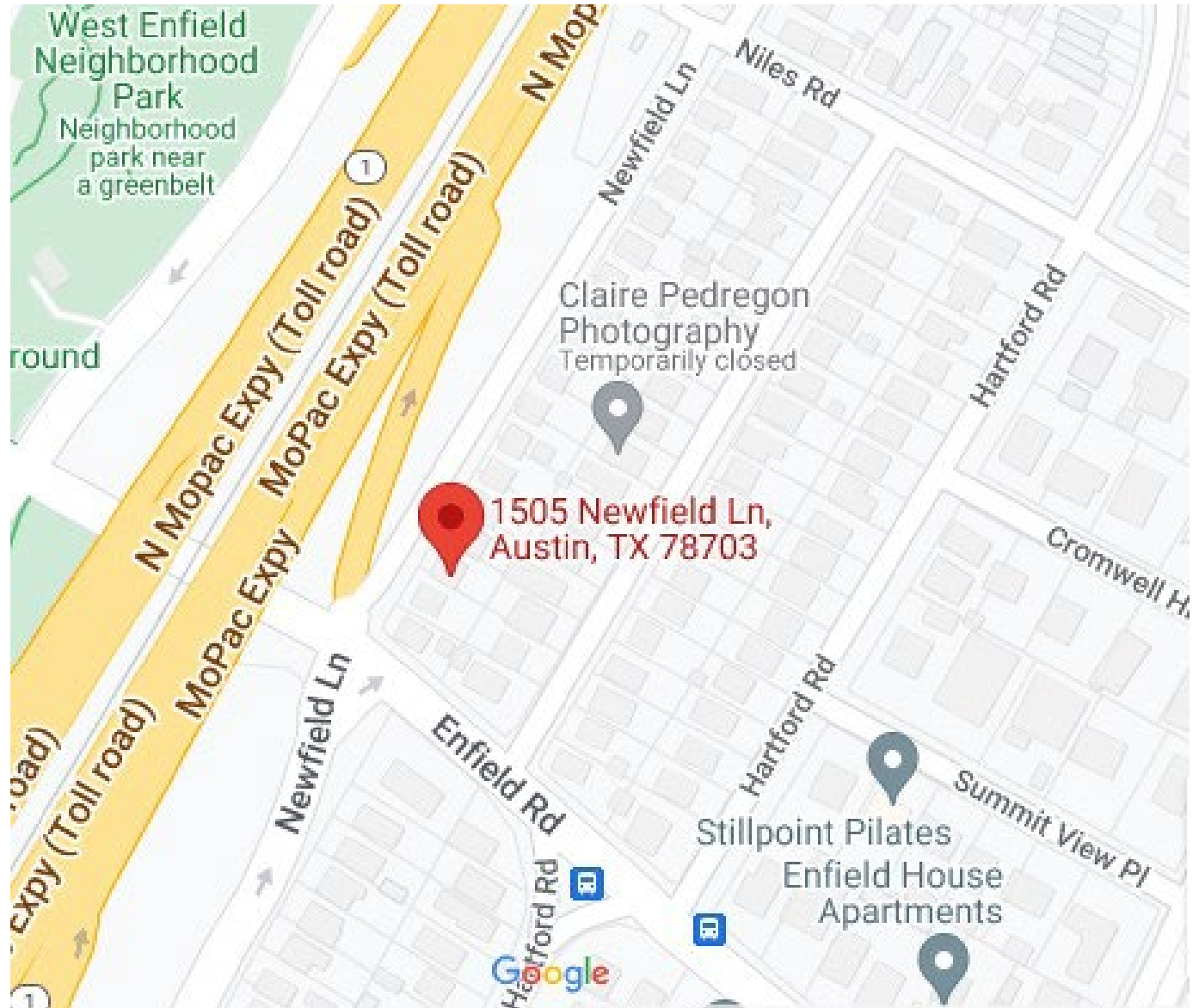
1505 Newfield Lane

Historic Landmark Commission Presentation

May 3rd, 2023

Table of Contents

- Demolition of existing SFR
 - Pictures of current state
 - Compliance to Historic Standards
- New Construction of SFR
 - Pictures of proposed state
 - Compliance to Historic Standards
- Similar New Builds
 - Photos



Demolition



Front

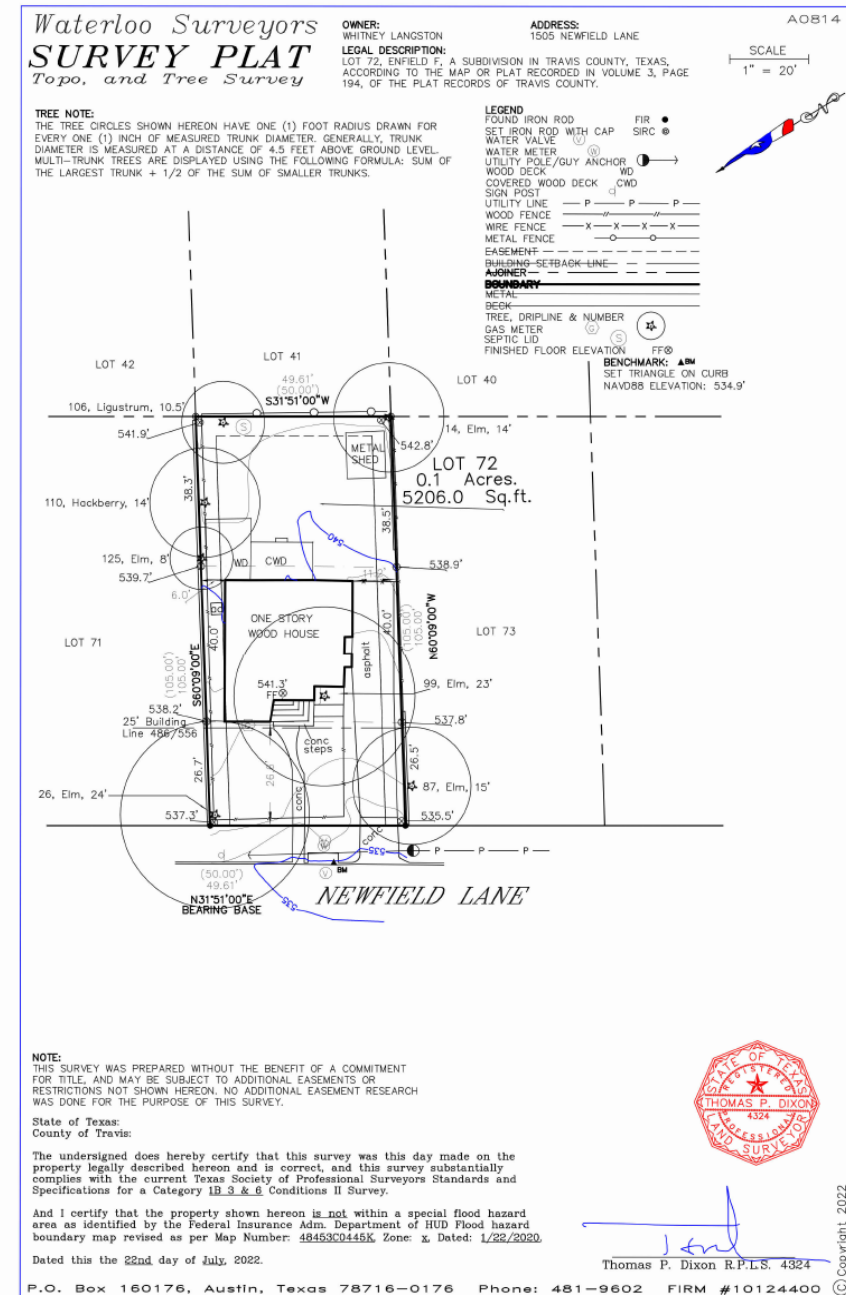


Back



- If demolition is approved, work with the Historic Preservation Office and other interested parties to salvage usable architectural materials and features

Possibility to re-use the existing front door.

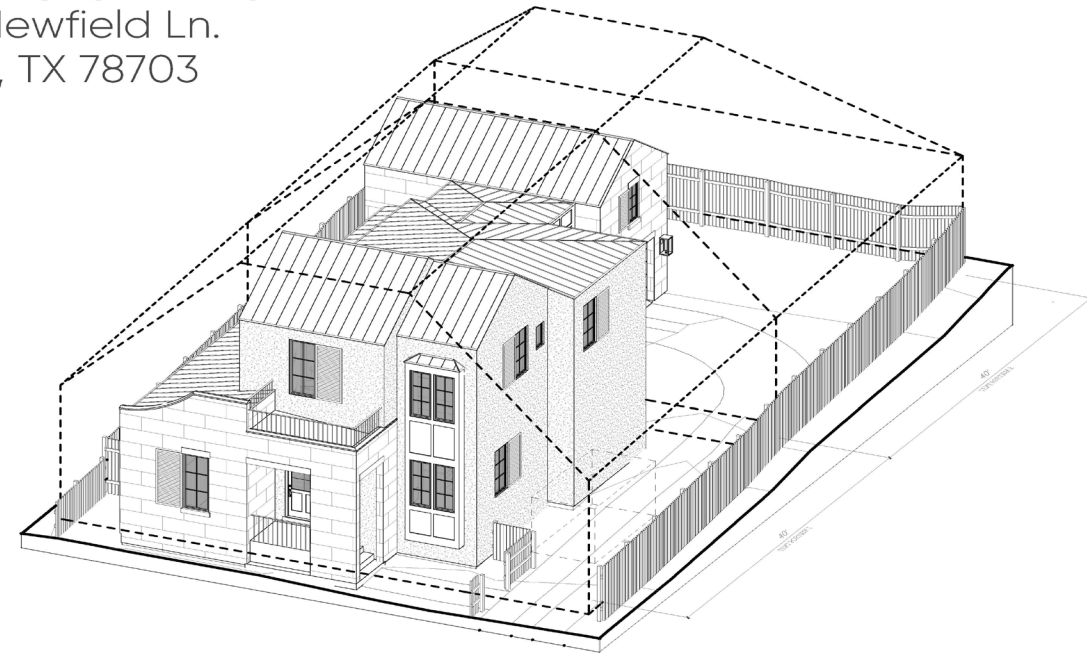


New Construction



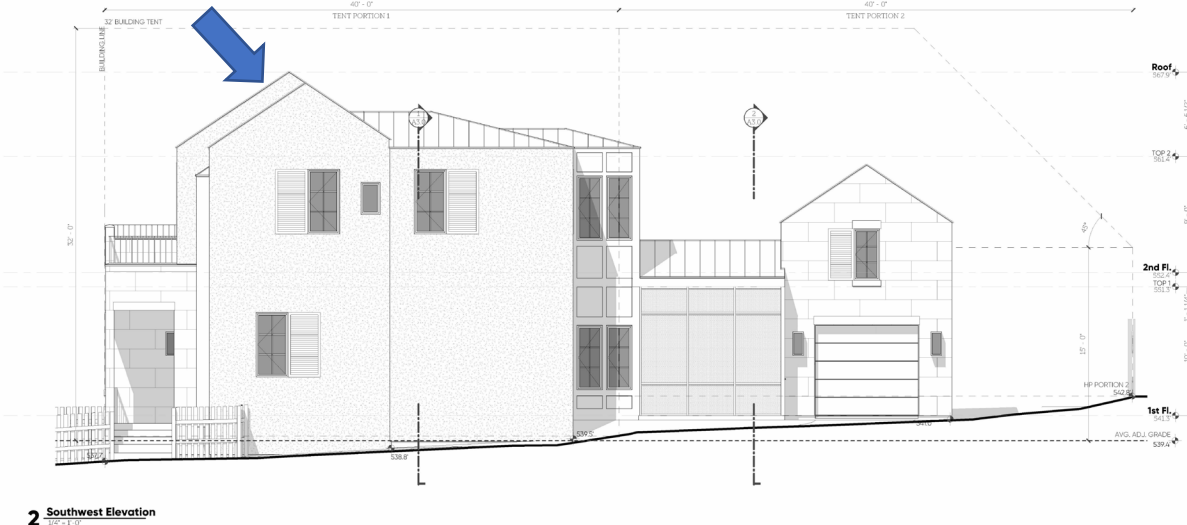
Newfield Villa

1505 Newfield Ln.
Austin, TX 78703



New Construction: Compliance with Historic Standards

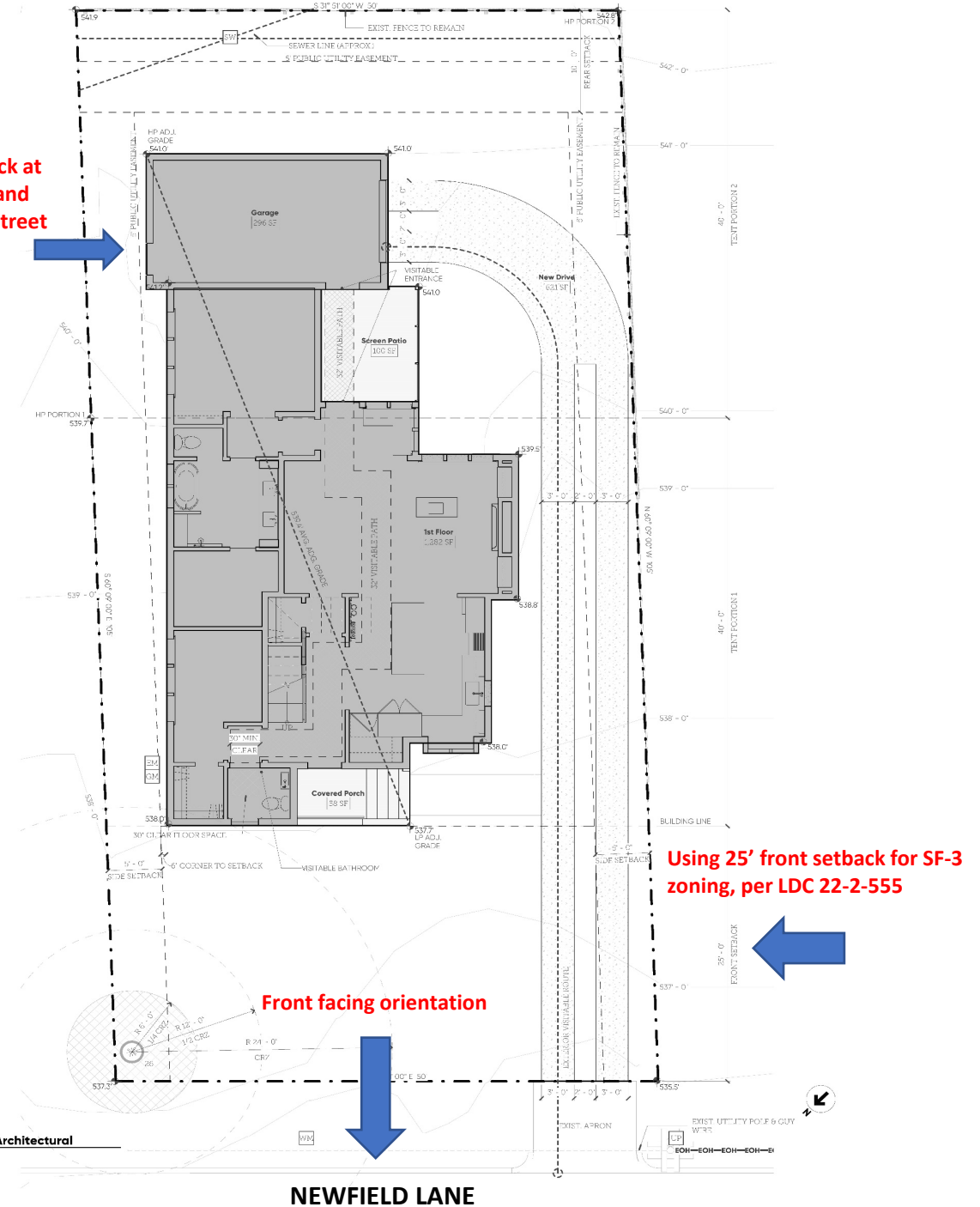
2 STORY – 27' SFR



2 Southwest Elevation
- 3/16" = 1'-0"

Front mass matches existing width and steps in towards the rear 2/3 of the building in order to reduce visibility and perceived size.

Garage set far back at 90-degree angle and not visible from street view.



1 Site Plan - Architectural
- 3/16" = 1'-0"

Using 25' front setback for SF-3 zoning, per LDC 22-2-555



New Construction: Compliance Continued

Modern design with corresponding
modern detail



4 Back Corner (East) View
SEE BUILDING ELEVATION 2/A2.0
3/A2.1

Peaked roof



2 Front Corner (West) View
SEE BUILDING ELEVATION 2/A2.0
3/A2.1

Limestone and Stucco exterior



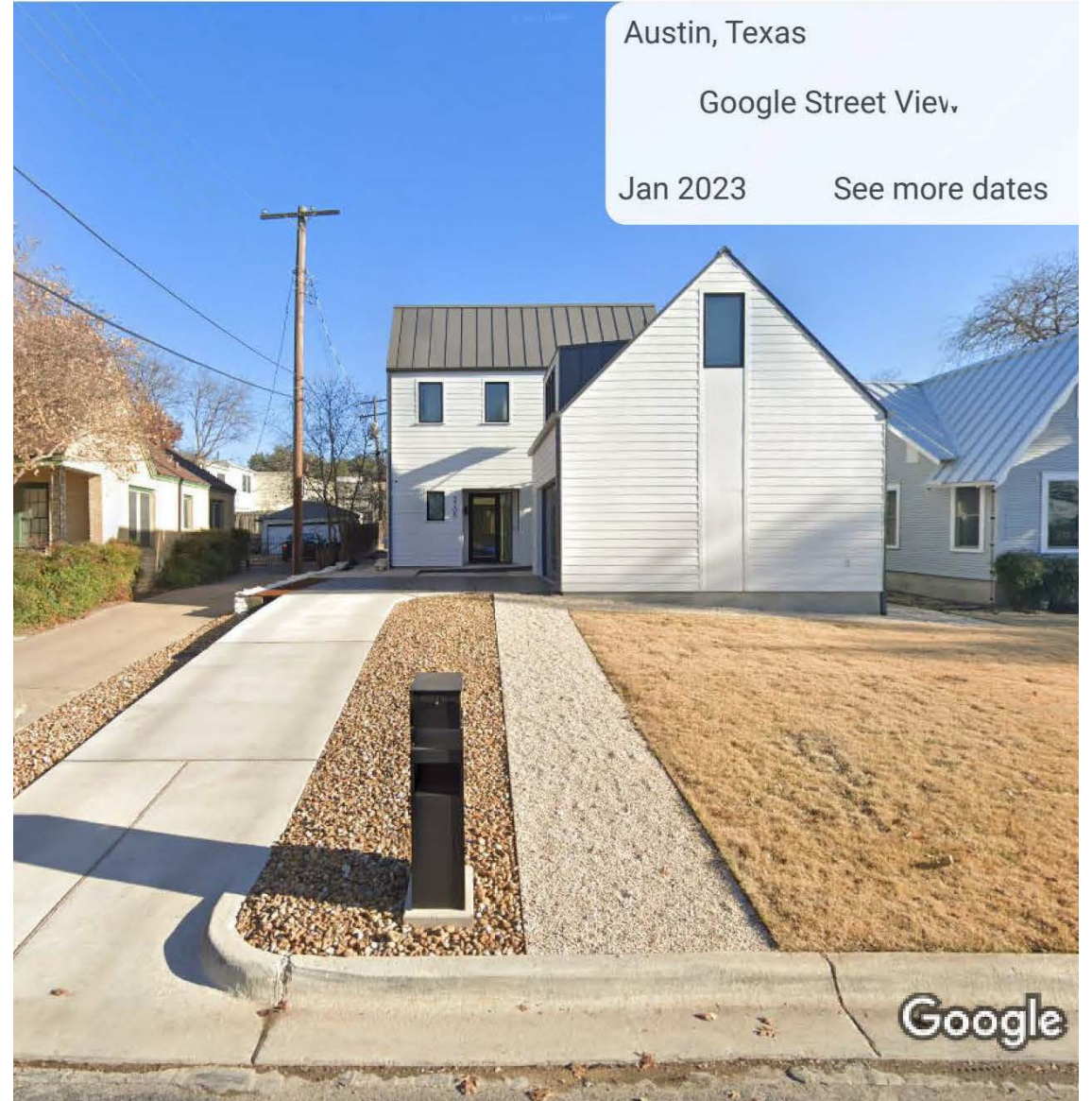
3 Back Corner (South) View
SEE BUILDING ELEVATION 1/A2.0
3/A2.1

Street facing entrance, windows, and porch
that are similar in scale & proportions to the
rest of the block

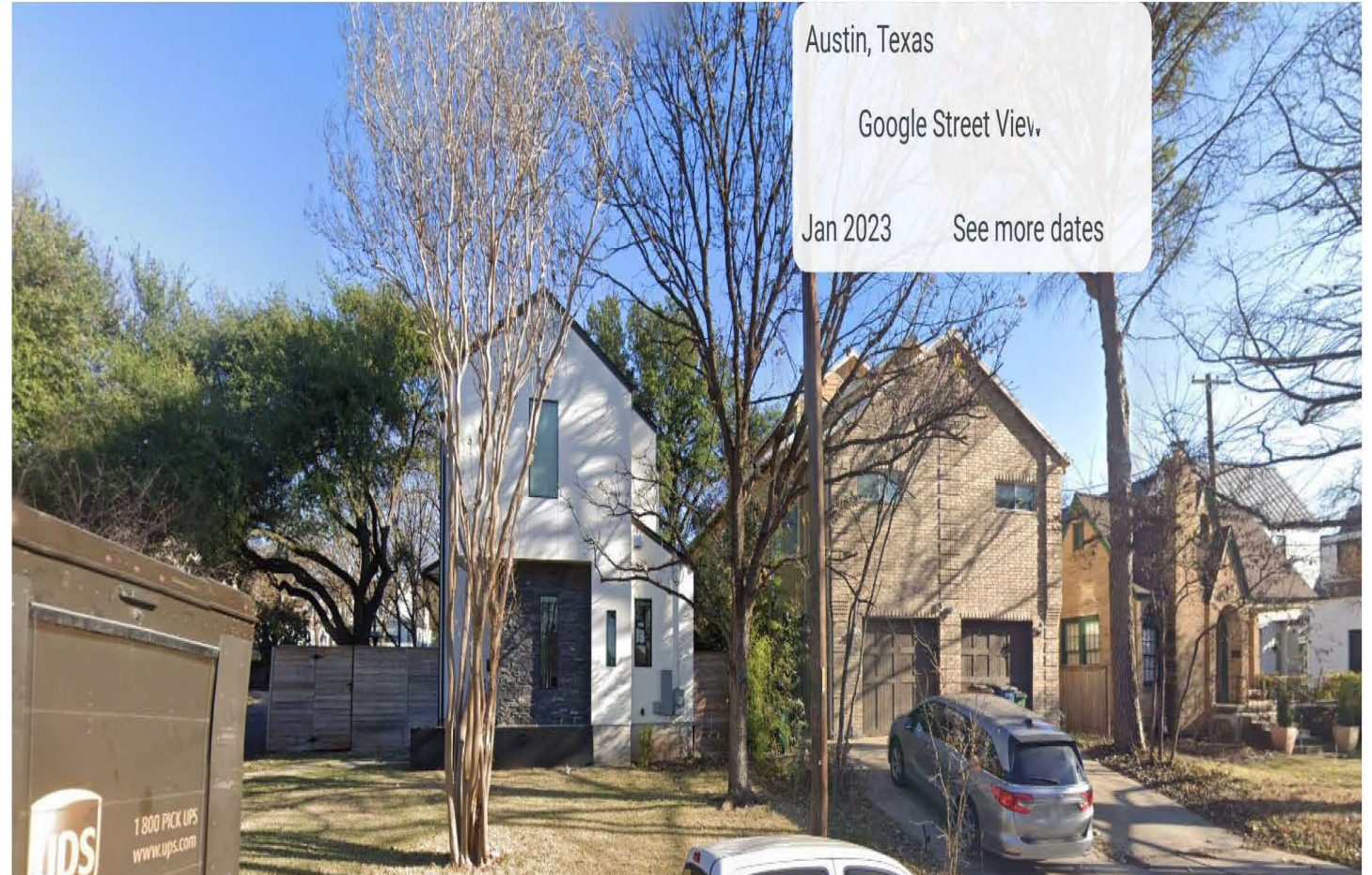


1 Front (Northwest) View
SEE BUILDING ELEVATION 1/A2.0
3/A2.1

2105 Newfield Lane



2109 & 2110 Newfield Lane



1808 Niles Road

