

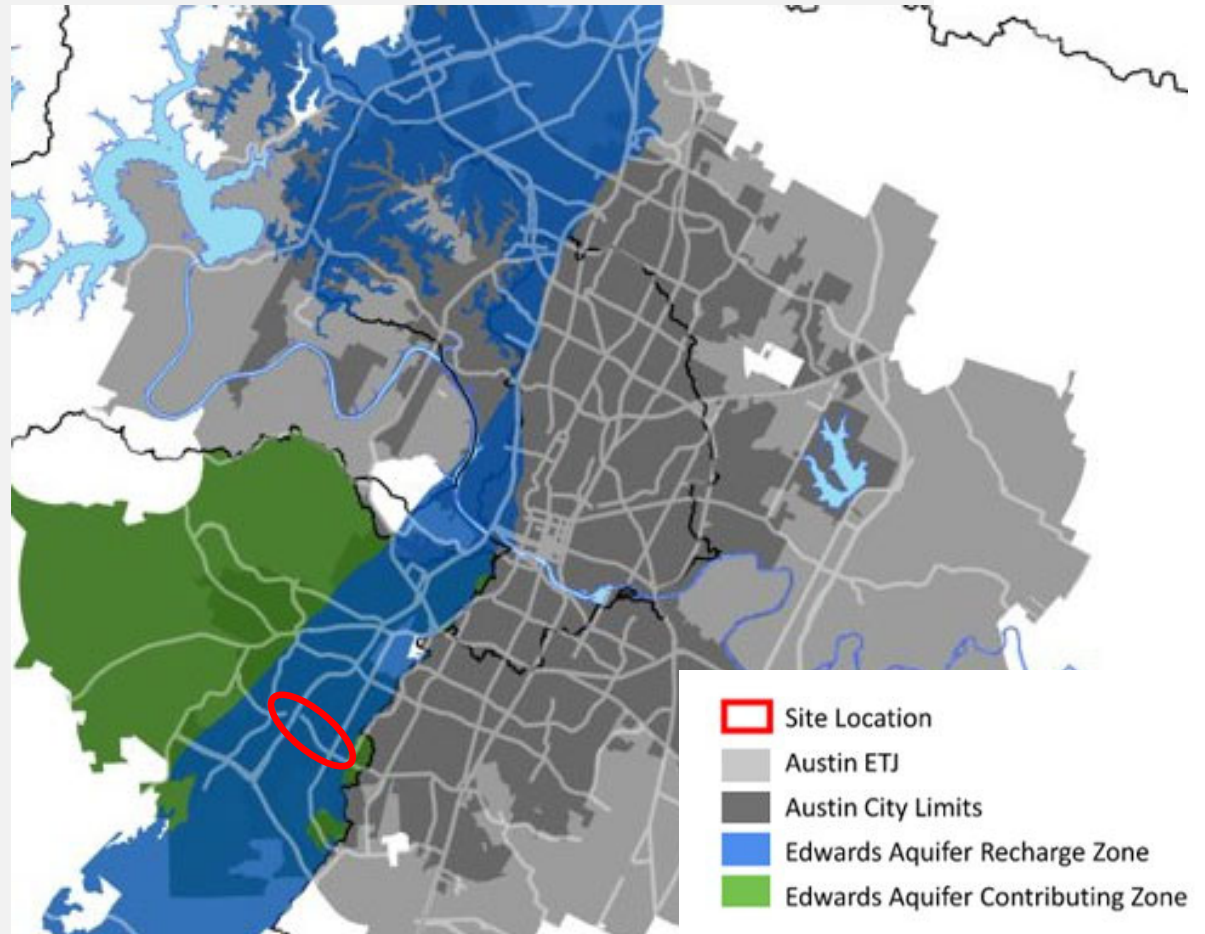


CORRIDOR
PROGRAM
OFFICE



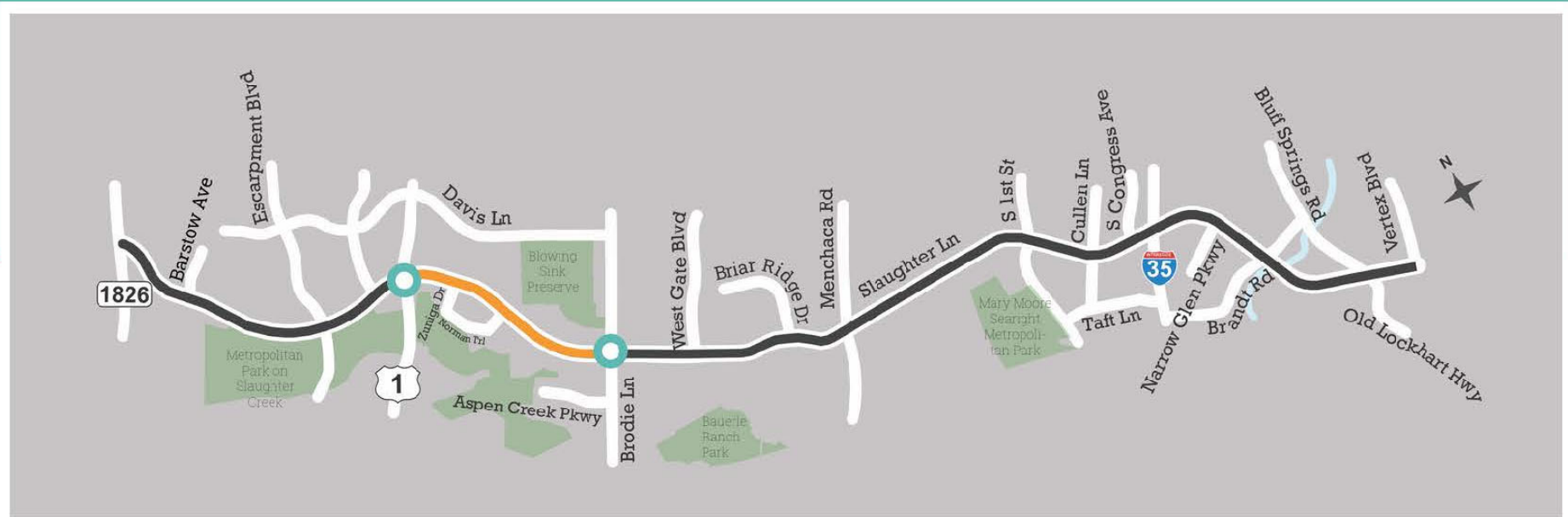
Presenter: Randy Harvey

PROJECT OVERVIEW



PROJECT OVERVIEW

DESIGN UNDERWAY SLAUGHTER LANE CORRIDOR



The Corridor Program Office is finalizing designs for multimodal safety and mobility improvements to Slaughter Lane between Loop 1 (Mopac) and Brodie Lane.

SLAUGHTER LANE IMPROVEMENTS

The Slaughter Lane project between Loop 1 (MoPac) to east of Brodie Lane is anticipated to implement \$16 million in critical mobility, safety, and connectivity improvements including:

- Adding extra lanes for better vehicular travel time – **reducing travel time by 27% in peak hour**
- 8-ft Shared Use Path (SUP) for SAFE community connectivity through out the corridor for cyclist and pedestrians.
- Increased safety for users of the SUP by creating a vegetated buffer between SUP and vehicles
- New signals (Norman Trail & PHB at Zuniga Dr) and improving existing signals
- ADA-compliant curb ramps at each intersection w/ high visibility crosswalks











CORRIDOR
PROGRAM

THANK YOU

