

ATX Walk Bike Roll & Austin Strategic Mobility Plan Amendments

Planning Commission Recommendation May 30, 2023



atx
Walk Bike Roll
Urban Trails | Sidewalks | Bikeways Plans



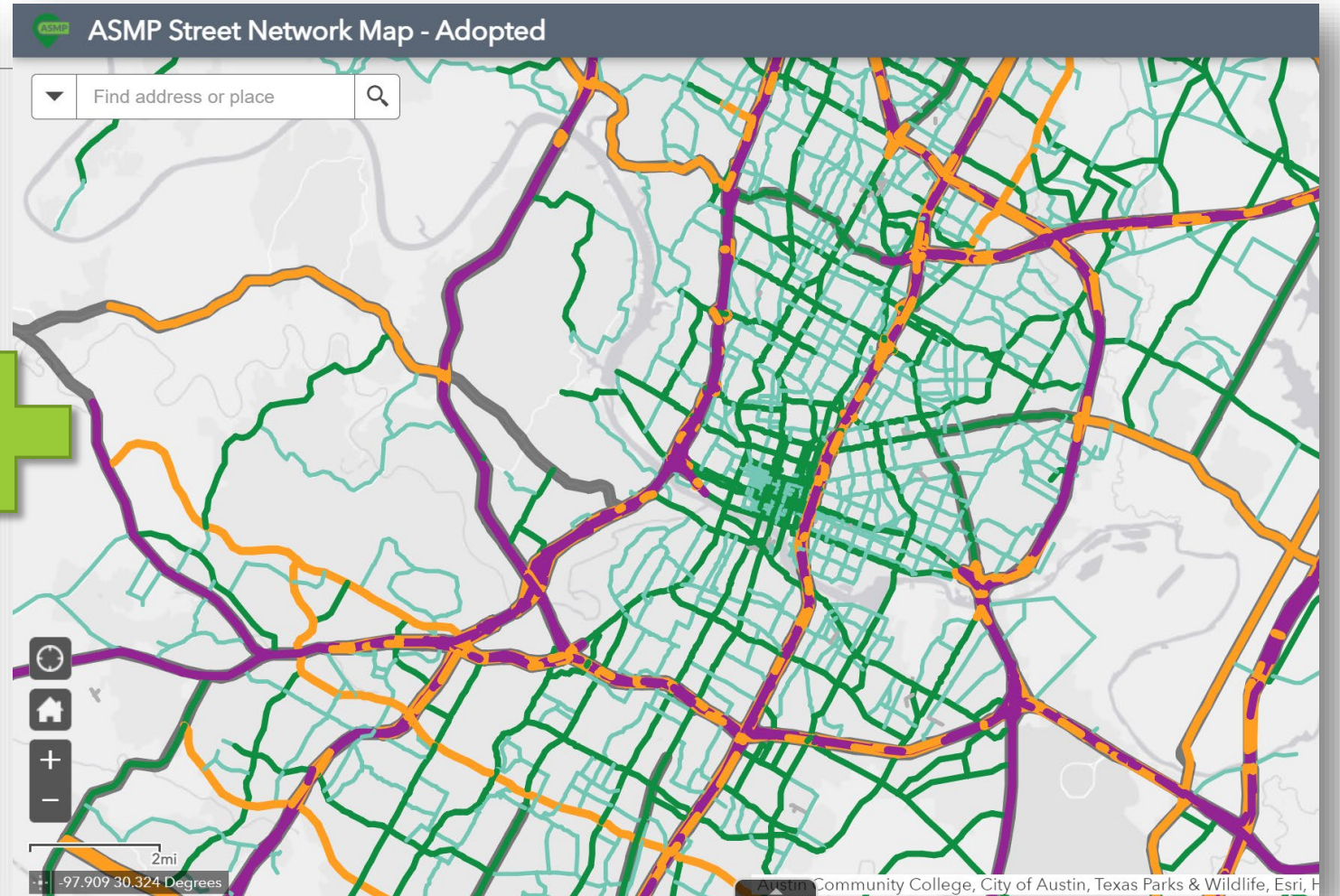
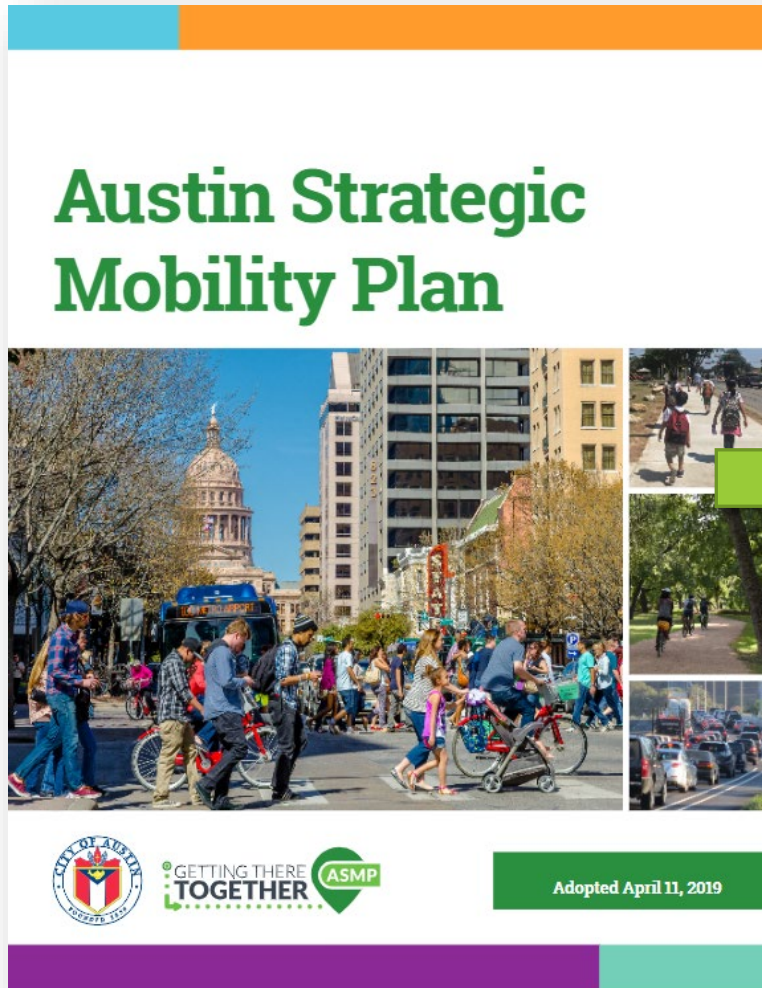
Presentation Outline

- Brief Transportation Planning History
- Austin Strategic Mobility Plan (ASMP) Overview
- ATX Walk Bike Roll (ATXWBR): Summary of Plans
- Next Steps

Transportation Planning History

- Austin Strategic Mobility Plan (ASMP) was adopted in 2019 as the Transportation Element of the Imagine Austin Comprehensive Plan
 - Austin Strategic Mobility Plan Adoption – [Ordinance No. 20190411-033](#)
- Council initiated an amendment in 2021, adopted in June 2022
 - 2022 Amendment – [Ordinance No. 20220609-052](#)
- ATX Walk Bike Roll (ATXWBR) was initiated in 2021 to update the Bikeways, Sidewalk, and Urban Trails Plans and amend the associated elements in the ASMP.
 - 2014 Austin Bicycle Plan – [Ordinance No. 20141106-118](#)
 - 2014 Austin Urban Trails Plan – [Ordinance No. 20140925-143](#)
 - 2016 Austin Sidewalk and ADA Transition Plan – [Ordinance No. 20160616-072](#)

Austin Strategic Mobility Plan (ASMP)



ASMP | Policy Document

Austin Strategic Mobility Plan



Adopted April 11, 2019

- A comprehensive multimodal transportation plan for the future of our transportation network
- **50 / 50 mode share goal**
- Includes:
 - Indicators + Targets
 - Policies
 - Action Items



ASMP | Street Network

- A database of streets organized by Street Name with **existing and future conditions of the right of way**
- These future conditions reflect the policies and transportation vision in the ASMP and **reflect our modal plans for walking, bicycling, transit and driving**
- Includes **right of way dedication requirements** needed to accommodate future roadway conditions (referred to as Dedication of Right of Way in the Land Development Code)

**Adopted Street Network Table can be found at atd.knack.com/asmp#home/*

Centering ATXWBR in Equity

Defining Equity: Equity is achieved when race no longer predicts a person's quality of life outcomes in our community.

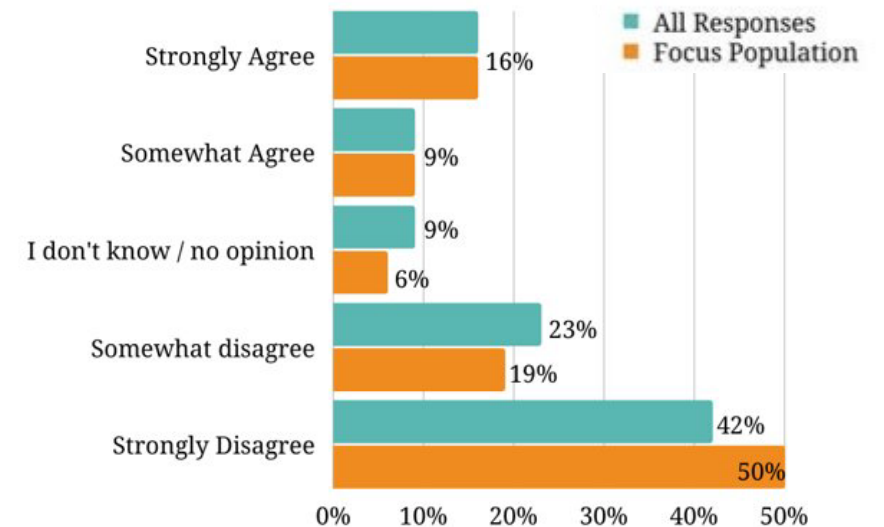
Equity Scan and Framework: A guiding document built off of interviews of local leaders from historically underrepresented groups to ensure equity is centered in all stages of the planning process.

Community Ambassadors: Hired to consult the project team and conduct outreach in their communities.

Equity Analysis Zones: Focus areas in Austin that have higher concentrations of historically marginalized populations and more barriers to achieving equitable outcomes.



“In Austin, people of all races share equal access to safe and comfortable places to walk, bike, or roll”



Focus populations are respondents who either:

- Reported an annual income below \$50,000, or
- Reported a race /ethnicity other than non-Hispanic White

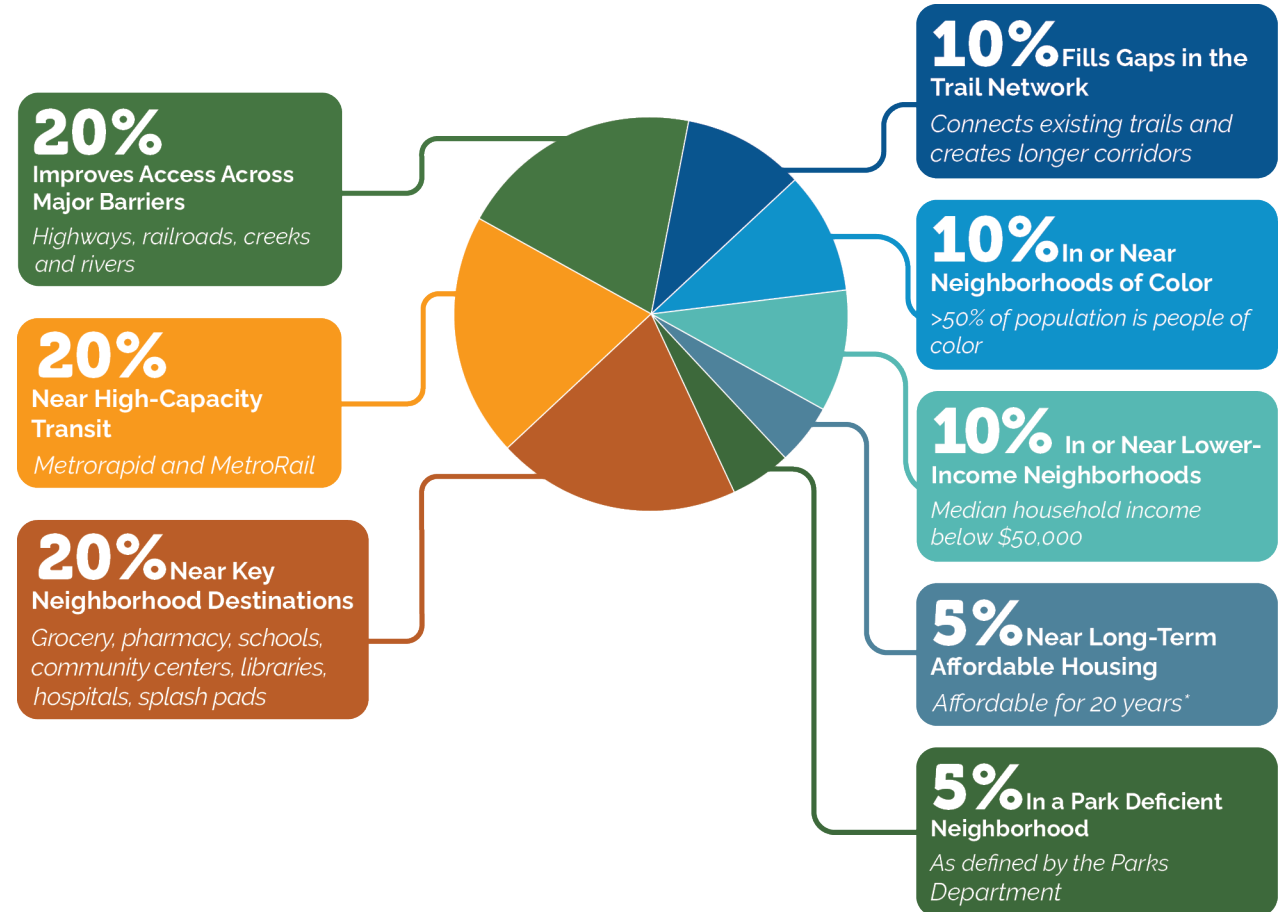
Urban Trails Plan

Updated Network

- Based on fieldwork
- Additions/modifications by City staff
- Removal of redundant segments
- Community Feedback

Updated Prioritization

- Data-driven prioritization model based on public input and city policies



Sidewalks, Crossings, and Shared Streets Plan

Updated Network

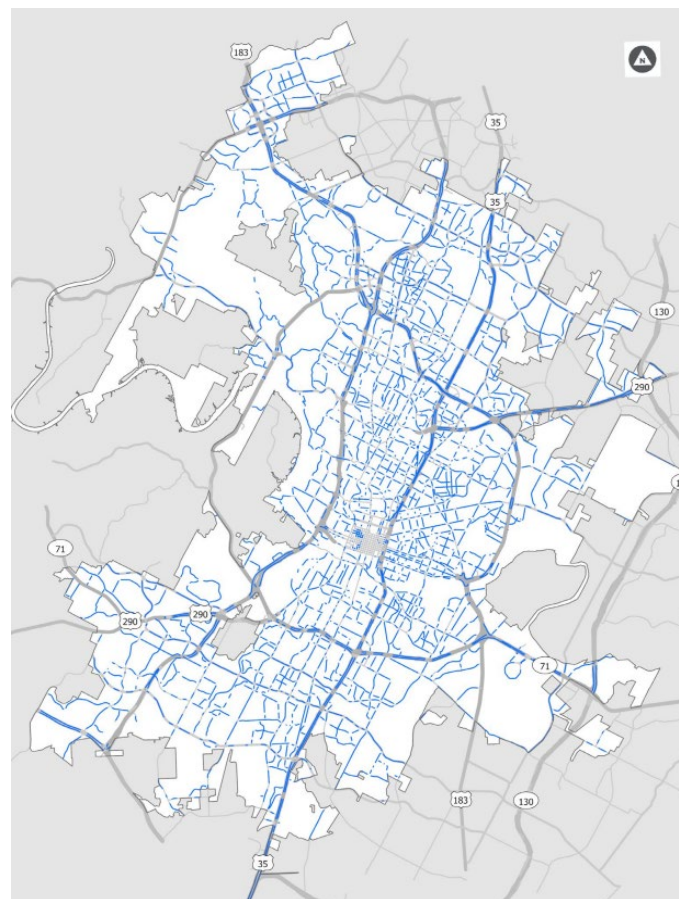
- Provide safe, comfortable, and accessible pedestrian passage along and across every public street.

Updated Prioritization

- **Prioritize equity** in the completion and maintenance of the pedestrian network by 1) allocating more resources in areas of historical inequity and ongoing vulnerability; and 2) providing funding through the full life cycle and maintenance of the assets.



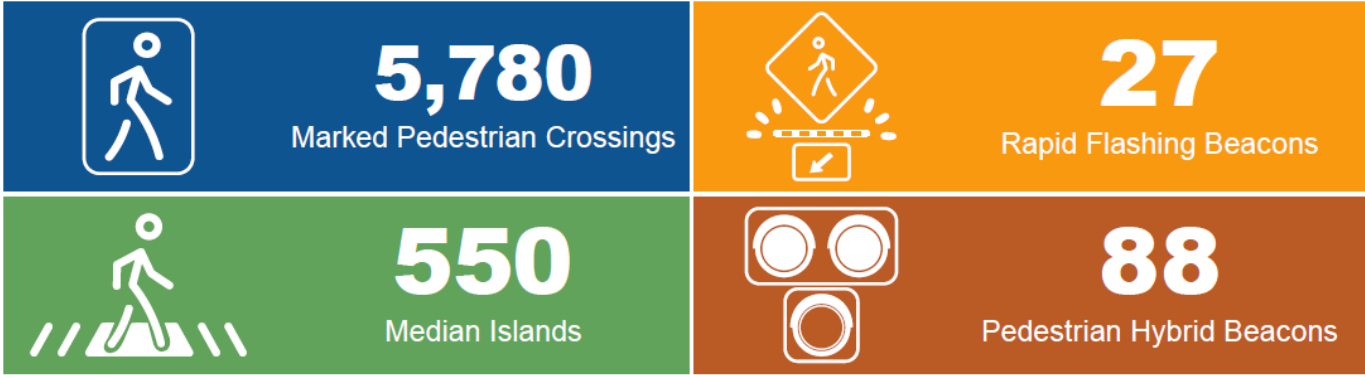
Planned Pedestrian Network



Pedestrian Crossings Gaps

Crossings and Crossing Gaps

Snapshot of Pedestrian Crossings Features in Austin



Corridor Gap Crossing Summary

	# of Gaps	Gap Total Length (mi.)	Mileage of Level 2/3/4 Streets	Gap %
Citywide	1,986	607	1,040	58%
In Focus EAZs	698	222	348	64%



Bicycle Plan

- **Updated Network**

- AAA Bicycle Priority Network additions were focused on equity and connections to transit, corridor and other projects

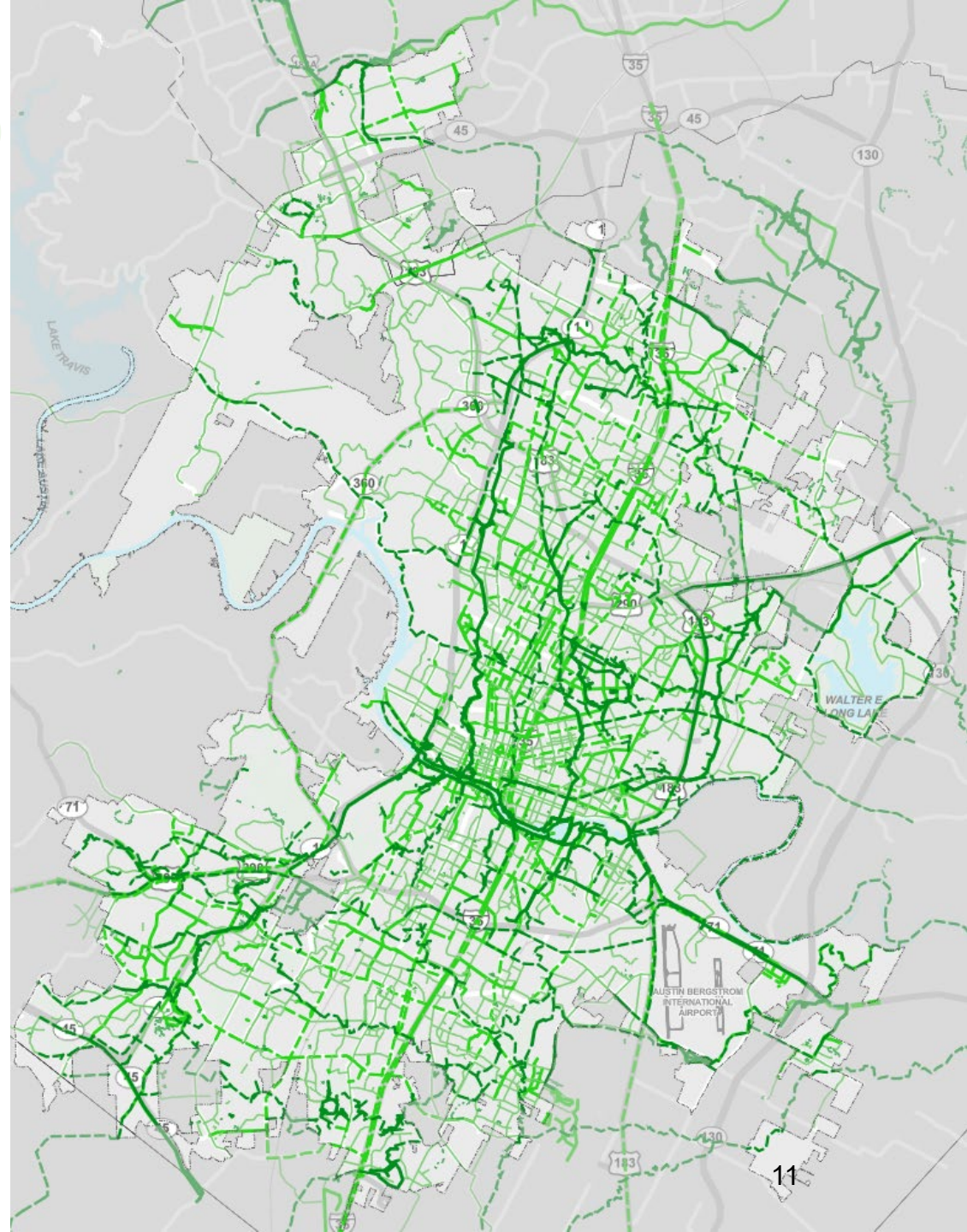
- **Updated Prioritization**

- **Connections to . . .**

- Neighborhood Destinations
- Nature
- City-wide Destinations

- **New prioritization model**

- A model that includes factors related equity, travel demand, destinations, density, transit, network deficiency, and cost



What's in this ASMP Amendment Cycle

POLICY DOCUMENT

ASMP policy document updates to align with ATXWBR plans

- Changed Sidewalk System to Pedestrian Network to reflect the Sidewalks, Crossings, and Shared Streets Plan
- Updated Indicators and Targets
- Updated Maps
- Action Item revisions and additions
- Various minor document updates to supporting text

**All proposed changes can be found in the ASMP Redline using the Amendment Log with ID's and page numbers*

STREET NETWORK TABLE AND MAP

Street Network updates

- Sidewalks, Crossings, and Shared Streets, Plan
- Bicycle Plan

**All proposed map changes can be found online at [AustinTexas.gov/ASMP](https://austintexas.gov/ASMP)*

Schedule | Next Steps

Boards and Commissions (Feb – March)

- **Bicycle and Pedestrian Advisory Councils** – February 6
- **Urban Transportation Commission** – February 7
- **Zoning and Platting Commission** – February 21
- **Joint Sustainability Committee** – February 22
- **Joint Inclusion Committee** – February 22
- **Planning Commission** – Briefing February 28
- **Council Mobility Committee** – March 2

ATXWBR Public comment : *January 27 - March 20*

ASMP Amendments Public comment : *March 24 – April 25*

Planning Commission Recommendation

: *May 30*

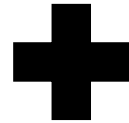
Release Final Drafts based on public comment and recommendations

: *early July*

City Council Public Hearing and Action

: *anticipated July 20*

Questions?



atx
Walk Bike Roll
Urban Trails | Sidewalks | Bikeways Plans

