



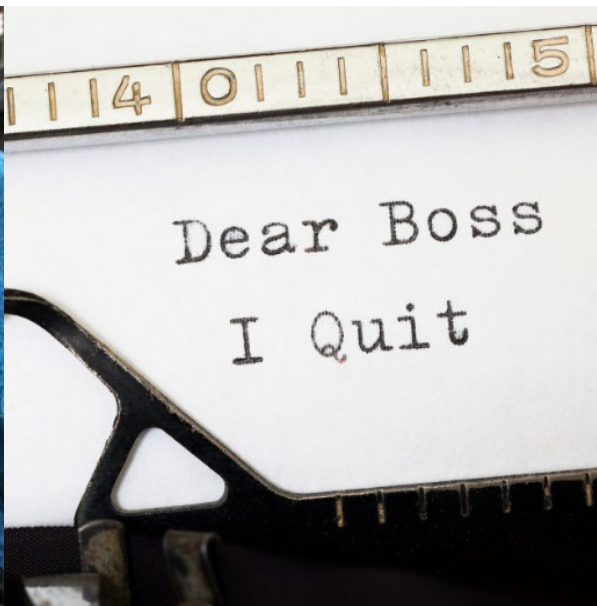
City of Austin's Telework Equity Impact

Joint Inclusion Committee

June 28, 2023

Whitney Holt

Pushing for a return to office rather than expanding telework demonstrates leadership that is out of touch with the needs of taxpayers and the workforce.

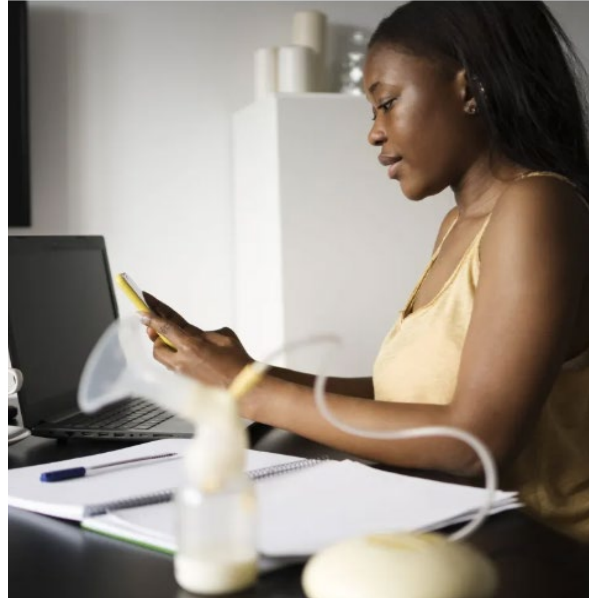


Repealing telework is an effective pay cut that will have disproportionately negative impact across race and gender.





**Telework facilitates a more diverse
and inclusive workplace.**



A fully maximized telework policy is the only option that both saves taxpayers money and brings the City of Austin closer to our Climate Equity goals.



**Austin Strategic
Mobility Plan**



Even when commutes are reduced in frequency, the function and existence of office buildings being utilized even just one day a week by each worker negatively impacts the environment and diverts land resources from projects that better meet community needs.



