



# City of Austin

## Housing and Planning Department

P.O. Box 1088, Austin, TX 78767 -1088

(512) 974-3100 ♦ Fax (512) 974-3112 ♦ [www.cityofaustin.org/housing](http://www.cityofaustin.org/housing)

### MEMORANDUM

**TO:** Todd W. Shaw, Chair &  
Planning Commission Members

**FROM:** Maureen Meredith, Senior Planner, Inclusive Planning Division, Planning  
Department  
Jonathan Tomko, Business Process Consultant, Housing Department

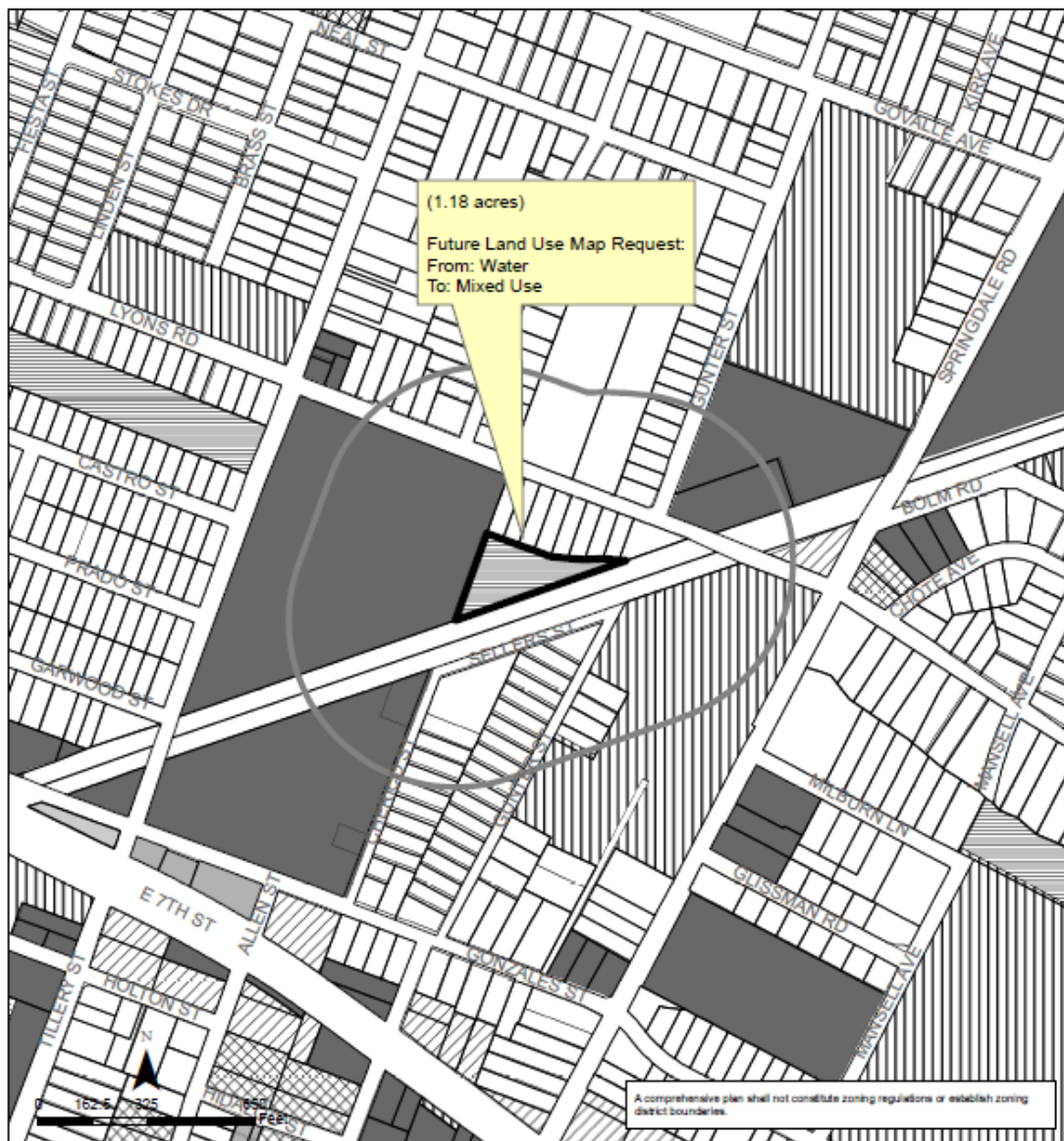
**DATE:** July 5, 2023

**RE:** NPA-2023-0016.01.SH\_Lifeworks III at Tillery  
C14-2023-0018.SH\_Lifeworks III at Tillery  
701 Tillery Street  
Govalle/Johnston Terrace Combined (Govalle) Neighborhood Planning  
Area

Staff requests a postponement of the above-referenced case from the **July 11, 2023** Planning Commission hearing to the **August 22, 2023 hearing date** to allow staff additional time to review the application.

The postponement request was made in a timely manner and meets the Planning Commission's policy.

Attachments: Plan Amendment Map  
Zoning Map



### Govalle/Johnston Terrace Combined Neighborhood Planning Area NPA-2023-0016.01.SH

This product is for informational purposes and may not have been prepared for or be suitable for legal, engineering, or surveying purposes. It does not represent an on-the-ground survey and represents only the approximate relative location of property boundaries.

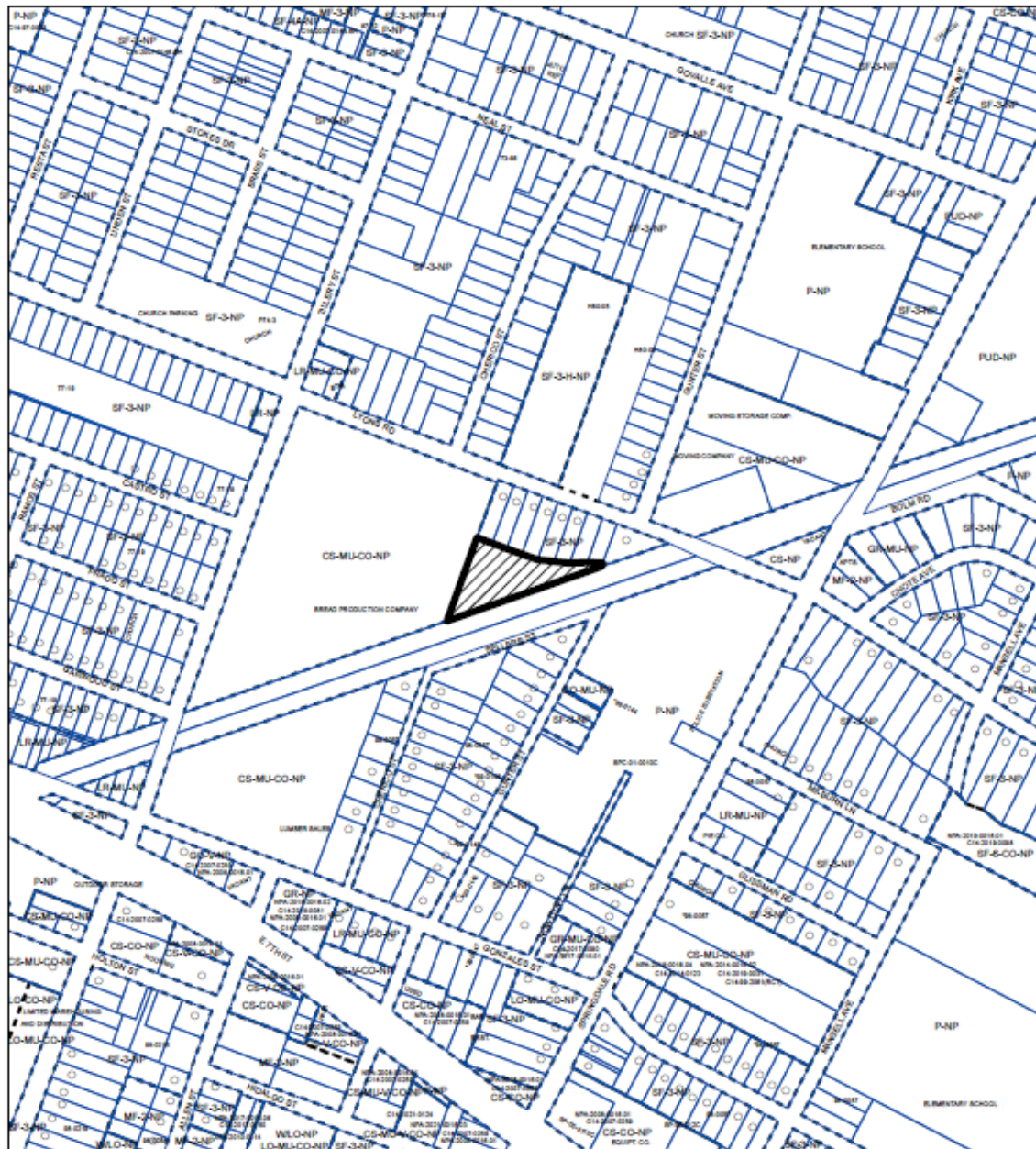
This product has been produced by the Housing and Planning Department for the sole purpose of geographic reference. No warranty is made by the City of Austin regarding specific accuracy or completeness.




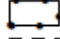
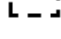
City of Austin  
Housing and Planning Department  
Created on 2/24/2023, by: MeeksS

#### Future Land Use

	Subject Tract		Multi-Family
	500 ft. notif. boundary		Office
	Civic		Single-Family
	Commercial		Transportation
	Mixed Use		Water
	Mixed Use/Office		



1" = 400'

-  SUBJECT TRACT
-  PENDING CASE
-  ZONING BOUNDARY

### ZONING

ZONING CASE#: C14-2023-0018.SH

This product is for informational purposes and may not have been prepared for or be suitable for legal, engineering, or surveying purposes. It does not represent an on-the-ground survey and represents only the approximate relative location of property boundaries.

This product has been produced by the Housing and Planning Department for the sole purpose of geographic reference. No warranty is made by the City of Austin regarding specific accuracy or



Created: 2/21/2023