



TRANSPORTATION
PUBLIC WORKS

Downtown Commission

July 19, 2023





Our Future 35 will provide transformational new infrastructure for Austin that is of regional and national significance

- Between City and UT, potential to create approx. 30+ acres of new urban real estate
- Like I-35, past highway projects across the country have created physical divides within their communities
- Nationally, other cities are actively monitoring Our Future 35 as a leader for major freeway capping projects

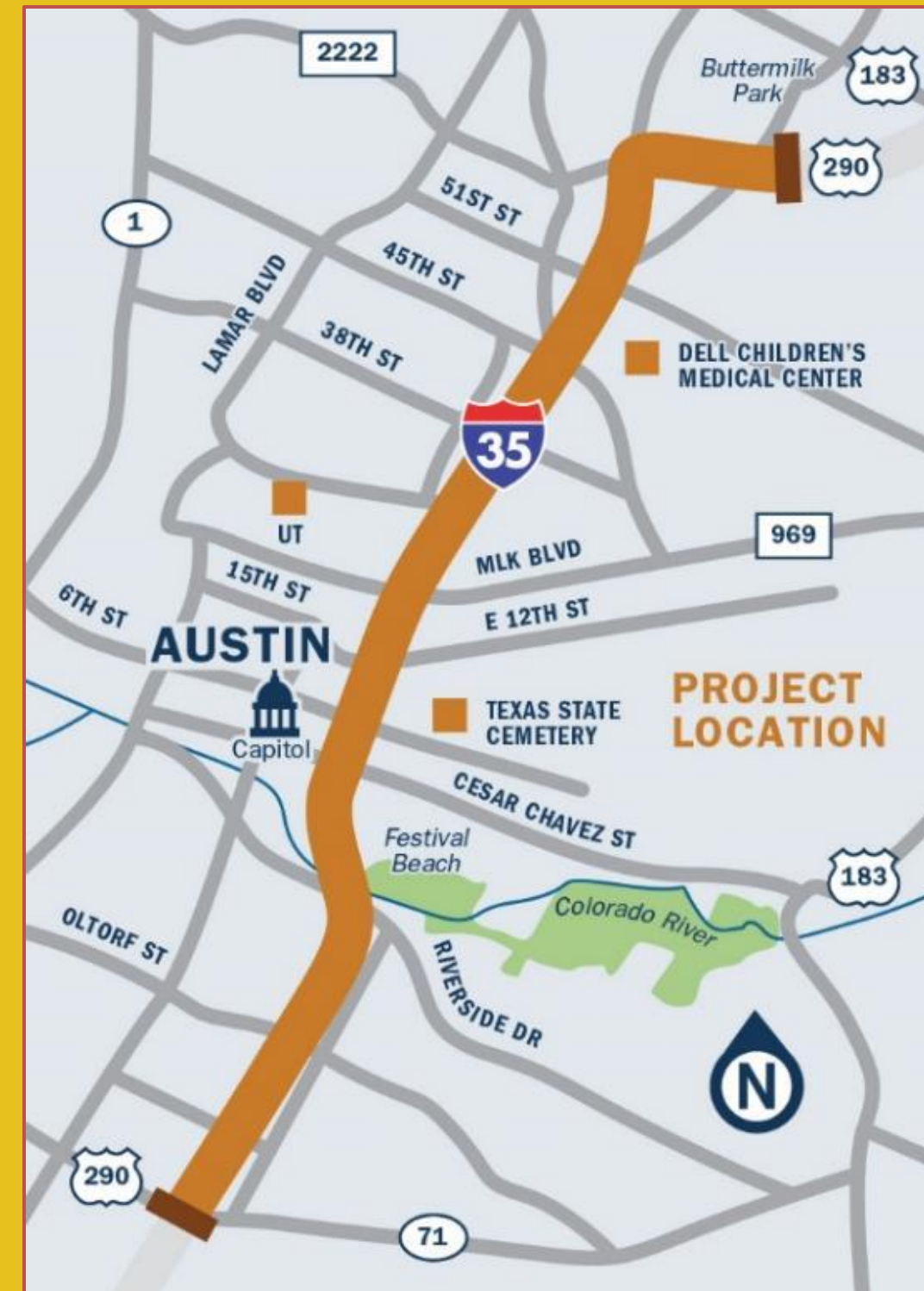


Because the Texas Department of Transportation (TxDOT) is proposing to widen and lower portions of the Austin I-35 corridor, the City has an opportunity to change the landscape of Central Austin through the construction of "caps" and "stitches" that will make important strides in addressing growth challenges regarding traffic congestion, public safety, mobility efficiency, and quality of life.

While it cannot mend the historic divide created by the original construction of I-35, this once-in-a-generation project forges a new future with community benefits that celebrate and connect all Austinites.



TXDOT I-35 CAPITAL EXPRESS CENTRAL PROJECT

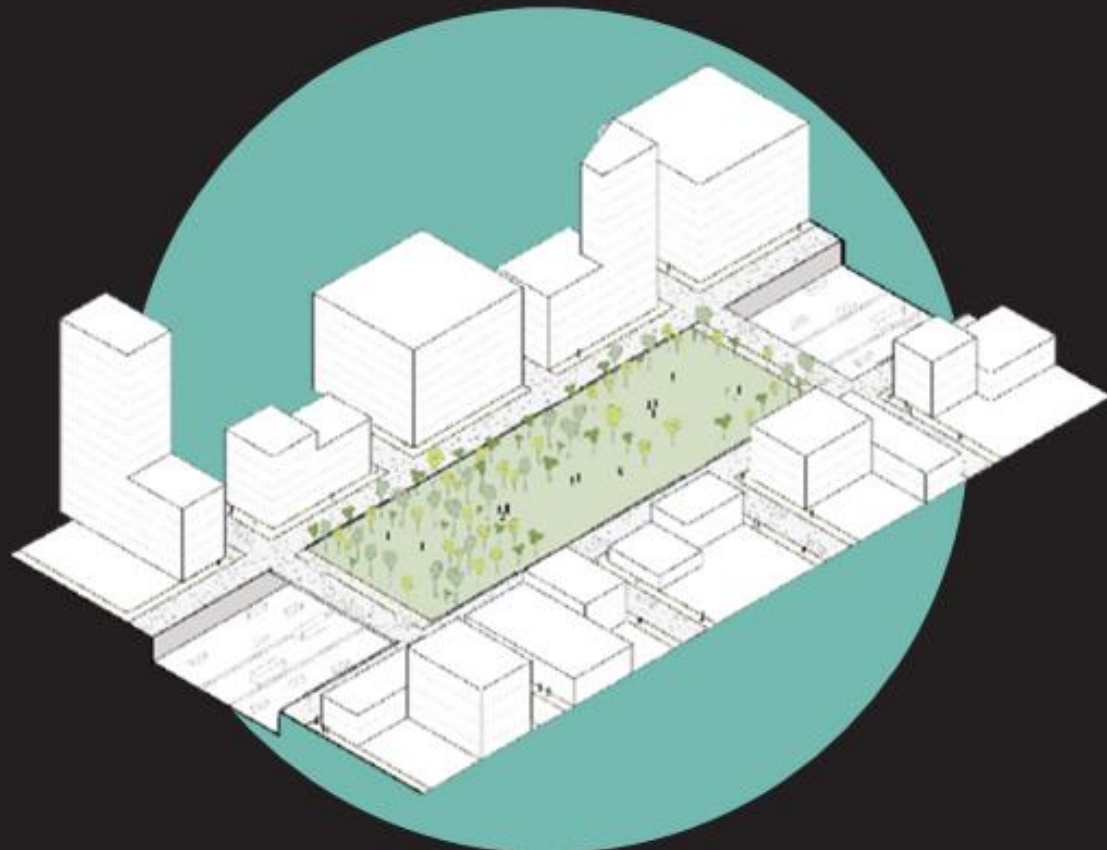


- Limits: US 290 East to SH 71/Ben White Boulevard, with additional flyovers at I-35 and US 290 East.
- Length: 8 miles.
- Estimated construction cost: \$4.9 billion

WHAT ARE CAPS & STITCHES?

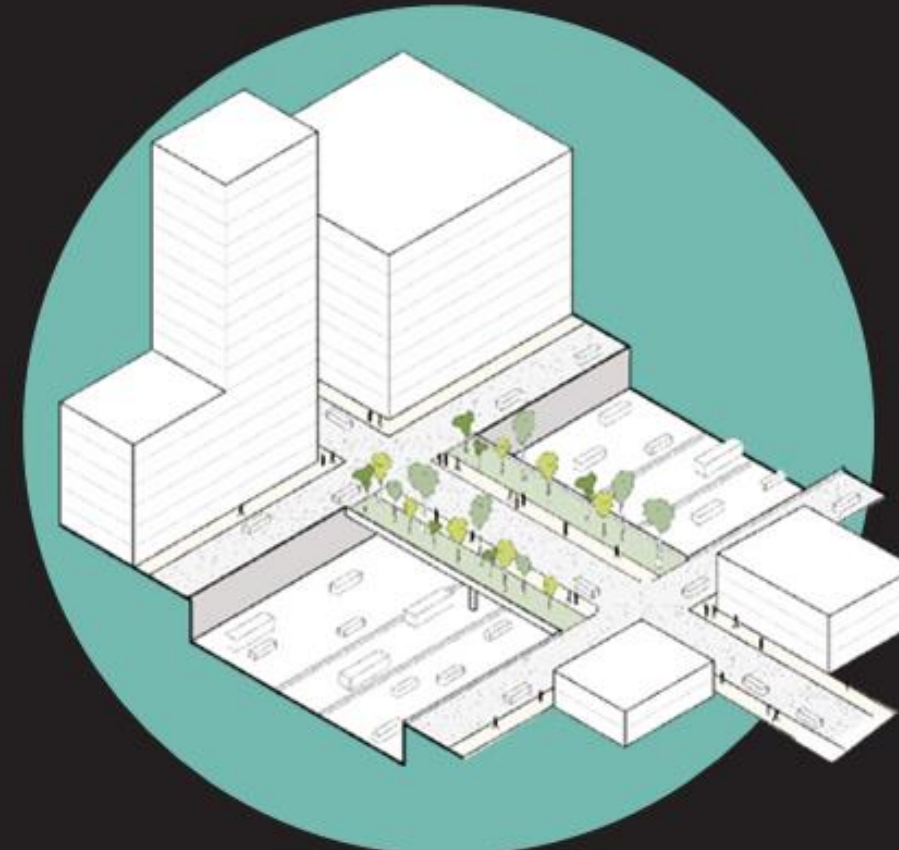
HIGHWAY CAP

A cap is a large deck over a highway to accommodate new programming such as structures or green space. Caps are also referred to as a deck, land bridge or lid.

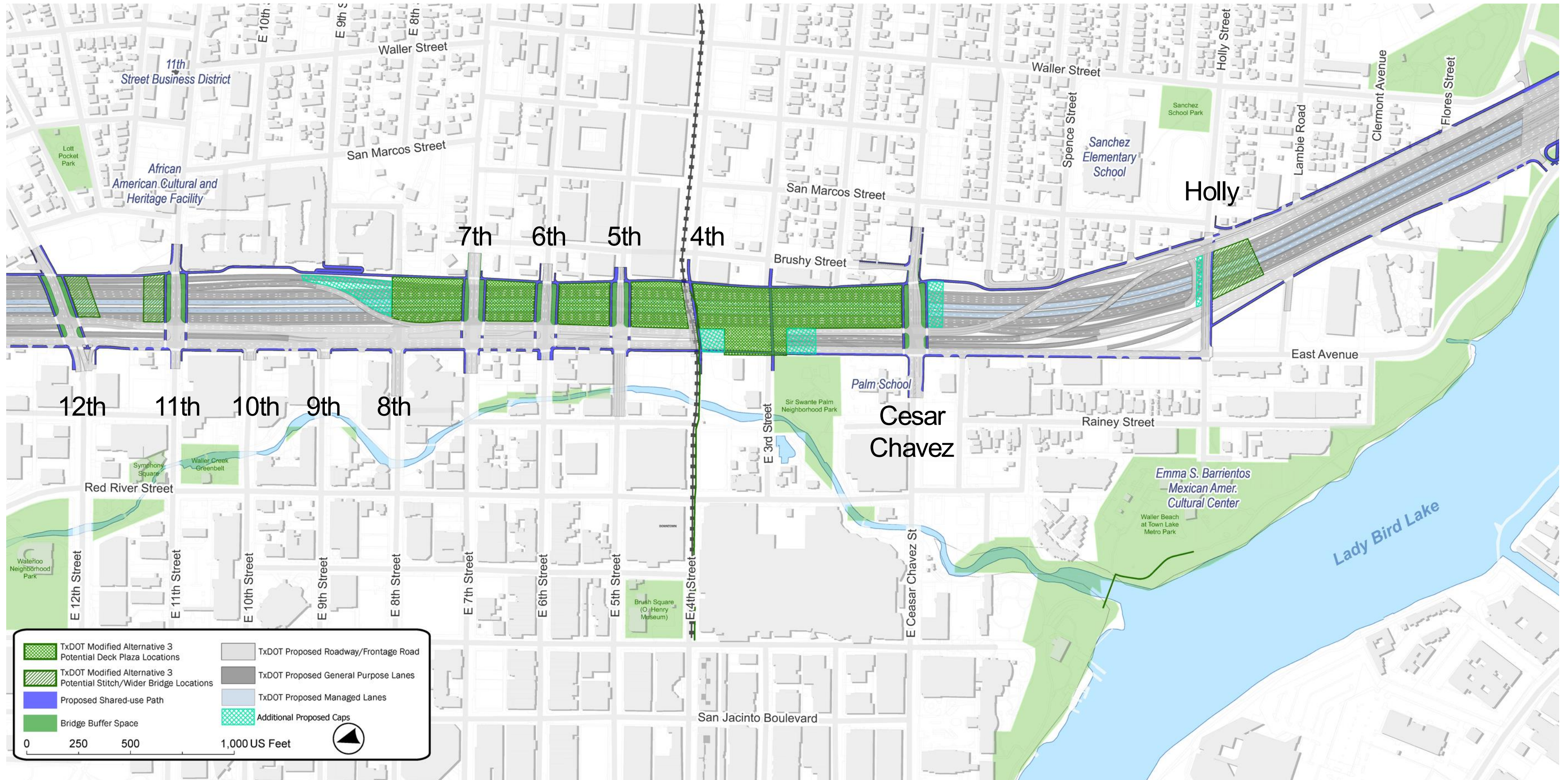


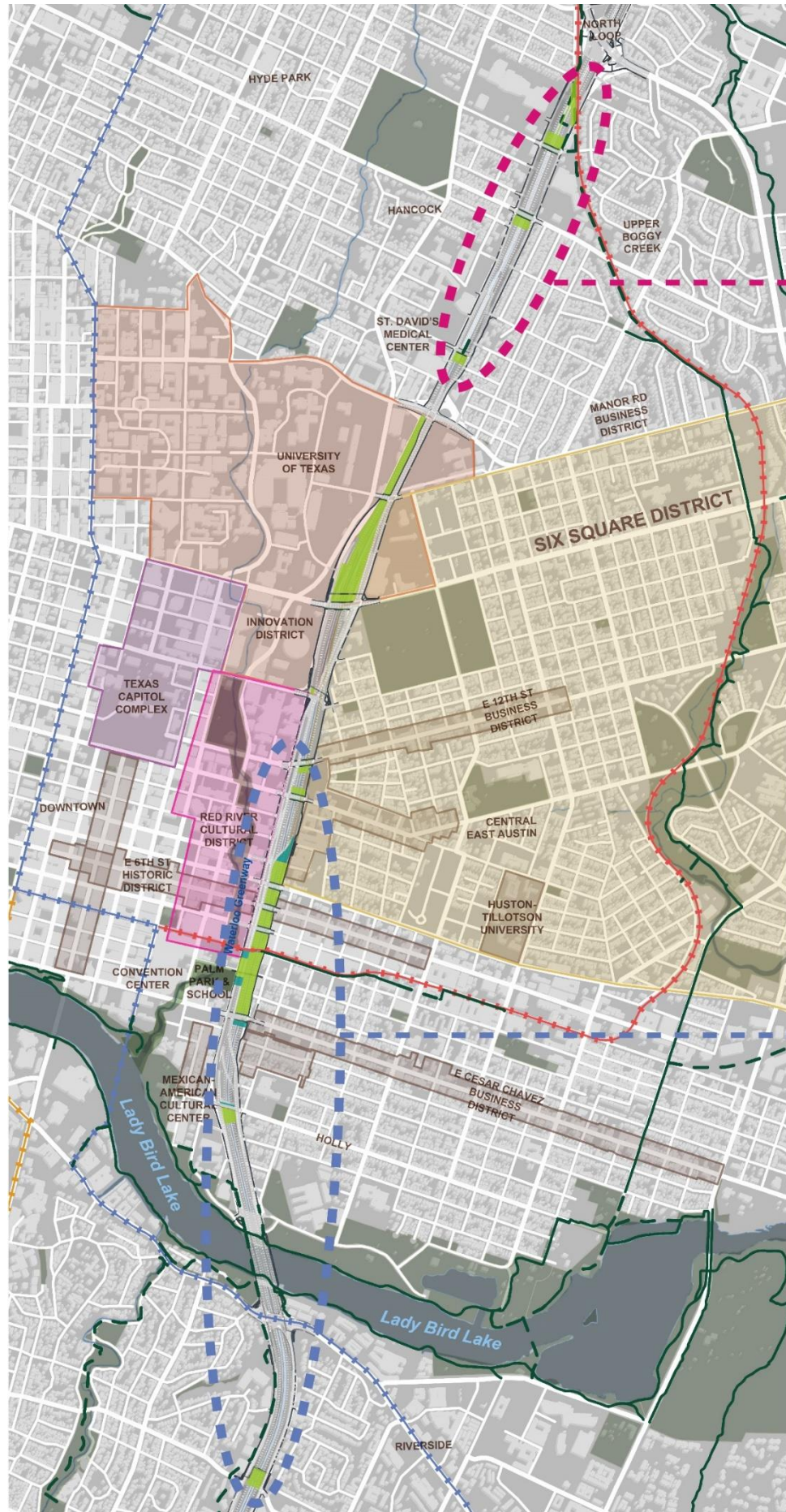
HIGHWAY STITCH

A stitch is a widened bridge over a highway, connecting one side of the highway to the other. Amenities include landscaping, shade, and multi-modal enhancements.



Cap Locations: Ladybird Lake to 12th Street (Based on TxDOT's Alternative 3)

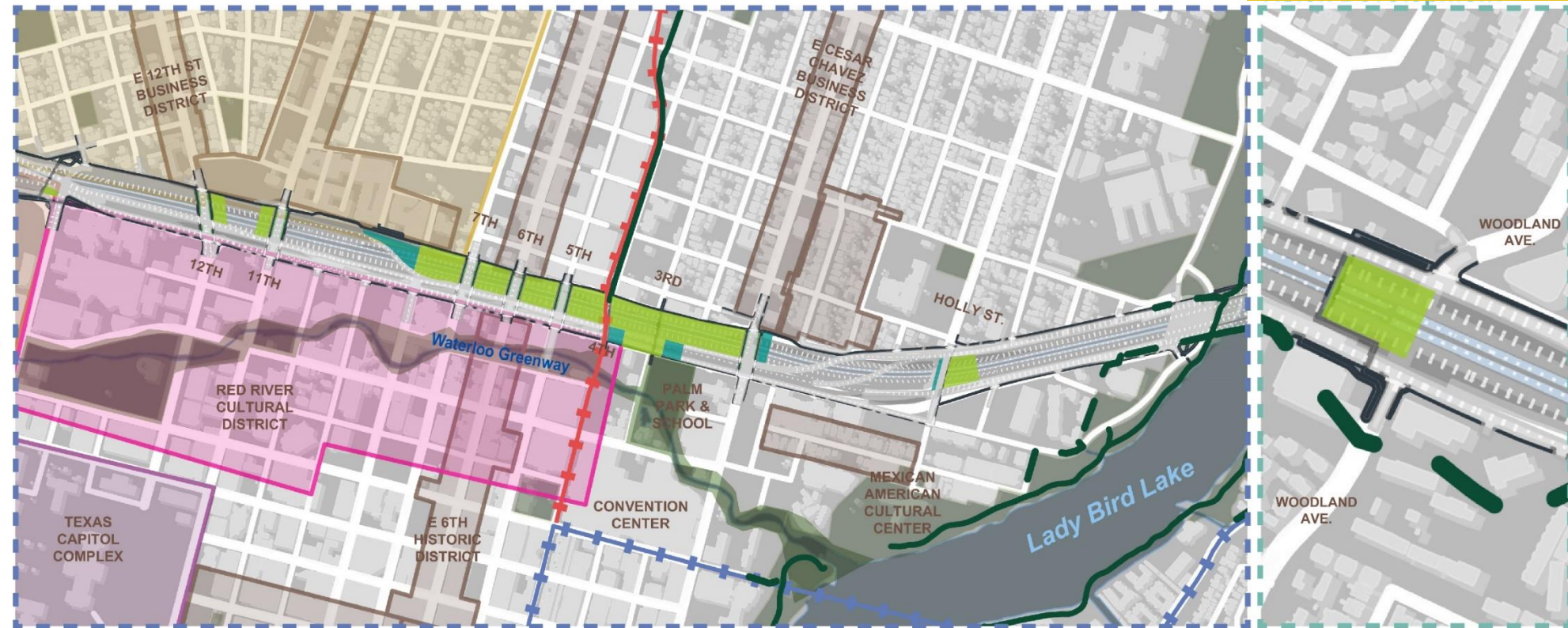




VISION
PLAN
PHASE 2



VISION
PLAN
PHASE 1



- TxDOT Potential Cap Location
- TxDOT Extended Cap Location
- Proposed Shared Use Path

- Parks
- Districts
- Existing Trails

- Proposed Trails
- Metro Red Line
- Planned Rail Line

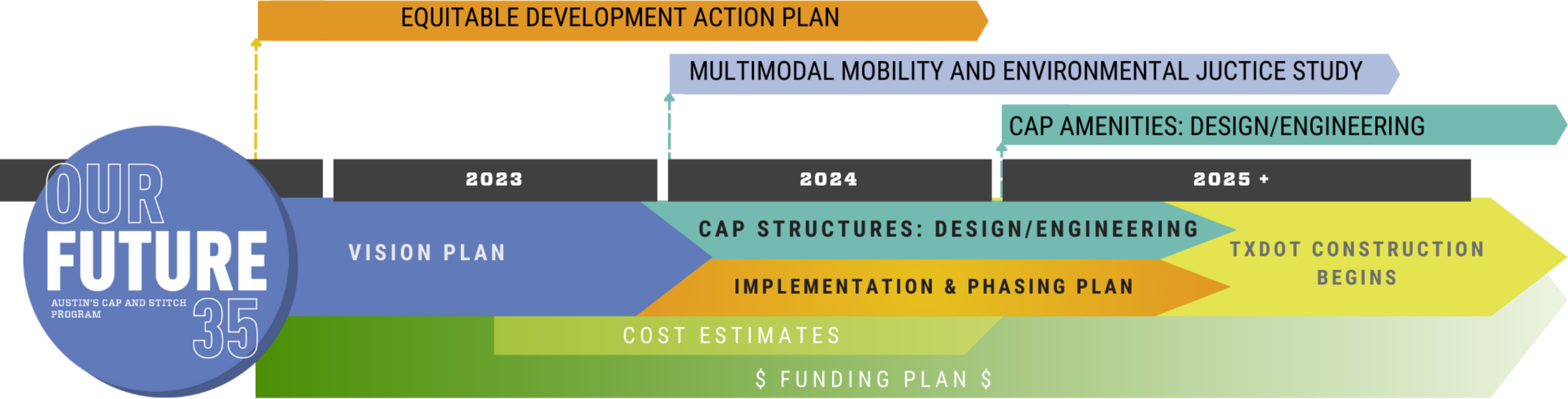
Woodland Ave.
Vision Development



CAPPING OPPORTUNITIES



TIMELINE



INFRASTRUCTURE OUTCOMES

Infrastructure of this magnitude must address multi-faceted needs including broad community benefits.



- Design and constructability
- Public space activation, programming, ongoing stewardship
- Multimodal transportation across, to, and from new freeway caps
- Real estate development scenarios, including partnerships
- Health outcomes and environmental mitigation needs
- Economic, community development, and arts/culture integration
- Equity and past/present impacts of freeway construction
- Potential impacts to surrounding neighborhoods, affordable housing and displacement impacts to residents, businesses

COMMUNITY STEERING COMMITTEE



- Comprised of community leaders, local business owners, and industry experts.
- Community Steering Committee provides feedback and guidance on:
 - Project Vision, Goals and Objectives
 - Public Outreach and Marketing
 - Program Scope and Process

Community Steering Committee MISSION STATEMENT:

Our Future 35 endeavors to bring community members to the table in the creation of a Vision Plan for shared public spaces bridging Austin over I-35.

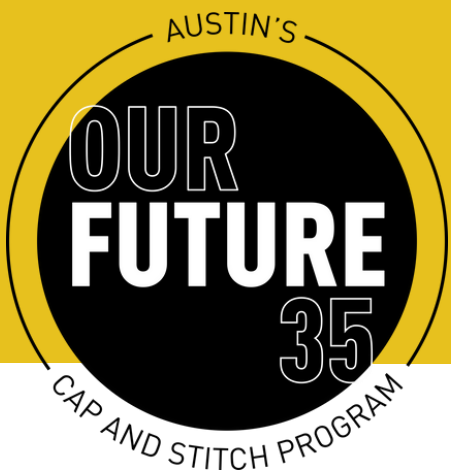
VISION STATEMENT:

New shared public spaces over I-35 are inclusive and sustainable; support economic opportunity and equity; celebrate heritage and cultural narratives; support community health and restorative natural spaces; encourage environmental stewardship; and promote safe and comfortable access to all citizens.



COMMUNITY STEERING COMMITTEE

Our Future 35 Vision, Mission, and Goals



Equity & Inclusivity

Engage community members who have been impacted by and excluded from past infrastructure decisions, and ensure that new amenities are dynamic, sustainable, and welcome communities of all races and identities.



Economic Affordability & Vitality

Foster design elements and activations for small and local businesses, and mitigate displacement and adverse cost of living impacts of the project on surrounding neighborhoods and communities of color.



Community & Cultural Narratives

Celebrate the historical and cultural fabric of past and present communities surrounding I-35 while recognizing the city and highway's histories of fracture, and collect and amplify the narratives and histories of community members.



Health & Human Nature

Create spaces that enhance the quality of life and well-being of users, encourage active transportation, employ native and adapted resilient and restorative landscapes, and promote connection to nature.



Environmental Sustainability

Advance the Austin community's commitment to environmental stewardship, recognize broader climate action imperatives, and build the capacity to successfully maintain and adapt these spaces.



Safety & Accessibility

Connect community members to jobs, services, and each other and promote safe and comfortable hubs that provide access to, from, and across I-35, and foster modes of travel that welcome and support all ages and abilities.



TAC Workshop

(May 31st, 2023)

Technical Advisory Committee (TAC) is made up of City Austin Employees and local experts trained in planning, design and engineering fields to provide strategic and technical oversight on the community-led design process and implementation.



Stakeholder Workshops

(July 11 and 12th)

Sessions:

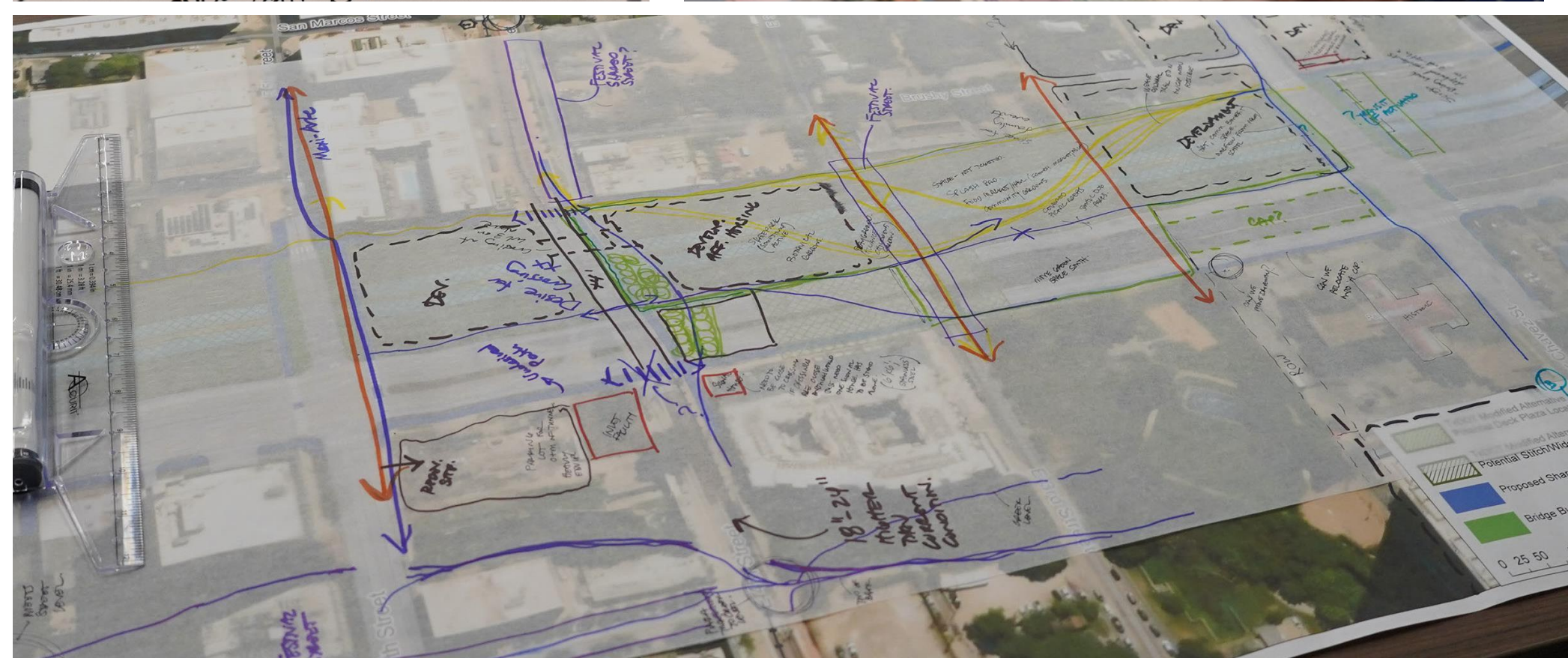
Holly Street

Cesar Chavez-4th Street

4th Street-9th Street

11th & 12th Street

Partnerships (long-term)
TO COORDINATE EFFORTS
SAFETY BUILT INTO
DESIGN EARLY SO LESS
POLICING NEEDED
IDEA ♥ JUST FOR HISTORIC RESIDENTS
DAYS; DISCOUNTS OR FREE
ADMISSIONS
FOLKS TRAVEL
IN FROM ELGIN
FOR CONCERTS
HAVE LOTS OF
STAY FOR AWHILE
CONSISTENT
DESIGN STRATEGIES
Being able to honor
history of those who
built Austin
AND MAKING
SURE FOLKS
CAN TRULY
BENEFIT



EQUITABLE DEVELOPMENT STRATEGY

Equitable Development as defined by the project. Created in partnership with the Community Steering Committee

Equitable Development is accomplished when the process and product of a physical development project centers the needs and aspirations of marginalized communities by:

- Avoiding and counteracting their displacement
- Elevating their voices in decision-making
- Reflecting their cultures in design and programming
- Providing a financial stake in the outcomes



Credit: Six Square Facebook



EQUITABLE DEVELOPMENT STRATEGIES

1

Enhance Workforce Development

- Support displaced facilities and people
- Small Business Incubator
- Training and employment opportunities for youth, service employees,
- Accessibility to resources



2

Integrate Art, Music, Performance

- Wayfinding elements show history/culture
- Integrate cultures of different communities
- Flexible multi-scale spaces available to low-income creatives and studios
- Cultural center and opportunities for local pop-up



3

Rethink the Future of Retail

- Affordable spaces (vendors, pop-ups, etc.)
- Bringing back displaced businesses and supporting minority-owned businesses
- Coordinate with ongoing equitable economic development planning efforts (Housing, Planning, EDD)



4

Align Housing Demand with Sites for Growth

- Affordable housing for artists, service employees, and displaced populations (include adjacent sites)
- Visibility in housing
- Sustainable utilities (especially cost-reducing approaches)



5

Create Distinctive Open Space and Development Cluster

- Revenue generation capacity
- Accessible for inclusive community
- Community activities and rest areas (cultural celebration, yoga, ...)
- Cost-benefit analysis



6

Enhance Community Capacity Building

- Highly activated spaces (foot traffic, profit center, performance area, ...)
- Affordable flexible spaces
- Elements teaching history and culture
- Democratic discourse spaces





EQUITABLE MOBILITY - UPCOMING STUDY

Equitable Multi-modal Mobility

- Mobility Measures
- Emergency access measures
- Performance index for multimodal mobility
- User experience mapping
- Prioritized list of mobility improvement projects

Equitable TOD

- Transit access points
- Infrastructure improvements for transit access
- Mobility hub planning
- ETOD implementation action plan
- Transit access performance analysis

Environmental Justice and Health Toolkit

.....

- Environmental suitability assessment
 - Air quality
 - Noise pollution
 - Heat island impacts
- Improvement and mitigation measures
- At risk user group considerations



Atkins Study Renderings

FUNDING STRATEGY DEVELOPMENT



DEVELOP FUNDING STRATEGY

- Capital Improvements: Structures and Amenities
 - PRIORITY: Cap Structures
- Operations/Maintenance



ASSESS ALTERNATE FUNDING

- Value Capture
- P3, private/public partnerships
- Naming Rights
- Sponsorships and Philanthropy



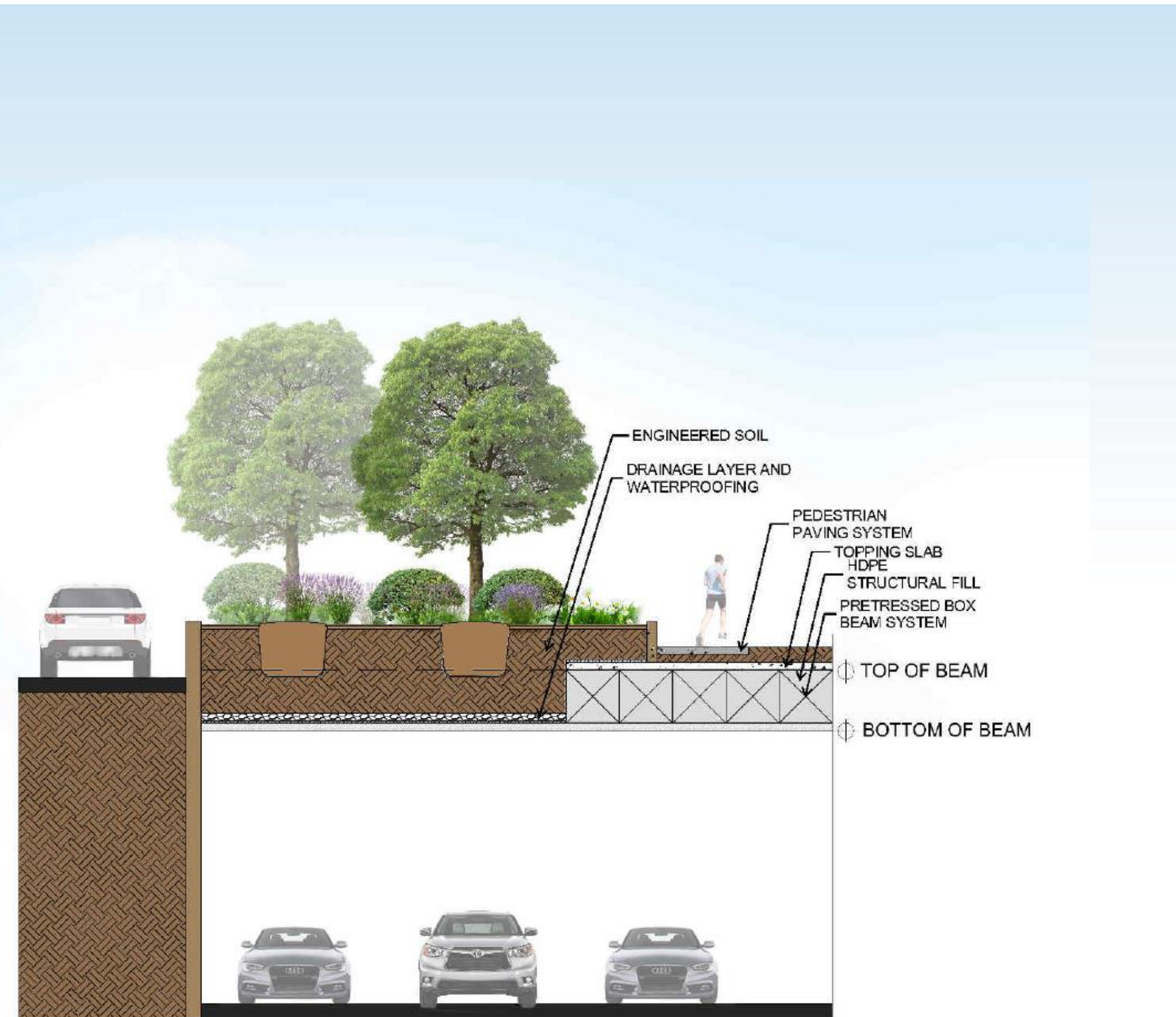
FUNDING STRATEGY DEVELOPMENT

EXPLORE FEDERAL FUNDING, GRANTS, FINANCING

- Awarded USDOT Reconnecting Communities Planning Grant -\$1.12M
- Awarded Community Project Funding \$1.5M

Other opportunities:

- TIFIA Credit Program
- Mega Grant Program, etc.
- Reconnecting Communities and Neighborhoods Grant Program



HOW CAN YOU GET INVOLVED?

AUGUST - FOCUS GROUPS

OPEN TO THE PUBLIC

- ACTIVE TRANSPORTATION AND SAFETY
- SUSTAINABLE DESIGN
- ACCESSIBILITY
- DESIGN AND ARCHITECTURE
- ARTS AND CULTURE
- HISTORY AND EQUITY
- ENVIRONMENTAL JUSTICE

SEPTEMBER - OPEN HOUSE TOUR



www.ourfuture35.com

ourfuture35@austintexas.gov



PARTNERS



TEXAS

The University of Texas at Austin

DOWN
AUSTIN TOWN
ALLIANCE



Community
Steering
Committee

OUR FUTURE 35

Austin's Cap and Stitch Program



TRANSPORTATION
PUBLIC WORKS



OurFuture35@austintexas.gov



/ATXmobility



@AustinMobility

WWW.OURFUTURE35.COM