



AUSTIN TRANSIT PARTNERSHIP

IN PARTNERSHIP WITH



CapMetro

Austin Light Rail: Recommendation

June 20, 2023



AUSTIN LIGHT RAIL IMPLEMENTATION PLAN

LEGEND

AUSTIN LIGHT RAIL
PHASE I

AUSTIN LIGHT RAIL
PHASE I
PRIORITY EXTENSION

FUTURE
AUSTIN LIGHT RAIL

MAJOR TRANSFER
POINT

PARK & RIDE

9.8
MILES OF NEW
LIGHT RAIL

15
LIGHT RAIL
STATIONS

TRANSIT CONNECTIONS

METRO RAPID

HIGH FREQUENCY
BUS

RED LINE

PROPOSED
GREEN LINE

ESTIMATED TRAVEL TIME

23 MINS

38TH - OLTORF

31 MINS

38TH - YELLOW JACKET

ESTIMATED AVG. # OF DAILY RIDERS SERVED
(2040)

28,500

20,000+
AFFORDABLE HOUSING UNITS SERVED
(SUBSIDIZED)

ACCESS TO

136,000+ CURRENT JOBS

200,000+ FUTURE JOBS

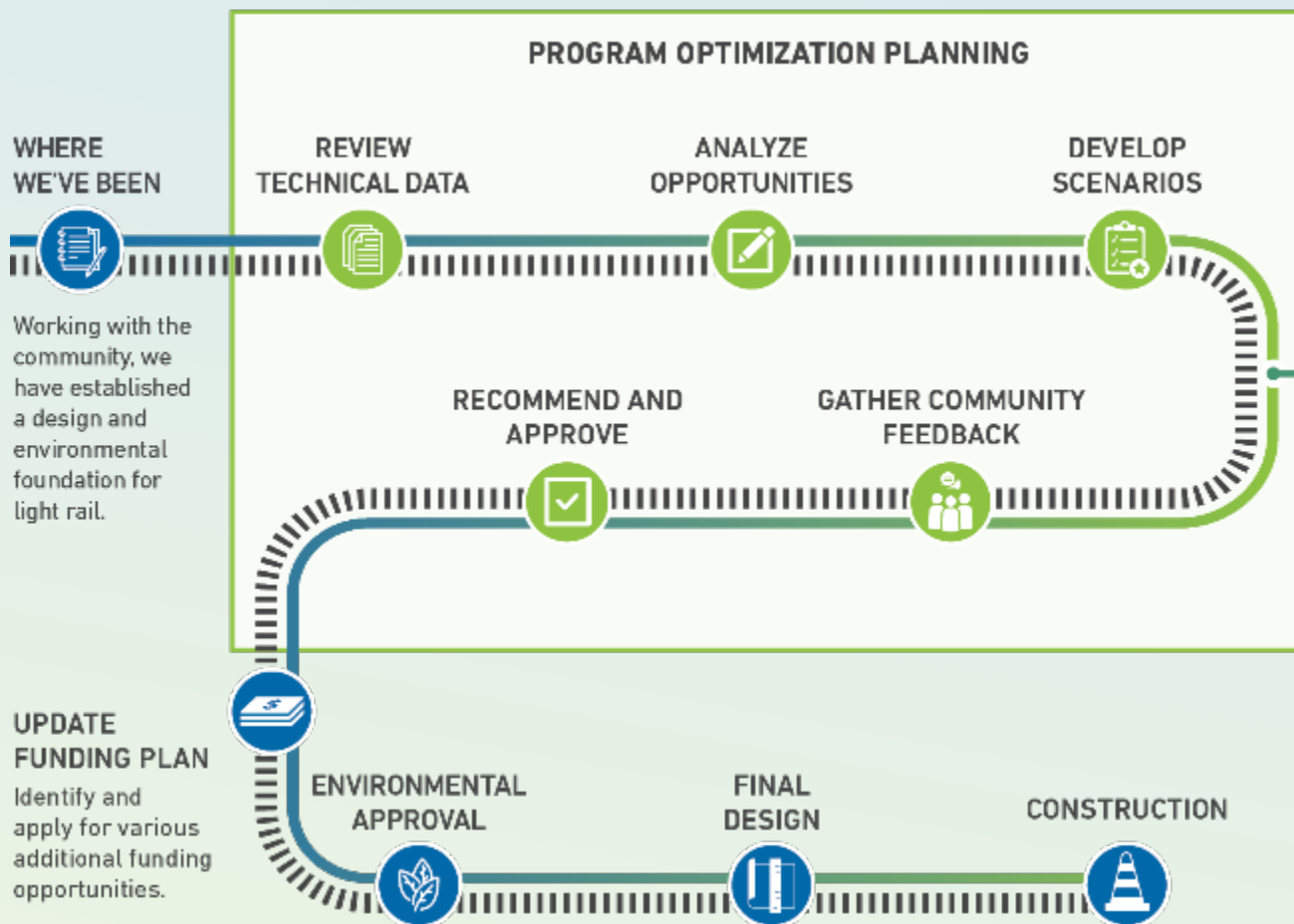
ANTICIPATED CAPITAL COST (CURRENT DOLLARS)

\$4.5-\$4.8B

LOCAL AND FEDERAL DOLLARS



PROGRAM PROCESS



COMMUNITY ENGAGEMENT



COMMUNITY DIALOGUE

LIGHT RAIL OPTIONS



MULTILINGUAL COMMUNICATIONS



IN-PERSON ENGAGEMENT



8,000+
PEOPLE ENGAGED



5,600+
TOTAL COMMENTS



91
ACTIVE
ENGAGEMENT
ACTIVITIES



45
BUS STATION AND TRAIN
STATION OUTREACH
LOCATIONS

WEBSITE



19,397 VIEWS
(ENGLISH+SPANISH)

2,017 PARTICIPANTS
(ENGLISH+SPANISH)

5,049 COMMENTS
(ENGLISH+SPANISH)



67K+ WEBSITE PAGE VIEWS
(COMBINED ACROSS ALL PAGES ON ATPTX.ORG)

OVERALL E-NEWSLETTER STATS



42K+ TOTAL RECIPIENTS
REACHED

806 TEXT MESSAGE
RECIPIENTS

57.2% AVERAGE UNIQUE
OPEN RATE

OVERALL SOCIAL MEDIA STATS



19K PAGE REACH ON ATP
SOCIAL MEDIA ACCOUNTS

54K POST
IMPRESSIONS

15K USERS
REACHED

WHAT WE HEARD



[...] Affirms that surface-running light rail is a good option to address the cost estimates for the Project Connect light rail plan.

-Urban Transportation Commission



RECA recommends ATP staff to choose the 38th to Oltorf to Yellow Jacket option.

-Real Estate Council of Austin (RECA)



TTC encourages ATP to have the light rail line cross Lady Bird Lake at the Trinity Street location.

-The Trail Conservancy



While all options are undoubtedly better than the current lack of any light rail, the working group has recommended the 38th to Oltorf to Yellow Jacket option because it lays the best foundation for the city overall.

-AURA - Austin for Everyone

Top Community Feedback Themes

- Supported the advancement of a light rail project that moves Austinites where they need and want to go
- Prioritized Mobility, Customer Service, and Access to Opportunities
- Focused on greater coverage, seamless integration with other transportation options, expandability of the system and affordably reaching key destinations including schools, medical centers, job centers, as well as areas around Austin including the airport, downtown, and the University of Texas
- Explored endpoint alternatives, expressed sentiments related to environmental impacts and benefits, and land use and housing

Community Advisory Committee (CAC)

The Austin Light Rail Implementation Plan is consistent with the CAC recommendation based on community feedback, conversations with stakeholders and staff, data analysis, and alignment with System-Wide Design Principles.





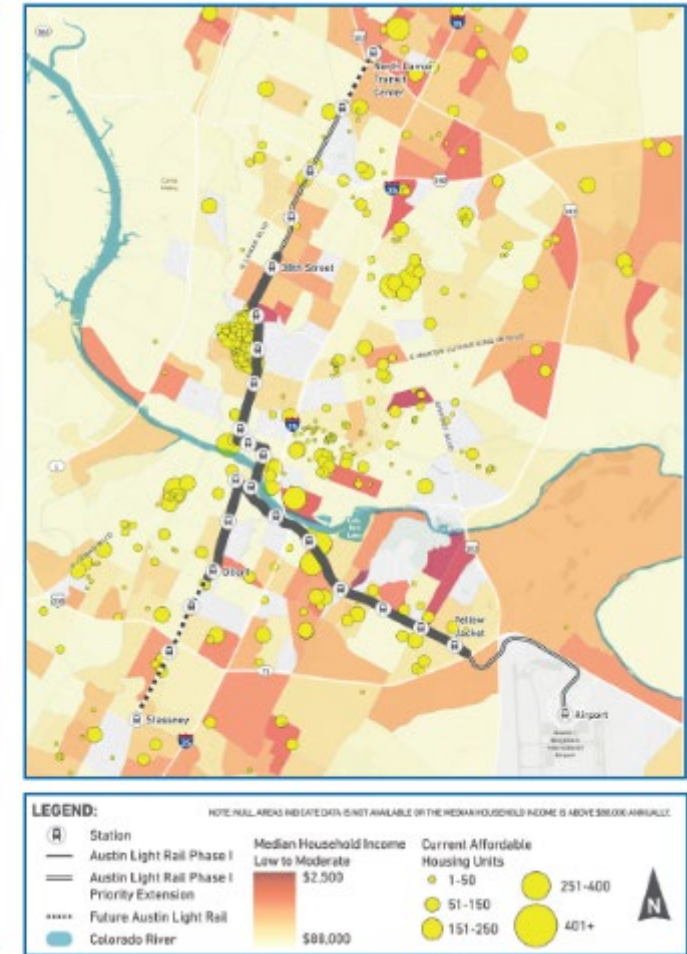
PRIORITIZE MOBILITY SOLUTIONS FOR HISTORICALLY UNDERSERVED COMMUNITIES

- Builds new infrastructure to serve historically underinvested areas
- Serves Black, Indigenous, & People of Color (BIPOC) communities, affordable housing units, lower income areas, and households that are more dependent on public transportation
- Connects communities with job centers and destinations throughout Austin

BIPOC Share of Population



Affordable Housing & Income

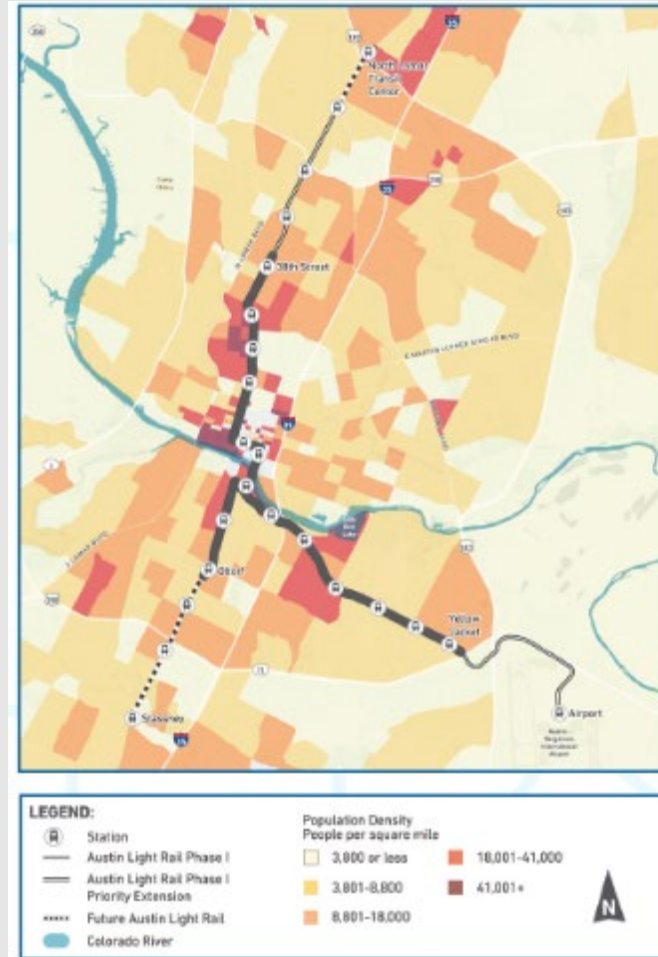




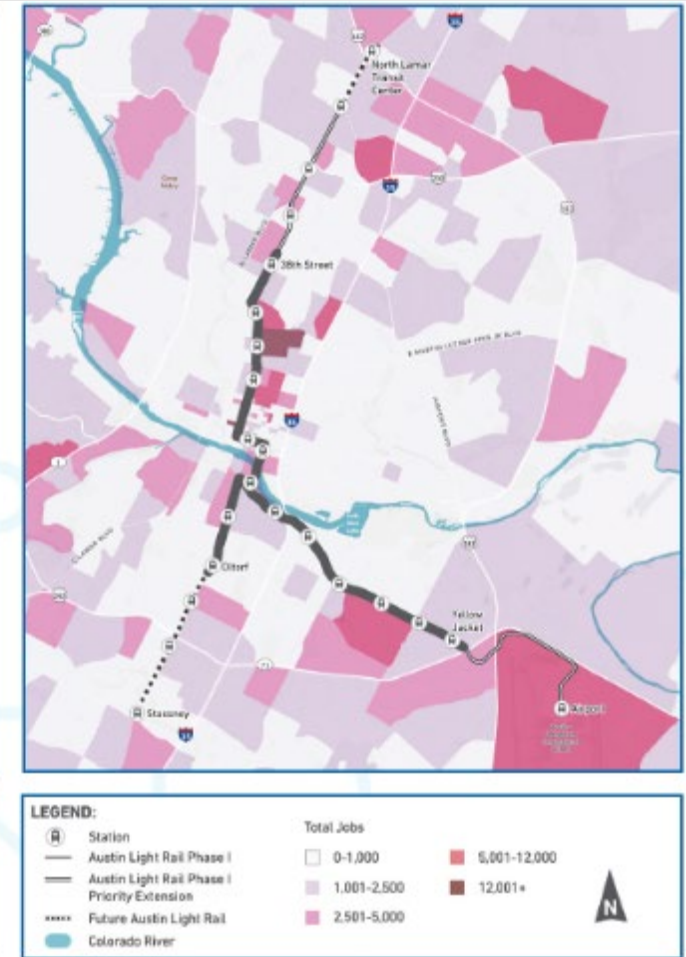
CONNECTING PEOPLE TO WHERE THEY NEED AND WANT TO GO

- Connects to job centers, education, medical centers, and downtown
- Provides access extending north, east, and south
- Generates strong ridership, and includes high ridership stations at UT, downtown, and Pleasant Valley/Riverside

2045 Population Density



2045 Total Jobs





PROVIDE AN EXPANDABLE INTERCONNECTED REGIONAL TRANSIT NETWORK

- Connects with existing Red Line and future Green Line commuter rail at Downtown Station
- Connects with current and future MetroRapid service including Pleasant Valley and downtown
- Links with key high ridership and high frequency bus routes
- Supports the pursuit of 50/50 mode share goal in the ASMP by providing more high frequency transit options to more places
- Supports transit network expansion to the north, south, east and west

Transit Connections



AUSTIN LIGHT RAIL PHASE 1 AND PRIORITY EXTENSIONS



Priority Extension: 38th to Crestview

- Opportunity to partner with CapMetro to grade separate the Red Line, to improve conditions at the nearby traffic intersection for all users and enable an on-street light rail service

Phase 1: 38th to Oltorf to Yellow Jacket

- Provides north, south and east coverage that best lays foundation for future expansions/extensions
- Builds new infrastructure to serve historically underinvested areas
- Reaches BIPOC communities and lower income households
- High number of possible transit connections
- Includes high ridership stations
- Connects people to jobs and education
- Creates jobs with new maintenance facility
- Close to airport to facilitate connection
- Advances ASMP goals for mode shift
- Connects to east side of downtown via Trinity St. river crossing

Priority Extension: Yellow Jacket to Airport

- Coordination with Airport Expansion and Development Program on light rail connection and station at the airport; Opportunity to leverage other funding sources

CONTACT US



Input@atptx.org

**AUSTIN
TRANSIT
PARTNERSHIP**

THANK YOU!