

Request for New
Special Use
Seniors Building

Gustavo “Gus” Garcia Recreation Center

GGRC sits on 47 acres

~20,000 Sq Ft building

After School & Teen Programs – After 1pm weekdays and weekends these populations are mainly served

Summer Day care – (8AM-5PM) 90% of the facility is used for this population's programs during Summer

Adult Under 55 Program – Scheduled seasonally - late afternoons and evenings except exercise room is available after lunch

Senior Programs – Scheduled from 9 AM to 1 PM except in Summer. *Senior programs extremely limited during Summertimelimited to exercise and one room for Meals on Wheels*

Adult Exercise Programs – Seniorcise! – *15 years strong!*

Meets 3x a week w/ average daily attendance @ 45

Meals-on-Wheels lunch location & Austin Food Pantry monthly distribution site

WE ARE GETTING CRAMPED!!!

Program Participants by Year		2019	2020	2021	2022	2023
Youth Programs	10-week camps (June thru August)	187	-	20	48	100
	After-School & Holiday Camps	120	64		120	128
	Youth Sports	233			89	271
	NEW Youth Clubs (5)				207	249
Totals		540	64	20	464	748
Teen Programs	Teen After-School /Drop-In (August-May)	34	27		17	31
	Teen Summer Camp (May-August)	20		10	12	12
	NEW Teen Clubs (4)					58
Totals		54	27	10	29	101
Adult Programming	Adult/Walk-ins - Fitness Room, Open gym, Mix-Fit, Pickleball, Volleyball	82		31	28	94
	Totals	82	0	31	28	94
Senior Program	Seniorcize, Tai Chi, Bible Studies, Ping Pong Crocheting/Knitting, Art class, Dance, Sewing	94	59	15-22	22	66
	Totals	94	59	0	22	66

Youth and Teen Program participation has significantly increased over pre-pandemic numbers

DURING SUMMER
Senior Enrichment programs are on hold

Space is only guaranteed available for Seniors weekdays, prior to 1PM during school year

Youth participation is 161% of pre-pandemic attendance. Teen attendance is double the pre-pandemic numbers



Council District

4

Council District Demographic Profiles

City of Austin
Planning Department
Strategic Data Initiatives

Population

94,936
2020 Census
population**

4%
Veterans*

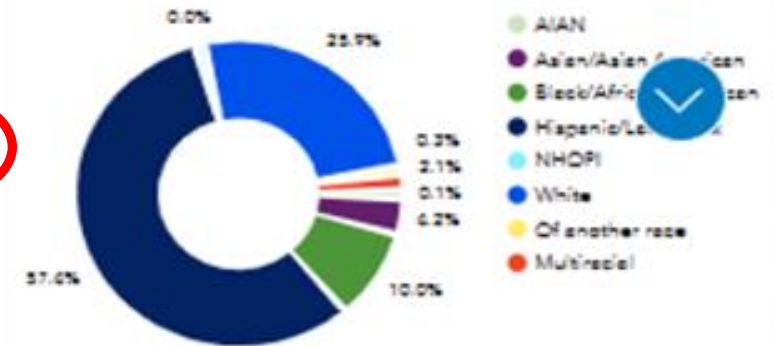
32.8
Median age
(years)*

8%
65 and over*

32%
Immigrants*

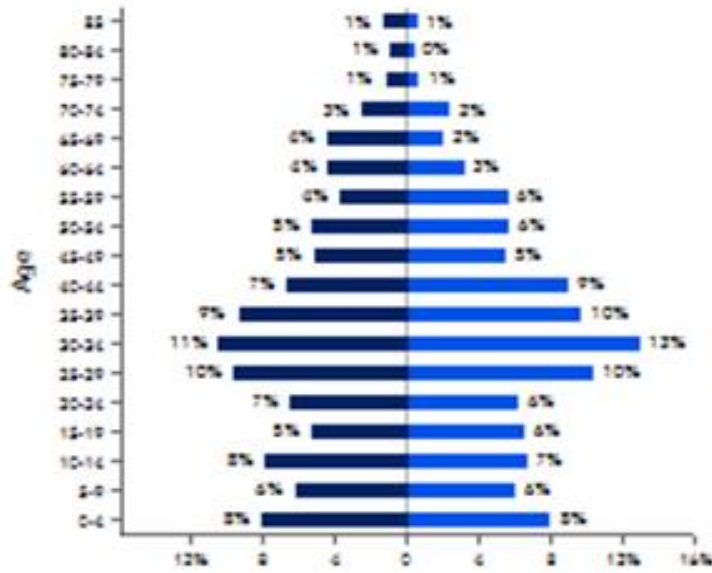
25%
Under 18*

Population by Race/Ethnicity (2021 ACS 5Y)



Population by Age (2021 ACS 5Y)

Female Male



Percentage of Population by Age for each Sex

Note: The U.S. Census Bureau asks a binary sex question in surveys. Therefore, these data may not represent people who identify as non-binary.

Income

\$52,797
Median Household
Income*

\$54,460
Median Family
Income*

74%
Population with
Low to Moderate
Income**

Households

38,264
Total households*

2.6
Avg. household
size*

20,970
Total families*

30%
Households with at
least one person under
18*

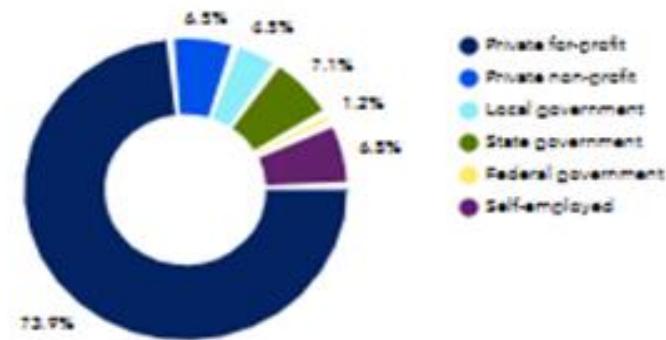
32%
Living alone (1-person
households)*

Employees

4.1%
Unemployment
Rate*

46,536
Total
Employees*

Percent of Employees by Sector (2021 ACS 5Y)



Education

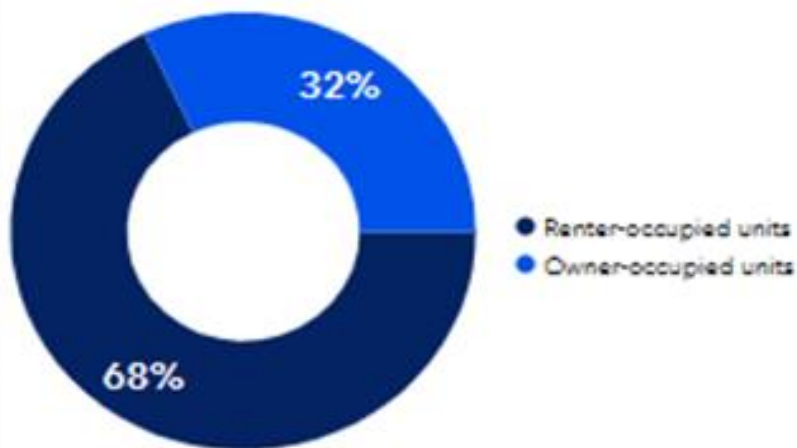
77%
Have a high school
diploma or
equivalent*

31%
Have a bachelor's
degree or higher*

Housing Costs



Housing Occupancy Status (2021 ACS 5Y)



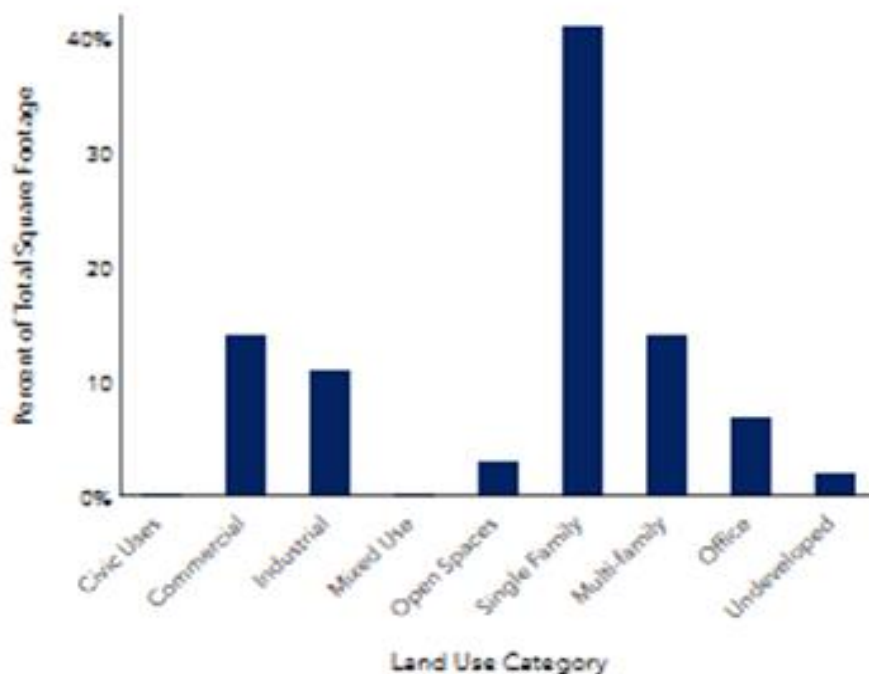
Population Density



Marginalized Communities



Selected Land Use Categories++



Commute



Language

Number of Speakers*

Spanish 40,810

Asian and Pacific Island languages: 1,844

Other Indo-European languages: 2,145

1The most common Other Asian languages spoken in Austin include (listed in order of most spoken) Thai, Lao, and other Tai-Kadai languages; Japanese; Hawaiian, Samoan, and other languages; and Khmer or Cambodian.

2The most common Other Indo-European languages spoken in Austin include (listed in order of most spoken): south Asian languages such as Hindi, Telugu, Nepali, Bengali, and Punjabi; Persian, including Urdu; Portuguese, Yiddish, Italian, Greek, and Armenian.

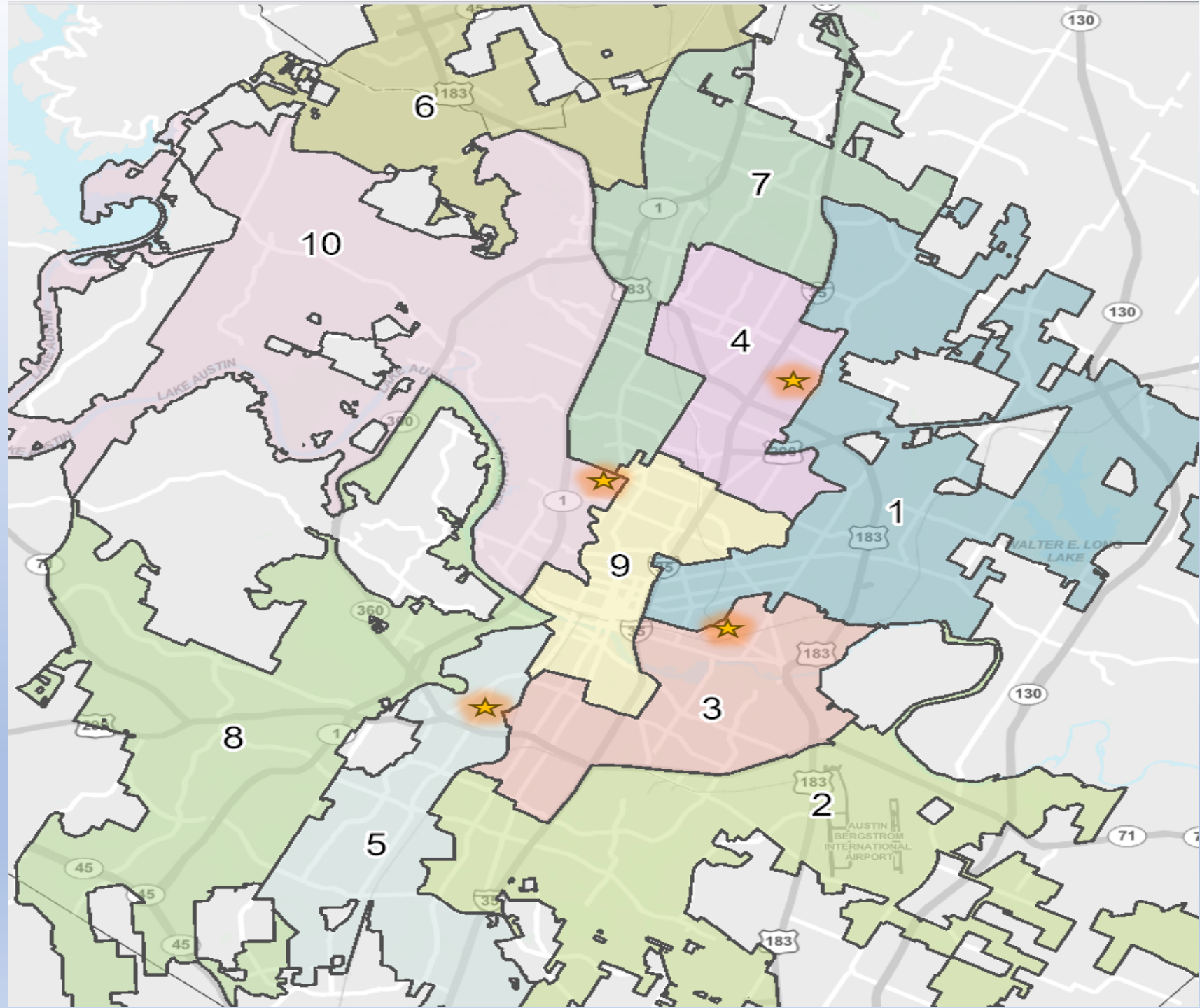
District 4 Demographic Profile

Fact and Figure Takeaway

- Senior (65+) total population -- 8% of 94,936 = **7,595 Seniors**
- Senior (65+) immigrant population -- 32% of 7,595 = **2,430 Immigrant Seniors**
- Senior (65+) population -- 32% of 7,595 = **2430 Seniors living in poverty**
- Seniors (65+) living low-moderate income --74% of 7595 = **5,620 Low Income seniors**
- Seniors (65+) living alone – 22% of 7595 = **1671 Seniors live alone**

Locations of Seniors Only Centers & GGRC

Following photos compare the 3 Senior Activity Centers (SASAC, LSAC & CGSAC) amenities with those of Gus Garcia Recreation Center facilities.



Currently ONLY 3 Seniors-Only Centers for Austin

- **South Austin Senior Activity center (SASAC)3911 Menchaca Rd.**
 - Functions as a *special use resource facility* for persons 50 years of age and older.
 - The 12,311-square-foot facility includes rooms for ceramics, billiards, exercise, meetings, arts and crafts, cooking and other multipurpose programs as well as a community flower garden.
- **Lamar Senior Activity Center (LSAC)...2874 Shoal Crest Avenue 78705**
 - The Lamar Senior Activity Center offers instructed classes, health and wellness programs, educational seminars, workshops, trips, dances, volunteer opportunities, support groups, special events, meeting space and private rental space. Includes an extensive lending library.
- **Conley-Guerrero Senior Center (CGSAC)....808 Nile St. Austin 78702**
 - Functions as a *recreation and special use resource facility* for persons 50 years of age and older.
 - The 26,000 square foot facility includes a multi-purpose room for large groups and special events, fitness center, meeting rooms and a courtyard for members to enjoy the outdoors.

GGRC Lobby



Main lobby is normally crowded during summer

Only 2 small round tables available for seating

Picnic styled tables ARE NOT Senior friendly seating



Other Centers' Lobbies



SASAC



LSAC

CGSAC



Gus Garcia Center

Limited Game areas



Air Hockey table squeezed between two lobby tables.

Ping Pong tables stored away to make room for summer program.

Separate Game & Puzzle Areas for other centers

SASAC –

Game & Puzzle tables combined
with Technical Center



CGSAC – Game and Puzzle Tables
Active Pinochle group



LSAC – Active Bridge Club



Game Rooms for other centers

SASAC & CGSAC -

Feature Billiards, Ping Pong
and Foosball



Gymnasium

Only room large enough to
accommodate Seniorcize class

Longest running Seniorcize class of all PARD centers



Meets 3 times weekly
number of participants steadily increasing.

Average Daily Attendance ~45
Pre-pandemic attendance ~55-60
Attendee age range 62-97

Large Multi-Purpose
Rooms for other
centers



LSAC –
Large open exercise and meeting room



CGSAC-
(Open) Partition wall between lunch & Exercise rooms



SASAC –
(Closed) Partition wall between lunch & exercise rooms

Gus Garcia Room serving youth needs

During summer **ALL** Senior enrichment classes are put on hold to support day care & youth programs.



Other centers' Art & Craft Spaces



CGSAC & SASAC
include space for pottery kilns



Gus Garcia Center currently has 3 computers for public use in the hall hidden by the people here.



Situation not conducive to offering computer support

Other centers' Technology Centers



CGSAC & SASAC –

Training room & General use computer areas

When comparing our facility amenities with those of existing Senior Activity Centers, we see the disparity between facilities and spaces available to seniors.

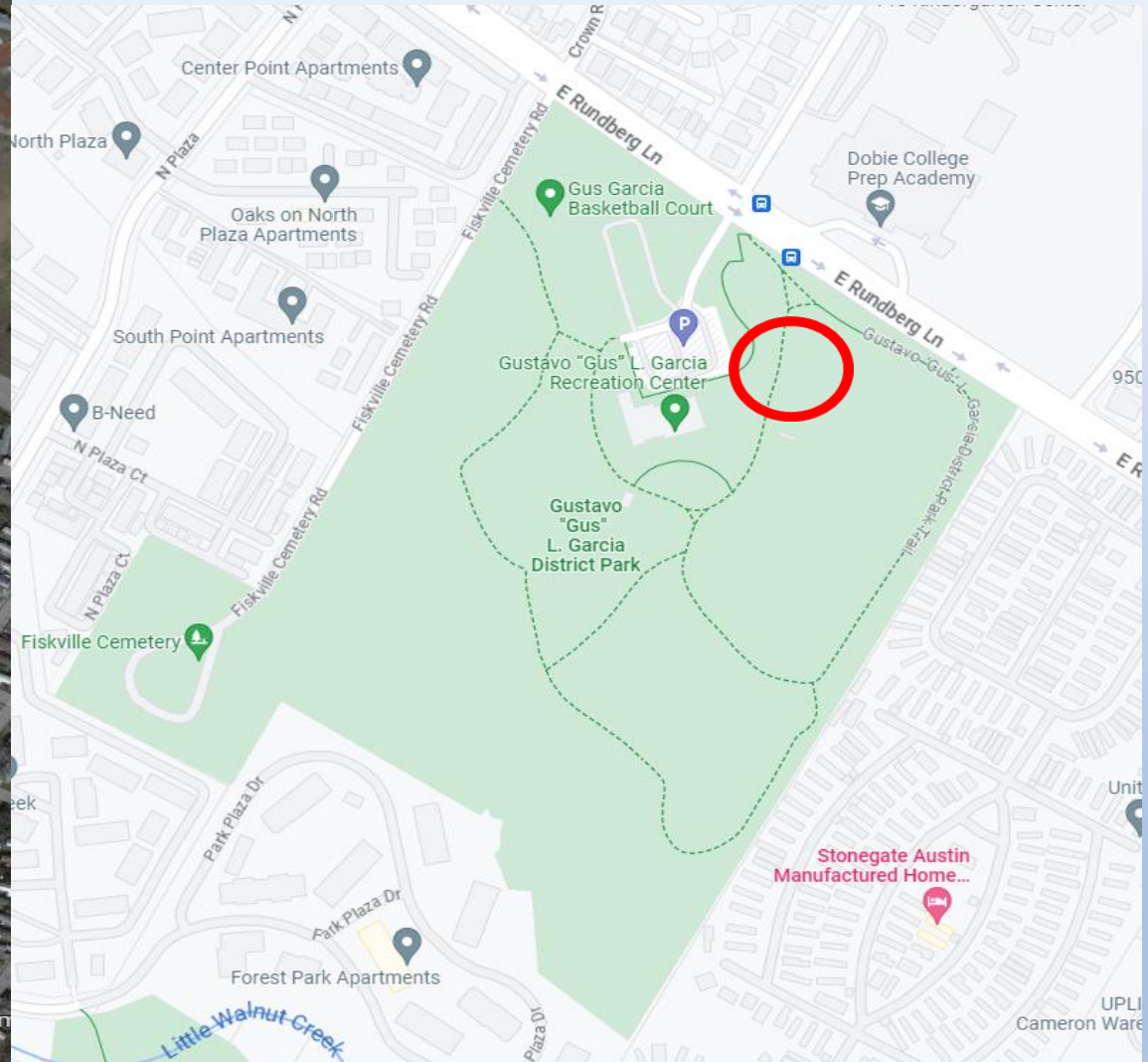
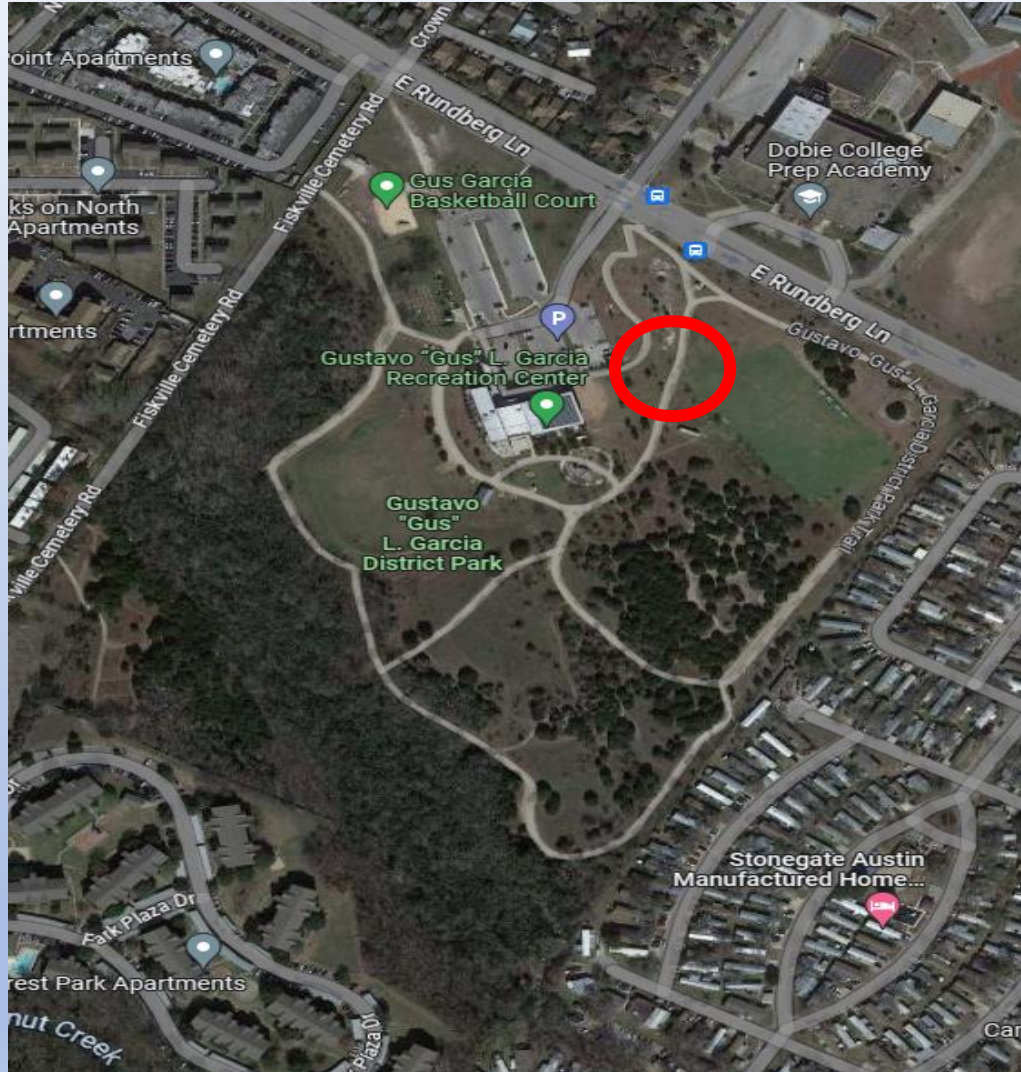
Gus Garcia Seniors Need

- Permanent spaces for senior activities.
- Full day space availability for senior community enrichment programs.
- Rooms with secured storage for materials/supplies.

Senior facilities provide a space to enjoy activities safely and socialize comfortably. Easy access to health & wellness classes, meal & nutrition plans and programs that teach participants how to manage and delay the onset of chronic disease.

Most of all, Senior Activity Centers provide a place for friendship and companionship, especially for those 22% of District 4 Seniors who live alone.

We Have The Space



Aerial view of complete Gus Garcia Park Land – One possible location of new Senior's Building before any soil testing, but others could be considered.

We Have The Space We Have The Need

Gus Garcia seniors respectfully request a new Senior Activity Building, of approximately 20,000 square-feet, be constructed on site of Gus Garcia Park