

A nighttime photograph of a city skyline. In the foreground, a wide, empty street is illuminated by warm yellow streetlights. On the left, a tall, slender skyscraper with a curved facade is lit with blue light. To its right is a building with a distinctive stepped, pyramid-like structure. Further right, a large, modern building with a grid of arched windows is brightly lit. In the background, the Texas State Capitol building is visible in the distance. The sky is dark, and the overall scene is a vibrant display of urban architecture at night.

Joint Music & Arts Commissions Urban Core Land Use Working Group

Members

Lauryn Gould, Music Commissioner

Acia Gray, Arts Commissioner

Monica Maldonado, Arts Commissioner

Anne-Charlotte Patterson, Music Commission vice-chair

Heidi Schmalbach, Arts Commission vice-chair

Mark Gilbert, Arup Development Consultancy

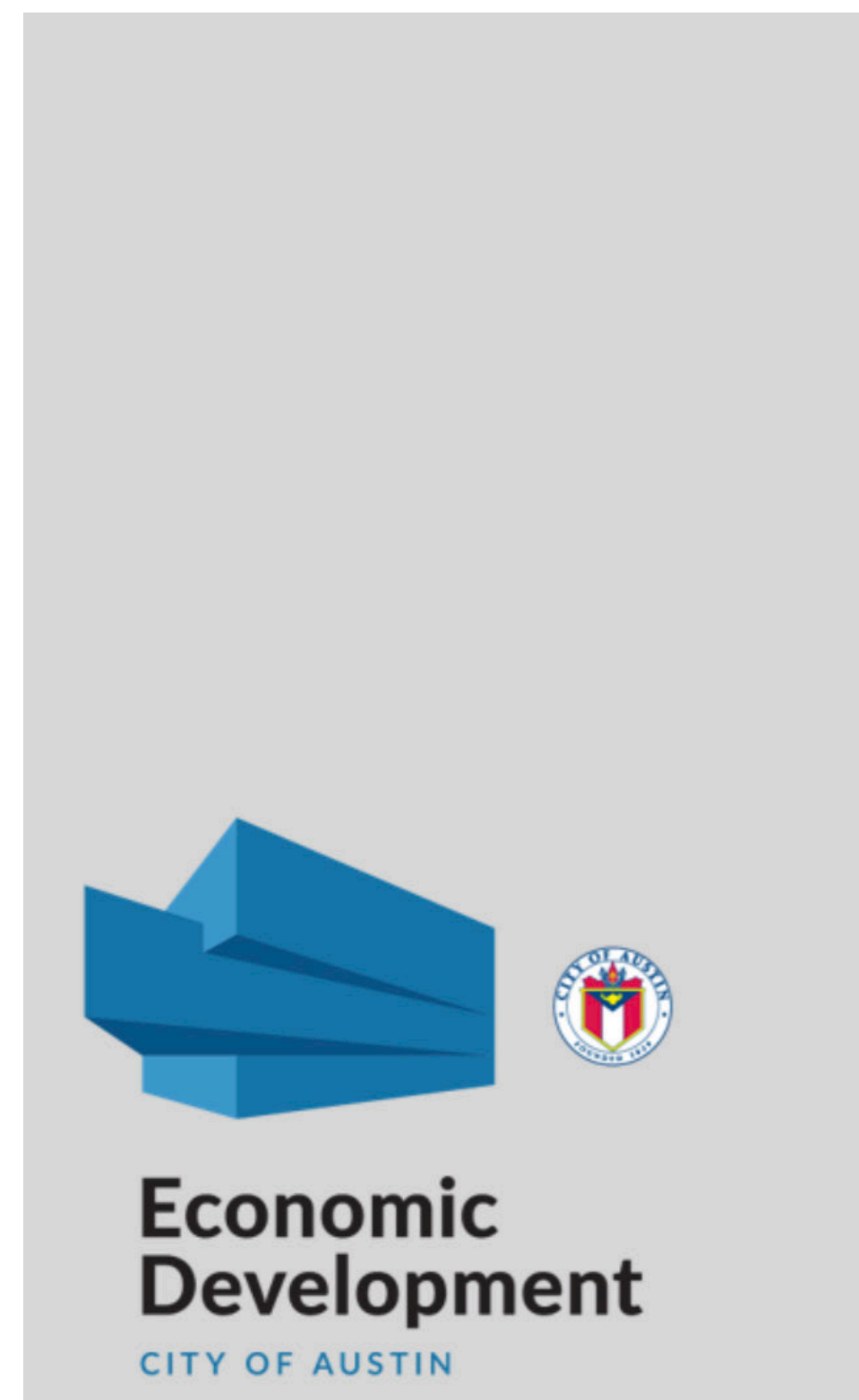
Gian Michael Piano, Presidium Real Estate

Stephani Stanley, Kadence Twelve Productions

Ryan Steglich, Steglich Consulting, Here Today Gone Tomorrow

Live Music Venue & Creative Space Amendments to Land Development Code

Letters of Support



Live Music Venue and
Creative Space
Definitions

May 3, 20

Live Music Venue & Creative Space Amendments to Land Development Code

Phase 1 *current*

**Zoning definitions for live music venues,
creative spaces, live-work spaces**

Phase 2

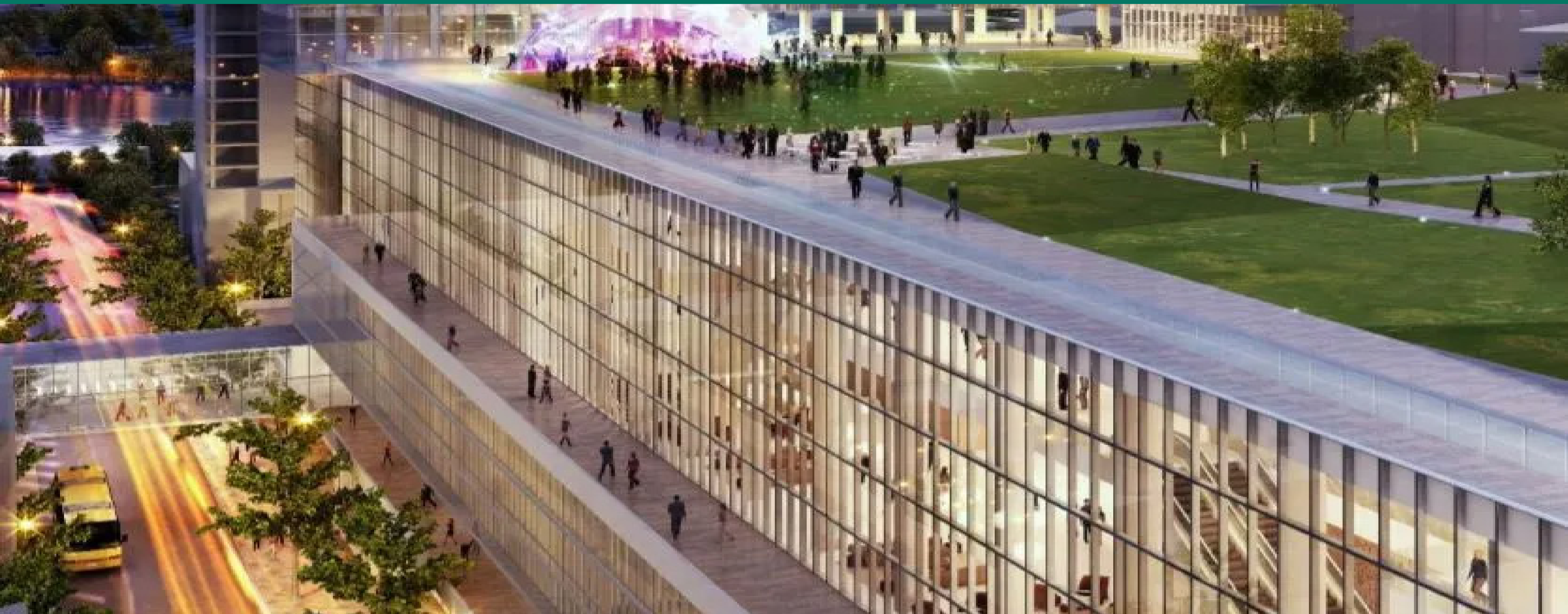
Designation of Cultural Districts

Phase 3

Financial Incentive Programs



Convention Center Expansion



Convention Center Expansion

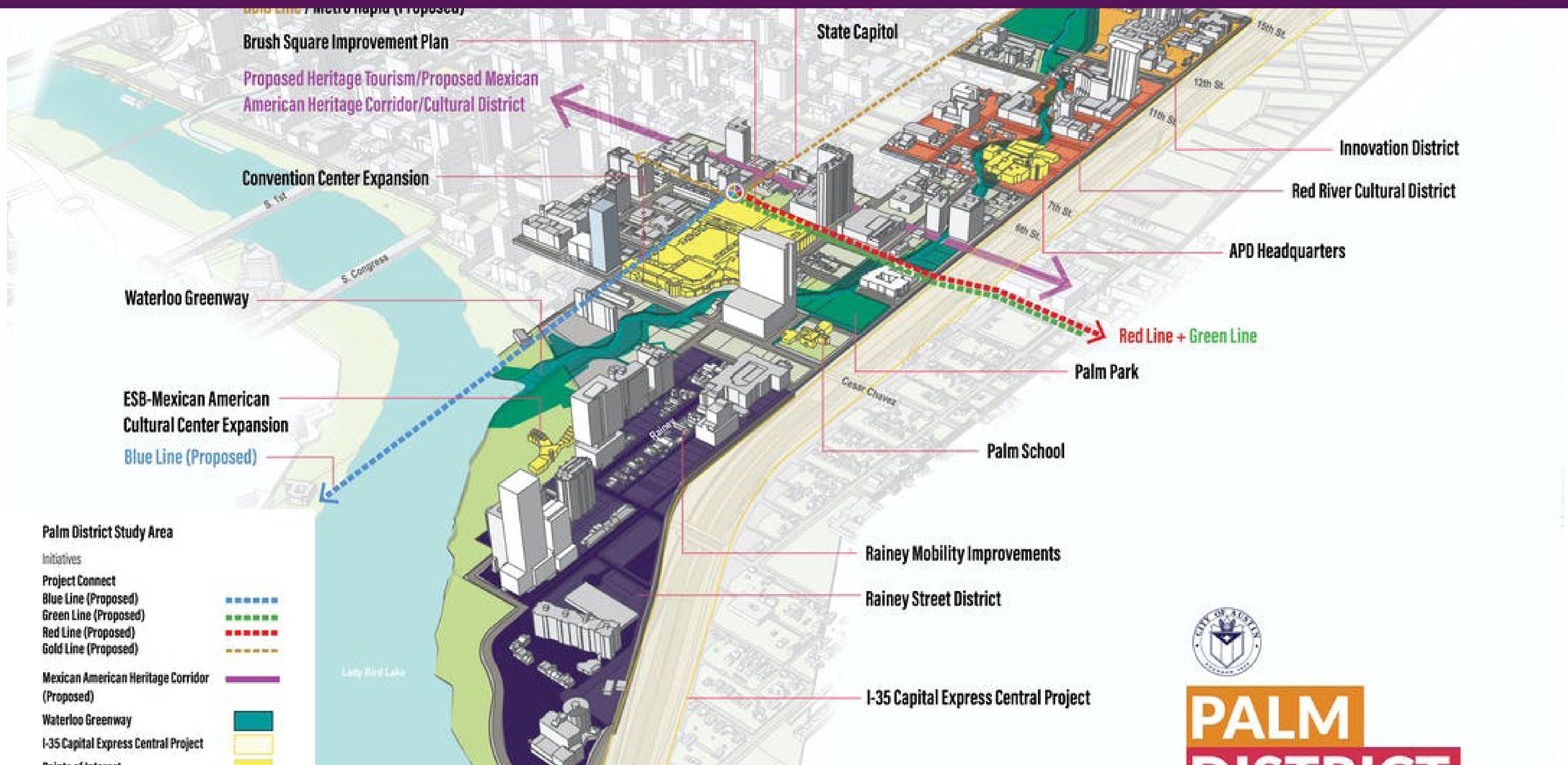
Positioning/Requests

- **HOT-impact projections related to multi-year closure**
- **Citizen advisory board**
- **Intentional support for Live Music, Arts, and inclusion of public benefits like green space**

6th Street Redevelopment



Palm District Planning



I-35 Expansion

If 'cap and stitch' comes to I-35, what should be built
busiest highway?

[Email](#) [Share](#) [Share](#) [Tweet](#) [Share Article](#) | [Print](#) [Order Reprints](#)



KUT 90.5


Austin's NPR Station

KUT
Climate One

NEXT

Transportation

Austin's I-35 plans revised to include new cap and a \$25 million boardwalk

An aerial photograph of Austin, Texas, showing the city skyline with several tall skyscrapers, including the Frost Tower. In the foreground, the I-35 highway is visible, with multiple lanes of traffic. The highway runs parallel to a river, and there are green spaces and smaller buildings along the riverbank. The sky is clear and blue.