

# MoKan Trail: N. Pleasant Valley Rd to Springdale Rd

August 7<sup>th</sup>, 2023



CAPITAL DELIVERY  
SERVICES

*"Effectively and Efficiently Deliver Quality Projects with the Concept of Speed"*



# AGENDA

---

- Project Background
- Preliminary Engineering Report
  - Evaluation Factors
  - Constraints
- Outreach Summary
- Recommendations
  - Segments 1 - 6
- Next Steps
- Contact



CAPITAL DELIVERY  
SERVICES

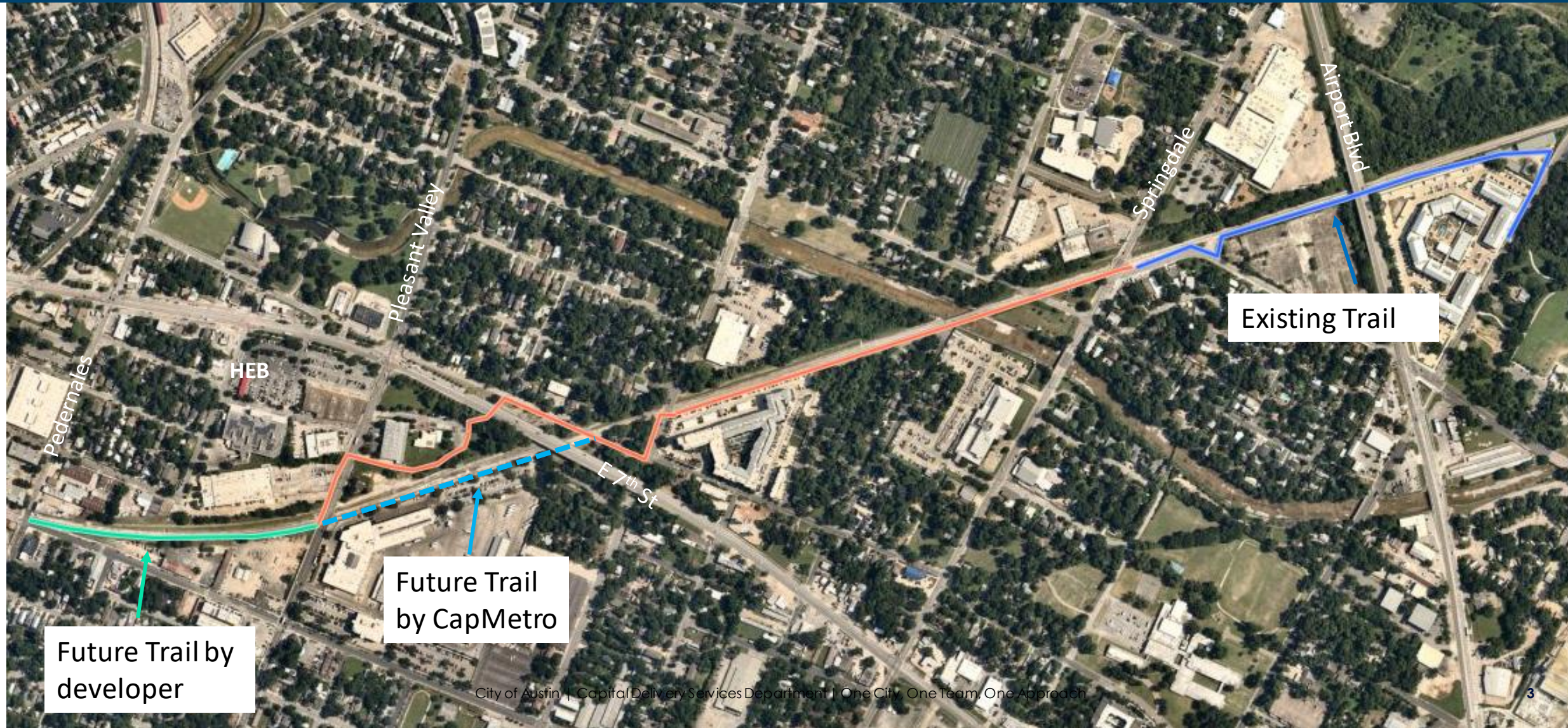
*“Effectively and Efficiently Deliver Quality Projects with the Concept of Speed”*



# MoKan Trail – Project Background



CAPITAL DELIVERY  
SERVICES





# MoKan Trail – Project Background



CAPITAL DELIVERY  
SERVICES

## Project Scope

- 12ft concrete trail, and on-street bikeways
- .75 miles from Springdale to Pleasant Valley
- Bridge crossing of Boggy Creek
- Enhanced safety at street crossings for people walking, biking, rolling
- Connectivity to transit stations, parks, schools, grocery stores, and Cepeda Branch Library

## Funding

- 2020 Bond
- \$1M Community Project Federal Funding
- Cost share portions with Sidewalks and Special Projects



## Evaluation Criteria

- Public Feedback
- Cultural Assessment
- Community Impact
- Cost
- Topography & Accessibility
- Tree Impacts
- Connectivity
- Utilities
- Property Ownership
- Floodplain & Drainage

# MoKan Trail – Technical Report



CAPITAL DELIVERY  
SERVICES

## Constraints

- CapMetro ROW
- Distance to railroad track
- Railroad crossing arms
- Private Properties
- Boggy Creek Crossing
- Austin Energy utilities
- Drainage
- Need for improving roadway and track crossings
- Future development schedules

## Coordination

- CapMetro
- Austin Energy
- Active Transportation and Street Design
- Sidewalks and Special Projects
- Austin Public Library

**Cost Estimate - \$8,916,000**

# MoKan Trail – Outreach Summary



CAPITAL DELIVERY  
SERVICES

## Public Outreach

- Virtual Open House and Survey – March 20, 2023–April 23, 2023
- 4 tabling events; Flitch Coffee, Cepeda Branch Library, Govalle Park
- Nearly 80 community members

## Feedback Themes

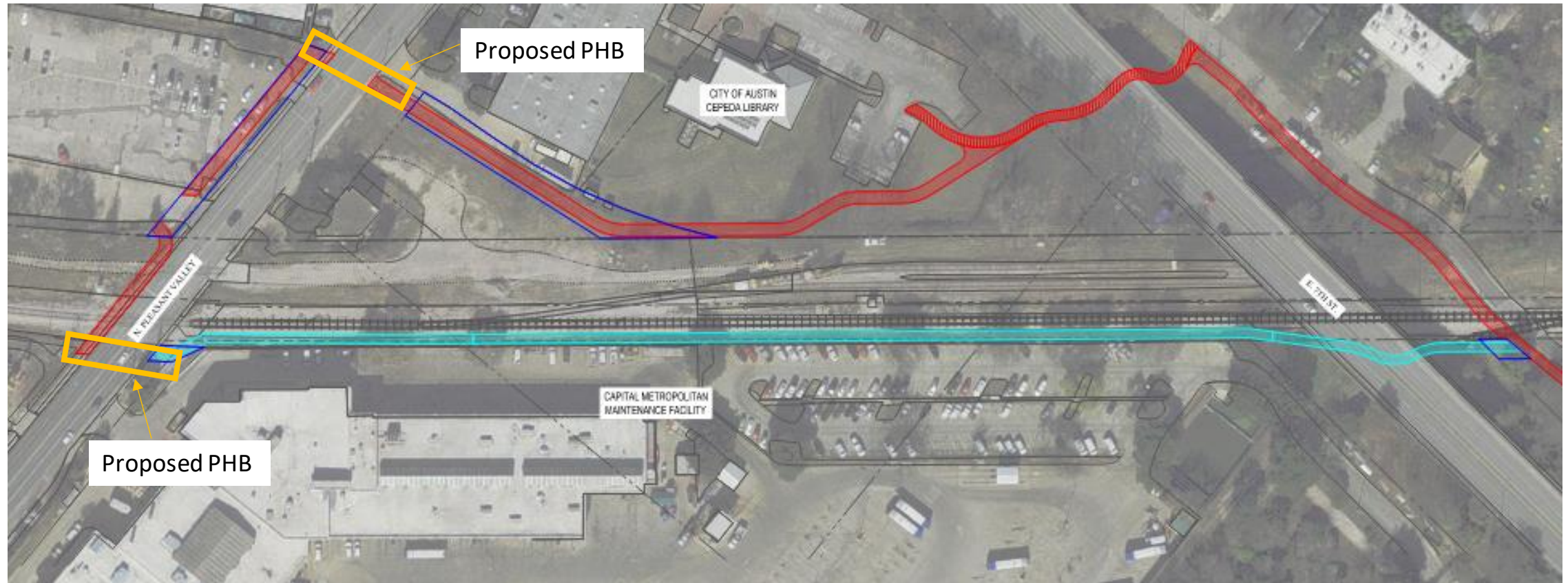
- Connectivity
- Street Crossings
- Sellers Street Design
- Gonzales Street Design



# MoKan Trail – Recommendations



CAPITAL DELIVERY  
SERVICES





# MoKan Trail – Section 1 – Pleasant Valley to Gonzales



CAPITAL DELIVERY  
SERVICES

## Design Features

- Partnering with Austin Public Library, Sidewalks & Special Projects (SSPD), and CapMetro
- Direct connection to Cepeda Branch Library from Gonzales Street
- Lighting including under 7th Street bridge
- Crossing Pleasant Valley – working with TPW Signals group to install 2 PHBs
- Discussing options with CapMetro for a near term connection

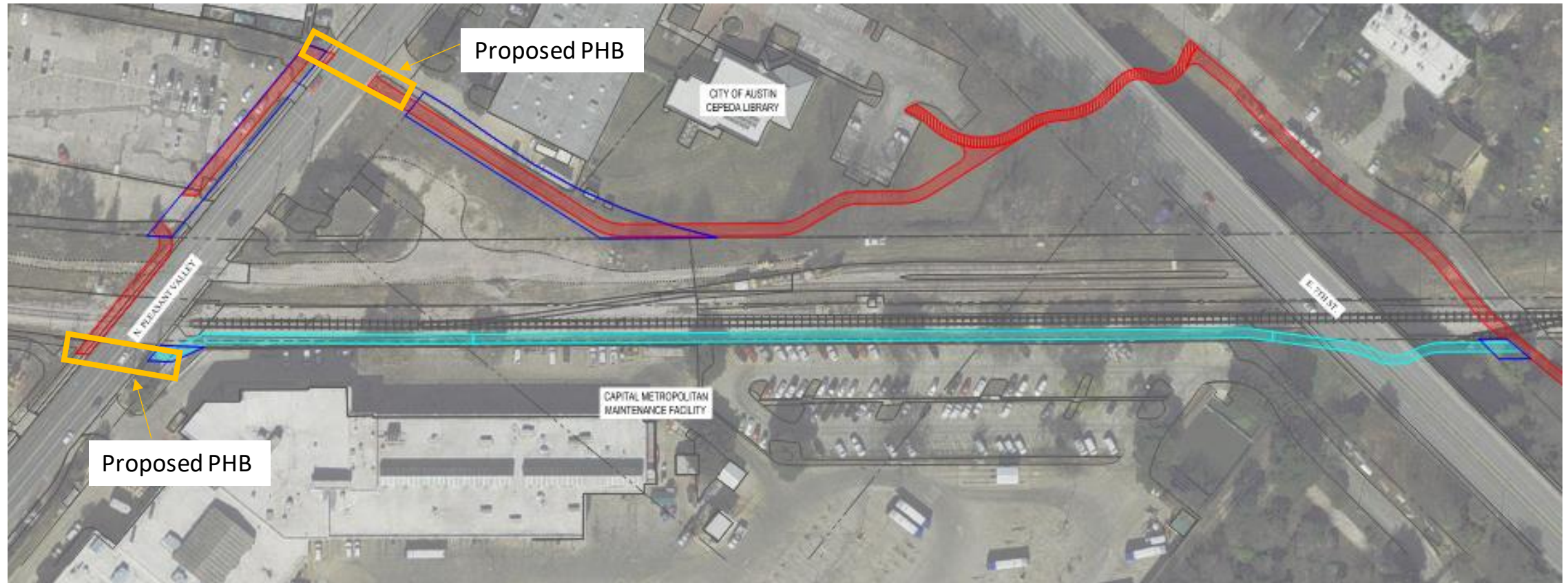
## Constraints

- Coordinating with CapMetro development timeline and ROW

# MoKan Trail – Section 1 – Pleasant Valley to Gonzales



CAPITAL DELIVERY  
SERVICES





# MoKan Trail – Section 2 – Gonzales St



CAPITAL DELIVERY  
SERVICES

## Design Features

- Partnering with SSPD
- 12-foot wide shared use path from Tillery Street to Cepeda Branch Library Trail
- Coordinating with Austin Energy to install street lighting along Gonzales that will provide lighting to the trail

## Constraints

- Single family home on the corner of Gonzales and Tillery
- Right-of-way



Gonzales Street Looking North



# MoKan Trail – Section 2 – Gonzales St



CAPITAL DELIVERY  
SERVICES



Gonzales Street Looking South



Gonzales Street at E 7th Street Bridge



# MoKan Trail – Section 2 – Tillery



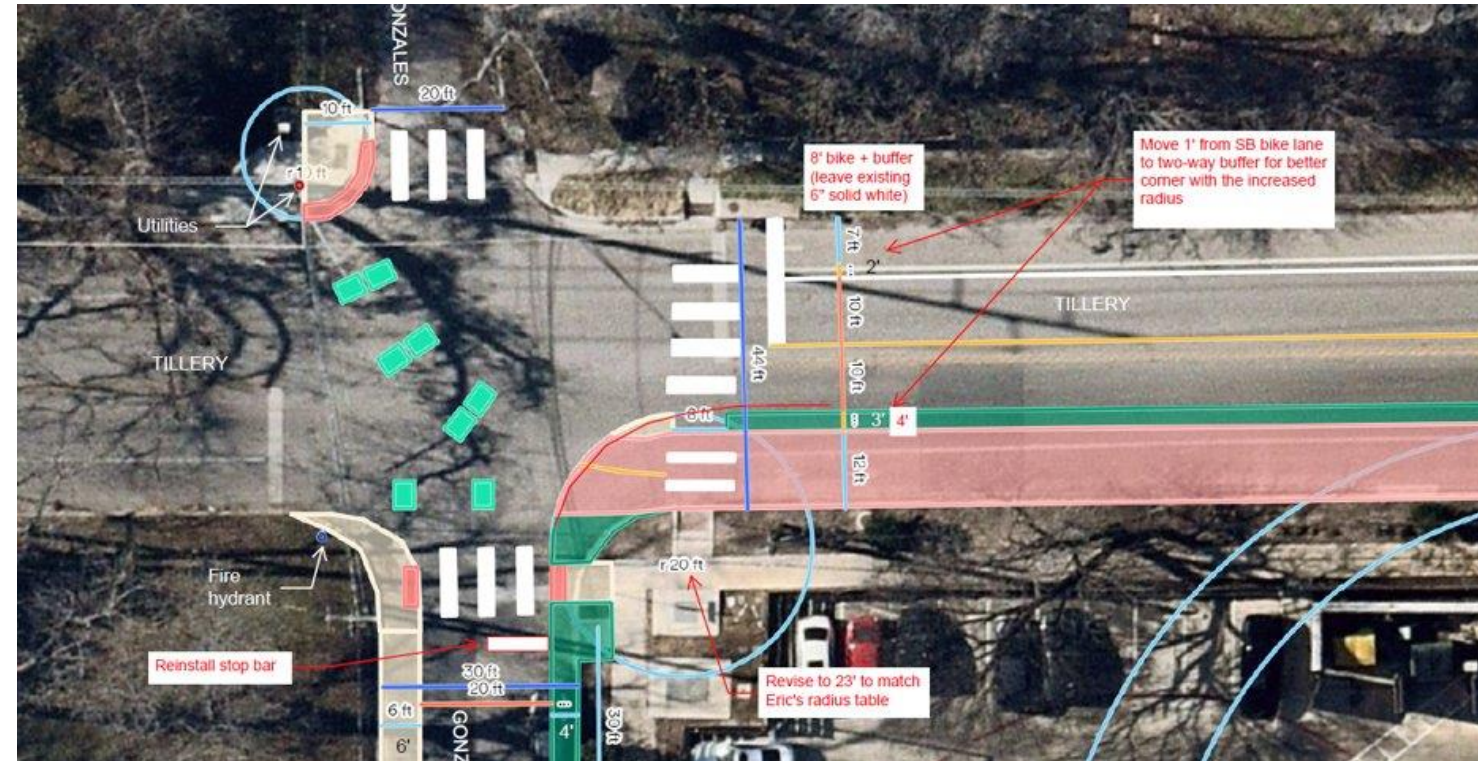
CAPITAL DELIVERY  
SERVICES

## Design Features

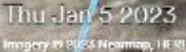
- Partnering with ATSD and SSPD
- Protected two-way bike lane on the south side of Tillery and narrowing of the car lanes
- Bike lane on North side of Tillery will remain
- Use existing sidewalks along Tillery

## Constraints

- Existing Trees
- Rail crossing arm
- Grade changes from Tillery to the trail behind the Guthrie









# MoKan Trail – Section 3 – The Guthrie



CAPITAL DELIVERY  
SERVICES

## Design Features

- Existing 7.5' wide trail – extending the trail out 5' to 'bubble' out around existing AE transmission poles
- Coordinating with AE
- Coordinating with CapMetro for ROW use

## Constraints

- Transmission poles
- Fencing on both sides of the trail



Tillery Street Looking East

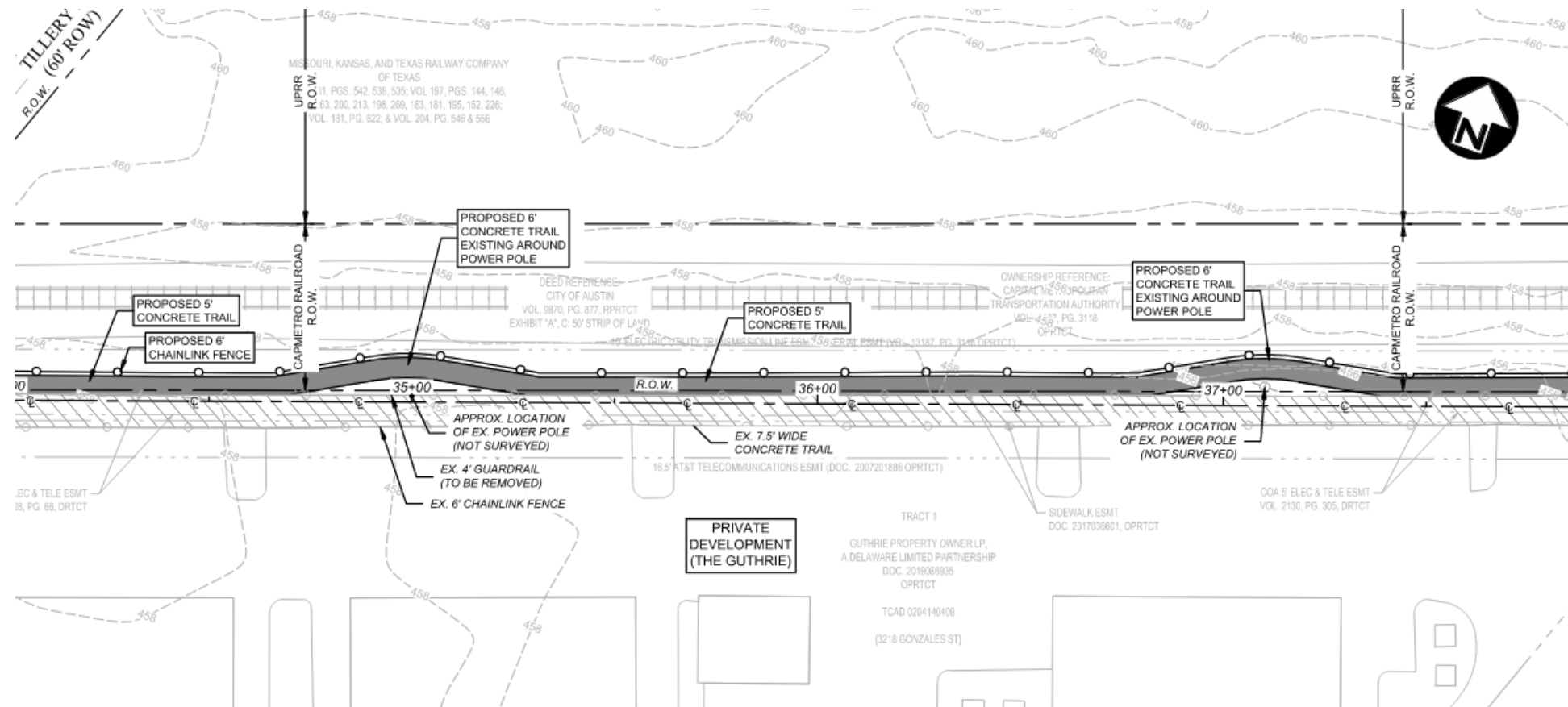
# MoKan Trail – Section 3 – The Guthrie



CAPITAL DELIVERY  
SERVICES

## Proposed Design

- Existing 7.5' wide trail – extending the trail out 6' to 'bubble' out around existing AE transmission poles





# MoKan Trail – Section 4 – Sellers St



CAPITAL DELIVERY  
SERVICES

## Design Features

- 6-foot wide sidewalk and neighborhood bikeways

## Constraints

- Street ROW must be able to accommodate emergency vehicles, Austin Resource Recovery trucks, and property access
- CapMetro ROW and AE Power poles

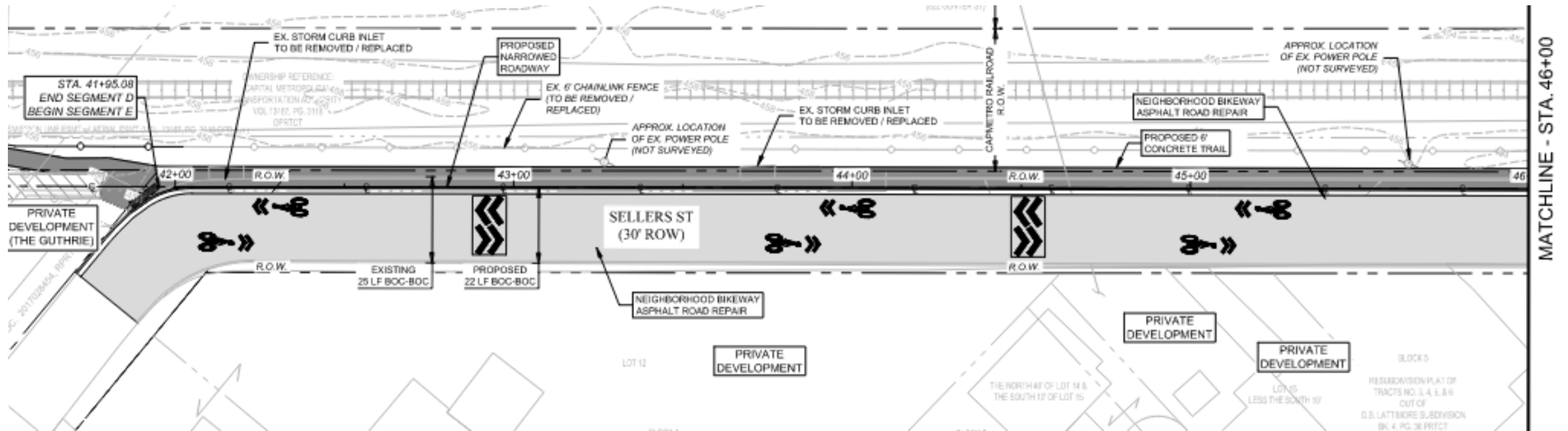


Sellers Street Looking East

# MoKan Trail – Section 4 – Sellers St



CAPITAL DELIVERY  
SERVICES





# MoKan Trail – Section 5 – Boggy Creek Bridge



CAPITAL DELIVERY  
SERVICES

## Proposed Design

- 14-ft wide, prefabricated bridge will span approximately 214-ft



Boggy Creek Crossing Looking East



Example of Proposed Bridge

# MoKan Trail – Section 6 – Boggy Creek to Bolm Rd



CAPITAL DELIVERY  
SERVICES

## Proposed Design

- Proposing PHB crossing at Springdale to Bolm
- Proposed raised crossing at Lyons Rd

## Constraints

- Easement acquisition from private property
- Austin Energy utilities
- Grades/drainage at CapMetro ROW



Lyons Road Looking East



# MoKan Trail – Section 6 – Boggy Creek to Bolm Rd



CAPITAL DELIVERY  
SERVICES





# MoKan Trail – Project Phasing



CAPITAL DELIVERY  
SERVICES





# MoKan Trail – Possible Near-Term Projects



CAPITAL DELIVERY  
SERVICES





# THANK YOU



CAPITAL DELIVERY  
SERVICES

## Contacts

Ana Seivert, Project Manager

[Ana.Seivert@austintexas.gov](mailto:Ana.Seivert@austintexas.gov)

Rachel Thomas, Project Coordinator

[Rachel.Thomas@austintexas.gov](mailto:Rachel.Thomas@austintexas.gov)

## Website

<https://www.austintexas.gov/MoKanTrail>





# MoKan Trail – Section 1 – Pleasant Valley to Gonzales



CAPITAL DELIVERY  
SERVICES





# MoKan Trail – Section 2 – Gonzales St



CAPITAL DELIVERY  
SERVICES

