

Water Conservation Quarterly Update

Kevin Kluge | August 15, 2023



Water Supply Update



Water Weekly

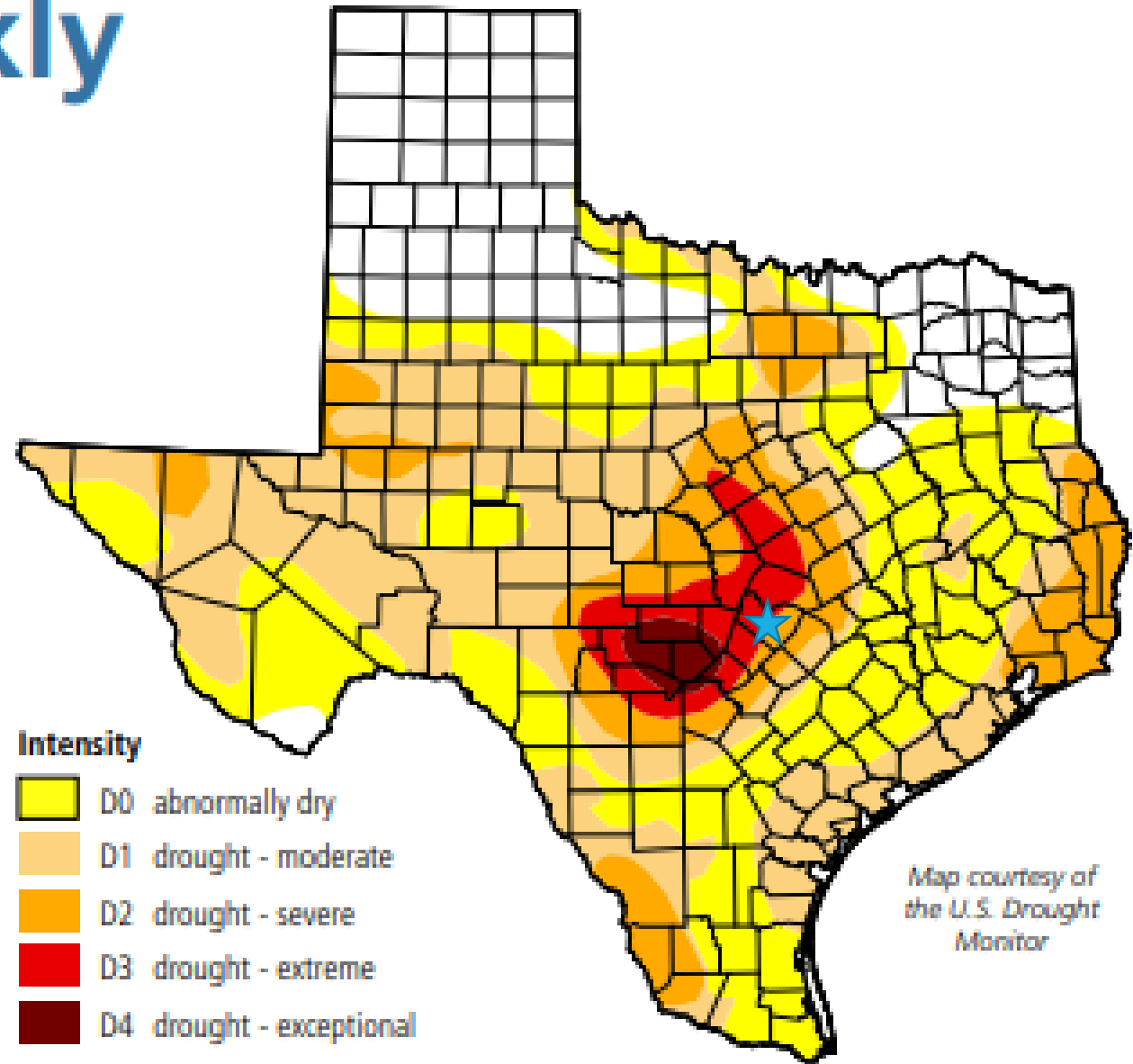
For the week of 07/31/23

Water conditions

The area of the state impacted by drought increased for the sixth consecutive week. Areas of West, Central, East, and South Texas experienced one class of drought degradation. A third of the state is abnormally dry and may transition to moderate drought in coming weeks.

Drought conditions

- 49% now
- 43% a week ago
- 55% three months ago
- 97% a year ago



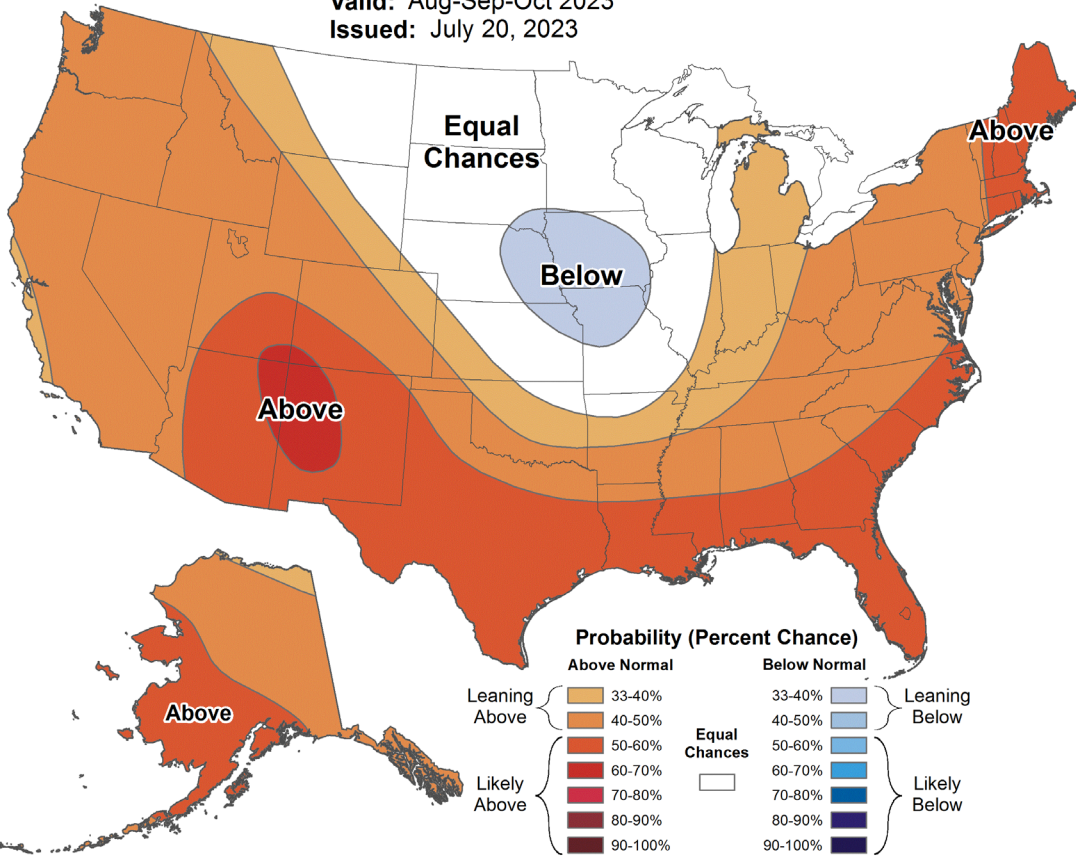
NOAA 3-Month Outlook: August - Oct



Seasonal Temperature Outlook



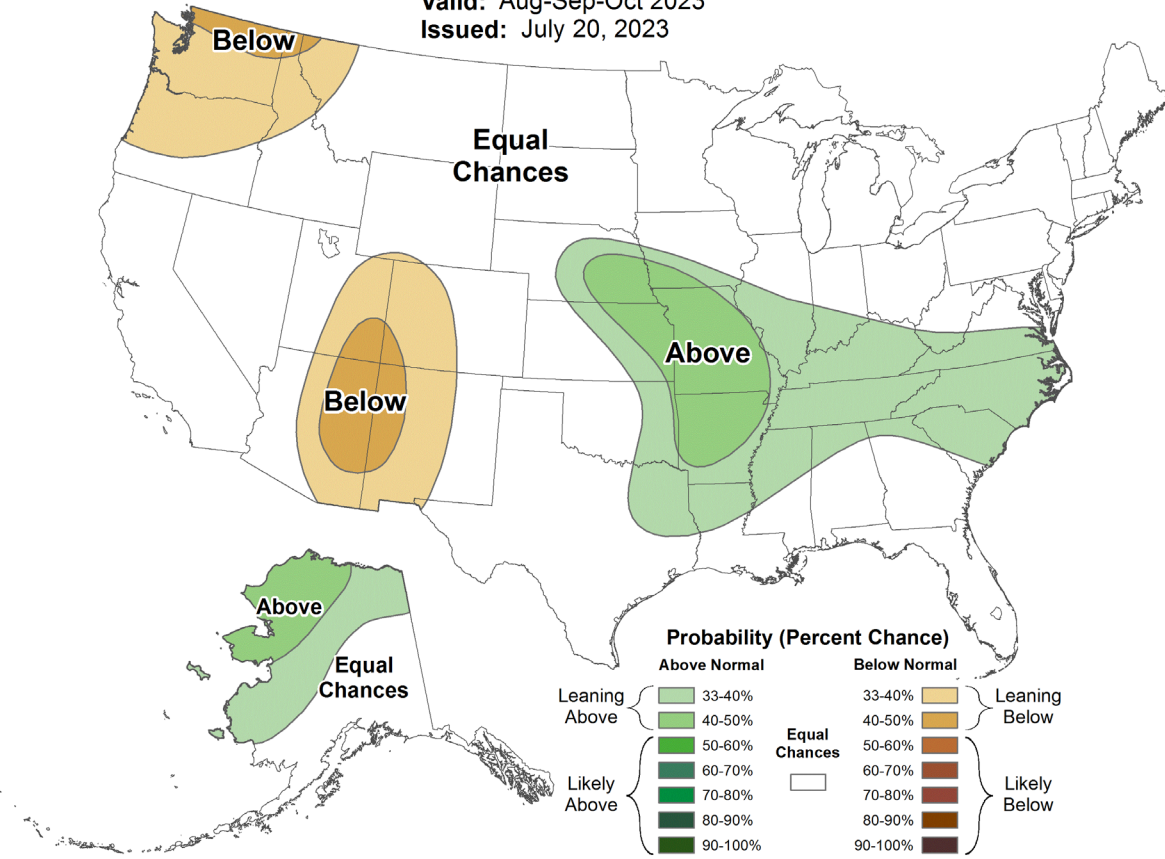
Valid: Aug-Sep-Oct 2023
Issued: July 20, 2023



Seasonal Precipitation Outlook



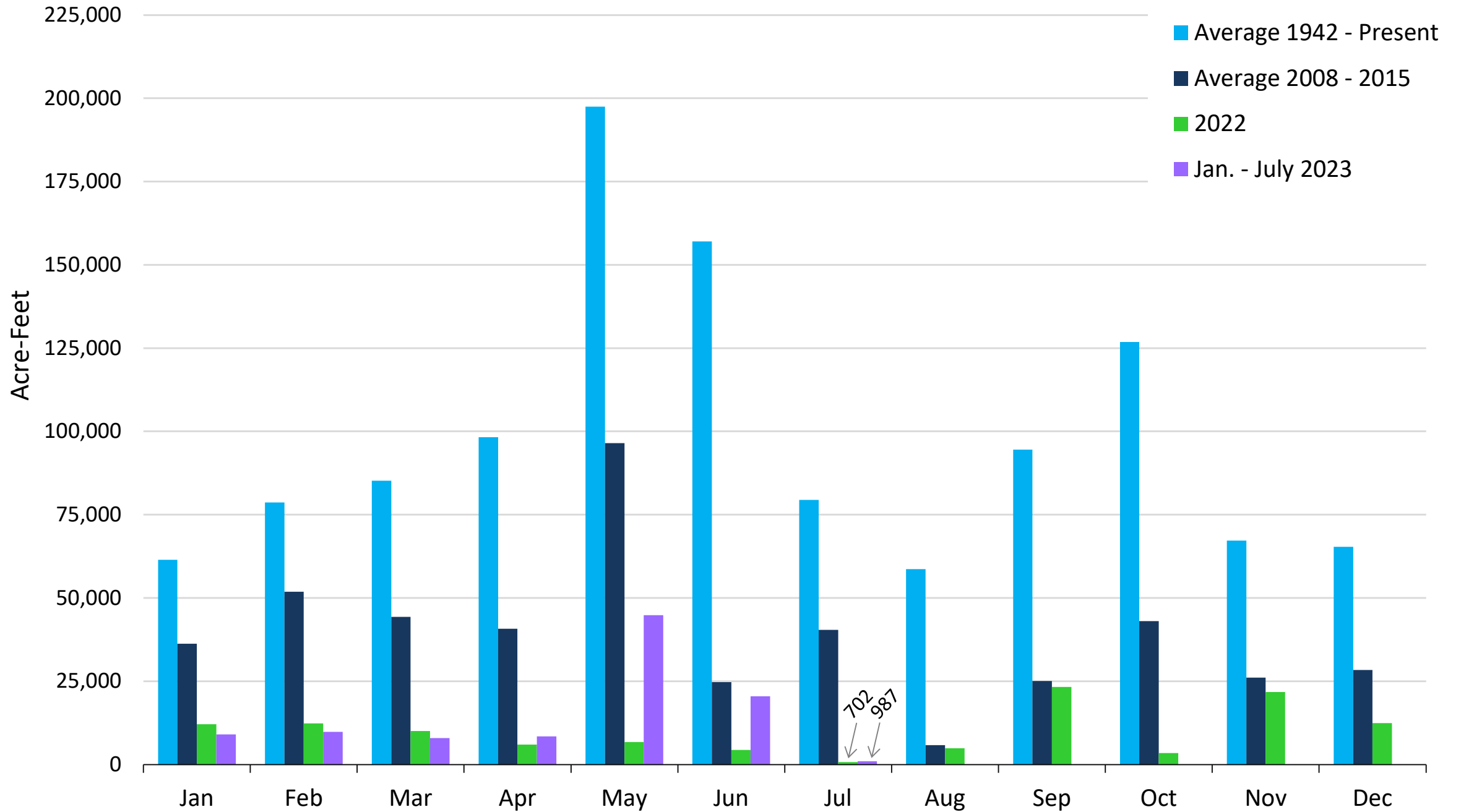
Valid: Aug-Sep-Oct 2023
Issued: July 20, 2023



The seasonal outlooks combine the effects of long-term trends, soil moisture, and, when appropriate, ENSO.

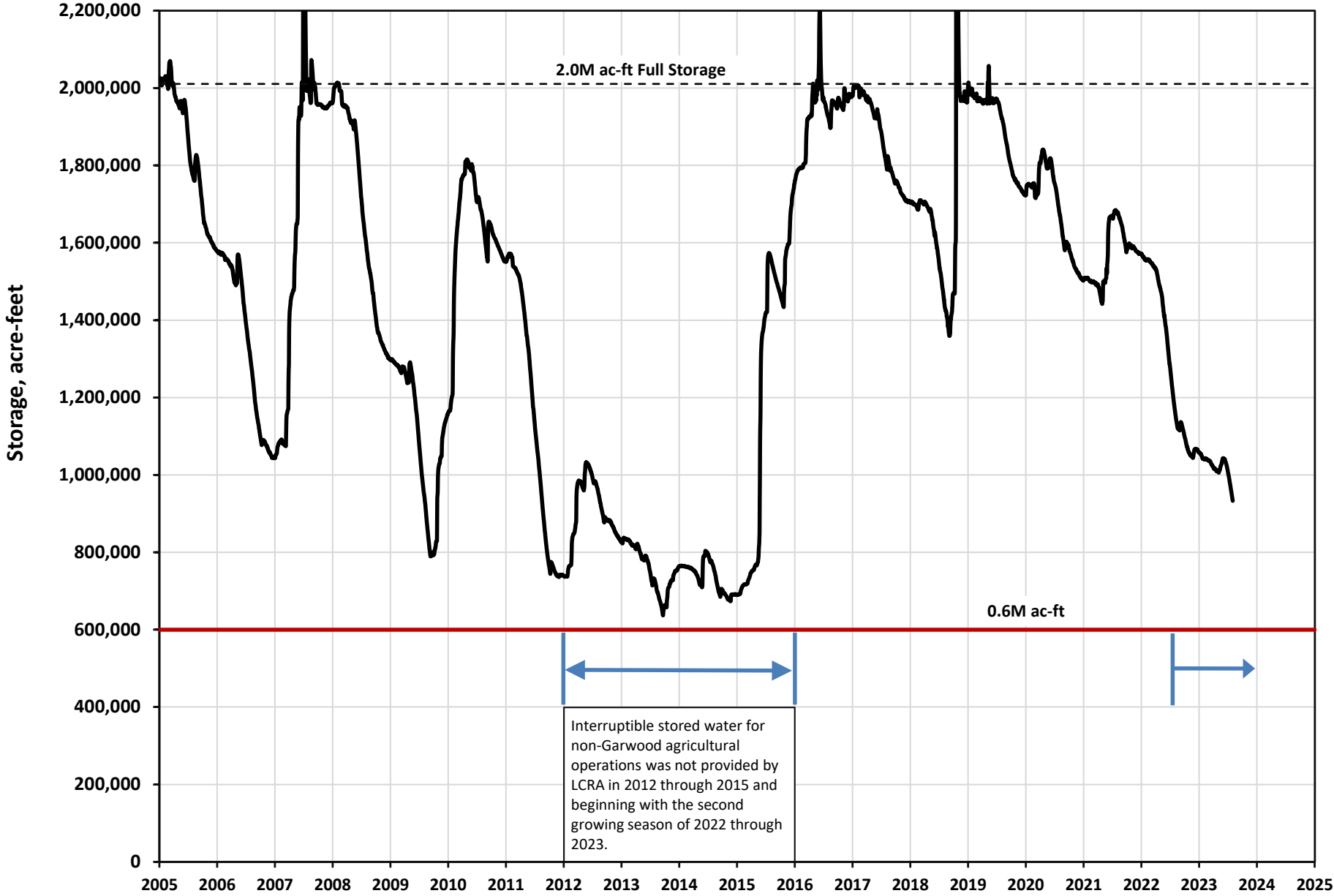


Highland Lakes Inflows

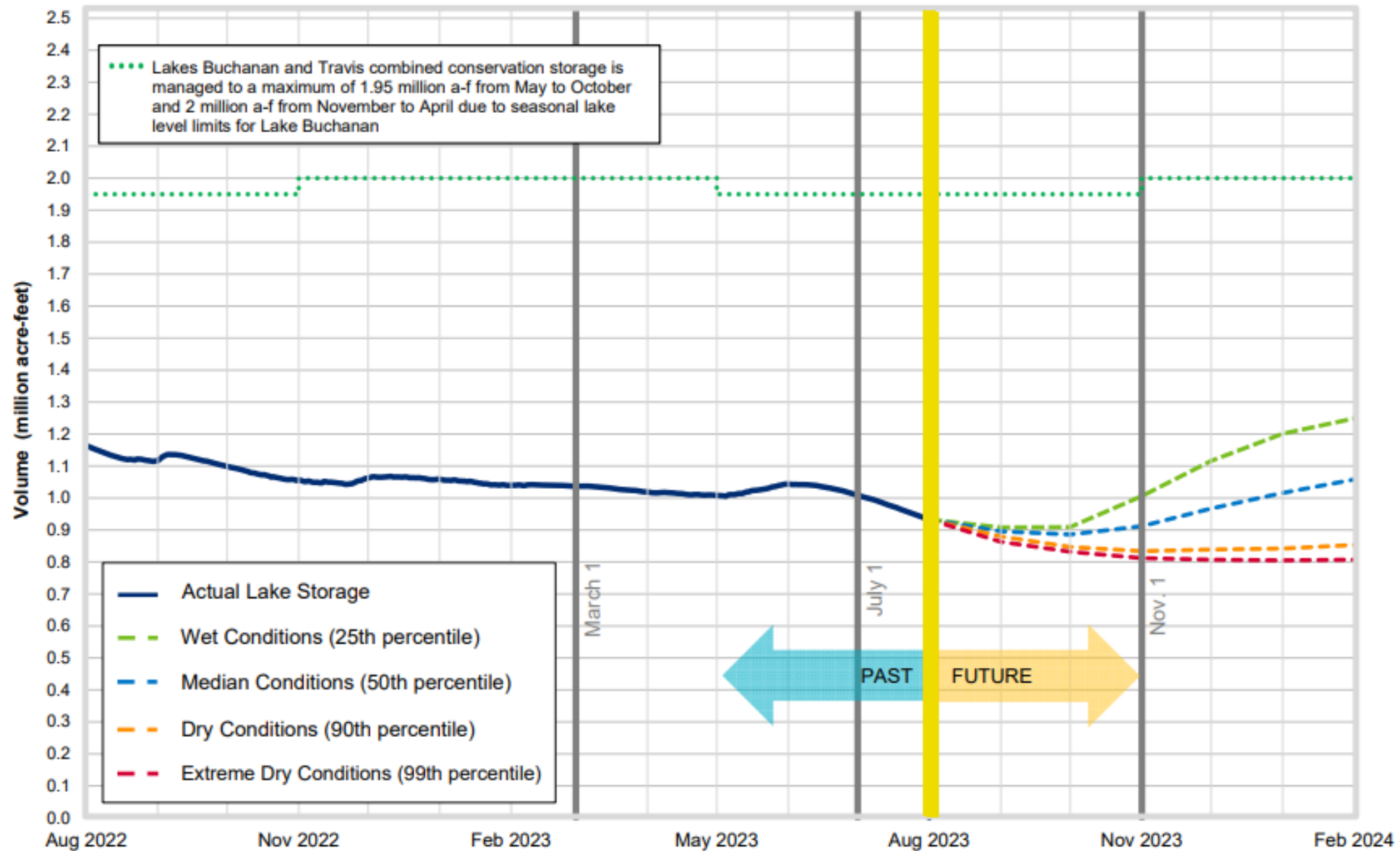


Combined Storage of Lakes Buchanan and Travis

January 1, 2005 through August 1, 2023



Lakes Buchanan and Travis Total Combined Storage Projections

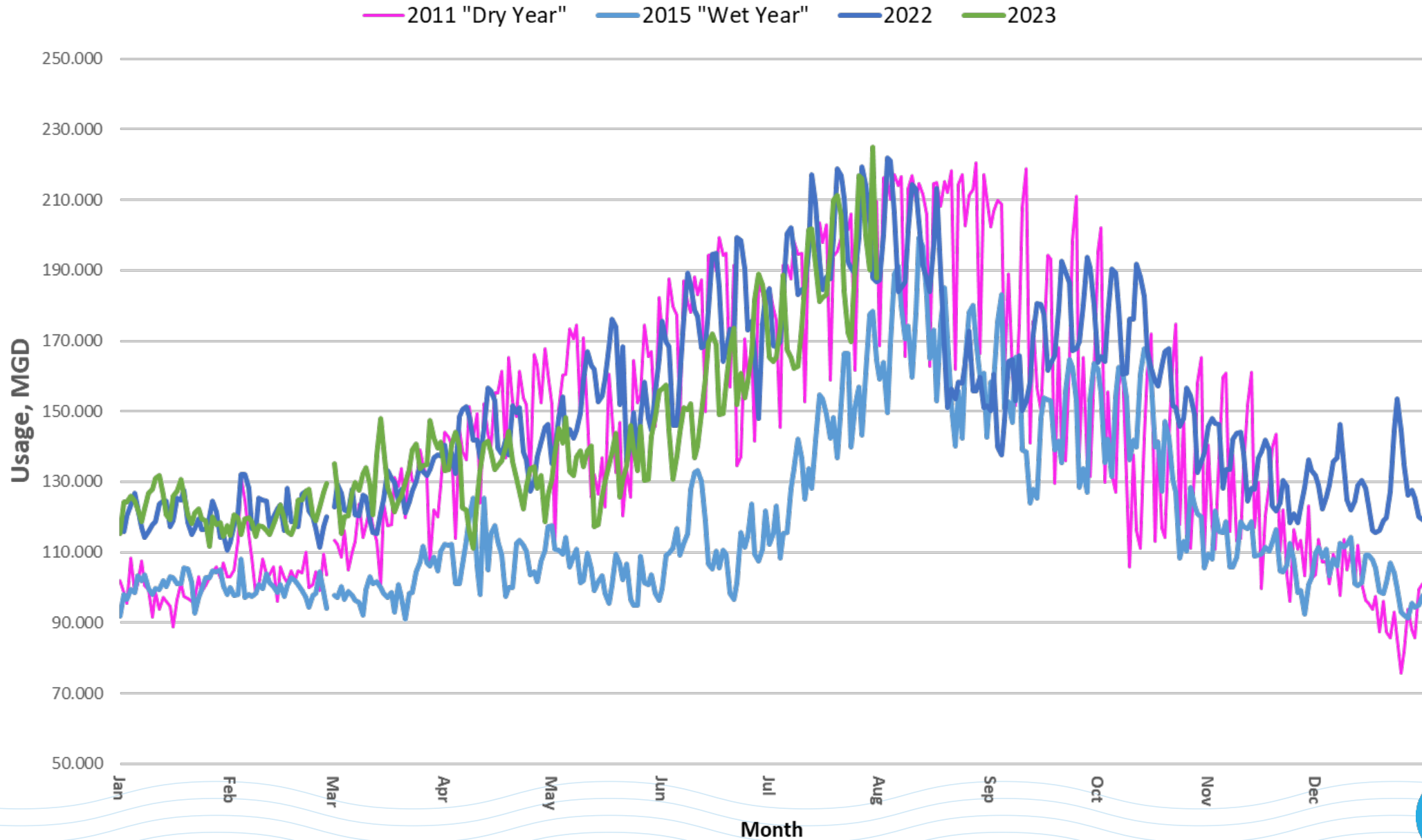


Date: Aug. 1, 2023

Note: One acre-foot equals 325,851 gallons



Multi-Year Daily Water Usage



Drought Activities

Stage 1 Drought Restriction Highlights



💧 Landscape watering

- Automatic irrigation
 - 1x per week (Wed/Thur)
 - Midnight – 8:00 am, 7:00 pm – midnight
- Hose irrigation
 - 2x per week (Wed/Thur, Sat/Sun)
 - Midnight – 10:00 am, 7:00 pm – midnight

💧 Patio misters - only between 4:00 pm and midnight

💧 Ornamental fountains must recirculate

💧 Additional more specific restrictions

Additional Stage 2 Drought Restriction Highlights



- 💧 Landscape watering
 - Automatic irrigation
 - 1x per week (Wed/Thur)
 - Midnight – **5:00 am**, 7:00 pm – midnight
 - Hose irrigation
 - **1x** per week (Sat/Sun)
 - Midnight – 10:00 am, 7:00 pm – midnight
 - Increased enforcement patrols and investigations
- 💧 Ornamental fountains > 4” are prohibited
- 💧 Golf course fairways irrigated 1x per week
- 💧 Charity car washes not allowed
- 💧 Landscape establishment is no longer exempted from watering schedule

Additional Activities

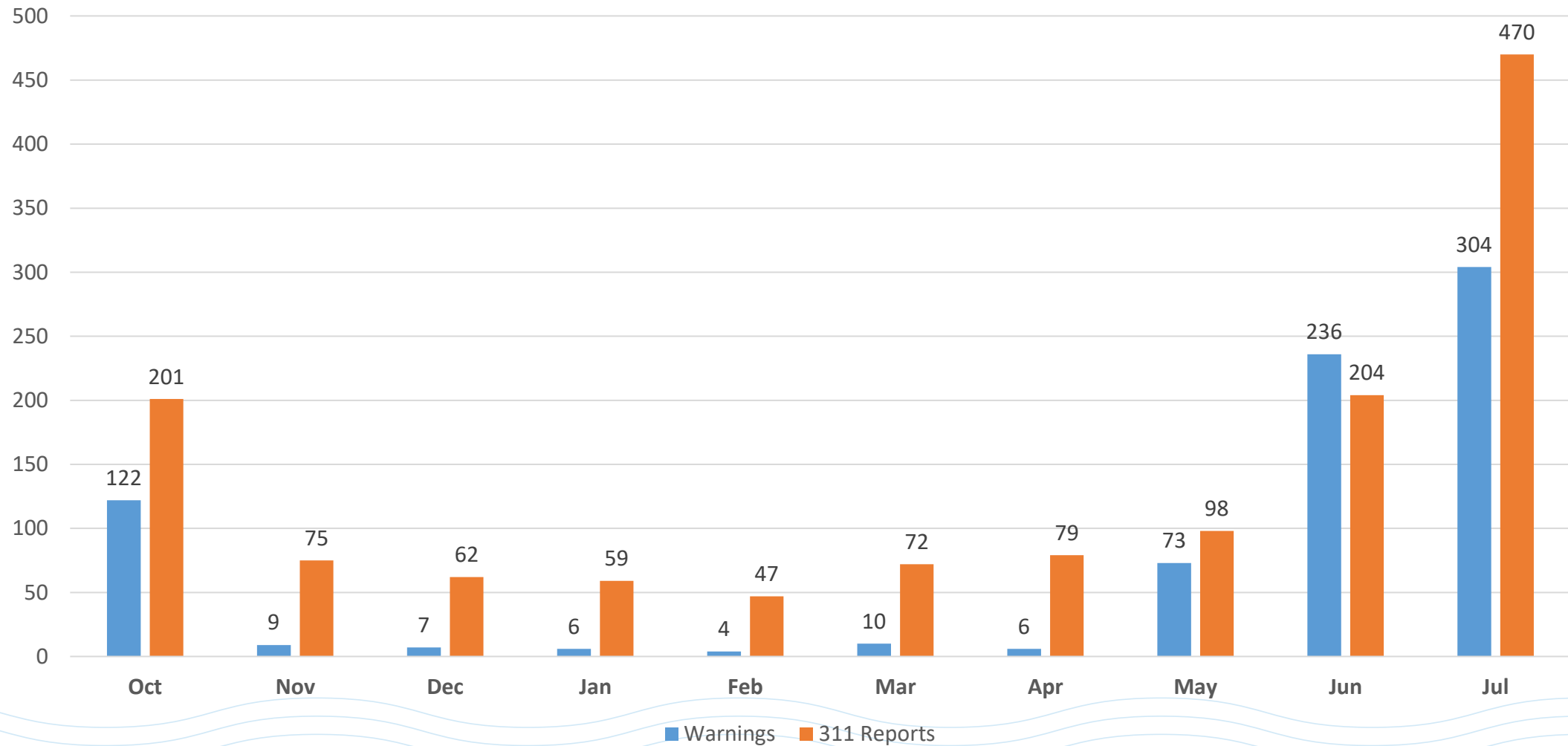
- Expanded patrols
- Hiring temporary staff
- Redistribute yard signs
- Restaurant outreach
 - Misters
 - Water glasses



Conservation Activities

Enforcement

Warnings Issued and 311 Reports



Water Savings

- 💧 1x per week water schedule – TBD (12% - 24%)
- 💧 256 million gallons - commercial facility efficiency programs (since Oct.)
- 💧 23 million gallons – water waste enforcement (since Oct.)
- 💧 264,000 gallons – incentive programs (since Oct.)

My ATX Water

- 💧 212 million gallons – My ATX Water leak alert savings (since Jan.)
- 💧 37 million gallons - My ATX Water high-tier bill alert reductions (Jan. - July)
 - 53% had final use less than forecast
 - 3,140 gallons, average reduction

Upcoming activities beyond drought

💧 Landscape Transformation activities

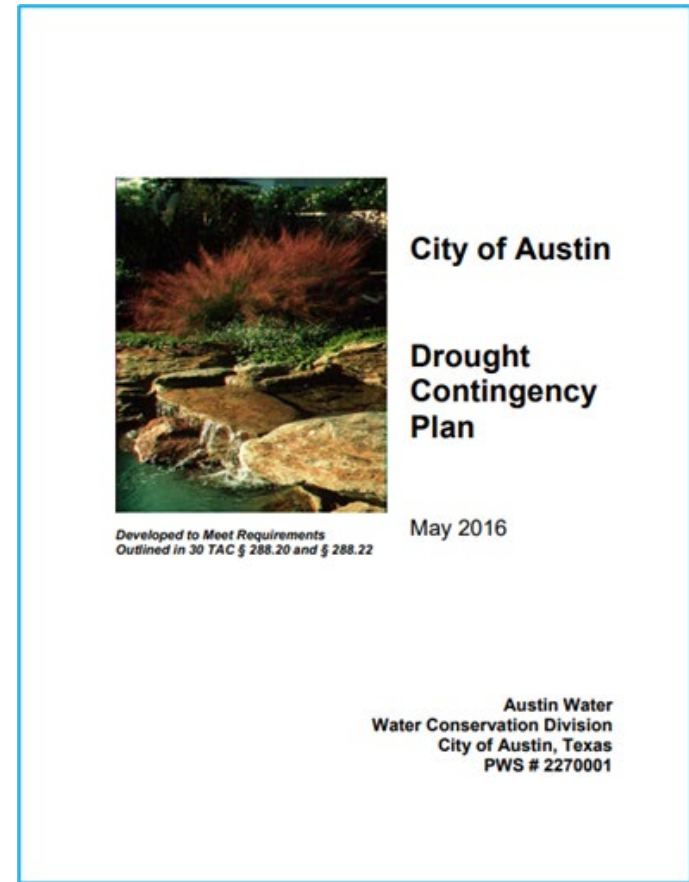
- 2018 Water Forward Plan
- Final public meeting – Aug. 10



Task	Implementation Target
Soil and compost requirements in new homes	In Code and underway
Inspection of new irrigation systems	January 2024
Builder-scale rainwater harvesting rebate for new homes	March 2024
Irrigation check ups for new irrigation systems	May 2024
Required plant list in new homes	July 2024
Limit irrigation area in new homes (UPC)	January 2025
Require irrigation pressure devices for new irrigation systems (UPC)	January 2025
Require plumbing for laundry to landscape reuse in new homes (UPC)	January 2025

Upcoming activities beyond drought

- 💧 Develop 2024 Conservation Plan
 - Conservation activities, current and future
 - Future per-person water use and water loss goals
 - Due May 2024
- 💧 Develop 2024 Drought Contingency Plan
 - Future drought stages & triggers
 - Future restrictions and utility activities
 - Public input – Fall 2023
 - Due May 2024



An aerial photograph of a wastewater treatment plant. In the foreground, there are large circular aeration tanks with metal walkways and railings. Beyond the tanks is a green field and some industrial buildings. In the far background, a dense forest separates the plant from a city skyline under a cloudy sky.

Thank You

Austinwater.org

