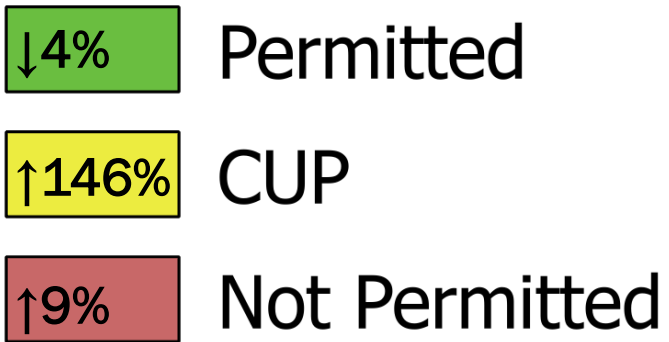




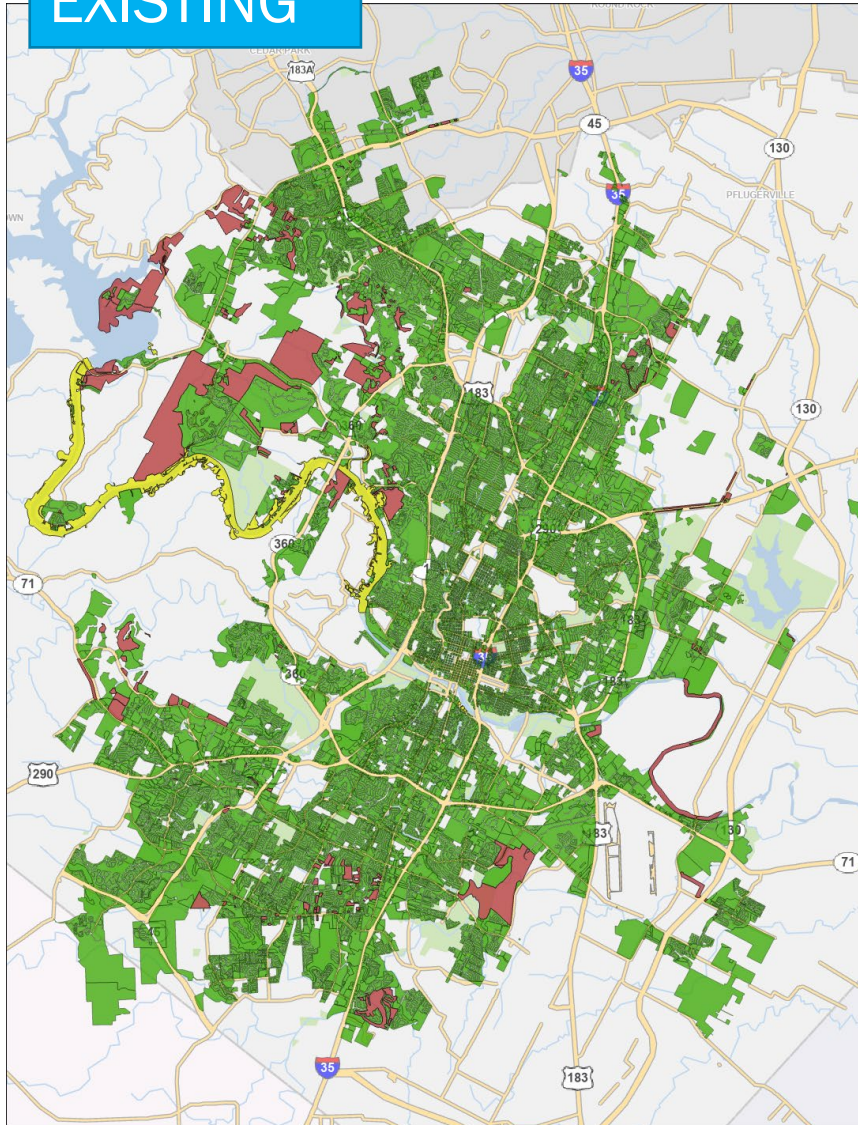
Accessibility– Childcare Services Limited

12 persons or less

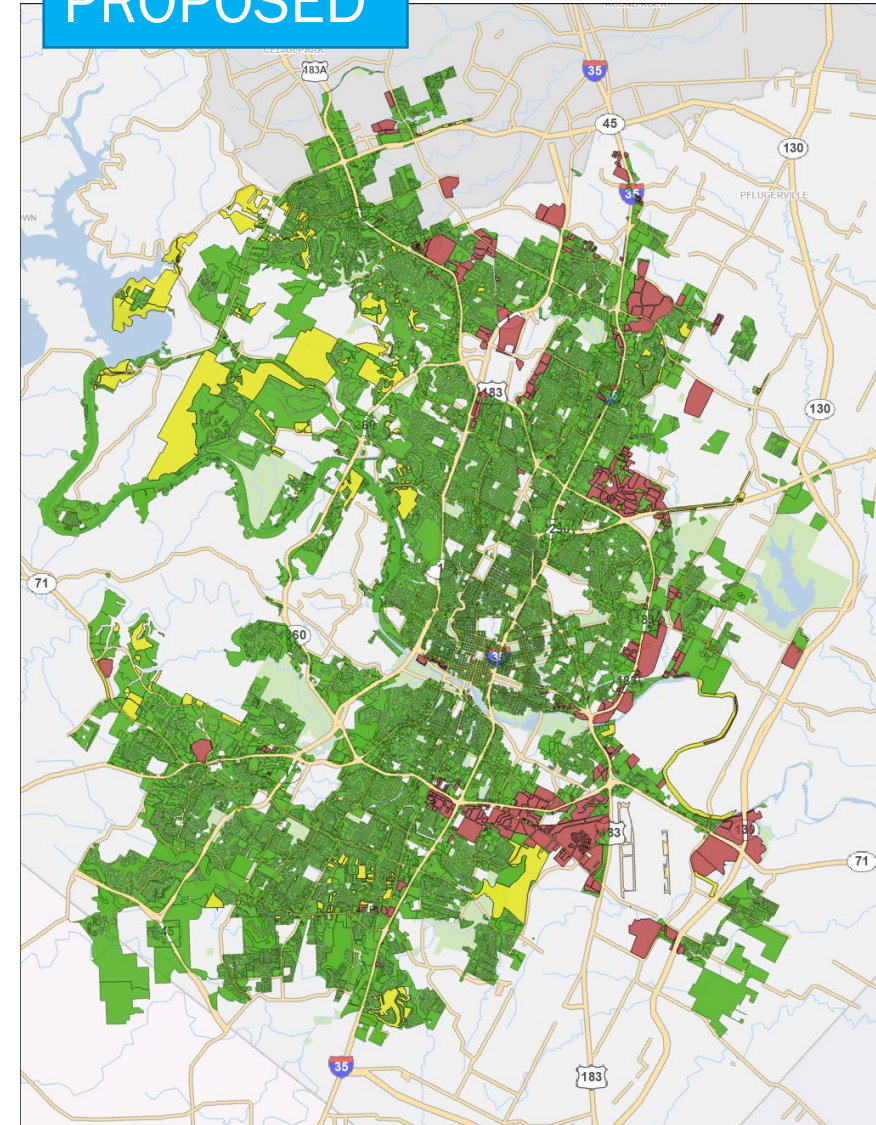


↑= Change in acreage

EXISTING



PROPOSED



*Maps do not include areas within Regulating Plans, TODs, R&D, or PUDs



Accessibility– Childcare Services General

More than 12 but
not more than 24
persons

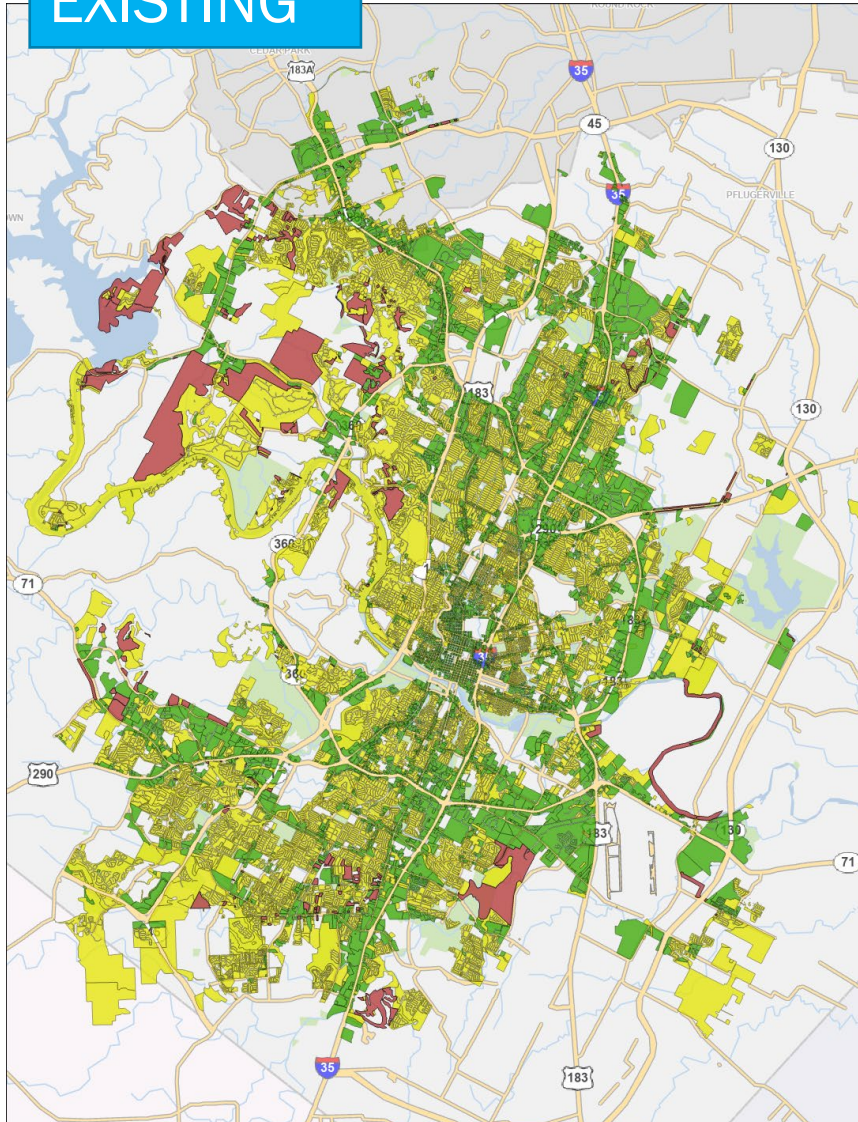
↑154% Permitted

↓85% CUP

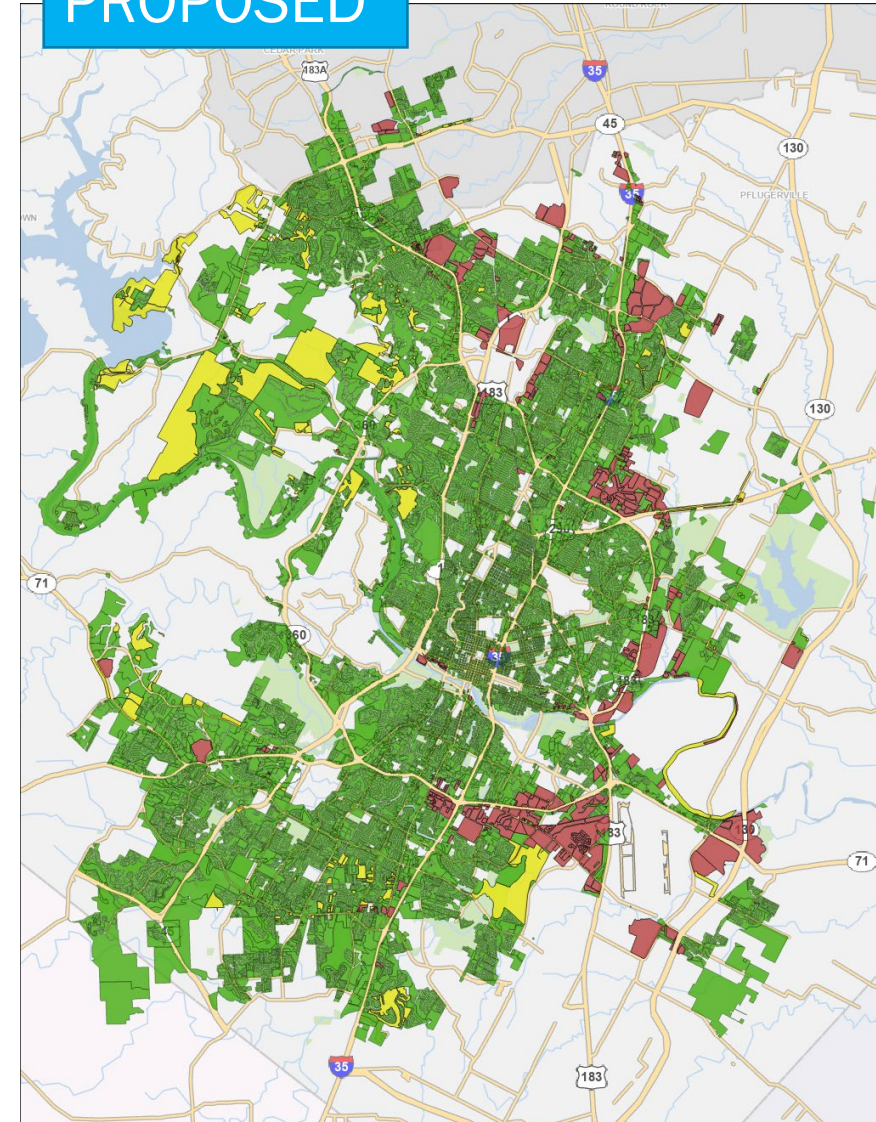
↑9% Not Permitted

↑= Change in acreage

EXISTING



PROPOSED



*Maps do not include areas within Regulating Plans, TODs, R&D or PUDs



Accessibility– Childcare Services Commercial

More than 24
persons

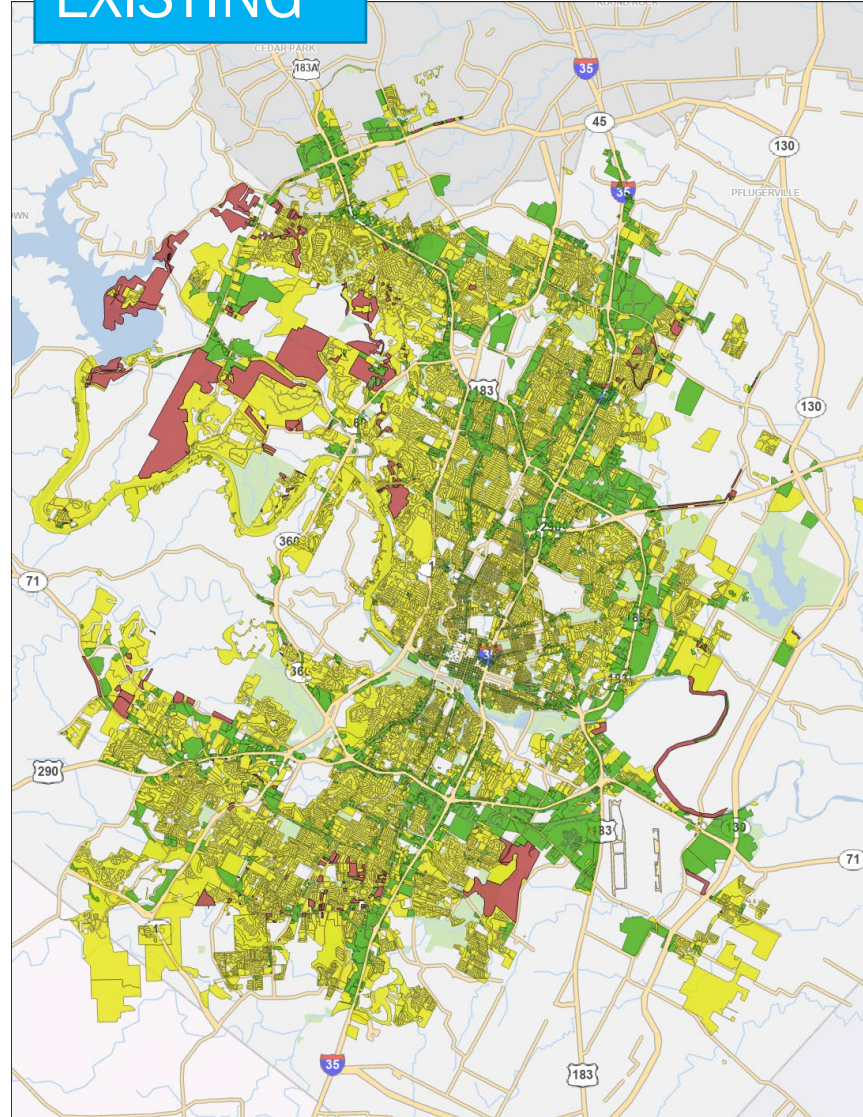
↑255% Permitted

↓77% CUP

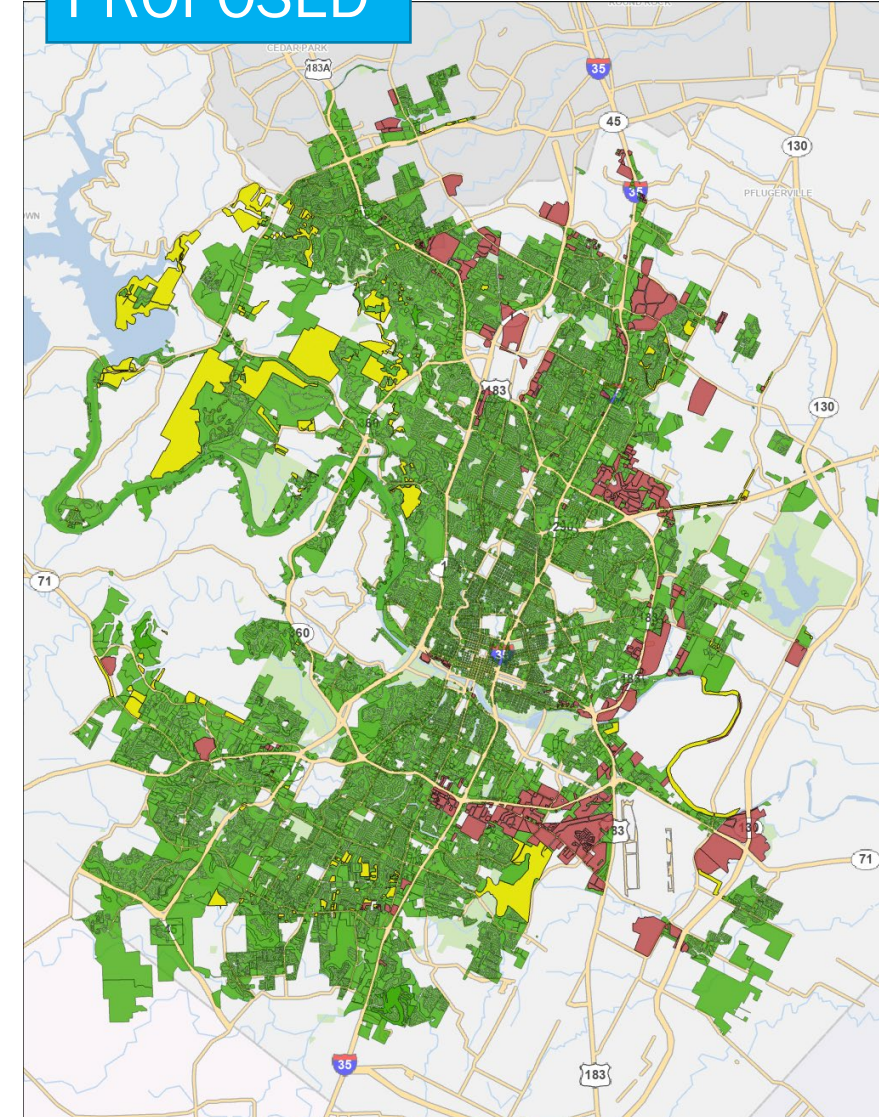
↑18% Not Permitted

↑= Change in acreage

EXISTING



PROPOSED



*Maps do not include areas within Regulating Plans, TODs, R&D, or PUDS