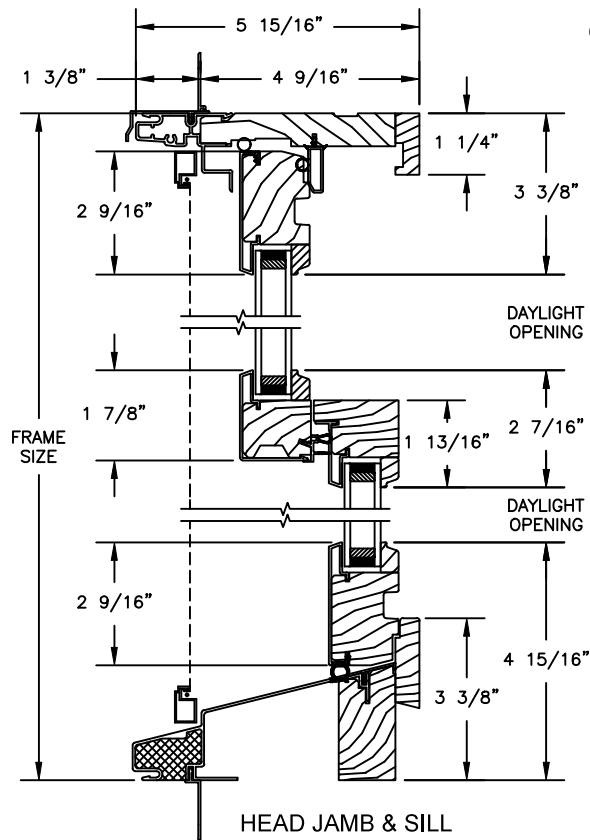


Pinnacle Series

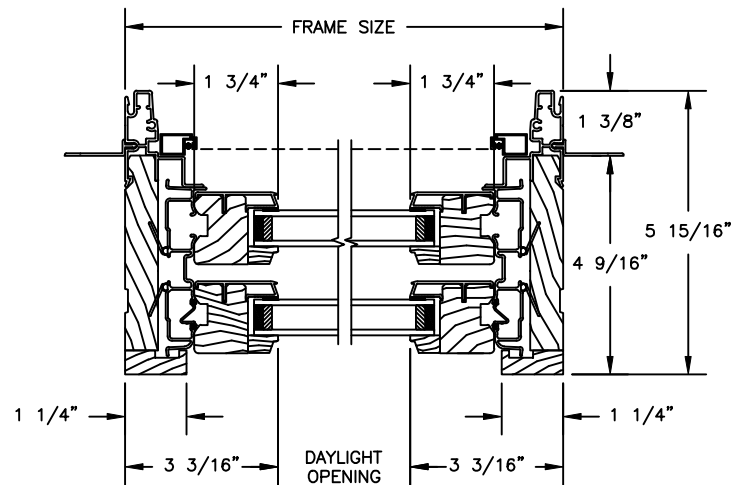
CLAD DOUBLE HUNG

SECTION DETAILS : OPERATING / PICTURE

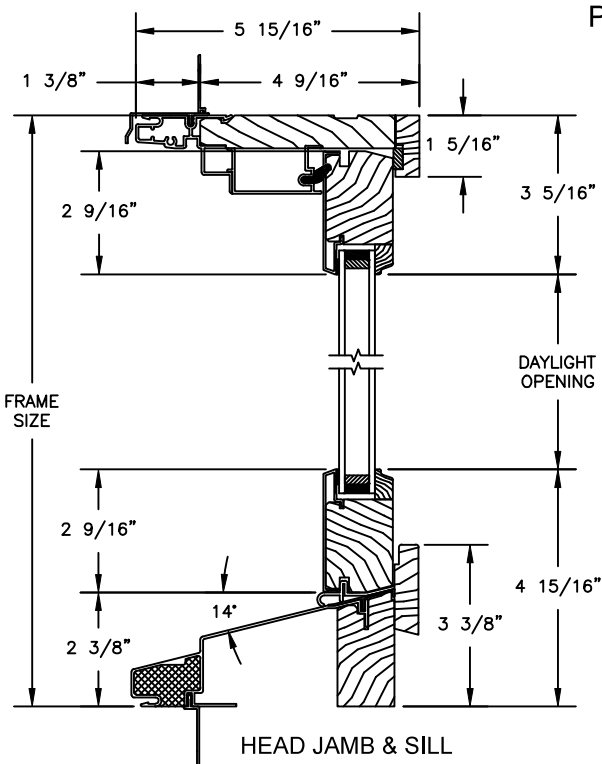
SCALE: 3" = 1'-0"



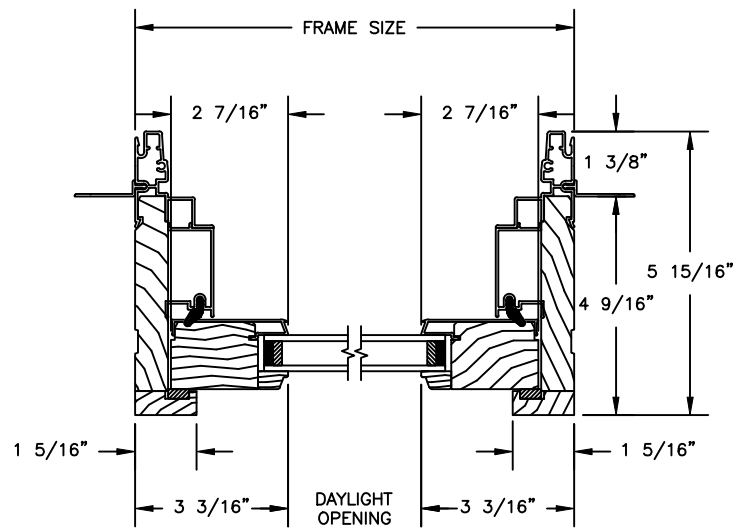
OPERATING



JAMBS



PICTURE



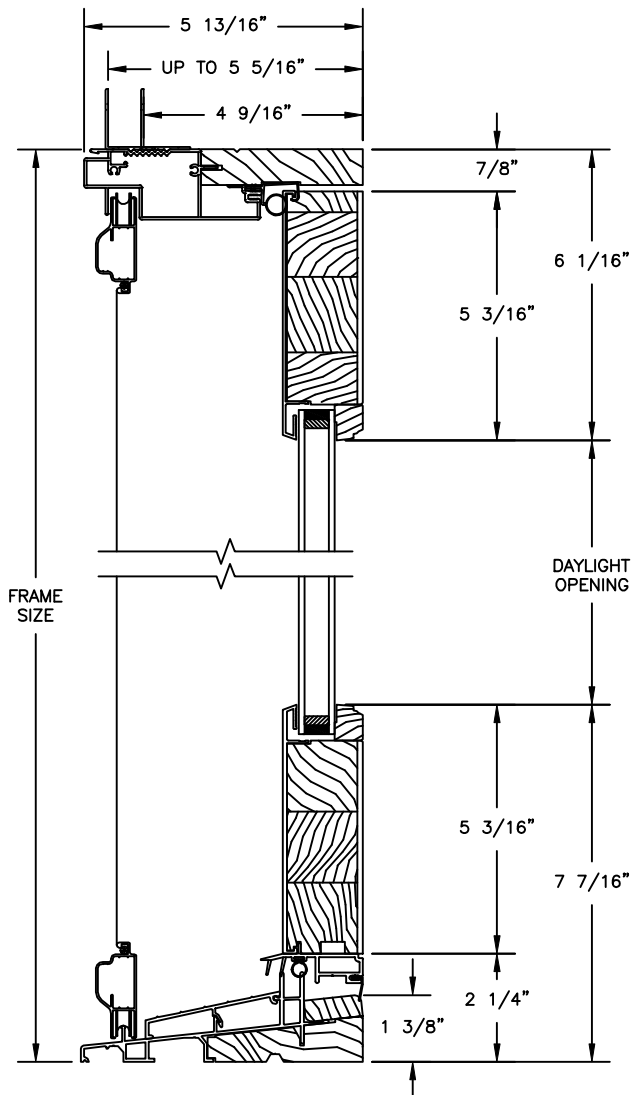
JAMBS

Pinnacle Series

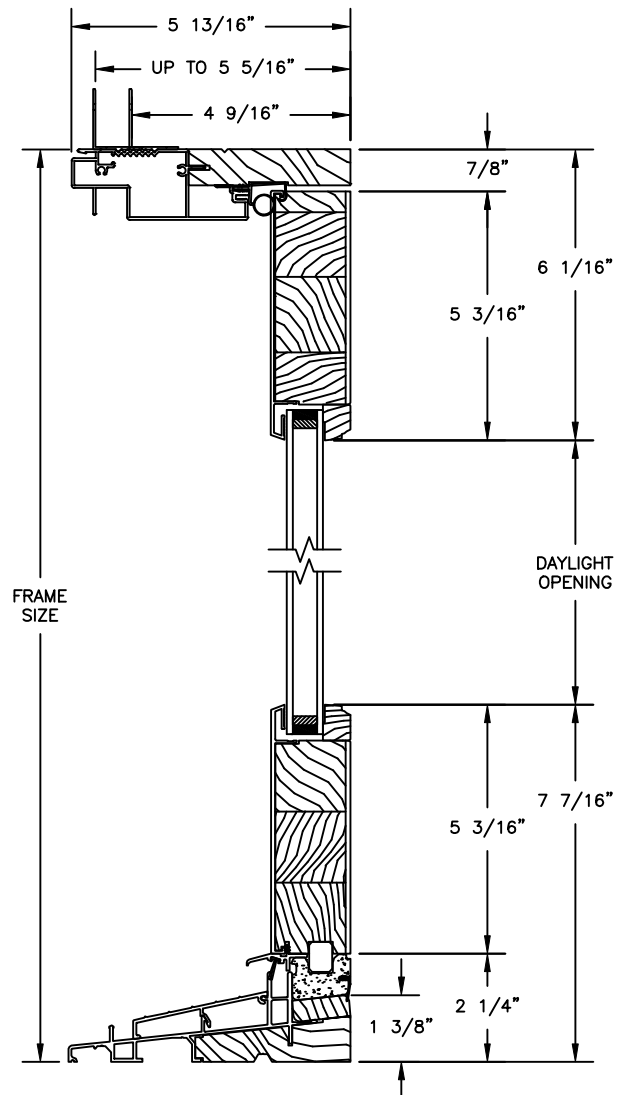
CLAD PATIO DOOR - NARROW INSWING

SECTION DETAILS 4 9/16" TO 5 5/16" JAMB

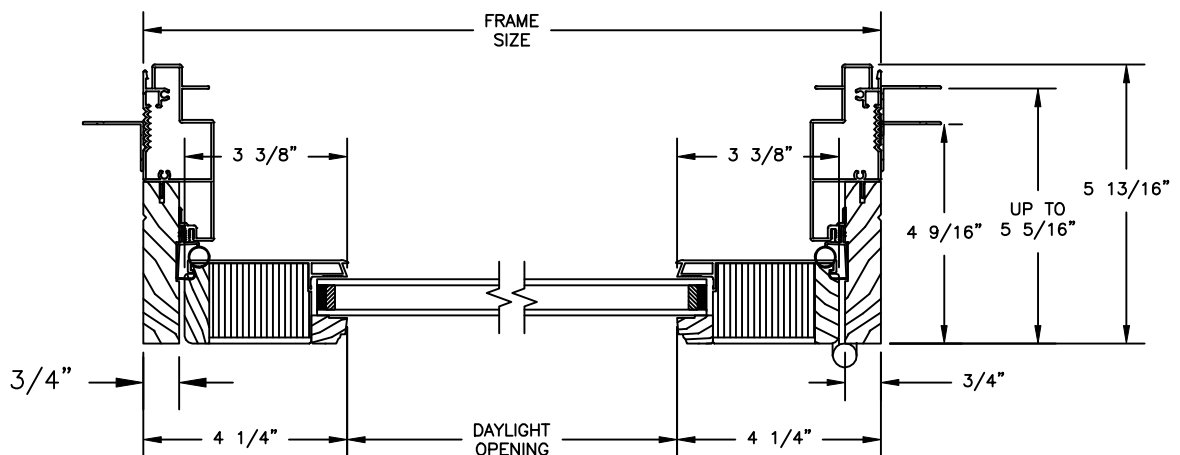
SCALE: 3" = 1'-0"



OPERATING HEAD JAMB & SILL



STATIONARY HEAD JAMB & SILL



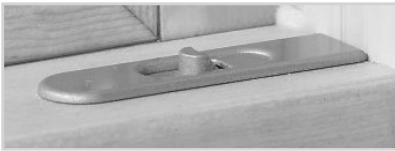
1 PANEL JAMB



Pinnacle Double Hung & Glide-by

Features and Benefits

- The warmth and beauty of Clear Select Pine, Douglas Fir or Natural Alder; can be painted or stained
- Clad units offer a strong, durable extruded aluminum sash and frame for low maintenance; primed units offer the traditional appearance of decorative cellular PVC trim
- Glass is replaceable in case of damage
- Both tape and silicone glazed, with interior wood stops for superior strength and seal
- EZ Tilt operation available for easy removal and replacement of sash (double hung only)



- Both sashes tilt in with compression or concealed jambliner for easy cleaning
- Recessed lock and keeper for a sleek appearance



- Block and tackle balance system for ease of operation
- Prime double hung units come standard with cellular PVC trim, blind stop and sill
- No-finger pull option for hardware application

Sizes

Available in hundreds of standard and custom sizes

Glazing

- Windsor Glazing System provides 3/4" double pane insulated glass; Cardinal® LoE 366 glass standard; tinted, tempered, obscure and laminated glass available
- Glazed with tape and silicone sealant
- Custom and special glass types available
- Preserve protective film optional

Exterior Trim

- Clad windows available with WM 180 brickmould, Williamsburg, or 3-1/2" flat casing; 3/8", 1-1/4", 2-1/4" subsills
- Primed windows available with WM 180 brickmould, WM 180 brickmould with flange, Williamsburg, 3-1/2" flat, 4-1/2" backband, 5-1/2" flat or plantation casing; double hung sill nose, 2" bull nose sill nose or belly sill nose
- All prime window trims, sill nose and outside stops are cellular PVC

Grilles

Windsor Divided Lite (WDL) = simulated divided lite

- 7/8" and 1-1/4" Perimeter Grille (*NOT available on radius double hung*)
- 7/8" and 1-1/4" Stick Grille
- 3/4" and 1" Profiled Inner Grille
- 13/16" Flat Inner Grille
- 7/8" and 1-1/4" Ogee WDL
- 5/8", 7/8", 1-1/4" and 2" Short Putty WDL
- 5/8", 7/8", 1-1/4" and 2" Short Contemporary WDL
- 2" Simulated Check Rail (*DH picture only*)
- Standard and custom grille patterns available

Finishes

- Interior – Available in Clear Select Pine, Douglas Fir or Natural Alder
 - Primed: white or black
 - Painted: white, black or gray
 - Stained: 9 color options
- Exterior – Clad windows feature heavy-duty extruded aluminum cladding on sash and frame; primed windows (*double hung only*) offer an assortment of traditional cellular PVC trim options

Clad Colors

All clad colors painted in-house with the highly durable AAMA 2604 standard finish, or upgrade to AAMA 2605 for the most challenging of environments

- 23 Standard Clad Colors available in 2604 and 2605 finish
- 20 Feature Clad Colors available in 2604 and 2605 finish (Custom color matching is also available)
- 7 Matte Clad Colors available in the 2604 finish only

Hardware

Double hung lock available in champagne, white, bronze and black; optional finishes in faux bronze, oil rubbed bronze, satin nickel and bright brass

Performance Ratings

For current performance ratings, visit our website at windsorwindows.com and click on "Professional Information" in the menu bar





Pinnacle Swinging Patio Door

Features and Benefits

- Stainless steel multi-point locking hardware option for added security
- Integral structural astragal allows for doors up to 12 feet wide to be placed in a single frame, which decreases the potential for air and water infiltration
- "Easy Adjust" hinge system for effortless operation and correction after installation
- Wept sill system to eliminate water infiltration
- Dual-seal frame weatherstripping at panel face and edge improves air and thermal performance
- Taller sill provides excellent water performance and design pressure ratings
- Foam-backed glazing bead prevents paint and stain from bleeding
- Active stiles constructed of an LVL core material for added strength and stability
- Panel exterior matches Pinnacle product line with consistent depth from glass to face of the panel for a clean, complementary appearance
- Panels available in traditional French or contemporary narrow stile
- Low clearance (ADA-approved) sill options
- In-swing and out-swing options available
- 1/2 and 3/4 lite available with flat or split panel option
- Seg-top available

Sizes

- Five standard heights: 6'8", 6'10", 8'0", 9'0" and 10'0" (9'0" and 10'0" doors available in French panels only)
- Custom sizes available

Glazing

- Windsor Glazing System provides 3/4" double pane insulated glass; Cardinal® LoE 366 glass standard; tinted, tempered, obscure and laminated glass available
- Interior stop glazed with silicone sealant
- Custom and special glass types available

Exterior Trim

- Clad doors available with WM 180 brickmould, Williamsburg or 3-1/2" flat casing; primed doors available with WM 180 brickmould, WM 180 brickmould with flange, Williamsburg, 3-1/2" flat, 4-1/2" backband, 5-1/2" flat or plantation casing
- All prime door trims are cellular PVC

Grilles

Windsor Divided Lite (WDL) = simulated divided lite

- 7/8" and 1-1/4" Perimeter Grille
- 3-4" and 1" Profiled Inner Grille
- 13/16" Flat Inner Grille
- 7/8" and 1-1/4" Ogee WDL
- 5/8", 7/8", 1-1/4" and 2" Short Putty WDL
- 5/8", 7/8", 1-1/4" and 2" Short Contemporary WDL
- 3-3/8" Simulated Mid Rail
- Standard and custom grille patterns available

Weatherstripping

- Rigid, weatherable PVC or urethane foam encased in polyethylene film
- In-swing and out-swing doors feature bottom heavy-duty, self-adjusting sweep

Finishes

- Interior – Available in Clear Select Pine, Douglas Fir or Natural Alder
 - Primed: white or black
 - Painted: white, black or gray
 - Stained: 9 color options
- Exterior – Clad doors available in heavy-duty extruded aluminum cladding; primed doors offer an assortment of traditional cellular PVC trim options

Clad Colors

- All clad colors painted in-house with the highly durable AAMA 2604 standard finish, or upgrade to AAMA 2605 for the most challenging of environments
- 23 Standard Clad Colors available in 2604 and 2605 finish
 - 20 Feature Clad Colors available in 2604 and 2605 finish (Custom color matching is also available)
 - 7 Matte Clad Colors available in the 2604 finish only

Hardware

Classic or contemporary handle available in white, brushed chrome, polished chrome, satin nickel, antique nickel, brass, antique brass, faux bronze, oil rubbed bronze and black; Euro handle available in satin nickel and black

Performance Ratings

For current performance ratings, visit our website at windsorwindows.com and click on "Professional Information" in the menu bar

