

TRANSFORMATION:

BY MARGO SAWYER

FINAL DESIGN FOR FIRE 51 EMS 40

AUSTIN ART IN PUBLIC PLACES

AUGUST 11, 2023



TRANSFORMATION

BORN FROM DISTRUCTION

EXTREM WEATHER EVENTS, SUCH AS HURRICAN HARVEY
DISTROYED TWO WAREHOUSES I OWN IN ELGIN, TEXAS.

I SAVED THE HISTORIC BRICK

MARGO SAWYER ART WORK: *TRANSFORMATION*

I wanted to create an artwork that honors and responds to the important daily tasks of the station staff and how they interact and address disasters each and every day. I imagine it is rare that the individuals who dedicate their life to saving others get the chance to see the site again and witness the rebuilding and personal transformations that happen as a result.

My artwork, *Transformation*, was born of disaster and transformed into iconic pyramid forms. I owned an eighty-year old building in Elgin, Texas which was destroyed in 2012 by a devastating weather event. In the demolition process, I salvaged the historic extruded ceramic T bricks, I believe an early form of cement block. With their inherent beauty too hard to destroy, I knew someday, they would become art. In 2014, I was asked to have a solo exhibition at the Umlauf Sculpture Garden and Museum. I had no money and no time, and then I looked at all my bricks, and thought these could live again. These pyramids were part of the solo exhibition entitled, *Reflect*, 2014. In considering this public art opportunity, I thought what better gift than to share the transformed pyramids that were born from disaster and to live again as permanent art works for *Fire Station 51 / EMS Station 40* and the City of Austin, Austin Art in Public Places.

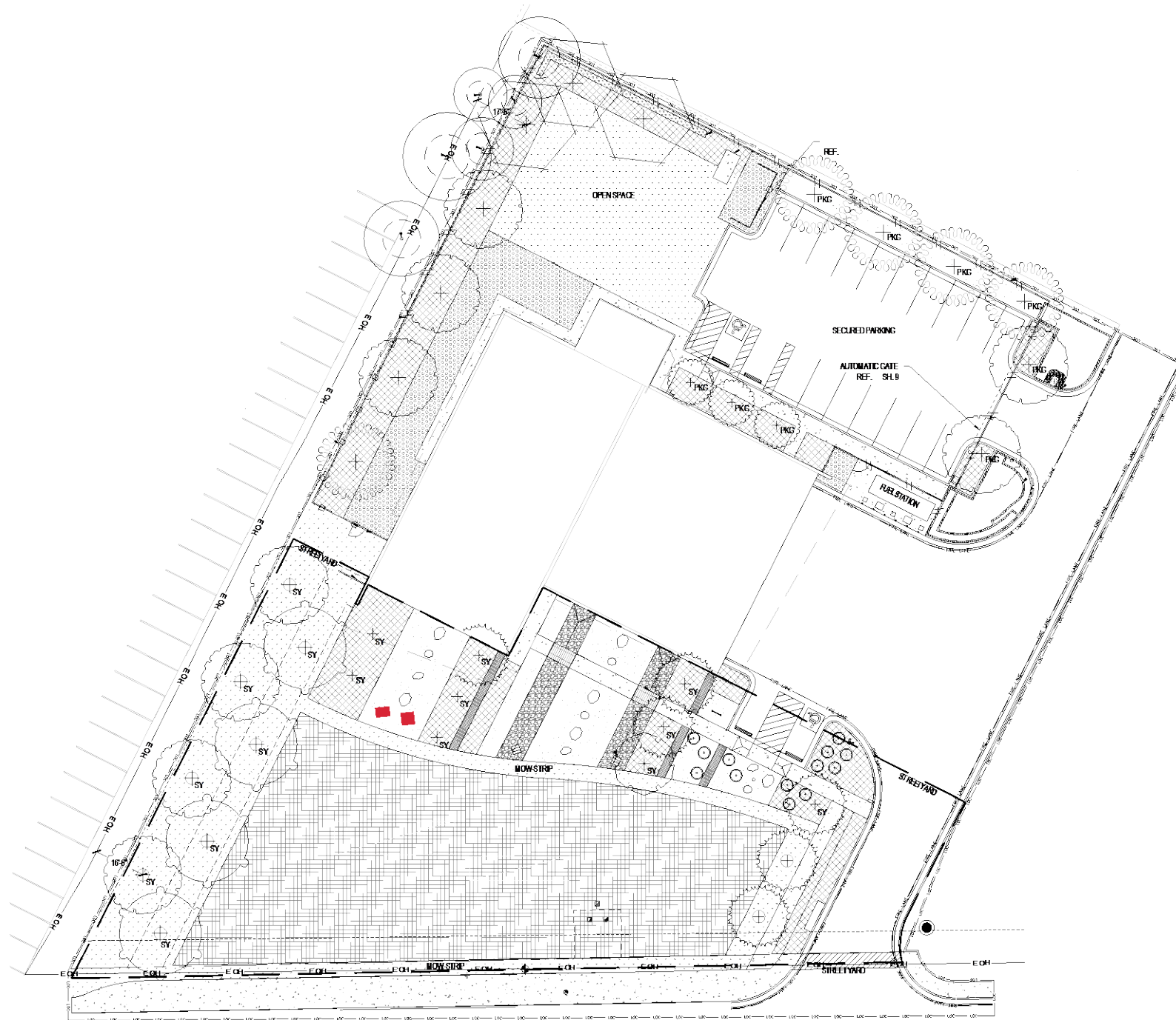
Transformation, are two pyramid structures made with historic ceramic extruded bricks that will reside in the pollinating meadow of the site. Hints of gold leaf will shine out from the forms, hopefully casting a mysteriousness to them. The pyramid is such a powerful symbol used in ancient cultures. I was fortunate to visit the Giza pyramids when I was 15, an experience that inspired me to become a sculptor of structures that have great power and beauty. I wish to transform a part of their station to create an opportunity for serenity and reflection in the workplace.

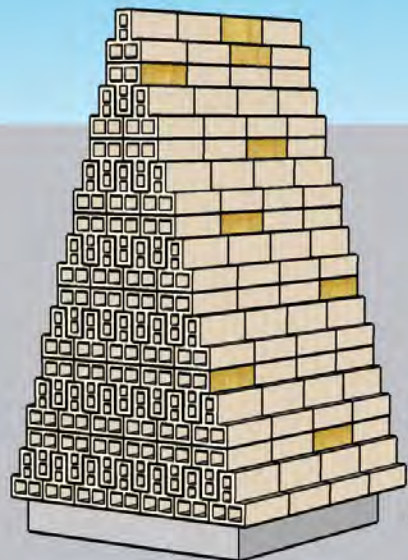
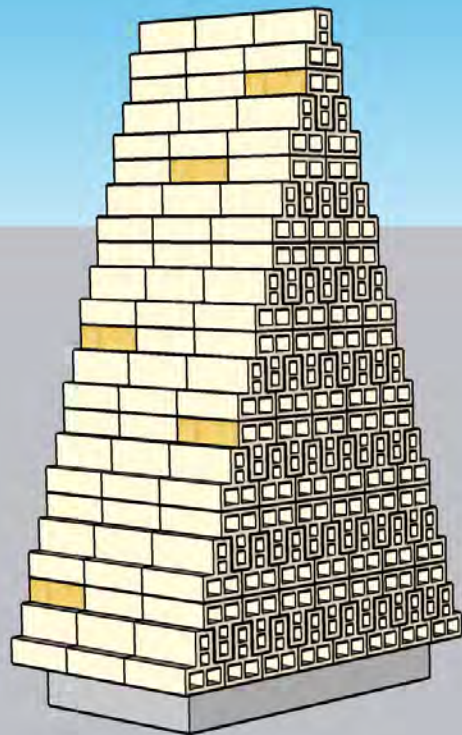


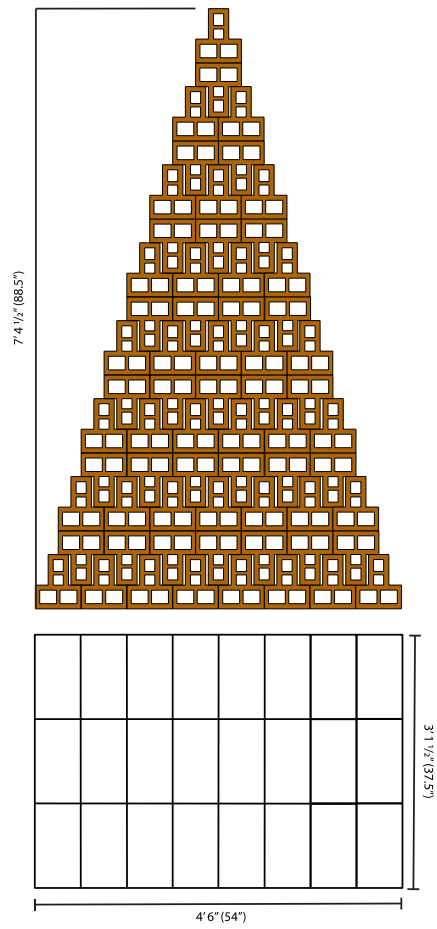






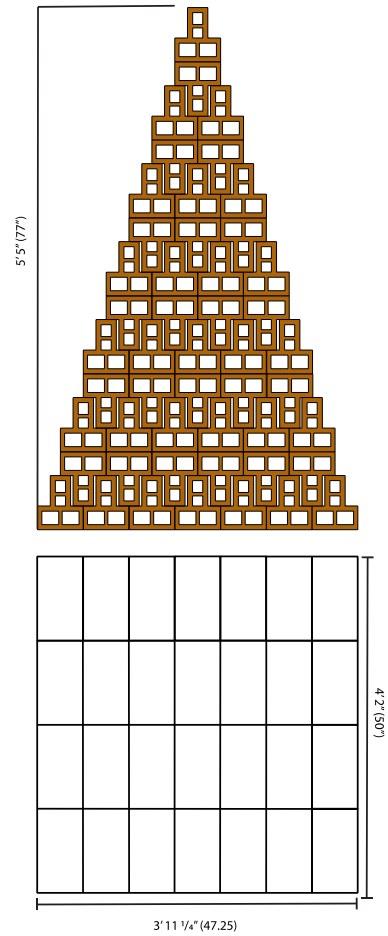
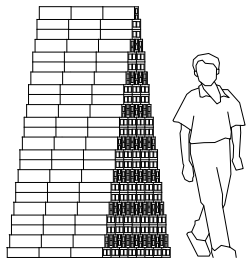






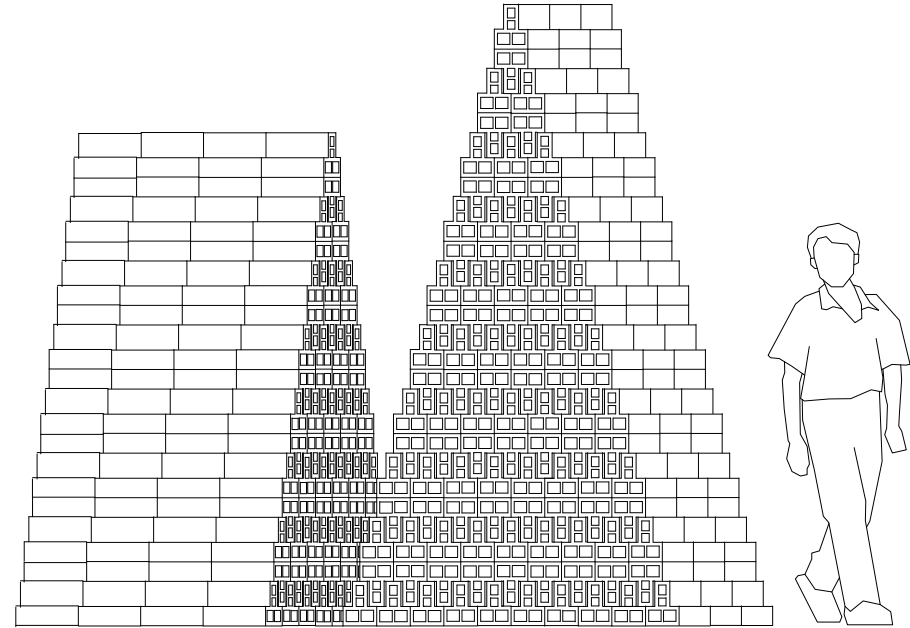
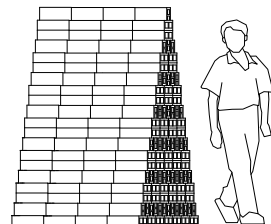
PYRAMID 4-3-8

4-HOLE T-BRICK
DOUBLE STACKED
8 BRICKS ACROSS BOTTOM LAYER
TOTAL BRICKS: 192
HEIGHT: 7' 4 1/2" (88.5")
BASE AREA: 14.0625 sqft
OVERALL WEIGHT: 3,168 lbs (dry stacked)

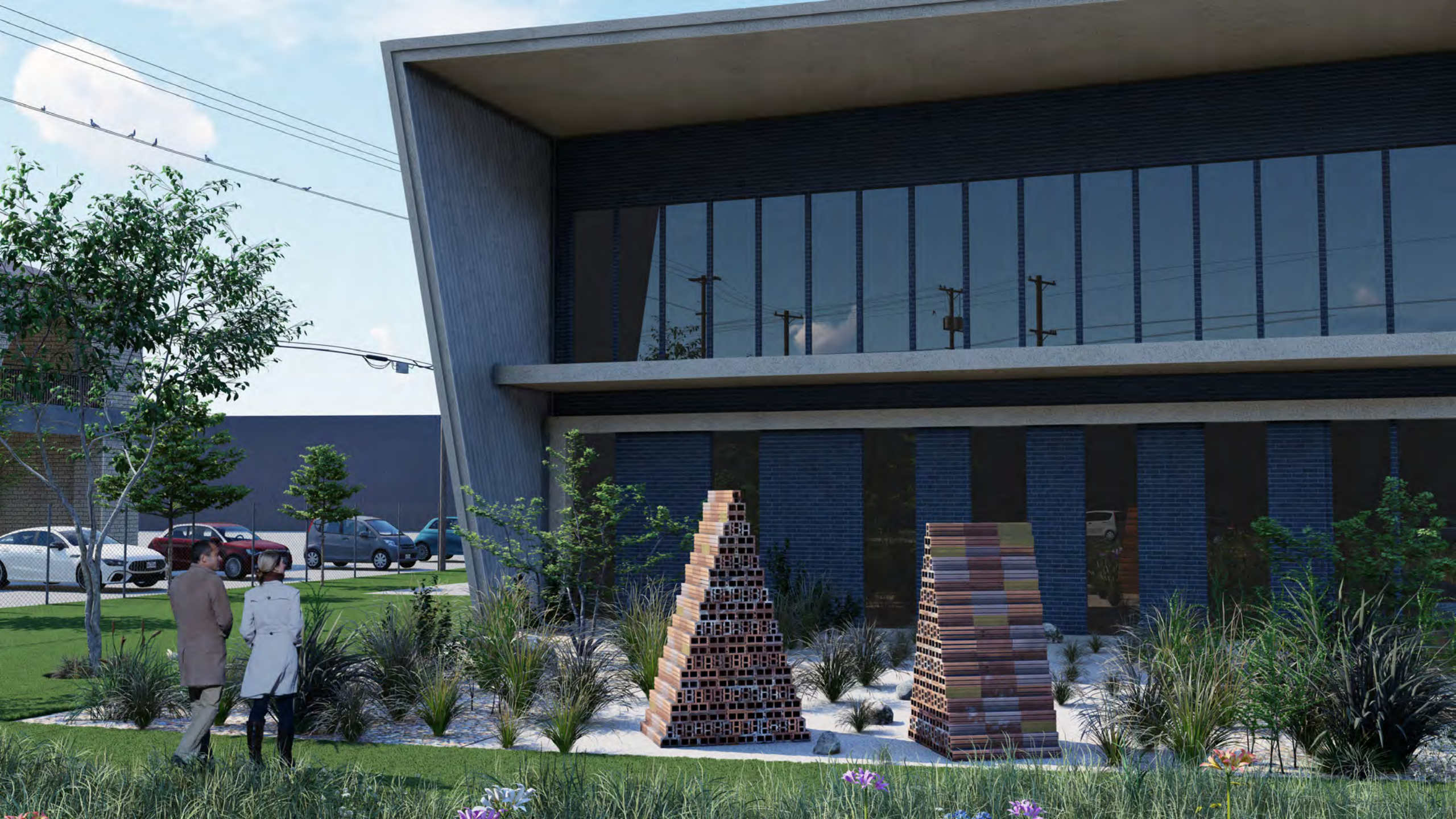


PYRAMID 4-4-7

4-HOLE T-BRICK
DOUBLE STACKED
7 BRICKS ACROSS BOTTOM LAYER
TOTAL BRICKS: 196
HEIGHT: 5' 5" (77")
BASE AREA: 16.41 sqft
OVERALL WEIGHT: 3,234 lbs (dry stacked)



TOTAL BASE AREA FOR 2 PYRAMIDS: 30.47 sqft







FIRE-EMS



COMMUNITY INVOLEMENT

COMMUNITY OURTREACH AND INVOLVEMENT

We had two virtual meetings in 2022, one with all the Austin EMS & Fire leaders, and in July met with chief Peter Teliha to understand more on daily life at the station. I have made numerous site visits and have been fortunate to visit with the Fire Chief and staff, to know a little of their life at the station.

From prior experience, when works of mine have been integrated with the architecture and landscape of a site, individuals who helped get the site ready feel joy that they were a part of the creative process. Not only have I experienced pride and joy in works I have created, as well as the contractors and assistants have as well. My focus is for community involvement in the creation of a work, this process helps foster pride and ownership in the work. For instance: at my Umlauf show, we had 25 Dell Engineers assist in the creation of the circle and pyramids. In just a few hours the group was able to complete a major part of this exhibition. It was a fantastic team experience for them to feel proud to be a part of its creation.

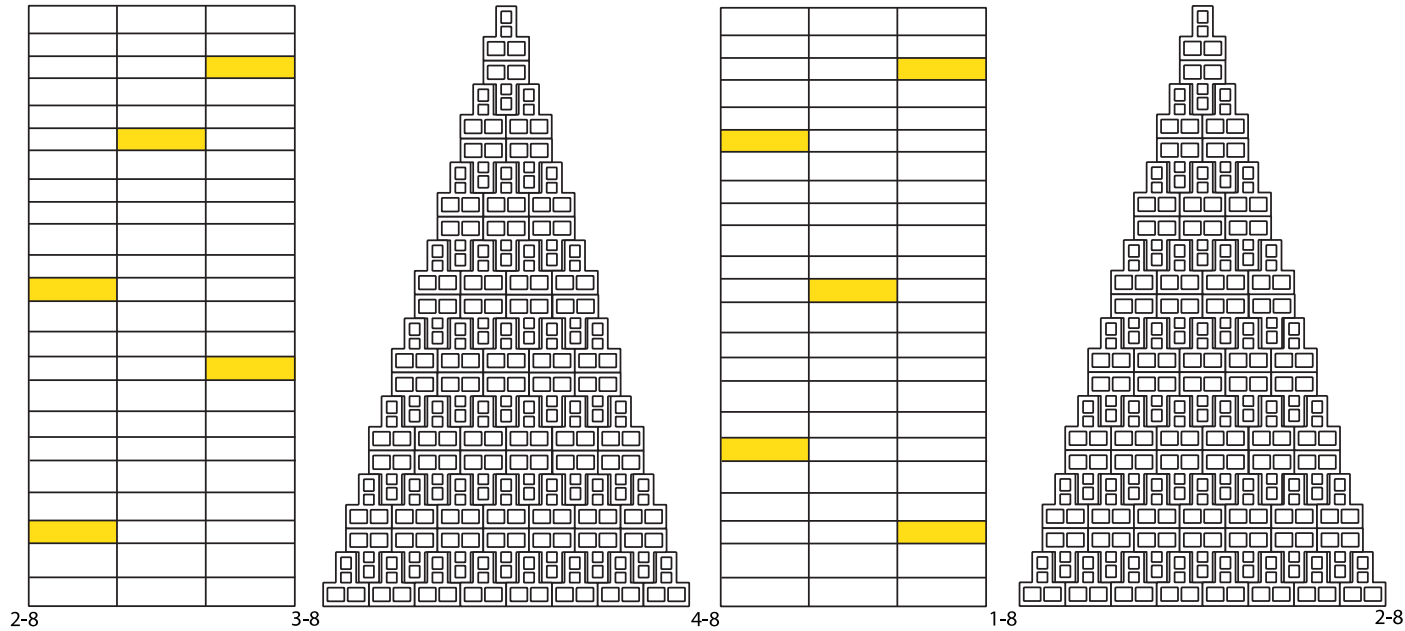
TRANSFORMATION PYRAMIDS

For *Transformation*, I have designed and tested a few bricks to be gilded with imitation gold leaf. I intend to hold a workshop on gilding, and encourage the station staff and the community who tends to the landscape to gild one of the bricks each, and to dedicate that brick to an important event in their life, by writing something on the back of the brick. There may be an opportunity for people to help build the pyramids, all these gestures I hope will create inclusion in the creative process. It takes a Village.



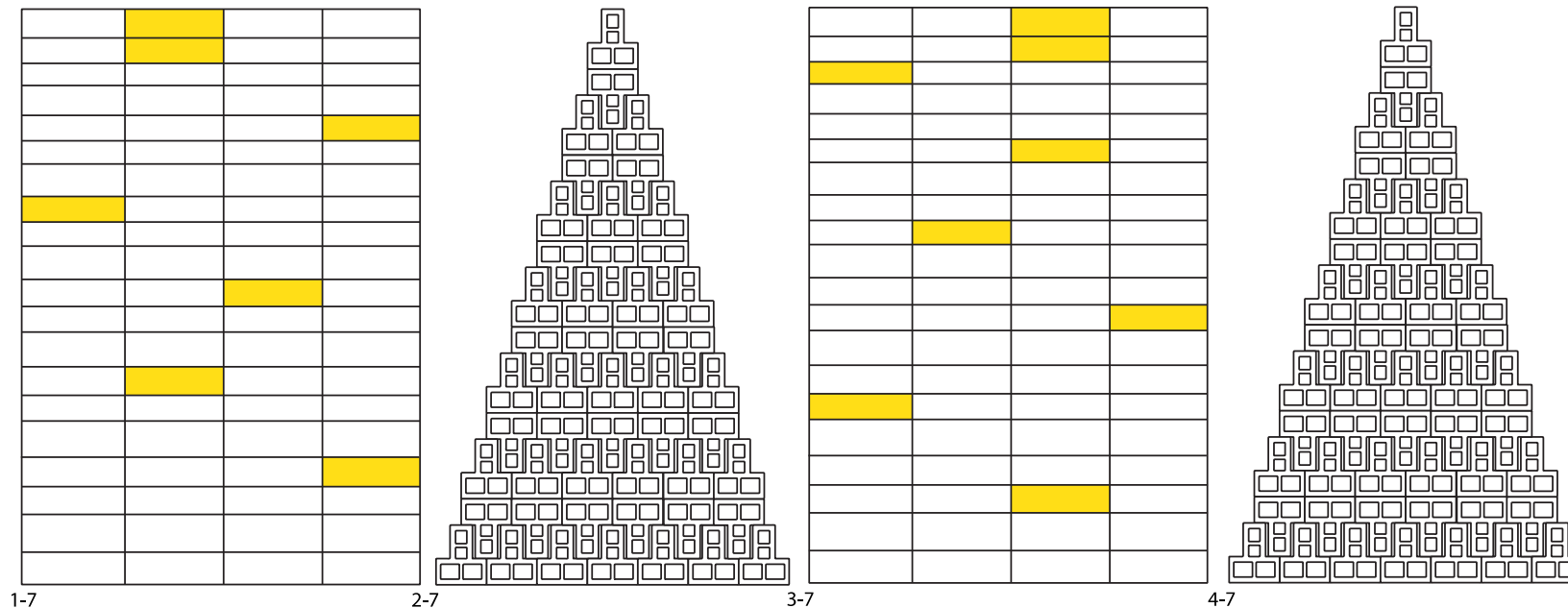


4-3-8



GOLD LEAF INFO:
10 BRICKS
3.05 sqft of gold leaf
~1-2 grams**

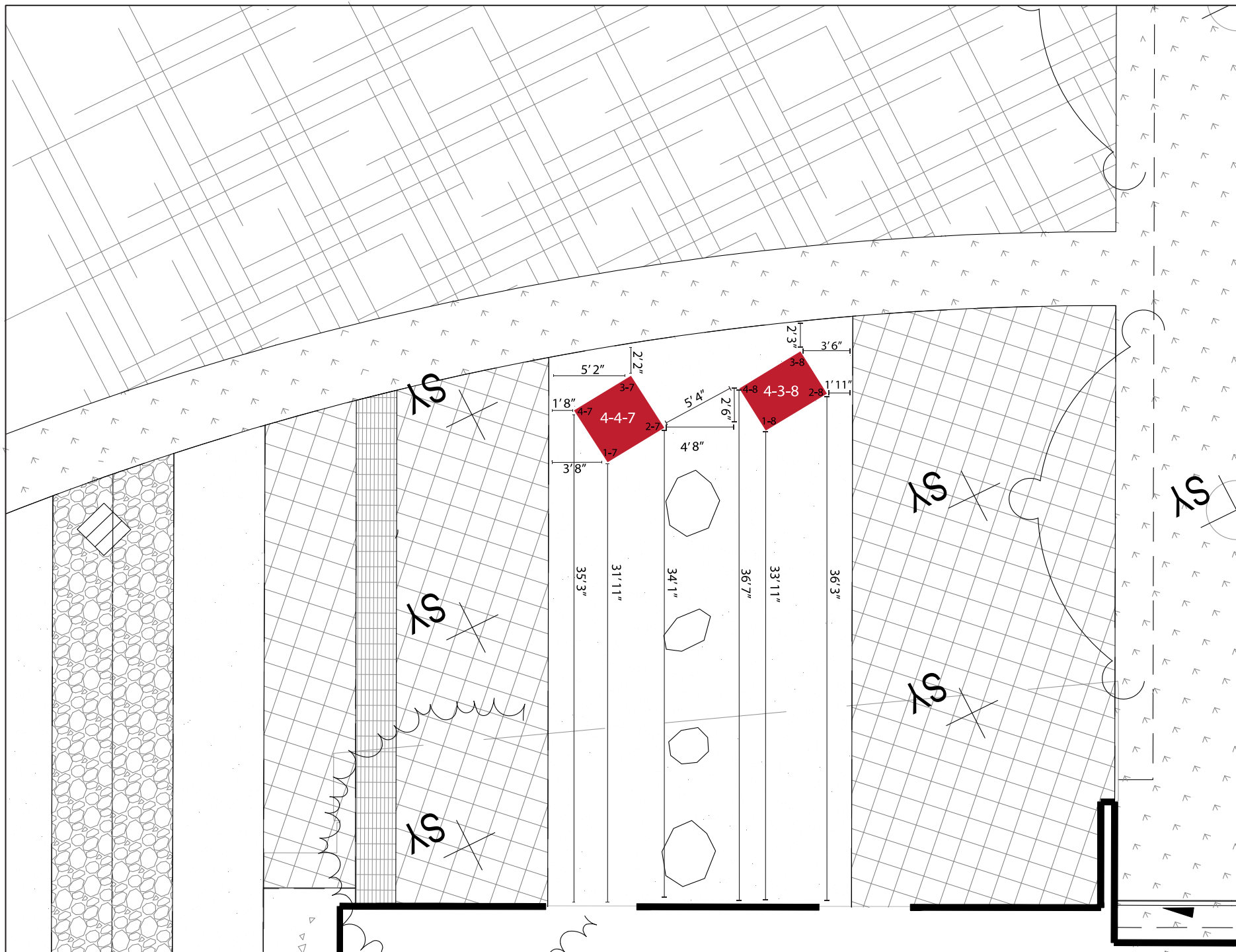
4-4-7



GOLD LEAF INFO:
12 BRICKS
5.31 sqft of gold leaf
~2-3 grams**

** 1 gram of gold leaf = ~3 sqft coverage
(varies depending of what type of leaf is used)

CONSTRUCTION PROCESS



CORNER LABELS:

PYRAMID: 4-4-7

(1-7)

(2-7)

(3-7)

(4-7)

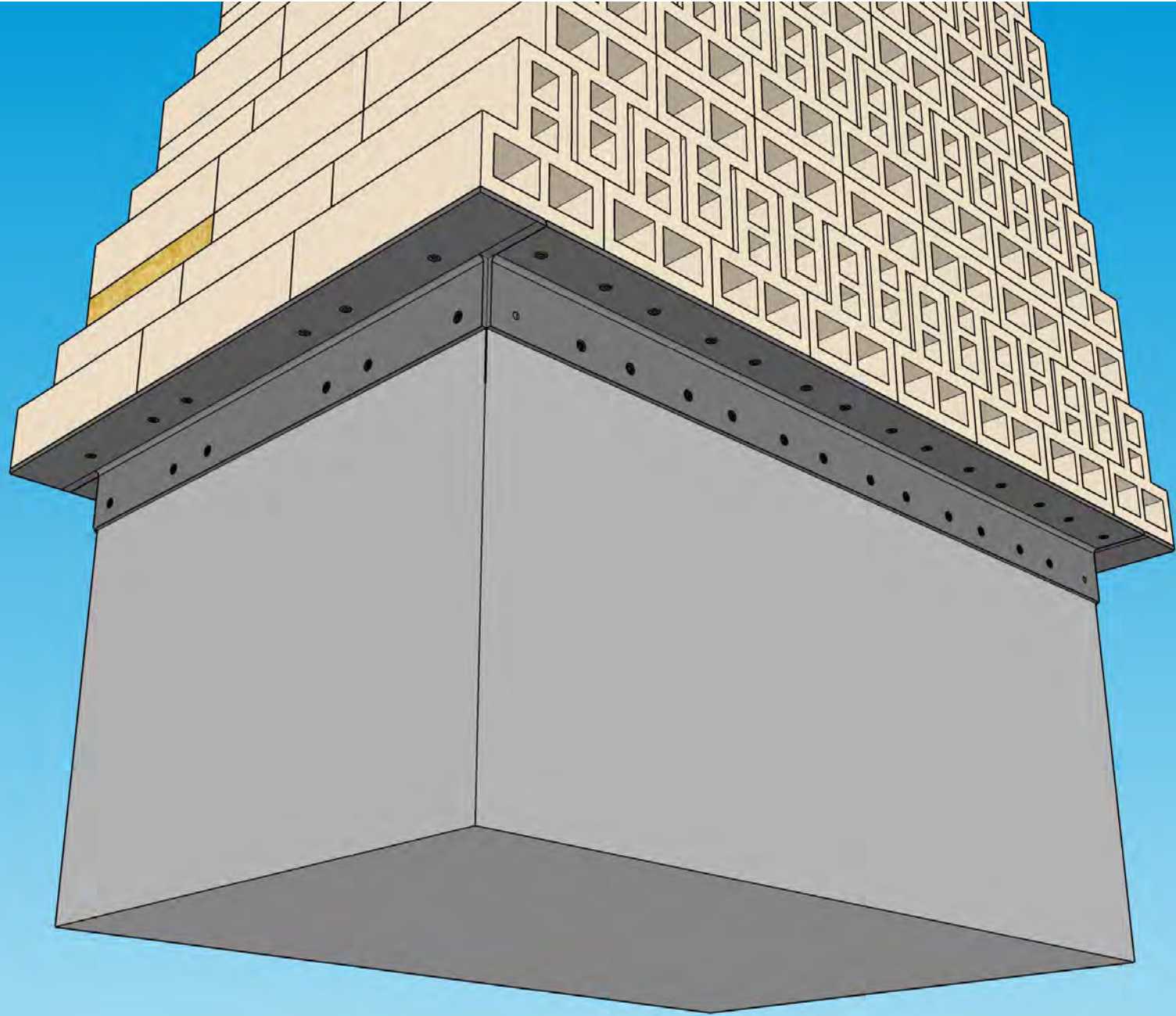
PYRAMID: 4-3-8

(1-8)

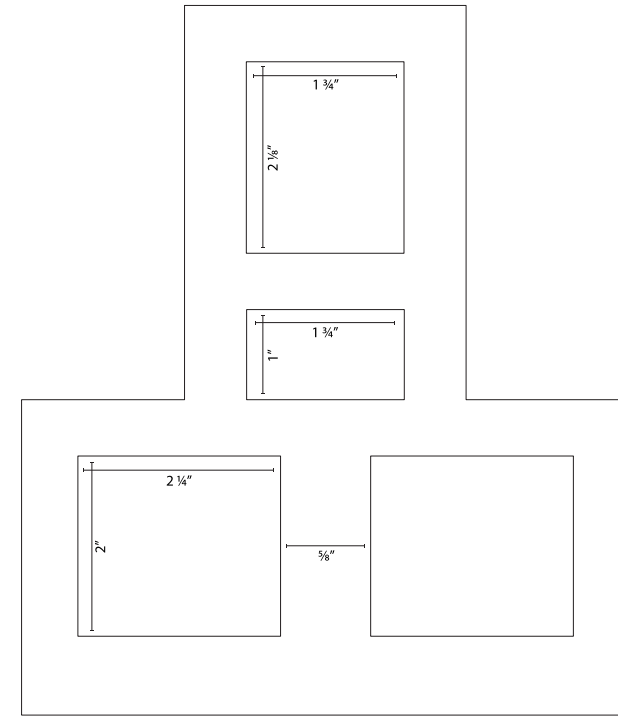
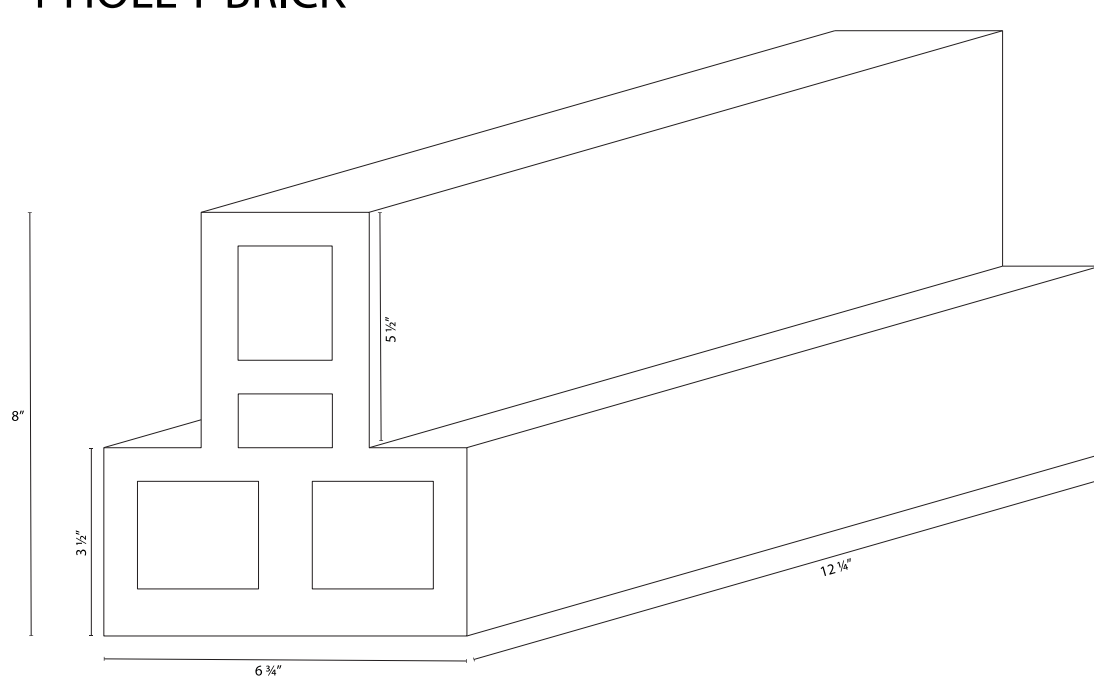
(2-8)

(3-8)

(4-8)

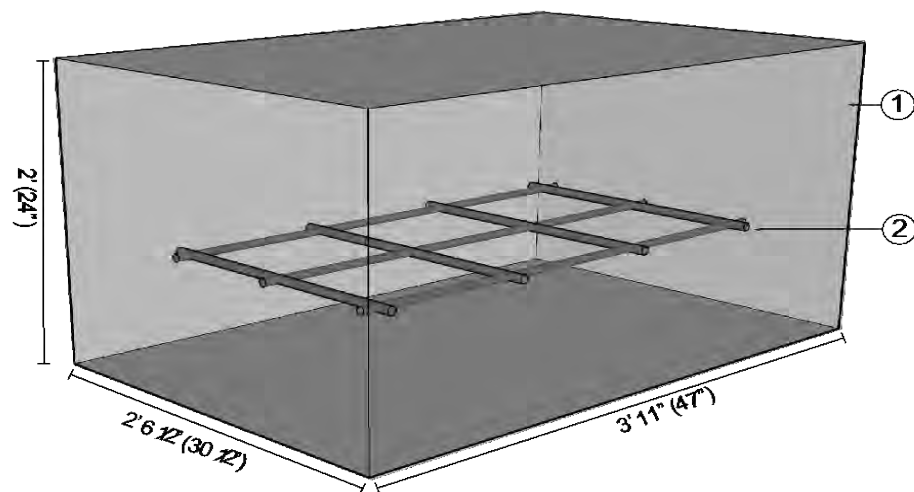
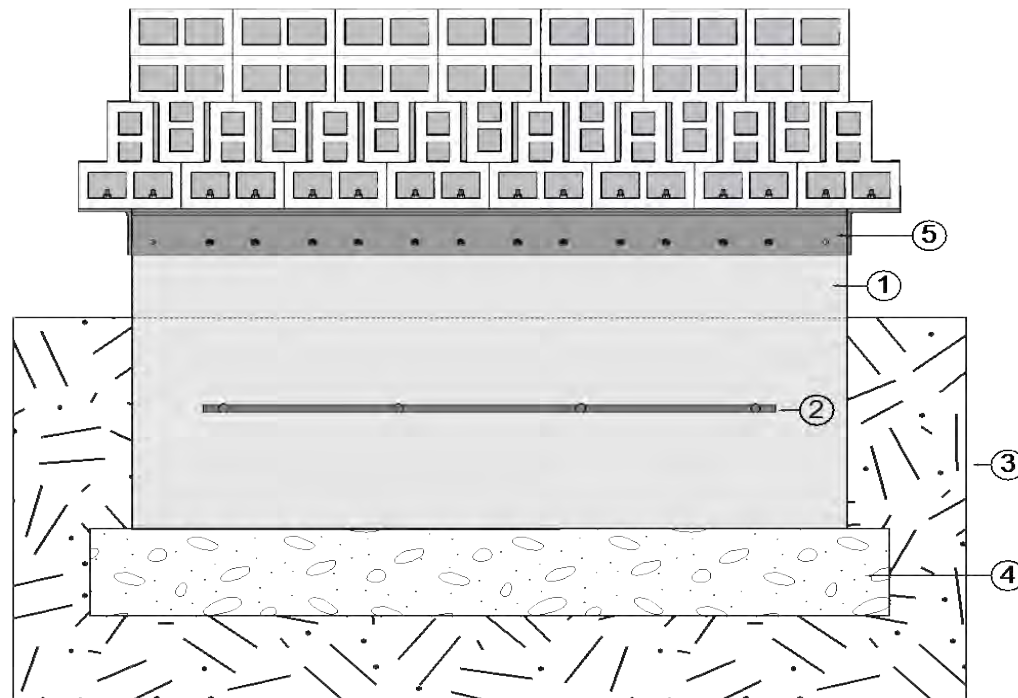


4-HOLE T-BRICK



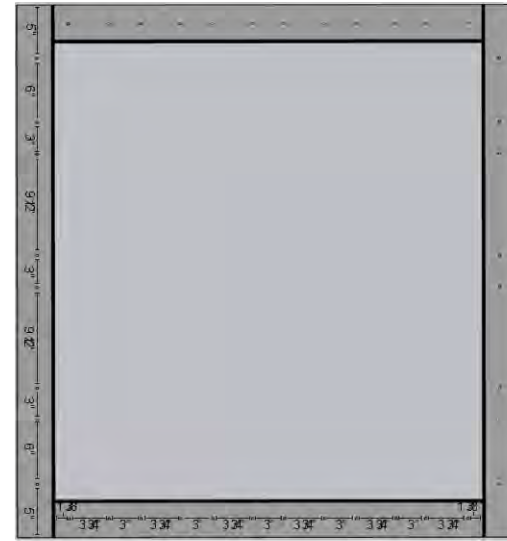
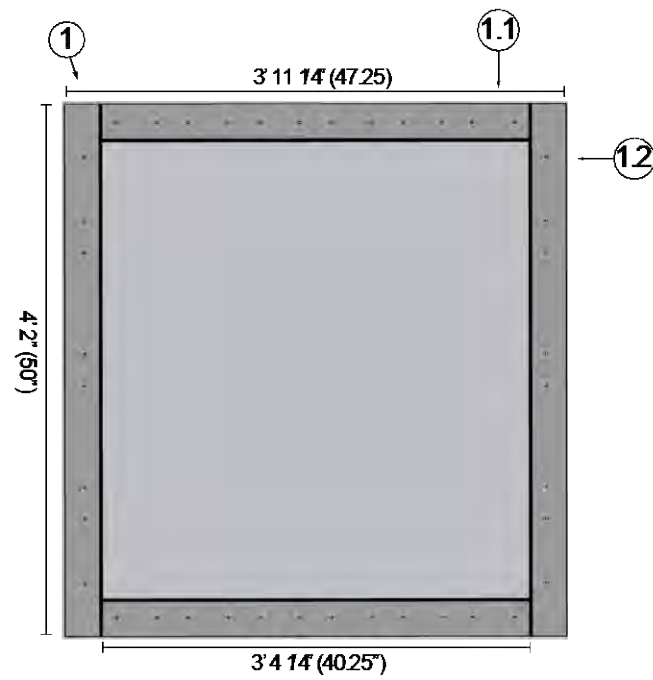
16.5 lbs each

NOTE: Bricks are reclaimed, dimensions may slightly vary.

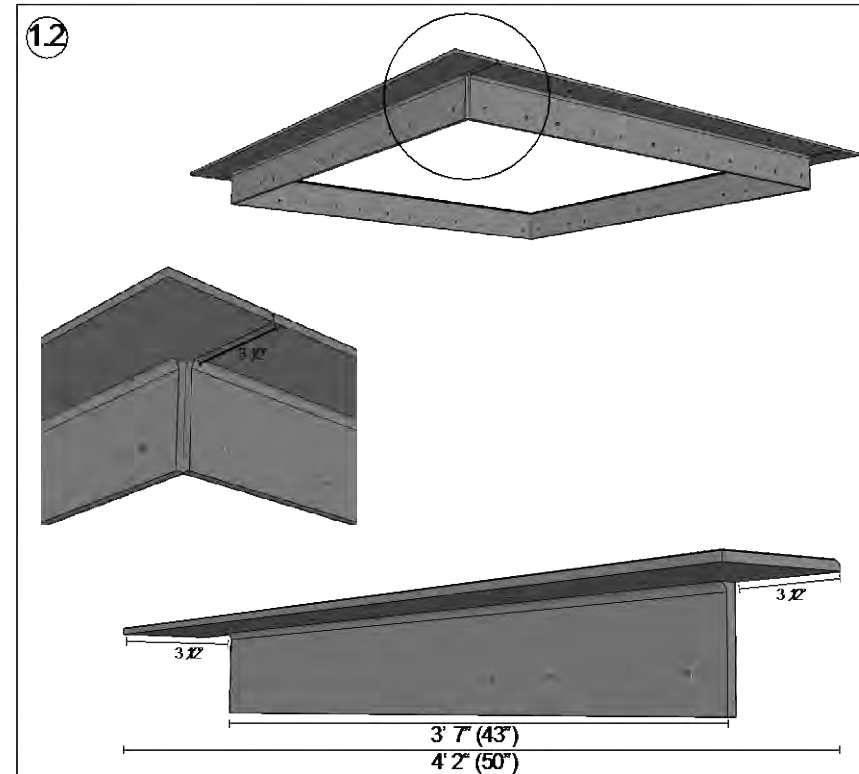
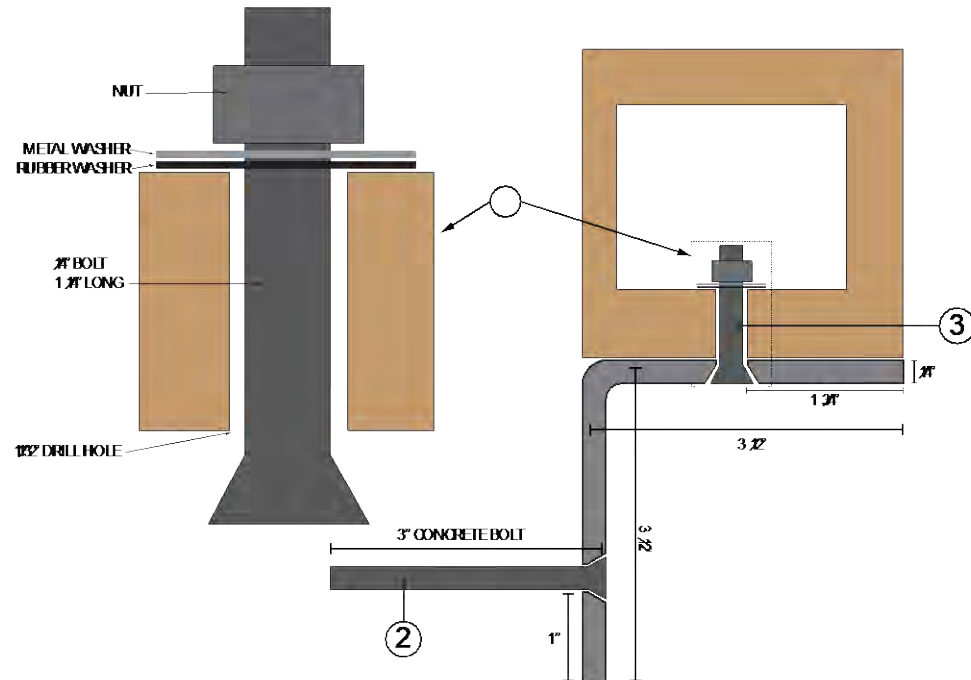


1. CONCRETE FOUNDATION:
 - A. 3' 11" (47") x 2' 6 1/2" (30 1/2") x 2' (24")
 - B. Volume: 0.737 yd³ (19.91 ft³)
 - C. 3,000 psi concrete
2. REBAR
 - A. #5 rebar (5/8" thick)
 - B. Placed 6" from each side and bottom
 - C. (3) 1' 9 3/8" lengths
 - D. (3) 3' 1 5/8" lengths
 - E. Spaced ~10" apart
3. SOIL
4. COMPACTED GRAVEL BASE
5. ANGLE IRON BRACKETS (see pg. 2)





1. ANGLE IRON: 3' 1/2" x 3' 1/2" x 1/4" thick
 - 1.1 (2) 3' 4" (40 1/4")
 - 1.2 (2) 4' 2" (50") top lengths, 3' 7" (43") bottom lengths (see detail below)
2. CONCRETE BOLT: 3" long, 1/4" thick
3. BRICK BOLT: 1' 1/2" long, 1/4" thick



MARGO SAWYER

119 Central Avenue, Elgin, TX
512.661.8689

www.margosawyer.com

© 2023 by Margo Sawyer
All rights reserved. These drawings,
designs, ideas represented in any portion
hereof may not be reproduced or used
in any manner whatsoever without the
express written permission of the artist.



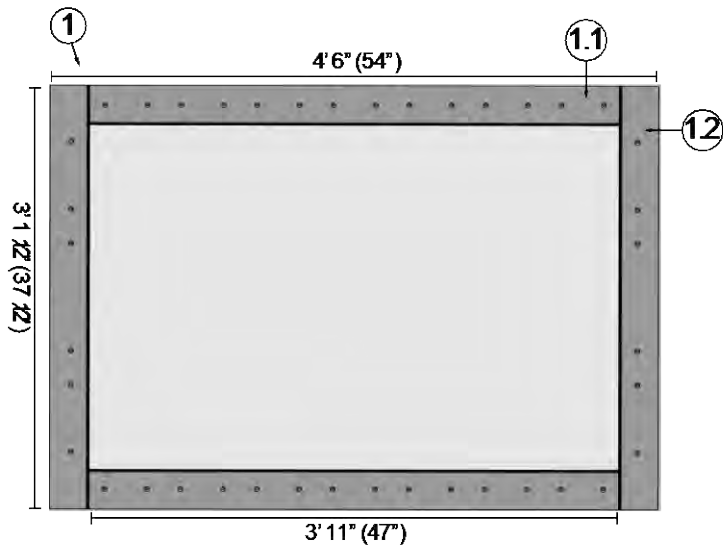
PROJECT
AUSTIN FIRE STATION 51/ EMS 40
LOCATION
5410 US-290, AUSTIN, TX 78749

DATE
AUGUST 17, 2023

DOCUMENT TITLE
4-4-7 PYRAMID
SPECS

VERSION
ANGLE IRON +
BOLTS

pg. 2
Files Generated by Daisy Banner
Engineering by Jerry Gartin
of Stuckers Engineering



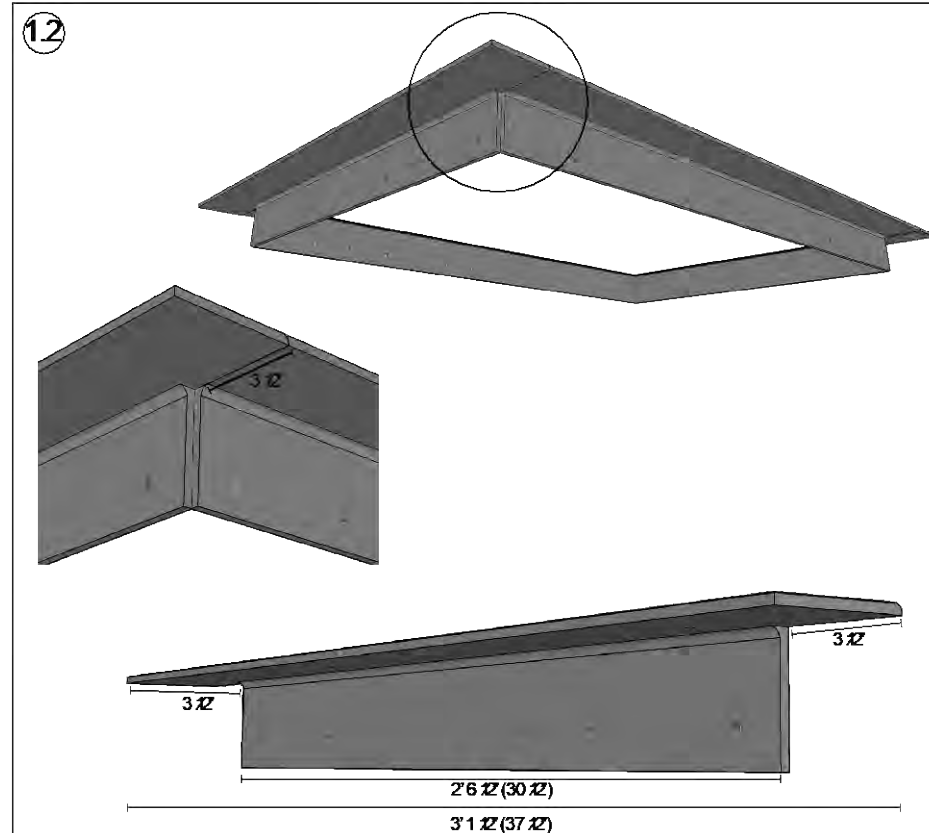
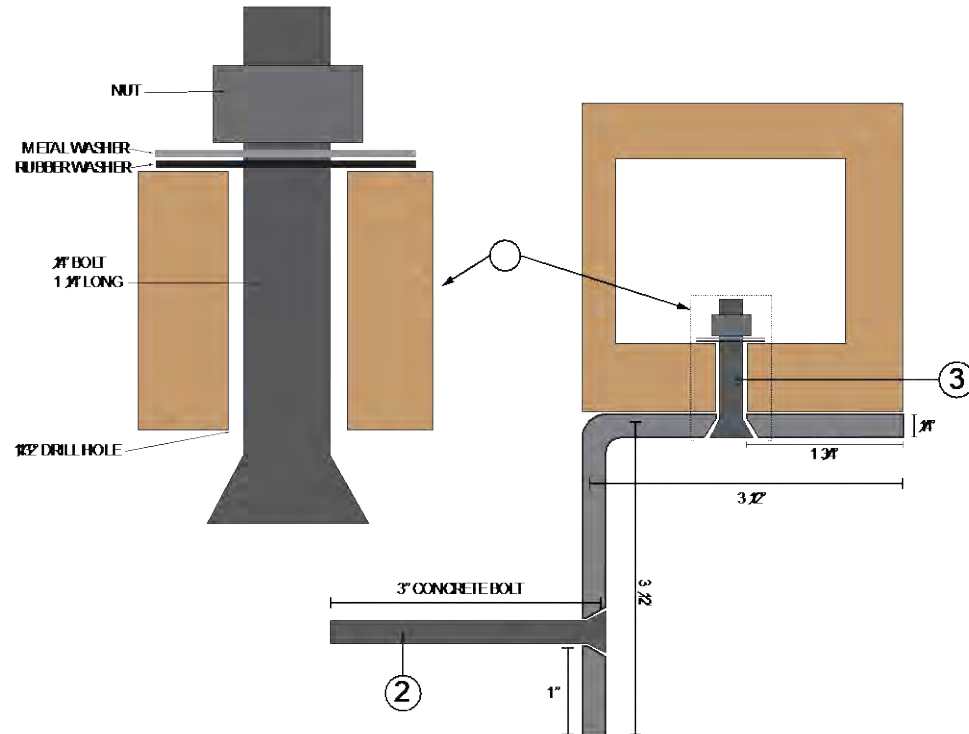
1. ANGLE IRON 3 1/2" x 3 1/2" x 1/4" thick
 - 1.1 (2) 3'11" lengths (47")
 - 1.2 (2) 3'1 1/2" (37 1/2") top lengths, 2'6 1/2" (30 1/2") bottom lengths (see detail below)
2. CONCRETE BOLT: 3" long, 1/4" thick
3. BRICK BOLT: 1 1/2" long, 1/4" thick

MARGO SAWYER

119 Central Avenue, Elgin, TX
512.661.8689

www.margo-sawyer.com

© 2023 by Margo Sawyer
All rights reserved. These drawings, designs, ideas represented in any portion thereof may not be reproduced or used in any manner whatsoever without the express written permission of the artist.



PROJECT
AUSTIN FIRE STATION 51/ EMS 40

LOCATION
5410 US-290, AUSTIN, TX 78749

DATE
JULY 31, 2023

DOCUMENT TITLE
4-3-8 PYRAMID
SPECS

VERSION
ANGLE IRON +
BOLTS

pg. 2

Files Generated by Bailey Bannor

Engineering by Jerry Cowdin
of Saunders Engineering

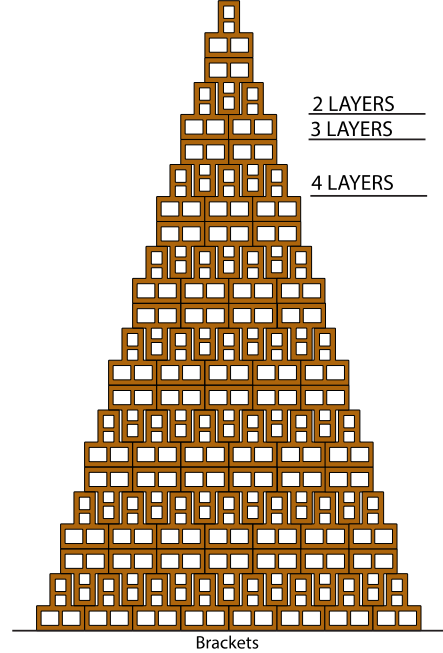
Fast and effective bonding solutions

The **3M Double-Sided Foam Tapes** range will help you find the right bonding solution for your requirements.

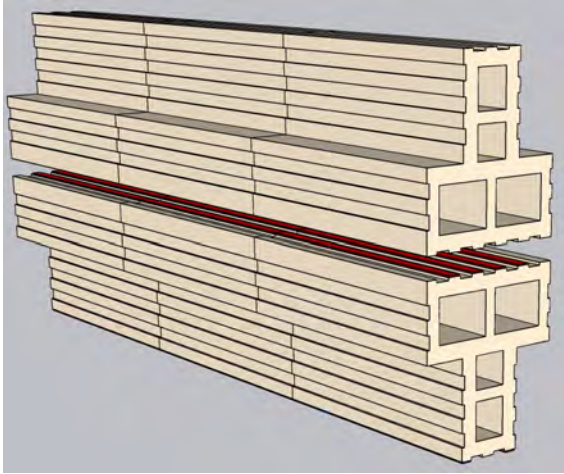
Double-Sided Foam Tapes help seal, cushion and damp vibration, fill gaps and bond irregular surfaces. For **lightweight bonding solutions** in an outdoor environment, **3M Soft Sealing Joining Tapes** provide the perfect solution for bonding to uneven surfaces such as brick, concrete and wood. For indoor use, **3M Multi-purpose Mounting Tapes** can be used on most surfaces and are ideal for attaching lightweight objects.

For **heavy duty bonding requirements**, **VHBTM Tapes** are a family of double-sided tapes made from high performance acrylic adhesives, providing excellent long term durability and holding power. VHBTM Tapes have been performing successfully in a wide range of long term and demanding applications for over 25 years, including sign assembly, bonding metal panels to frames and as a replacement for screws and rivets.

As well as a range of cost-effective general purpose VHBTM Tapes, 3M also offers a specialized range designed for tough applications such as cold temperature application; bonding to plastics, metals, glass and powder coated paints; and where high temperature resistance is needed.

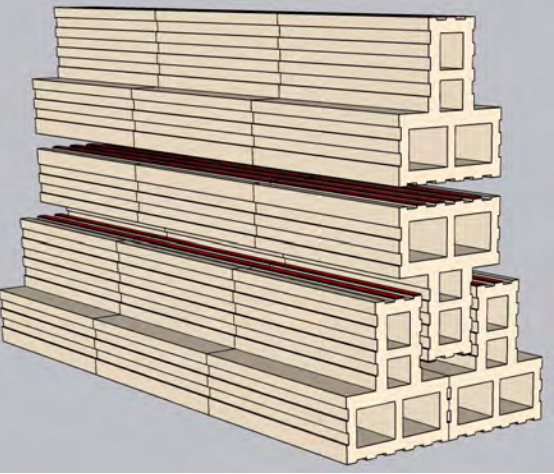


2 LAYERS



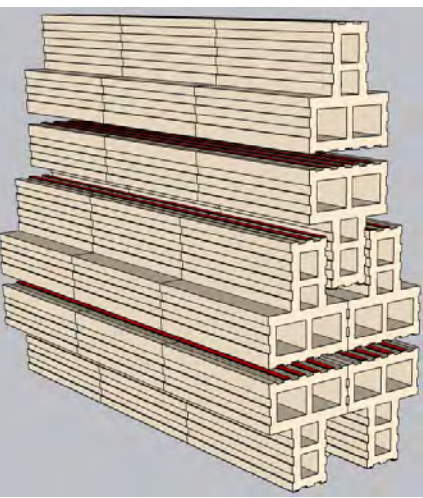
6 BRICKS, 99 lbs

3 LAYERS

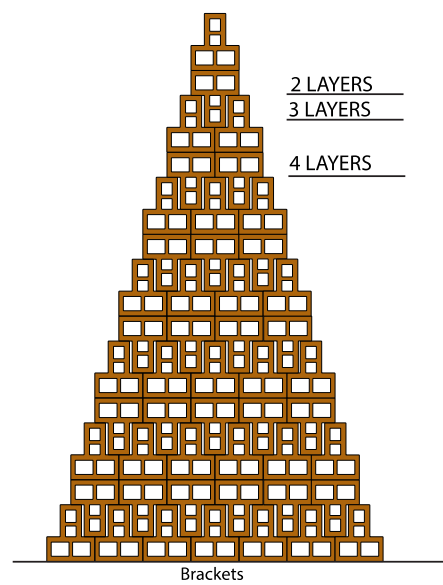


*12 BRICKS, 198 lbs
*Artist and engineer recommended

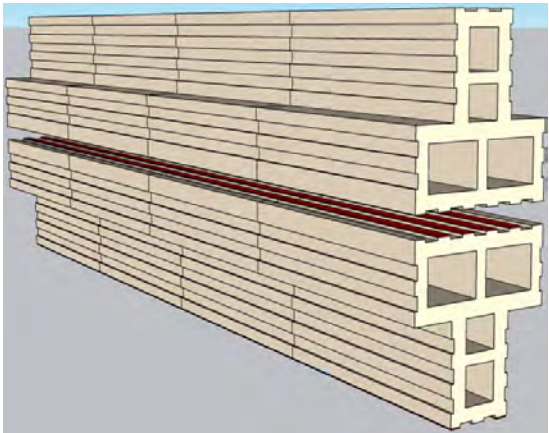
4 LAYERS



18 BRICKS, 297 lbs

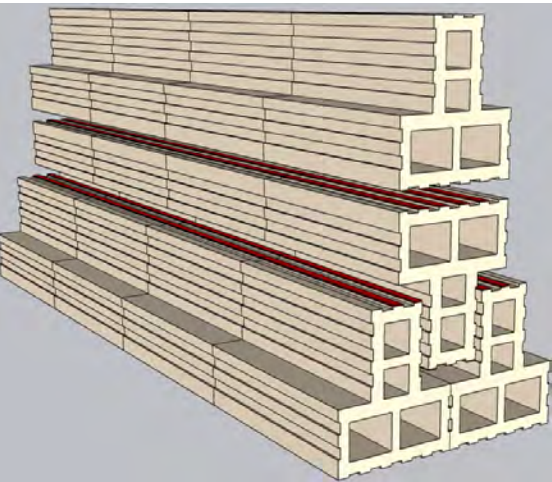


2 LAYERS



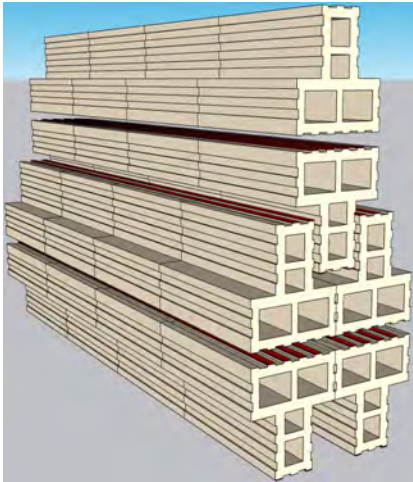
*8 BRICKS, 132 lbs
*Artist and engineer recommended

3 LAYERS



16 BRICKS, 264 lbs

4 LAYERS



24 BRICKS, 396 lbs



AEC FOR NON-COMPLIANT GRAVEL MULCH

COMPLIANT AREAS	NON-COMPLIANCE	PROPOSED AEC
TOTAL REQUIRED LANDSCAPING AREA FOR PARKING LOT = 1,140 SF 20% COMPLIANT GRAVEL = 4,989 SF	NON COMPLIANT GEOGRID - LARGE OPEN SPACE BEHIND BLDG = 1,606 SF (-5 PTS.)	WILDFLOWER MEADOW: 10,708 SF (SPECIAL LANDSCAPE FEATURE +5 PTS PER ECM 2.5.0)
TOTAL REQUIRED LANDSCAPING AREA FOR SY = 4,989 SF 20% COMPLIANT GRAVEL = 998 SF	NON COMPLIANT GRAVEL MULCH = 2,110 SF (-10 PTS.)	INCREASE CALIPER OF 50% OF STREET YARD TREES TO 3": 8 TREES INCREASED TO 3" CALIPER (+10 PTS. PER ECM 2.5.0)
		ADD FOUR PRODUCTION COMPONENT TO PROJECT: 468 SF ADDITIONAL PLANTING IN THE FORM OF CULINARY HERBS (SPECIAL LANDSCAPE FEATURE +5 PTS PER ECM 2.5.0)
	ADDITIONAL NON-COMPLIANT GEOGRID @ TRASH ENCLOSURE & FUEL STATION = 380 SF (-5 PTS.)	

EX. TREE 502 CHINESE TALLOW INVASIVE 13" (8/2-5") TO BE REMOVED
EX. TREE 503 BRADFORD PEAR POOR CONDITION 8.5" (5"/4/3") TO BE REMOVED

TREE 504
TREE 505
TREE 507

3" CAL. PECAN TREE MITIGATION FOR REMOVAL OF TREE 503
LEVEL SPREADER REF. SH. 6
GENERATOR REF. SH. 9

6' PRIVACY FENCE AROUND TRASH ENCLOSURE REF. DTL. 2 SH.25

STEEL FENCE REF. DTL 3 SH. 25

SEDIMENT/ FILTRATION PONDS REF. SH. 12

STEEL FENCE REF. DTL 3 SH. 25

ELECTRICAL EASEMENT

OVERHEAD ELECTRICAL

ACCESS GATE

6' PRIVACY FENCE REF. DTL 2 SH. 25

2-STORY FIRE/ EMS STATION

ACCESS GATE
STEEL FENCE REF. DTL 3 SH. 25

SECURED PARKING

AUTOMATIC GATE REF. SH. 9

PRIVATE DRIVE

METAL GRATE WALK REF. DTL 1 SH. 24

GRATE INLET REF. SH. 12

DRAINAGE SWALE

4 BAY DOORS

CONCRETE STAGING (3-4 DAYS)

BIKE RACK REF. DTL 6 SH. 24

FLAG POLE REF. DTL 1 SH. 25

STREETYARD

50% REDUCTION IRRIGATION AREA 3,887 SF REF. SH. 12

SEEDED WILDFLOWER AREA 10,708 SF

LARGE SHRUBS (13), 5'-6" FOR PARKING LOT BUF
MAILBOX REF. DTL 5 SH. 23
LARGE SHADE TREE 2" CAL. FOR PARKING LOT BUFFER
MONUMENT SIGN REF. DTL 7 SH. 23

LARGE SHRUB (5 GAL.) FOR PARKING LOT BUFFER

ARTIST TEAM

ARTIST: Margo Sawyer, FAR '87

ARTISTS ASSISTANTS:

Bailey Barrow
Madelaine Hamilton
Asmita Dahal

ENGINEERING:

Jerry Garcia Founding Principal
STRUCTURES TEXAS

CONSTRUCTION COMPANY AND OR SUB CONTRACTORS:

Interviewing various companies
Brady Foster Metal Fabrication

ENGINEERING SUGGESTIONS OF THE ARTWORK BY JERRY GARCIA OF STRUCTURES

CLEAN THE BRICK AND SORT FOR REGULAR SIZES

RECOMMEND DRY STACKING OF BRICK, AND SECURE TOP AND BOTTOM

SECURE FOUNDATION WITH A PARIMETER FRAMING TO SECURE THE FOUNDATION

THE WEIGHT OF THE ARTWORK WILL SECURE THAT IT WILL NOT MOVE, AS LONG AS THE PARIMETER IS SECURED

USE OF 3M TAPE TO SECURE THE TOP, WHICH IS THE MOST VULNERABLE, 2-3 LAYERS

3M TAPE IS OK FOR A MINIMUM HEAT OF 120 DEGREES AND WILL PREFORM WELL

CONSERVATION SUGGESTIONS OF THE ARTWORK BY JULIE UNRUH

CONSERVATION OF ART AND ARCHEOLOGICAL OBJECTS

THE ART WORK IS RAISED FROM THE GROUND 6" ABOVE GRADE.

IRRIGATION IN THE AREA MAY CREATE SALT MINERAL DEPOSITES ON THE BRICK.

DRY STACKING OF BRICK, AND SECURE TOP AND BOTTOM, THIS WILL HELP IF THE ART WORK NEEDS TO MOVED.

SEAL OF THE BRASS GOLD LEAF

NO NEED TO SPRAY A SEALER ON THE BRICK

PROCESS FOR BUILDING OF THE ARTWORK

PALATE ALL THE BRICK MATERIALS AND STORE

TOOLS

SHOVELS, HAMMERS, MALETS, TAMPER, WHEEL BARROW
CEMENT MIXER, TARP, SAW,
PALATE JACK, 23 FT TRUCKS & OR TRAILERS

TRANSPORT BRICK MATERIAL TO THE SITE: SECURE STAGING ON SITE:

SUGGEST FRONT PARKING SPACE

SITE PROTECTION:

PLYWOOD AND TARP TO PROTECT THE HARDSCAPE AND LANDSCAPE

FOUNDATION:

DIG TWO HOLES FOR THE FOUNDATION,
GRAVEL AT THE BOTTOM OF HOLE
THEN LAYER OF SAND TO TAMP DOWN LEVEL
PLACE SECTIONS OF FORM WORK AND TIE TOGETHER
ADDBRACING TO FORM WORK

FOUNDATION

CAST IN PLACE TWO CONCRETE FOUNDATION. FORM WORK, REBAR, CEMENT AGITATOR. DUE TO THE SMALL SCALE THE USE OF A CEMENT MIXER.

PYRAMID CONSTRUCTION:

METAL FRAME BOLTED TO THE TOP OF FOUNDATION, AND THE PERIMETER OF BRICK.
PYRAMIDS ON CONCRETE FOUNDATION, METAL PINS TO TIE TO FOUNDATION
BRICK TO BE LAYED AND SECURED WITH HIGH BOND 3M TAPE.

JULY 28 2023	
MARGO SAWYER BUDGET ESTIMATE	TRANSFORMATION
ARTIST FEE 15%	17,700
DESIGN	9,000
DESIGN DEVELOPMENT	8,000
CONSTRUCTION DOCUMENTS	4,000
ENGINEERING : STRUCTURES	7,000
MATERIAL TESTS	2,000
MOUNTING BRACKET & HARDWARE	2,800
BRICK FINISHING	5,000
MATERIALS: BRICK	41,000
BUILDING PERMIT	500
BASE FABRICATION	5,000
SHIPPING	3,000
INSTALLATION	10,000
TRAVEL	1,000
CONTINGENCY	2,000
TOTAL COST	118,000
THESE ARE GENERAL ESTIMATES	

MAINTENANCE

PYRAMIDS:

A ONCE A YEAR CLEAN OF THE ARTWORK:

BLOW OFF LEAF AND DEBRI FROM PYRAMID

CLEAR AWAY PLANT GROWTH & DEBRI THAT IS TO CLOSE TO THE ARTWORK

REGULAR TENDING TO THE LANDSCAPE IN THE AREA THAT THE ART WORK IS IN IS RECOMENDED