

AUSTIN FIRE DEPARTMENT

Wildfire Readiness Update

Andre de la Reza – Assistant Chief

Justice Jones – Wildfire Mitigation Officer

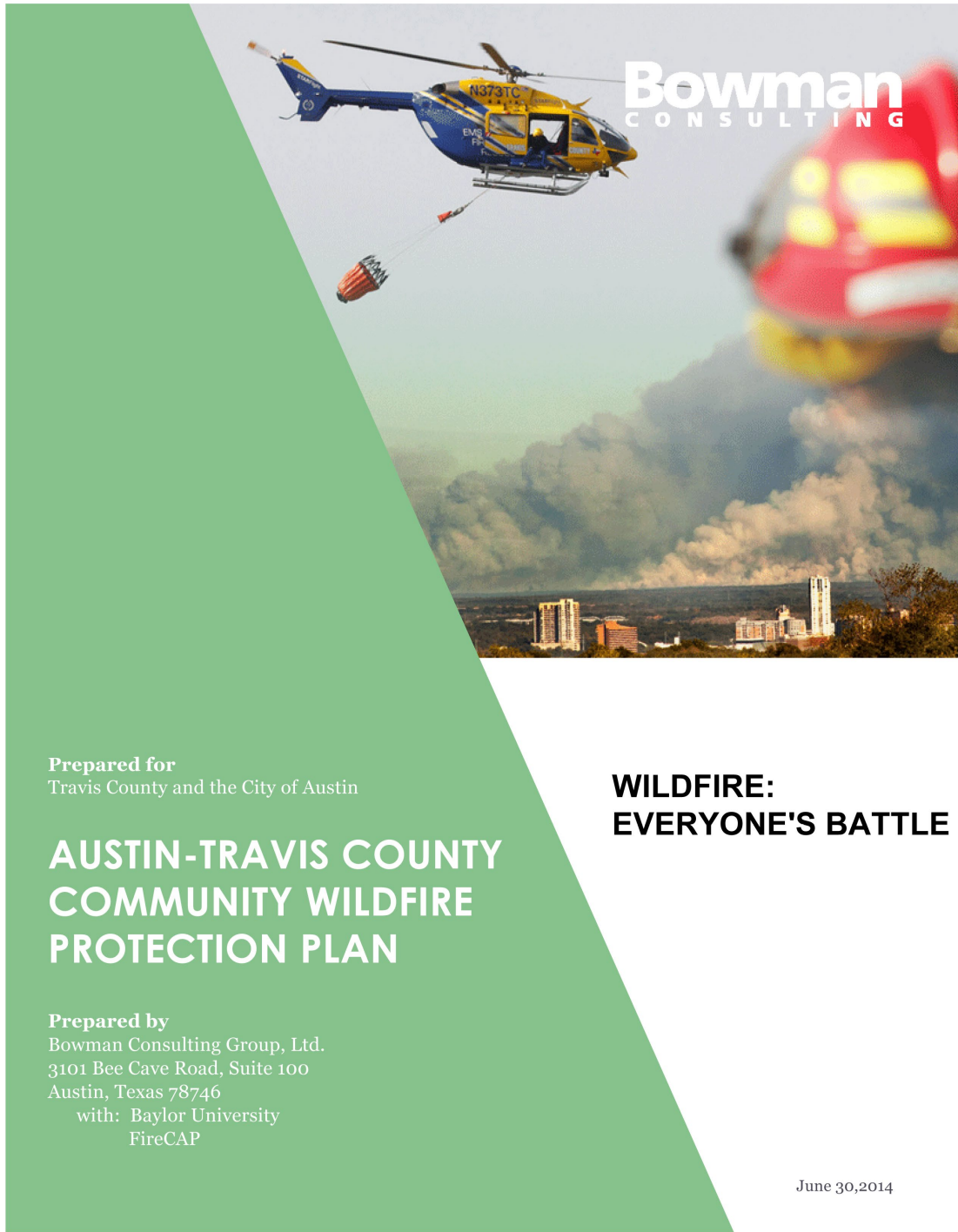
"Provide a progress report every six months to the Public Safety Commission for the following important components of a comprehensive WUI risk reduction plan."

Council Resolution NO. 20160512-016

Real-time report through dynamic data available at:

<https://bit.ly/3EUhWWF>

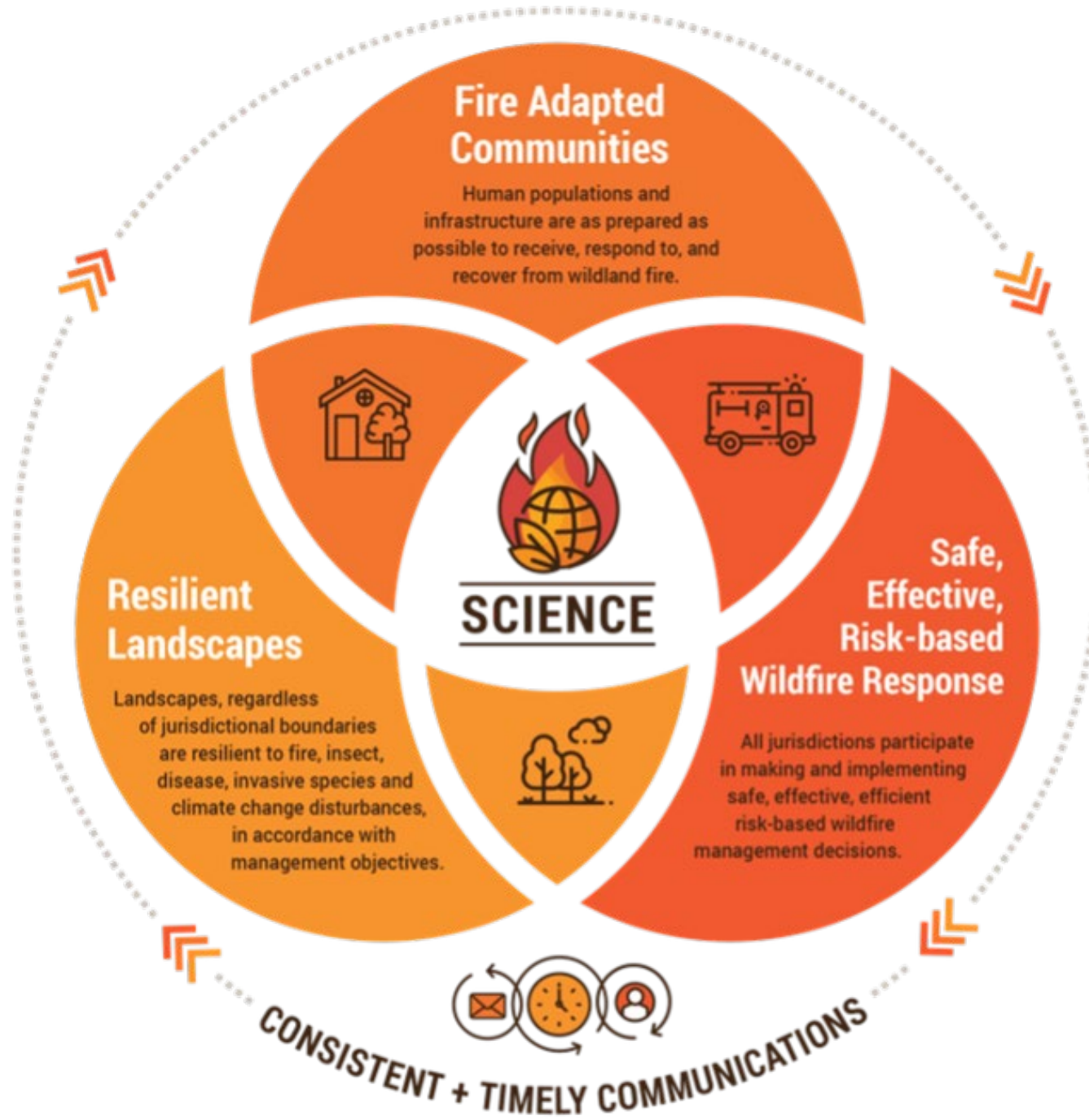




A Community Wildfire Protection Plan determines what is at risk and provides a roadmap of actions for a community to address the wildfire threat.

- **In 2014 Austin and Travis adopted the first Cohesive Wildland Fire Management Strategy based, Community Wildfire Protection Plan(CWPP)**
- **Over the last 9 years departments across both jurisdictions have worked tirelessly to implement the mitigation measures identified in the CWPP**
- **We have received a USFS Grant to update the current plan to reflect our accomplishments and establish new goals to help us enhance our communities' wildfire resiliency**

Community Wildfire Protection Plan Update



The following areas will be the focus of our updated plan.

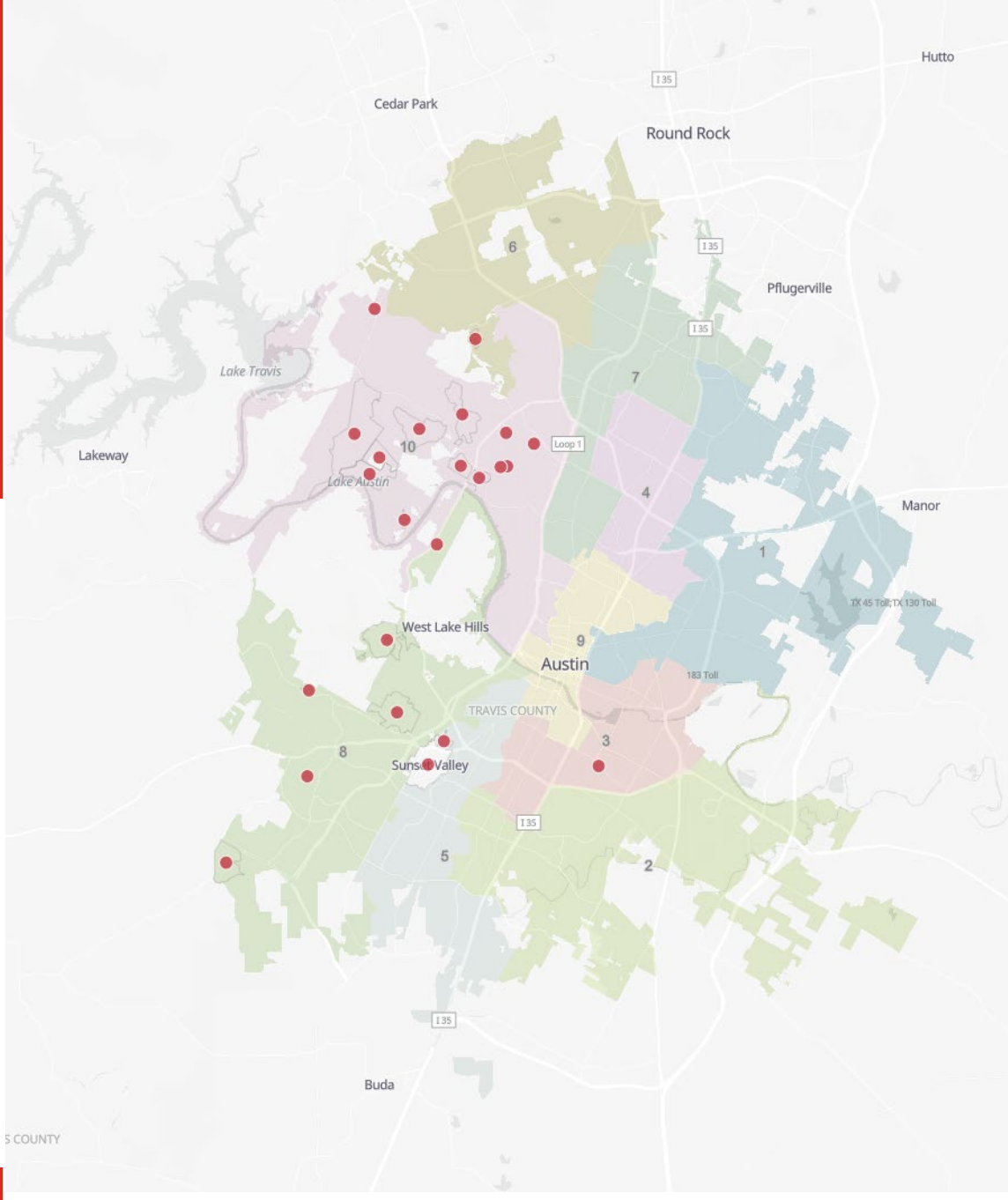
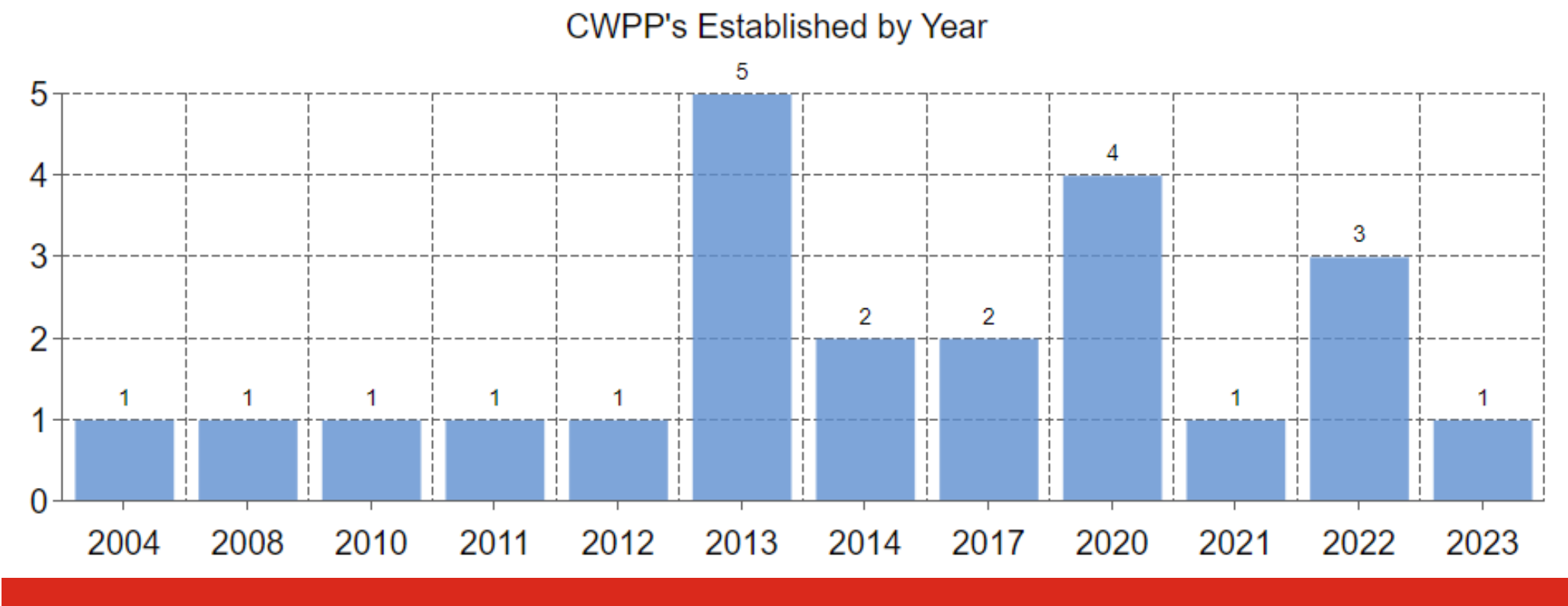
- Risk analysis
- Community resilience (preparation, response, and recovery)
- Climate impact projections
- Workforce capacity, health, and wellbeing
- Diversity, equity, inclusion (DEI) and environmental justice (EJ)
- Accessibility

Community Wildfire Protection Plan Update

The number of local CWPP's completed and implemented is **23**.

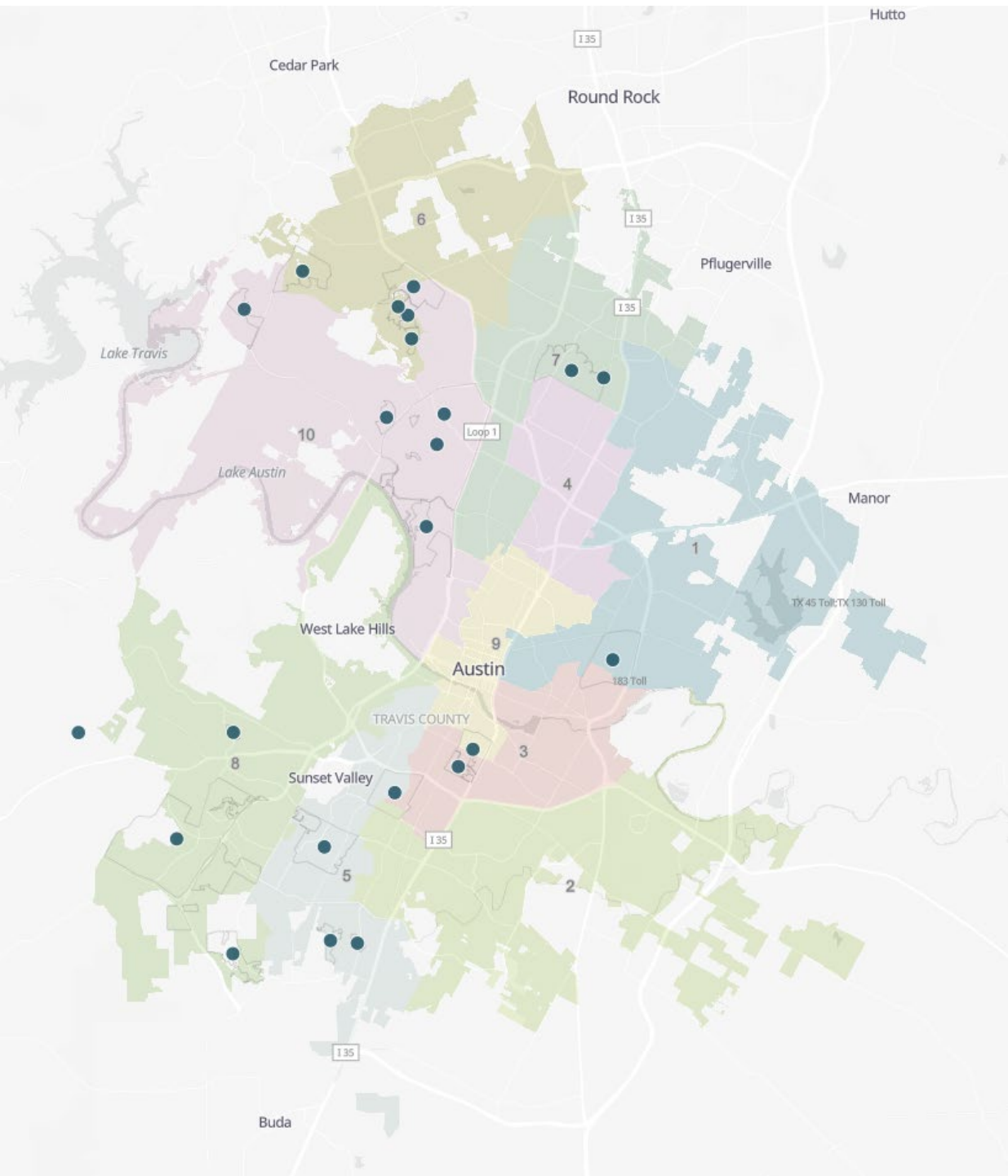
Local level CWPP’s are community led initiatives that AFD facilitates and supports. In 2022, we were pleased to welcome Barton View as a **new** Firewise Community.

AUSTIN CWPP’s

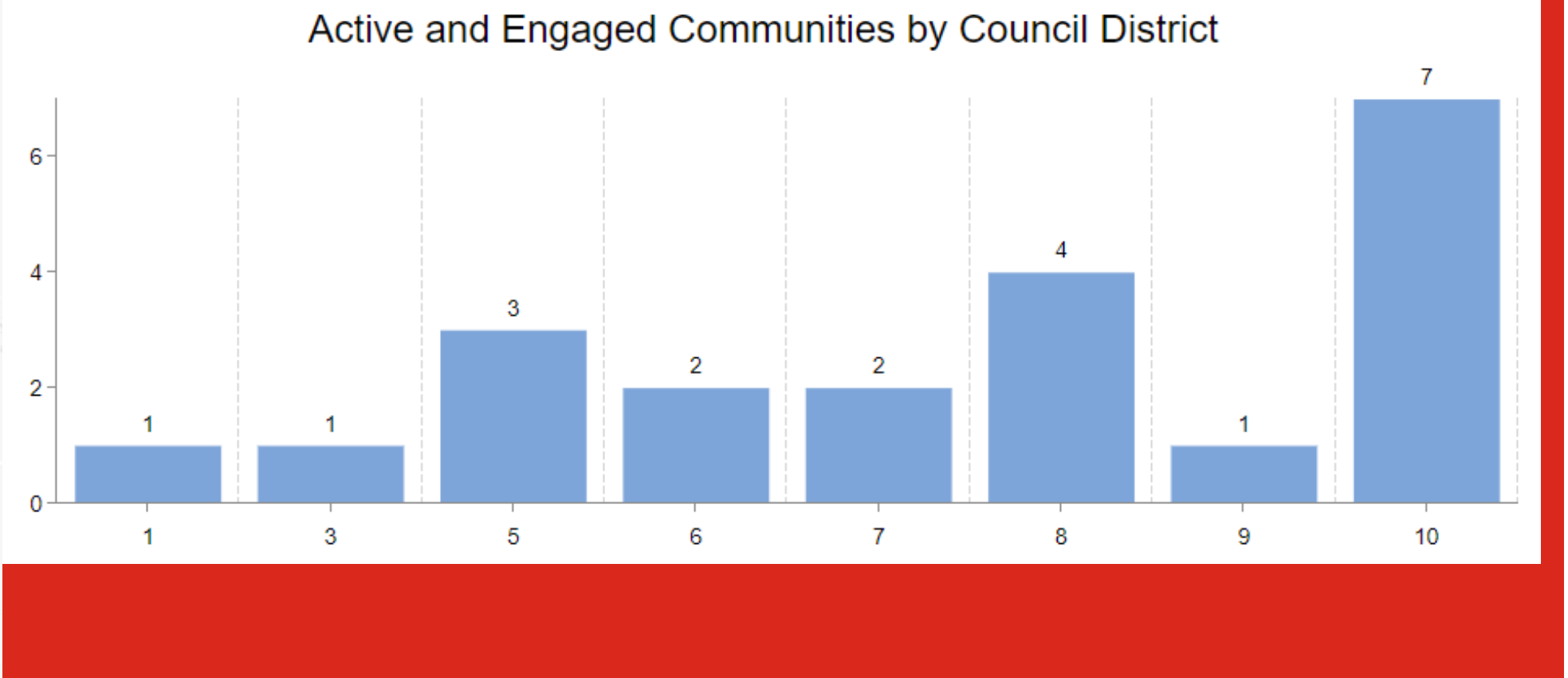


The number of local CWPP's started but not completed is **23**.

Local level CWPP’s are community led initiatives that AFD facilitates and supports.



Active & Engaged

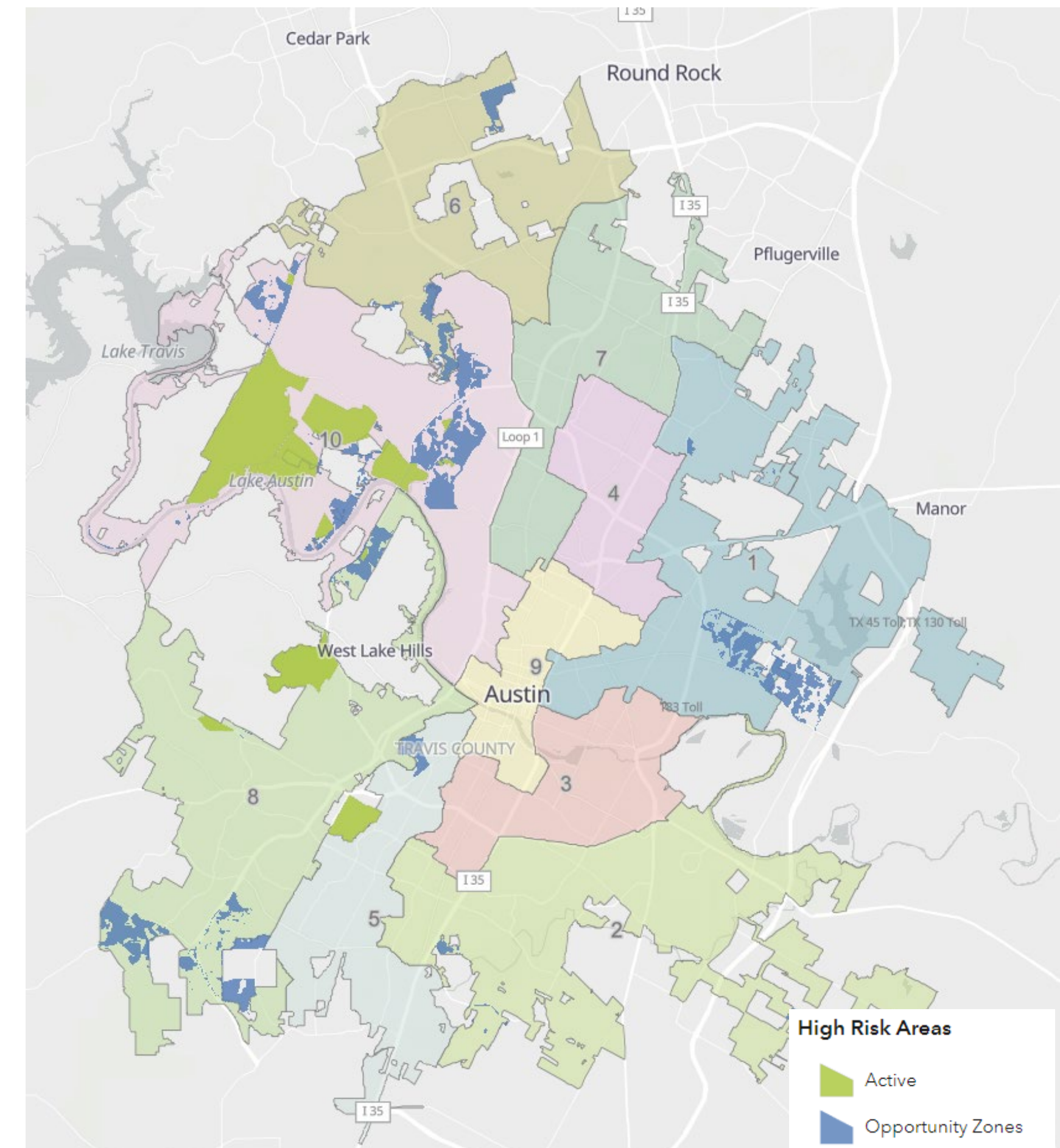
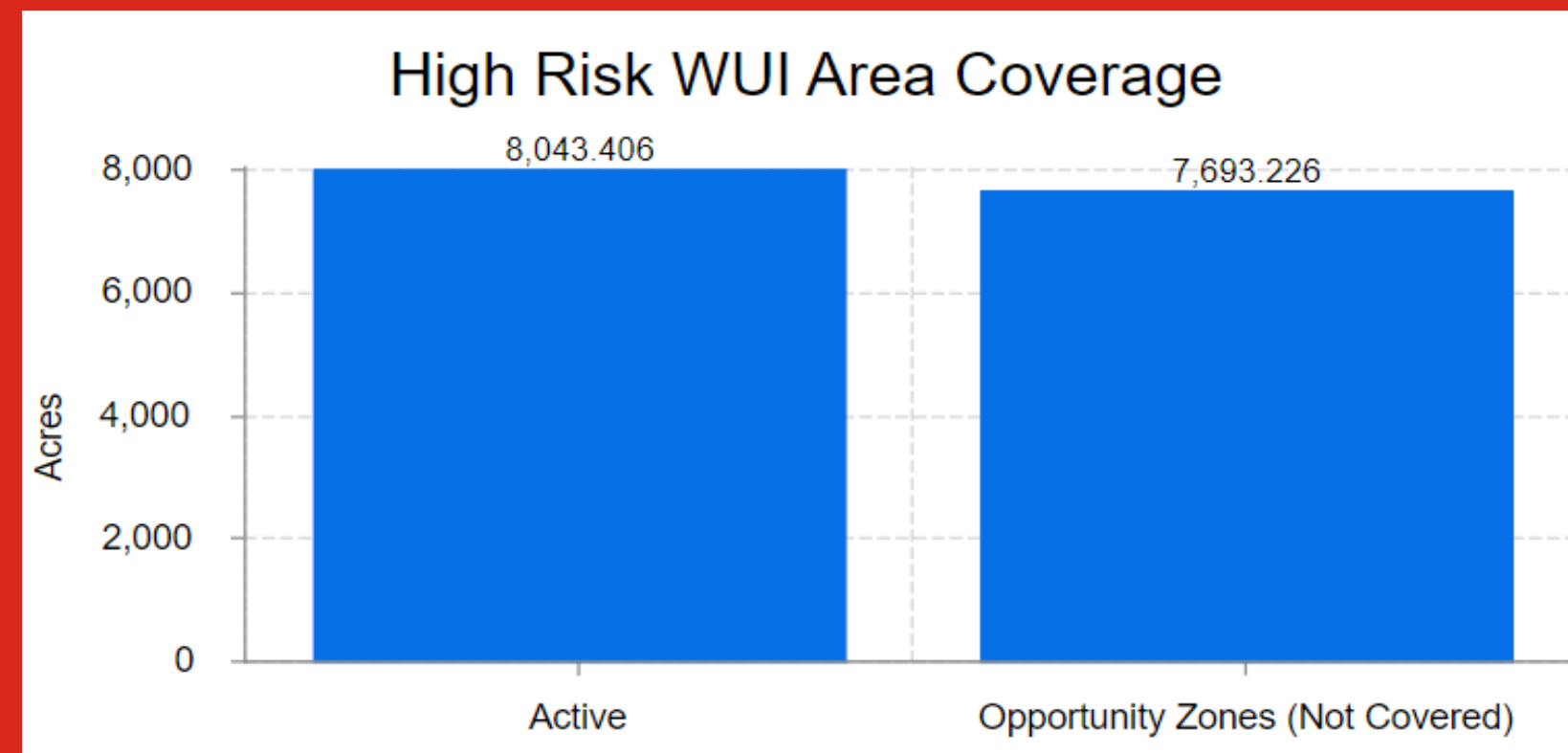




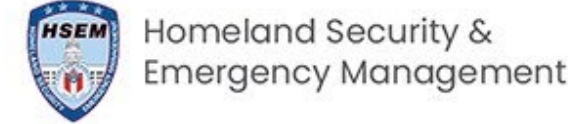
The percentage of high-risk WUI areas in which identification of potential local CWPP planning areas is still ongoing is **49%**.

Of the 14% of Austin classified as high risk, 51% is covered by a local level CWPP, **49%** are identified as opportunity zones.

High Risk Areas



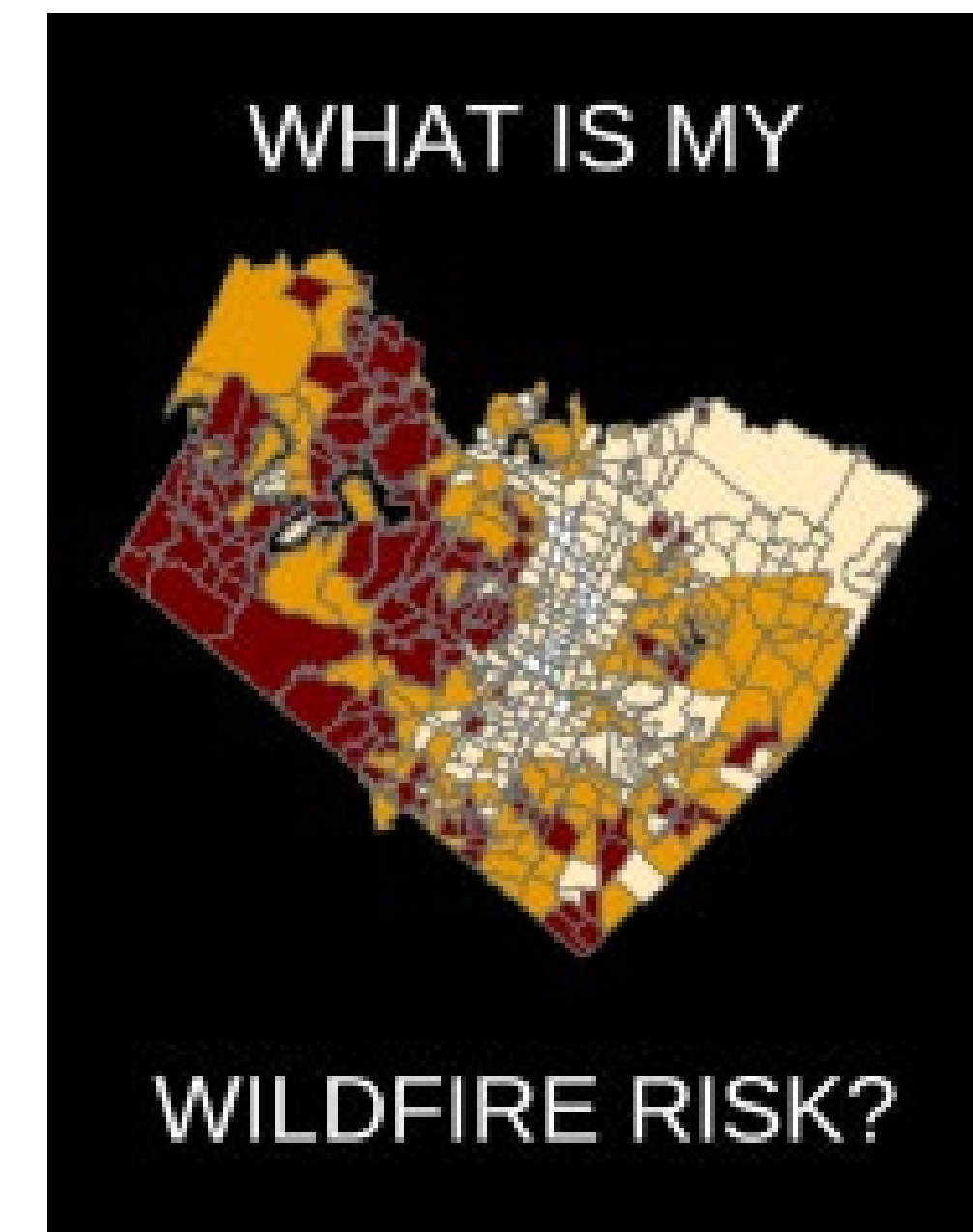
Sign up for wildfire notifications and warnings at



Empowerment and Partnership

- Preparedness Townhall meetings in at risk areas across Austin
- Marketing campaign leveraging social and traditional media
- Refined the emergency notification processes and utilized the system to warning the public on high-fire danger days
- Hosted the annual Community Wildfire Preparedness Symposium
- Provided tools for understanding current conditions and wildfire risk

2023 Education and Outreach

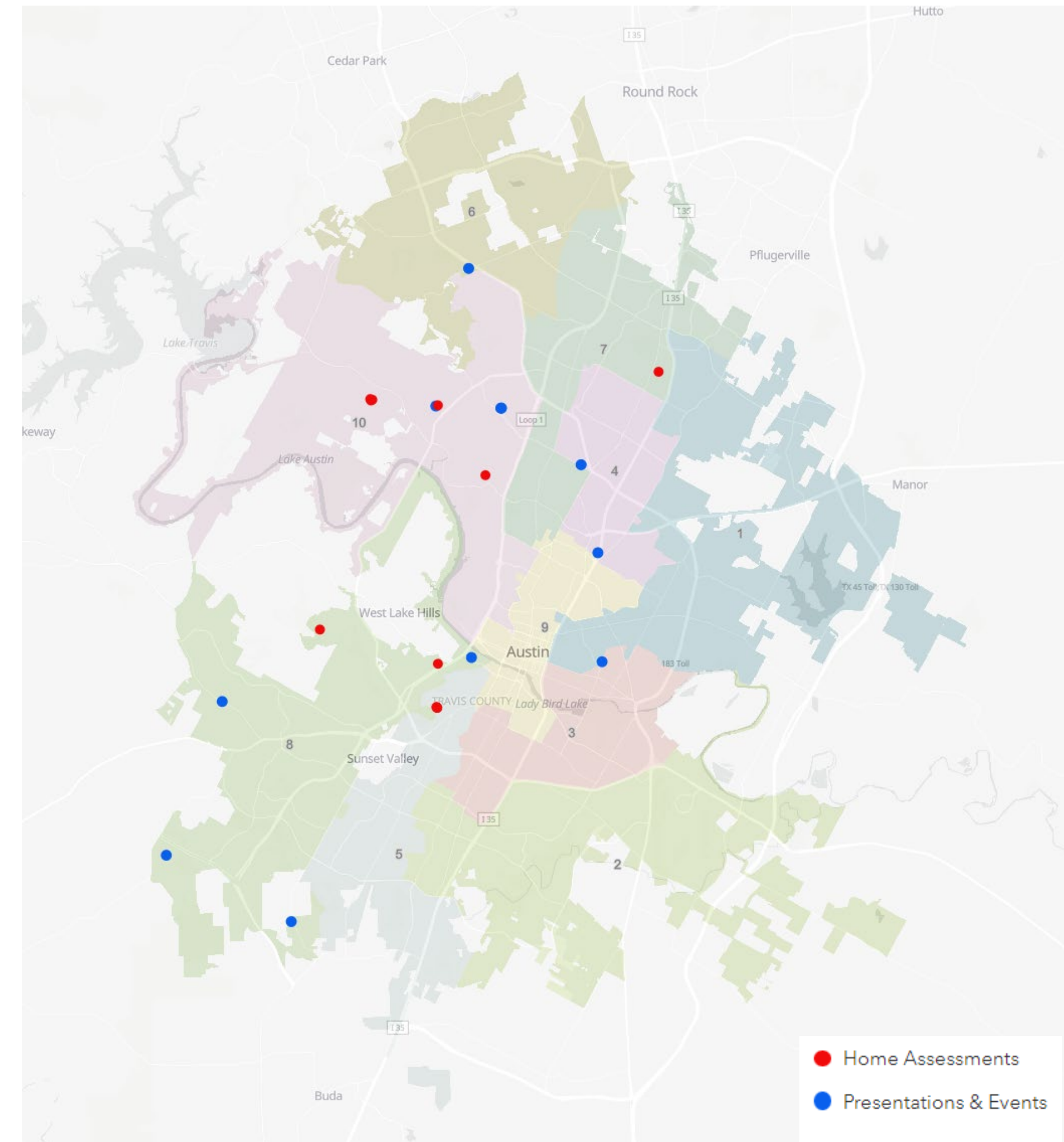
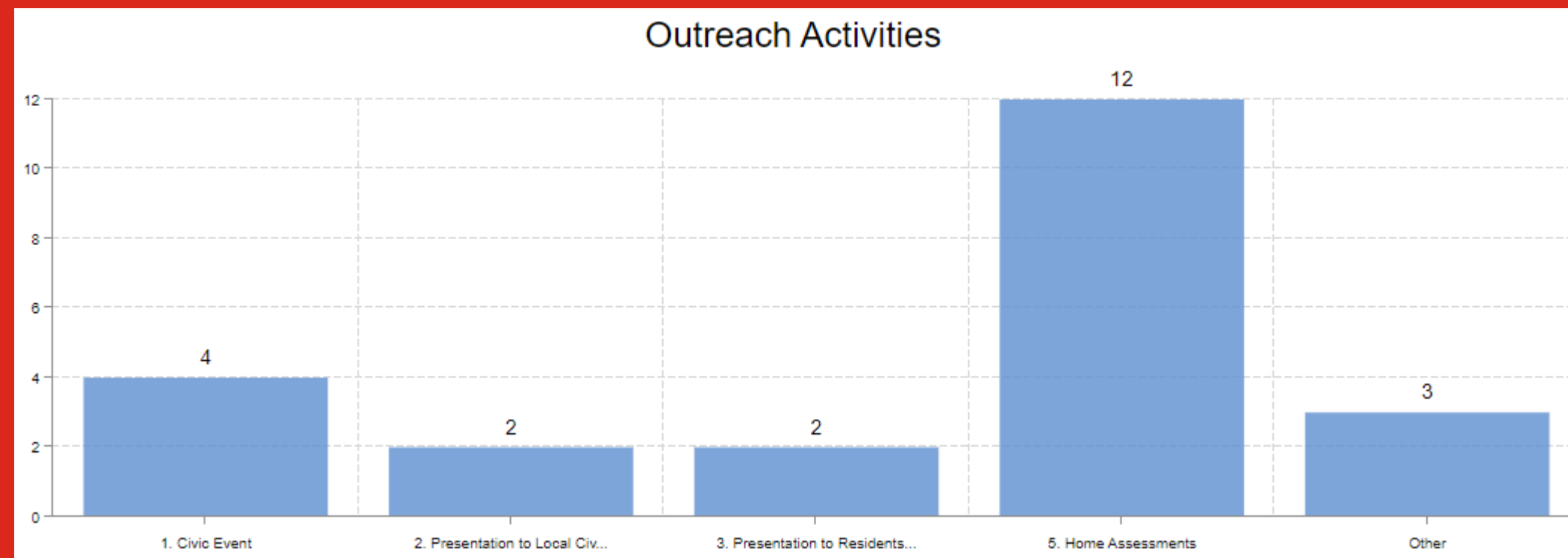




The number of public presentations and home assessments provided in the past 6 months.

11 Presentations and events, including virtual events such as the annual Wildfire Symposium held virtually, and **12** home assessments provided.

Outreach Activities

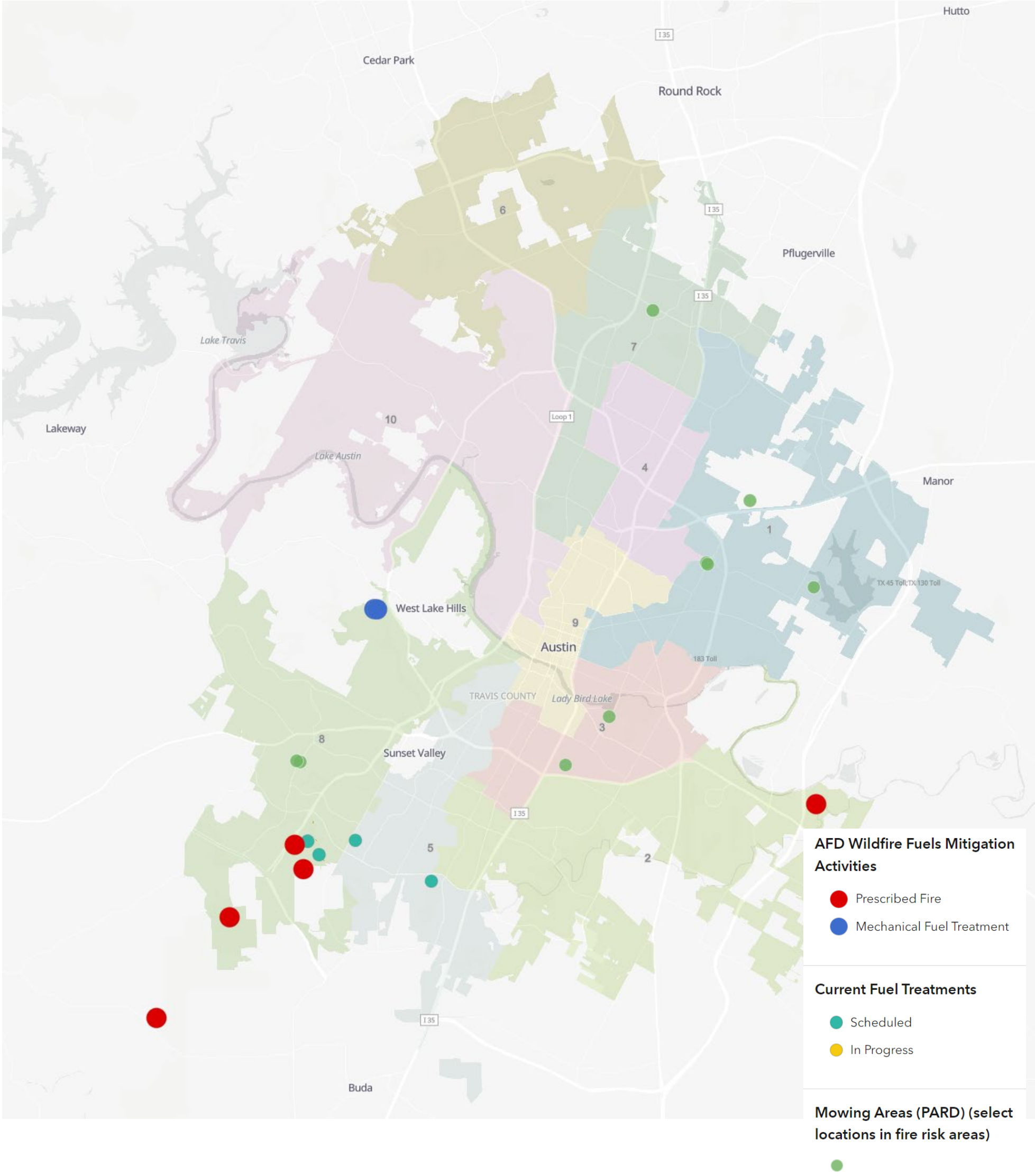
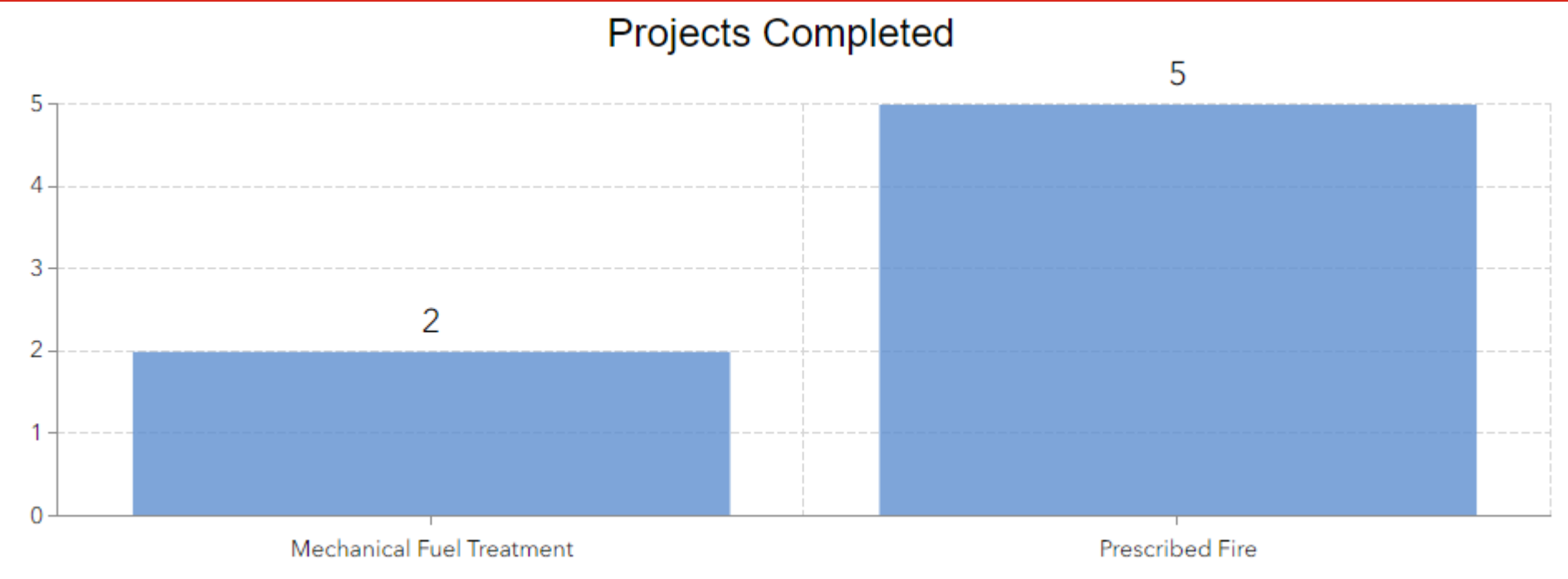




The number, size, type and location of fuel mitigation activities reported by partners in the past 6 months.

5 Prescribed fires (151 ac) and 2 shaded fuel breaks (2 ac) completed.

Fuel Mitigation



Up Next we will hear from Wildfire Mitigation Partners on their Fuels Reduction efforts

More information can be found on these metrics and much more at

ATXWildfire.org

*The information presented in this update are maintained in real-time in our new Austin-Area
Wildfire Hub, accessible through our website*

