

Equitable Transit-Oriented Development

ETOD Policy Plan and *Imagine Austin*

Comprehensive Planning Joint Committee—10/12/2023



Project Connect and ETOD

2020

Voters overwhelmingly approve Project Connect

- Also approved is \$300 million in anti-displacement funding
- Austin Transit Partnership (ATP) created
- Joint Powers Agreement (JPA) between City of Austin, CapMetro, and ATP

2021

CapMetro ETOD study (funded by FTA)

- Analyzed all 98 station areas for: population & demographics, displacement risk, jobs & businesses, urban fabric, real estate market, and mobility
- Collected data through community engagement

2021

City Council Resolution on ETOD

Directed that the ETOD Policy Plan explore tools for: **equitable outcomes**; anti-displacement strategies; preservation + creation of affordable + market-rate housing; compact, connected + transit supportive mix of land uses; codifying community benefits

CapMetro ETOD Study

- **\$3.15 million** in Federal Transit Administration (FTA) TOD planning grants
- **98 stations** across all Project Connect lines
- **Quantitative** analysis of existing conditions within ½ mile of station areas
- **Qualitative** data collection through robust community engagement

Equitable Transit-Oriented Development Study



The ETOD Policy Plan

- Informed by CapMetro's ETOD Study
- **The ETOD Policy Plan** was accepted by Council as a resolution on March 9, 2023
 - Direction to staff to initiate station area planning, *Imagine Austin* amendments, and Land Development Code amendments
 - Direction to create an ETOD Implementation Plan as a short-term work program

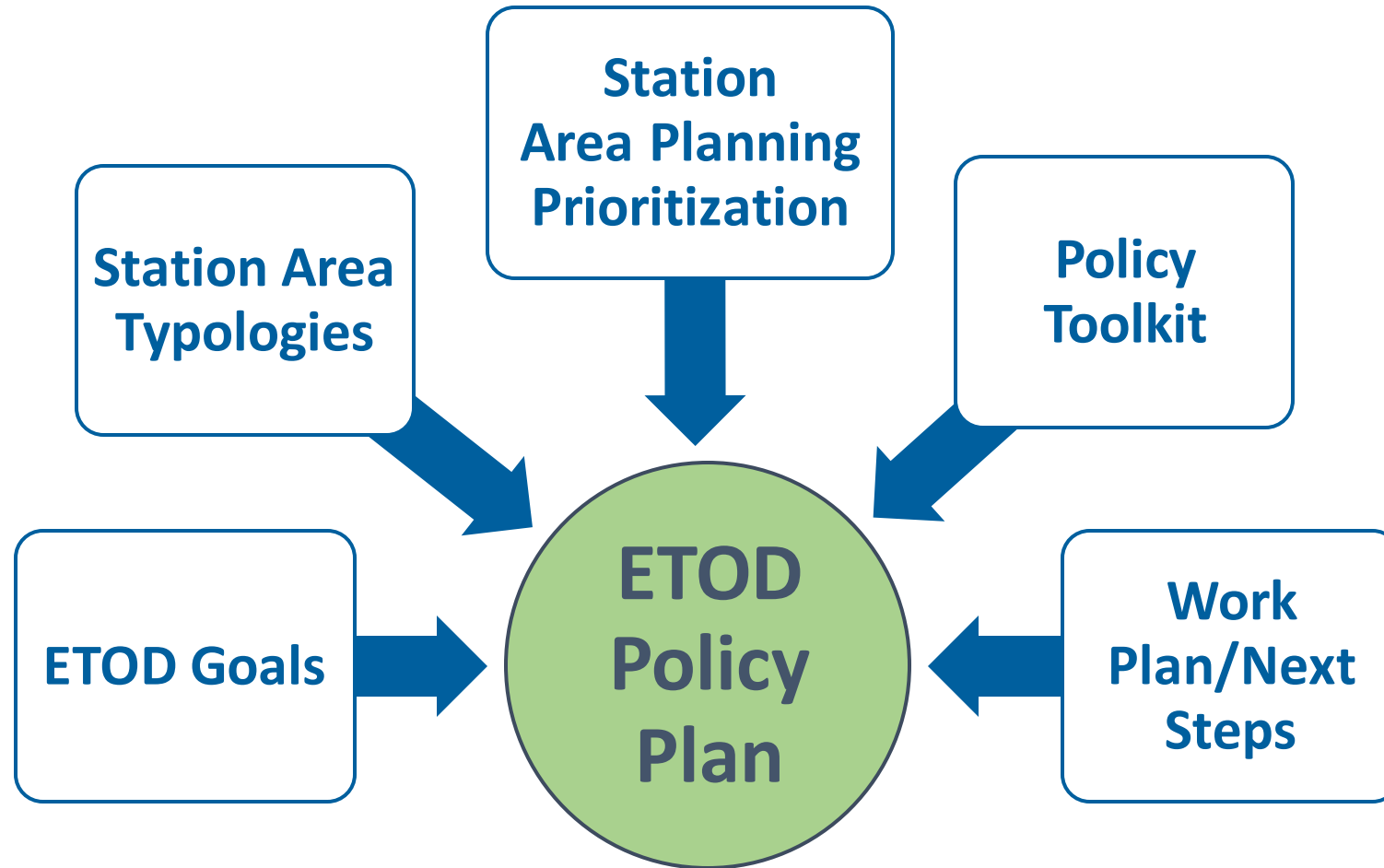
Equitable Transit-Oriented Development Policy Plan



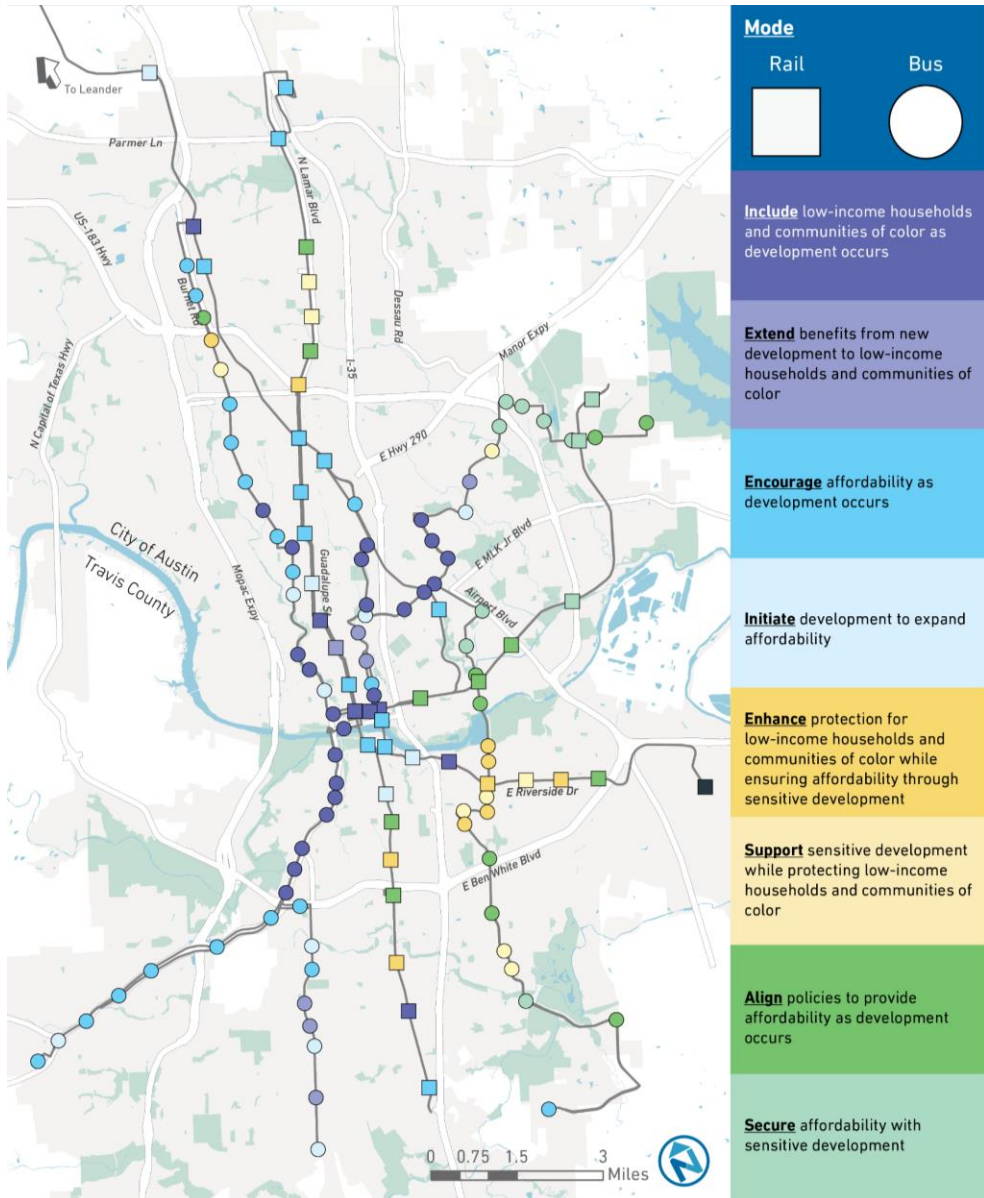
City of Austin



What's in the ETOD Policy Plan?



Imagine Austin- ETOD Station Area Typologies

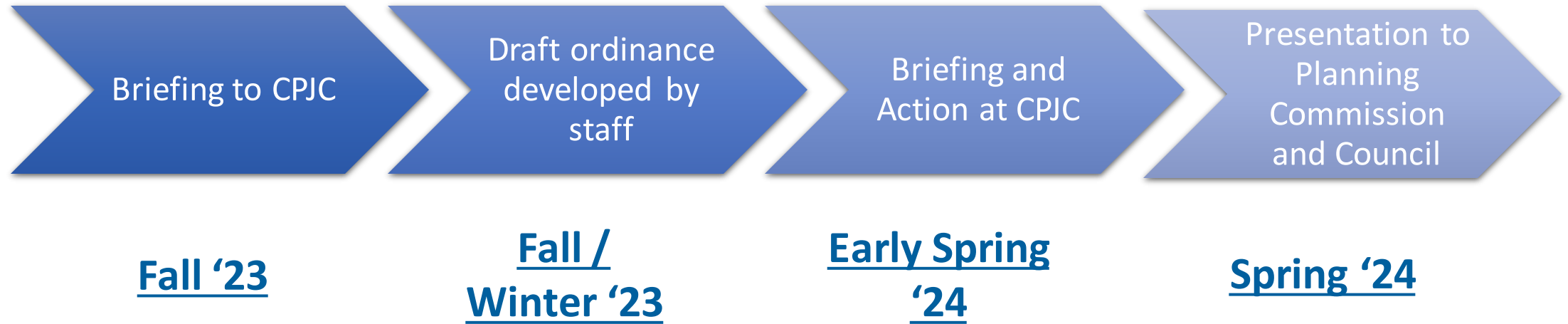


If a station has...	...and is...	...and has experienced...
More Residents Today	Historically Exclusionary or Low Displacement	Rapid Change
More Residents Today	Historically Exclusionary or Low Displacement	Slow Change
Fewer Residents Today	Historically Exclusionary or Low Displacement	Rapid Change
Fewer Residents Today	Historically Exclusionary or Low Displacement	Slow Change
More Residents Today	Vulnerable to or Experiencing Displacement	Rapid Change
More Residents Today	Vulnerable to or Experiencing Displacement	Slow Change
Fewer Residents Today	Vulnerable to or Experiencing Displacement	Rapid Change
Fewer Residents Today	Vulnerable to or Experiencing Displacement	Slow Change

Imagine Austin and ETOD

- Incorporating **ETOD Typologies** into *Imagine Austin* allows for:
 - **Updating IA Compliance Checklist**
 - **Formal consideration in zoning** and neighborhood plan amendment case review;
- **ETOD typologies** consider existing population, recent growth and economic development, and **displacement risk** of households. **ETOD typologies** also speak to types of **growth** most needed for equitable outcomes in a station area

Imagine Austin- ETOD Amendment Timeline



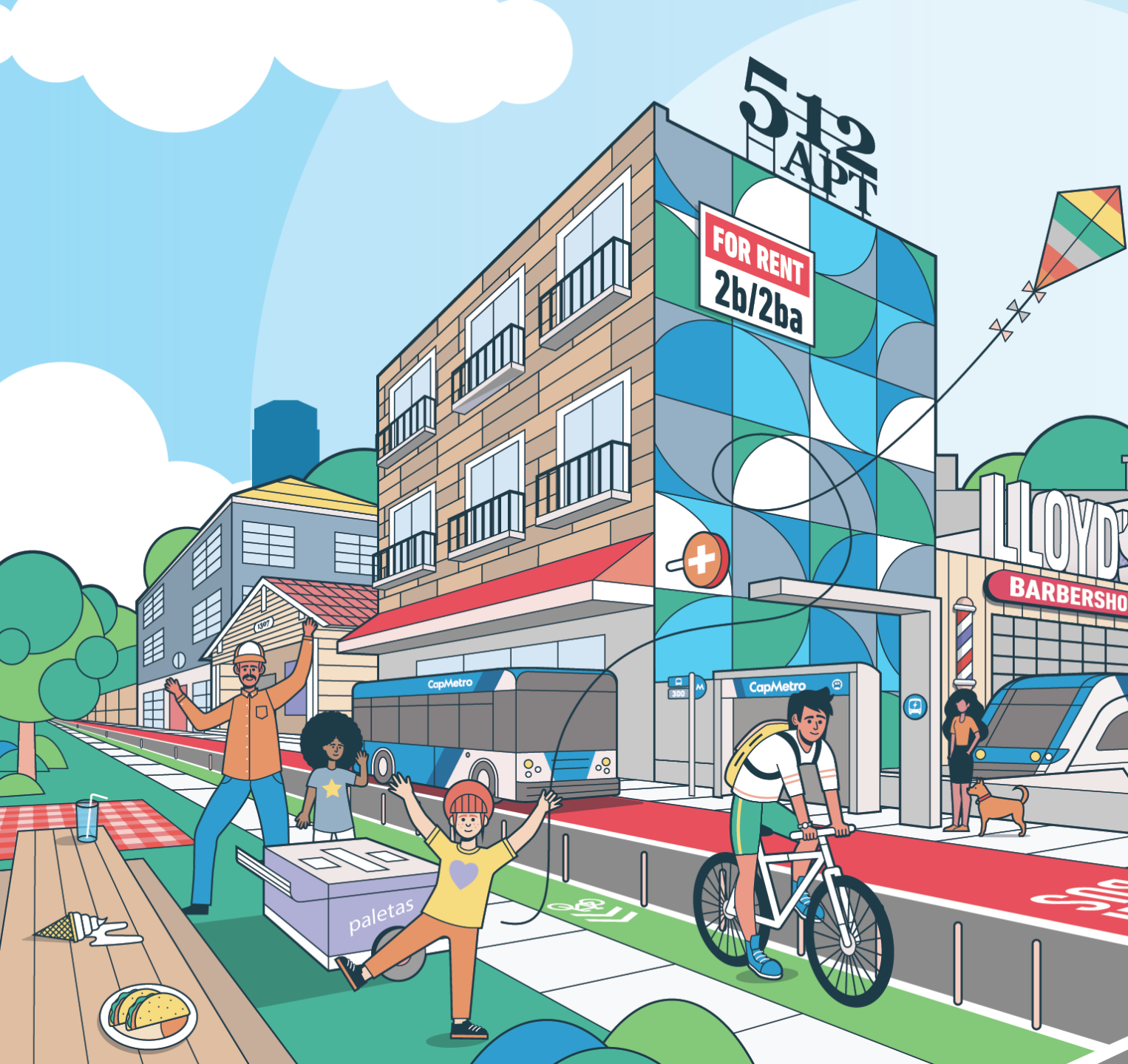
For More Information:

Project Connect Website: <https://projectconnect.com/projects/etod>

- Sign up for upcoming engagement events
- Explore past engagement events and community feedback reports
- Sign up for Project Connect/ETOD Newsletter updates

City ETOD Project Website: <https://publicinput.com/etod>

- ETOD Policy Plan
- ETOD Frequently Asked Questions (FAQ)
- Station Area Vision Planning Updates



Questions?

Lucy.Hall@austintexas.gov

Warner.Cook@austintexas.gov