



RMC Monthly Report

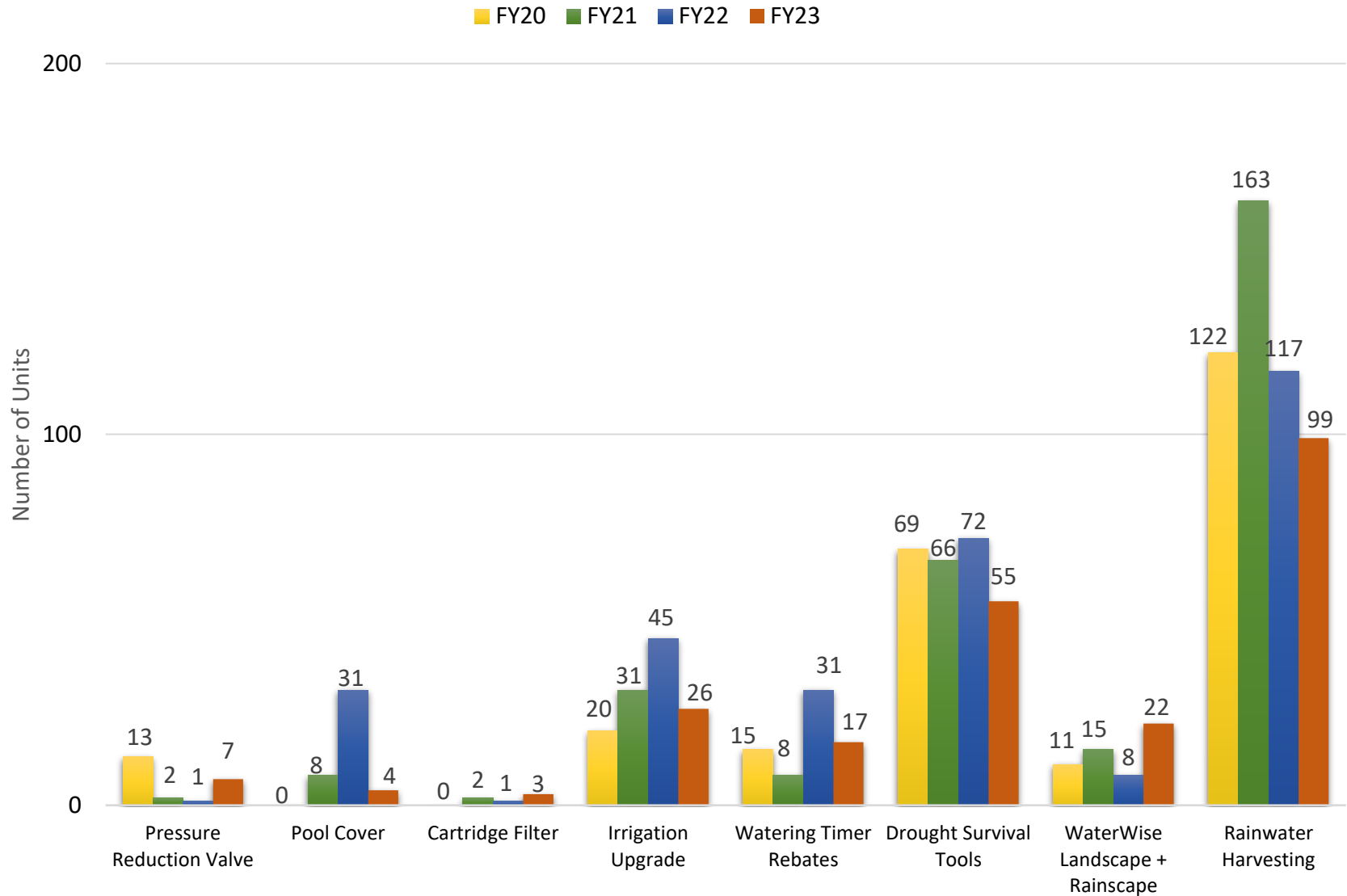
September 2023

FY23

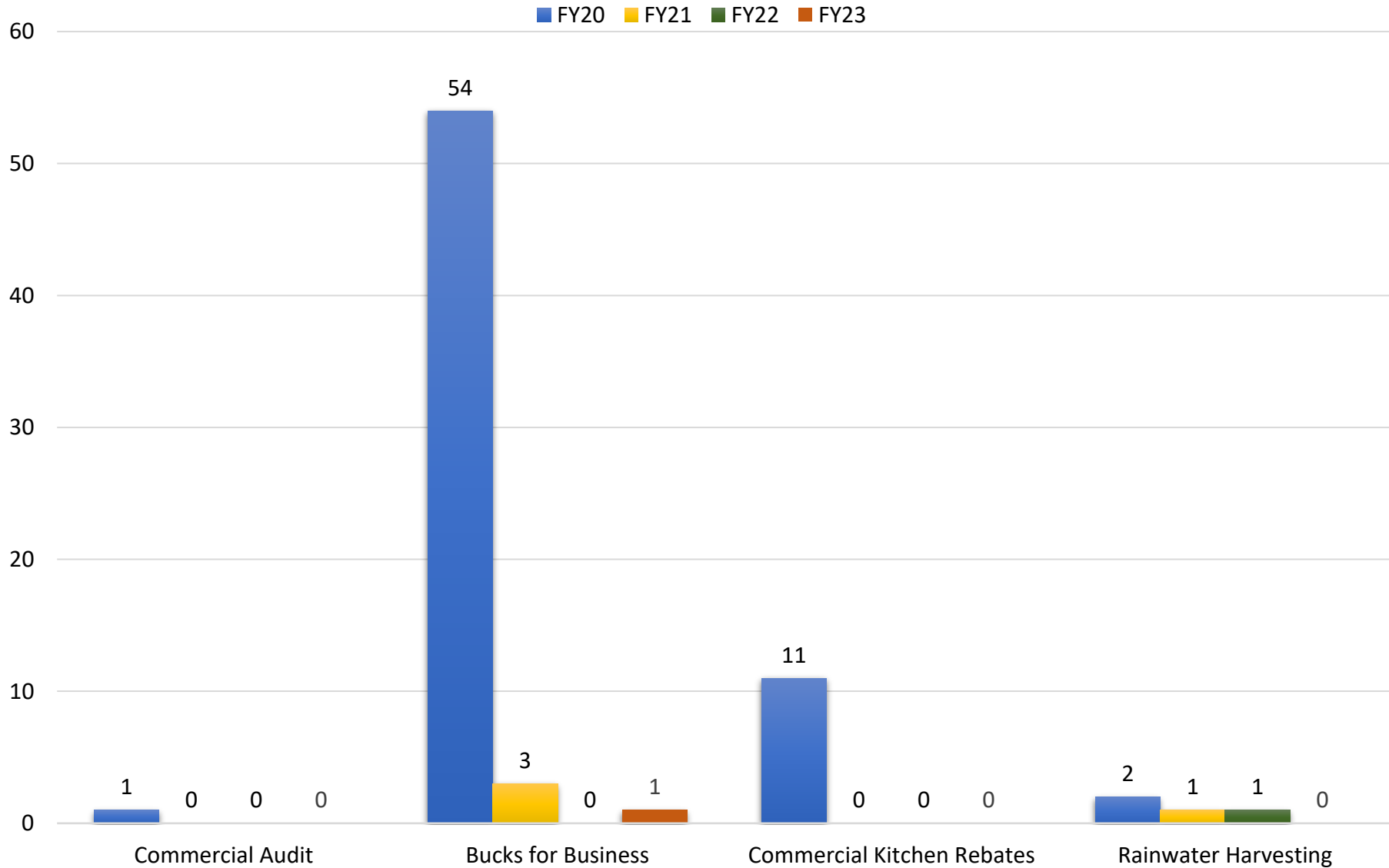
Water Conservation Division
City of Austin | Austin Water



Residential Program Participation, FY23 YTD

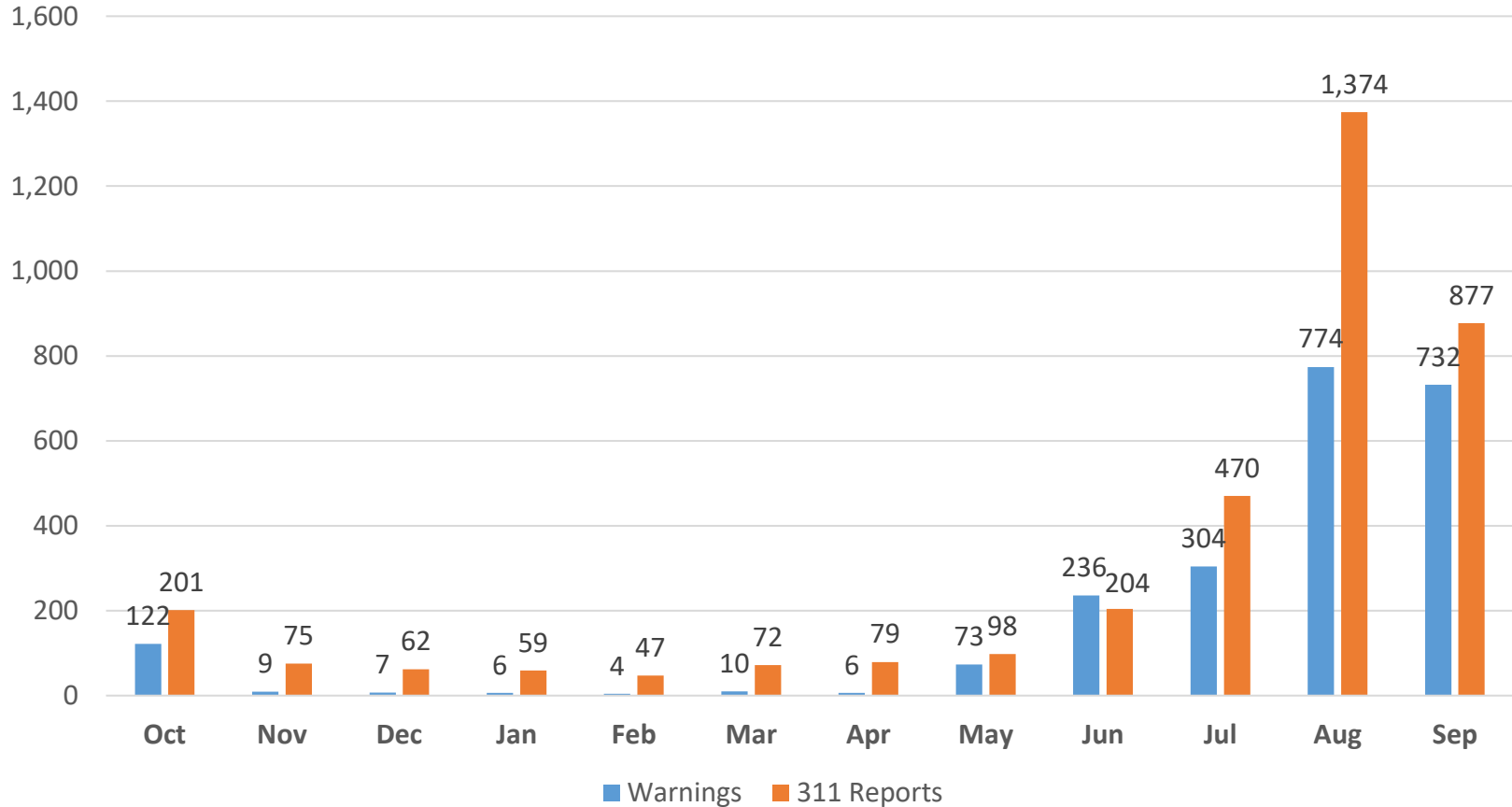


Commercial and Multifamily Program Participation, FY23 YTD



Water Waste/Watering Restrictions Enforcement Activity, FY23 YTD

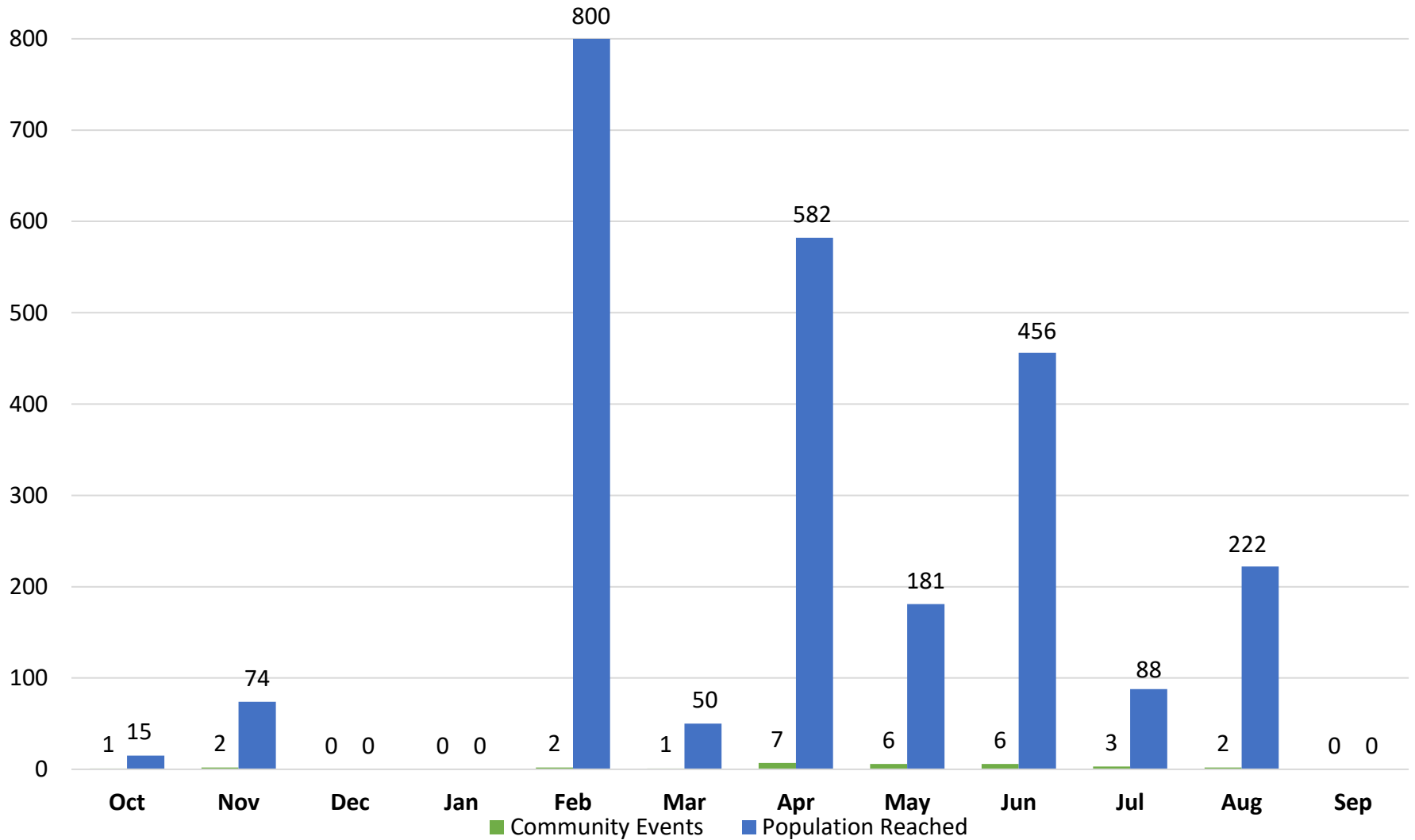
Warnings Issued and 311 Reports



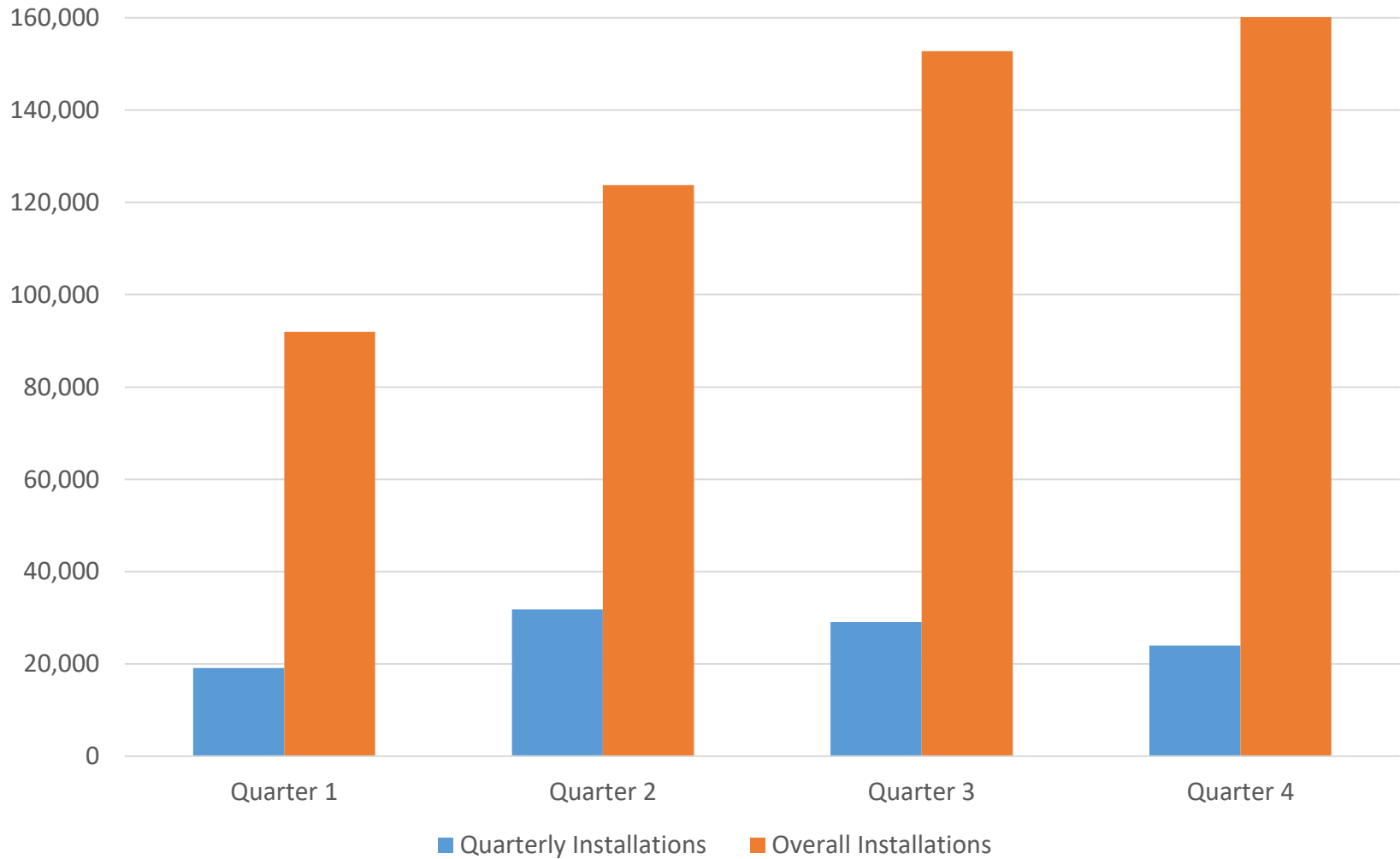
August Drought Response Stage: Stage 2



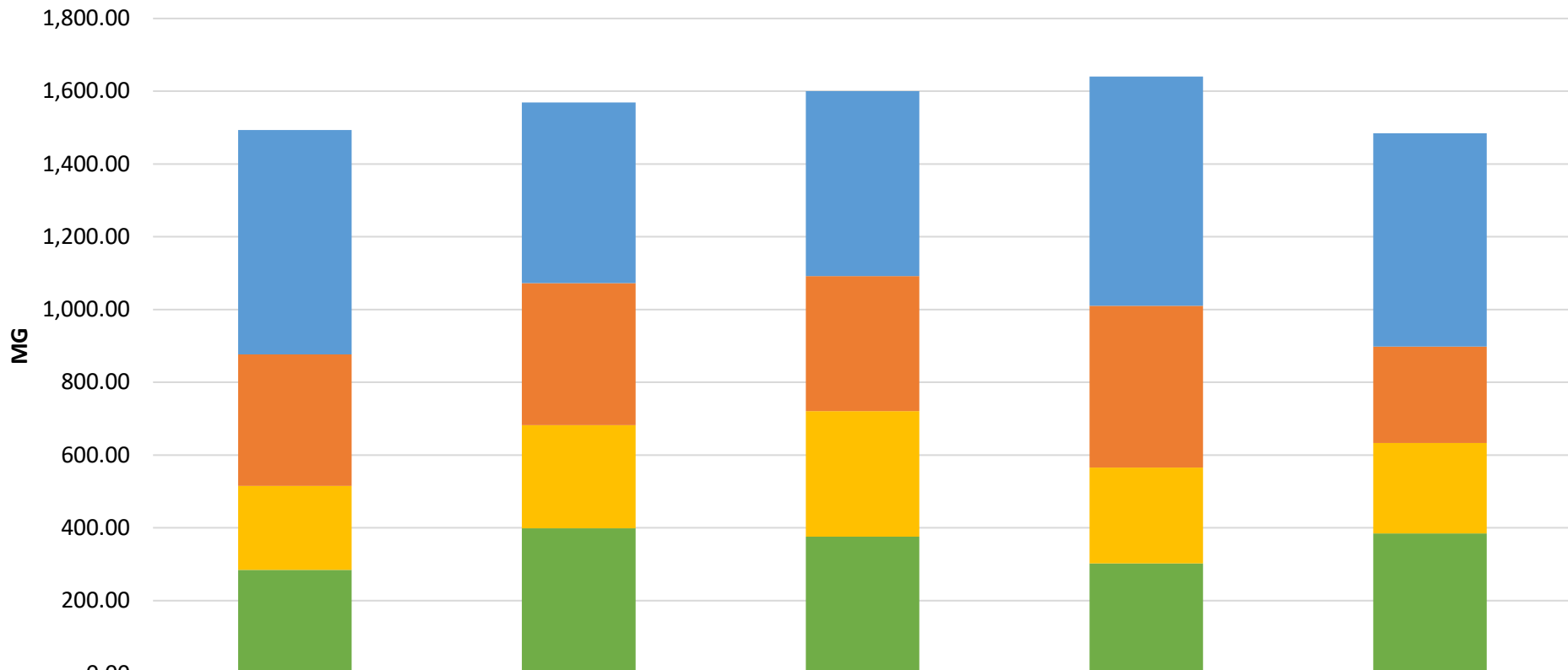
Public Outreach Events, FY23 YTD



My ATX Water Meter (AMI) Installations, FY23 YTD



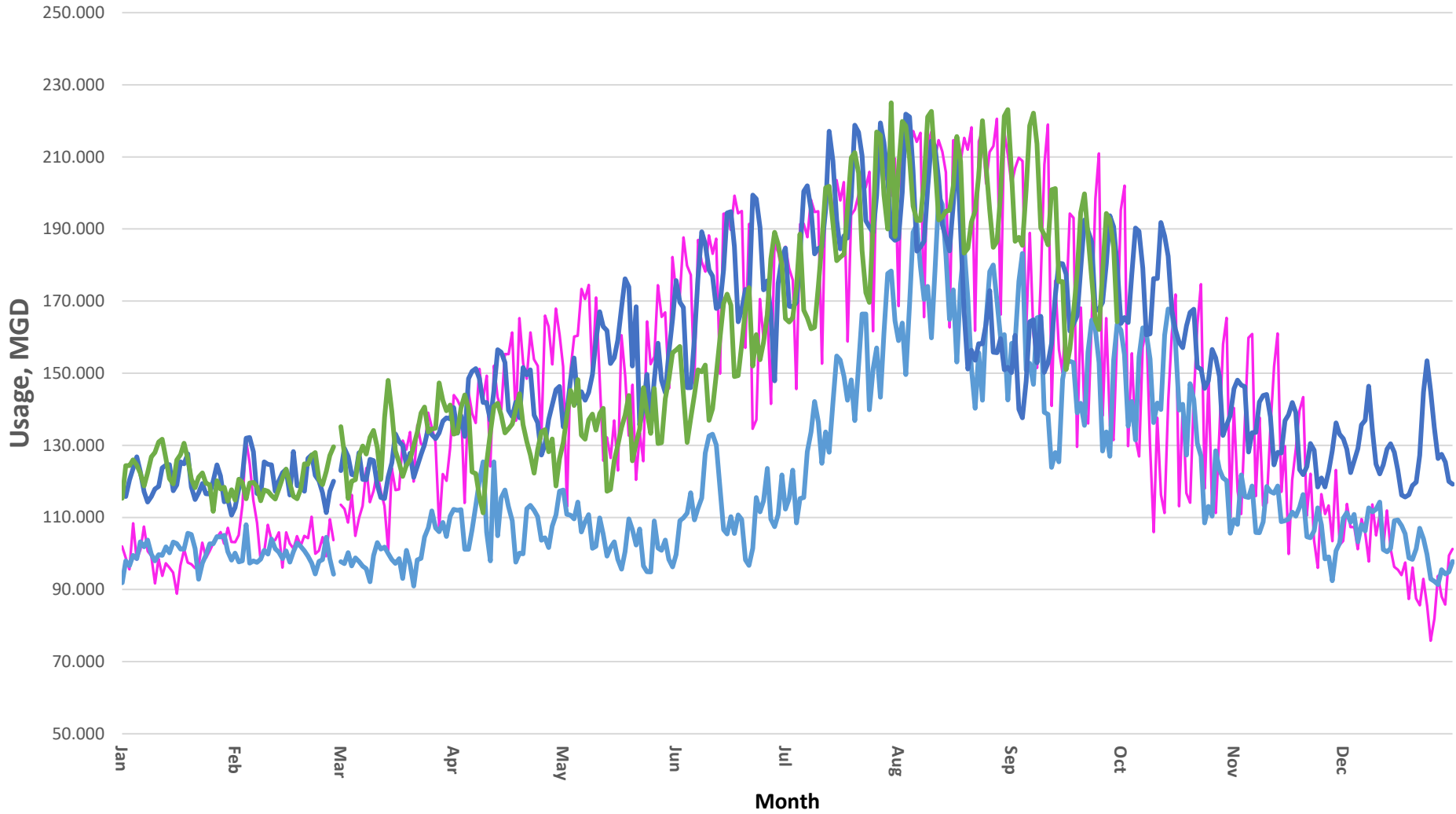
Reclaimed Water Use



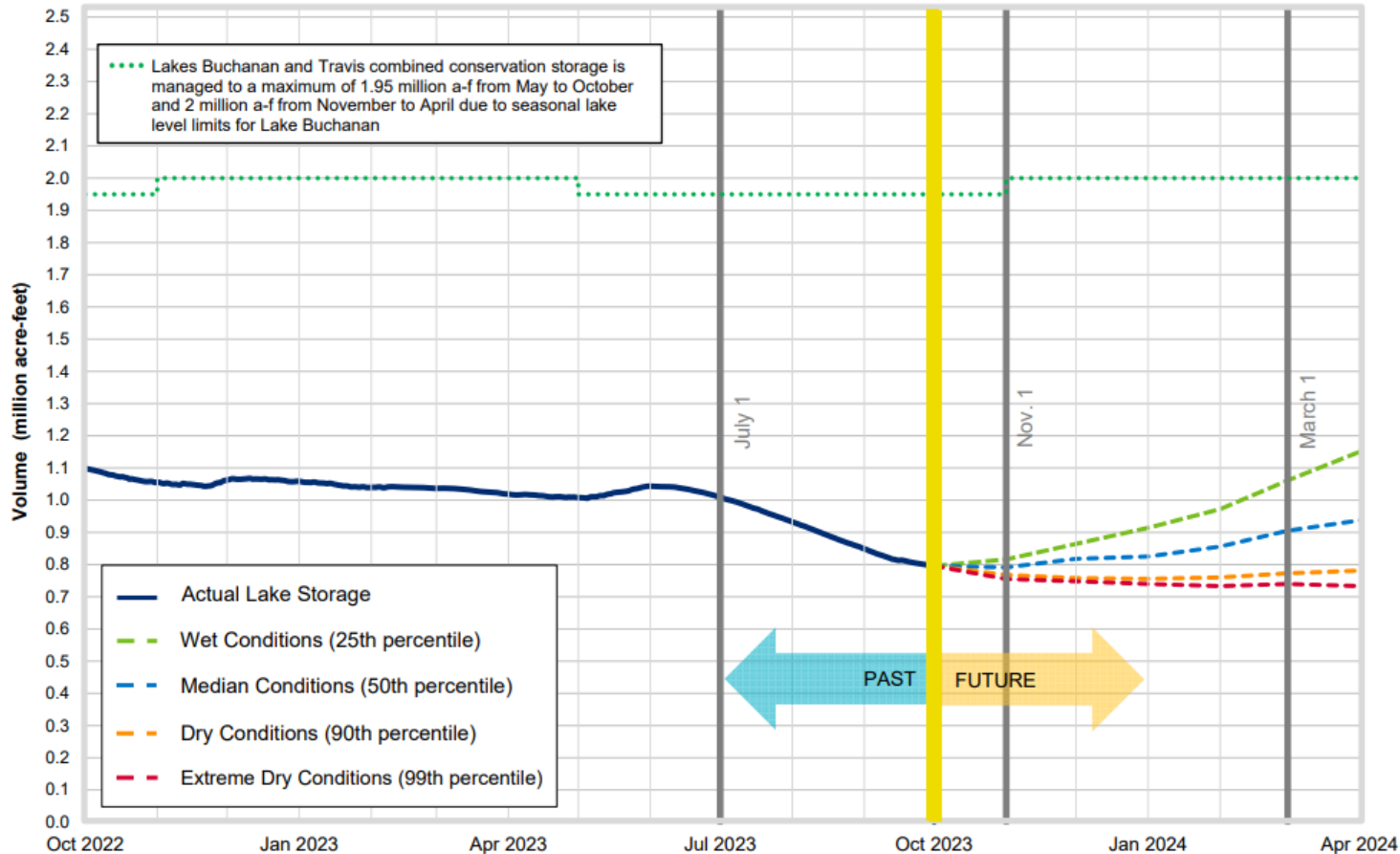
	FY19	FY20	FY21	FY22	FY23
■ Quarter IV	616.60	496.91	507.97	630.48	586.12
■ Quarter III	361.47	389.94	370.96	444.20	264.64
■ Quarter II	230.84	284.04	345.25	263.44	248.48
■ Quarter I	284.14	398.30	375.67	302.27	384.91

Multi-Year Daily Water Usage

— 2011 "Dry Year" — 2015 "Wet Year" — 2022 — 2023



Lakes Buchanan and Travis Total Combined Storage Projections



Date: Oct. 1, 2023

Note: One acre-foot equals 325,851 gallons

[City of Austin Drought Contingency Plan Drought Response Stage Triggers:](#)

Conservation Stage:
Above 1.4 MAF

Stage I:
1.4 MAF

Stage II:
900,000 AF

Stage III:
600,000 AF

Emergency Response Stage IV:
Catastrophic event including prolonged drought

Highland Lakes Storage summary as of October 10, 2023

Combined lake storage: 785,836 acre feet

Combined reservoir total: 40%



Water Conservation Division
City of Austin | Austin Water

