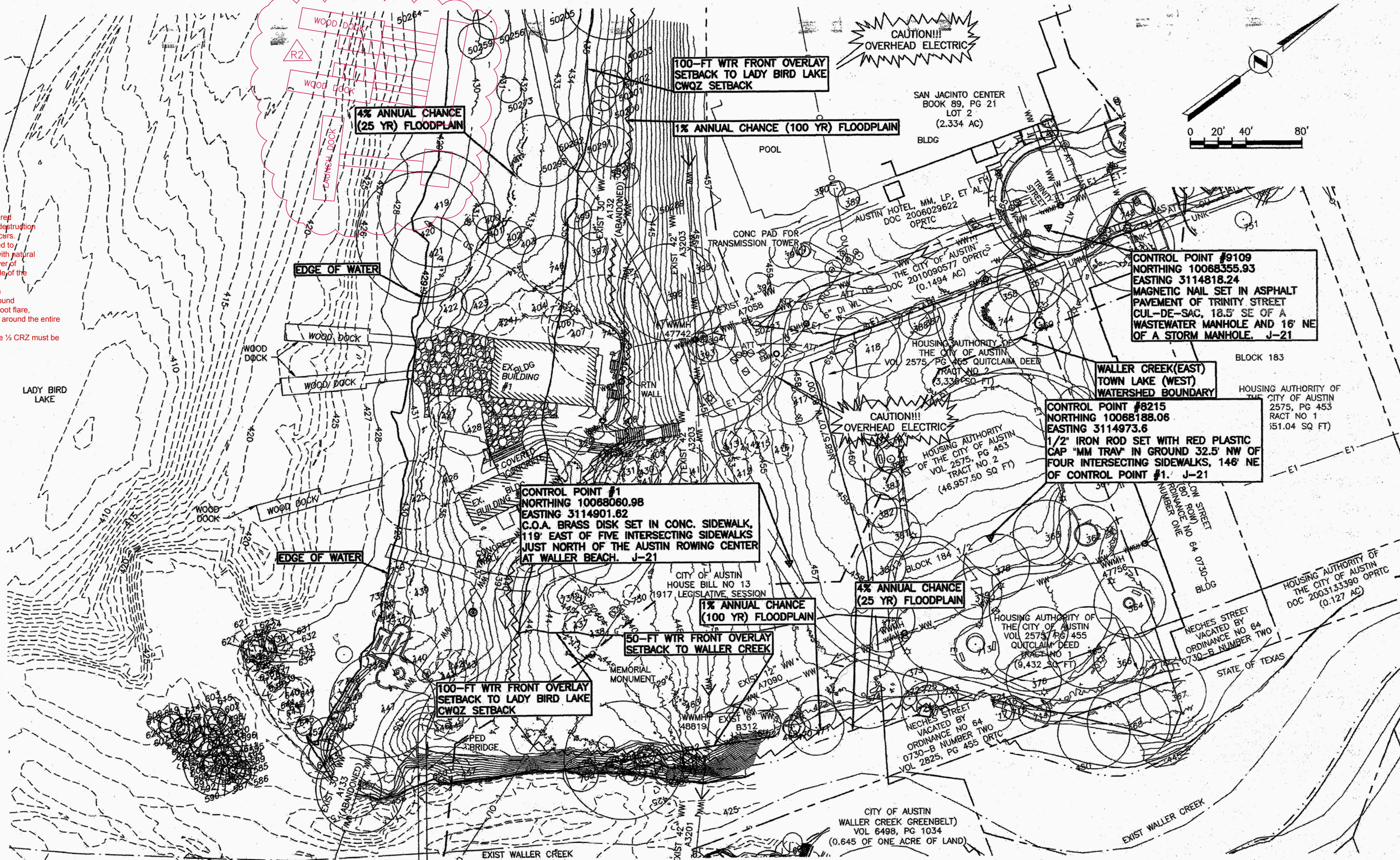


P:\Active\6030_WCT_Design_B2\000_CAD\13_00 DWG\13_00 P&T\13_06_01 Sheet\WC06-Civil\Permit Set\WC06-008-EXIST-COND.dwg Plotted: 4/7/2011 10:43:27 AM Layout: Sheet

CURVE DATA		
NUMBER	RADIUS (FT)	
C1	50.00	

LINE DATA		
NUMBER	BEARING	
L1	N73°28'02"W	
L5	N53°06'39"E	

Tree protection fencing is required for all trees within the limits of destruction on site BEFORE demolition occurs. Where fencing cannot be placed to protect the extent of the CRZ with natural ground cover, provide an 8" layer of organic hardwood mulch outside of the fencing. 2x4 or thicker lumber (to match height of building) securely around tree trunk, buttress roots, and root flare, is required if fencing cannot go around the entire 1/2 CRZ. Any demo/excavation within the 1/2 CRZ must be done by hand.



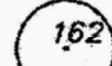
BENCHMARKS:

THE COORDINATES AND BEARINGS SHOWN HEREON ARE BASED ON THE TEXAS STATE PLANE COORDINATE SYSTEM, CENTRAL ZONE-4203, NAD83(CORS).

CONTROL POINT	GRID NORTHING	GRID EASTING	ELEVATION	DESCRIPTION
1	10068060.98	3114901.62	455.56	COA BRASS DISK SET IN CONC. SIDEWALK, 119' EAST OF FIVE INTERSECTING SIDEWALKS JUST NORTH OF THE AUSTIN ROWING CENTER AT WALLER BEACH. J-21
8215	10068188.06	3114973.6	457.14	1/2" IRON ROD SET WITH RED PLASTIC CAP "MM TRAY" IN GROUND 32.5' NW OF FOUR INTERSECTING SIDEWALKS, 146' NE OF CONTROL POINT #1. J-21
9109	10068355.93	3114818.24	464.41	MAGNETIC NAIL SET IN ASPHALT PAVEMENT OF TRINITY STREET CUL-DE-SAC, 18.5' SE OF A WASTEWATER MANHOLE AND 16' NE OF A STORM MANHOLE. J-21



SURVEY BENCHMARK



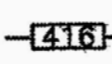
EXIST TREE



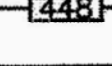
WASTEWATER MANHOLE



STORM DRAIN MANHOLE



UTILITY FLOW ARROW



EXIST CONTOURS (WATER)



EXIST CONTOURS (LAND)



WATERS EDGE (ELEV 429.0)

WALLER CREEK WATERSHED BOUNDARY

CWQZ/WO/NORTHSHORE CENTRAL SUBSTATION DISTRICT

100 YR LBL FLOODPLAIN

25 YR LBL FLOODPLAIN

PROPERTY LINE

AUSTIN ENERGY O/H POWER LINE

LEGEND

SITE PLAN APPROVAL SHEET **B of 86**
 FILE NUMBER: SPC-2009-0362C APPLICATION DATE: 12-14-2008
 APPROVED BY COMMISSION ON 4-12-11 UNDER SECTION _____ OF
 CHAPTER 165.001 OF THE CITY OF AUSTIN CODE
 EXPIRATION DATE: 5-5-11, LDC 6-1-13 CASE MANAGER: LYNDY COURTNEY
 PROJECT EXPIRATION DATE (ORD. #070045-A) 12-14-2014 DWG# DOZ X
 Director, Watershed Protection and Development Review
 RELEASED FOR GENERAL COMPLIANCE: _____ ZONING: P
 Rev. 1: 5-10-12 Correction 1: _____
 Rev. 2: _____ Correction 2: _____
 Rev. 3: _____ Correction 3: _____
 Final Plot must be recorded by the Project Expiration Date, if applicable. Subsequent Site Plans which do not comply with the Code current at the time of filing, and all required Building Permits and/or a notice of construction (if a building permit is not required), must also be approved prior to the Project Expiration Date.

Espey Consultants, Inc.
 4801 SOUTHWEST PARKWAY
 PARKWAY 2, SUITE 150
 AUSTIN, TEXAS 78735
 (512) 326-5659
 TBPE #F-293



Rev.	Description	Date	Appr.
1	REVISE BOAT DOCK AREA	4/7/2011	AS NOTED

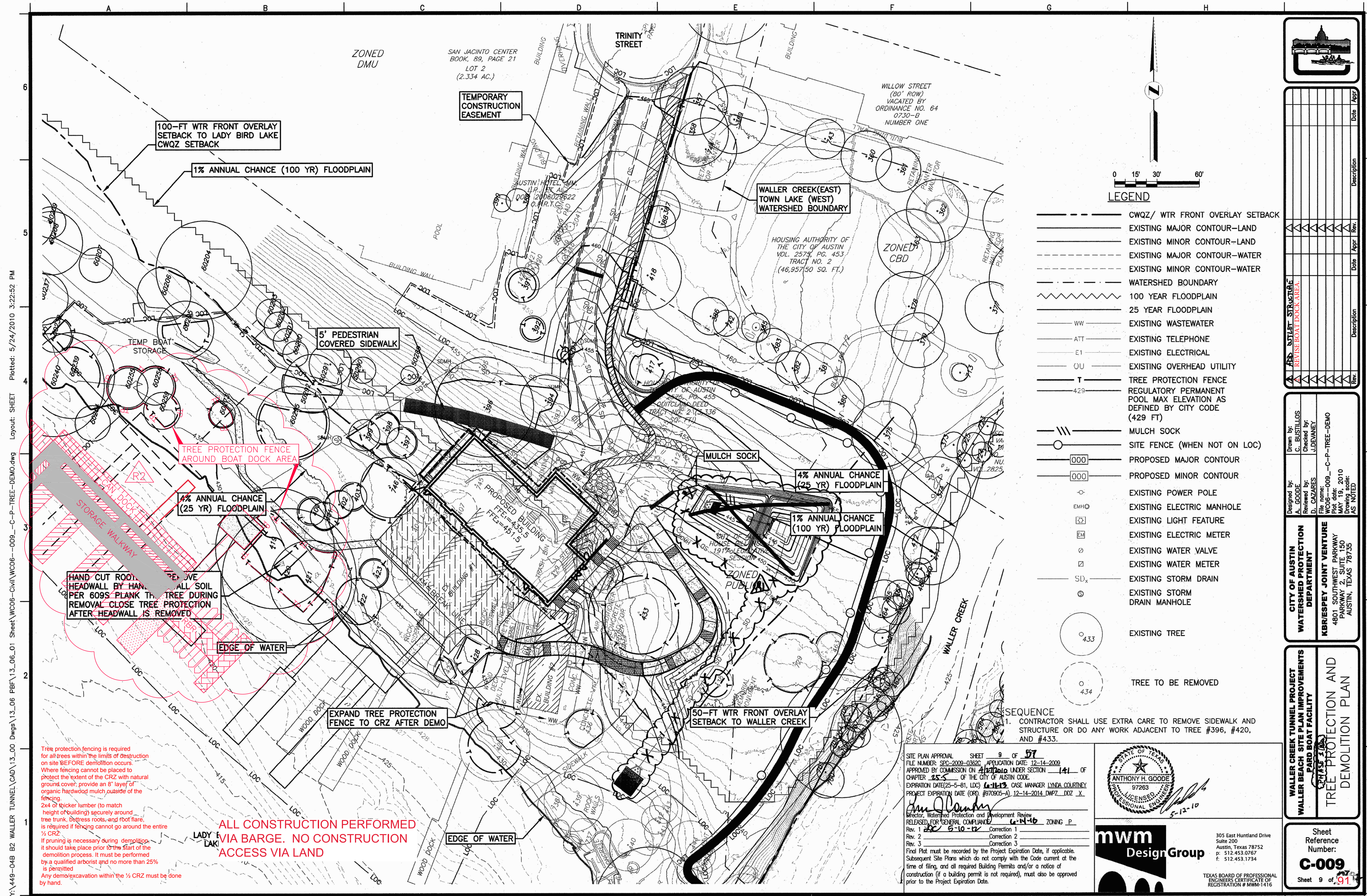
DESIGNED BY: G. SANCHEZ
 CHECKED BY: A. PERERA
 CITY OF AUSTIN WATERSHED PROTECTION DEPARTMENT
 KERESPEY JOINT VENTURE
 4801 SOUTHWEST PARKWAY
 PARKWAY 2, SUITE 150
 AUSTIN, TEXAS 78735

WALLER BEACH EXISTING
 WALLER BEACH TUNNEL PROJECT
 WALLER BEACH SITE PLAN IMPROVEMENTS
 PAID BOAT FACILITY

Sheet Reference Number: **C-008**
 Sheet 008 of 91

REPLACEMENT SHEET

SPC-2009-0362C R2

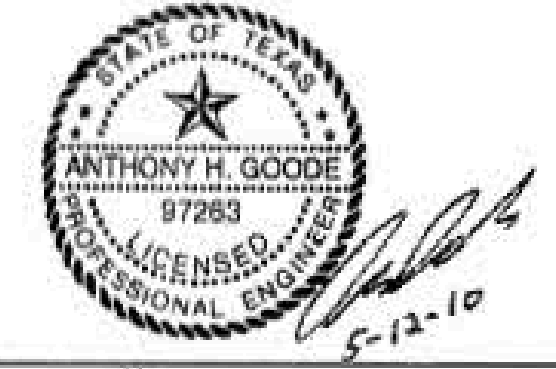


TREE SURVEY UPDATED FOR AREAS WITHIN AND ADJACENT TO LOC ON 11/29/2022

CLASS OF TREE	TAG - ALL TREES LOCATED WITHIN AND IMMEDIATELY ADJACENT TO LIMITS OF CONSTRUCTION	TYPE	SIZE (INCHES)	DIAPYCNAMETER (FEET PER PROVIDED SURVEY)	TOTAL CALIPER INCHES TO BE REMOVED	REPLACEMENT FACTOR	REPLACEMENT INCHES REQUIRED	REASON FOR REMOVAL/MITIGATION
1	357	Live Oak	24		24.0			
1	391	Cedar Elm	12		12.0			
1	392	Cedar Elm	9		9.0			
2	393	Madrore	8	8	20.5	20.5	0%	Remove
2	394	Crape Myrtle	8	8	18.0			
2	395	Cedar Elm	13		13.0			Remove
H 4	496 4965	Live Oak	35		35.0 40			**
2	397	Crape Myrtle	10		10.0			
2	398	Crape Myrtle	10		10.0			
2	399	Crape Myrtle	10		10.0			
2	400	Crape Myrtle	10		10.0			
2	401	Crape Myrtle	10		10.0			
2	402	Crape Myrtle	10		10.0			
2	403	Crape Myrtle	10		10.0			
2	404	Crape Myrtle	10		10.0	10.0	0%	Remove
2	405	Crape Myrtle	10		10.0	10.0	0%	Remove
2	406	Crape Myrtle	10		10.0	10.0	0%	Remove
2	407	Crape Myrtle	10		10.0	10.0	0%	Remove
1	408	Cedar Elm	15		15.0	15.0	0%	Remove
2	409	Mulberry	11		11.0	11.0	0%	Remove
2	410	Crape Myrtle	6	6	9.0	9.0	0%	Remove
2	411	Crape Myrtle	6	5	11.0	11.0	0%	Remove
2	412	Crape Myrtle	5	5	9.5	9.5	0%	Remove
2	413	Crape Myrtle	5	5	9.5	9.5	0%	Remove
2	414	Crape Myrtle	5	5	11.5	11.5	0%	Remove
2	415	Crape Myrtle	6	5	8.5	8.5	0%	Remove
2	416	Crape Myrtle	5	5	12.5	12.5	0%	Remove
1	417	Live Oak	20		20.0			
2	418	Pine	24		24.0			
H 1	419	Bald Cypress	42		42.0 47.5			**
4	420	Black Willow	26	18	29.5 21	20		1/4 TRUNKS NO LONGER PRESENT
1	421	Bald Cypress	29		29.0 34			
1	422	Bald Cypress	16		16.0 20			
2	423	Crape Myrtle	7	5	9.5			
2	424	Crape Myrtle	10		10.0	10.0	0%	Remove
1	425	Bald Cypress	25		25.0			
1	426	Live Oak	21		21.0			**
2	427	Crape Myrtle	4	4	8.0			
H 1	428	Live Oak	22		22.0 34			
1	429	Cedar Elm	10		10.0	10.0	0%	Remove
2	430	Vitex	10		10.0	10.0	0%	Remove
2	431	Vitex	9	5	13.5	13.5	0%	Remove
2	432	Crape Myrtle	10		10.0	10.0	0%	Remove
1	433	Live Oak	37		37.0			**
1	434	Elm	8		8.0	8.0	0%	Remove
2	435	Crape Myrtle	10		10.0	10.0	0%	Remove
2	436	Crape Myrtle	10		10.0			
4	437	Vitex	5	5	7.5	7.5	0%	Remove
4	438	Vitex	7	7	12.0			
4	729	Hackberry	20		20.0			
4	730	Mulberry	6		6.0	6.0	0%	Remove
4	731	Mulberry	10		10.0	10.0	0%	Remove
4	739	Mulberry	8		8.0	8.0	0%	Remove
4	740	Mulberry	6		6.0	6.0	0%	Remove
2	741	Crape Myrtle	15		15.0	15.0	0%	Remove
4	745	Willow	25	19	39.5	39.5	0%	Remove
48 1	746	Live Oak	21		21.0 29.5			

4	50200	Crape Myrtle	9					9.0					
4	50201	Crape Myrtle	9					9.0					
4	50202	Crape Myrtle	10					10.0					
4	50203	Crape Myrtle	10					10.0					
1	50204	American Elm	24	20				34.0					
1	50205	Live Oak	20					20.0					
1	50206	Live Oak	19					19.0					
	50238	Unknown	9	6				12.0					
4	50239	Willow	30	33.5	9.5			30.0 43					
4	50240	Willow	30	12				36.0					TREE NO LONGER PRESENT
1	50255	Bald Cypress	14					14.0 20					
1	50256	Bald Cypress	13					13.0 19.5					
1	50259	Bald Cypress	13					13.0 17.5					
4	50264	Willow	9	16	16			17.5 32					
1	50273	Cedar Elm	9					9.0 15					
1	50289	Post Oak	6					6.0					
2	50290	Crape Myrtle	4	4	5	5		9.0					
2	50291	Crape Myrtle	8	6	5	3		15.0					
2	50292	Crape Myrtle	8	7	6	6	6	20.5					
1	50293	Live Oak	3					3.0					
H 1	50295	Live Oak	26					26.0 38.5					
3	50403	Vitex	5					5.0	5.0	0%	0.0	Remove	
3	50404	Vitex	2					2.0	2.0	0%	0.0	Remove	
3	50405	Vitex	2	2	2			4.0	4.0	0%	0.0	Remove	
	59	COTTONWOOD	10.5					10.5					
NO F: ** Tree to Remain, Work within the Critical Root Zone													
	60	COTTONWOOD	11					11					
	61	BOX ELDER	10					11					
CALIPER INCHES TO BE REMOVED 332.5 MITIGATION INCHES													

SITE PLAN APPROVAL SHEET 10 OF 57
FILE NUMBER: SPC-2009-0362C APPLICATION DATE: 12-14-2008
APPROVED BY COMMISSION ON 4/12/2010 UNDER SECTION 141 OF
CHAPTER 265 OF THE CITY OF AUSTIN CODE
EXPIRATION DATE: 25-5-81, LDC 6-14-13 CASE MANAGER: LYNDA COURTNEY
PROJECT EXPIRATION DATE (ORD. #070905-A) 12-14-2014 DWPZ DOZ X
Anthony H. Goode
Director, Watershed Protection and Development Review
RELEASED FOR GENERAL COMPLIANCE: 6-14-10 ZONING P.
Rev. 1 Correction 1
Rev. 2 Correction 2
Rev. 3 Correction 3
Final Plot must be recorded by the Project Expiration Date, if applicable.
Subsequent Site Plans which do not comply with the Code current at the
time of filing, and all required Building Permits and/or a notice of
construction (if a building permit is not required), must also be approved
prior to the Project Expiration Date.



mwm
Design Group
305 East Huntland Drive
Suite 200
Austin, Texas 78752
p: 512.453.0767
f: 512.453.1734

TEXAS BOARD OF PROFESSIONAL
ENGINEERS CERTIFICATE OF
REGISTRATION # MWM-1416

Drawn by:
C. BUSTILLOS
Checked by:
J. DEANNEY
Designed by:
A. GOODE
Reviewed by:
D. CAZARES
WCA 010 - C-P-TREE-LIST
Plot date: MAY 19, 2010
Drawing scale:
AS NOTED

CITY OF AUSTIN
WATERSHED PROTECTION
DEPARTMENT
KBR/ESPEY JOINT VENTURE
4801 SOUTHWEST PARKWAY
PARKWAY 2, SUITE 150
AUSTIN, TEXAS 78735

WALLER CREEK TUNNEL PROJECT
WALLER BEACH SITE PLAN IMPROVEMENTS
PARD BOAT FACILITY
TREE LIST

Sheet
Reference
Number:
C-010
Sheet 10 of 191