



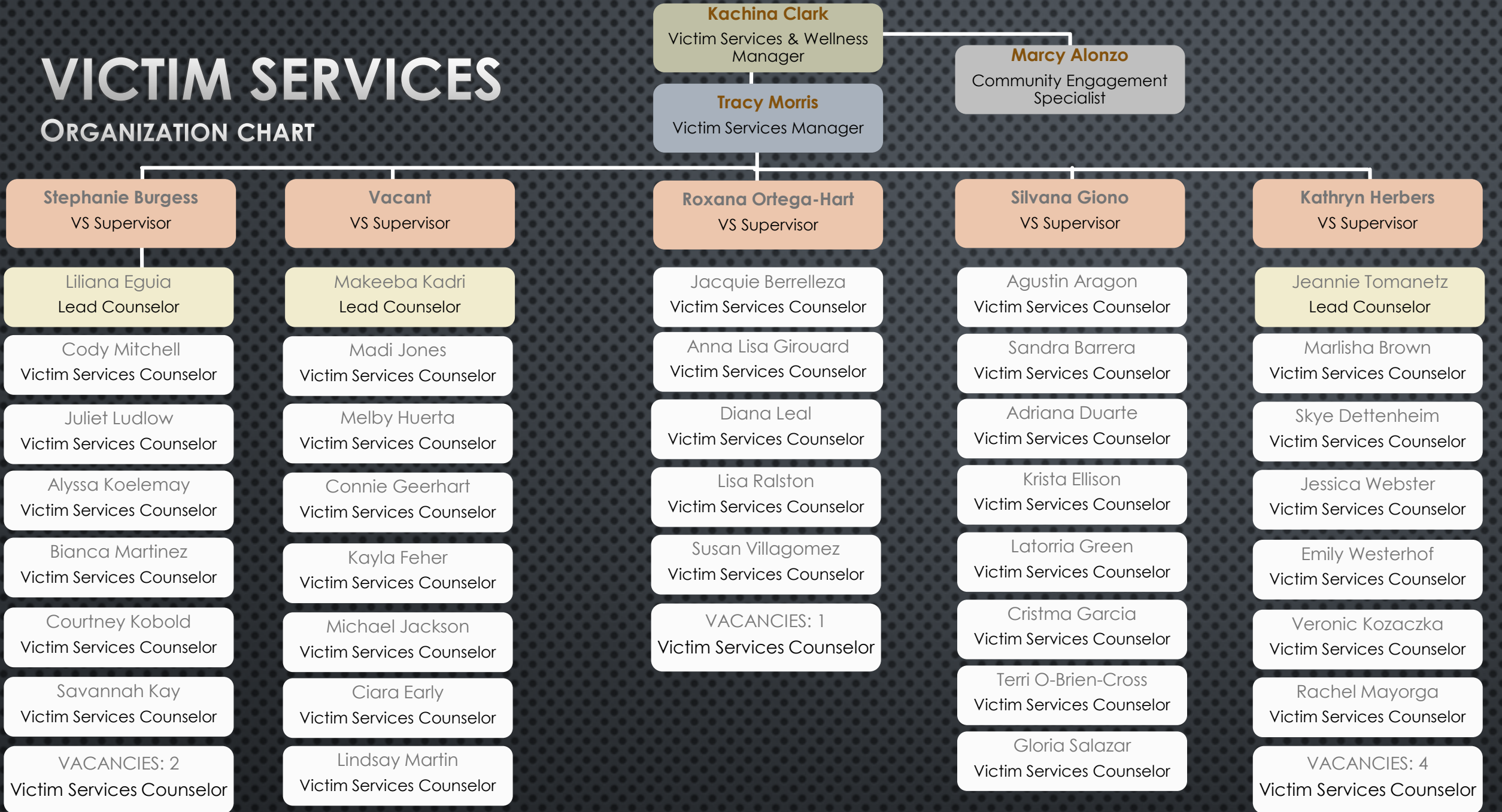
# APD VICTIM SERVICES

PROVIDING SUPPORT, TRAUMA EDUCATION, ADVOCACY, AND RESOURCE  
EMPOWERMENT FOR VICTIMS AND SURVIVORS THROUGHOUT AUSTIN SINCE  
1981.



# VICTIM SERVICES

## ORGANIZATION CHART



# VICTIM SERVICES

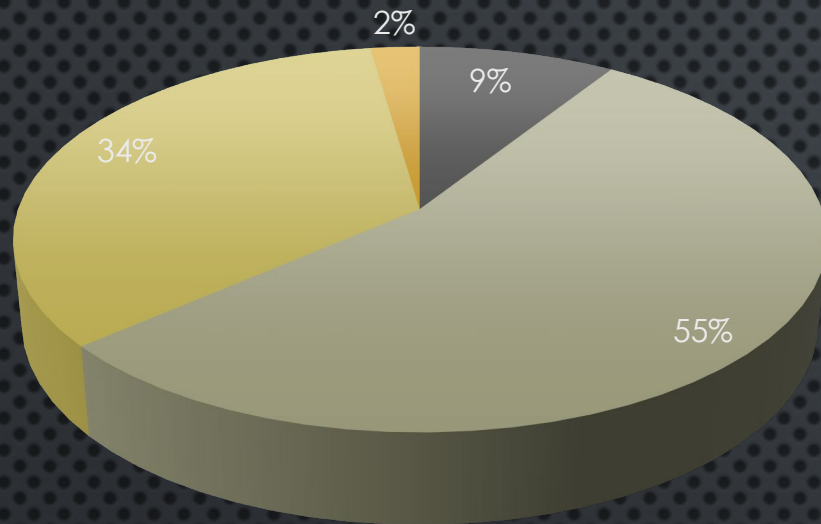
CRISIS RESPONSE TEAM (CRT)	INVESTIGATIVE SUPPORT TEAM (IST)
24/7 Mobile Response Units	Counseling Support
On-Scene Crisis Counseling	Education Related to Judicial Process
Dispatched with Officers	Psychoeducation
Address Immediate Needs	Advocacy
Resource Provision	Longer-Term Safety Planning
Advocacy within Law Enforcement	Short-Term Needs Assistance
Short-Term Safety Planning	Resource Collaboration

EMERGENCY COMMUNICATIONS	TRAINING ACADEMY
Provide short-term counseling to dispatchers & call takers	Oversee and review cadet training curriculum at the Police Training Academy to advocate for trauma-informed training



# VICTIM SERVICES TEAM FACTS

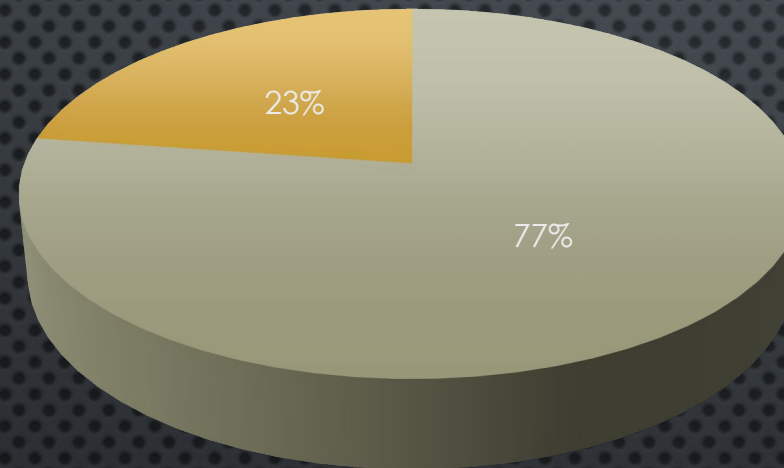
## Race/Ethnicity



■ Black/African American  
■ White/Caucasian

Austin Police Department has the largest Victim Services unit in the nation co-located within law enforcement. With 52 full-time masters-level counselors, the unit has grown since 1981 through utilization of grant funding and city support of position permanence.

## Education



■ Masters ■ Masters w/ License





# CRISIS RESPONSE TEAM

Crisis Response Team Counselors respond to the following call types to provide crisis counseling to survivors on-scene:

- Rape**
- Sexual Assault**
- Sexual Assault of a Child**
- Homicide**
- Vehicular Homicide**
- Child Endangerment**
- Death (Nature Unknown)**
- Family Violence**
- Assault with Injury**
- Human Trafficking**
- Overdose Death**
- Robbery**
- Other**



# INVESTIGATIVE SUPPORT TEAMS

Investigative Support Team Counselors provide follow-up services with victims of crime by providing assistance with:

- Survivor Interview Process**
- Crime Victims Compensation**
- Education of Judicial Process**
- Collaboration with Detectives**
- Advocacy with Housing and Leasing**
- Communication with Medical Examiner's Office**
- Understanding Investigative Process**
- Education Related to Abuse**
- Resource Navigation**
- Long-term Safety Planning**
- Court Testimony**
- Trauma Symptom Education**
- Connecting with Community Partners**

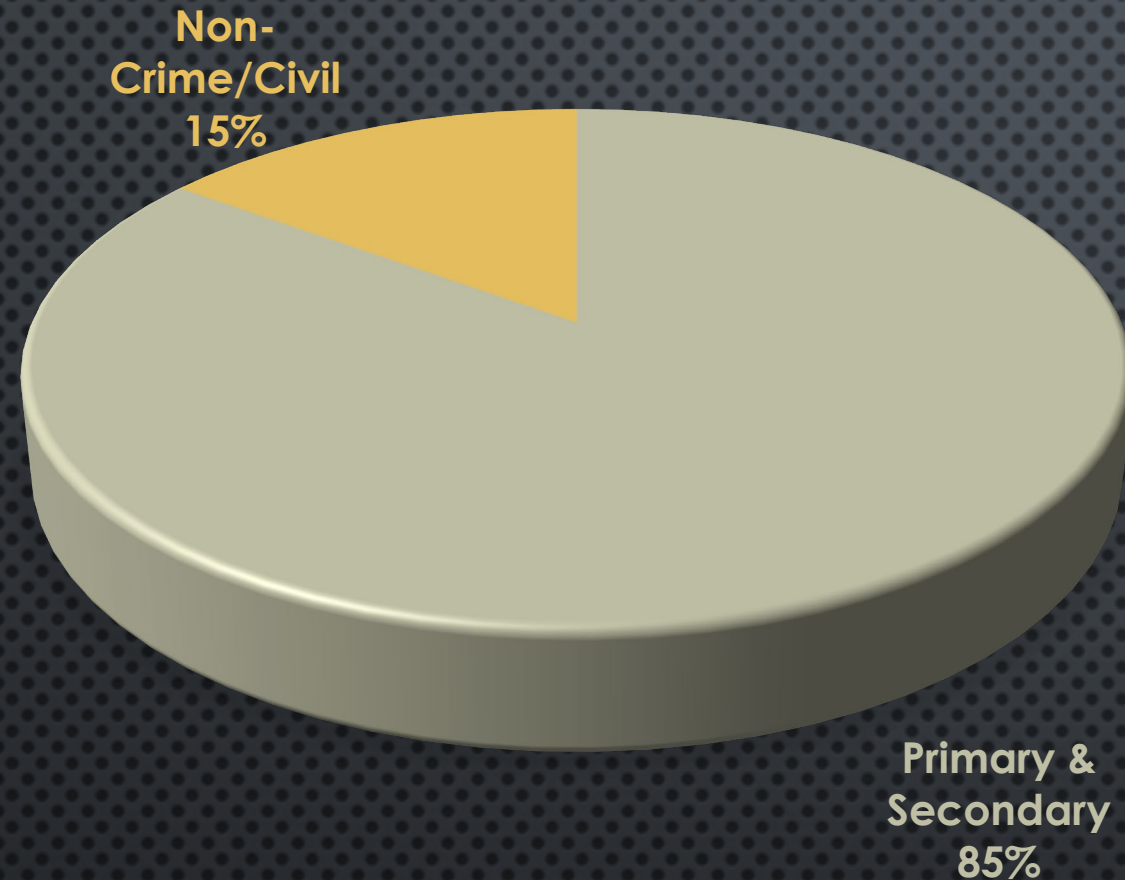




FISCAL YEAR 2022-2023

(OCT. 1, 2022-SEPT. 30, 2023)

**TOTAL SURVIVORS SERVED: 12,271**

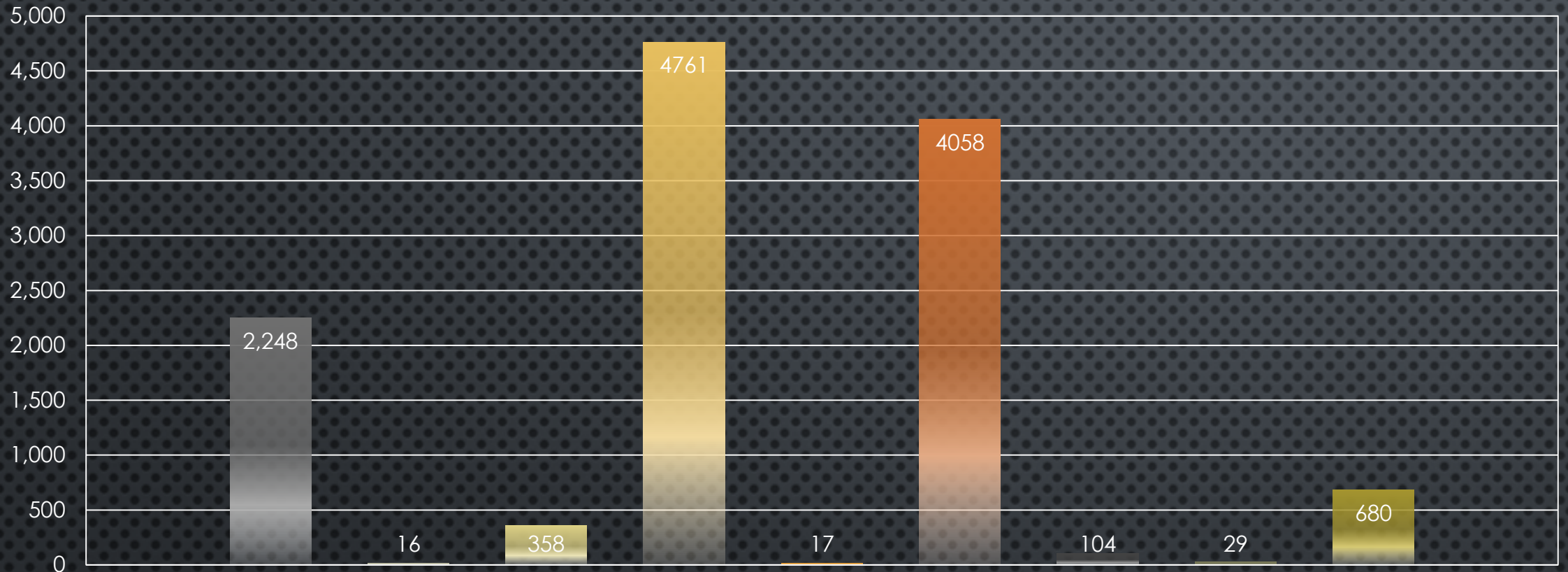




FISCAL YEAR 2022-2023

(OCT. 1, 2022-SEPT. 30, 2023)

# TOTAL SURVIVORS: RACE/ETHNICITY



Black/African American

American Indian

Asian/Middle Eastern

Hispanic/Latina/o

Pacific Islander

White/Caucasian

Multiple Races

Other Race

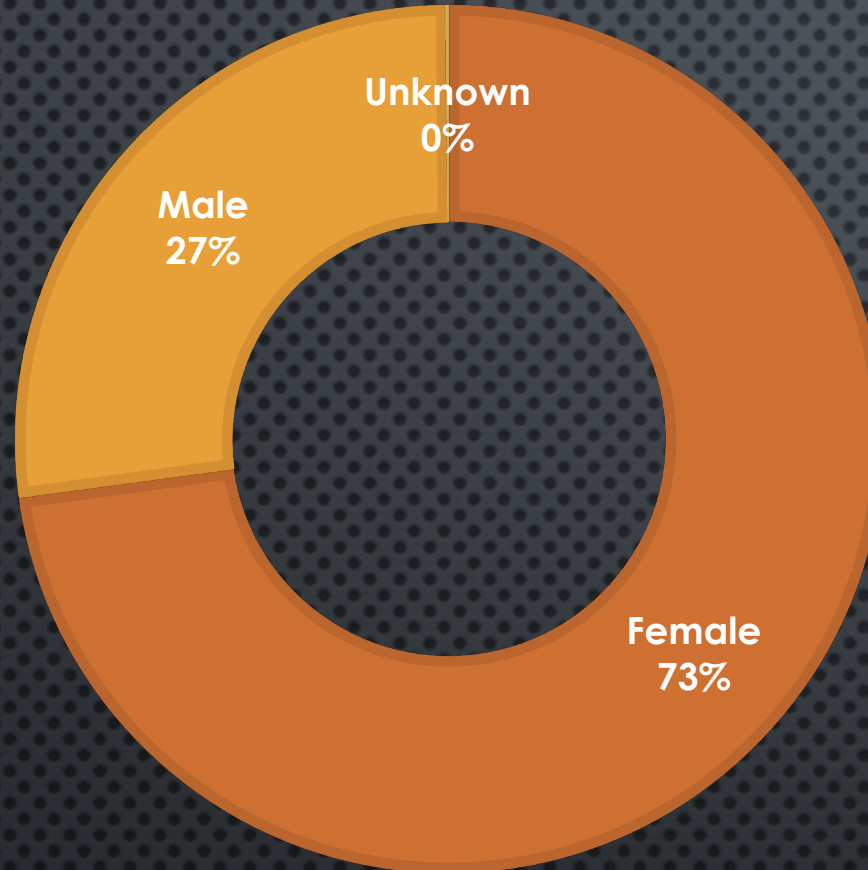
Unknown



FISCAL YEAR 2022-2023

(OCT. 1, 2022-SEPT. 30, 2023)

# TOTAL SURVIVORS: GENDER





# PROTOCOL OF NOTE

IN ADDITION TO STANDARD DISPATCH AND RESPONSE TO THE CALLS MENTIONED PRIOR, APD VICTIM SERVICES HAS ADDITIONAL PROTOCOL RELATED TO:

- AUTOMATIC DISPATCH TO ALL SEXUAL ASSAULT-RELATED CALLS FOR SERVICE
- SUPERVISOR/MANAGER NOTIFICATION OF ALL CITY OF AUSTIN EMPLOYEE DEATHS
- IMMEDIATE MANAGER NOTIFICATION OF OFFICER-INVOLVED SHOOTINGS (OIS)
  - CRISIS RESPONSE TEAM ASSIGNMENT TO OIS WHEN WITNESS AND/OR FAMILY IS PRESENT ON-SCENE
  - ASSIGNMENT AND FOLLOW-UP OF INVESTIGATIVE SUPPORT TEAM COUNSELOR
  - ADVOCACY FOR FAMILIES RELATED TO INTERNAL COMMUNICATION WITH DETECTIVES
- LARGE-SCALE INCIDENT RESPONSE PLAN INCLUSION
- DEATH NOTIFICATIONS FOR TRAVIS COUNTY MEDICAL EXAMINER



# COLLABORATIONS & COMMUNITY PARTNERS

- AUSTIN-CENTRAL TEXAS SUICIDE PREVENTION COALITION
- AUSTIN TRAVIS COUNTY FAMILY VIOLENCE TASK FORCE
- AUSTIN TRAVIS COUNTY HATE CRIMES TASK FORCE
- AUSTIN TRAVIS COUNTY SEXUAL ASSAULT RESPONSE AND RESOURCE TEAM
- CENTRAL TEXAS COALITION AGAINST HUMAN TRAFFICKING
- CHILD PROTECTION TEAM
- COLLECTIVE SEX CRIMES RESPONSE MODEL PROJECT
- IMMIGRATION SERVICES NETWORK OF AUSTIN
- TRAVIS COUNTY COMMERCIAL EXPLOITATION OF YOUTH ADVISORY COUNCIL
- PLANET SAFE CONSULTING COMMITTEE
- TRAVIS COUNTY COMMERCIAL EXPLOITATION OF YOUTH ADVISORY COUNCIL
- VICTIM SERVICES COALITION





***“COMPARED TO OTHER LARGE POLICE AGENCIES ACROSS THE COUNTRY, APD VICTIM SERVICES DIVISION, COMPRISED OF NON-SWORN COUNSELORS, SETS THE STANDARD AS A BEST PRACTICE IN RESPONDING TO AND SUPPORTING VICTIMS AND SURVIVORS OF SEXUAL ASSAULT.”***

-POLICE EXECUTIVE RESEARCH FORUM

Nov. 2022