



RMC Monthly Report

October 2023

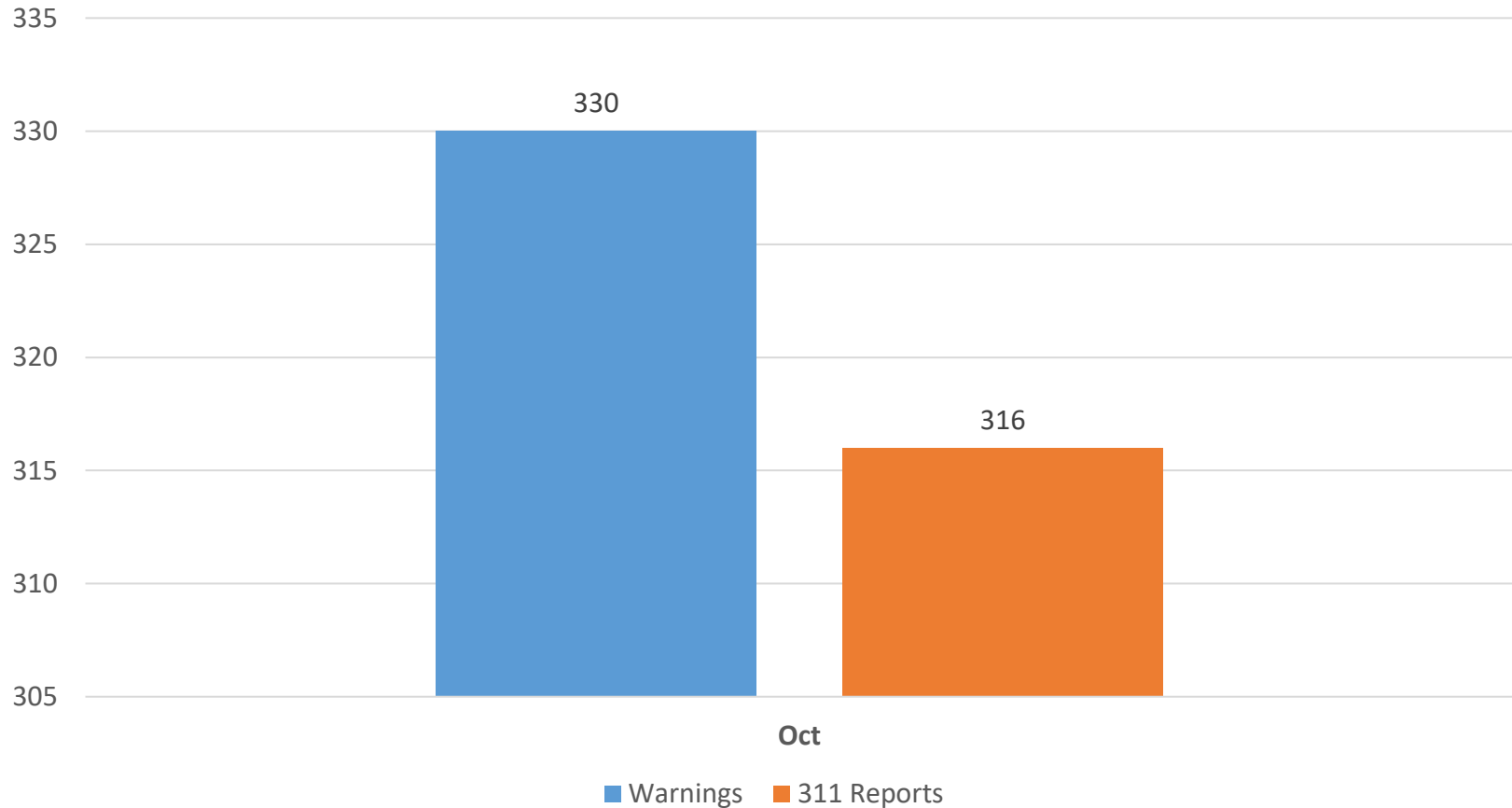
FY24

Water Conservation Division
City of Austin | Austin Water



Water Waste/Watering Restrictions Enforcement Activity, FY24 YTD

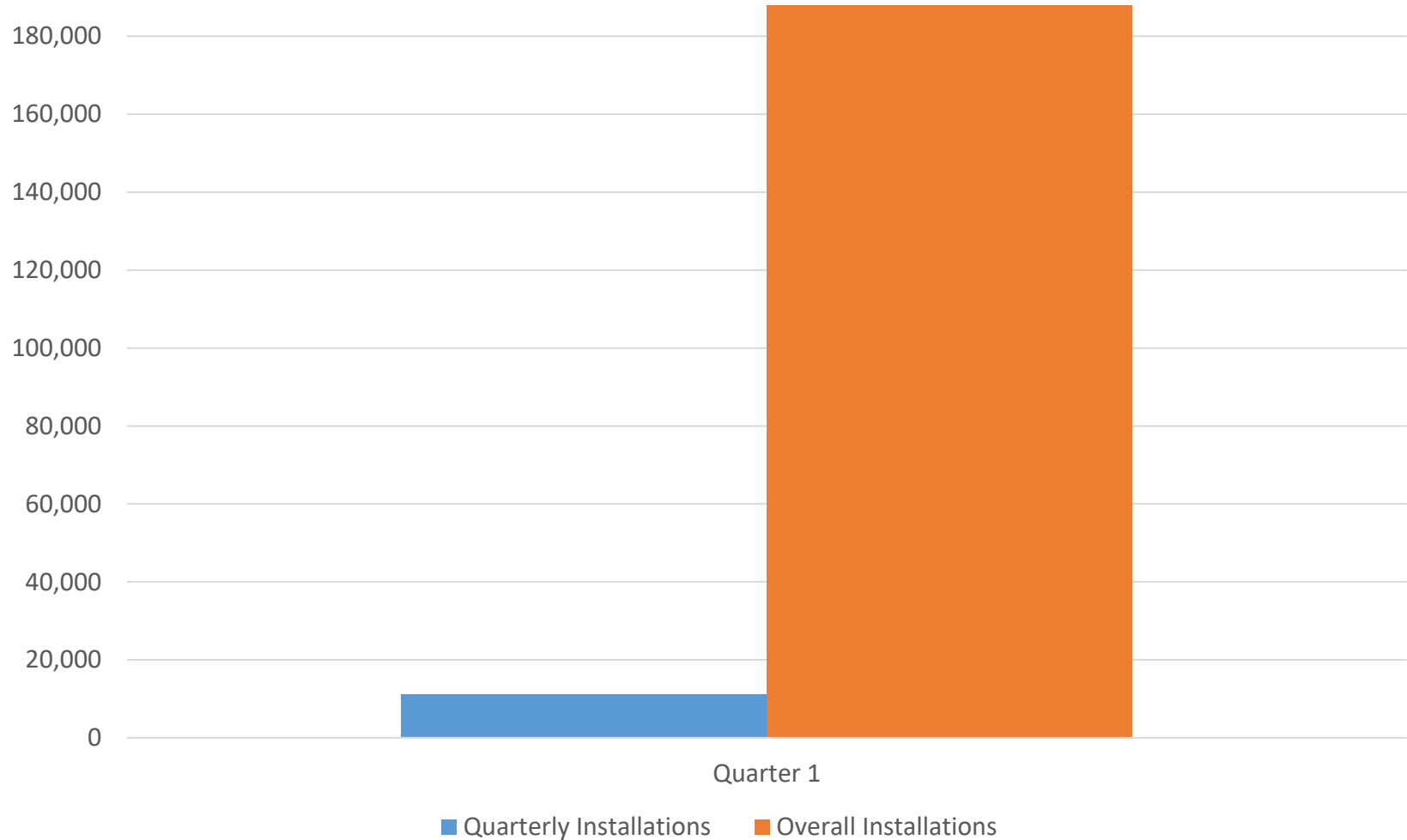
Warnings Issued and 311 Reports



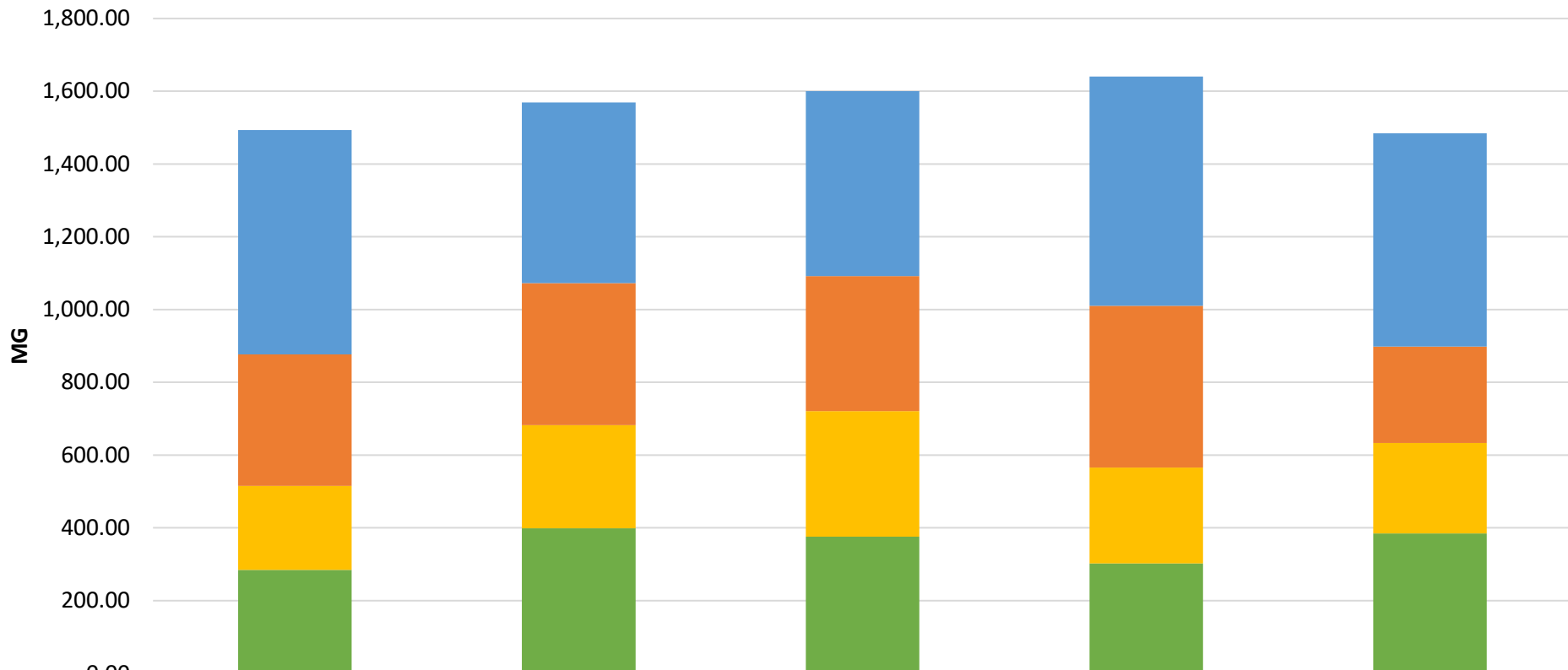
October Drought Response Stage: Stage 2



My ATX Water Meter (AMI) Installations, FY24 YTD



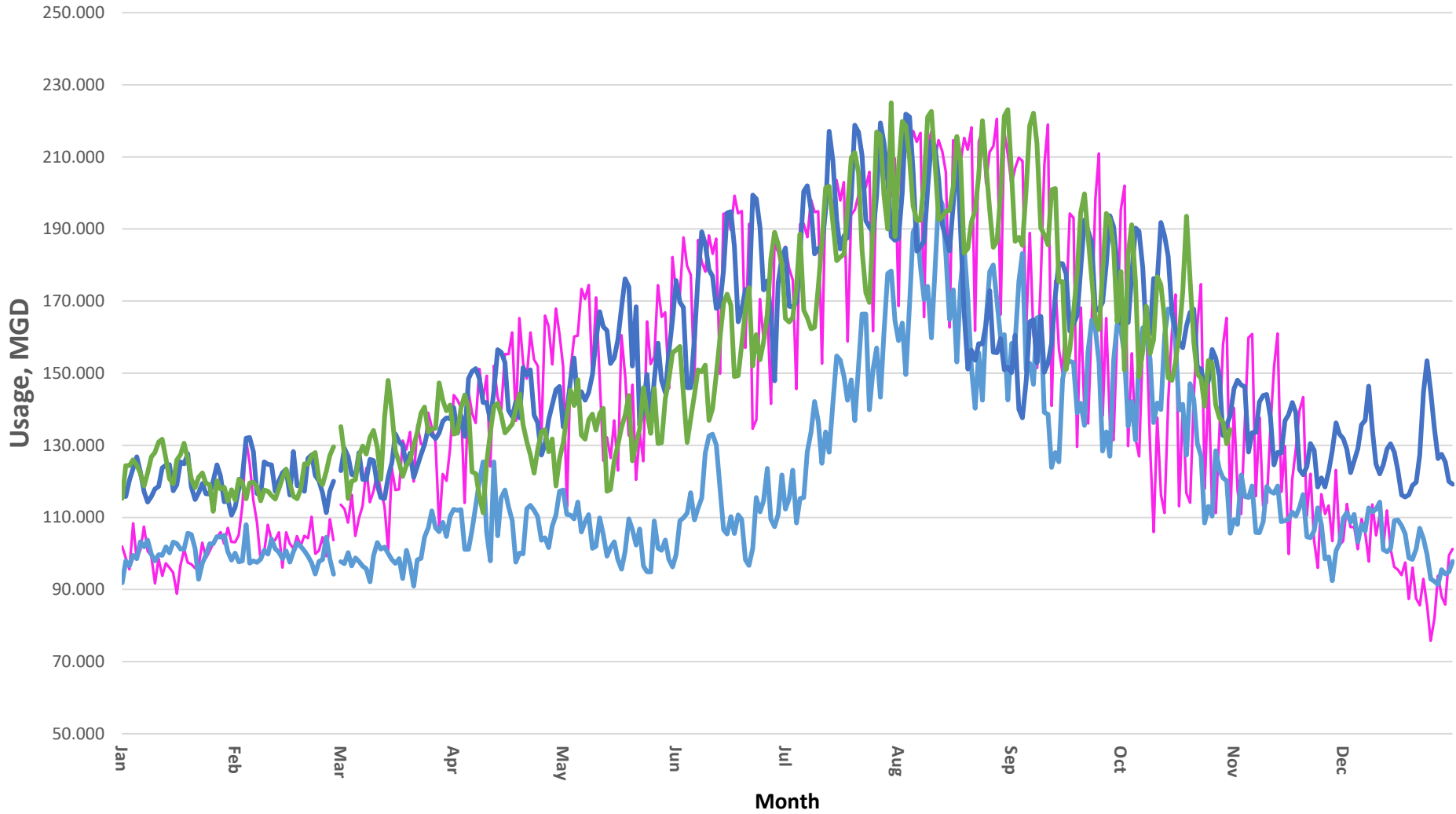
Reclaimed Water Use



	FY19	FY20	FY21	FY22	FY23
Quarter IV	616.60	496.91	507.97	630.48	586.12
Quarter III	361.47	389.94	370.96	444.20	264.64
Quarter II	230.84	284.04	345.25	263.44	248.48
Quarter I	284.14	398.30	375.67	302.27	384.91

Multi-Year Daily Water Usage

— 2011 "Dry Year" — 2015 "Wet Year" — 2022 — 2023





Water Conservation Division
City of Austin | Austin Water

