

Austin Energy FY2023 Q4 Operations Update

November 2023

Lisa Martin

Deputy General Manager & Chief Operating Officer



Agenda

Quarterly Operations Update



Executive Summary



Reliability Performance



Environmental Performance



Grid Resilience Strategic Goal

Executive Summary



Generators available all summer

Resources demonstrated 100% availability which exceeds summer availability targets



Reliability performance trend is stabilizing

Performance metrics show slightly better or the same outage duration and frequency compared to last quarter



Renewable production on-target

For the quarter, 41% aggregate renewable production as a percentage of load



Carbon-free production on-target

- For the quarter, 60% carbon-free generation as a percentage of load
- On a rolling 12-month basis, 70% carbon-free generation as a percentage of load



Austin Energy Operations Update

Reliability Performance



Generator Commercial Availability

Generation Resource	Max Summer Commercial % Availability Target	Commercial Availability Actual % Q4 FY23 Avg
Sand Hill Combined Cycle	95	100
Fayette Power Project	97	100
South Texas Project	100	100

Power Plants Performed

- 100% commercial availability – Not easy
- Peaker Units = 1,049 starts (June - Sept.)
 - Sand Hill = 100% start success
 - Decker = 95% start success

Record Heat

- Record heat = record generation
- Over 3,000 MW peak demand for first time

Summer Preparation

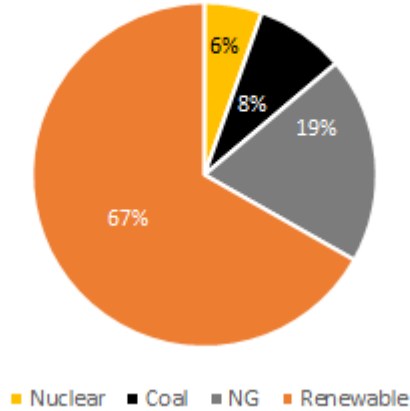
- Increased staffing on weekends
- Increased staffing after hours when tight grid conditions were expected



Kudos to all power plant employees

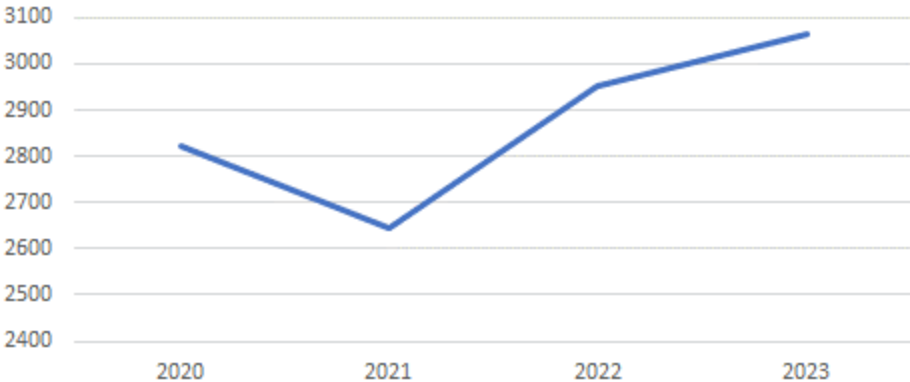
Net Generation and Load Analysis FY2023 Q4

Power Generation Cost by Fuel Type

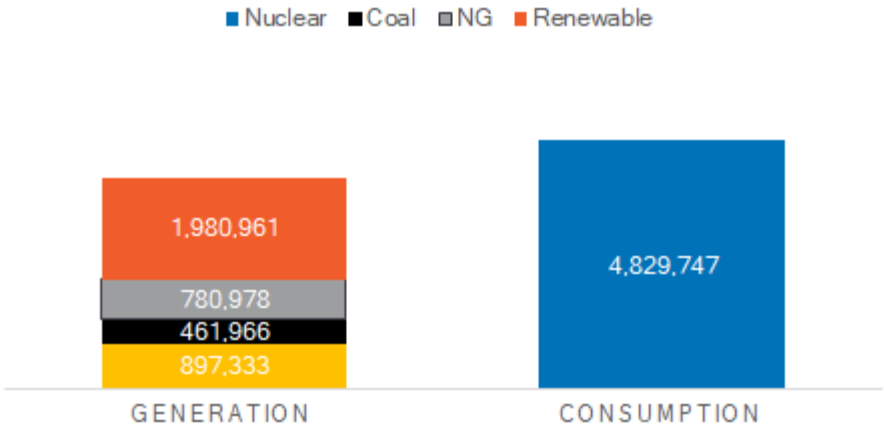


**Costs include fuel for generation, fuel transportation, renewable Power purchases agreements*

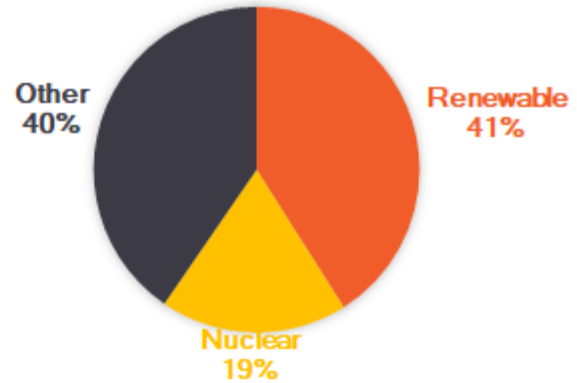
Historical FY23 Q4 System Peak Demand (MW)



CONSUMPTION VS. GENERATION (MWH)



POWER GENERATION AS PERCENT OF CONSUMPTION



System Reliability

CAIDI = Customer Average Interruption Duration Index

Average time to restore service

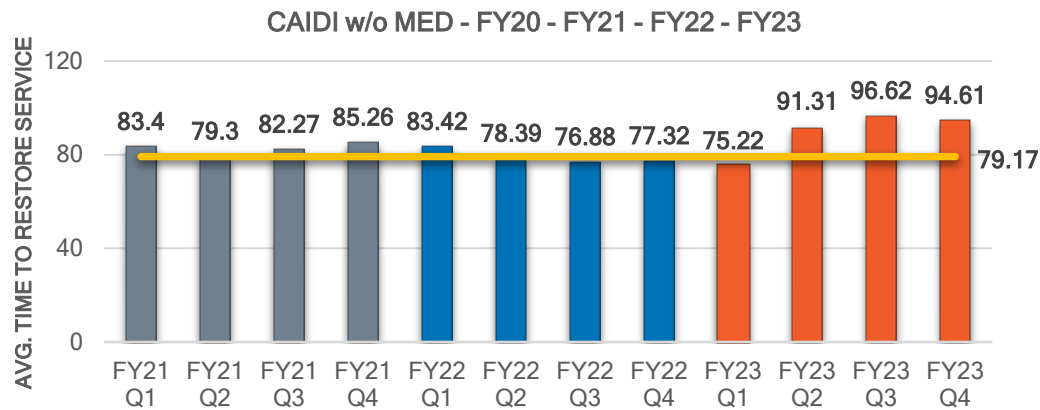
SAIDI = System Average Interruption Duration Index

Total duration of interruptions for the average customer, during a period of time

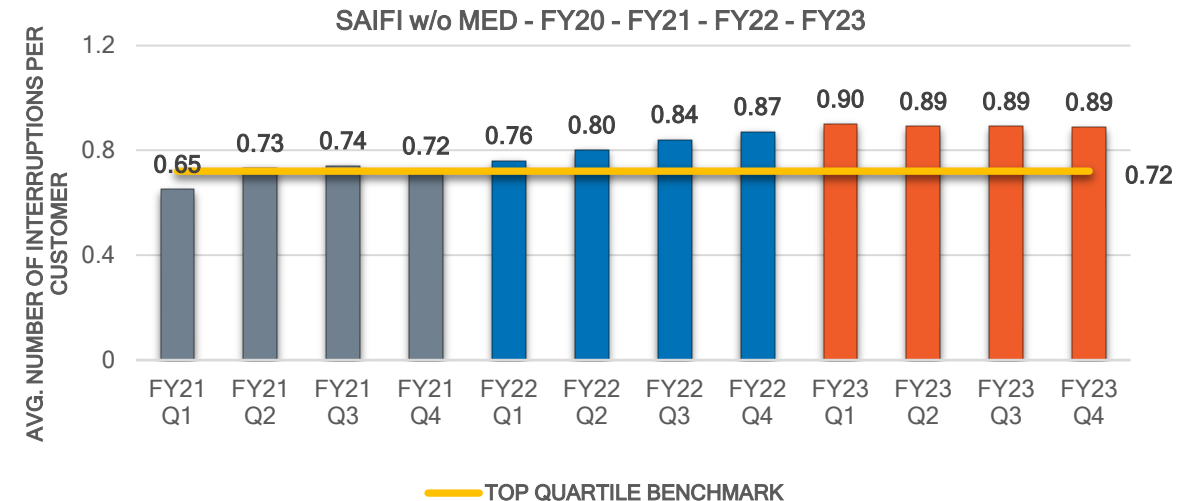
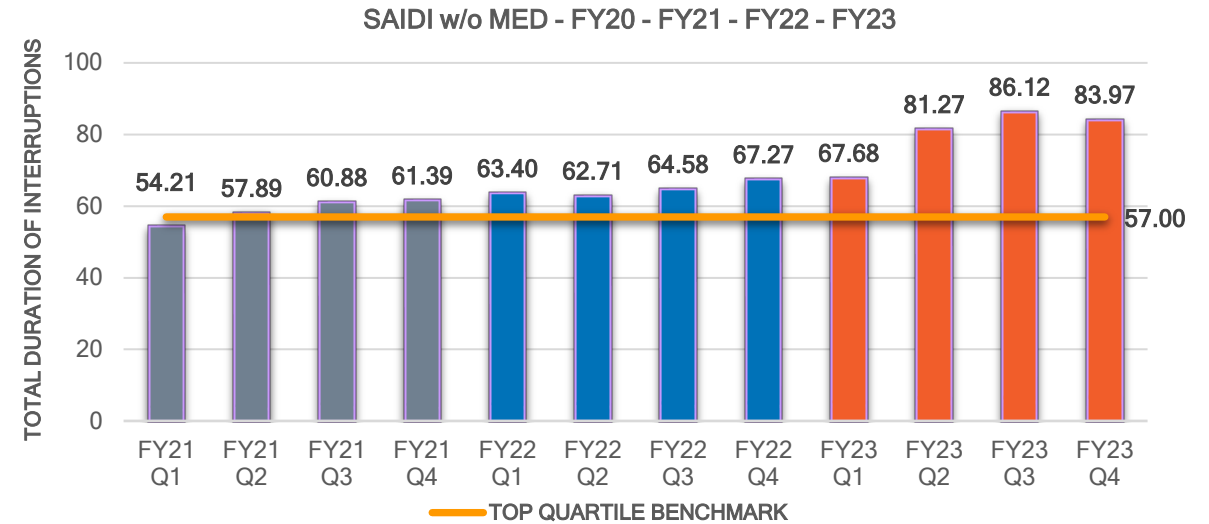
SAIFI = System Average Interruption Frequency Index

How often the average customer experiences a sustain interruption, over a period of time

MED = Major Event Days



TOP QUARTILE BENCHMARK



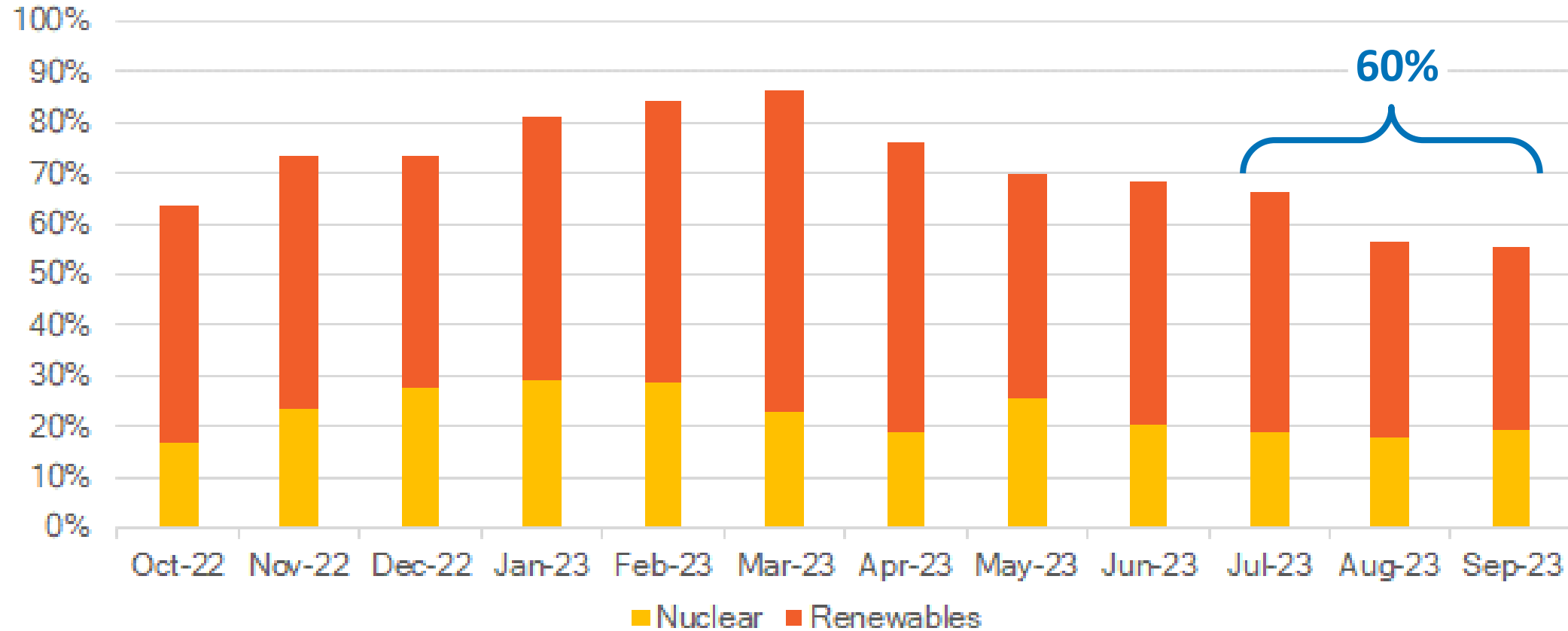
Austin Energy Operations Update

Environmental Performance



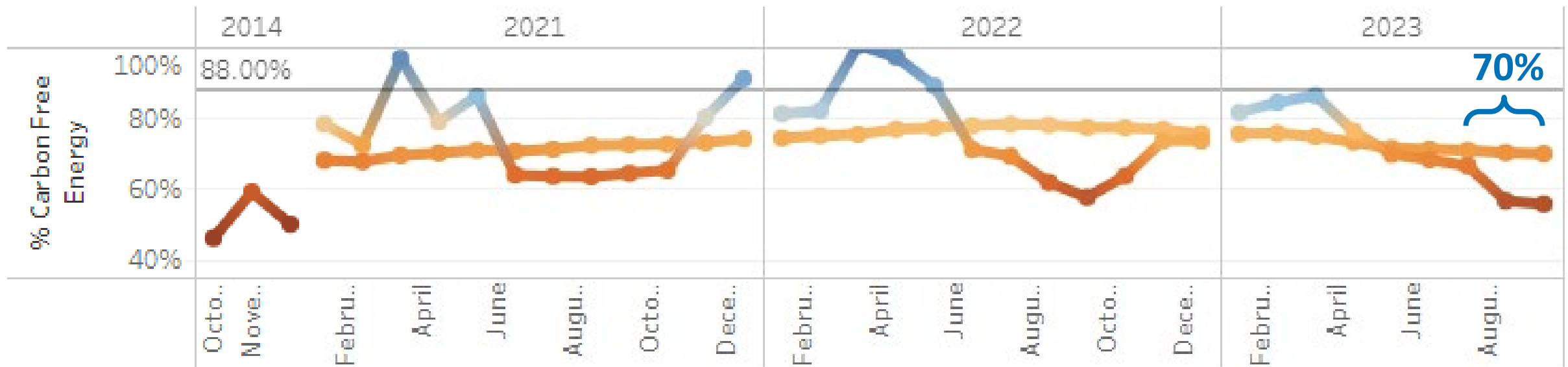
Carbon-Free Generation as a Percentage of Load

Monthly Data



Carbon-Free Generation as a Percentage of Load

Rolling 12-Month Average Data



Austin Energy Operations Update

Grid Resilience Strategic Goal



Grid Resilience Initiatives



Austin Energy Strategic Goals



Grid Resilience



Improve Distribution System Reliability

Identify, rank, and address feeder maintenance needs in areas historically impacted by outages and most susceptible to wildfire risk.

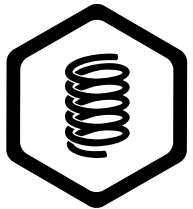
- TDEM Building Resilient Infrastructure and Communities (BRIC) award – Overhead Hardening Study
- Distribution Undergrounding Feasibility Study – Vendor evaluation underway



Transmission System of the Future

As part of the 2030 Resource Plan, Austin Energy contracted for a transmission system study to investigate ways to achieve the plan's goals while mitigating the impacts of the loss of generation plants.

- Transmission System Assessment completed in June 2023
- Project implementation underway – Iterative annual assessments planned



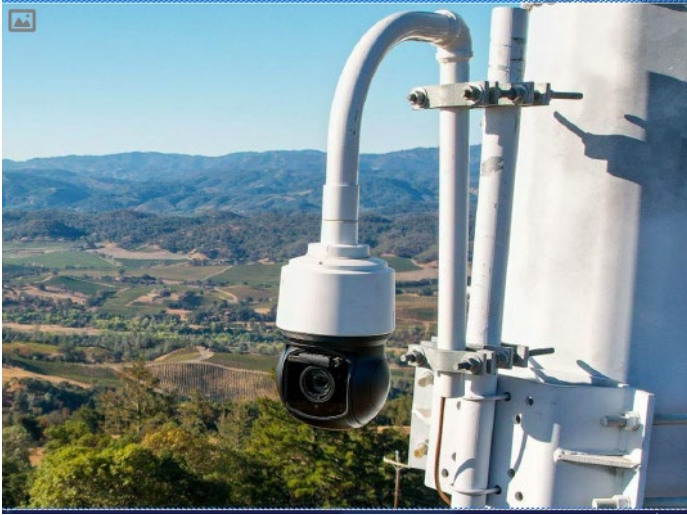
Resiliency as a Service (RaaS) Program

Providing resiliency and safety to customers and the community through a program that distributes the value of distributed generation assets across the customer base; meets SB398 back up generation rules.

- Full-time RaaS Program Manager on board
- Received and processed four Feasibility Studies, a first step for interested customers

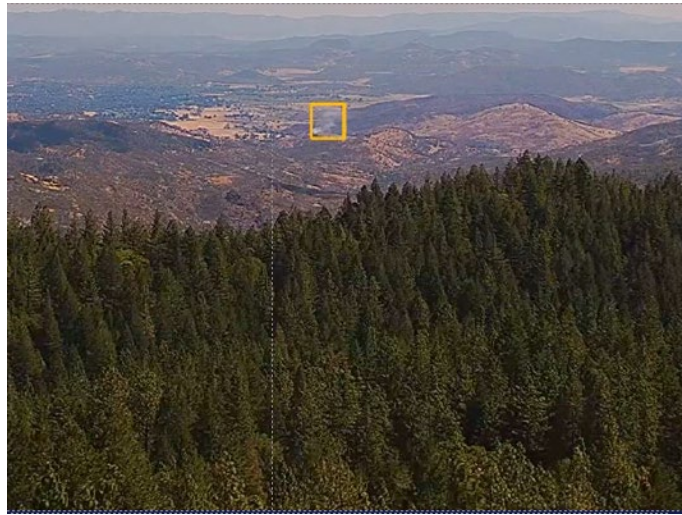


Pano AI Wildfire Detection Services



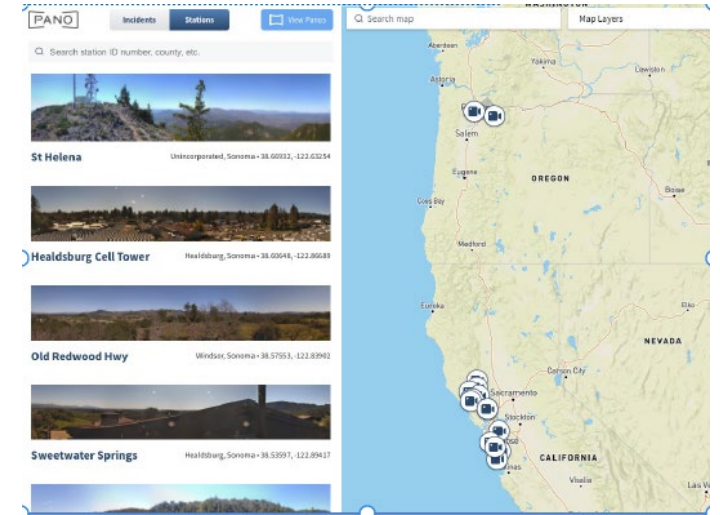
Cutting-edge Hardware

provides advanced imagery via two rotating cameras, capturing ultra-high-definition & 360-degree panorama images every minute



AI Detection + Human Intelligence

monitor 24/7 for the first indications of smoke across the service area



Easy-to-use Interface

unifies advanced features into a single platform – including asset proximity, zoom-to-investigate, incident triangulation and alerts



Site Audits and
Selection



Views are
Approved



1st Site Live
Summer 2024



**Customer Driven.
Community Focused.SM**



Confidential & Proprietary ©2018 Austin Energy. All rights reserved. Austin Energy and the Austin Energy logo and combinations thereof are trademarks of Austin Energy, the electric department of the City of Austin, Texas. Other names are for informational purposes only and may be trademarks of their respective owners.