

Request for New
Special Use
Seniors Building

Gustavo “Gus” Garcia Recreation Center

Garcia Recreation Center Sits On 47 Acres ~20,000 Sq Ft Building

After School & Teen Programs – After 1PM – 5PM Weekdays These Populations Are Mainly Served

Summer Day Care – 8AM-5PM - 90% Of The Facility Is Used For This Population's Programs During Summer

Adult Under 55 Program – 11Am – 6PM - Seasonally Scheduled

Senior Programs Including Seniorcise – 9AM To 1PM - Seasonally Scheduled

Senior Programs Extremely Limited During Summertime

Seniorcise! – *15 Years Strong!*

Meals-on-Wheels Lunch Location & Austin Food Pantry Monthly Distribution Site

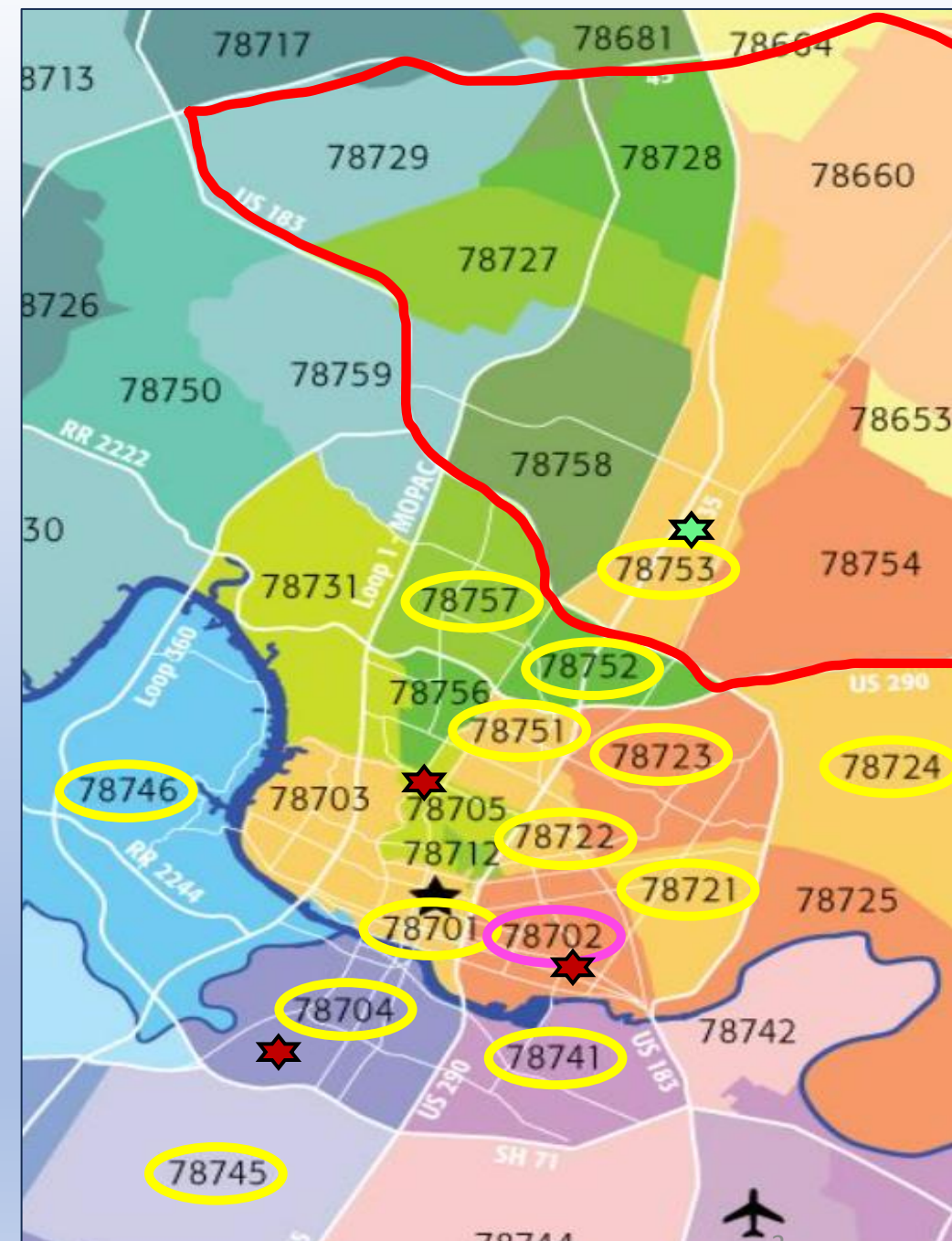
Community Recreation & Senior Activity Centers By Zip Code


★ Garcia Recreation Center & Park
Only Recreation North Of 290 & East Of 183
(City Council Districts 1, 4, 6 & 7)

★ Senior Activity Centers – Special Use

○ Yellow = Zip Code With 1 Multi-use Recreation Center

○ Pink = Zip Code With 5 Multi-use Recreation Centers



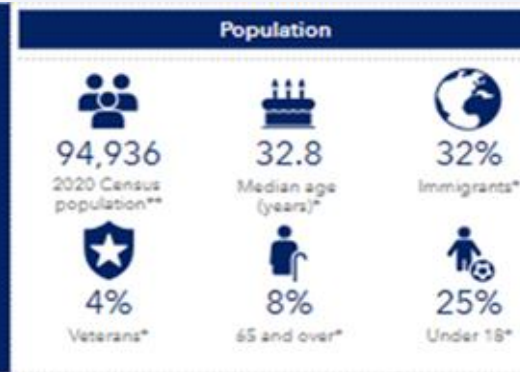



Council District

4

Council District Demographic Profiles

City of Austin
Planning Department
Strategic Data Initiatives



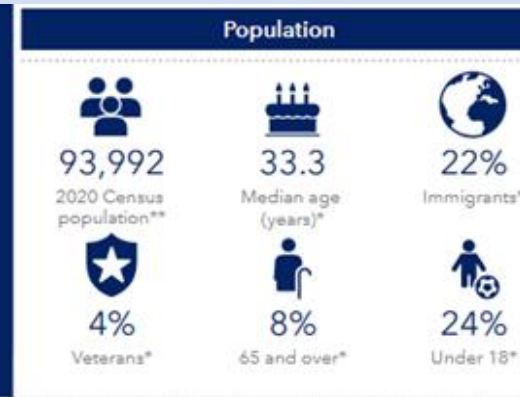



Council District

1

Council District Demographic Profiles

City of Austin
Planning Department
Strategic Data Initiatives



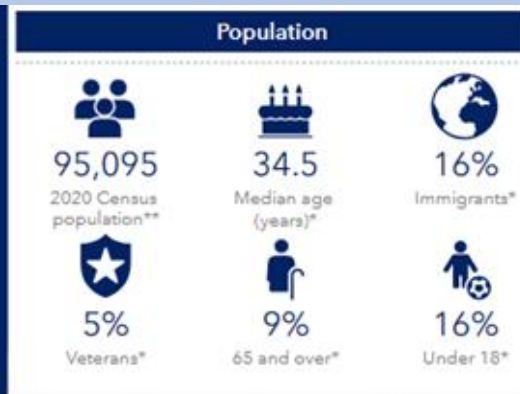


Council District

7

Council District Demographic Profiles

City of Austin
Planning Department
Strategic Data Initiatives



Disproportionally
Marginalized
Population

We Need Your Help To
More Effectively Serve
The Aging Population
Therein.

Demographic Profile Takeaway

	District 4		District 1		District 7	
District population	94,936		93,992		95,095	
Total Numbers	Population Percentage	Total Number	Population Percentage	Total Number	Population Percentage	Total Number
Senior (65+) population	8%	7,595	8%	7,519	9%	8,559
Percentage of Seniors living alone	22%	1,671	22%	1,654	16%	1,369
Immigrant population	32%	30,380	22%	20,678	16%	15,215
Population living low/moderate income	74%	70,253	63%	59,215	41%	38,989

WE ARE GETTING CRAMPED!!!

Year to Date Program Participant Attendance		2019	2020	2021	2022	*2023 Yr to Date
Youth Programs	10 weeks Summer Camps	417	0	148	438	446
	Afterschool and holiday camps	222	88	259	399	170
	Gus Garcia Winter Camp	250	0	138	198	108
	Spring Break Camp at GGRC	23	19	0	23	24
	NEW Youth out of school time Programs				364	404
Totals		912	107	545	1,422	1,152
Youth Sports	Youth Soccer	131	43	42	67	133
	Youth Basketball	160	0	0	108	120
Totals		291	43	42	175	253
Teens Programs	Teen afterschool	75	0	0	120	100
	Teen Summer camp	107	0	45	73	98
	Totally Cool Totally Art	75	0	0	100	120
	NEW Youth out of school time Programs					105
Totals		257	0	45	293	423
Adult Programs	Drop ins, Open Gym, Mixfit, NEW Pickleball, Volleyball	1,775	2,789	226	8473	10029
Totals		1,775	2,789	226	8,473	10,029
Senior Programs	Seniorcise, Tai Chi, Bible studies, Ping Pong, Art, Dance, Sewing, Golden Rollers, BINGO, Meals on Wheels,	1,351	2,006	562	1190	3113
Totals		1,351	2,006	562	1,190	3,113

Significant Increase In Center
Usage Over 2019
Pre-pandemic Numbers

Adult Programs Participation
Has Increased Exponentially
Over Pre-pandemic Numbers

Senior Program Participation
Has Seen A Significant Increase

* NOTE: Numbers are year to date

When Comparing Our Facility Amenities With Those Of Senior Activity Centers, We See A Huge Disparity In The Space Afforded Our Seniors.

Gus Garcia Seniors Have

- No Permanently Dedicated Space Allotted For Enrichment Activities.
- Seasonally Dependent Space Availability
- No Secured Storage For Materials/Supplies For Classes.
- A Strong Need For Seniors Only Building

Gymnasium

Only Room Large Enough To
Accommodate Seniorcize Class



Meets 3 Times Weekly

Average Daily Attendance ~45
(Pre-pandemic Attendance 55-60)

Attendee Age Range 55-97

Senior's Birthday Celebrations



Senior Activity Centers



LSAC –
Large Open Exercise And Meeting Room

CGSAC
(Open) Partition Wall Between Lunch & Exercise Rooms



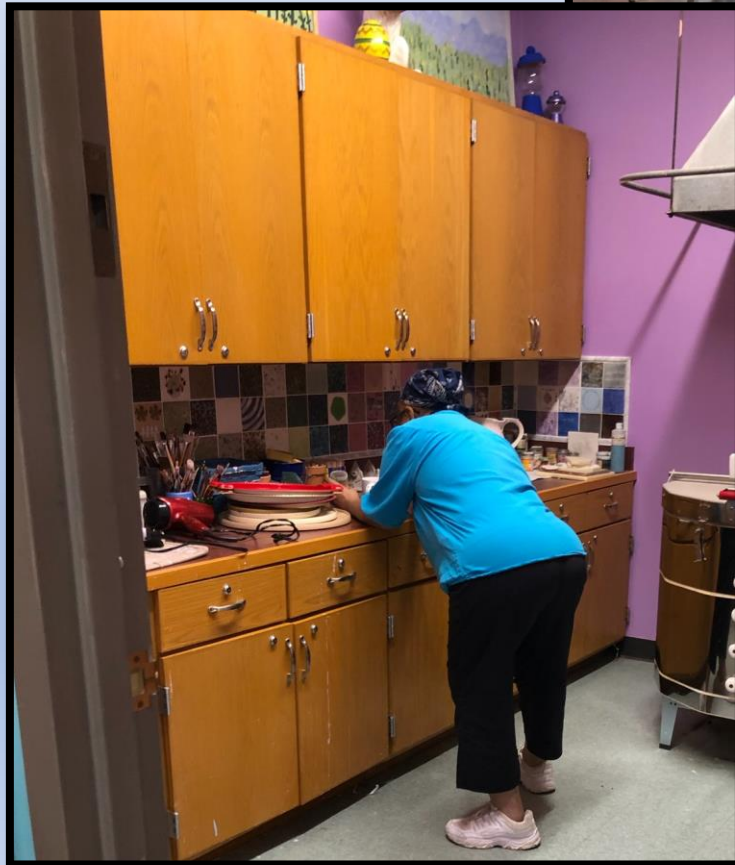
SASAC –
(Closed) Partition Wall Between Lunch & Exercise Rooms

Gus Garcia Multi-Use Room



Senior Art Room - On Hold To Support Day Care & Youth Programs

Other Centers' Art & Craft Spaces



Gus Garcia Center Limited Game Areas

Two Lobby Tables For Board Games.



Ping Pong Tables Are Extremely Popular



Other Centers' Game Rooms

SASAC & CGSAC



Separate Game & Puzzle Areas For Other Centers

Sasac —
Game & Puzzle Tables Combined
With Technical Center



CGSAC — Game And Puzzle Tables
Active Pinochle Group



LSAC — Active Bridge Club

Summary

- Center positively supports the needs of the surrounding population.
- Increase In Program Participation Has Furthered Space Limitations.
- Dedicated Space For Senior Enrichment Activities Desperately Needed.
- The Centers' Usage Numbers Support An Expansion
- The Site Easily Supports The Addition Of A Building
- Senior Participation Supports Special-Use Building

Senior Activity Centers Provide

A Space To Enjoy Activities Safely And Socialize Comfortably.

Easy Access To Health & Wellness Classes, Meal & Nutrition Plans and Programs That Teach Participants How To Manage And Delay The Onset Of Chronic Disease.

Senior Activity Centers Provide A Place For Friendship And Companionship.

Gus Garcia Seniors Request Your Support

We would greatly appreciate you

- Positively Responding In Our Favor When Reporting To The Parks And Recreation Board
- Positively Responding In Our Favor When Reporting To City Council

Thank You!