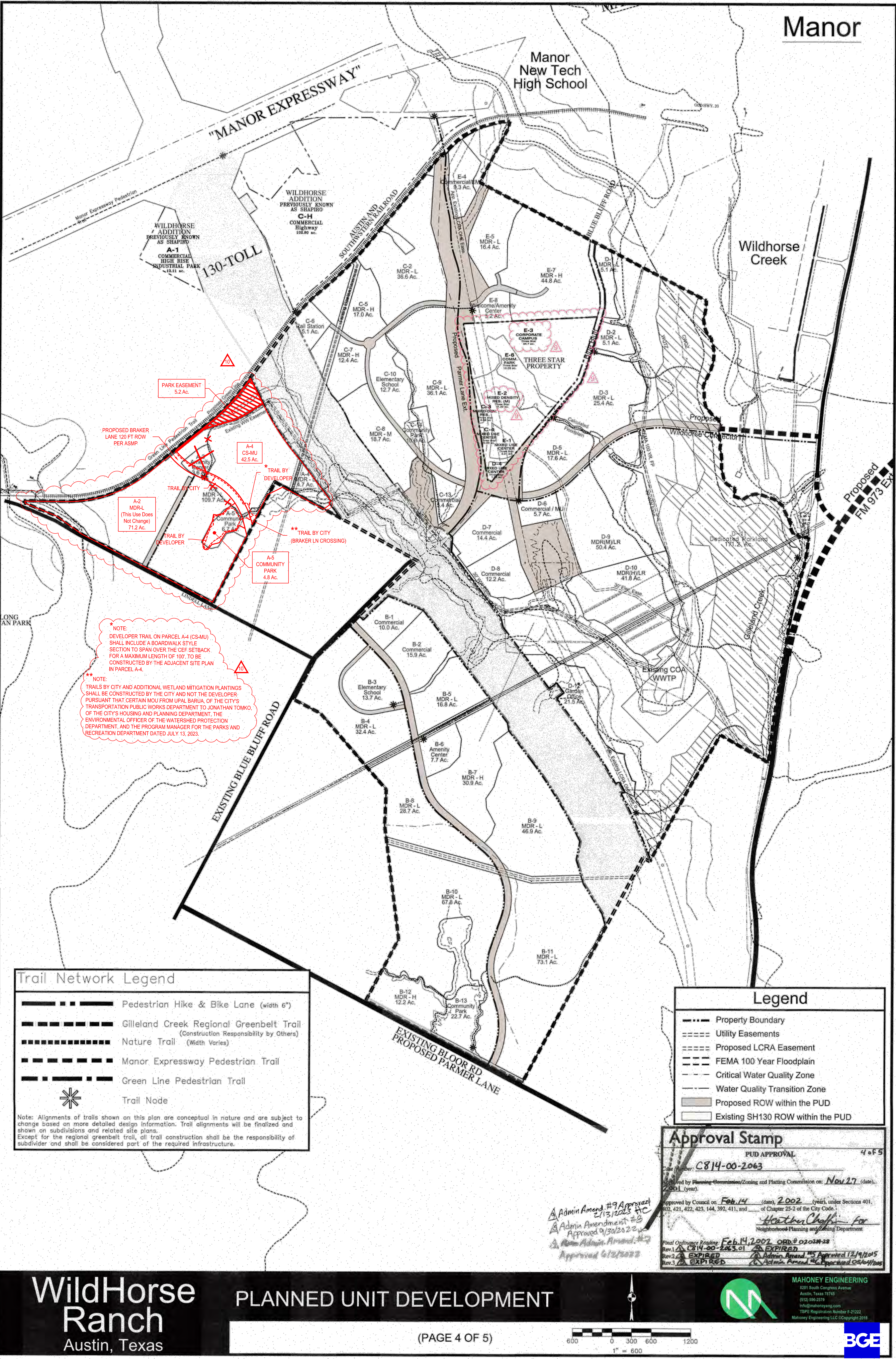






Manor



Trail Network Legend

Legend

- Pedestrian Hike & Bike Lane (width 6")
- Gilleland Creek Regional Greenbelt Trail (Construction Responsibility by Others)
- Nature Trail (Width Varies)
- Manor Expressway Pedestrian Trail
- Green Line Pedestrian Trail
- Trail Node

Note: Alignments of trails shown on this plan are conceptual in nature and are subject to change based on more detailed design information. Trail alignments will be finalized and shown on subdivisions and related site plans. Except for the regional greenbelt trail, all trail construction shall be the responsibility of subdivider and shall be considered part of the required infrastructure.

Legend

Legend

- Property Boundary
- Utility Easements
- Proposed LCRA Easement
- FEMA 100 Year Floodplain
- Critical Water Quality Zone
- Water Quality Transition Zone
- Proposed ROW within the PUD
- Existing SH130 ROW within the PUD

Approval Stamp

PUD APPROVAL

Case Number: C814-00-2063

Approved by Planning Commission/Zoning and Platting Commission on: Nov 27, 2001 (year).

Approved by Council on Feb 14, 2002 (date), 2002 (year), under Sections 401, 402, 421, 422, 423, 144, 392, 411, and of Chapter 25-2 of the City Code.

Heather Chappell for Neighborhood Planning and Zoning Department

Final Ordinance Reading: Feb 14, 2002 ORD # 0202H-28

Rev. 1: C814-00-2063.01 EXPIRED

Rev. 2: EXPIRED

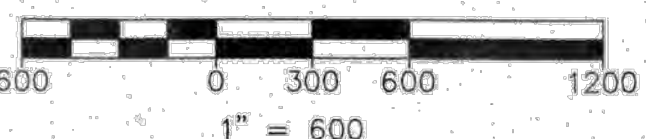
Rev. 3: EXPIRED

Admin. Amend. #5 Approved 12/9/2015

Admin. Amend. #6 Approved 05/04/2016

WildHorse Ranch  
Austin, Texas

PLANNED UNIT DEVELOPMENT

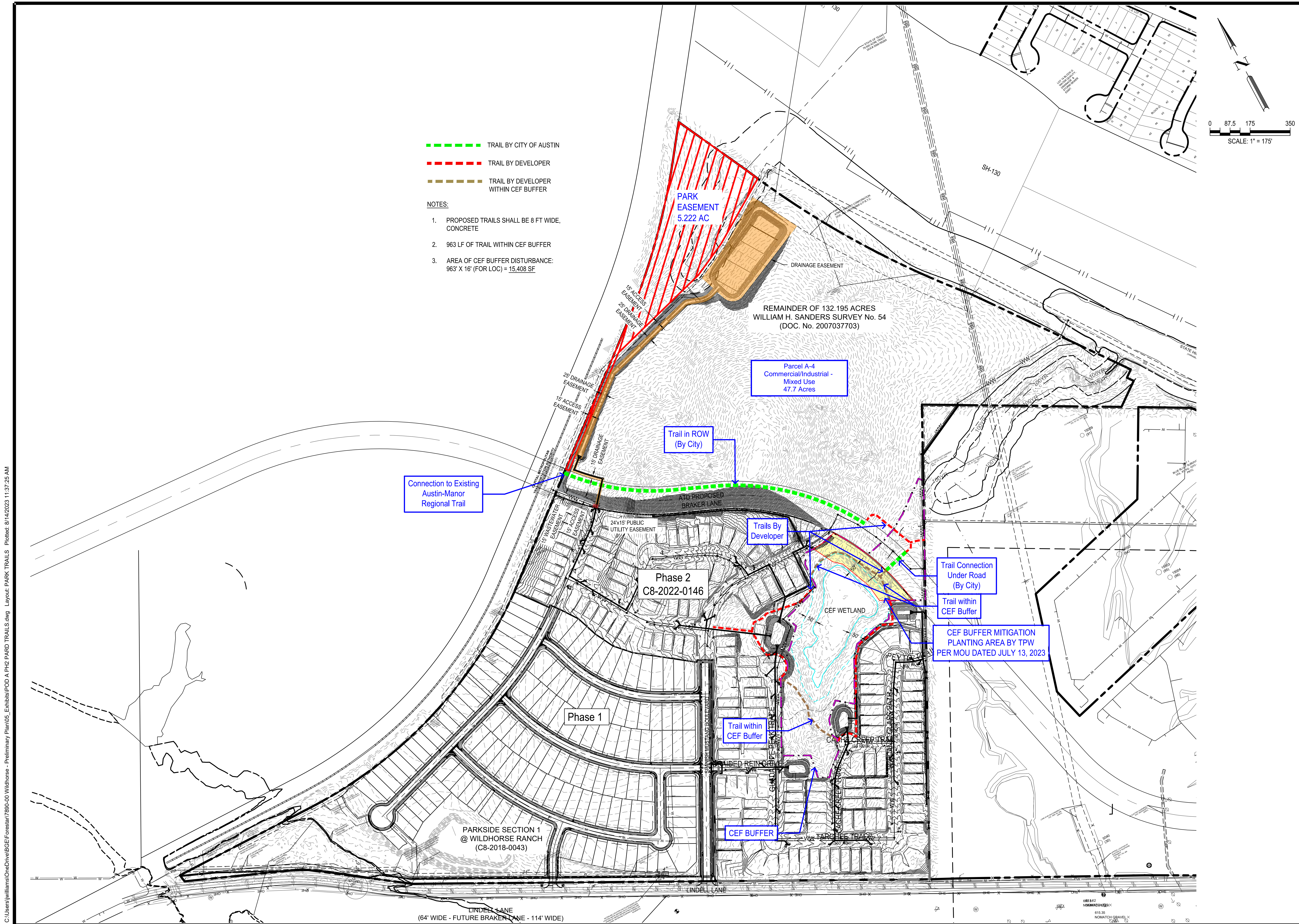


MAHONEY ENGINEERING  
2301 South Congress Avenue  
Austin, Texas 78745  
(512) 586-2379  
Info@mahoneyeng.com  
TBPB Registration Number F-21222  
Mahoney Engineering LLC Copyright 2019





C:\Users\jwilliams\OneDrive\BGE\Forestall\7890-00 Wildhorse - Preliminary Plan\05 Exhibits\POD A PH2 PARD TRAILS.dwg Layout: PARK TRAILS Plotted: 8/14/2023 11:37:25 AM



3 of 3		APR
	DATE	REV
	DESCRIPTION	
DESIGNED BY:		
REVIEWED BY:		
DRAWN BY:		
BGE		
BGE, INC. 101 W. Louis Henna Blvd. Suite 400 AUSTIN, TX 78728 TEPE Registration No. F-1046 TEL 512.979.0060 www.bgeinc.com		
WILDHORSE POD A		
TRAIL PLAN FOR PUD AMENDMENT		
SHEET 1 OF 1		