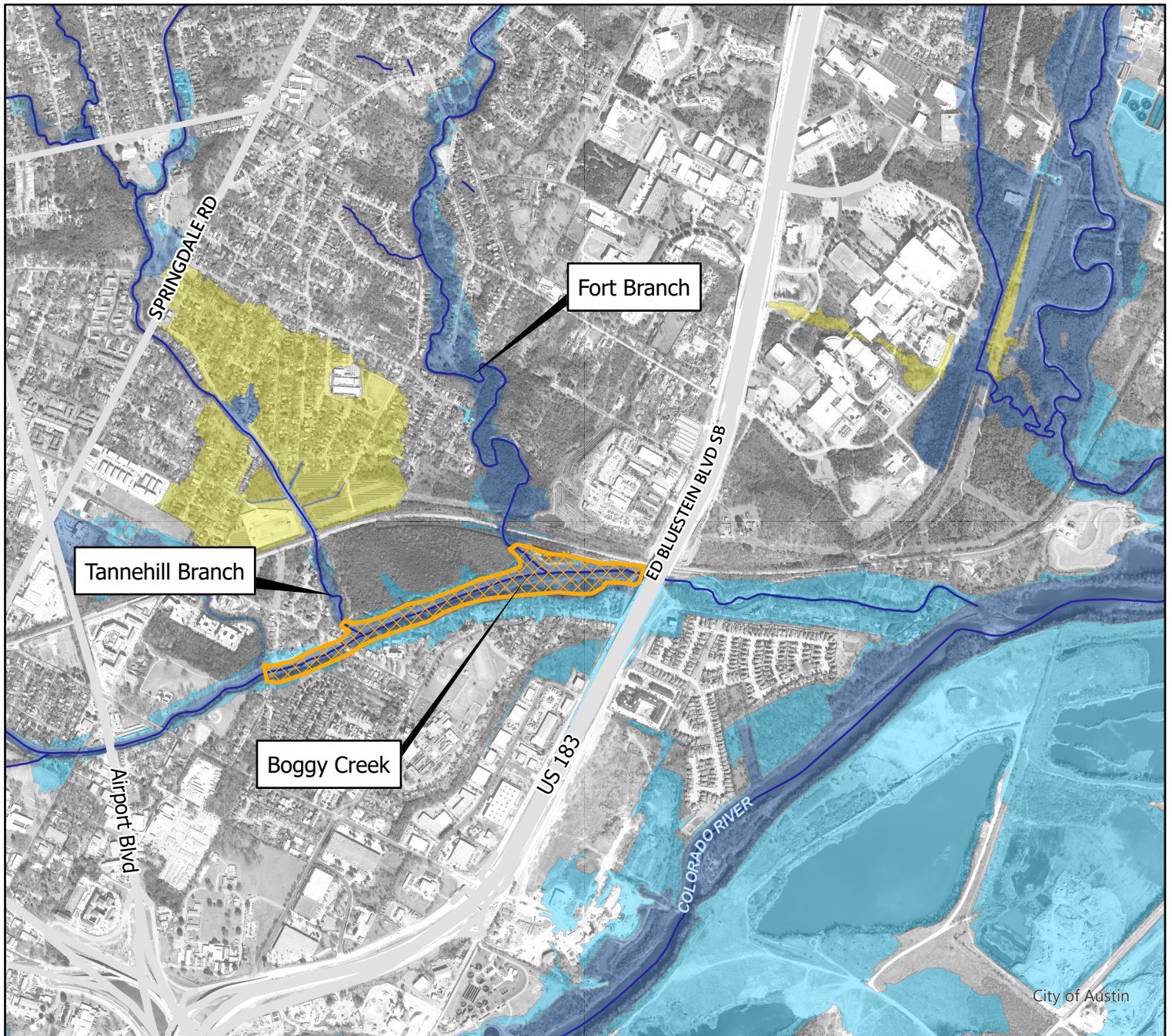




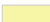
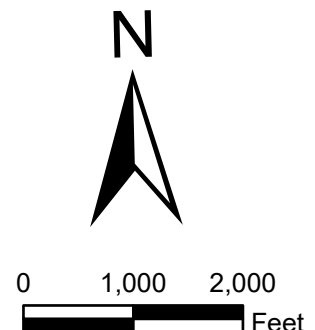


# Boggy Creek Ecosystem Restoration US Army Corps of Engineers 1135 Continuing Authorities Program (CAP)



-  1135 CAP Project Area
-  Creek Centerlines
- City of Austin  
Floodplains**
-  100-Year
-  25-Year
-  FEMA Zones



This product has been produced by the Watershed Protection Department for the sole purpose of geographical reference. No warranty is made by the City of Austin regarding specific accuracy or completeness. It is for informational purposes and may not have been prepared for or suitable for legal, engineering or surveying purpose. It does not represent an on-the-ground survey and represents only the approximate relative location of project boundaries.