

# Austin Resilience Hub Network Update

---

Austin Travis County Food Policy Board

December 11th, 2023



# Outline

1. What are Resilience Hubs
2. City Facilities
3. Community Facilities
4. Community Capacity

A man wearing a white hard hat, safety glasses, and a tan shirt is using a chainsaw to cut a large, fallen tree branch in a park. The branch is thick and dark, and the man is standing on a grassy area. In the background, there are other trees and a fence.

# Why do we need a Resilience Hub Network?

## More and stronger disasters

- Extreme weather events
- Power and water outages
- Health & safety emergencies

## Shocks and stresses highlight the need for

- Accessible community spaces
- Distribution centers (water, food, medicine, etc.)
- Aligned City services and information
- Back-up power & water
- Space of refuge during events
- Truly engaging community



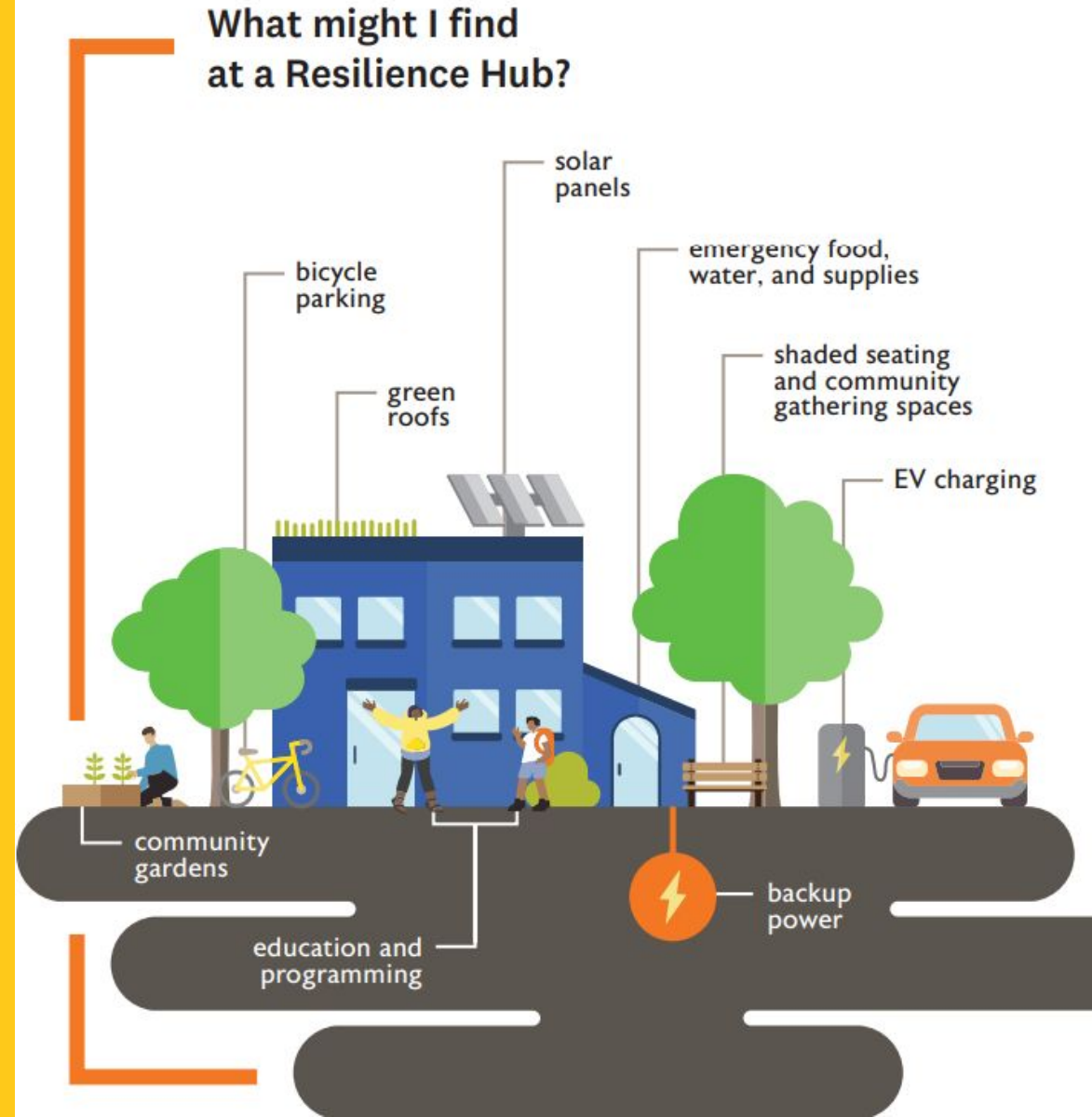
# What are Resilience Hubs?

## What they are:

- ✓ Networks of physical facilities
- ✓ Existing facilities
- ✓ **Community focused, people-focused**

## What they are not:

- ✗ Replacement for traditional emergency planning and disaster response
- ✗ Replacement for sheltering plan
- ✗ Stand alone, fully equipped facilities, open 24/7



# Types of Hubs for the Austin Area



# Trusted Locations are:



**Home & Family**



**Places of Worship**



**Schools**



**Rec Centers &  
Libraries**

# Hubs Selection Process



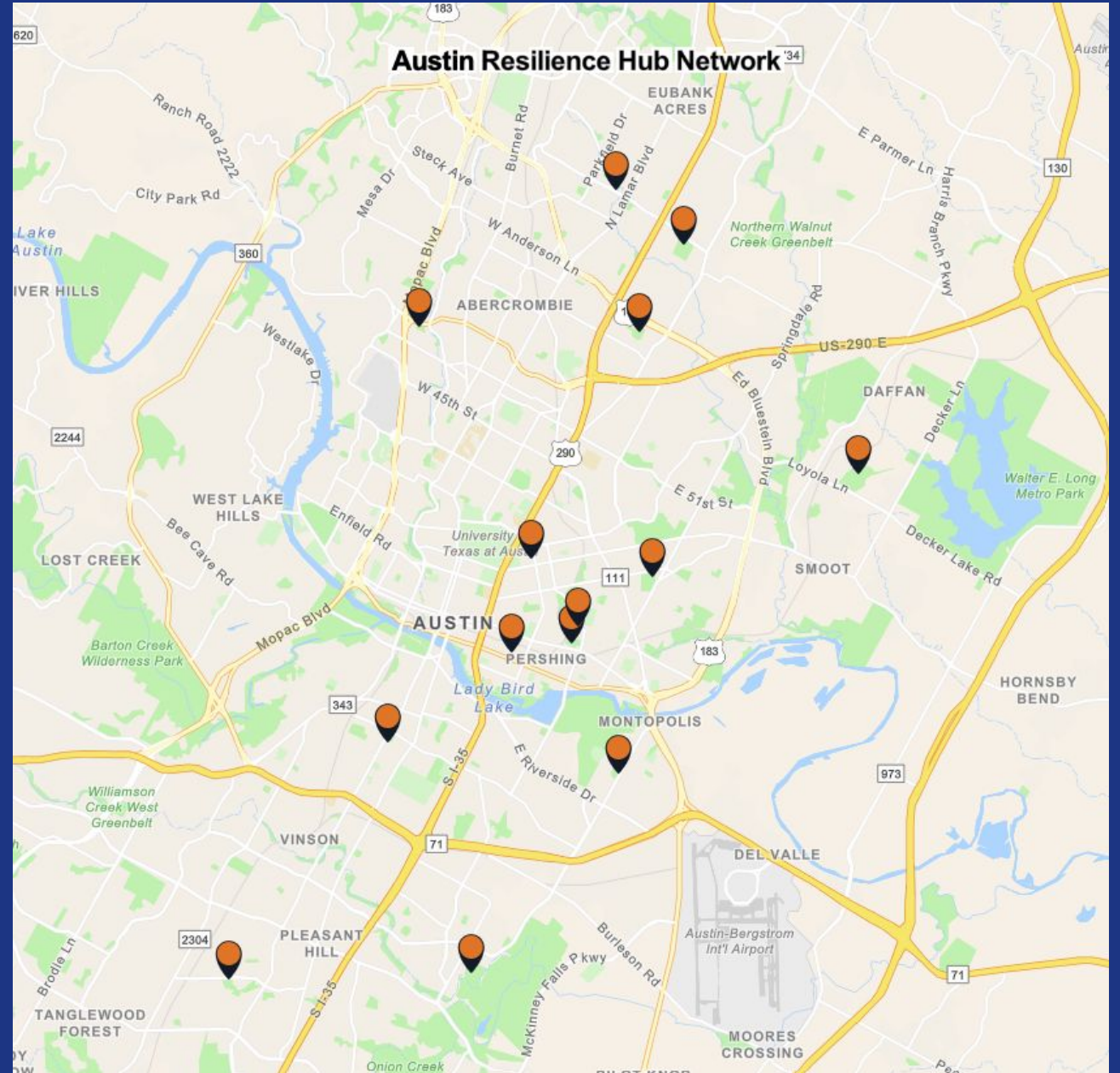
*02*

## **City Facilities Update**



# Austin Resilience Hub Network Map in development

<https://www.arcgis.com/apps/instant/basic/index.html?appid=462fefb029554282a74fc0d2548f5582>



# City Facilities Locations and Supplies

## 14 Facilities

1. **YMCA North Austin**
2. **Gus Garcia Recreation Center**
3. **St. John Health + Virginia Brown Recreation Center**
4. **Turner Roberts Multipurpose Gym Room**
5. **Montopolis Recreation Center + health**
6. **George Morales Dove Springs Recreation Center**
7. **Givens Recreation Center**
8. **Parque Zaragoza Recreation Center**
9. **Dittmar Gymnasium**
10. **Northwest Recreation Center**
11. **Rosewood Zaragosa Neighborhood Center**
12. **South Austin Neighborhood Center**
13. **East Austin Neighborhood Center**
14. **Blackland Neighborhood Center**

**\*initial 6 pilots**

## Supplies

### Health Centers

- 3 pallets of bottled water
- 8,000 Diapers
- 1,500 Canned Protein
- 570 Hygiene Kits
- 3,400 Protein Bars
- 400 Fruit Snacks
- 70 Sleeping Bags
- 200 Backpacks
- 350 Rain Ponchos
- 1,200 Pairs of Mens Socks
- 600 Pairs of Women Socks
- 1152 Pairs of Socks (winter)

### Community Health Workers

- 20 Backpacks,
- 100 Hand Warmers
- 100 Ponchos (disposable)
- 100 Snacks
- 20 Headlamp
- 10 Megaphone
- 100 Ponchos (disposable)
- 100 Shower Wipe
- 20 Disinfecting wipes
- 200 Hand/Body Warmers
- 20 First aid kit
- 200 Socks
- 200 Matches

# City Facilities Backup Power Updates

## Recreation Centers receiving electrical upgrades for backup power:

1. \*George Morales DS Recreation Center (12/6)
2. Turner Roberts Multi-Purpose Room (12/7)
3. \*Gus Garcia Recreation Center (12/13)
4. Northwest Recreation Center (12/18)
5. Montopolis Recreation Center (01/05)
6. Parque Zaragoza Recreation Center (01/05)

**PARD has 5 generators in hand - more to come**

**\*Working with AE to include Community solar/battery backup at Dove Springs & Gus Garcia for redundancy**



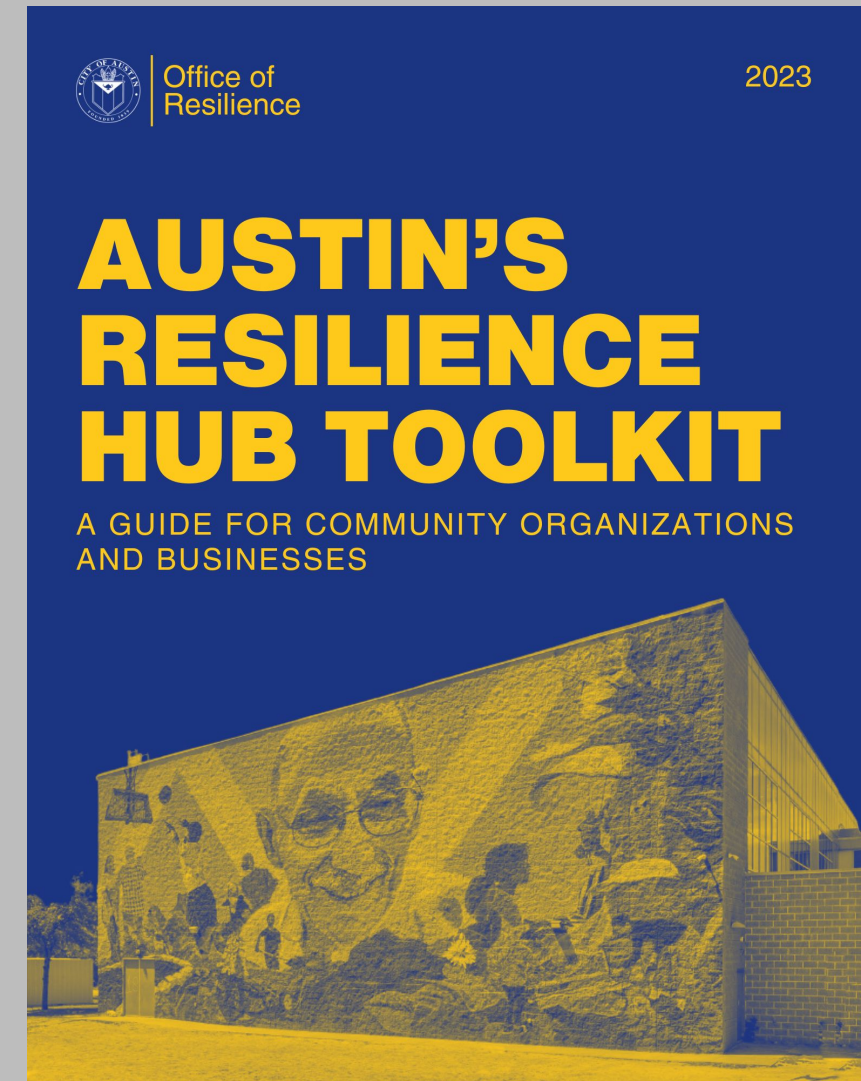
03

## Community Facilities



# Community Hubs - Resilience Hub Toolkit

- A guide for community organizations and businesses to join the Austin Resilience Hub Network
  - Introduction to Resilience Hubs
  - Five Steps for Prospective Hubs
  - Prerequisites for all Sites
    - Information Hubs
    - Warming or Cooling Centers
    - Food / Water Distribution Centers
    - Shelter Capable Facilities
- Access Toolkit [Here](#)





# Community Services at Hubs

## Pilot Mini Grants

- Support local community organizers, small businesses, and organizations that build resilience and serve racially and economically diverse Austinites
- Provide resources for preparedness training, supplies, workforce development opportunities, and more.
- Inform future Resilience Hub Network activities
- 26 mini-grant recipients. \$60,000 in total distribution
- Ice Cream Social to [announce winners](#)
- Cohort required to submit report to shape programming at hubs



*04*

# Community Capacity

# Resources and Training at Hubs

## Training (OoR+HSEM) - Ready Together

- 59 registered
- Hands on, bilingual, community preparedness training
- At a resilience hub
- Pilot curriculum co-created w/ community & depts
- Get to know your neighbor Loteria
- Participants provided resources for their emergency kits
- 4 more in 2024

## Preparedness guide at every Hub

[Link in English](#)

[Spanish translation](#)



# Community Involvement

## 20+ hours of tabling at community events

- Preparedness pop up participation
- Resource fairs
- Community partner preparedness fairs
- Ice cream social
- AISD showcase

## Other data and community engagement opportunities leveraged

- [Resilience CASPER](#)
- Resilience Survey
- A2SI 2023
- Water distribution pilot

## Community Engagement

- Phase II Consultant
- Focus on community organizations and community
- *“Familiar faces in familiar places”*

# Q&A

**Marc Coudert**

[marc.coudert@austintexas.gov](mailto:marc.coudert@austintexas.gov)

**Climate Resilience Program Manager**



# Austin Travis County Food Policy Board

## How do Resilience Hubs fit into the overall Emergency Operations Plan?

Resilience Hub are not a replacement for traditional emergency planning and disaster response

Resilience Hub are not a replacement for sheltering plan

Resilience Hub are not a stand alone, fully equipped facilities, open 24/7

## How do (how will they) Resilience Hubs fit into the Food and Water Access Appendix?

HSEM is hiring a Resilience Hub Manager that will report to a new Mass Care Manager

## How to move from 'Information' Resilience hubs to physical resilience hubs

What are they facilities missing/ what's needed?

## How are Resilience Hubs coordinating with HSEM, Mutual Aid Orgs, and other stakeholders?

HSEM is hiring a Resilience Hub Manager that will report to a new Mass Care Manager

## How can the Food Policy Board support this work?