

# State Bar of Texas Education and Events Center

Historic Landmark Commission

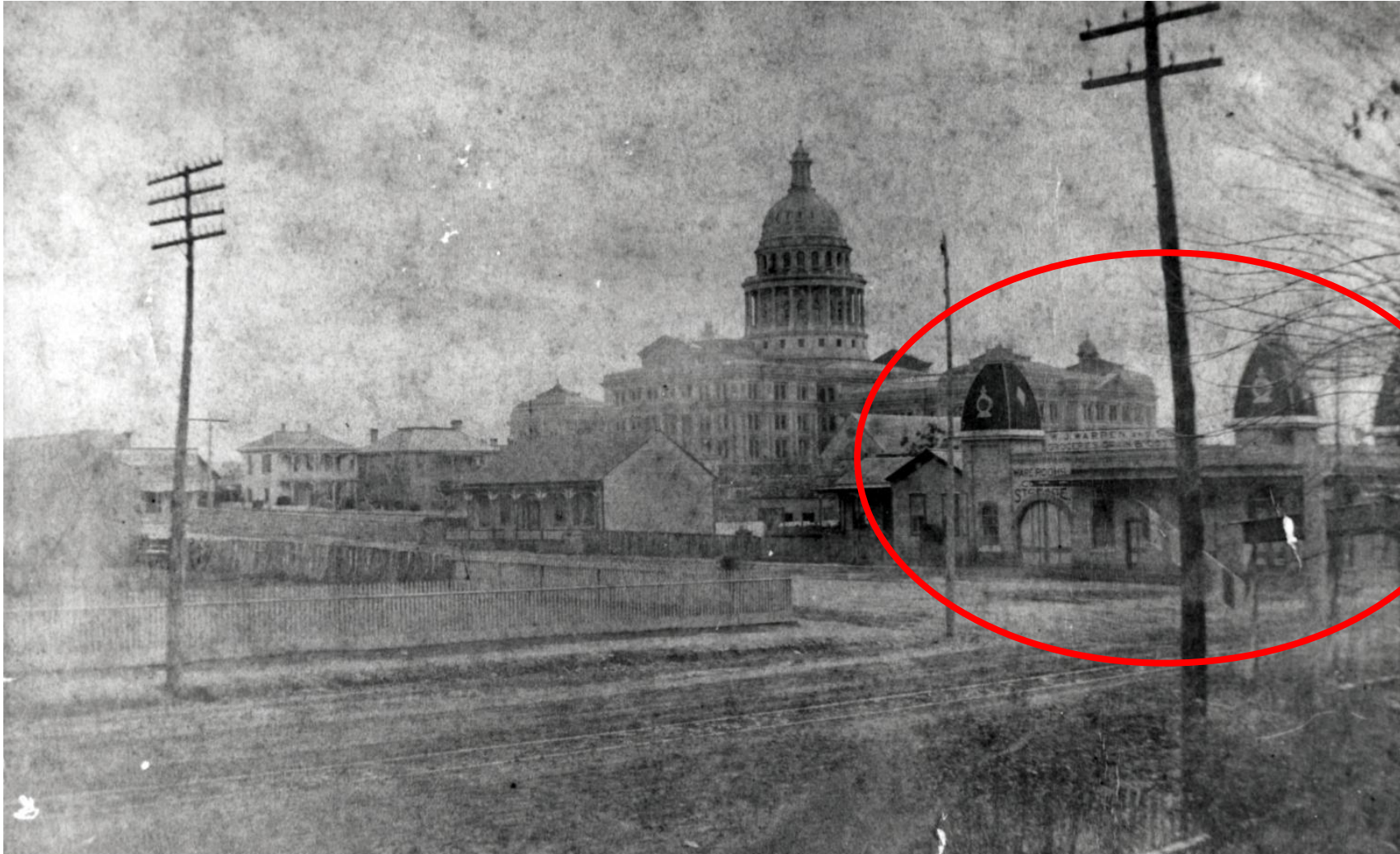
December 13, 2023

Circa 1890's



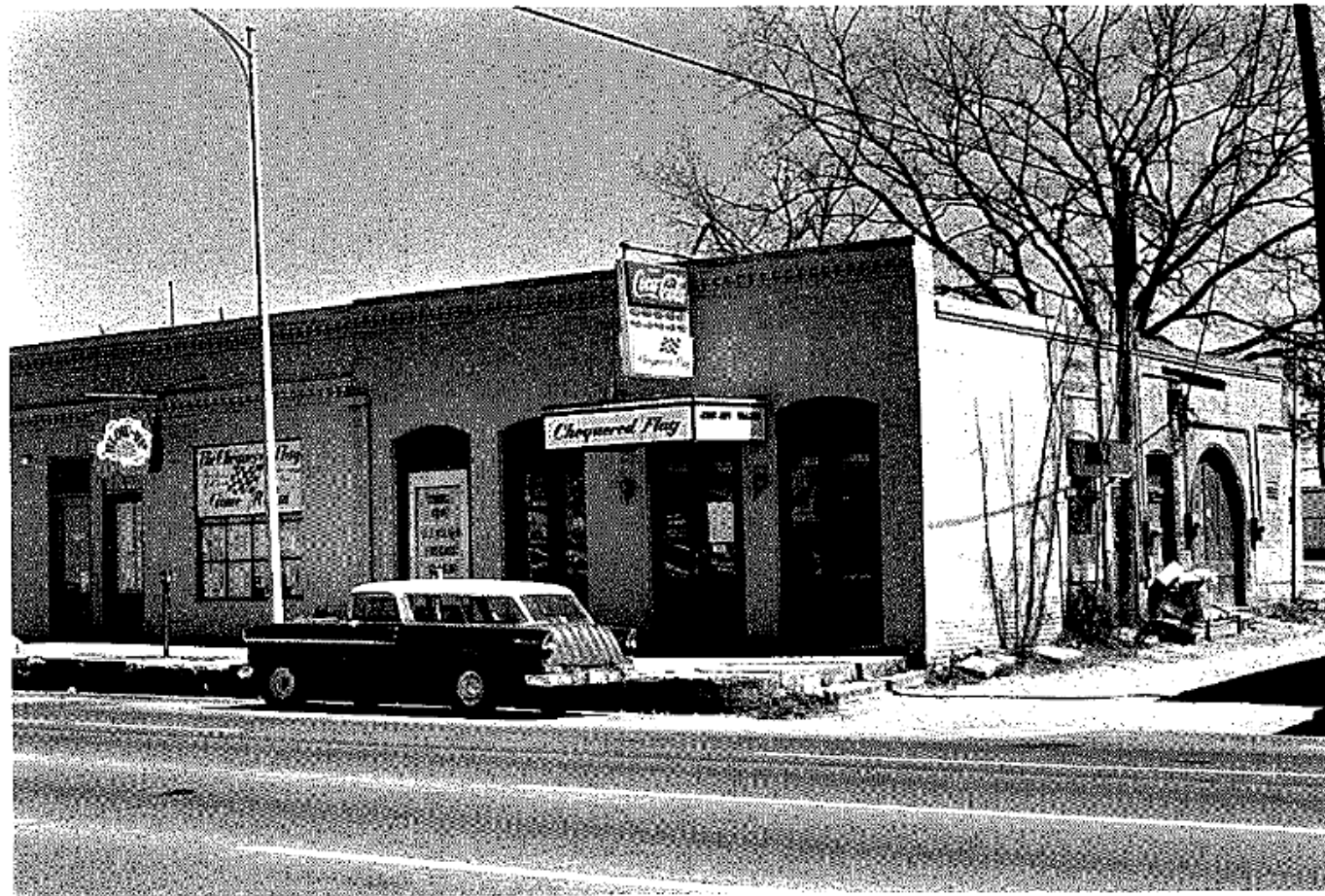
[Item 1], Austin History Center, Austin Public Library, Texas.

1890's – 1920's



[Item 2], Austin History Center, Austin Public Library, Texas.

Circa 1967

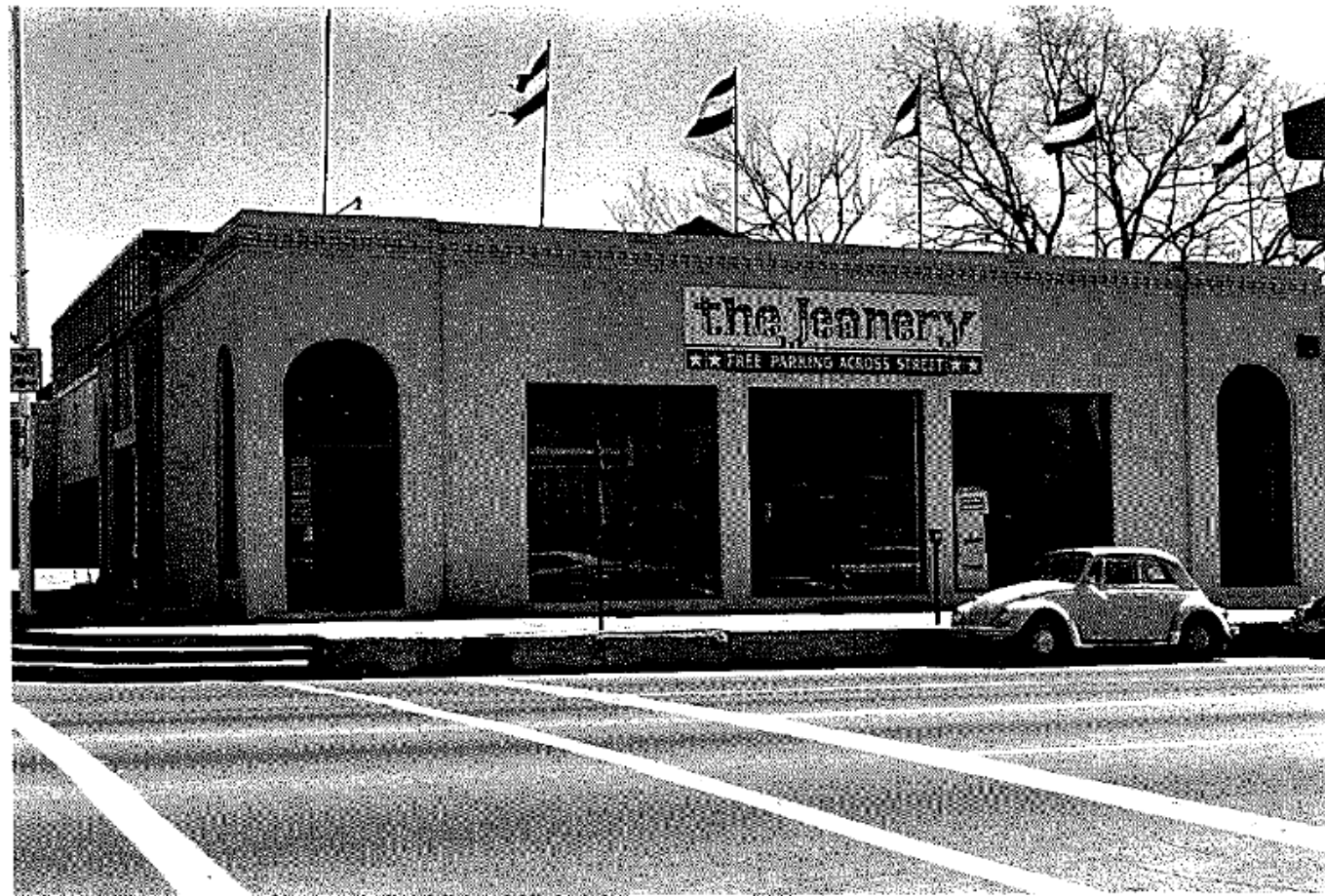


[Item 3], Austin History Center, Austin Public Library, Texas.

Circa 1967



Circa 1970's



[Item 5], Austin History Center, Austin Public Library, Texas.

# September 1995



[Item 6], Austin American-Statesman Photographic Morgue (AR.2014.039). Austin History Center, Austin Public Library, Texas.



[Item 7], Austin American-Statesman Photographic Morgue (AR.2014.039). Austin History Center, Austin Public Library, Texas.

Circa 1997



[Item 8], Heimsath Architects, Austin, Texas.

# Today (2023)



[Item 9], Lawrence Group Architects, Austin, Texas.

# Comparison



1890's



2023

# Analysis of Level of Significance

## West (Lavaca Street)

Façade Note: Entire façade was originally unpainted brick; later remodels introduced stucco; 1997 renovation removed stucco, resulting in damage to original brick, and repairs were undertaken; today, brick is painted on exposed surfaces

1997 – Fiberglass recreations of turrets; masonry towers rebuilt after having previously been removed

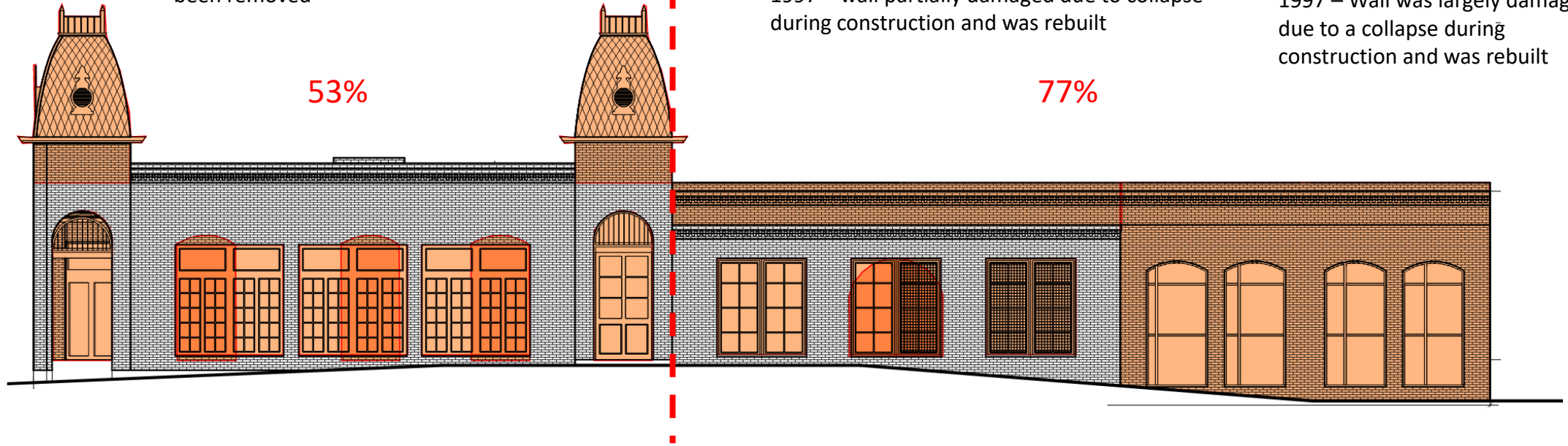
1920 - 1950 – Top part of wall was added to mimic adjacent building language

1997 – wall partially damaged due to collapse during construction and was rebuilt

1997 – Wall was largely damaged due to a collapse during construction and was rebuilt

53%

77%



1997 – Corner opening was originally at R.O.W.; porch and setback were added later

1997 – Openings have been modified multiple times; where glazing existing, windows are not historic

1997 – Windows and transoms are not historic and were rebuilt

1997 – Openings have been modified multiple times; where glazing existing, windows are not historic; original arched opening long ago infilled

# Analysis of Level of Significance

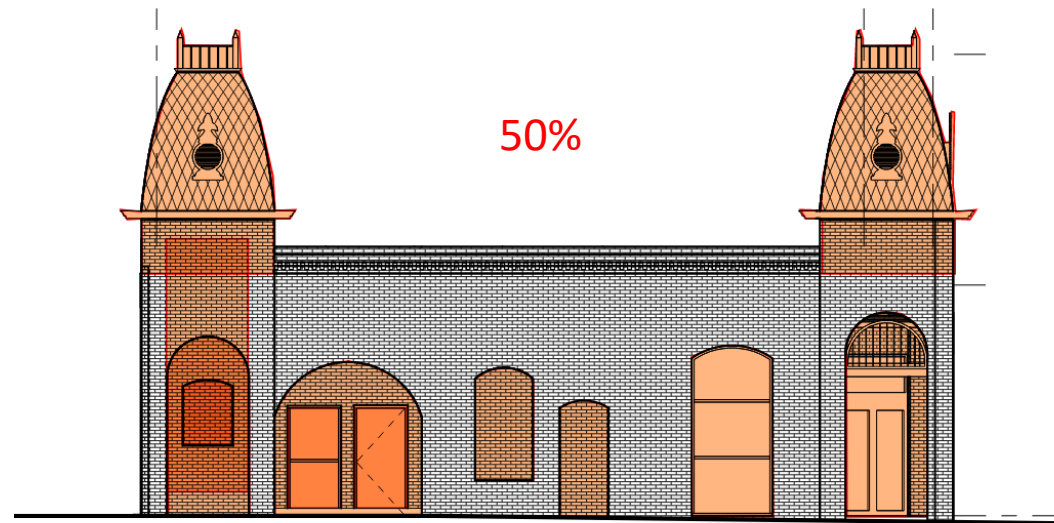
North (15th Street)

Façade Note: Entire façade was originally unpainted brick; later remodels introduced stucco; 1997 renovation removed stucco, resulting in damage to original brick, and repairs were undertaken; today, brick is painted on exposed surfaces

1997 – Original building relief was infilled; later windows were infilled and a fake arched opening that never existed was added during 1997 renovation

1950's – Original arched opening was flattened and infilled; window and door were added during 1997 renovation

1997 – Original openings were bricked up during 1997 renovation



1997 – Fiberglass recreations of turrets; masonry towers rebuilt after having previously been removed

1997 – Windows and transoms are not historic and were rebuilt

1997 – Corner opening was originally at R.O.W.; porch and setback were added later

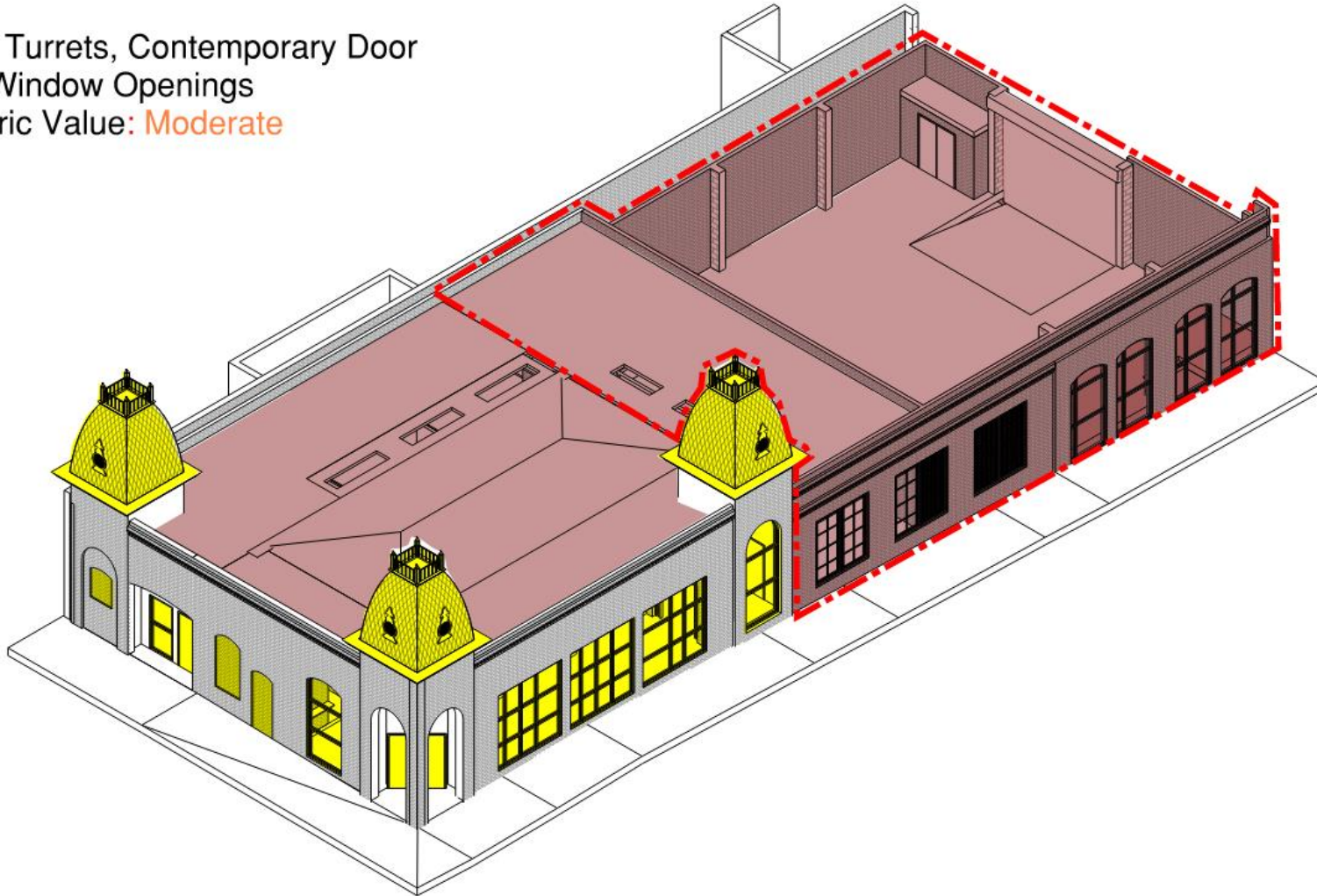
Original opening was stucco'd over during 1970's; opening was revealed and new window added in 1997

# HISTORIC PRESERVATION ANALYSIS

## *1990's Additions and Recreations*

Item: Exterior Masonry Walls, Concrete Slabs, TPO Roof System, Contemporary Door and Window Openings  
Historic Value: **Low**

Item: Turrets, Contemporary Door and Window Openings  
Historic Value: **Moderate**





STATE BAR of  
TEXAS

This page has been intentionally left blank.

# Alternate Building Mass

\* This alternate mass is not preferred by the Owner as it results in a reduction in program of more than 600 SF \*

