

# Concourse B and Connector

Airport Advisory Commission, January 2024

Lyn Estabrook – Deputy Chief Development Officer



**JOURNEY  
WITHAUS**

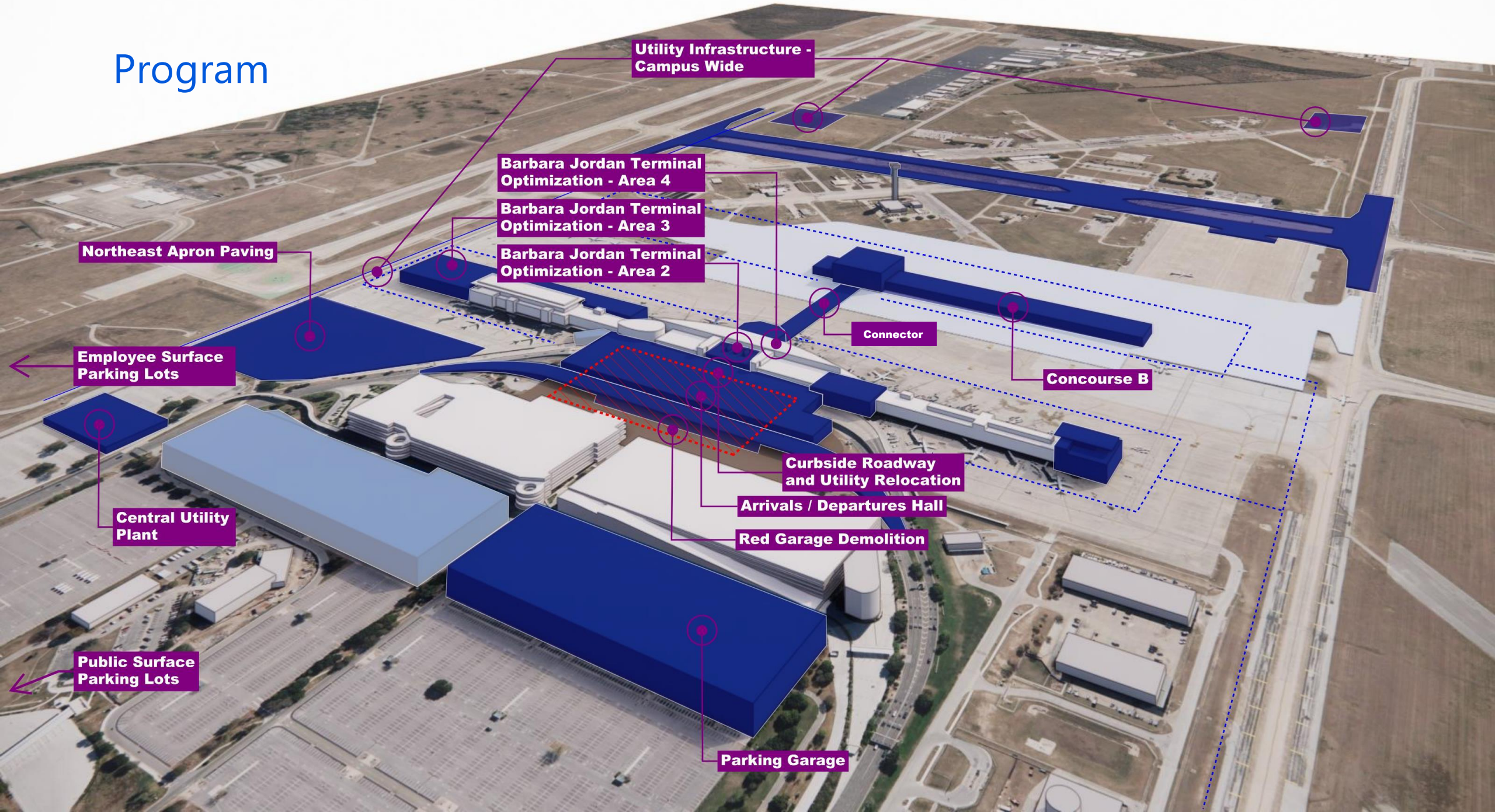
# JOURNEY WITH AUS

Airport Expansion & Development Program





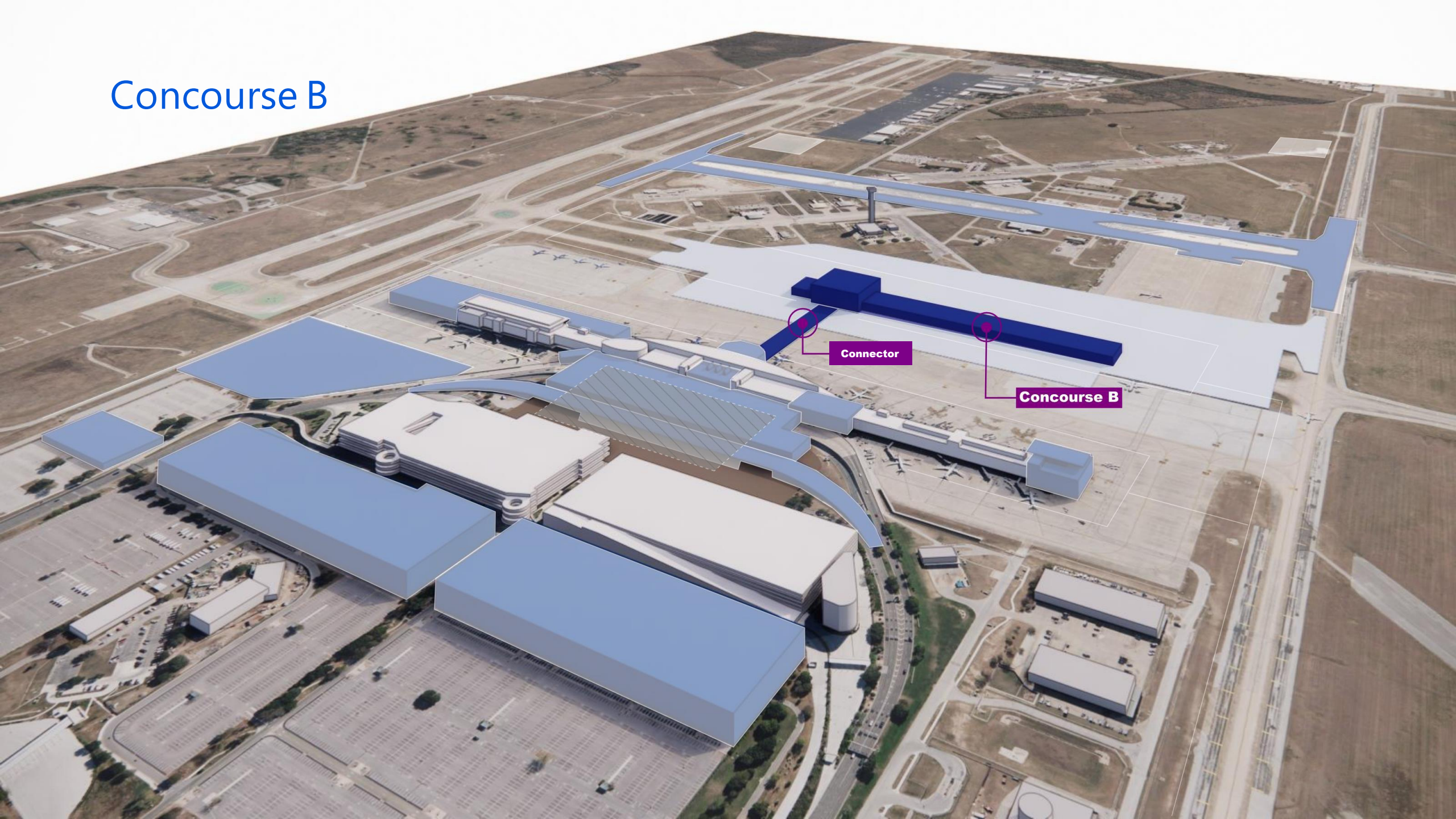
# Program



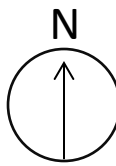
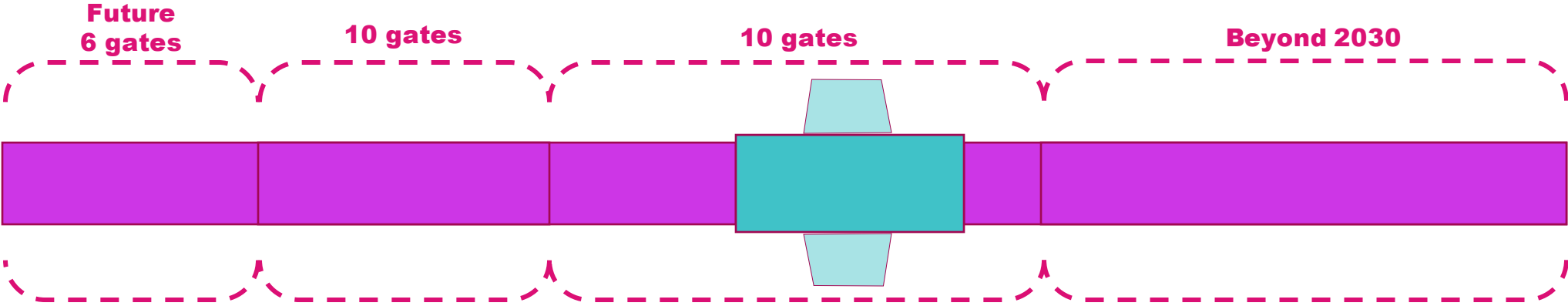




# Concourse B

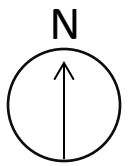
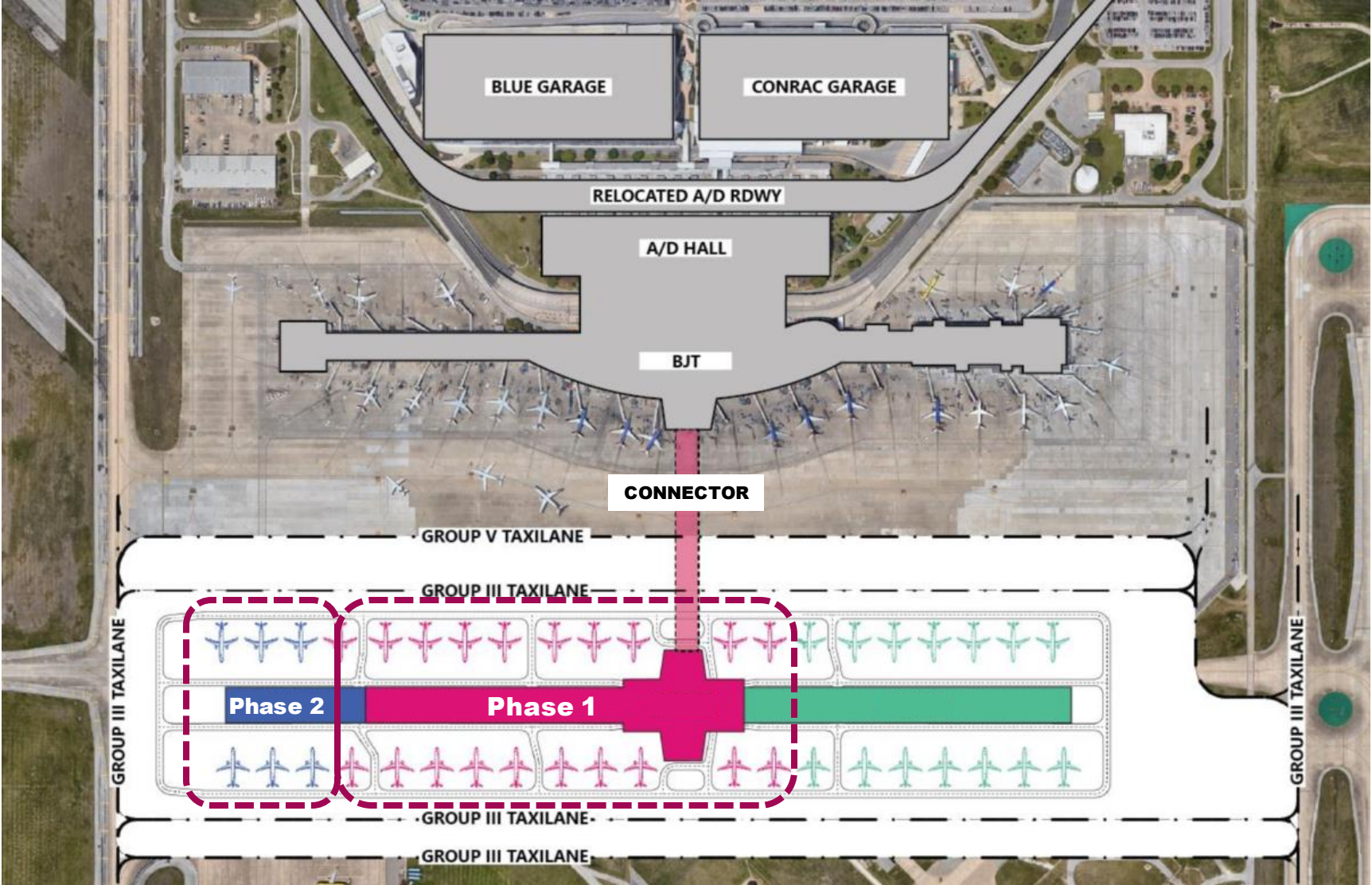


# Concourse B – Potential Phasing Options

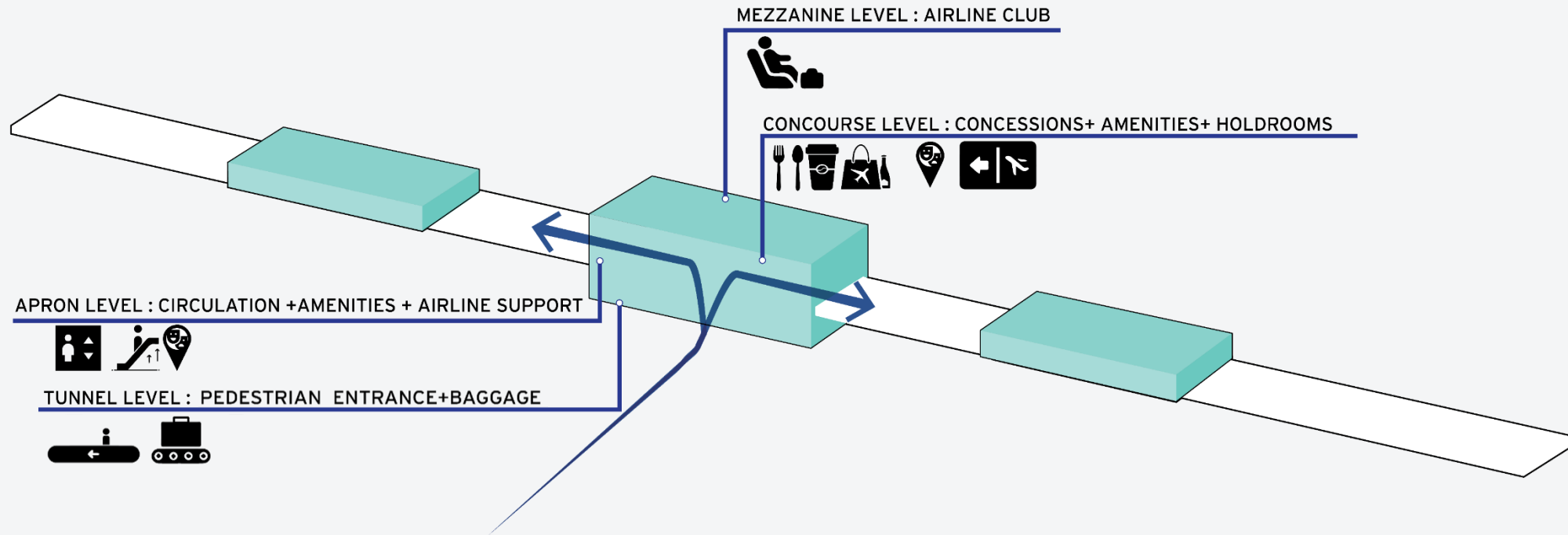




# Concourse B



# Concourse B



CREATE A **HIERARCHY** OF SPACE,  
WHILE STAYING **INNOVATIVE**

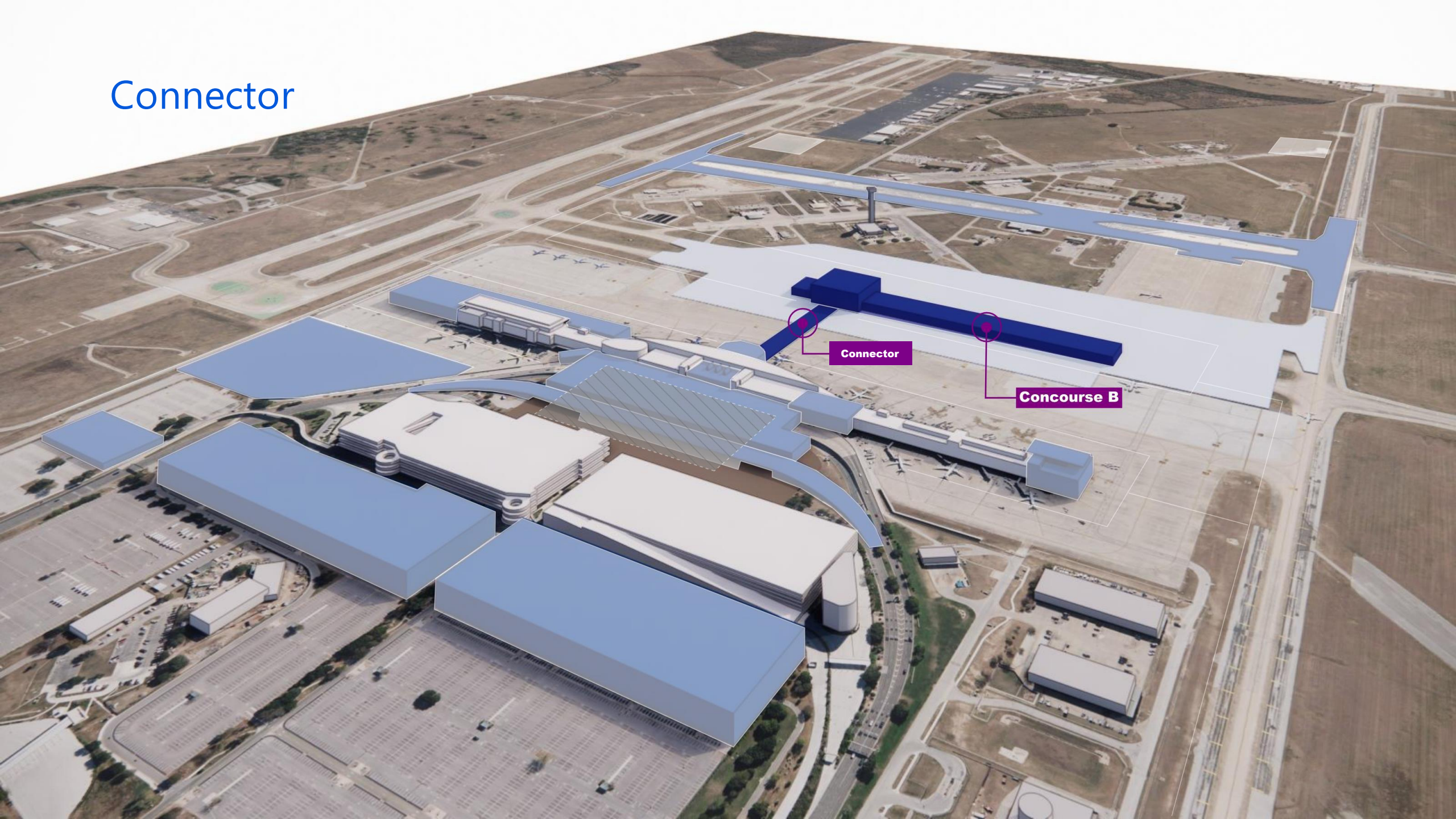
## Landmark & Orientation

The main node serves as **the identity of Concourse B**, weaving passenger flows **establishing pathways** and **hubs of activity** anchored by **bespoke landmarks** creating **the cadence for a memorable place**.



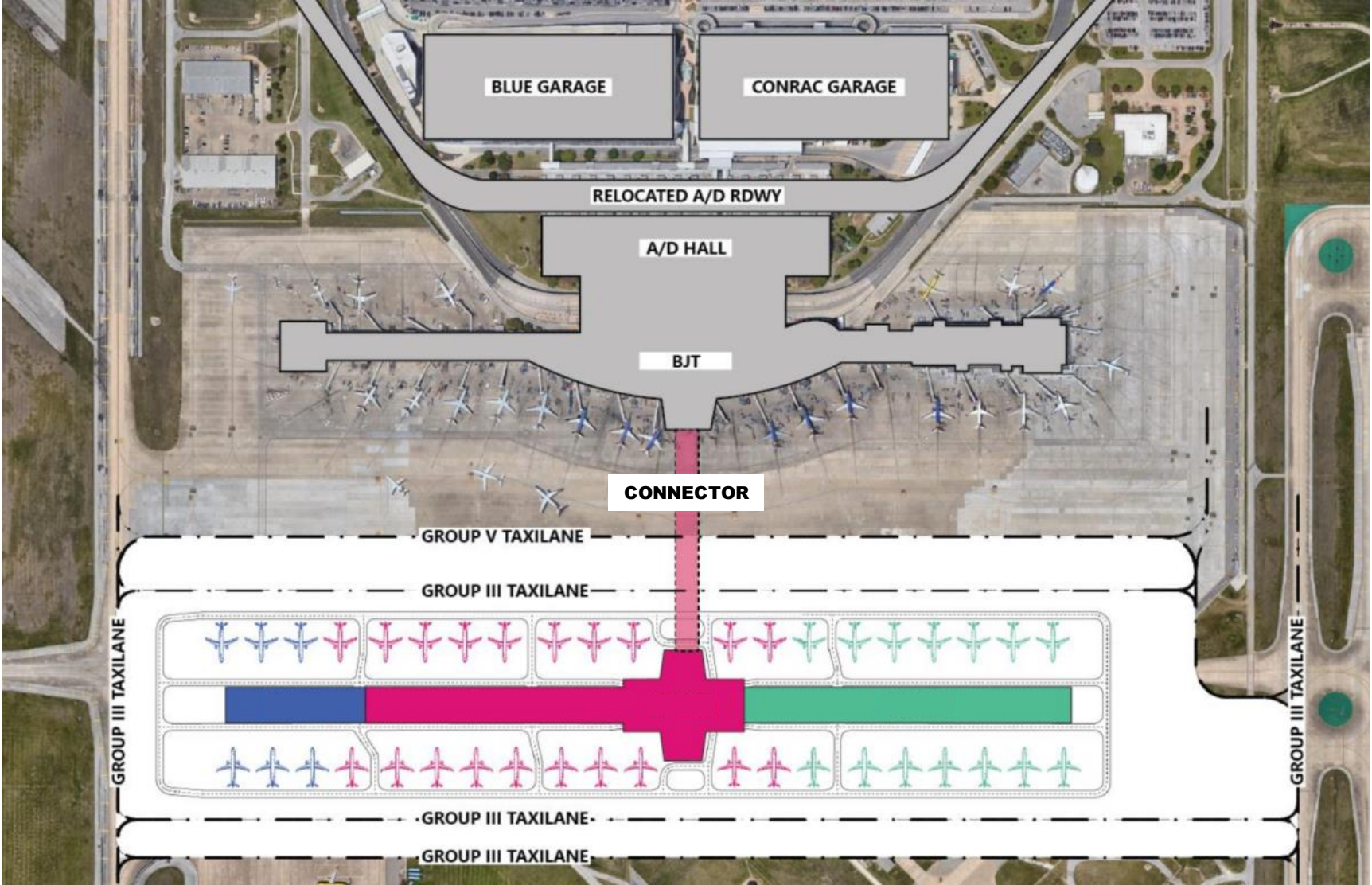


# Connector

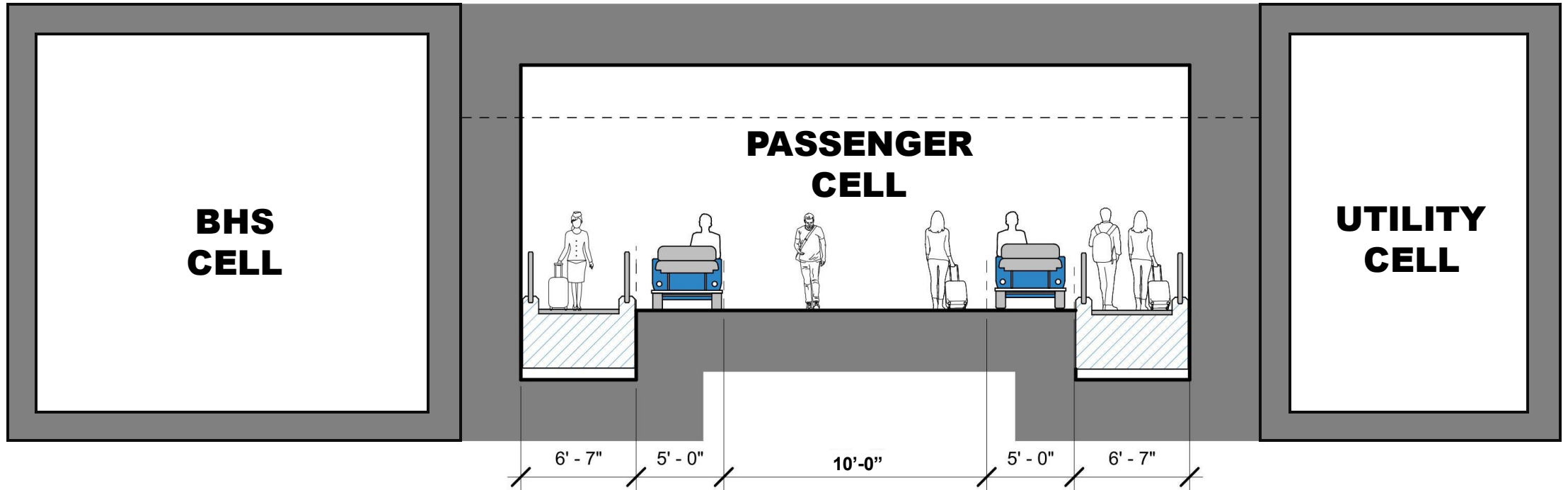




# Connector



## Potential Connector Cells

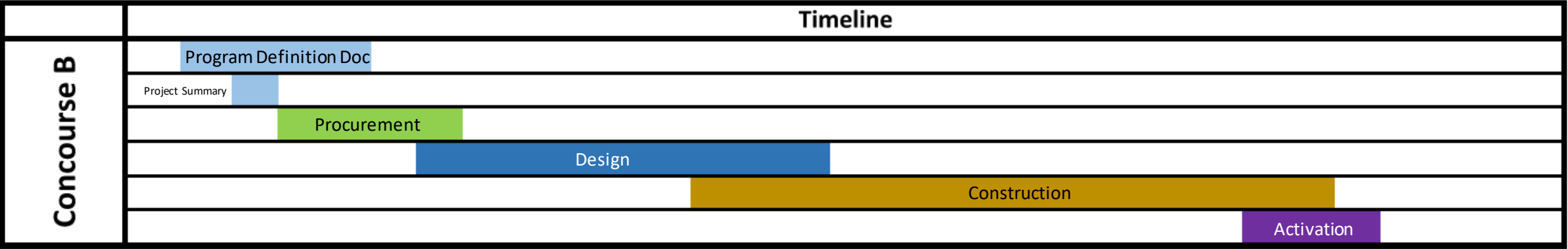




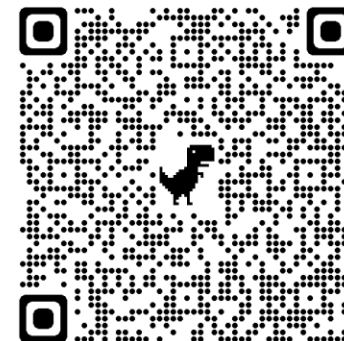
## Passenger Walkway Cell



# Concourse B Phasing







Cambridge University Press  
The Edinburgh Building, Shaftesbury Road,  
Cambridge CB2 8RU, UK

