



# TRANSPORTATION PUBLIC WORKS

## Mobility Services Organizational Structure

Jim Dale, Deputy Director  
Transportation and Public Works

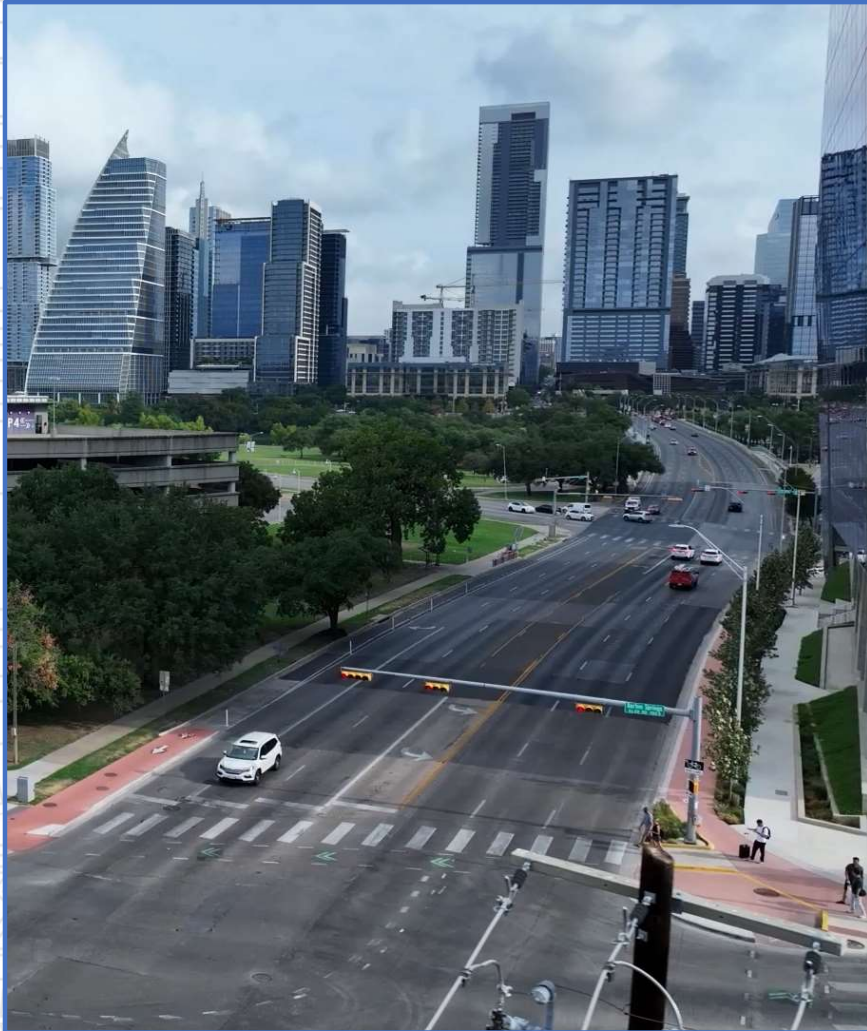
February 6, 2024

Mobility Services Organizational Structure

1



TRANSPORTATION  
PUBLIC WORKS



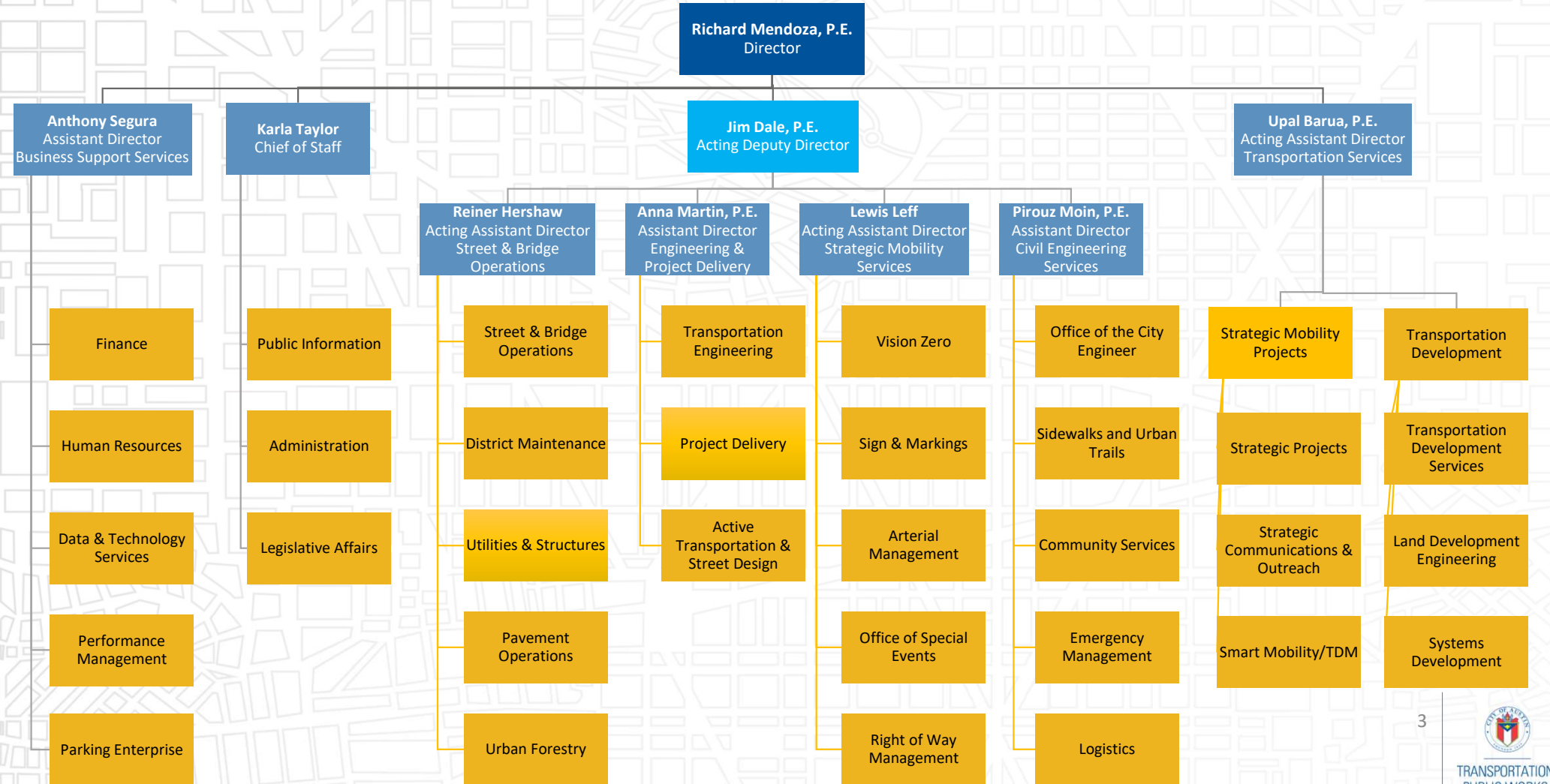
## DEPARTMENT OVERVIEW

**Mission:** We are a highly reliable organization that builds and maintains mobility infrastructure for our community.

**Vision:** Austin is the model for safe, reliable, and sustainable transportation.

Recent bond programs, from 2016, 2018 and 2020, are funding a wide range of projects across the city.

## Transportation Public Works Organizational Structure





# PWD/ATD DEPARTMENTS MERGER

With the recent merger of the Public Works Street and Bridge Operations Divisions with the Transportation Department, roads are now designed, paved, striped, signed and signalized as one department by the newly formed Transportation and Public Works Department (TPW).

In short, the reorganization improves effectiveness and responsiveness.



# FIELD OPERATIONS

The following divisions oversee field operations within the Transportation and Public Works Department:

## **Engineering & Project Delivery**

Develops collaborative solutions to multimodal transportation challenges and is responsible for implementing safety and mobility improvements through several programs.

## **Strategic Mobility Services**

Installs new and maintains existing signs marking assets, ensures signals are operating correctly and designs and implements safety improvements to reach Austin's Vision Zero goal.

## **Civil Engineering Services**

Evaluates , maintains and repairs the City's bridges, right-of-way and street infrastructure systems. Also oversee the Community Services division and manages the maintenance of the City's sidewalk and urban trails network.

## **Street & Bridge Operations**

Consists of five divisions that are responsible for the management and maintenance of Austin's right-of-way infrastructure.

# ENGINEERING & PROJECT DELIVERY

## Transportation Engineering

Reviews and approves transportation operations, safety and mobility improvements in the transportation network with the Area engineers and support staff. Responds to citizen 311 calls about infrastructure.

## Active Transportation & Street Design

Responsible for multimodal street design projects, with a focus on improving the safety and comfort for people walking, bicycling, riding scooters and other personal mobility devices.



## Capital Services/Project Delivery

Manages the design and construction of local mobility and safety projects such as bikeways, Vision Zero and transit enhancement. Engages with the community on construction impacts.



# STRATEGIC MOBILITY SERVICES

## Arterial Management / Signals

Manages 1,100 signals and pedestrian hybrid beacons and over 575 school zone beacons to ensure safety for all modes of travel on Austin's arterial roadways.

## Signs and Markings

Installs and maintains 120,000 traffic signs and 900 miles of long line markings to guide, warn and regulate vehicular, cyclist and pedestrian traffic.

## Vision Zero

Goal to eliminate the City's transportation-related serious injuries and fatalities, primarily through street design changes at intersections and high-crash corridors.



# STRATEGIC MOBILITY SERVICES

## Office of Special Events

Manages special events across the city, issuing more than 300 special event permits within the right of way. Events range from small neighborhood block parties to large events, i.e. ACL, SXSW.

## Right of Way (ROW) Management

Manages many of the day-to-day activities in the right of way given time, more than 3,500 permits may be active. ROW is the public-owned land, including streets, sidewalks and the area behind the curb. through handling 30,000 permit requests annually. At any





# CIVIL ENGINEERING SERVICES



## Office of the City Engineer

Provides innovative, reliable and sustainable approach to the evaluation, maintenance and repair of the City's bridge, right of way and street infrastructure systems.

## Sidewalks and Special Projects

Responsible for maintaining and improving sidewalk and shared street infrastructure, improving pedestrian safety and enabling people to walk to transit stops and wherever they need to go.

## Community Services

Houses several programs including Safe Routes to Schools and the Neighborhood Partnering Program.

## Logistics

Manages TPW's fleet from acquisition through retirement.

## Emergency Management

Newly created team to coordinate with HSEM and other departments.

# STREET & BRIDGE OPERATIONS

## District Maintenance

Maintains the public right of way: maintenance of alleys and urban trails, along with Austin 311 and emergency responses.

## Pavement Operations

Provides annual maintenance of streets through seal coat, crack seal, fog seal and overlay services. This includes public notification and street sweeping.

## Urban Forestry

Coordinates the maintenance of public trees and vegetation in the right-of-way.

## Street and Bridge Operations

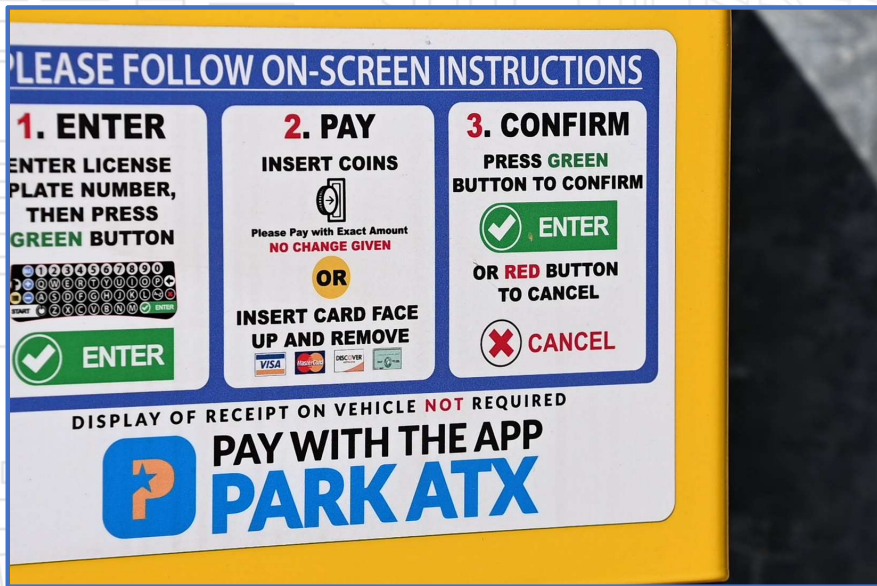
Maintains the public right of way infrastructure including streets, bridges, sidewalks, guardrails and vegetation.

## Utilities and Structures

Installs and maintains concrete-related infrastructure including sidewalks, curb and gutter, retaining walls, ADA ramps, driveways, bridges, culverts and special projects, including new concrete construction projects.



# PARKING ENTERPRISE



## Mobility Services

Authorizes ride-for-hire services, pedicab and chauffeur licenses, residential parking permits and evaluates new mobility options that are interested in servicing Austin.

## Parking and Enforcement Services

Installs and maintains existing on-street metered parking systems, as well as promotes programs and partnerships that reduce economic barriers for low-income employees.

## Mobility Demand Management

Authorizes various uses of curb space to include shared-use transportation options and curb access, including creating and managing commercial loading zones and identifying areas where vehicle turnover is vital for access to local businesses.

11



# TRANSPORTATION SERVICES



## Transportation Development Services

Provides review services to developers/applicants and their consultants on all aspects of transportation associated with a proposed development or redevelopment.

## Land Management Engineering

Assists the public with obtaining rights for the use of City right-of-way and easements (streets, sidewalks, alleys, public utilities) through a variety of means depending on the project.

## Systems Development

Oversees long-term transportation planning for the City of Austin, as well as coordinating long-term planning efforts with other jurisdictions and agencies.

## MOBILITY BOND PROGRAMS AND INITIATIVES INCLUDE:

- Bikeways, TPW
- Corridor Mobility Program, CDS
- Major Capital Improvements, CDS
- Neighborhood Partnering Program, TPW
- Regional Mobility Program, TxDOT
- Safe Routes to School, TPW
- Sidewalks and Urban Trails, TPW
- Signals and Technology, TPW
- Street Reconstruction, CDS
- Substandard Streets and Capital Renewal, CDS
- Transit Enhancement, TPW
- Transportation Safety, TPW

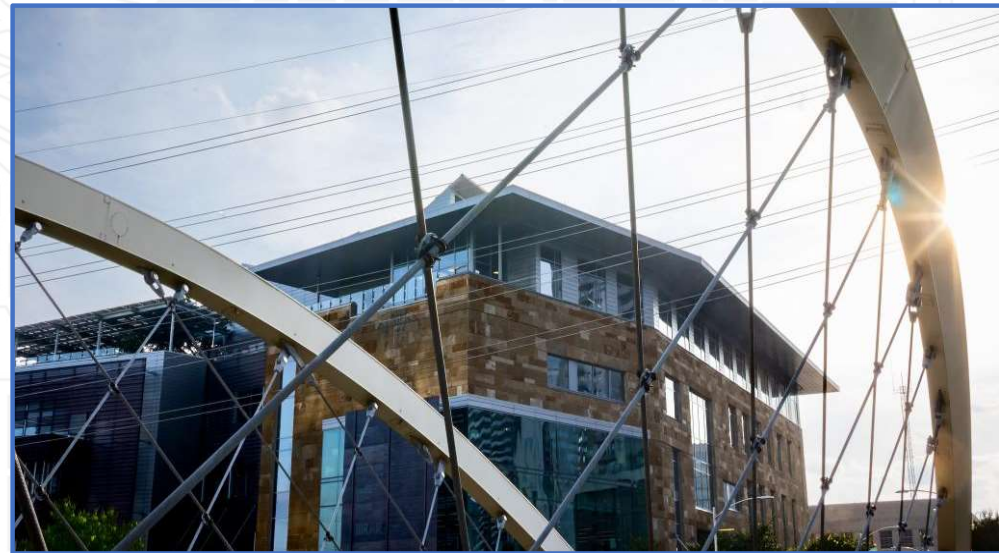
All projects are built on the principles of [Vision Zero](#): Designing safer streets for everyone.

# CAPITAL DELIVERY SERVICES

Capital Delivery Services (CDS) builds public projects to support the community.

Capital improvement projects provide essential services to Austin communities and include:

- **Water and wastewater infrastructure** – Wastewater collection, treatment plants, and drinking water distribution
- **Stormwater infrastructure** – Storm drains, dams, water quality ponds and other assets that control flooding and improve stormwater quality
- **Public facilities** – Fire/EMS stations, recreation centers, cultural facilities, museums and libraries
- **Mobility infrastructure** – Airports, roads, bridges, urban trails, bikeways and sidewalks



- **Park amenities** - Aquatics, courts, fields, nature trails and playscapes



# CAPITAL DELIVERY SERVICES

## Current Project Portfolio

Directly manage over **500** active projects representing an investment of **\$7 Billion.**

CDS supports delivery of:

- \$5 Billion Project Connect
- \$4 Billion airport expansion
- \$2 Billion convention center expansion



# COLLABORATION BETWEEN TPW and CDS

- TPW identifies and prioritizes community mobility needs.
- Together, TPW and CDS develop the preliminary scope, schedule and budget and jointly work to secure funding.
- CDS takes the defined project through all phases of design, bid, construction and delivers the finished project.
- Once delivered, TPW maintains the mobility infrastructure.





# TRANSPORTATION PUBLIC WORKS

## **Mobility Services Organizational Structure**

