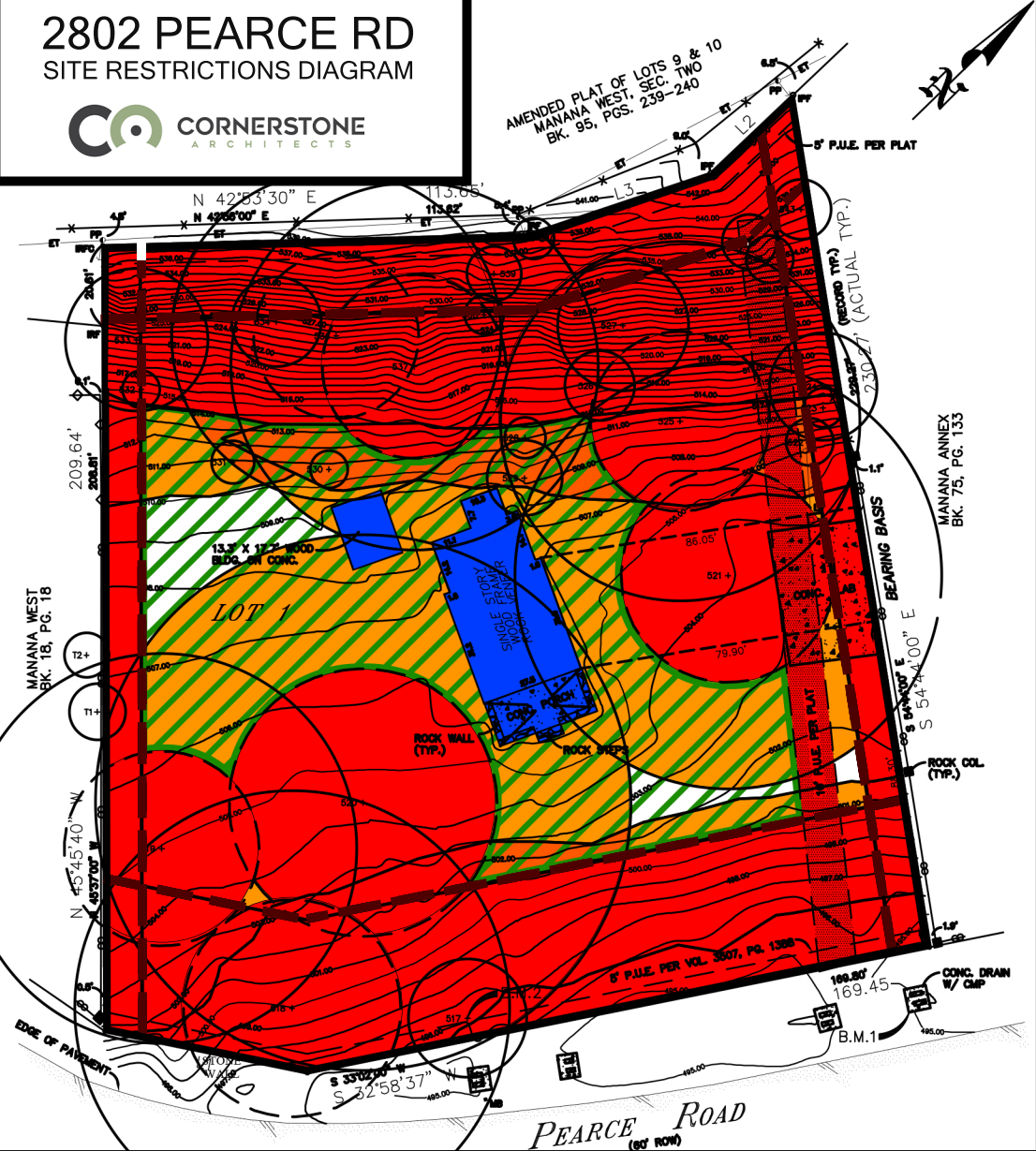


# 2802 PEARCE RD

## SITE RESTRICTIONS DIAGRAM



<p><b>NO DEVELOPMENT PER:</b></p> <ul style="list-style-type: none"> <li>- SETBACKS <ul style="list-style-type: none"> <li>FRONT: 40'</li> <li>SIDE: 10'</li> <li>REAR: 20'</li> </ul> </li> <li>- LAKE AUSTIN ZONING (GREATER THAN 35% SLOPE)</li> <li>- TREE PROTECTION (1/2 CRZ OF PROTECTED &amp; HERITAGE TREES)</li> </ul>	<p><b>LIMITED DEVELOPMENT PER:</b></p> <ul style="list-style-type: none"> <li>- LAKE AUSTIN ZONING (15-25% SLOPE)</li> <li>- TREE PROTECTION (FULL CRZ OF PROTECTED &amp; HERITAGE TREES)</li> </ul> <p><b>EXISTING STRUCTURES</b></p> <ul style="list-style-type: none"> <li>- SEE ATS ENGINEERING OBSERVATION REPORT</li> <li>- SEE PHOTOS</li> </ul>	<p><b>DEVELOPMENT AREA:</b></p> <ul style="list-style-type: none"> <li>- MAX 50% IMPACT TO ANY PROTECTED OR HERITAGE TREE</li> <li>- ADA ACCESSIBILITY REQUIRED FOR OWNER</li> </ul> <p>(SEE FULL SURVEY BY SNS ENGINEERING FOR SURVEY LEGEND)</p> <h3>LEGEND</h3>
--	---	--