

# Austin Energy FY2024 Q1 Operations Update

Lisa Martin

Deputy General Manager & Chief Operating Officer



February 2024

© Austin Energy

# Agenda

## Quarterly Operations Update



Executive Summary



Environmental Performance



Reliability Performance



Grid Resilience Strategic Goal

# Executive Summary



## Renewable production on-target

For the quarter, 40% aggregate renewable production as a percentage of load



## Carbon-free production on-target

- For the quarter, 70% carbon-free generation as a percentage of load
- On a rolling 12-month basis, 71% carbon-free generation as a percentage of load



## Generators availability is stable

Resources at FPP and STP demonstrated 100% availability; SHEC had a planned outage for scheduled maintenance



## Reliability performance trend is stabilizing

Performance metrics continue to show slightly better outage duration and frequency compared to previous quarters

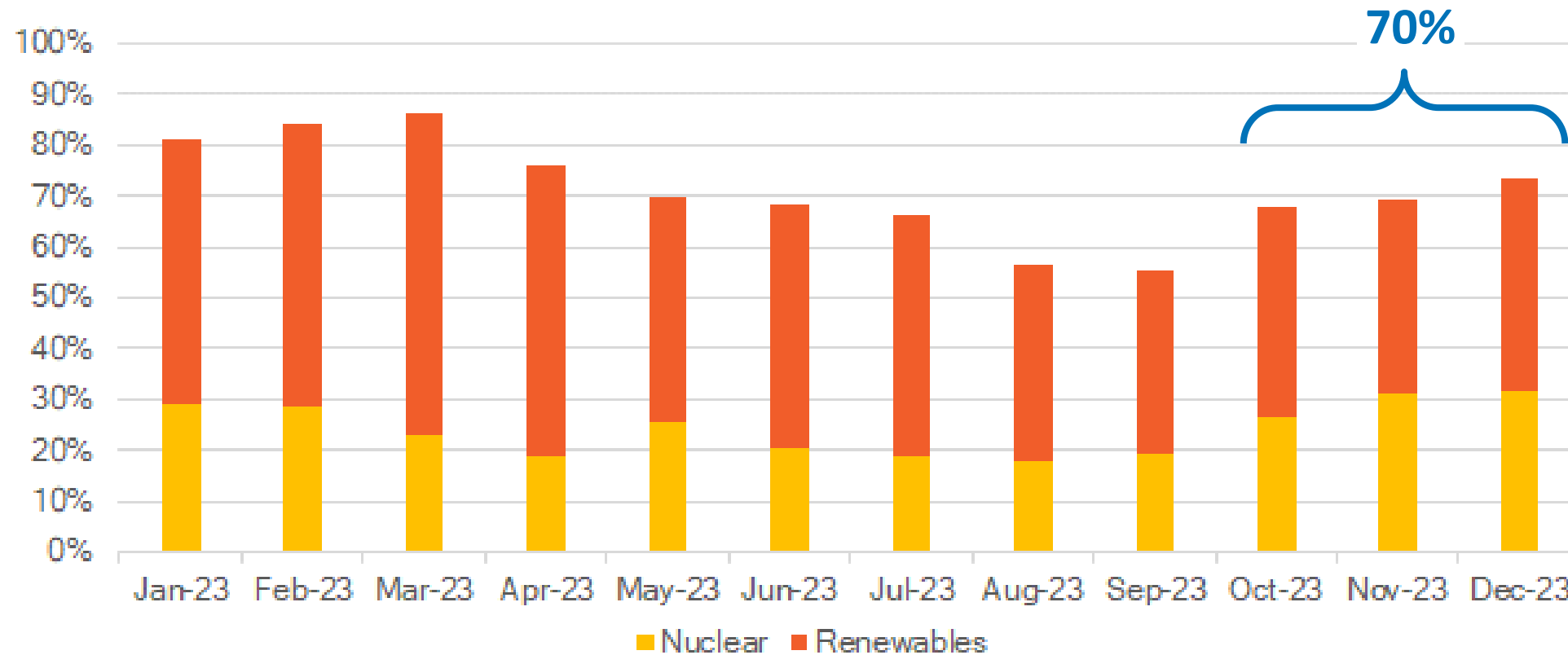
# Austin Energy Operations Update

## Environmental Performance



# Carbon-Free Generation as a Percentage of Load

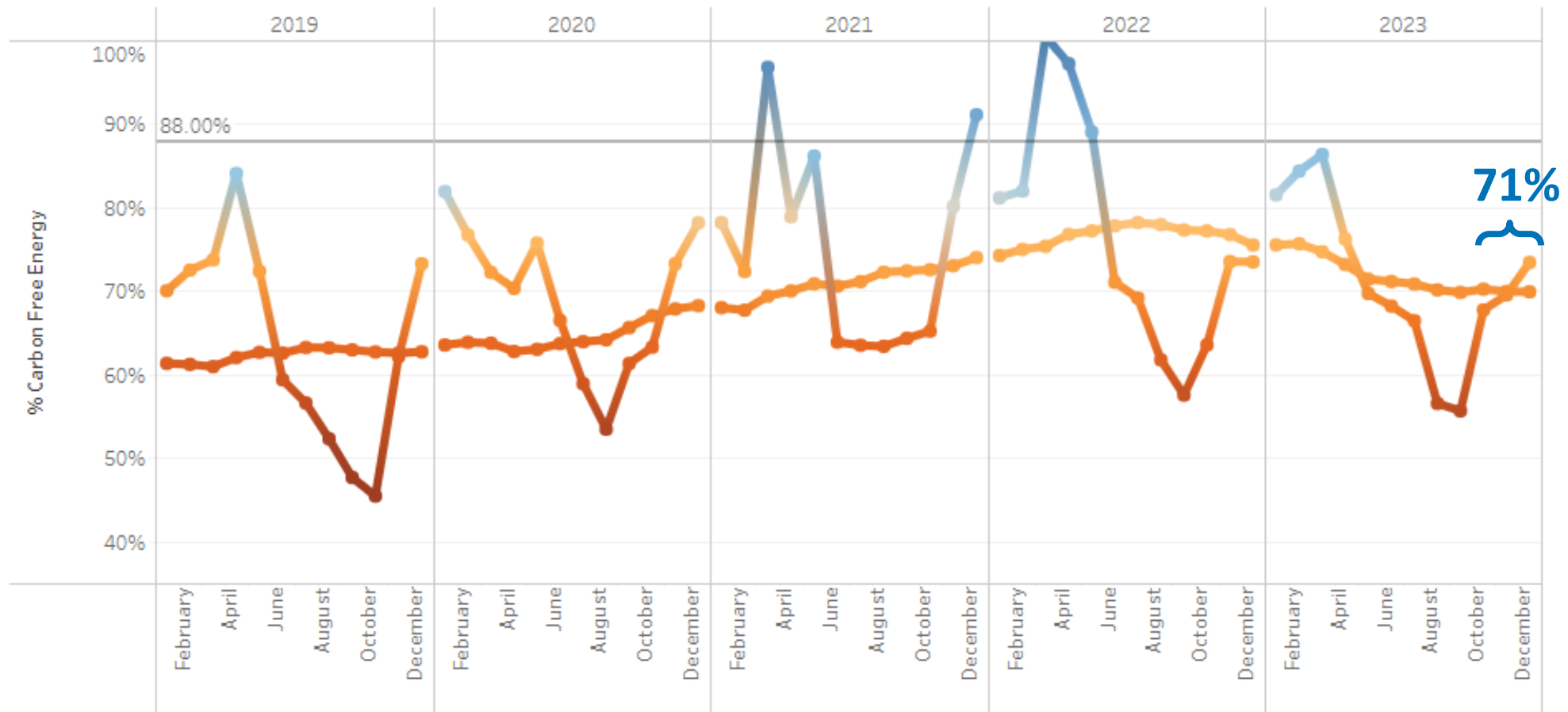
## Monthly Data



# Carbon-Free Generation as a Percentage of Load

## Rolling 12-Month Average Data

Carbon Free Energy (As a Percent of Load)



# Austin Energy Operations Update

## Reliability Performance



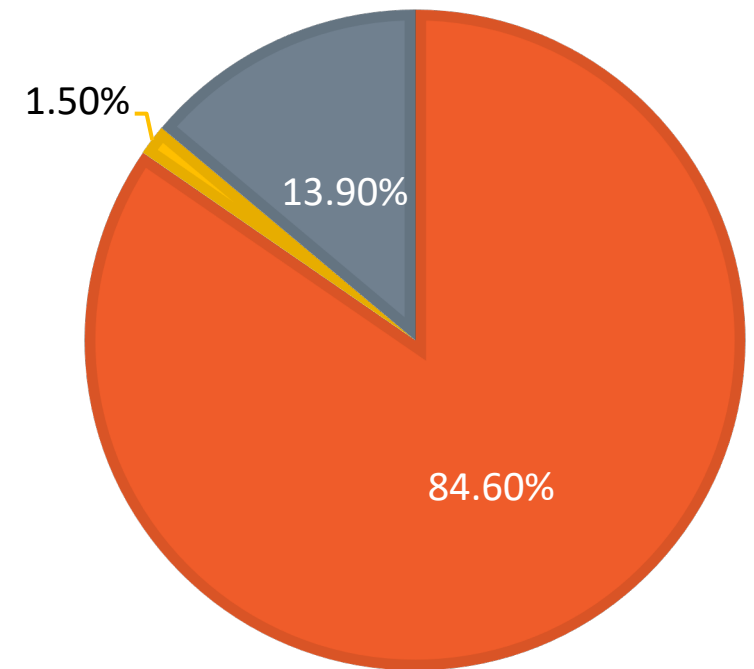
# Electric Vehicle Charging Station Operations

## EV Charging Operations Updates

- Austin Energy actively engaged *ChargePoint* and *Smart Charge America* to perform reactive and preventative maintenance
- Implementing an updated rate of \$0.09/kWh
- Phasing out the former subscription plan



Network Health  
as of 2/7/24



Available Faulted Unreachable

*Faulted: WiFi or cellular issue detected at the time of report*

*Unreachable: WiFi or cellular issue detected with the station within the last 24 hours*



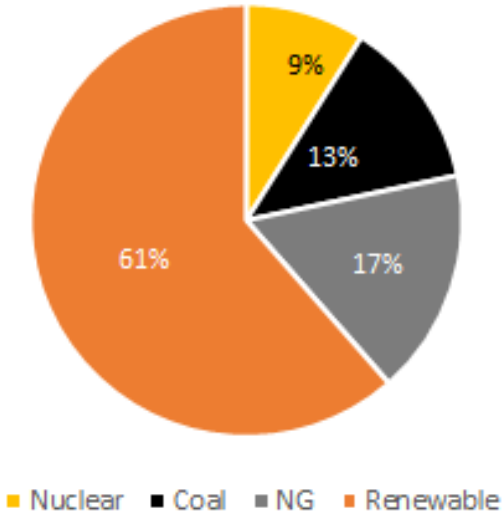
# Generator Commercial Availability

Generation Resource	Commercial Availability Summer Target %	Commercial Availability Actual % Q1 FY24 Avg
Sand Hill Combined Cycle	95	53
Fayette Power Project	97	99
South Texas Project	100	100

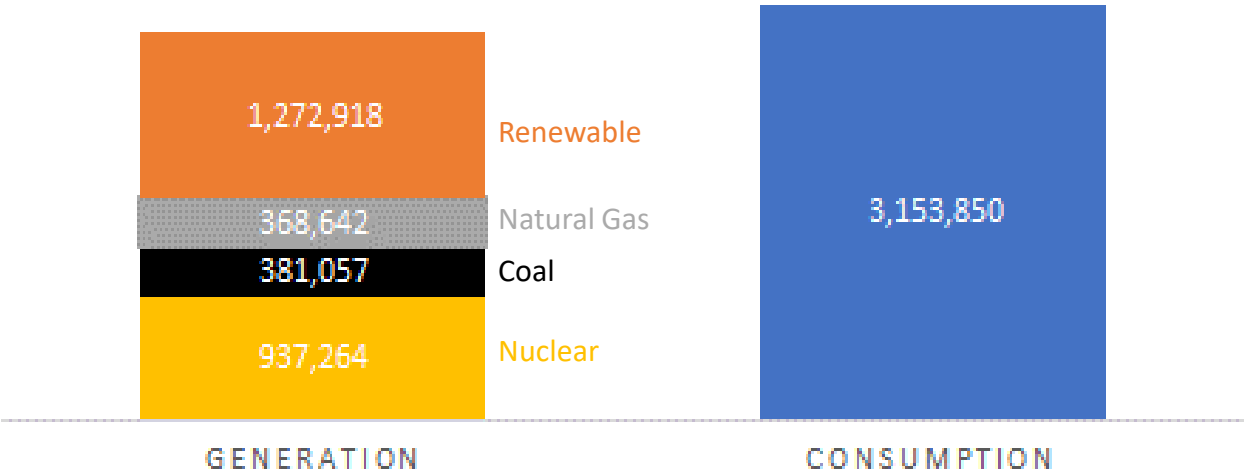


# Net Generation and Load Analysis FY2024 Q1

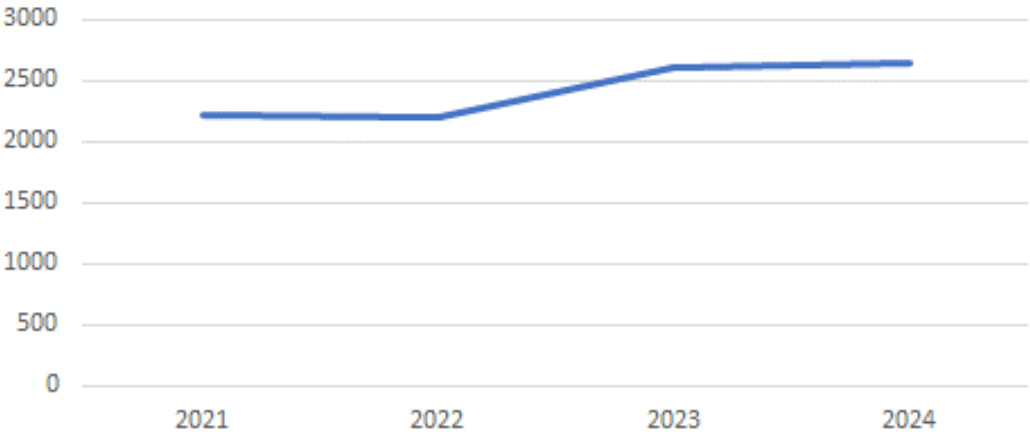
Power Generation Cost by Fuel Type



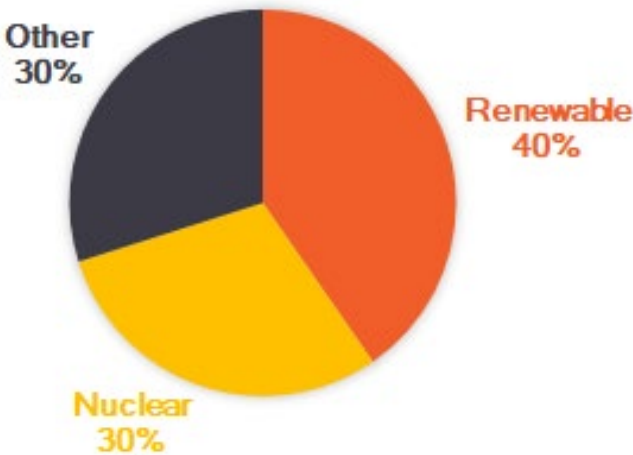
Consumption vs. Generation (MWh)



Historical System Peak Demand in Q1 (MW)



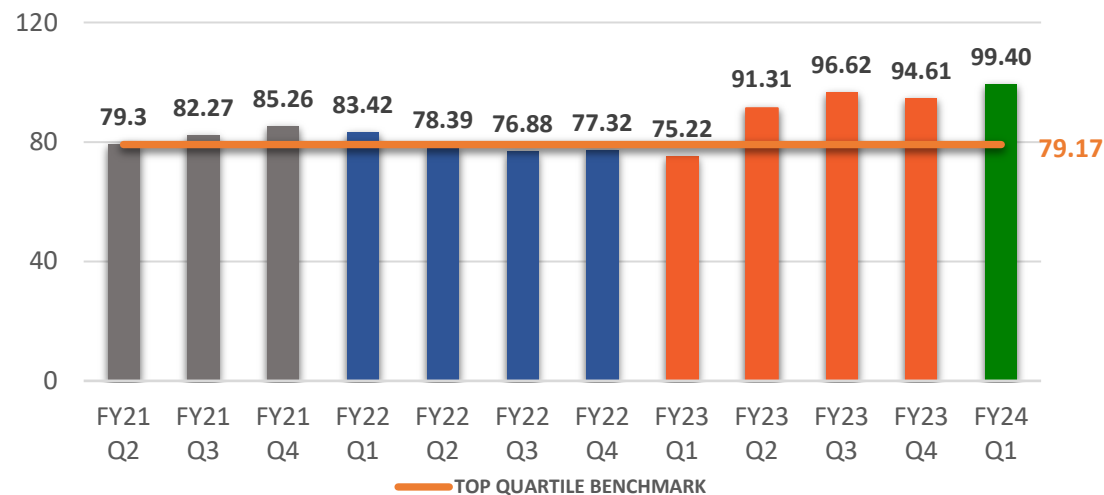
Power Generation as Percent of Consumption



# Distribution System Reliability

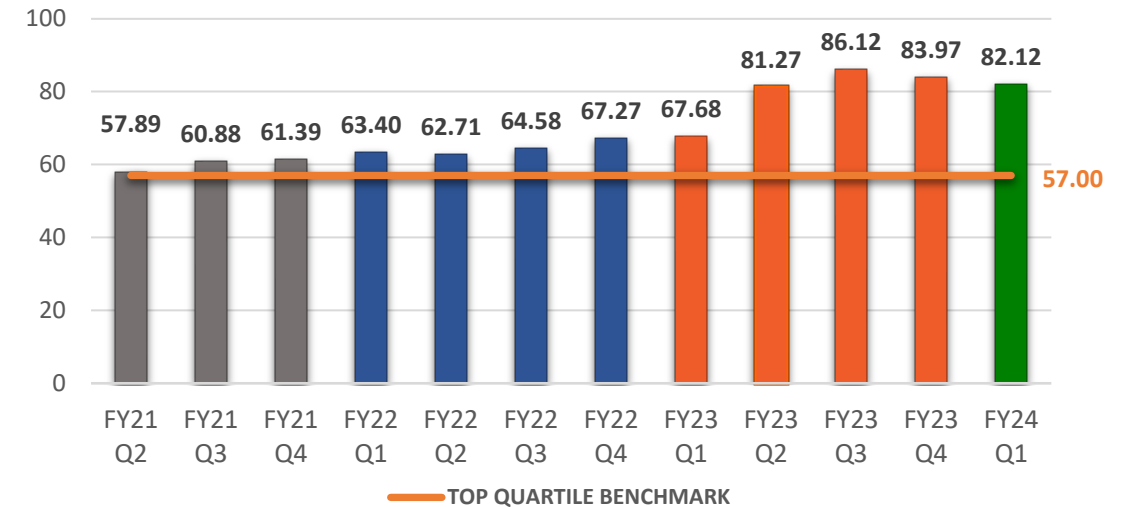
## CAIDI – Customer Average Interruption Duration Index

*Average time to restore service*



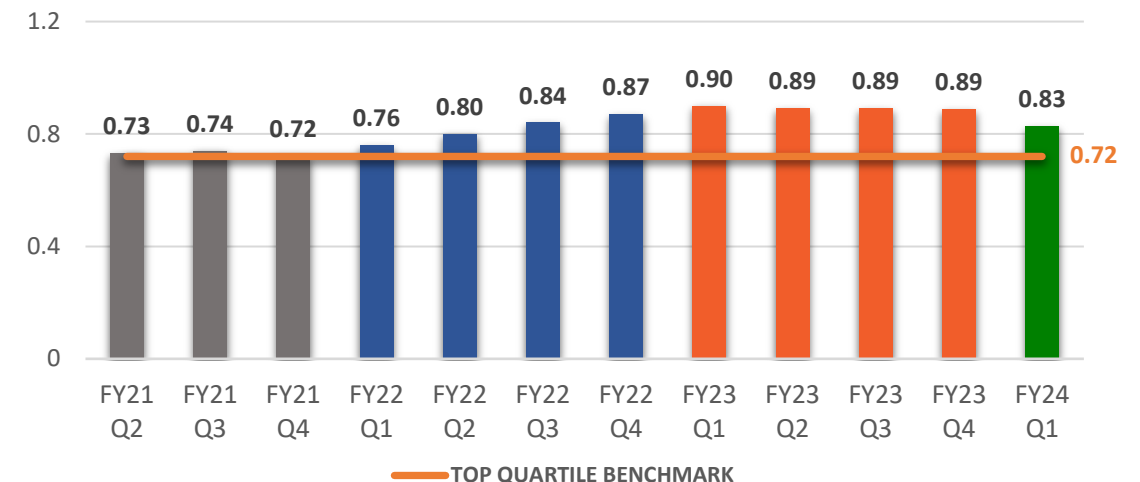
## SAIDI – System Average Interruption Duration Index

*Total duration of interruptions for the average customer*



## SAIFI – System Average Interruption Frequency Index

*How often average customer experiences a sustain interruption*



*Note: CAIDI, SAIDI, SAIFI industry indices exclude major event days*

# Austin Energy Operations Update

## Grid Resilience Strategic Goal



# Grid Resilience Initiatives



## Austin Energy Strategic Goals



## Grid Resilience



### Improve Distribution System Reliability

Identify, rank, and address circuit maintenance needs in areas historically impacted by outages and most susceptible to wildfire risk

- 25 circuits underway; 2 circuits recently reached 100% end-to-end completion
- Overhead Hardening and Underground Feasibility studies kickoff February 2024; Estimated completion December 2024
- Concept Paper for Distribution Resilience submitted for DOE GRIP2.0 grant in January 2024



### Transmission System of the Future

As part of the 2030 Resource Plan, Austin Energy contracted for a transmission system study to investigate ways to achieve the plan's goals while mitigating the impacts of the loss of generation plants

- Transmission System Assessment completed in June 2023; Project implementation underway
- Substation and line upgrades, including upsizing autotransformers and transmission lines and adding voltage support equipment
- New substation in planning stages for increased import capacity



### Resiliency as a Service (RaaS) Program

Providing resiliency and safety to customers and the community through a program that distributes the value of distributed generation assets across the customer base; meets SB398 back up generation rules

- Four RaaS projects submitted as of Q1 FY24
- Program under consideration for RaaS rollout beyond SB398 requirements





**Customer Driven.  
Community Focused.<sup>SM</sup>**



© Austin Energy. All rights reserved. Austin Energy and the Austin Energy logo and combinations thereof are trademarks of Austin Energy, the electric department of the City of Austin, Texas. Other names are for informational purposes only and may be trademarks of their respective owners.