

**3706 Meadowbank Drive  
Austin, Texas 78703**

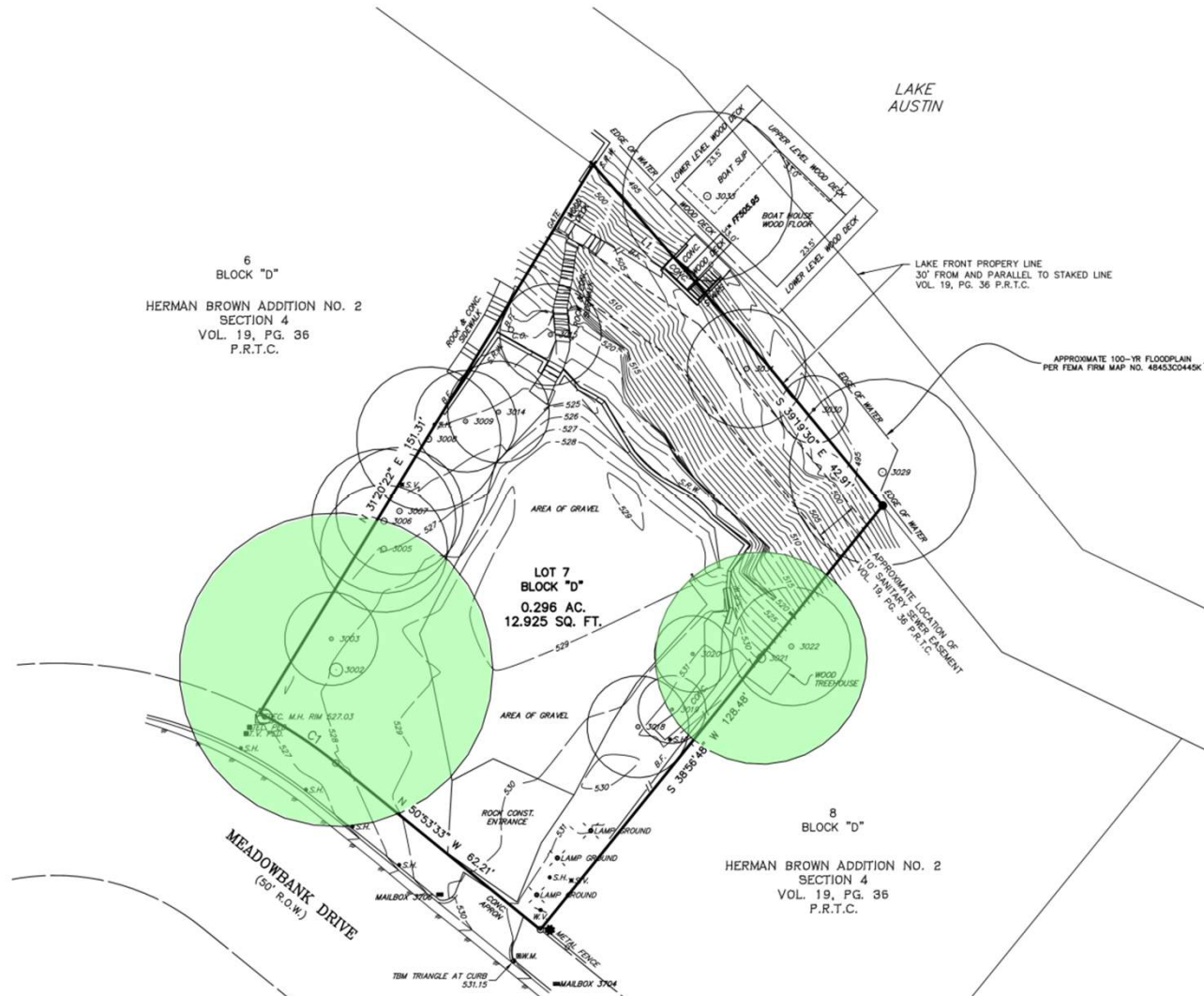
**Board of Adjustment  
Case No. C15-2024-0009**



City of Austin – Board of Adjustment  
Public Hearing - March 11, 2024

*Thrower Design* LLC  
LAND PLANNERS

## ITEM04/2-PRESENTATION



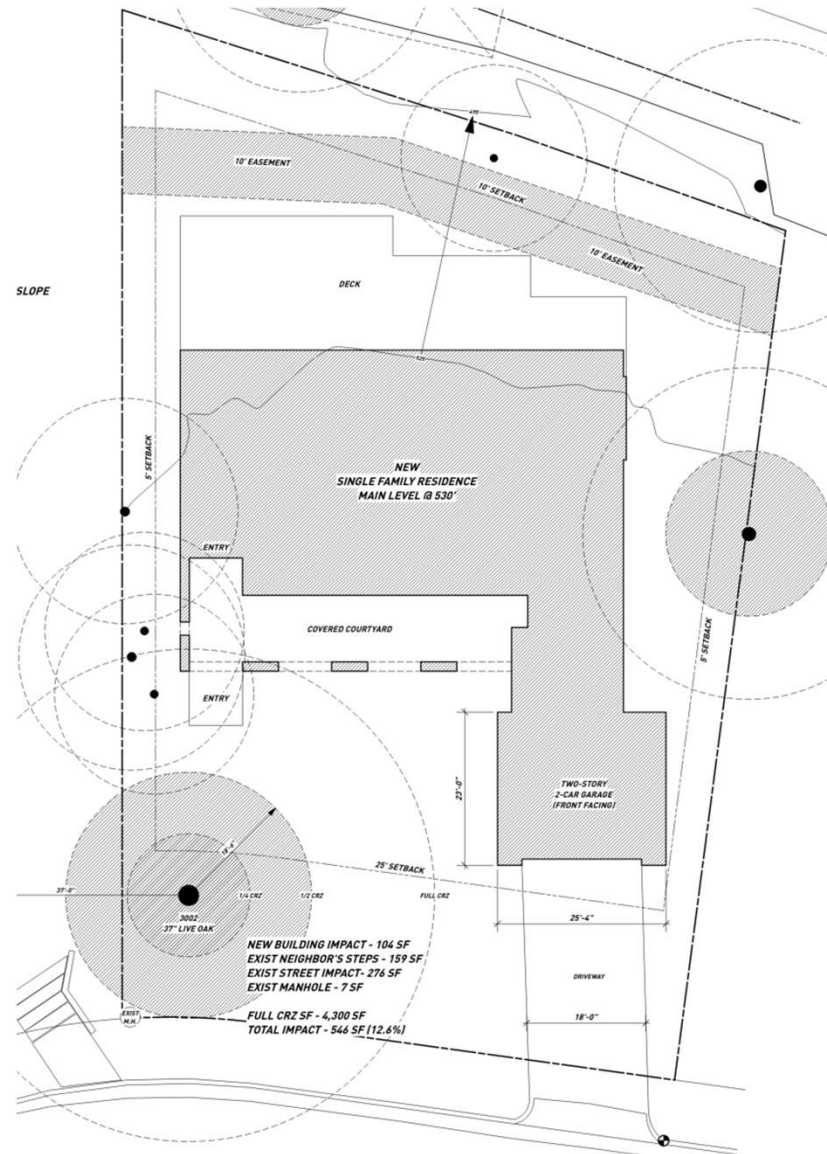
TREE TABLE	
TAG NO.	DESCRIPTION
3002	37" LIVE OAK (19-15-13-7)
3003	11" LIVE OAK
3005	15" LIVE OAK
3006	17" LIVE OAK (13-7)
3007	15" LIVE OAK
3008	17" LIVE OAK (12-10)
3009	12" LIVE OAK
3014	12" LIVE OAK
3015	12" CEDAR ELM
3018	12" CEDAR ELM
3019	8" LIVE OAK
3020	9" LIVE OAK
3021	25" LIVE OAK (13-13-10)
3022	14" CEDAR ELM
3029	22" PALM
3030	8" RED OAK
3031	14" RED OAK
3033	20" CYPRESS

**3706 Meadowbank Dr.- C15-2024-0009**

**City of Austin – Board of Adjustment – March 11, 2024**

**Thrower Design** LLC  
**LAND PLANNERS**





**3706 Meadowbank Dr.- C15-2024-0009**

City of Austin – Board of Adjustment – March 11, 2024



**3706 Meadowbank Dr.- C15-2024-0009**

**City of Austin – Board of Adjustment – March 11, 2024**





3710 MEADOWBANK DR

3706 Meadowbank Dr.- C15-2024-0009

City of Austin – Board of Adjustment – March 11, 2024

*Throuwer Design* LLC  
LAND PLANNERS





3708 MEADOWBANK DR

3706 Meadowbank Dr.- C15-2024-0009

City of Austin – Board of Adjustment – March 11, 2024

*Thrower Design* LLC  
LAND PLANNERS





PROPOSED FRONT ELEVATION

3706 MEADOWBANK DR

3706 Meadowbank Dr.- C15-2024-0009

City of Austin – Board of Adjustment – March 11, 2024

*Throuwer Design* LLC  
LAND PLANNERS





3704 MEADOWBANK DR

3706 Meadowbank Dr.- C15-2024-0009

City of Austin – Board of Adjustment – March 11, 2024

*Throuwer Design* LLC  
LAND PLANNERS



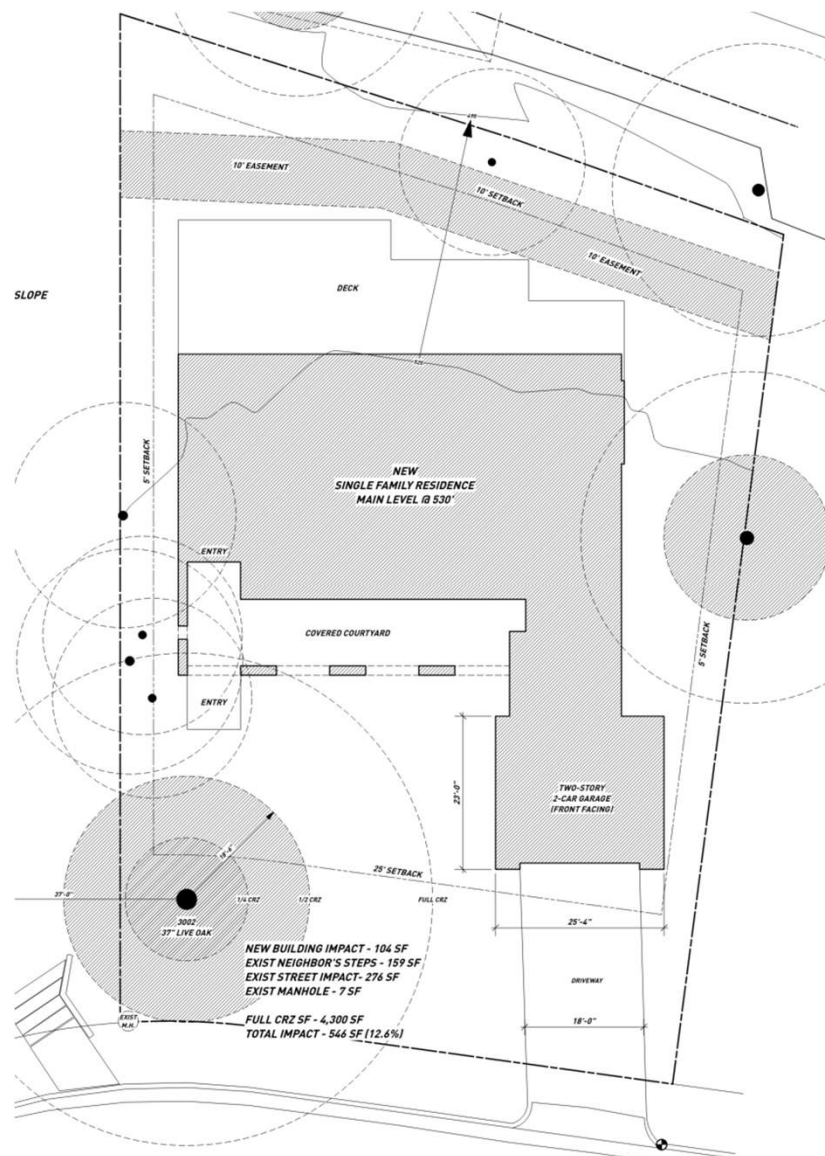


3702 MEADOWBANK DR

3706 Meadowbank Dr.- C15-2024-0009

City of Austin – Board of Adjustment – March 11, 2024

*Thrower Design* LLC  
LAND PLANNERS



**3706 Meadowbank Dr.- C15-2024-0009**

City of Austin – Board of Adjustment – March 11, 2024