

Proposed Extension of Temporary Working Space Easement Located at 4600 Sheringham Drive, Austin, TX, 78741




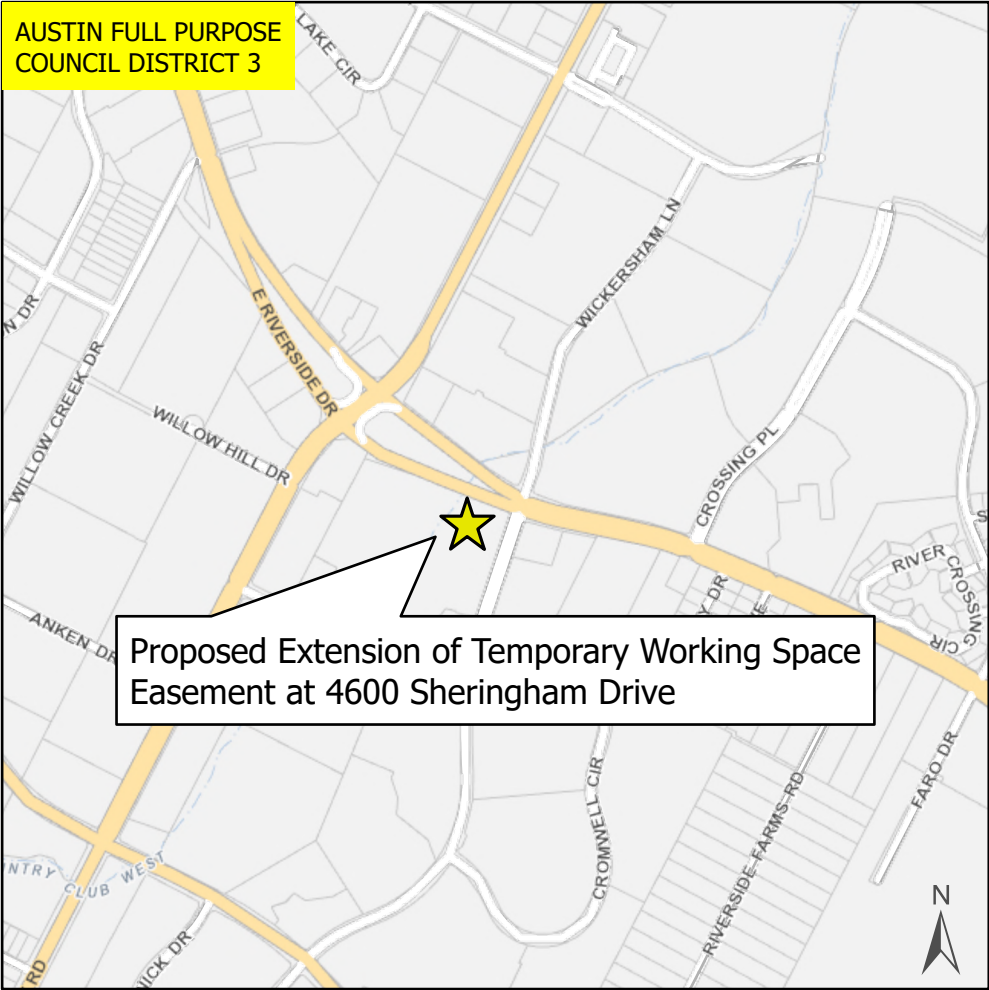
FINANCIAL SERVICES
DEPARTMENT

This product is for informational purposes and may not have been prepared for or be suitable for legal, engineering, or surveying purposes. It does not represent an on-the-ground survey and represents only the approximate relative location of property boundaries.

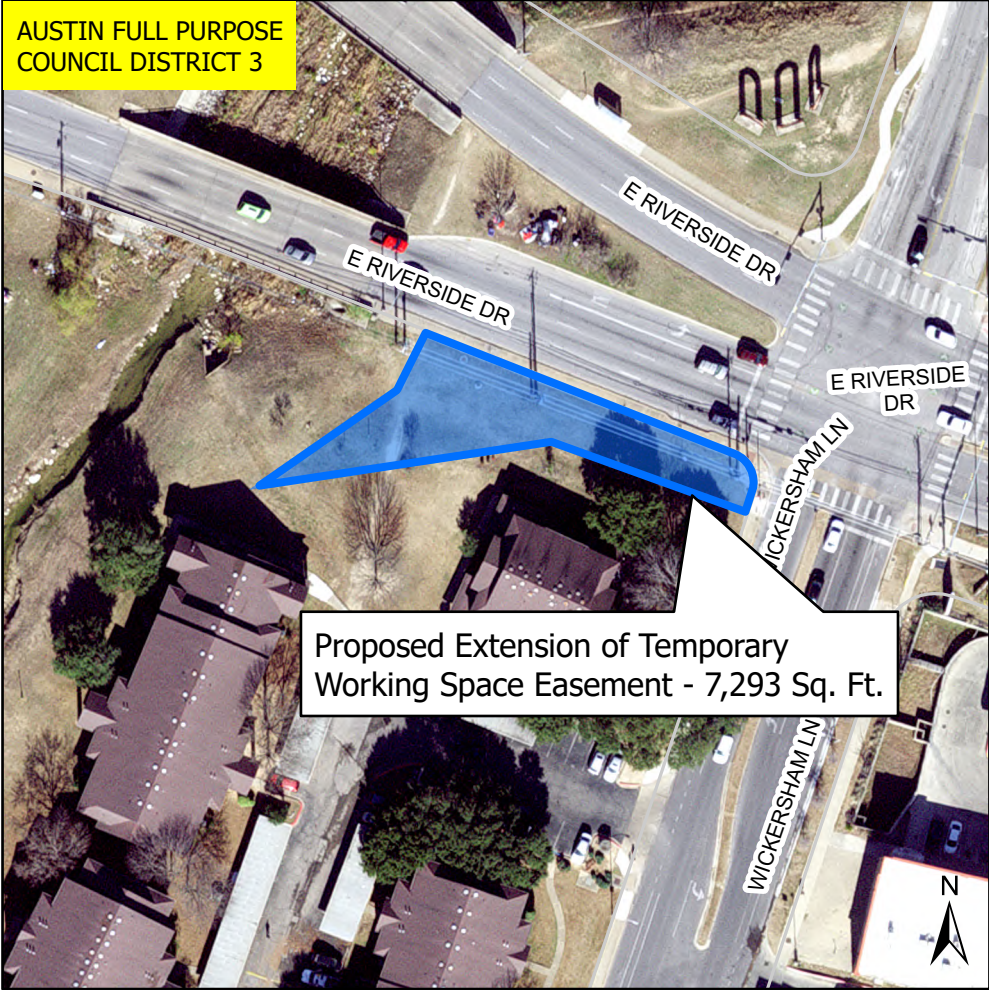
This product has been produced by the Financial Services Department for the sole purpose of geographic reference. No warranty is made by the City of Austin regarding specific accuracy or completeness.

Produced by Tomas Fernandez 2/29/2024

 City Council Districts
Nearmap US Vertical Imagery by ESRI



0 0.7 Miles



0 100 200 300 Feet