

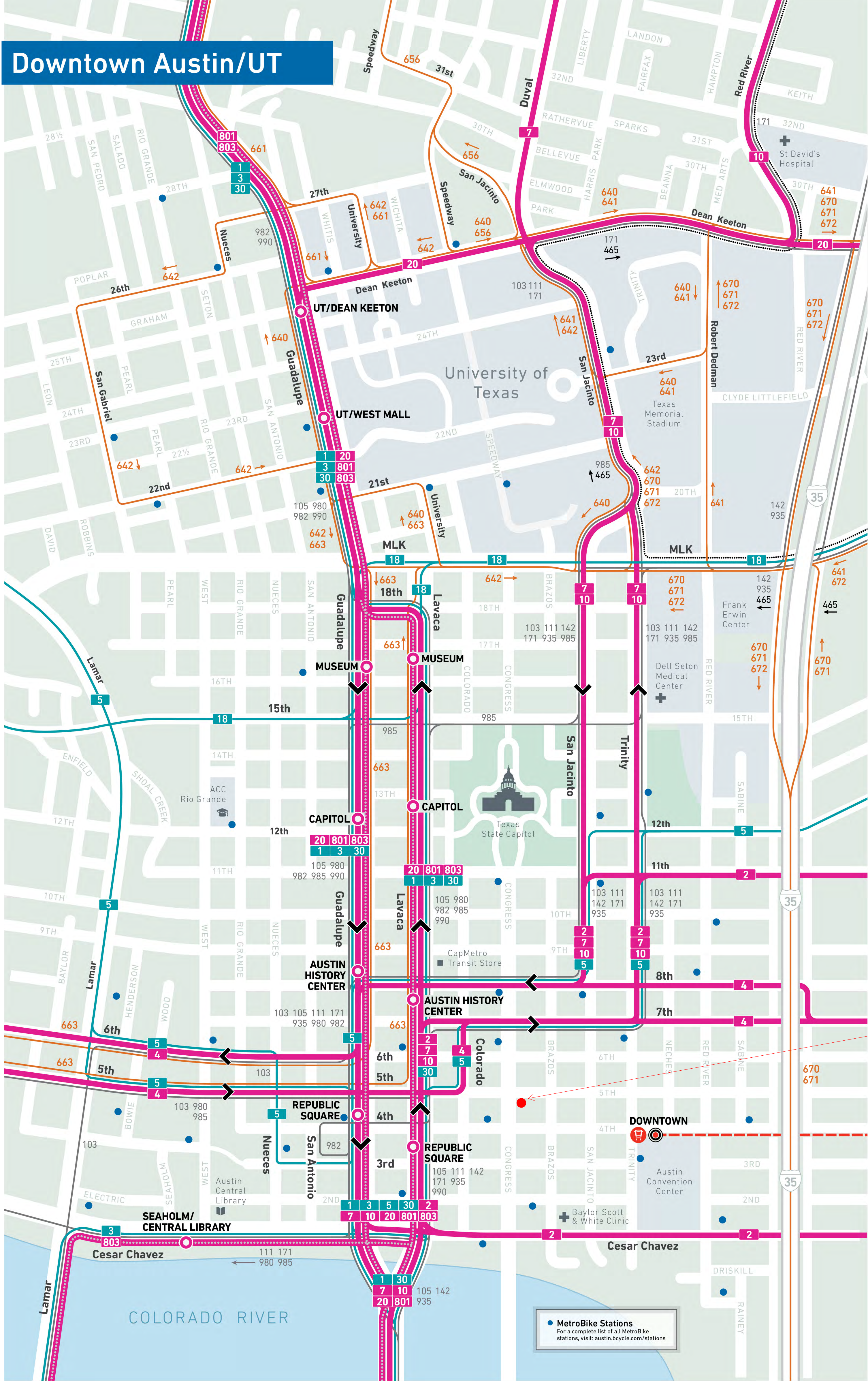
Mexic-Arte Museum Project (25,696 GSF)

Meeting objective: to understand how the project is conforming with Design Guidelines

- Existing building located at 419 Congress Avenue
- Congress Avenue Historic District, however, the building is not historic
- Congress Avenue Façade will be rehabilitated, the remainder of the building will be demolished
- American Alliance of Museums Accreditation
- Requires new floor to floor heights of 18'-6"
- Requires new structure and foundations to meet loading requirements appropriate for museum occupancy
- LEED Silver Certification | AEGB 2 Stars
- Great Streets Program
- Program Requirements:
 - Museum Store
 - Galleries
 - Loading/Unloading
 - Administrative Offices
 - Support Spaces
 - AIPP (Art in Public Places) Mural
 - Rotating Mural Program
 - AD Space



Downtown Austin/UT



MEXIC-ARTE MUSEUM
5TH STREET & CONGRESS AVE.

E 5TH STREET
80' R.O.W. - ASPHALT
XXXXX ACRES
(25 M.P.H. SPEED LIMIT)

CONGRESS STREET
118' R.O.W. - ASPHALT
XXXXX ACRES
(25 M.P.H. SPEED LIMIT)

MEXIC-ARTE MUSEUM

PROPOSED PLANTER / BOLLARD LOCATION

BIKE RACK

DRAKE ELM WITH TREE GRATE

LIGHT POLE

8'-6" TREE & FURNITURE ZONE

9'-4" SIDEWALK

CONCRETE SIDEWALK

DO NOT ENTER

BOLLARD

PEDESTAL

6" FL(OUT)=495.38'

ACCESS ESMT. DRAINAGE ESMT. AND P.U.E.
DOC. NO. 2001007921
BEHZAD BAHRAMI
DOC. NO. 200805056

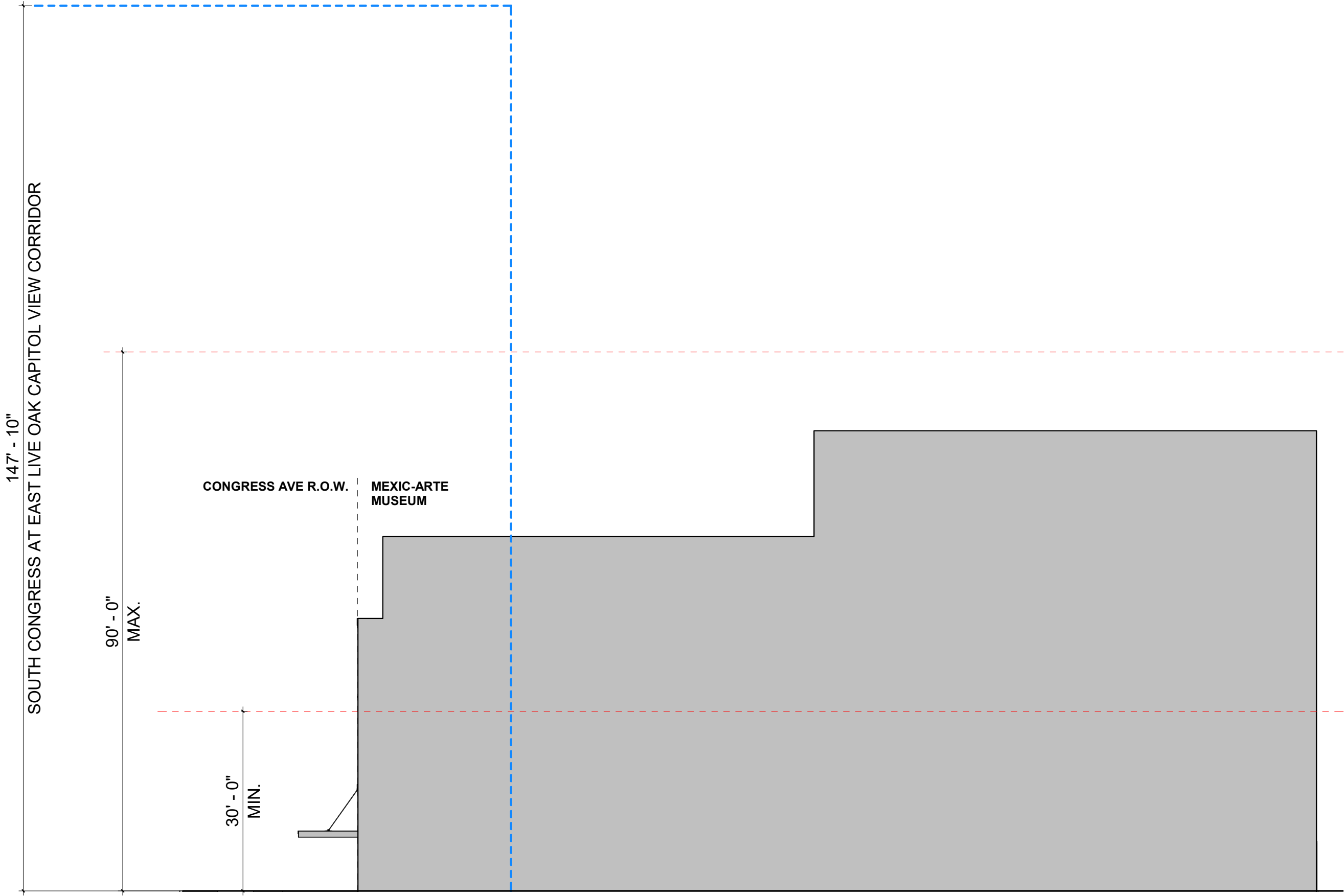
LAND USE: COMMERCIAL

LEGAL DESCRIPTION:
W 80FT OF LOT 7-B BLOCK 042 ORIGINAL CITY PLUS PT OF VAC ALLEY

ZONING CBD-H

WMMH NO.132765
RM ELEV.484.04
R' FL(OUT)=495.60'

SCALE: 1/8" = 1'-0"



147' - 10"
SOUTH CONGRESS AT EAST LIVE OAK CAPITOL VIEW CORRIDOR

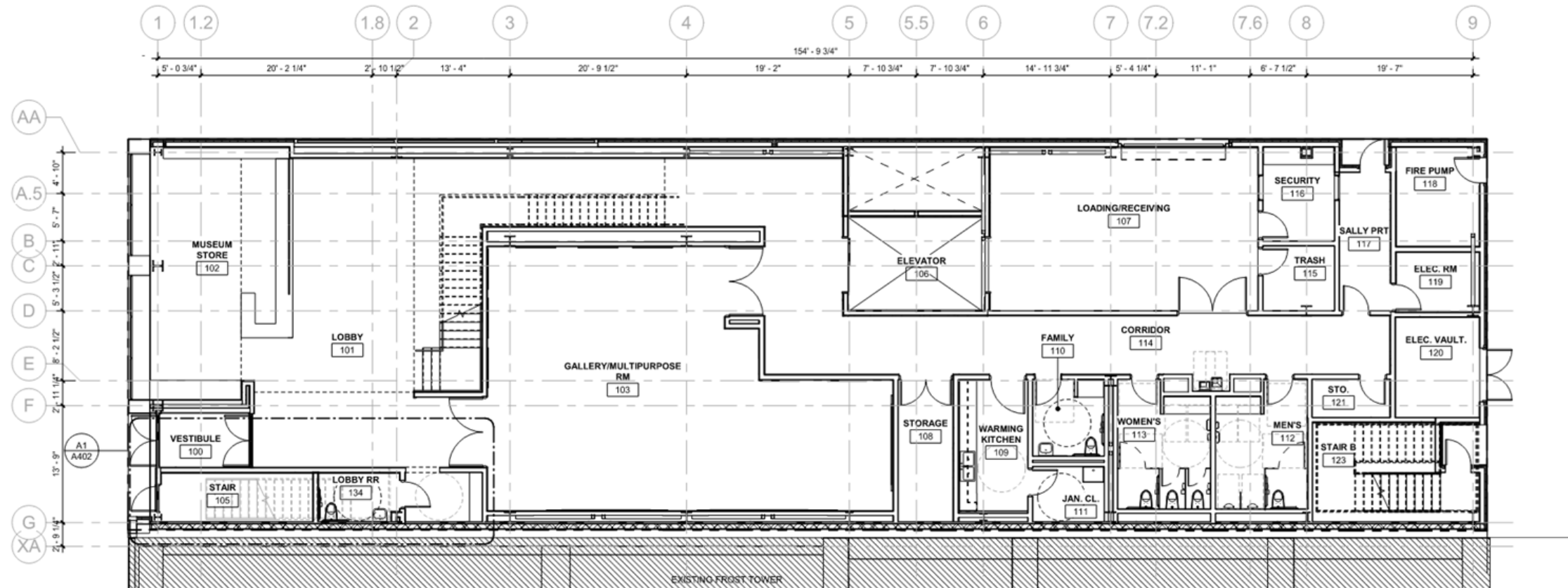
90' - 0"
MAX.

CONGRESS AVE R.O.W.

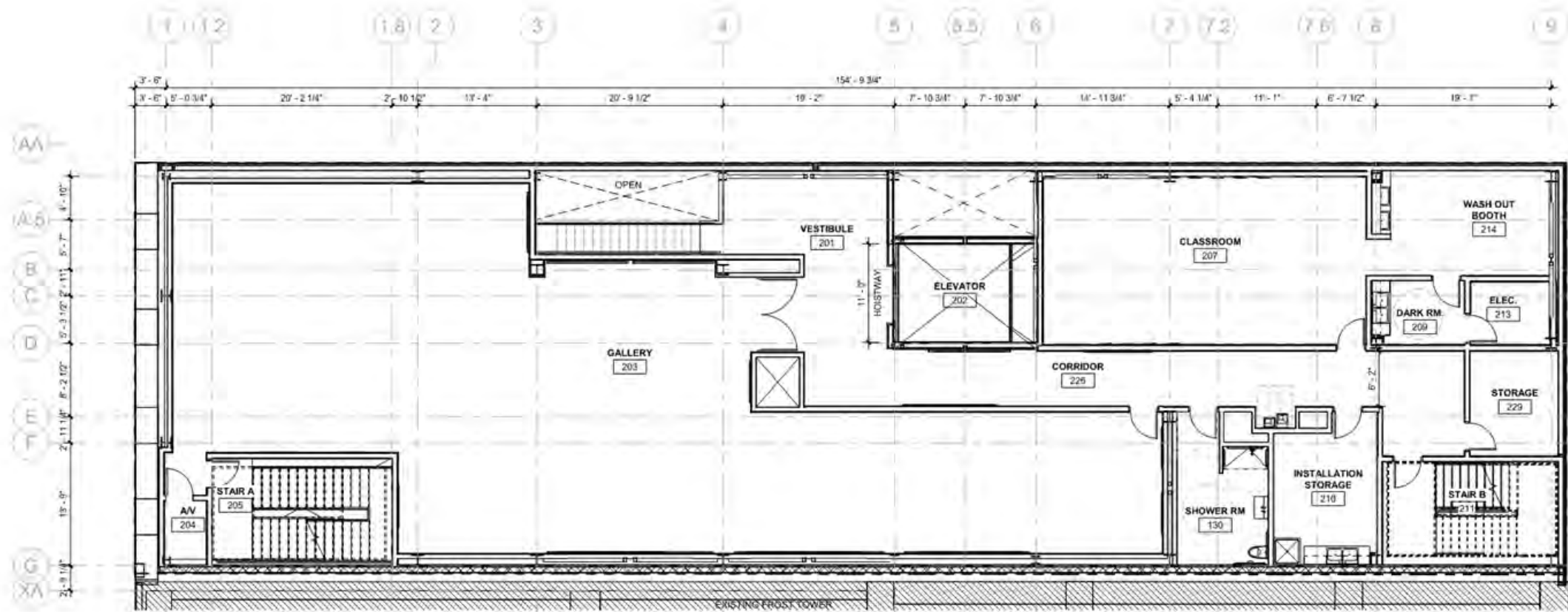
MEXIC-ARTE
MUSEUM

30' - 0"
MIN.

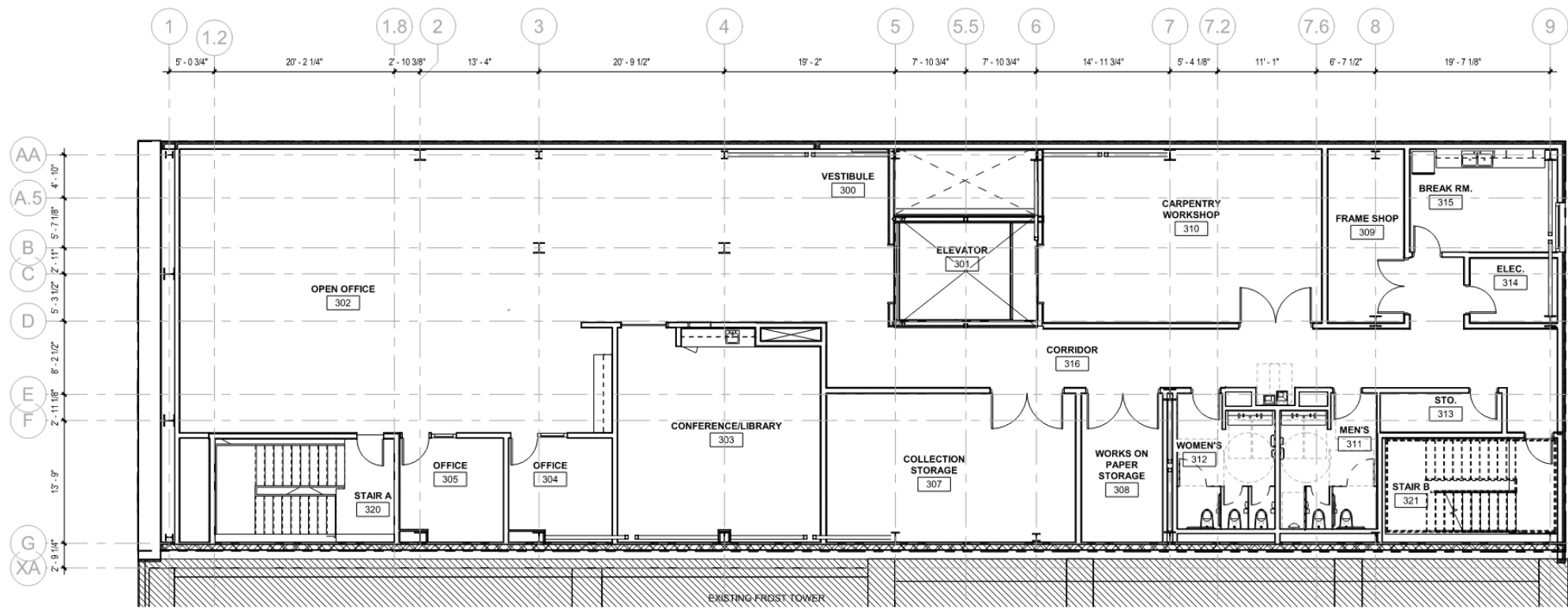
Level 1 Plan



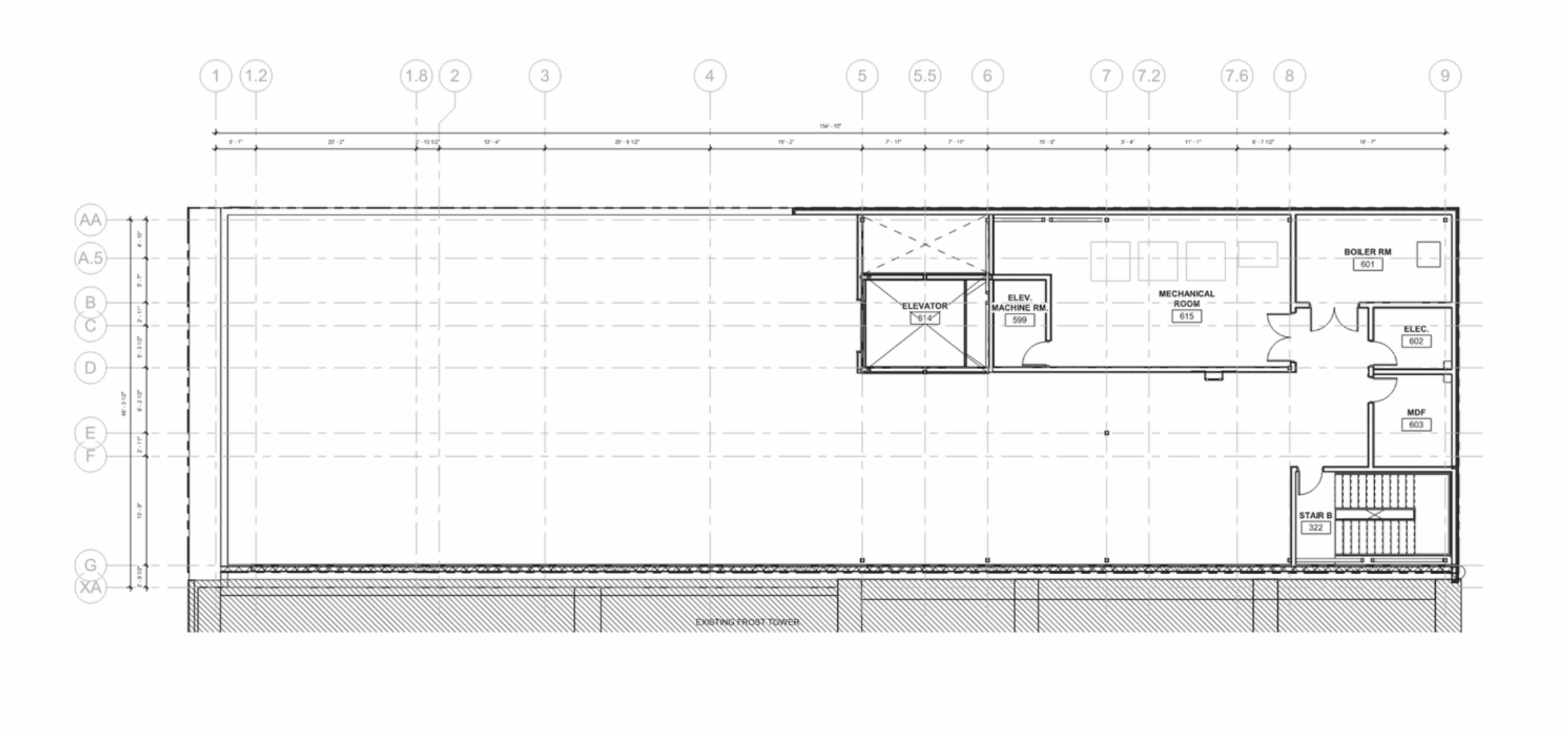
Level 2 Plan



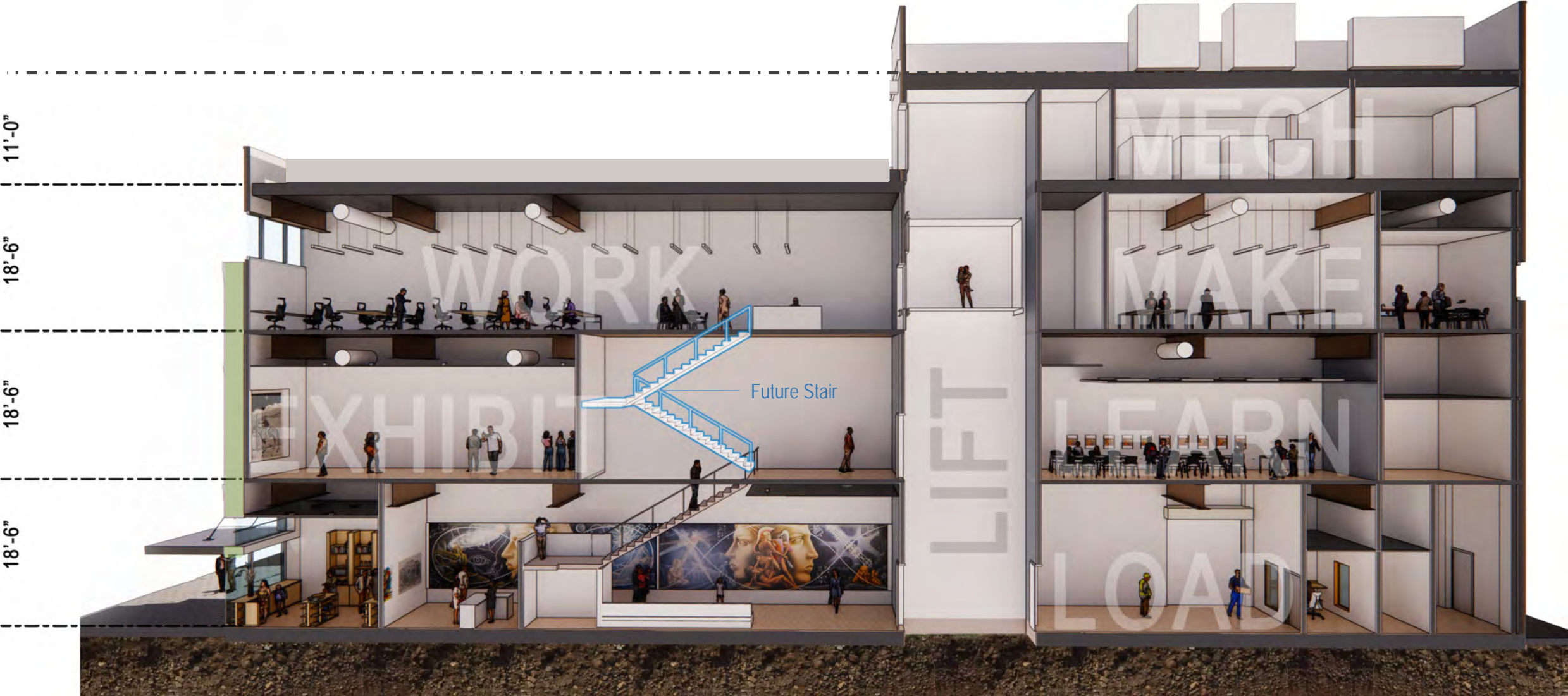
Level 3 Plan



Roof Level Plan



Building Section





MEXIC-ARTE MUSEUM



MEXIC-ARTE MUSEUM



