

# Distribution Resilience Program

Elaine Veselka

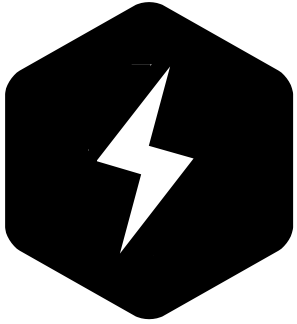
Vice President, Electric System Engineering & Technical Services



April 30, 2024

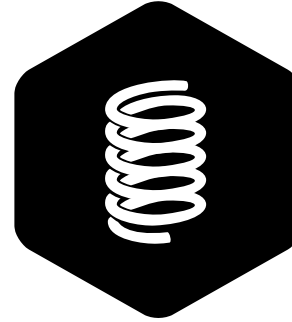
© Austin Energy

# Reliability and Resilience



## Reliability

- Performing consistently well
- Performs intended function without failure over time and in specified conditions



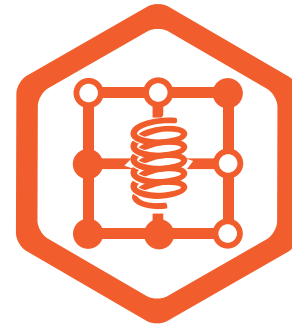
## Resilience

- Capacity to withstand or recover quickly from difficulties
- Toughness
- The ability to spring back into shape



## Distribution Reliability

Performance of the distribution system as originally designed, built and operated for safety, power quality and infrastructure protection



## Distribution Resilience

Reliability factors, plus incorporating self-healing and hardening techniques to withstand and recover more quickly from unplanned events

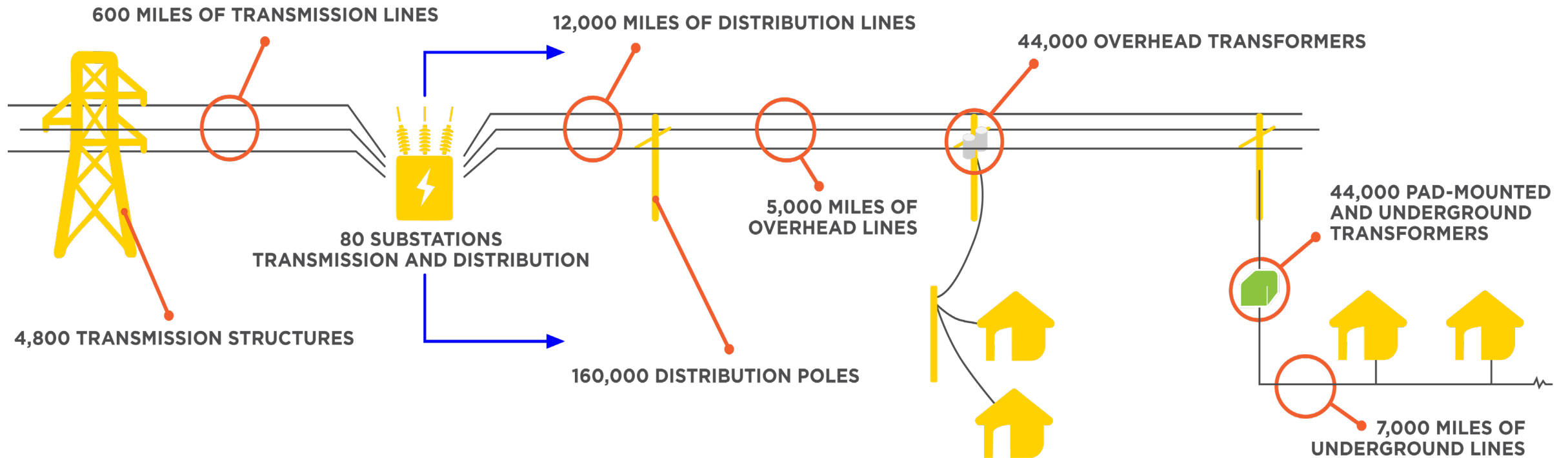
# Austin Energy Distribution Resilience Program

## Reliability + Resilience

Improve service reliability and minimize impacts from outage events through maintenance, upgrades and technology enhancements across the distribution system that delivers electricity to homes and businesses.



# Austin Energy's Distribution System Overview



# Reliability Indices – Fiscal Year 23

Average number of interruptions  
a year per customer

Texas Electric  
Utilities Avg

1.62

Austin Energy

0.89

Average interruption length  
in minutes

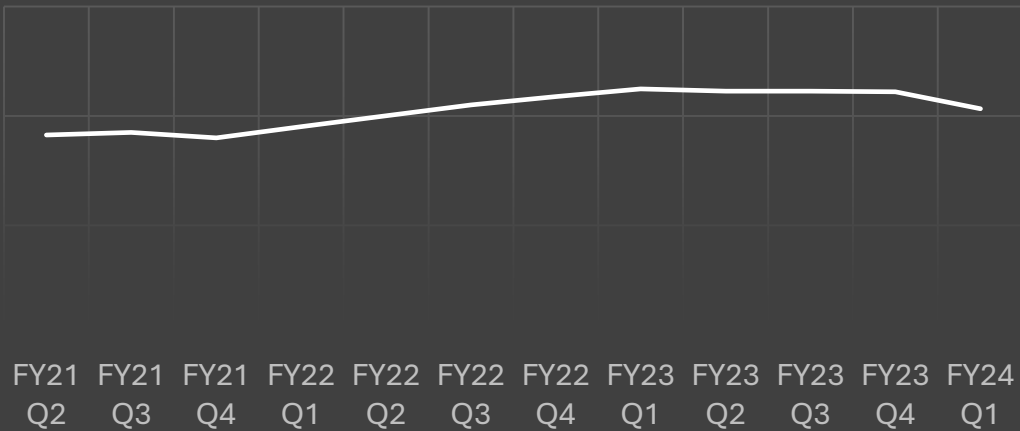
Texas Electric  
Utilities Avg

184.19

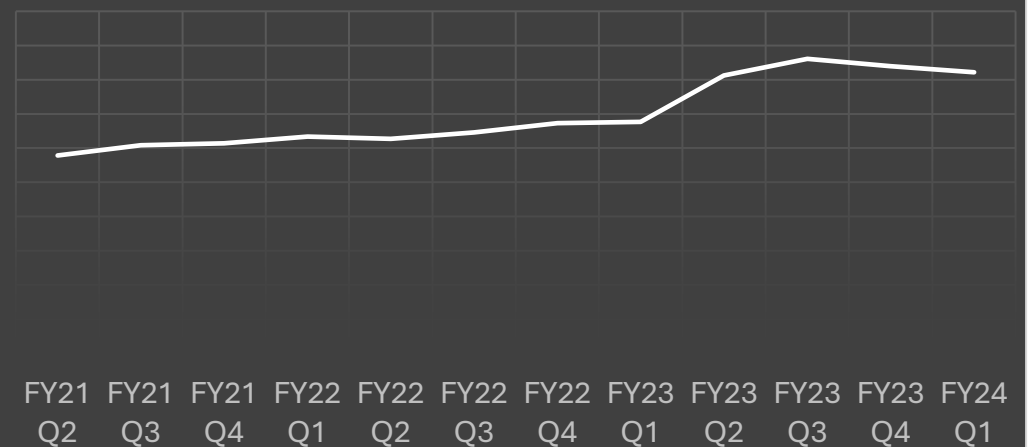
Austin Energy

83.97

Austin Energy trendline



Austin Energy trendline



Industry data comparisons exclude major event days.



# Distribution Reliability

Infrastructure  
maintenance



Maintaining optimal  
system configuration

Design and construction  
to utility standards



Engineering  
coordination studies

Vegetation  
management

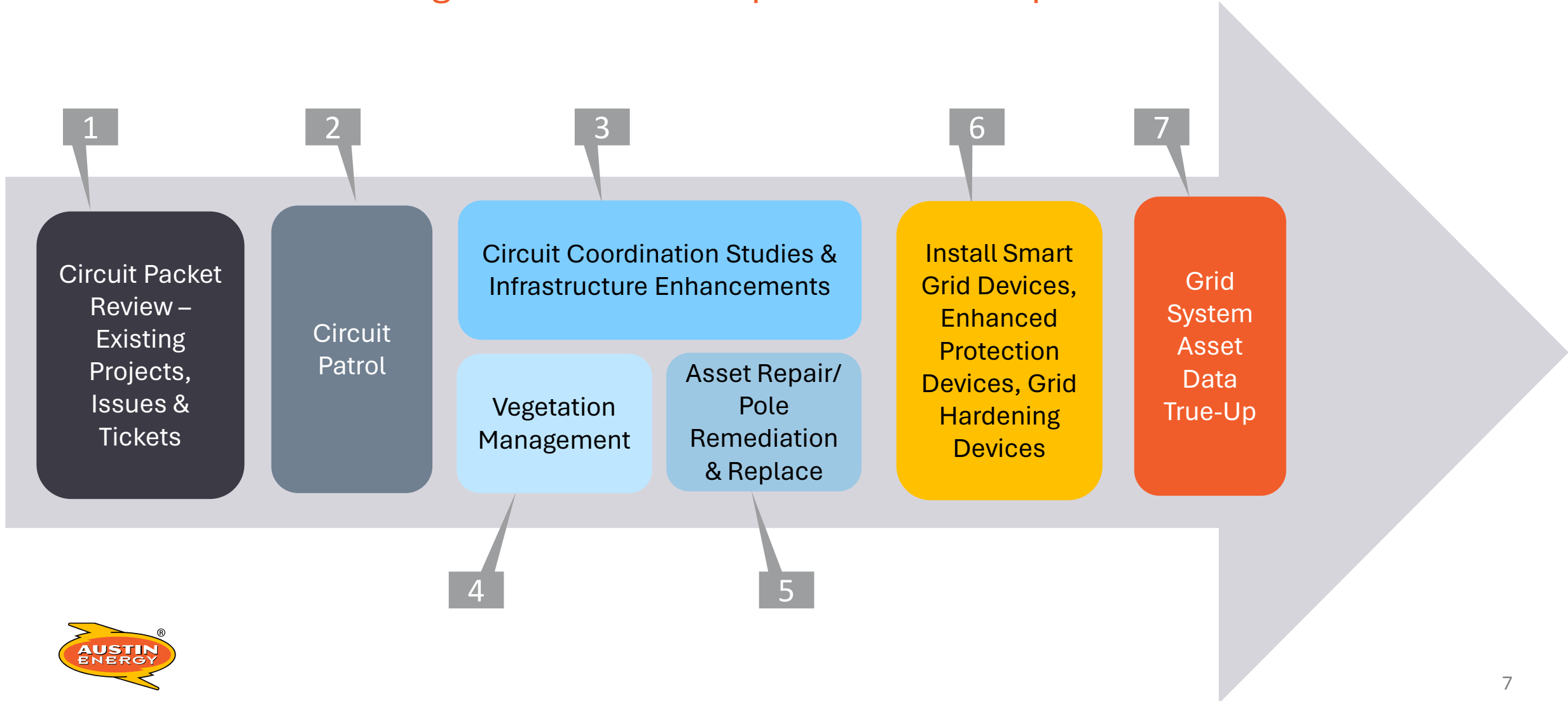


Manual operations to  
proactively prevent  
power disruptions



# Circuit Hardening Program

An end-to-end Distribution Mitigation Program for long-term health and performance improvement



# Tactical Infrastructure Enhancements

## Distribution Reliability

### Identify & Prioritize

Issues across system, considering

- Critical loads
- High impact maintenance tickets
- Frequency of outages / repeat outages
- Frequency of momentary outages



## Engineering

### Develop Solutions

Re-design, reconfigure and identify improvements to mitigate identified issues

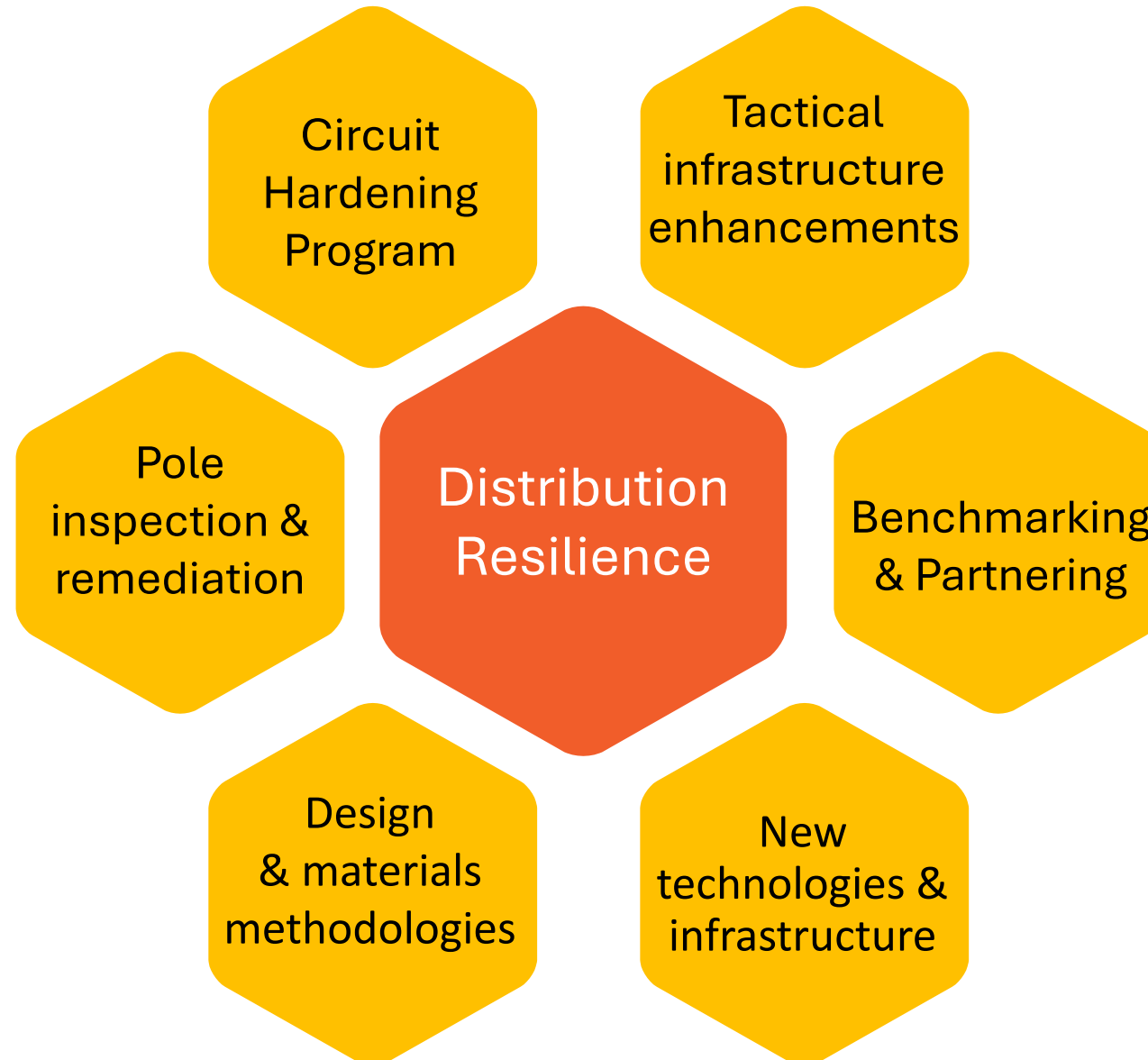
## Field Operations

### Install & Implement

Completes the necessary work to install or implement the solution



# Austin Energy's Distribution Resilience Program

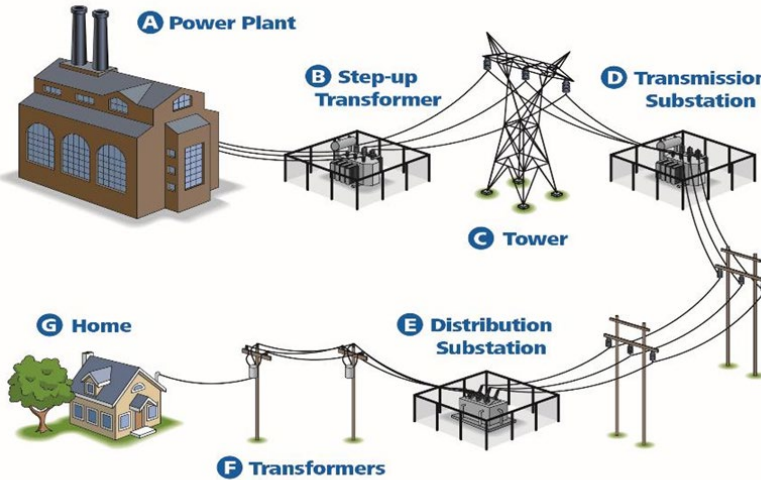


# Additional Opportunities



## Underground Feasibility & Overhead Hardening Study

- Partially covered by FEMA Building Resilient Infrastructure and Communities (BRIC) Grant
- Results expected end of 2024



## GRIP Grant Application

- U.S. Dept. of Energy – \$3.5B available in resilience grants
- Austin Energy actively pursuing grant to implement circuit rehabilitation and automation



## Future Grants

Continuously exploring funding opportunities to improve reliability and resilience

QUESTIONS?



**Customer Driven.  
Community Focused.<sup>SM</sup>**

