

Walnut Creek

WASTEWATER TREATMENT PLANT

Renewal and Expansion Capital Improvements

Water & Wastewater Commission
May 8, 2024

Charles Celauro, PE

Assistant Director, Engineering Services





Agenda

1. Project History: Walnut Creek Wastewater Treatment Plant
2. Construction Manager at Risk (CMAR) Projects
 - Expansion and Enhancements
 - Primary Clarifier and Flow Equalization Basin Rehab





Project History

Project History

WALNUT CREEK WWTP Treatment Capacity

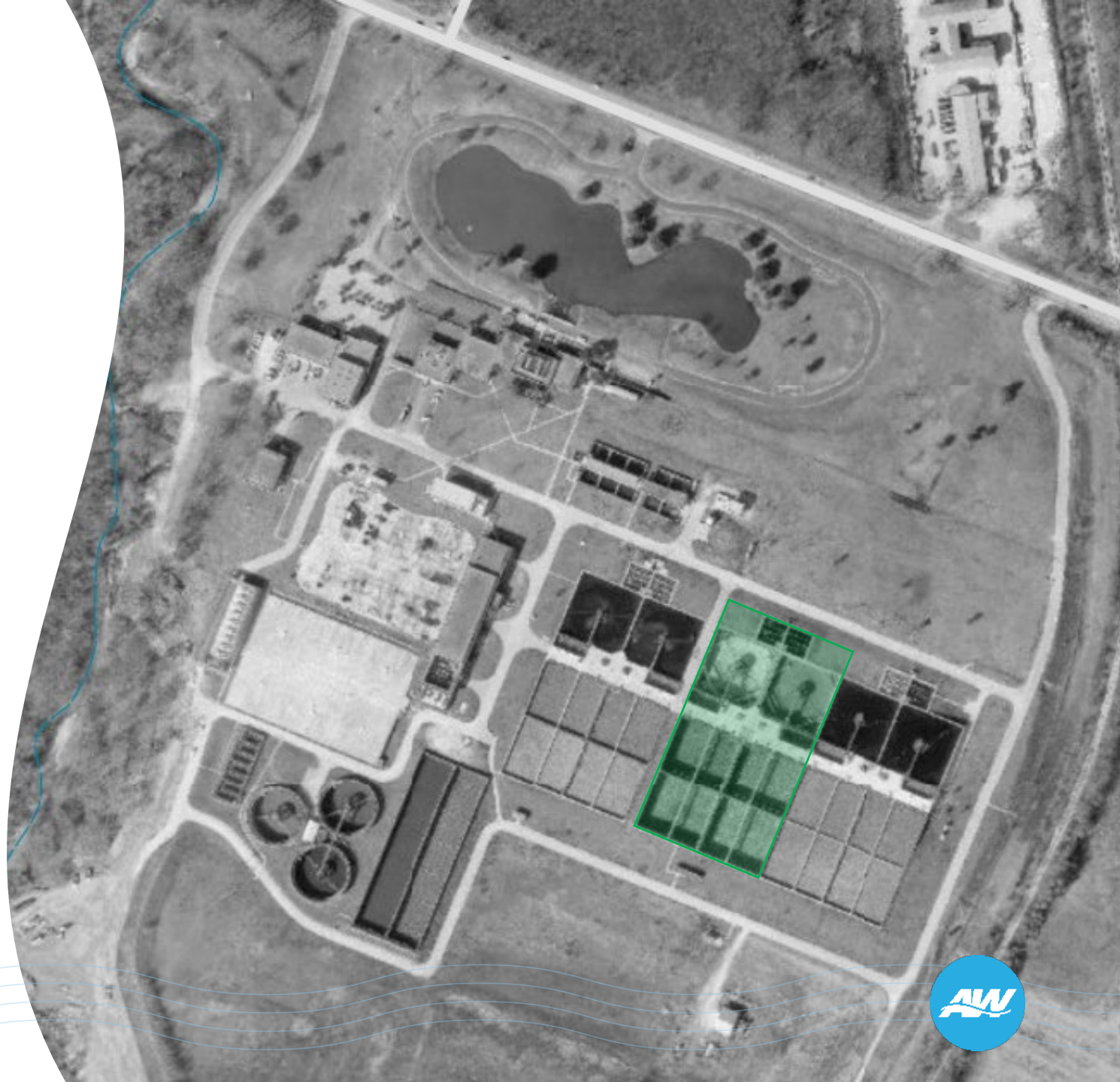
- **1977 – 18** MGD



Project History

WALNUT CREEK WWTP Treatment Capacity

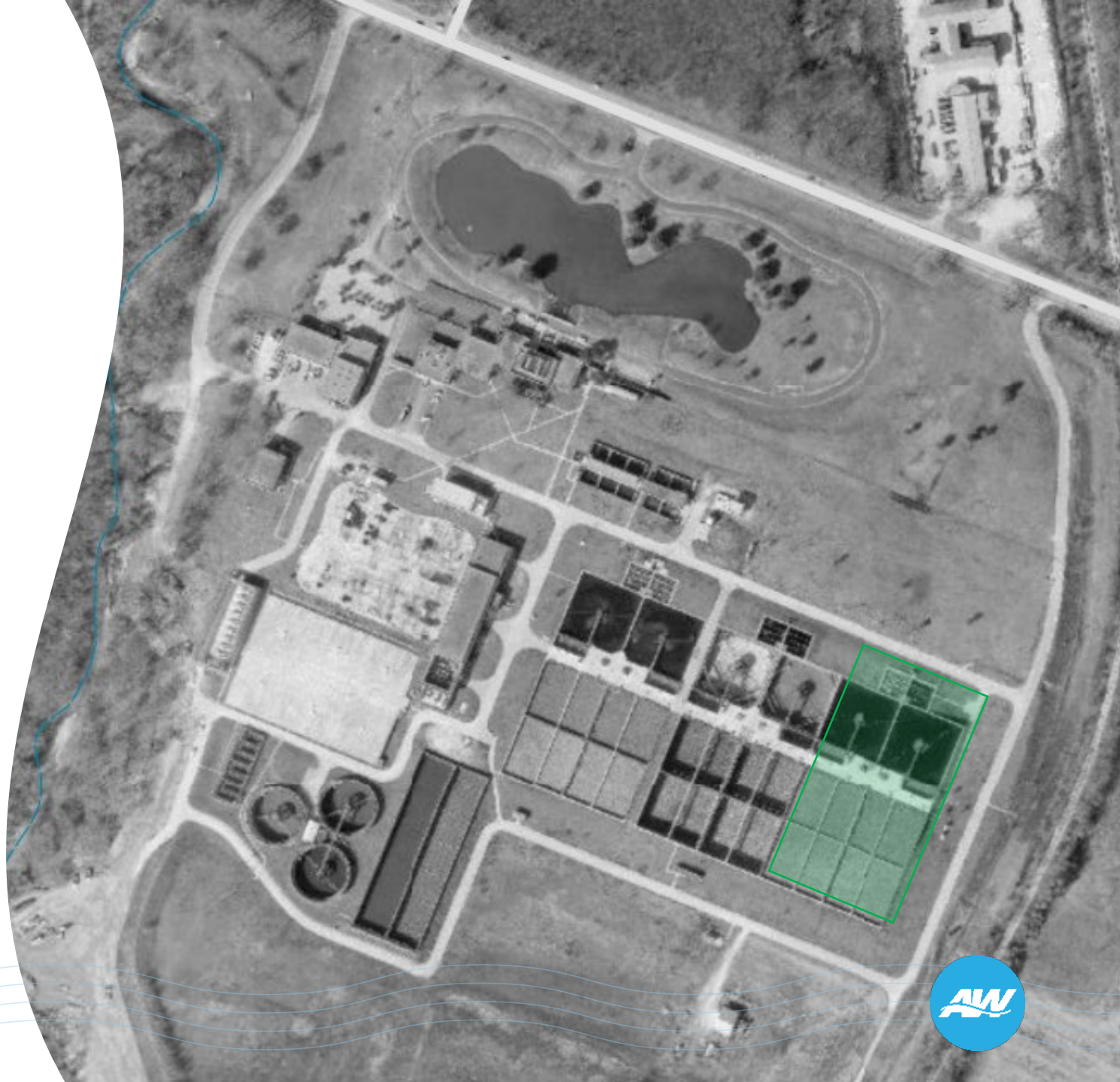
- **1977 – 18** MGD
- **1987 – 40** MGD



Project History

WALNUT CREEK WWTP Treatment Capacity

- **1977 – 18** MGD
- **1987 – 40** MGD
- **1990 – 60** MGD



Project History

WALNUT CREEK WWTP Treatment Capacity

- **1977 – 18** MGD
- **1987 – 40** MGD
- **1990 – 60** MGD
- **2005 – 75** MGD



Project History

WALNUT CREEK WWTP

Treatment Capacity

- **1977 – 18** MGD
- **1987 – 40** MGD
- **1990 – 60** MGD
- **2005 – 75** MGD
- **2019** – Optimization and Facility Master Plan



Project History

WALNUT CREEK WWTP

Rehabilitation and Renewal Projects

- **2000** – Reclaimed Water
- **2002** – Headworks #2
- **2009** – Electrical Distribution
- **2013** – Reclaimed Water
- **2017** – Tertiary Filter
- **2019** – Secondary Treatment
- **2020** – Sludge Thickener
- **2020** – Pump Replacements
- **2021** – Plant Control & Network
- **2022** – Gas Scrubber



Current Projects

WALNUT CREEK WWTP

- Primary & FEB Clarifiers
- Headworks #1
- Influent Lift Station
- Expansion to 100 MGD





Construction Manager at Risk (CMAR) Projects

Collaborative Delivery

Design → Bid → Build

Owner

Engineer

Design 100%

Contractor

Competitive Low Bid

Construction Manager
at Risk (CMAR)

Owner

Engineer

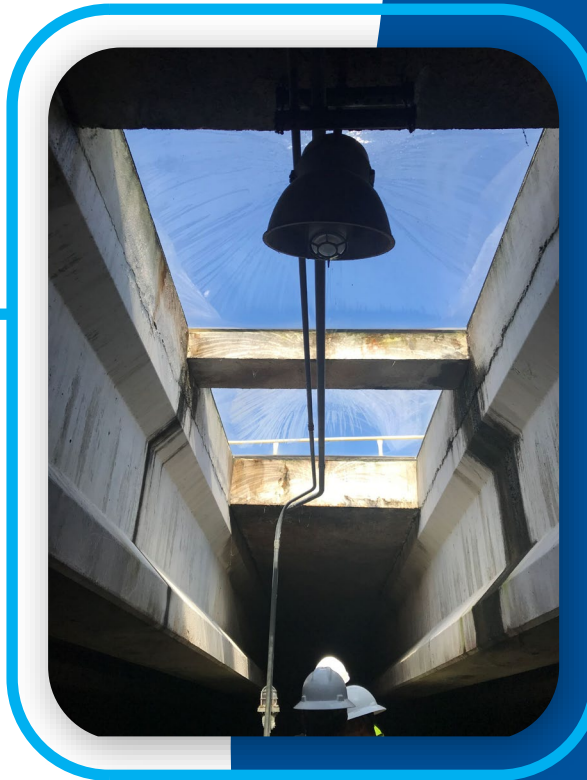
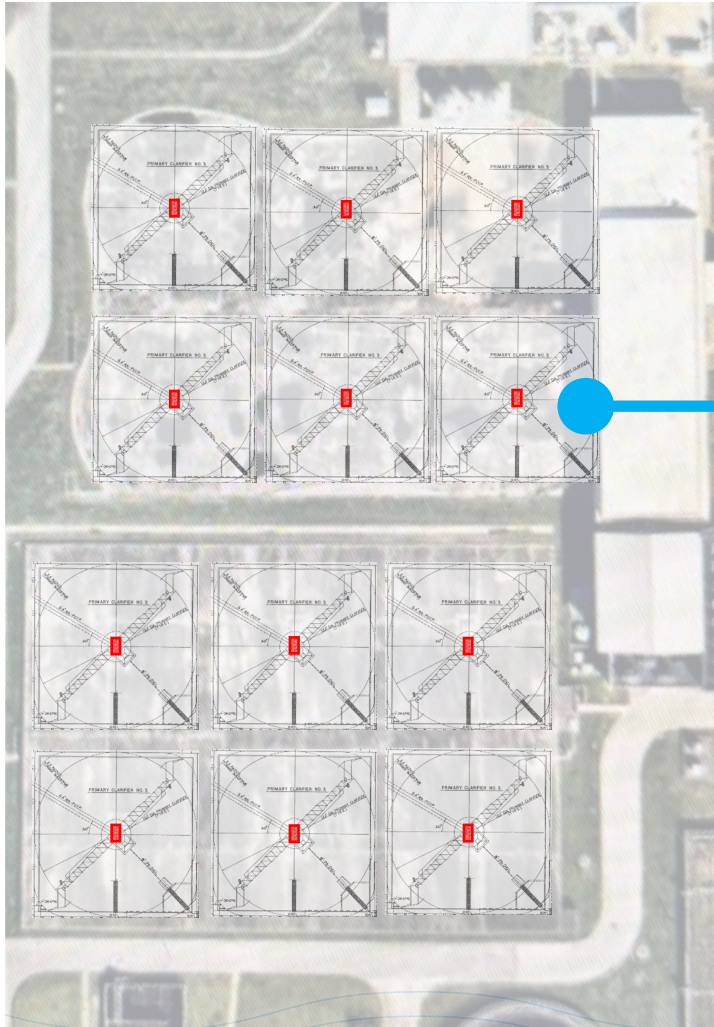
Design 60-90%

Contractor

Qualifications & Cost



Primary Clarifier & Flow Equalization Basin



Primary Clarifier and Flow Equalization Basin

◆ CMAR Project Development Findings

- ❖ Constructability Challenges
- ❖ Project duration increased from 2 years to 5 years
- ❖ Temporary wet weather bypass for continuous plant operation
- ❖ Temporary and permanent heating, ventilation & cooling (confined space)
- ❖ Rising costs for key electrical and mechanical equipment
- ❖ Grout replacement
- ❖ Structural crack repair

◆ Increased Scope to Advance Expansion Project

- ❖ Meter vault for plant continuous operation
- ❖ Headworks #2 slide gates to isolate treatment trains and complexes
- ❖ Odor control demolition for coordination with other plant improvements

Primary Clarifier and Flow Equalization Basin Requests for Council Action

RCA	CIP Project	RCA Scope	RCA Amount
1	Walnut Creek WWTP Primary Clarifier and Flow Equalization Basin Rehab	An amendment to Black & Veatch consulting engineering contract	\$17,000,000
2	Walnut Creek WWTP Primary Clarifier and Flow Equalization Basin Rehab	An amendment to MGC Contractors CMAR construction contract	\$127,300,000

Expansion to 100 MGD and Enhancement

❖ Renewal Projects

- Headworks #1 renewal
- Influent lift station

❖ Expansion Projects

- New 25 MGD with nutrient removal
- Influent pipe
- Outfall pipe

❖ Treatment Conversion

- 75 MGD with nutrient removal
- UV disinfection

❖ Protection of Plant

- Wet weather treatment facility
- Flood wall



Expansion to 100 MGD and Enhancement Requests for Council Action

RCA	CIP Project	RCA Scope	RCA Amount
1	Walnut Creek WWTP Headworks Improvements	An amendment to Carollo consulting engineering contract	\$9,000,000
2	Walnut Creek WWTP Influent Lift Station	An amendment to CDM Smith consulting engineering contract	\$2,850,000
3	Walnut Creek WWTP 100MGD Expansion and Enhancement	An amendment to AECOM consulting engineering contract	\$71,000,000
4	Walnut Creek WWTP 100MGD Expansion and Enhancement	Selection of MWH Contractors to be the CMAR Contractor	\$900,000,000

Questions?

Austin
WATER

