

# 600 Congress Ave | Exterior Signs Master Plan

Permit Art  
Not for construction  
Date  
7.10.2024

# 600 CONGRESS

## Exterior Signs - Master Plan

## Overview - Master Sign Plan

### • Electrical, illuminated Signs:

- Awning Sign (5x): total display area: **106 SF**
- Wall Sign (4x) - total display area: **55 SF**
- Projecting Sign (1x) - total display area: **6 SF**

• Congress Ave. Total display area: **113 SF**

• 6th St. Total display area: **54 SF**

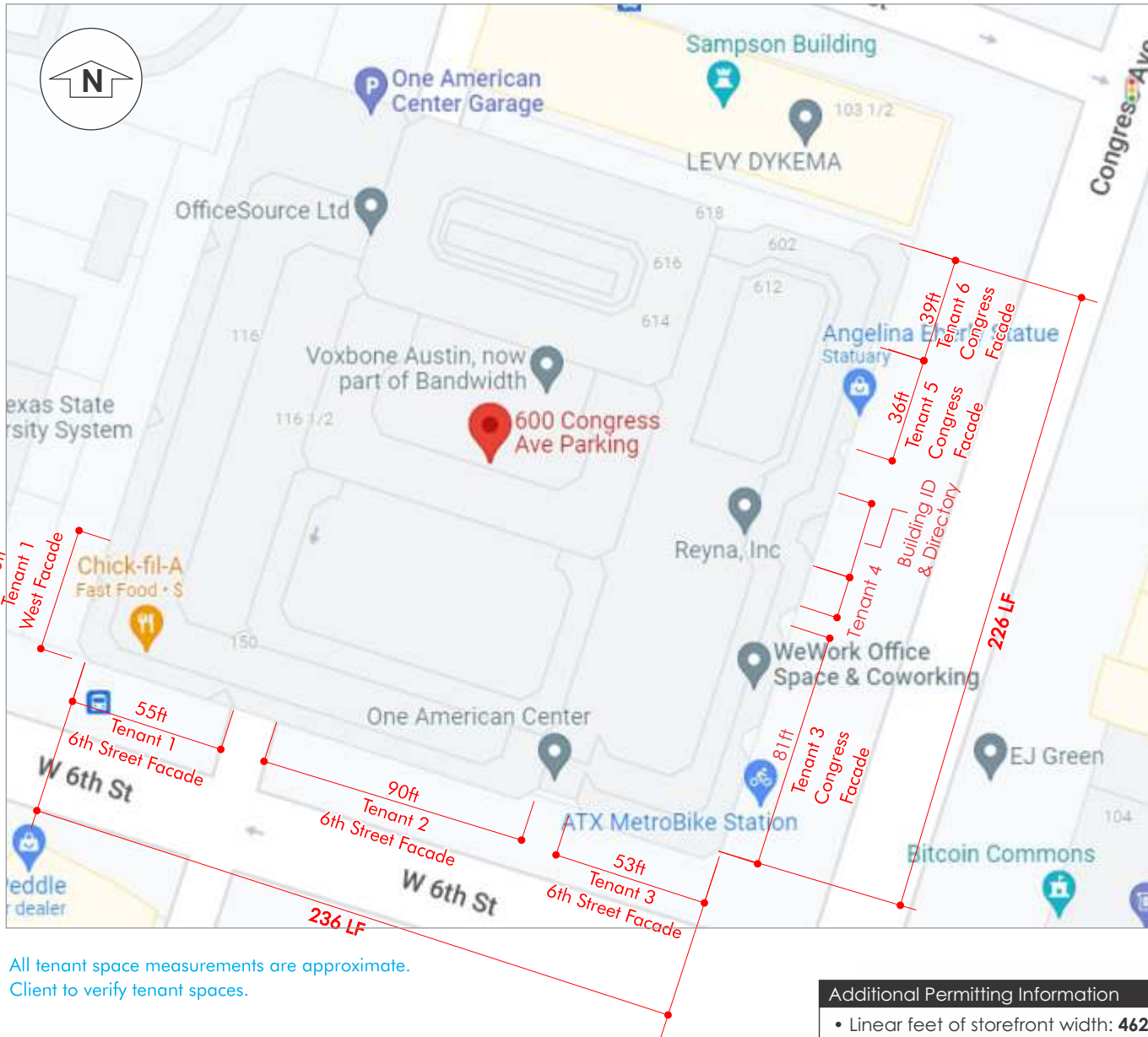
### • Non-illuminated Signs:

- Building directory wall sign (1x): total display area: **19 SF**  
- **4 Sq ft** per tenant panel (currently five tenants)

### • Installation:

- Awning sign height: 14' - 4" AF
- Building ID (awning sign) height: 19' - 0" AF
- Wall sign height:
  - Building Directory: 3' - 6" AF
  - Existing tenant: 14' - 2" AF
- (existing) Projecting sign height: 14' - 4" AF

• Property Address:  
600 Congress Ave,  
Austin, Texas 78701



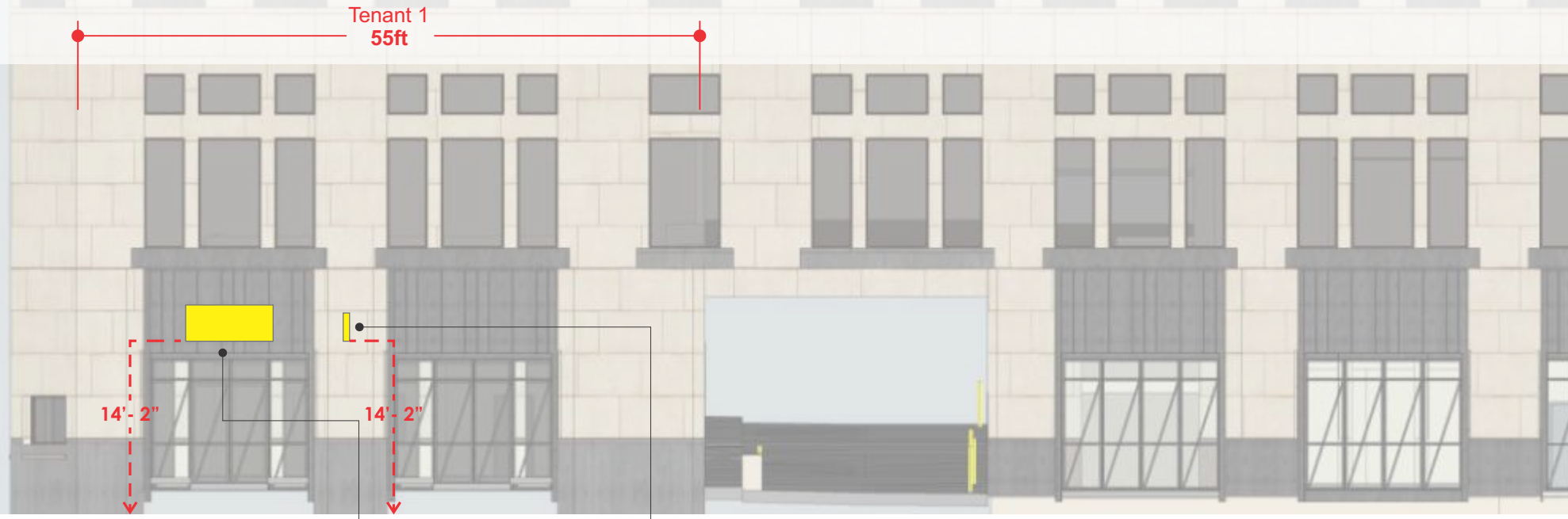
All tenant space measurements are approximate.  
Client to verify tenant spaces.

### Additional Permitting Information

- Linear feet of storefront width: **462ft - 0in** (226LF along Congress Ave.; 236LF along 6th St.)
- Electrical requirements:
  - Minimum of 1 dedicated 120V 20amp circuit, and J-box within 6ft of sign (per sign; to be installed by others).
- Setback of signs:
  - Wall sign: **18ft**

Sign illumination and fabrication overview

- Sign type:
  - Channel letters with a standoff on a contoured backer.
- Construction materials:
  - Aluminum and polycarbonate
- Finish:
  - Single, or 2-color Paint that harmonizes with the building's facade.
- Illumination:
  - Reverse ('halo') illumination for a soft glow effect



Tenant 1  
55ft

14'-2"

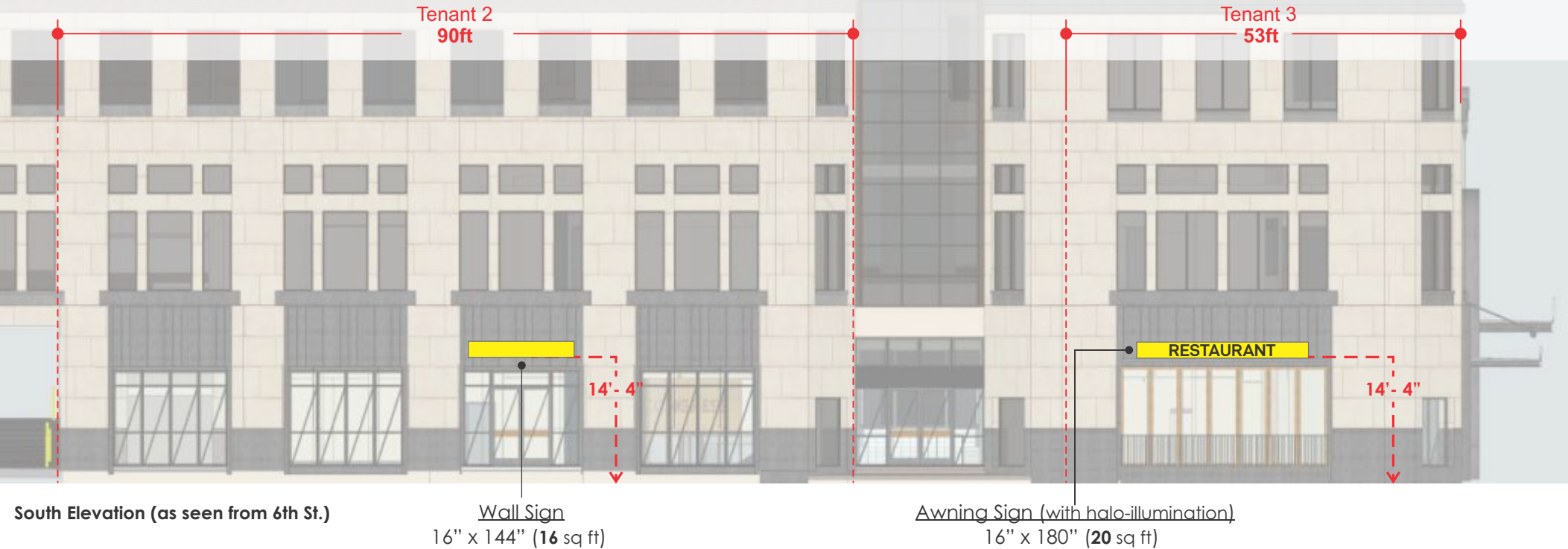
14'-2"

South Elevation (as seen from 6th St.) Wall Sign (existing)  
34" x 82" (12 sq ft)

Projecting Sign (existing)  
26.5" x 42" (6 sq ft)

Sign illumination and fabrication overview

- Sign type:
  - Channel letters with a standoff on a contoured backer.
- Construction materials:
  - Aluminum and polycarbonate
- Finish:
  - Single, or 2-color Paint that harmonizes with the building's facade.
- Illumination:
  - Reverse ('halo') illumination for a soft glow effect



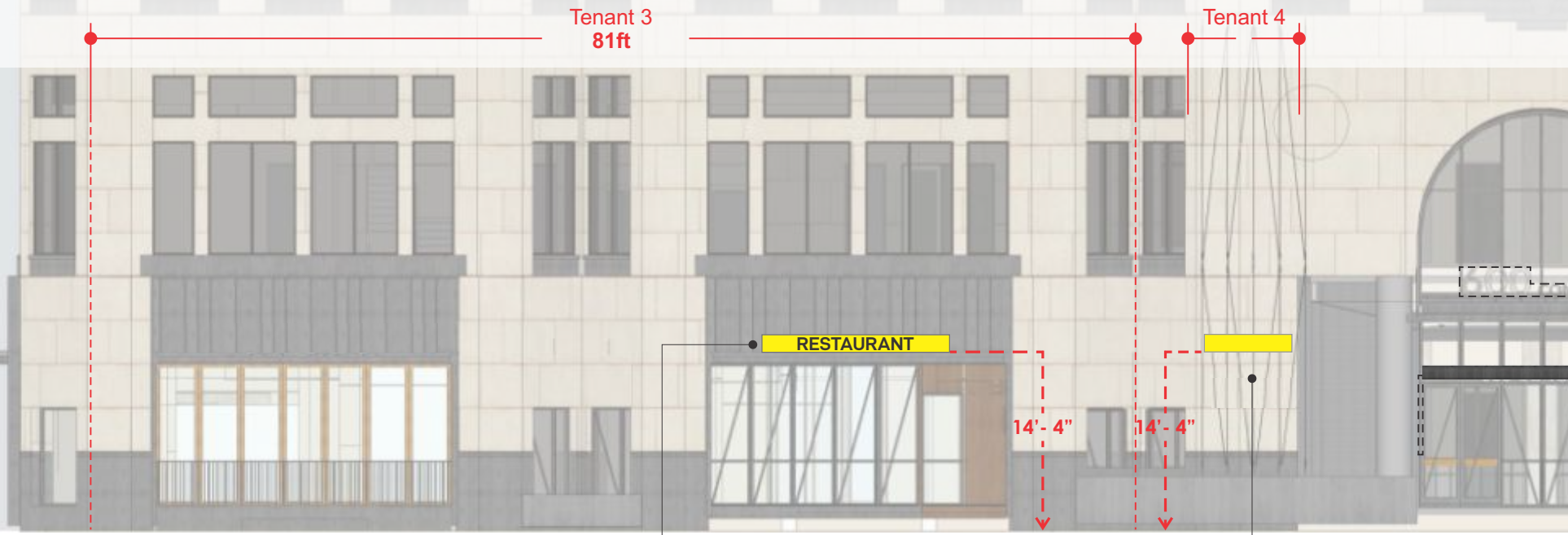
South Elevation (as seen from 6th St.)

Wall Sign  
16" x 144" (16 sq ft)

Awning Sign (with halo-illumination)  
16" x 180" (20 sq ft)

Sign illumination and fabrication overview

- Sign type:
  - Channel letters with a standoff on a contoured backer.
- Construction materials:
  - Aluminum and polycarbonate
- Finish:
  - Single, or 2-color Paint that harmonizes with the building's facade.
- Illumination:
  - Reverse ('halo') illumination for a soft glow effect



East Elevation (as seen from Congress Ave.)

Awning Sign (with halo-illumination)  
16" x 180" (20 sq ft)

Wall Sign  
16" x 72" (8 sq ft)

### Sign illumination and fabrication overview

- Sign type:
  - Channel letters with a standoff on a contoured backer.
- Construction materials:
  - Aluminum and polycarbonate
- Finish:
  - Single, or 2-color Paint that harmonizes with the building's facade.
- Illumination:
  - Reverse ('halo') illumination for a soft glow effect

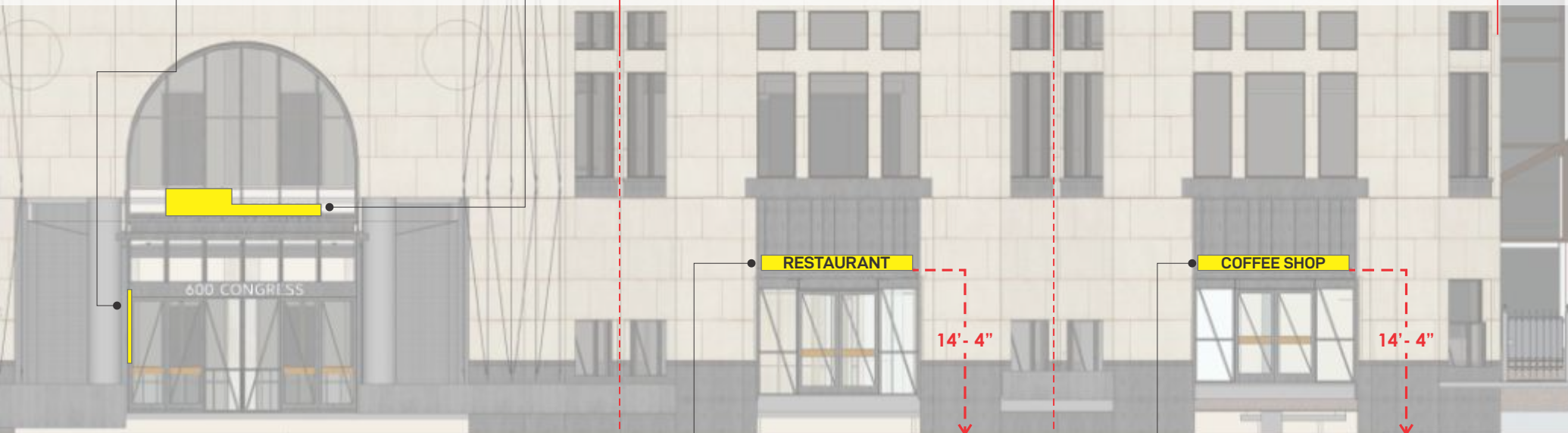


Building Directory Sign  
12" x 96" (8 sq ft)

Building ID Sign  
12" x 96" (8 sq ft)

Tenant 5  
36ft

Tenant 6  
39ft



RESTAURANT

COFFEE SHOP

14'- 4"

14'- 4"

East Elevation (as seen from Congress Ave.)

Awning Sign (with halo-illumination)  
16" x 156" (16 sq ft)

Awning Sign (with halo-illumination)  
16" x 156" (16 sq ft)