



CITY OF AUSTIN

---

# Heat Resilience Playbook

7/9/24

# Outline



01

Background

02

Components of the playbook

03

Climate Projections

04

Next Steps

# Heat Resilience Playbook

## Why have it?

Temperatures are rising

-----

Council is asking for it

-----

The Community wants to know

-----

The City and local agencies  
are doing a lot!

-----

Let's communicate the strategies  
currently underway

## What is it?

Heat Resilience Playbook identifies  
neighborhood-based and citywide  
projects, programs, and policies  
that combat extreme heat.

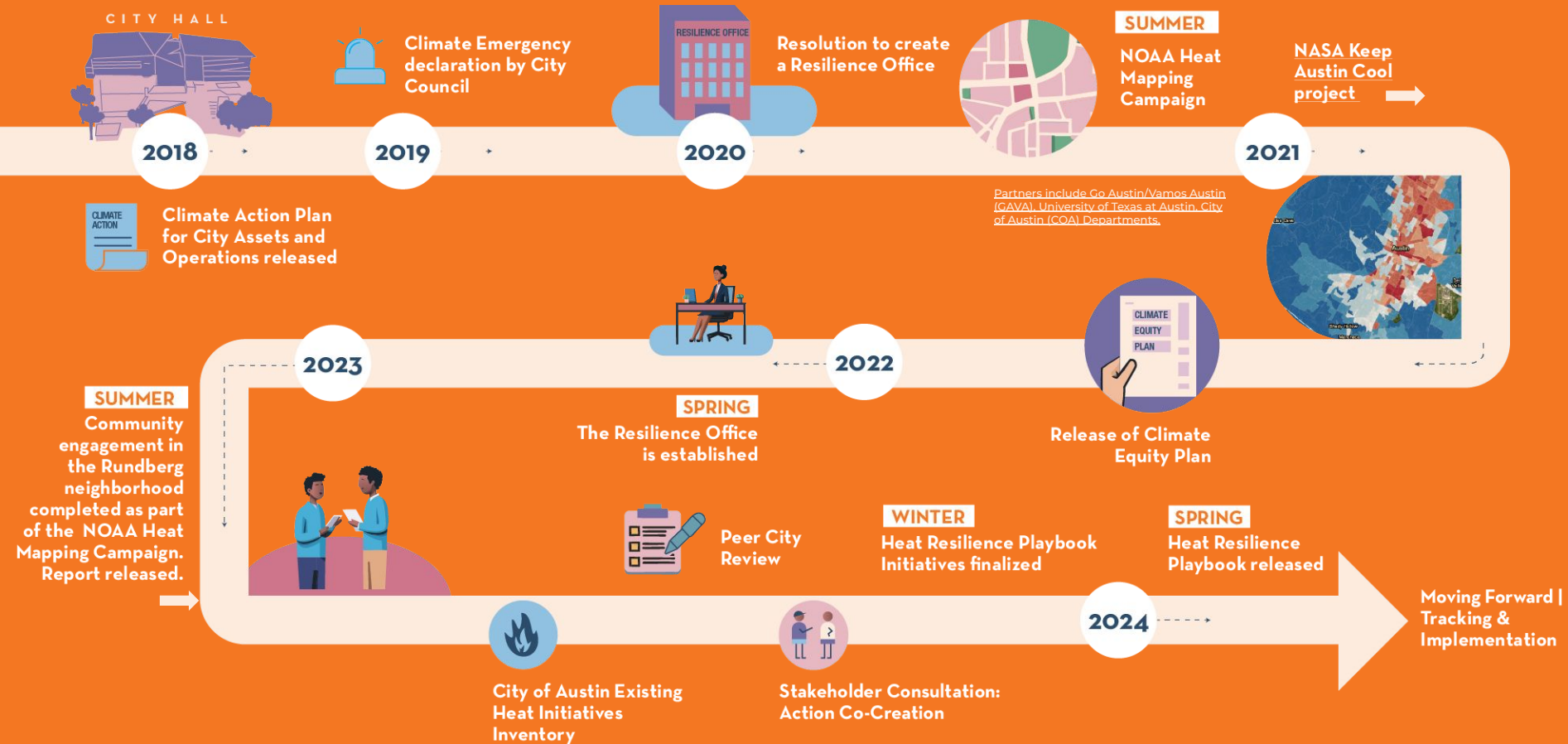
-----

This Playbook seeks to uplift  
existing City & agency-led heat  
resilience efforts

-----

It's not a plan  
No budget or timeline

# Heat Resilience Playbook Timeline





# Who We Worked With

- Austin Bergstrom International Airport
- Austin Energy
- Austin Energy Green Building
- Austin Public Health
- Austin Public Libraries
- Austin Water
- Cap Metro
- Development Services - Forestry

- Homeland Security & Emergency Management
- Homeless Strategy Office
- Housing
- Human Resource
- Parks and Recreation
- Planning
- Travis County
- Watershed Protection

# Steps

01

Reviewed national & internal best practices

02

Assessed how city, and agencies, compare to best practices.  
Id'd 70+ strategies COA+ currently pursuing

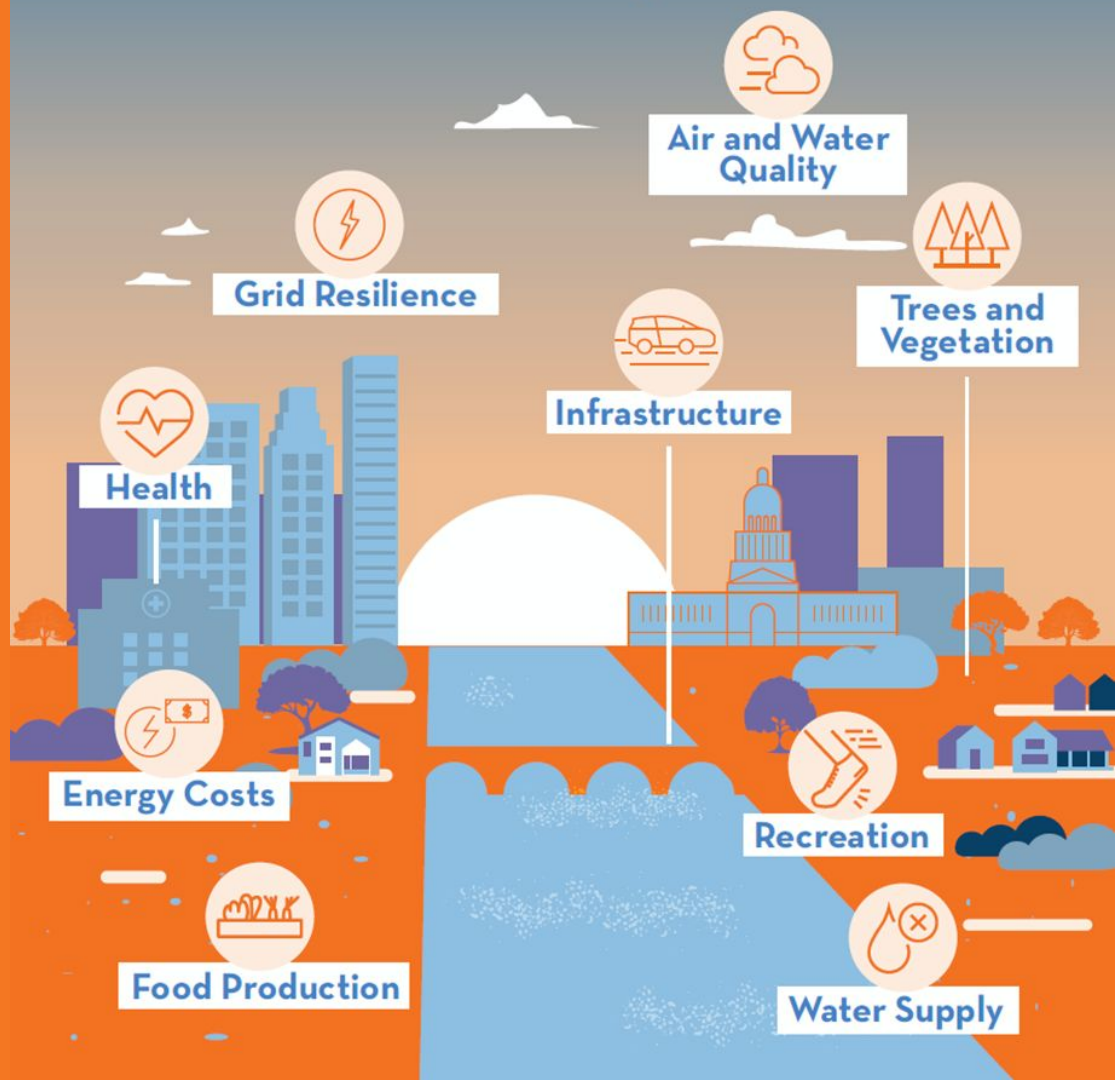
03

Reviewed findings with staff & drafted/ refined strategies

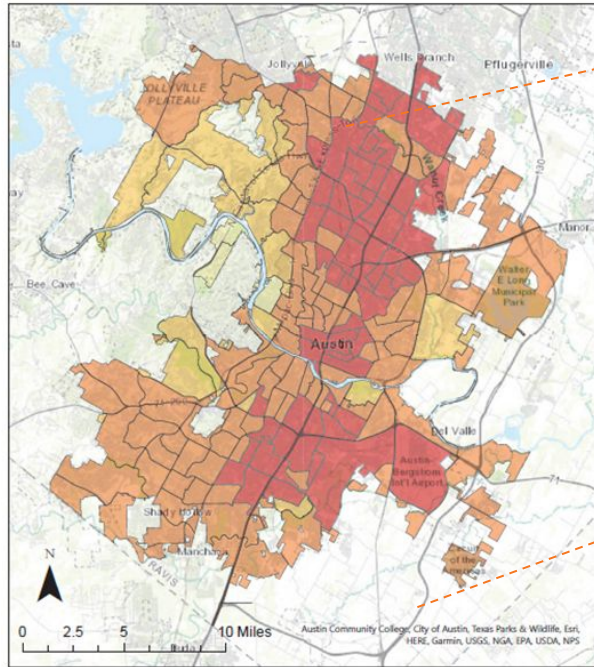
04

Assembled strategies into report

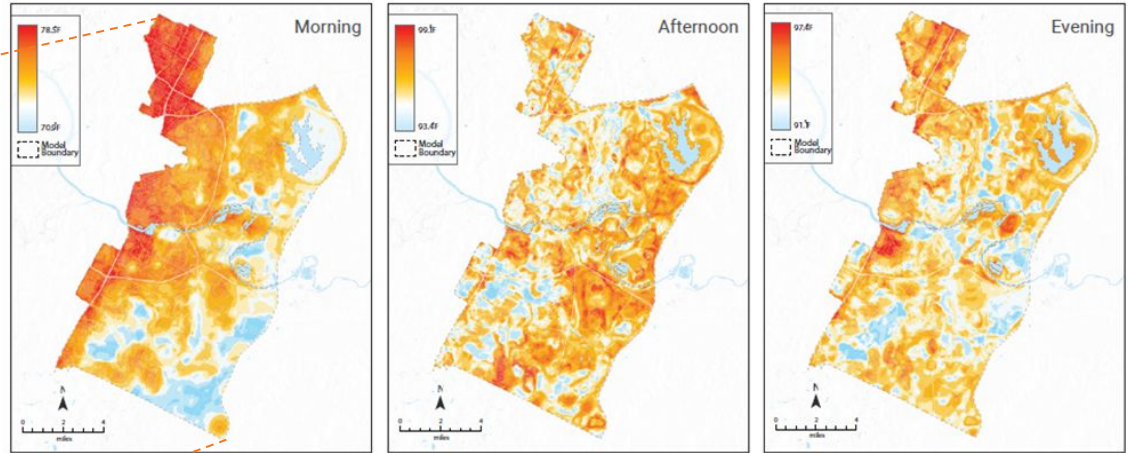
# Extreme Heat Impacts Our:



# AUSTIN'S HEAT EQUITY



Legend  
High Summer Average Land Surface Temperature (F)  
97 - 100  
101 - 104  
105 - 108  
109 - 112

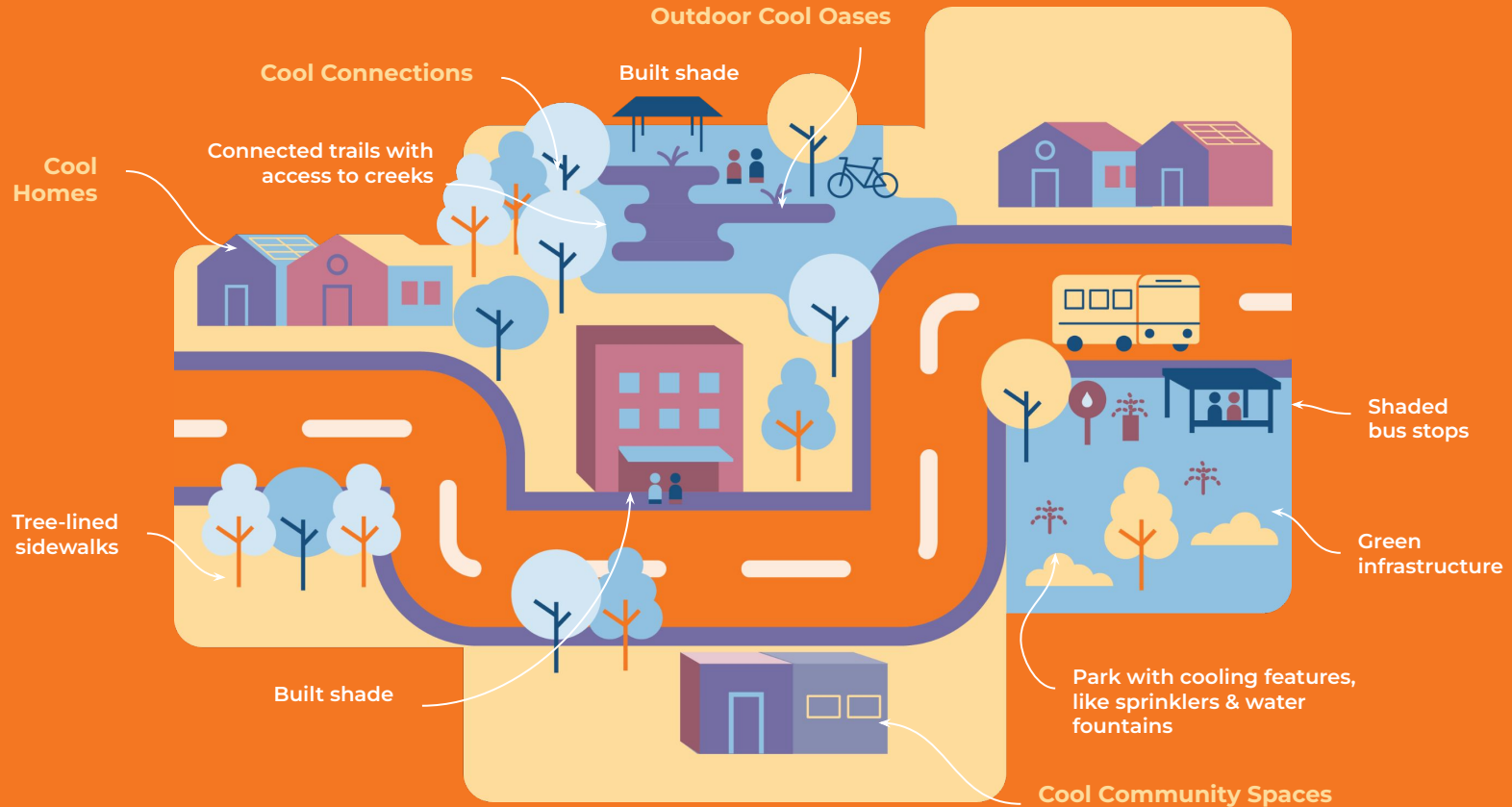


The maps above depict average area temperatures in Austin's Eastern Crescent at three distinct points of the day — morning, afternoon, and evening — to understand the differences in feels like temperatures throughout the day and begin to uncover associated challenges by neighborhood.

When there are major heat events, our residents who are **most vulnerable feel it the worst**. While all of Austin is expected to experience increases in extreme heat, not all residents face the same impacts. **People with the least amount of resources or who spend time outdoors are most at risk** — including outdoor workers, infants, elderly, incarcerated people, individuals experiencing homelessness, low-income communities, and people with chronic or mental illness.



# Spotlight on Neighborhood Cooling



# Austin's Heat Resilience Playbook is Composed of 3 Pillars, Divided into 13 Strategies and 56 Actions



## 1 Support Healthy and Prepared Austinites

- 1.1 Heat Risk and Mitigation Communications
- 1.2 Enhanced Outreach During Extreme Heat
- 1.3 Safety Measures and Policies
- 1.4 Data and Evaluation



## 2 Prioritize Cooling Investments and Programming in High-Heat Neighborhoods

- 2.1 Cool Homes
- 2.2 Cool Community Spaces
- 2.3 Outdoor Cool Oases
- 2.4 Cool Connections



## 3 Enhance the Capacity of Our Infrastructure and Ecology to Adapt to the Impacts of Extreme Heat

- 3.1 Cool Buildings
- 3.2 Tree Planting and Maintenance
- 3.3 Parks and Green Space
- 3.4 Resilient Energy System
- 3.5 Heat Resilience Planning

# Support Healthy and Prepared Austinites



## 1

### Support Healthy and Prepared Austinites

- 1.1 Heat Risk and Mitigation Communications

---
- 1.2 Enhanced Outreach During Extreme Heat

---
- 1.3 Safety Measures and Policies

---
- 1.4 Data and Evaluation

# Support Healthy and Prepared Austinites

## 1.1 HEAT RISK AND MITIGATION COMMUNICATIONS

Advance inclusive and effective communications methods to educate and empower Austinites around extreme heat risk

**Champions:** AUSTIN PUBLIC HEALTH, AUSTIN PUBLIC LIBRARY, CAPMETRO, HOMELAND SECURITY & EMERGENCY MANAGEMENT, HOMELESS STRATEGY OFFICE, OFFICE OF RESILIENCE, PARKS AND RECREATION, TRAVIS COUNTY

## 1.2 ENHANCED OUTREACH DURING EXTREME HEAT

Support Austinites through enhanced outreach programming, especially those disproportionately impacted by heat

**Champions:** AUSTIN PUBLIC HEALTH, HOMELESS STRATEGY OFFICE

## 1.3 SAFETY MEASURES AND POLICIES

Promote safety measures and explore new policies that support safety during an extreme heat event

**Champions:** HUMAN RESOURCES

## 1.4 DATA AND EVALUATION

Support continuous learning and decision-making through heat dashboards, maps, and indices

**Champions:** AUSTIN PUBLIC HEALTH, OFFICE OF RESILIENCE, PLANNING, UNIVERSITY OF TEXAS AT AUSTIN

# Prioritize Cooling Investments and Programming in High-Heat Neighborhoods



## 2

### Prioritize Cooling Investments and Programming in High-Heat Neighborhoods

- 2.1 Cool Homes
- 2.2 Cool Community Spaces
- 2.3 Outdoor Cool Oases
- 2.4 Cool Connections



# Prioritize Cooling Investments and Programming in High-Heat Neighborhoods

## 2.1 COOL HOMES

Promote and support strategies that keep Austinites cool in their homes

**Champions:** AUSTIN ENERGY GREEN BUILDING, DEVELOPMENT SERVICES, HOUSING, OFFICE OF RESILIENCE

## 2.2 COOL COMMUNITY SPACES

Increase cooling in indoor community spaces

**Champions:** AUSTIN PUBLIC HEALTH, AUSTIN PUBLIC LIBRARY, OFFICE OF RESILIENCE, PARKS AND RECREATION

## 2.3 OUTDOOR COOL OASES

Pilot cooling innovations and programming in outdoor spaces within neighborhoods disproportionately impacted by heat

**Champions:** AUSTIN WATER, CAPMETRO, OFFICE OF RESILIENCE, PARKS AND RECREATION, DEVELOPMENT SERVICES, PLANNING

## 2.4 COOL CONNECTIONS

Pilot connecting cooling interventions in extreme heat neighborhoods to ensure high-heat neighborhoods to receive the maximum benefit from cooling

**Champions:** AUSTIN TRANSIT PARTNERSHIP, CAPMETRO, DEVELOPMENT SERVICES, PLANNING, TRANSPORTATION AND PUBLIC WORKS

# Enhance the Capacity of Our Infrastructure and Ecology To Adapt To The Impacts Of Extreme Heat



## 3

### Enhance the Capacity of Our Infrastructure and Ecology to Adapt to the Impacts of Extreme Heat

- 3.1 Cool Buildings
- 3.2 Tree Planting and Maintenance
- 3.3 Parks and Green Space
- 3.4 Resilient Energy System
- 3.5 Heat Resilience Planning

# Enhance the Capacity of Our Infrastructure and Ecology To Adapt To The Impacts Of Extreme Heat

## 3.1 COOL BUILDINGS

**Design for, incentivize, and codify heat resilience building across Austin**

**Champions:** AUSTIN ENERGY GREEN BUILDING, DEVELOPMENT SERVICES, HOUSING, OFFICE OF RESILIENCE, PLANNING, WATERSHED PROTECTION

## 3.2 TREE PLANTING AND MAINTENANCE

**Advance the City's 50% tree canopy goal by protecting existing and planting new trees**

**Champions:** DEVELOPMENT SERVICES, PARKS AND RECREATION, TRANSPORTATION AND PUBLIC WORKS, TRAVIS COUNTY, WATERSHED PROTECTION

## 3.3 PARKS AND GREEN SPACE

**Design parks and transform underutilized spaces for expanded greening and cooling**

**Champions:** AUSTIN ENERGY, AUSTIN WATER, DEVELOPMENT SERVICES, FINANCIAL SERVICES, OFFICE OF INNOVATION, OFFICE OF RESILIENCE, OFFICE OF SUSTAINABILITY, PARKS AND RECREATION, PLANNING, WATERSHED PROTECTION

## 3.4 RESILIENT ENERGY SYSTEM

**Ensure clean, redundant, and reliable energy systems**

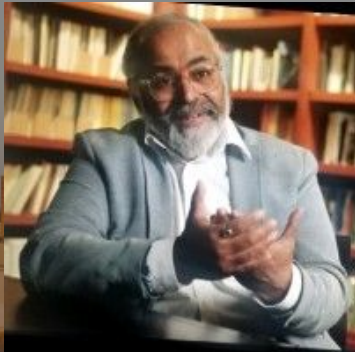
**Champions:** AUSTIN ENERGY, OFFICE OF RESILIENCE, PARKS AND RECREATION

## 3.5 HEAT RESILIENCE PLANNING

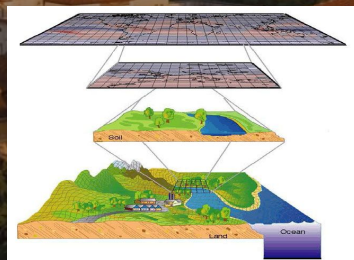
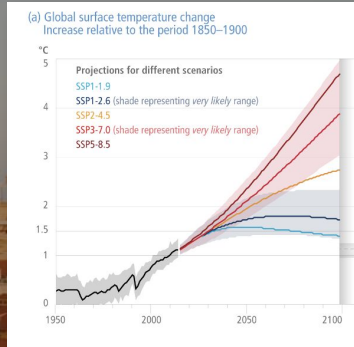
**Integrate heat resilience across City projects and plans**

**Champions:** AVIATION, OFFICE OF RESILIENCE, OFFICE OF SUSTAINABILITY, TRANSPORTATION AND PUBLIC WORKS,

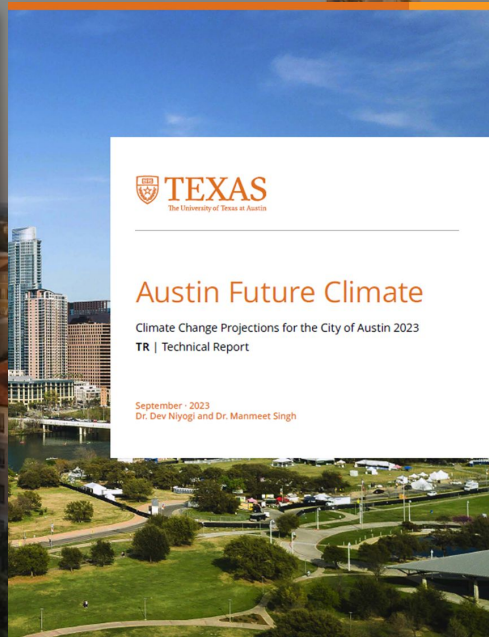
# UT City + Climate Colab



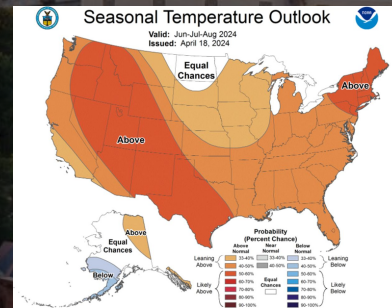
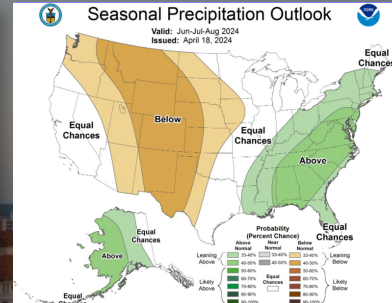
Dr. Dev Niyogi



Research



Climate Projections



Seasonal Outlook



A person wearing blue and white patterned swim trunks with red and black accents is walking barefoot on a metal pool deck. The background shows a swimming pool with blue lane lines and a blurred building. The text 'CITY OF AUSTIN' is overlaid in white, with an orange horizontal line underneath it.

CITY OF AUSTIN

THANK YOU!