



TRANSPORTATION
PUBLIC WORKS

Downtown Commission
August 21, 2024

OUR FUTURE 35

The Opportunity

Our Future 35 will provide transformational new infrastructure for Austin that is of regional and national significance

- TxDOT project lowering the main lanes allows the City to deck over the highway
- Up to 30 acres of new urban real estate
- Local enhancement can provide an array of community benefits and change the landscape of Austin



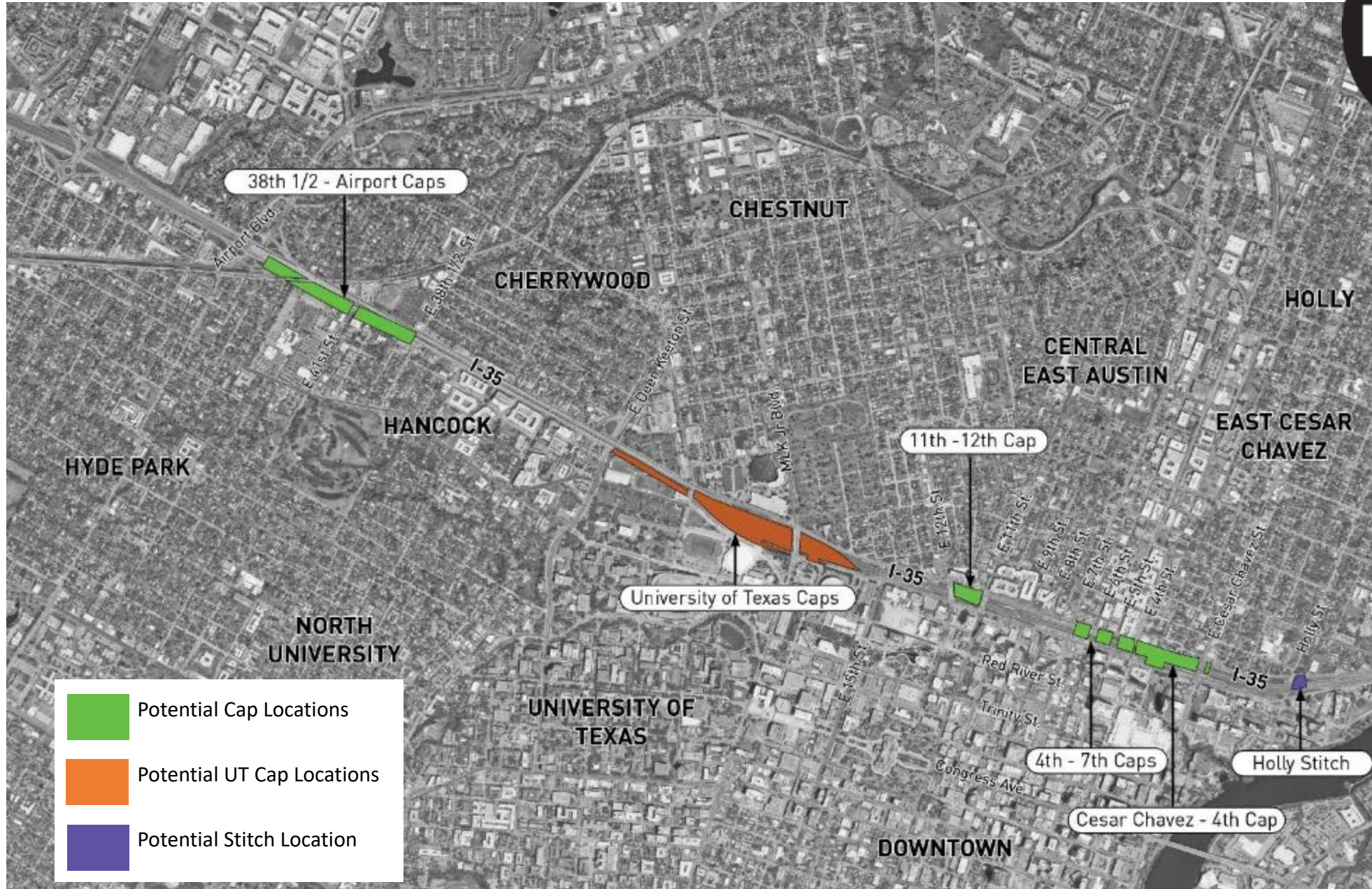
IMAGE:
Klyde Warren Park, Dallas

POTENTIAL BENEFITS OF FREEWAY CAPS

- Reconnect East and West Austin
- Change the landscape of Central Austin
- Create signature new public space for citywide use
- Make walking and biking across and along I-35 safer and more comfortable
- Support / incubate local businesses
- Provide space for arts and culture
- Address local noise and air quality concerns



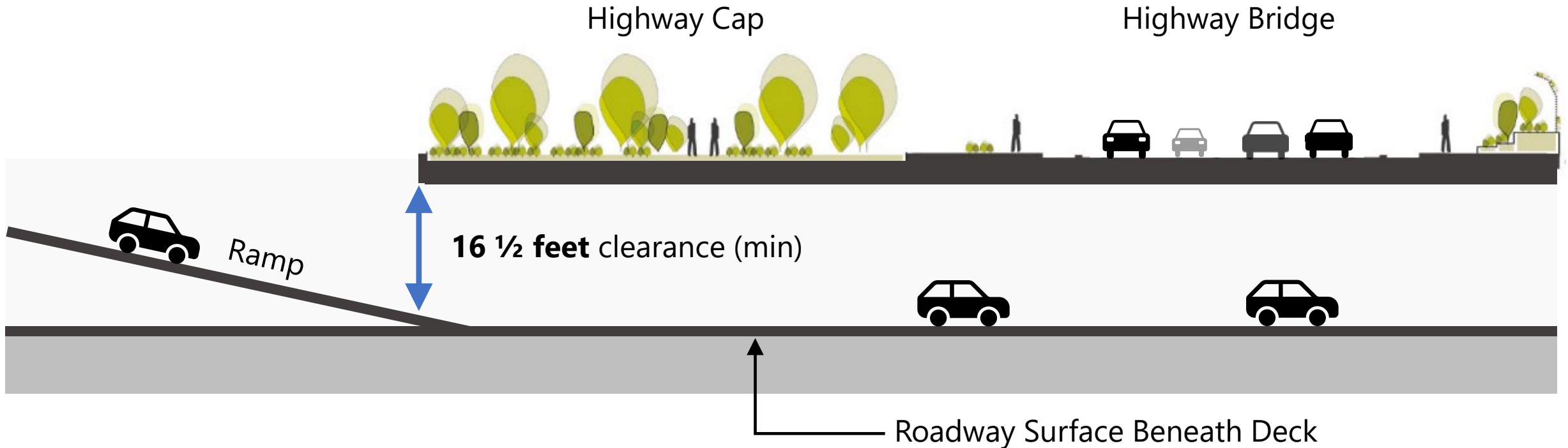
CAP AND STITCH OVERVIEW



WHERE ARE CAPS POSSIBLE?

Height Clearances

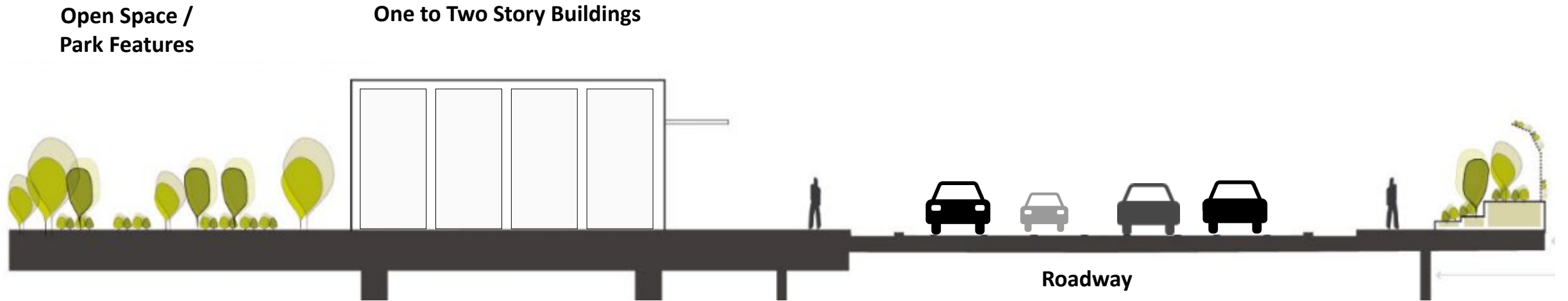
The image below shows a cross section through a highway cap. The cap needs to have at least 16 ½ feet height clearance above the roadway and any ramps or structures.



WHAT IS POSSIBLE ON TOP OF CAPS?

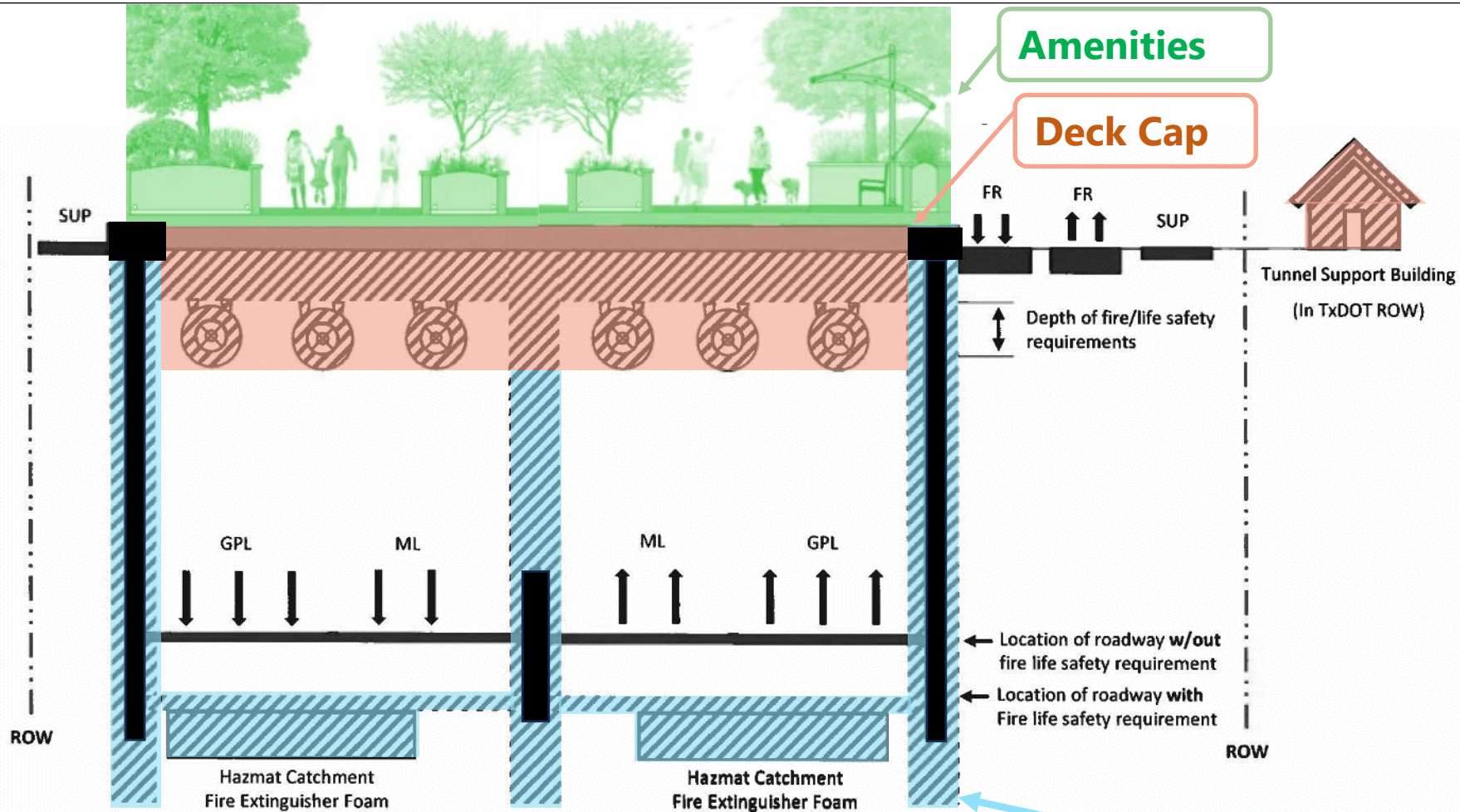
Maximum Building Heights

- Buildings may be 1-2 stories max.
- Buildings 3 stories or higher would require additional engineering and cost (unlikely to be feasible).



CAP & STITCH COMPONENTS

Roadway Elements + Tunnel Elements and Cap + Amenities



- COA-Funded Roadway Elements
- COA-Funded Deck Structures
- COA-Funded Amenities

Roadway Elements - Preserves the opportunity to build Caps and Amenities in the future.

FUNDING STATUS

(All Costs = 2024 Dollars)

			Decision by Dec 2024	Decision by Dec 2026	Concept Decision by Dec 2024, Final Layout by 2032+	Recurring Annually 2032+		
		Structural Design Costs	Roadway Elements Costs	Deck Costs	Amenity Costs		O&M Costs	
Acres		(\$M)	(\$M)	(\$M)	Design (\$M)	Construction (\$M)	Structure (\$M)	Amenities (\$M)
Holly Stitch	1.05	\$34	\$9	-	\$1	\$13	\$1	\$1
CC South Extension	0.23		\$5	-	\$1	\$3m	\$0.5	\$0.5
CC-4th*	5.28		\$30*	\$69*	\$6*	\$66*	\$3	\$7
4 th -7 th	3.72		\$26	\$49	\$4	\$47	\$3	\$5
11 th -12 th	2.10		\$15	\$28	\$2	\$26	\$1.5	\$3.5
38 th -41 st	5.21		\$37	\$70	\$6	\$65	\$3	\$7
41 st -Red Line	4.76		\$33	\$65	\$5	\$60	\$2	\$6
Red Line-Airport	2.74		\$19	\$37	\$3	\$34	\$1	\$4
Total Need		\$34	\$174	\$318	\$28	\$314	\$15	\$34
Funding Secured		\$15	\$30*	\$69*	-	\$6m*		
Remaining Need		\$19	\$144	\$249	\$28	\$308		

* Received \$105 Million Neighborhood Access and Equity Federal grant for CC-4th Structures (Roadway Elements + Deck Costs).

* \$45 Million grant match required from City for CC-4th Amenities

WHERE ARE WE NOW?



The City is determining what the approximate uses and amenities are for each cap, so TxDOT can engineer the structural loads to support activity on top of each cap.

The public is being asked for their preliminary preferences on how to use the caps, and the percent of green space to buildings for each cap.

YOUR INPUT



Provide comment on Vision and Goals



Preferred Amenity Balance on Each Cap



Preferred Amenity Types on Each Cap



WHAT WE'LL DO NEXT



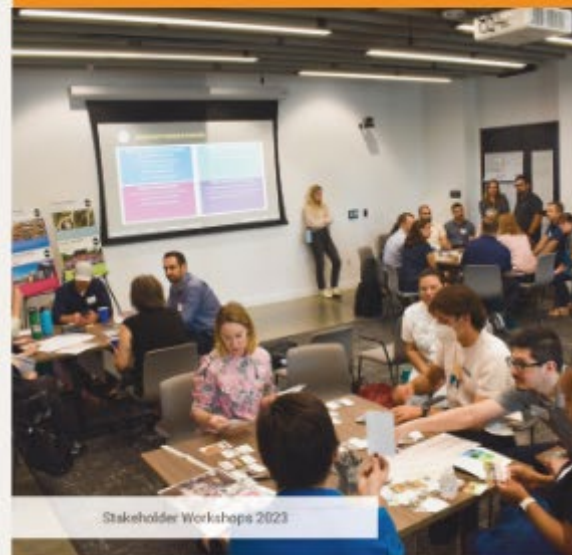
Develop Design Strategies in Alignment with the Vision and Goals



Determine "Loading Zones" for the Cap Structures that Will Approximately Accommodate Requested Amenity Weights



Refine Concept Plans in Alignment with Feedback



CURRENT WORK

What is a Vision Plan?



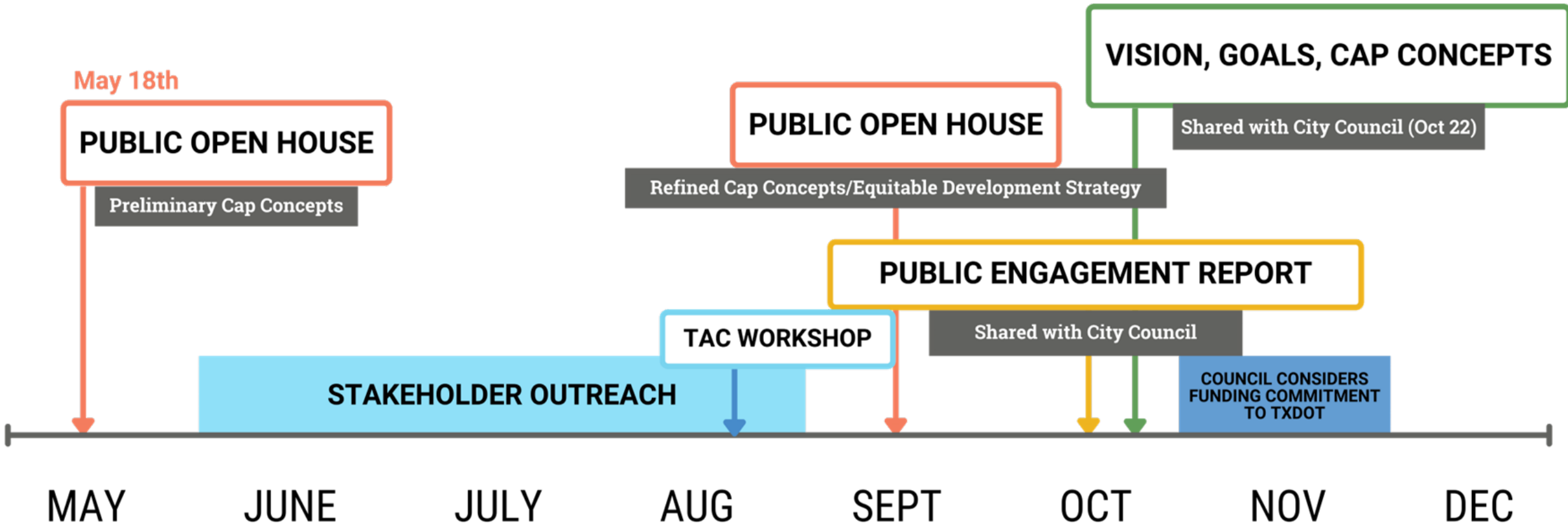
- The Our Future 35 Vision Plan will document the community's desired outcomes for freeway caps in Austin
- The Vision Plan will be used to guide decision-making as detailed designs are created for cap amenities in the future.
- It will include:
 - Vision statement
 - Project goals
 - Preliminary concepts for cap amenities (Full-build)

CURRENT WORK

Vision Plan Engagement



2024 VISION PLAN TIMELINE



DRAFT VISION AND GOALS

VISION STATEMENT:

New shared public spaces over I-35 are inclusive and sustainable; support economic opportunity and equity; celebrate heritage and cultural narratives; support community health and restorative natural spaces; encourage environmental stewardship; and promote safe and comfortable access to all citizens.



Equity & Inclusivity

Engage community members who have been impacted by and excluded from past infrastructure decisions, and ensure that new amenities are dynamic, sustainable, and welcome communities of all races and identities.



Health & Human Nature

Create spaces that enhance the quality of life and well-being of users, encourage active transportation, employ native and adapted resilient and restorative landscapes, and promote connection to nature.



Economic Affordability & Vitality

Foster design elements and activations for small and local businesses, and mitigate displacement and adverse cost of living impacts of the project on surrounding neighborhoods and communities of color.



Environmental Sustainability

Advance the Austin community's commitment to environmental stewardship, recognize broader climate action imperatives, and build the capacity to successfully maintain and adapt these spaces.



Community & Cultural Narratives

Celebrate the historical and cultural fabric of past and present communities surrounding I-35 while recognizing the city and highway's histories of fracture, and collect and amplify the narratives and histories of community members.



Safety & Accessibility

Connect community members to jobs, services, and each other and promote safe and comfortable hubs that provide access to, from, and across I-35, and foster modes of travel that welcome and support all ages and abilities.

SUMMER OUTREACH

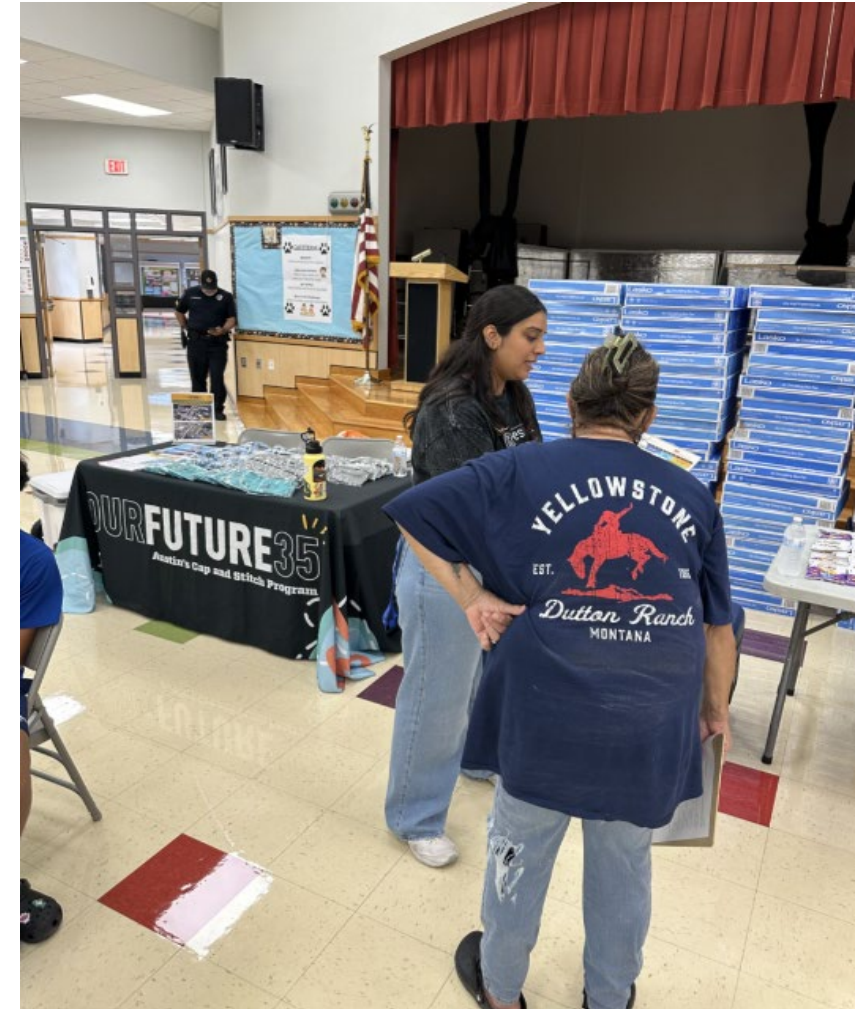
What effort was made to engage community?



The Our Future 35 survey was open from **May 10th-August 2nd, 2024**.
In total, we received **1,783 responses**.

To encourage survey uptake, the Our Future 35 team:

- Completed a total of **32** information tables and/or presentations at:
 - Recreation and Senior Centers
 - Neighborhood Pools and Associations
 - Community Events
- Posted **27 Share Your Voice Flyers** at local businesses and COA Centers.
- Sent Postcards using a targeted mailing strategy
- Promoted the survey through Facebook and Instagram
- Printed ads in El Mundo and the Villager
- Utilized paid ads in Univision
- Participated in news interviews and podcasts (KUT, Inside Austin)



WHAT'S NEXT?



- Ongoing COA/TxDOT Technical Coordination – May-Sept 2024
- Stakeholder outreach – June-August 2024
 - External Stakeholder Workshops in August 2024
 - Internal City Workshops, August 23, 2024
- Open House #2 with updated Cap Amenity Concepts– September 28, 2024
- Cesar Chavez – 4th Street Cap Design - 2025

Upcoming Work

Connecting Austin Equitably Mobility Study



Equitable Multimodal Mobility & Access to Transit

- Gap Analysis
- User Experience Analysis
- Existing Conditions Analysis
- Project Identification, planning, and Prioritization

Environmental Justice

- Air Quality
- Heat Island Impact
- Noise Pollution

MOVING FORWARD:

When can I see an updated concept?



OUR FUTURE 35
Austin's Cap and Stitch Project

ALL ARE WELCOME

The City of Austin invites you to an Open House to see updated concepts of green spaces and facilities on caps over I-35 in central Austin.

Saturday, September 28
10:00am - 2:00pm

Canopy Austin
916 Springdale Rd.



The community-driven concepts will be presented to the City Council with funding options **this fall**.
For more details visit www.OurFuture35.com

OUR FUTURE 35

WWW.OURFUTURE35.COM



OurFuture35@austintexas.gov



[/ATXmobility](https://www.facebook.com/ATXmobility)



[@AustinMobility](https://twitter.com/AustinMobility)