



# Pathways to Health Equity

*Addressing Needs Today & Building a  
Healthier Tomorrow*

**ANDREW LEVACK**  
*Senior Program Officer*

**September 11, 2024**



# Strategic Vision and Direction



## Vision *for Central Texas*

A vibrant and inclusive community in which every individual can flourish and reach their full potential.



## Mission *for the Foundation*

To advance health equity in Central Texas through investment and action.



## Core Values

- Collaboration
- Community
- Compassion
- Innovation
- Stewardship



## Guiding Principles

- Listen, learn and evolve
- Use an equity lens in our work
- Embrace effective risk-taking
- Make data-driven decisions aligned with evidence, strategy, and community voice
- Measure outcomes and strive for high-impact work



## Strategy

We focus on removing barriers to better living **today** and changing systems and conditions to improve outcomes for a healthier community **tomorrow**.

# How We Impact Our Community



**Grantmaking**



**Mobile Dental  
Program**



**Scholarship  
Programs**



**Communications**



**Learning &  
Evaluation**

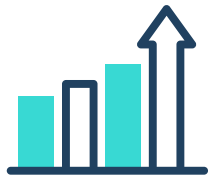
# What Guides Our Work

## Community Health Needs Assessment (CHNA)

As elements of the assessments and data are nearly identical, groups are encouraged to collaborate and utilize existing reports as appropriate.



# 2022 CHNA Overarching Themes Impacting Health Outcomes



**Population explosion and rising cost of living**



**Economic stability and non-medical drivers of health**



**Behavioral health, stress, and well-being**



**Access and affordability of healthcare**



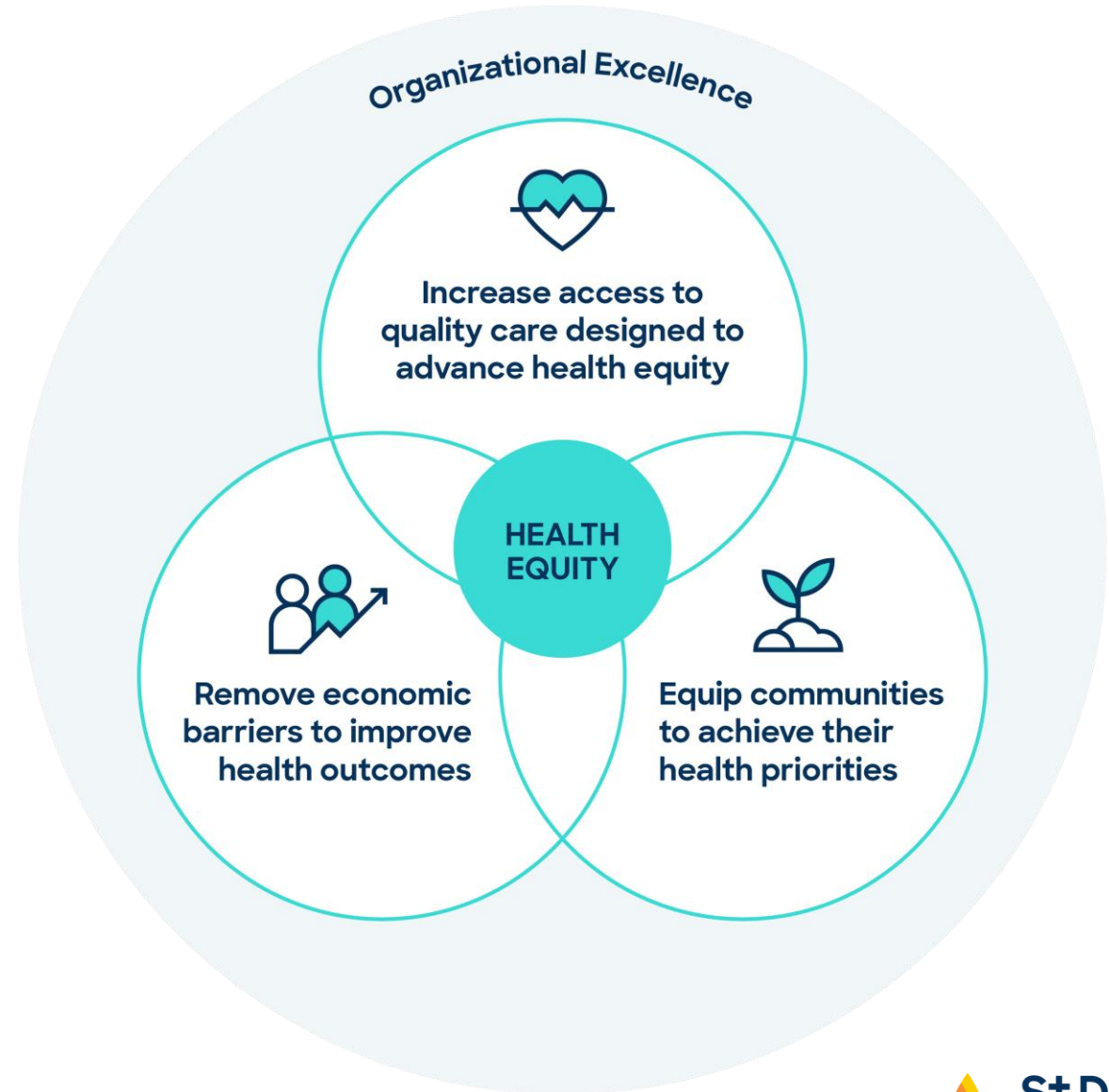
**Impact of racism and discrimination**

2024 - 2030

# Pathways to Health Equity

**Centering on Health Equity**, we focus on removing barriers to better living **today** and changing systems and conditions to improve outcomes for a healthier community **tomorrow**.

*Scan here to view our Strategic Plan:*



# Aspirational Ways to *Change our Work as a Foundation*

1. Focus more of our investments and action in **communities with the greatest health needs in our geography**, and acknowledging that some of these communities are also the populations and places which the Foundation knows the least;
2. Increase our focus on **upstream** efforts;
3. Be more **collaborative, connected, responsive, and region-wide**;
4. Involve deeper **community engagement**;
5. Use of a **wider variety of tools** to create meaningful change;
6. Operate as a **unified foundation** with alignment on shared goals, processes that support greater connectivity, and culture change.

# Trust-Based Philanthropy

## What does it look like in practice:

- **Unrestricted Funding:** general operating support rather than project-specific grants, allowing grantees to be flexible.
- **Multi-year Support:** Offering longer term funding commitments to provide stability and enable strategic planning for grantees.
- **Streamlined Processes:** Simplifying application and reporting requirements to save grantees' resources.
- **Genuine Communication:** Being open about decision-making processes, expectations, and learning to build trust and partnership.
- **Inclusion:** Committing to inclusive practices that support the voices and leadership of marginalized communities.



# Grantmaking in 2024

Evolving our  
grantmaking by offering  
**open funding  
opportunities** for  
greater impact and a  
more equitable  
application process

## New Funding Initiatives

### June

**Community Driven Change \$10M**

**We All Benefit \$8M**

### August

**Housing + Health \$8M**

**Community-Directed Giving Through  
Intermediaries \$4M**