

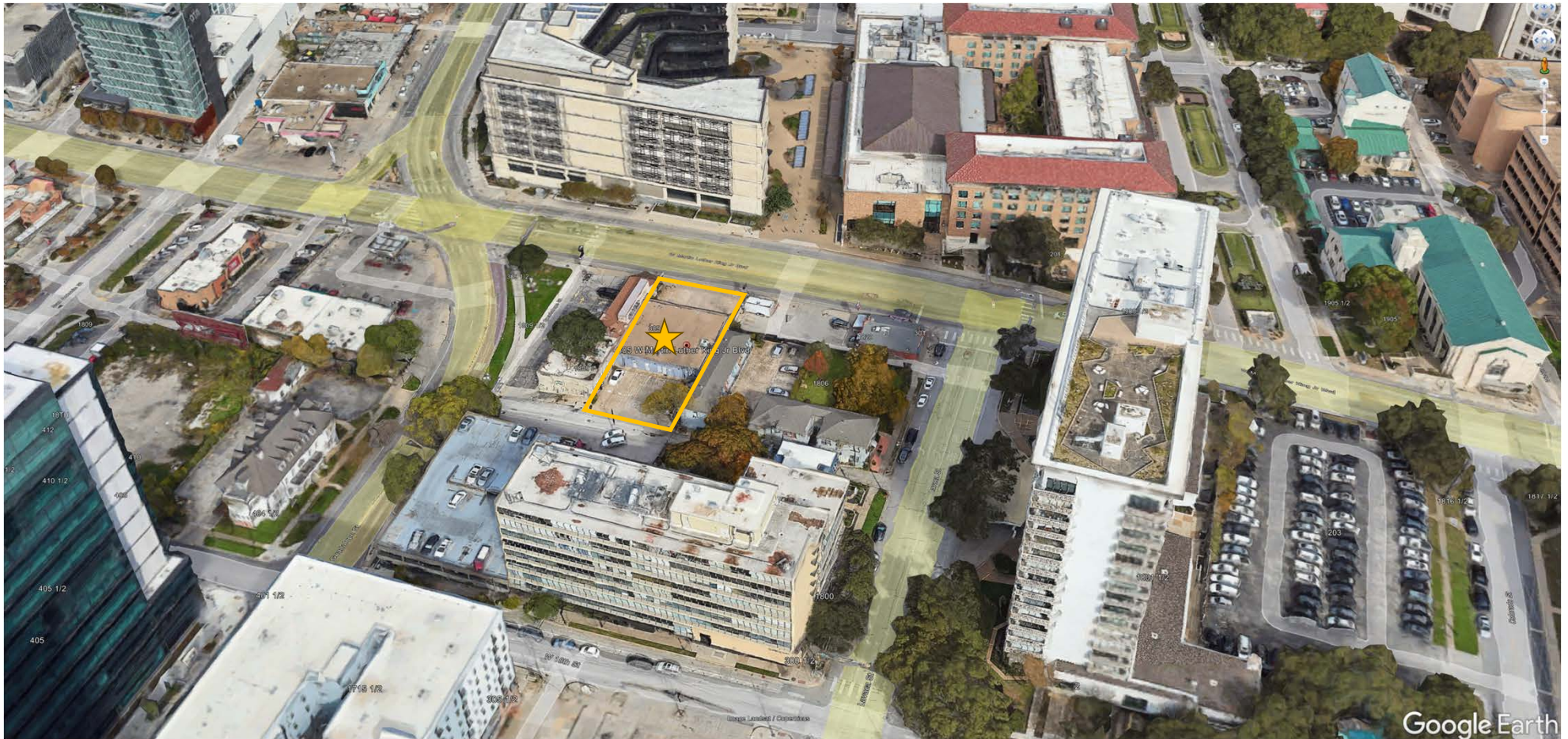


305 W MLK
0.237 acres / 10,344
69ft x 150ft

Home2 – SP-2024-0238C – 305 W Martin Luther King Jr. Blvd

City of Austin – Design Commission – October 28, 2024

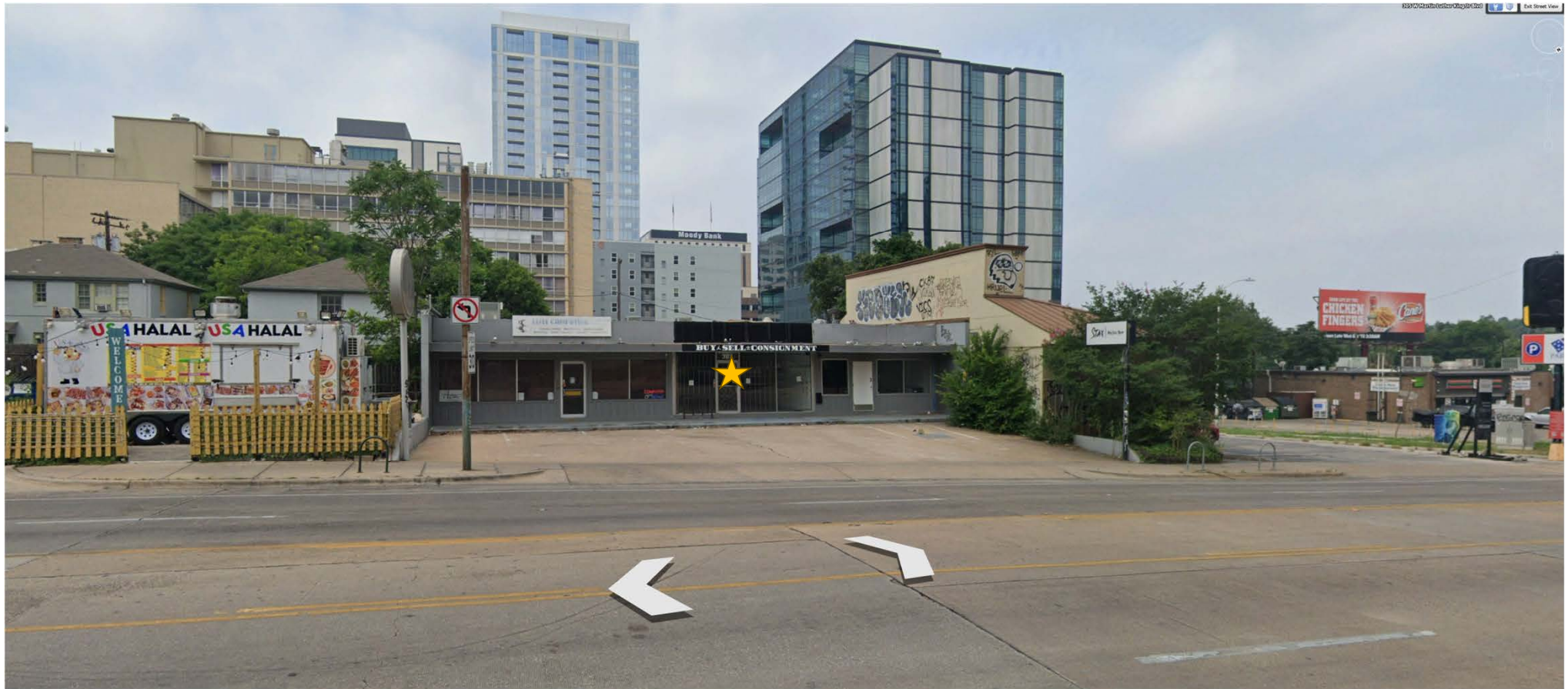




Home2 – SP-2024-0238C – 305 W Martin Luther King Jr. Blvd

City of Austin – Design Commission – October 28, 2024





Home2 – SP-2024-0238C – 305 W Martin Luther King Jr. Blvd

City of Austin – Design Commission – October 28, 2024

Throuwer Design
LAND PLANNERS



Home2 – SP-2024-0238C – 305 W Martin Luther King Jr. Blvd

City of Austin – Design Commission – October 28, 2024

Throuwer Design
LAND PLANNERS



Home2 – SP-2024-0238C – 305 W Martin Luther King Jr. Blvd

City of Austin – Design Commission – October 28, 2024

Throuwer Design^{LLC}
LAND PLANNERS

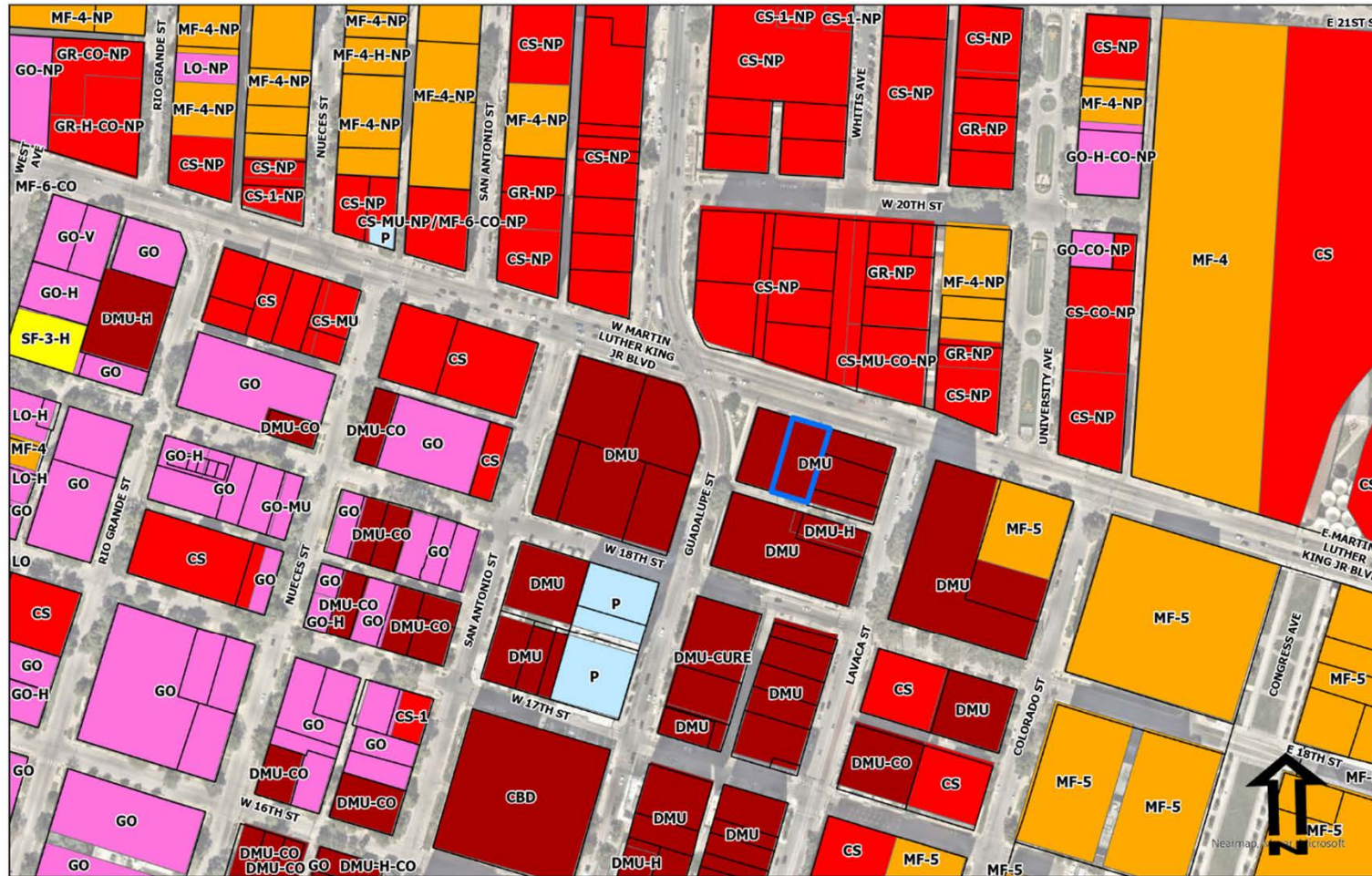


Home2 – SP-2024-0238C – 305 W Martin Luther King Jr. Blvd

City of Austin – Design Commission – October 28, 2024

Throuwer Design
LAND PLANNERS

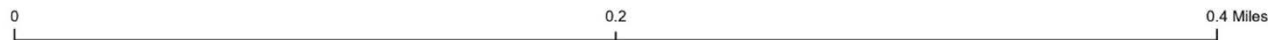
Zoning



305 W MLK Blvd.

Zoning District

- Mobile Home Residence
- Commercial
- Office
- Industrial
- CBD; Downtown Mixed Use
- Special Districts
- Agriculture; Development Reserve
- Aviation; Unzoned; Public
- Multifamily Residence
- Planned Unit Development
- Lake Austin Residential; Residential Low Density
- Single Family Residence
- Unclassified



Home2 – SP-2024-0238C – 305 W Martin Luther King Jr. Blvd

City of Austin – Design Commission – October 28, 2024

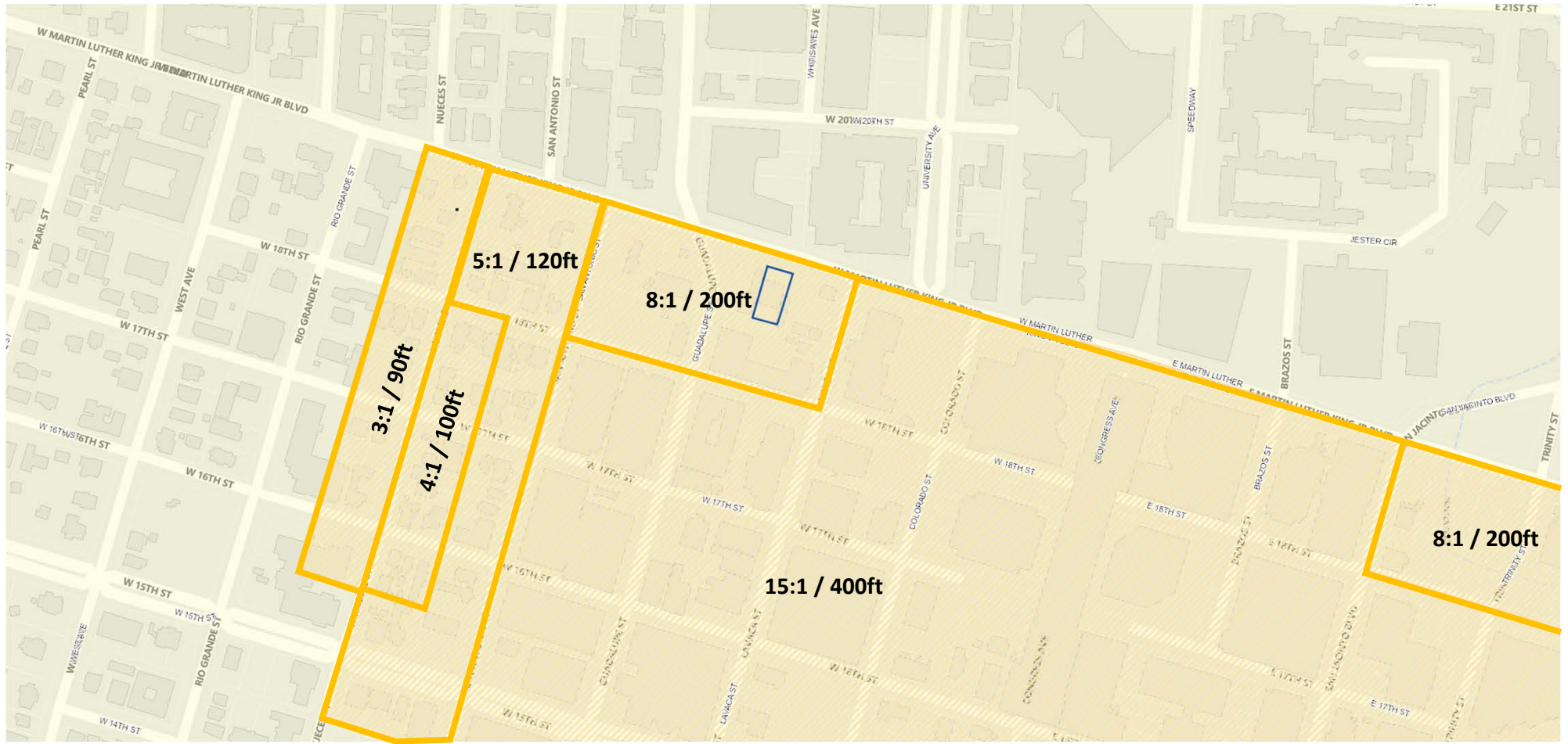
Land Use



Home2 – SP-2024-0238C – 305 W Martin Luther King Jr. Blvd

City of Austin – Design Commission – October 28, 2024

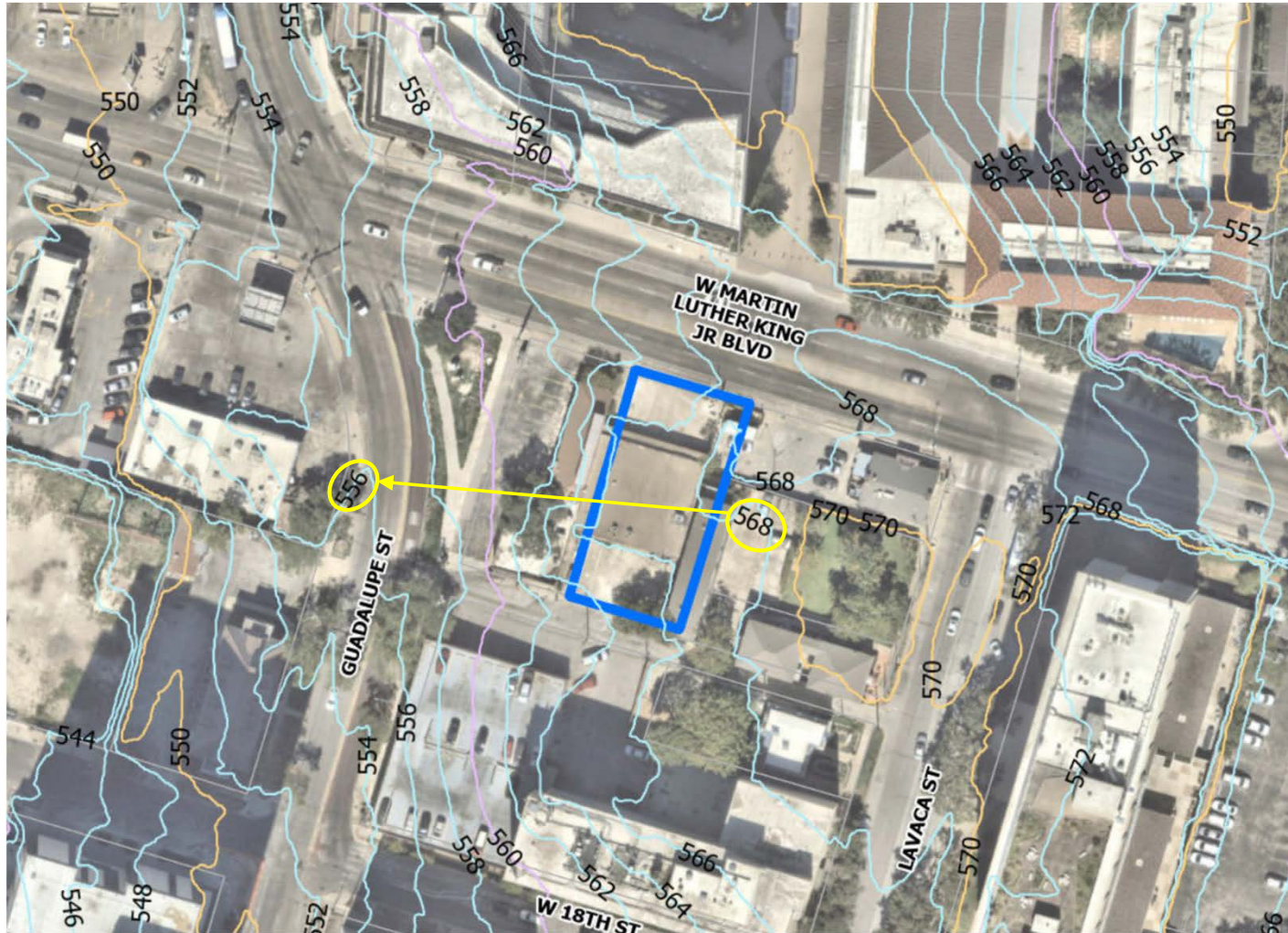
Zoning – DAP Density Bonus Districts



Home2 – SP-2024-0238C – 305 W Martin Luther King Jr. Blvd

City of Austin – Design Commission – October 28, 2024

Topography



Home2 – SP-2024-0238C – 305 W Martin Luther King Jr. Blvd

City of Austin – Design Commission – October 28, 2024



HOME 2

SUITES BY HILTON

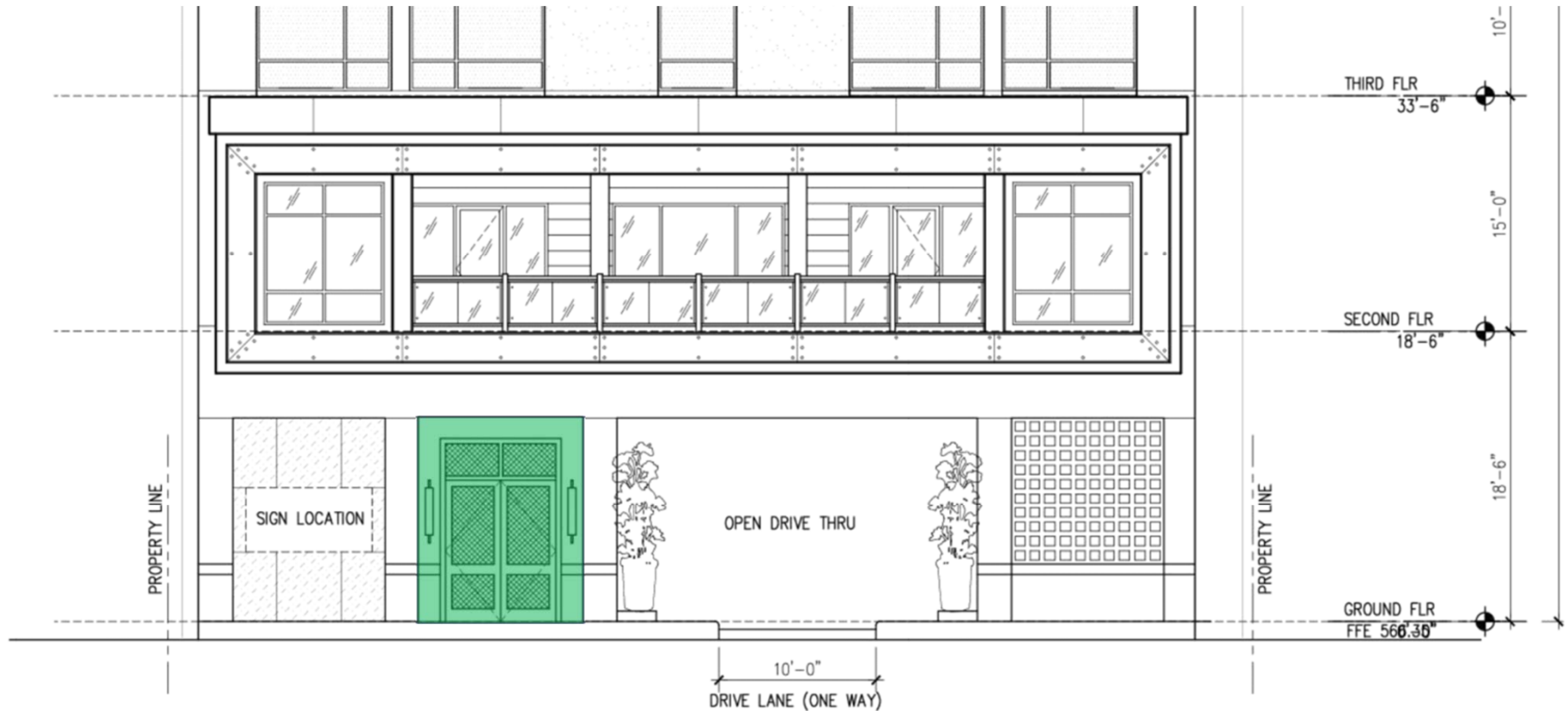
- 14 stories – 164.6 ft.
- 170 Hotel Rooms

Home2 – SP-2024-0238C – 305 W Martin Luther King Jr. Blvd

City of Austin – Design Commission – October 28, 2024

Throuwer Design
LAND PLANNERS

Front (north) Elevation – Sidewalk Entry



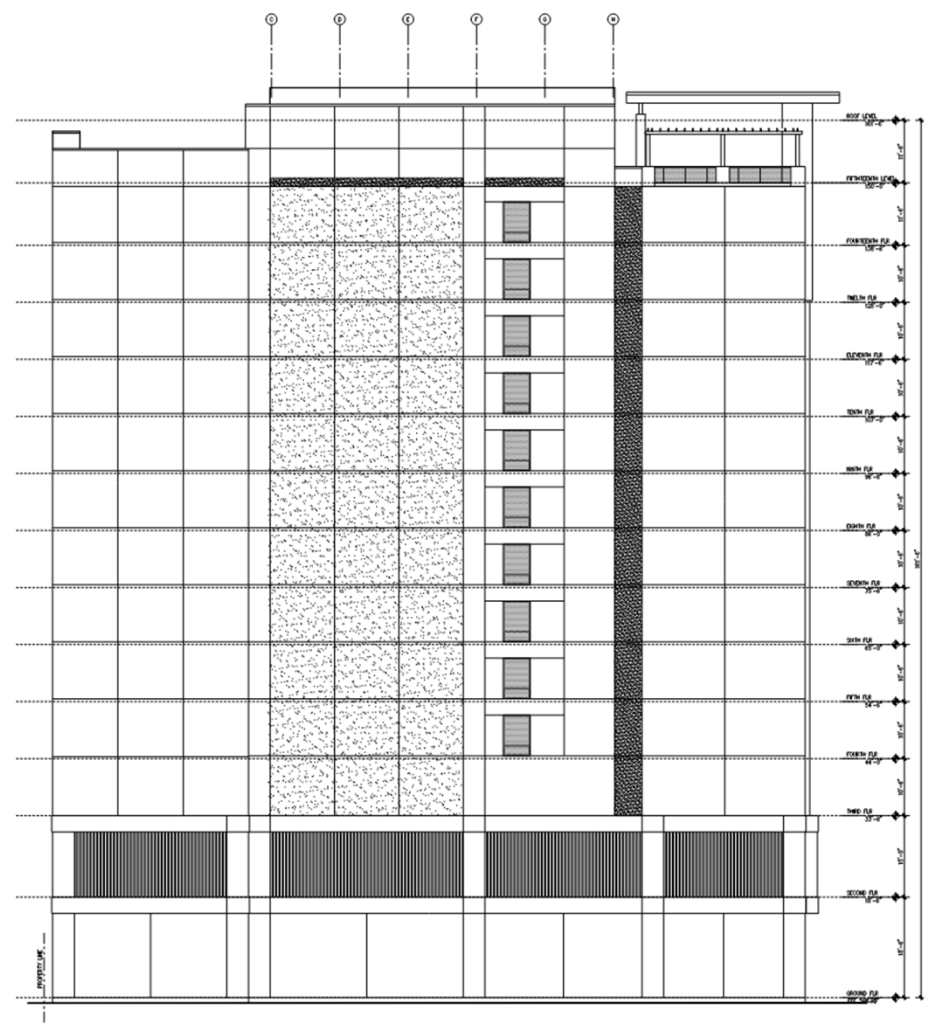
MLK Blvd.

Home2 – SP-2024-0238C – 305 W Martin Luther King Jr. Blvd

City of Austin – Design Commission – October 28, 2024

Throuwer Design
LAND PLANNERS

Rear Alley



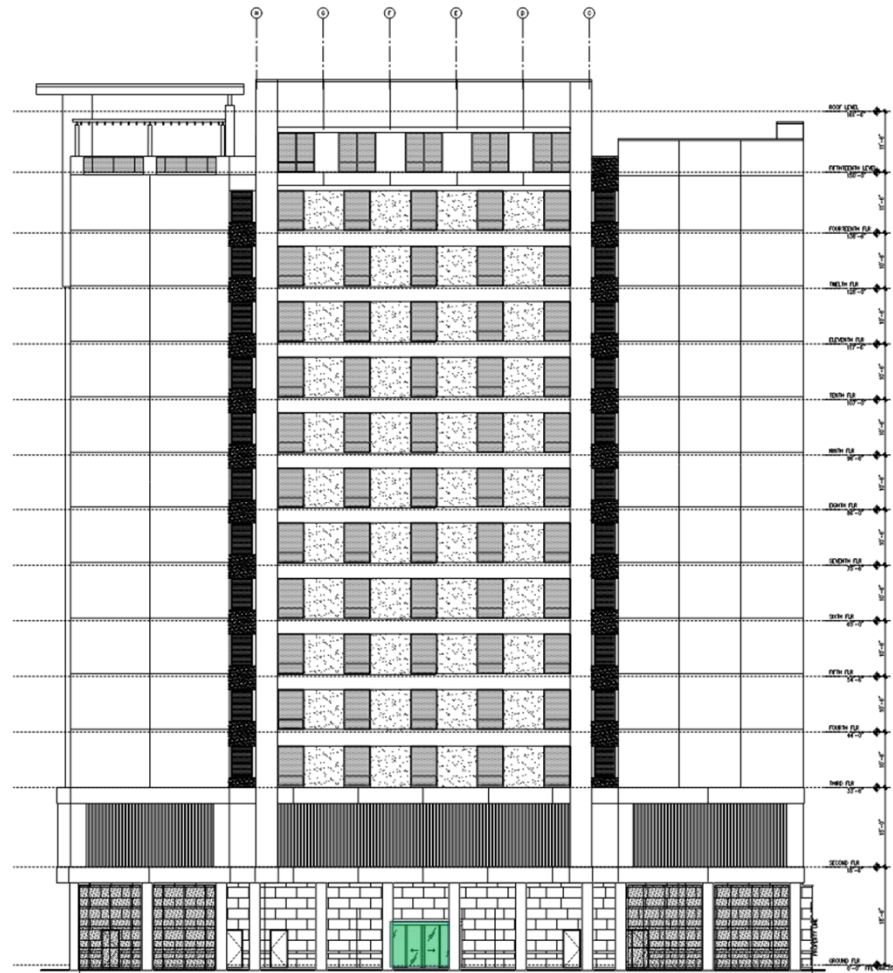
MLK Blvd.

EXTERIOR ELEVATION - EAST 1
SCALE: 1/8" = 1'-0"

Home2 – SP-2024-0238C – 305 W Martin Luther King Jr. Blvd
City of Austin – Design Commission – October 28, 2024



MLK Blvd.



Rear Alley

One-way valet drive-thru

Valet Entrance

EXTERIOR ELEVATION - WEST
SCALE 1/8" = 1'-0" 1

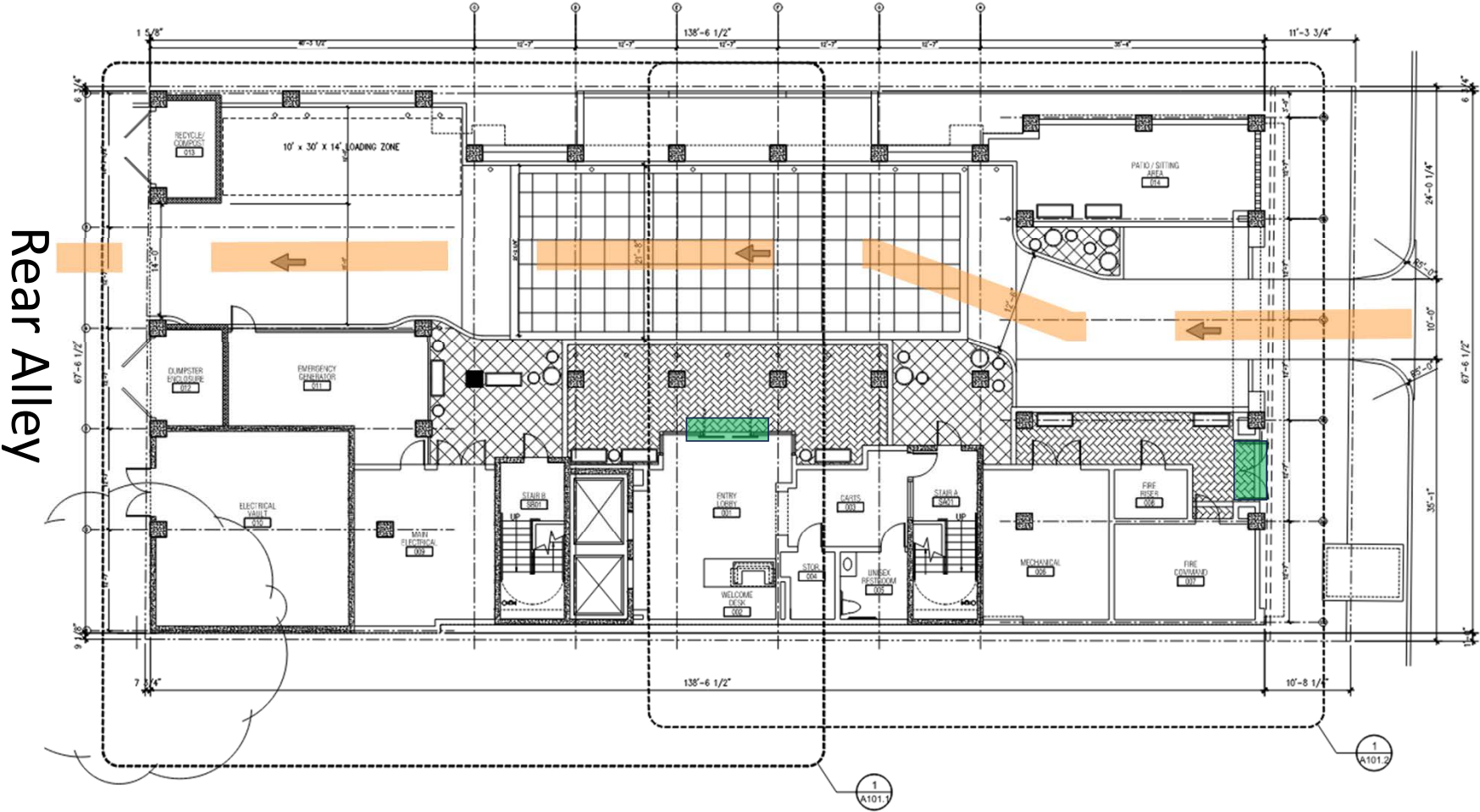
Home2 – SP-2024-0238C – 305 W Martin Luther King Jr. Blvd

City of Austin – Design Commission – October 28, 2024



Guest Entry Points

One-way Valet Route

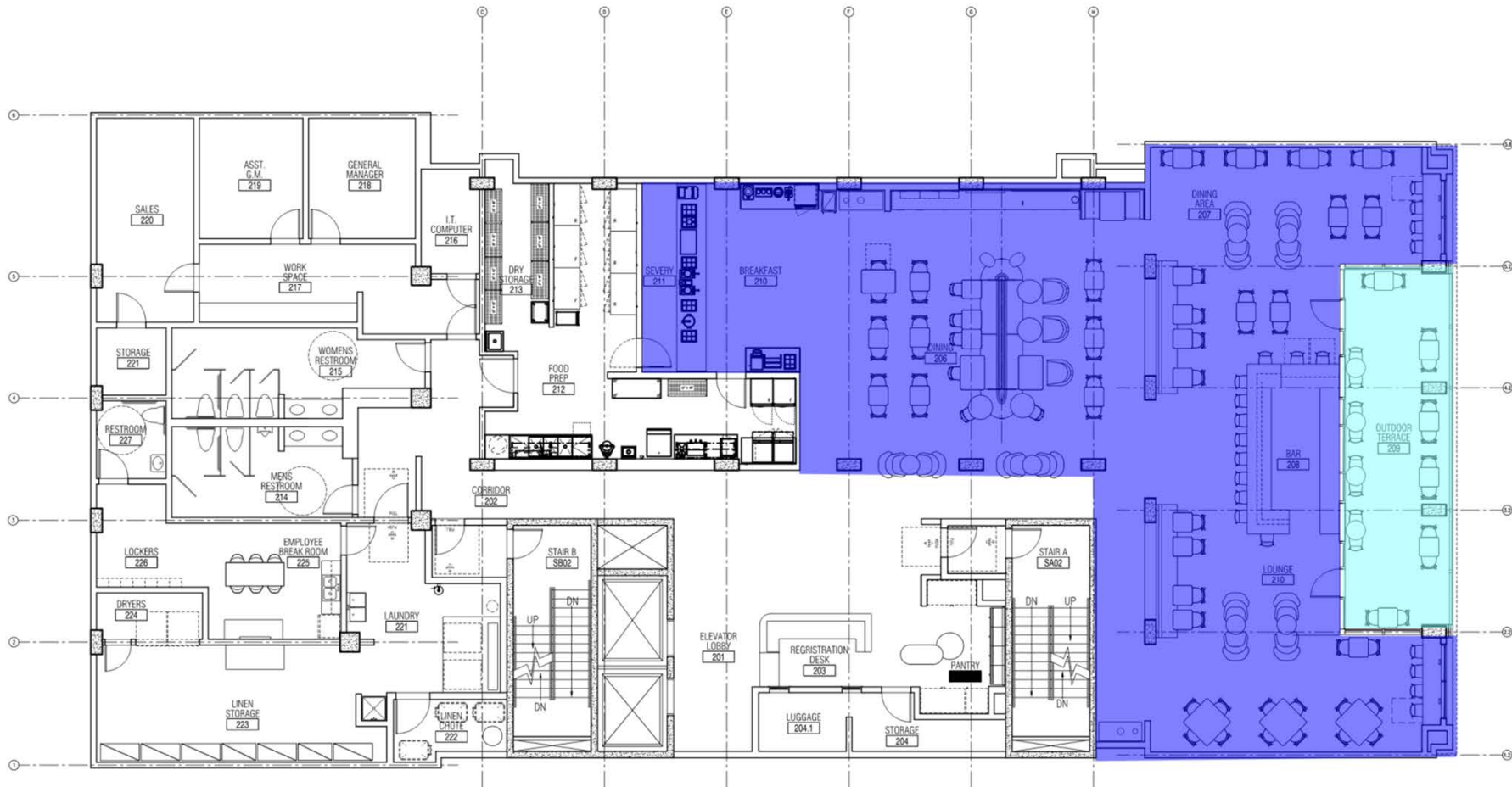


Home2 – SP-2024-0238C – 305 W Martin Luther King Jr. Blvd

City of Austin – Design Commission – October 28, 2024



2nd Floor – Restaurant/Bar/Outdoor Terrace



MLK Blvd.

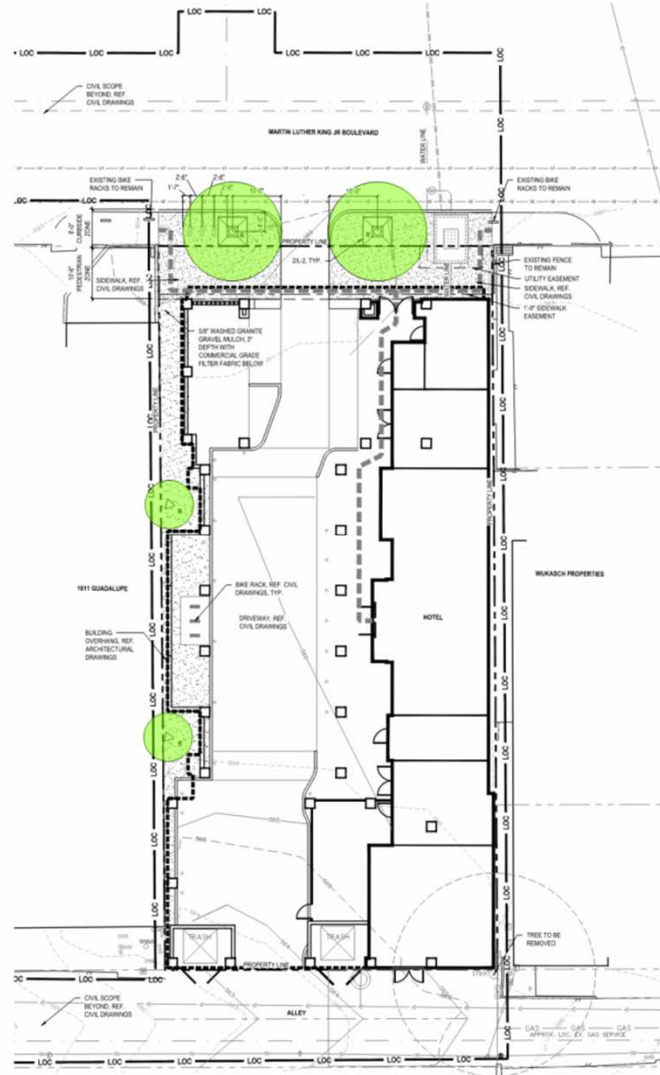
Home2 – SP-2024-0238C – 305 W Martin Luther King Jr. Blvd

City of Austin – Design Commission – October 28, 2024

Throuwer Design
LAND PLANNERS

Landscape Plan

PROPOSED TREE LEGEND			
SYMBOL	TOTAL		SPECIES & SIZE
	EXISTING	REPLACEMENT (R)	
	2	2	CEDAR ELM <i>Ulmus crassifolia</i> MIN. 5" CAL.
	2	2	TEXAS REDBUD <i>Cercis canadensis var. Texensis</i> MIN. 3" CAL.
SUBTOTAL:	2	2	



PROPOSED TREE LEGEND			
SYMBOL	TOTAL		SPECIES & SIZE
	EXISTING	REPLACEMENT (R)	
	2	2	CEDAR ELM <i>Ulmus crassifolia</i> MIN. 5" CAL.
	2	2	TEXAS REDBUD <i>Cercis canadensis var. Texensis</i> MIN. 3" CAL.
SUBTOTAL:	2	2	



CIRCLE V
Landscape Architecture, LLC
P.O. Box 170622 Austin, Texas 78717
816.565.1021 circlevia.com

PROJECT NUMBER: **CV2412**
CLIENT: **AMC DESIGN GROUP**
PROJECT: **HOME2**
305 W. MARTIN LUTHER KING JR. BOULEVARD
AUSTIN, TEXAS
78701

ISSUES AND REVISIONS:

NO.	DATE	ISSUE



15-18-2024
ISSUE FOR PERMIT

SHEET TITLE:
**L-1
LANDSCAPE PLAN**

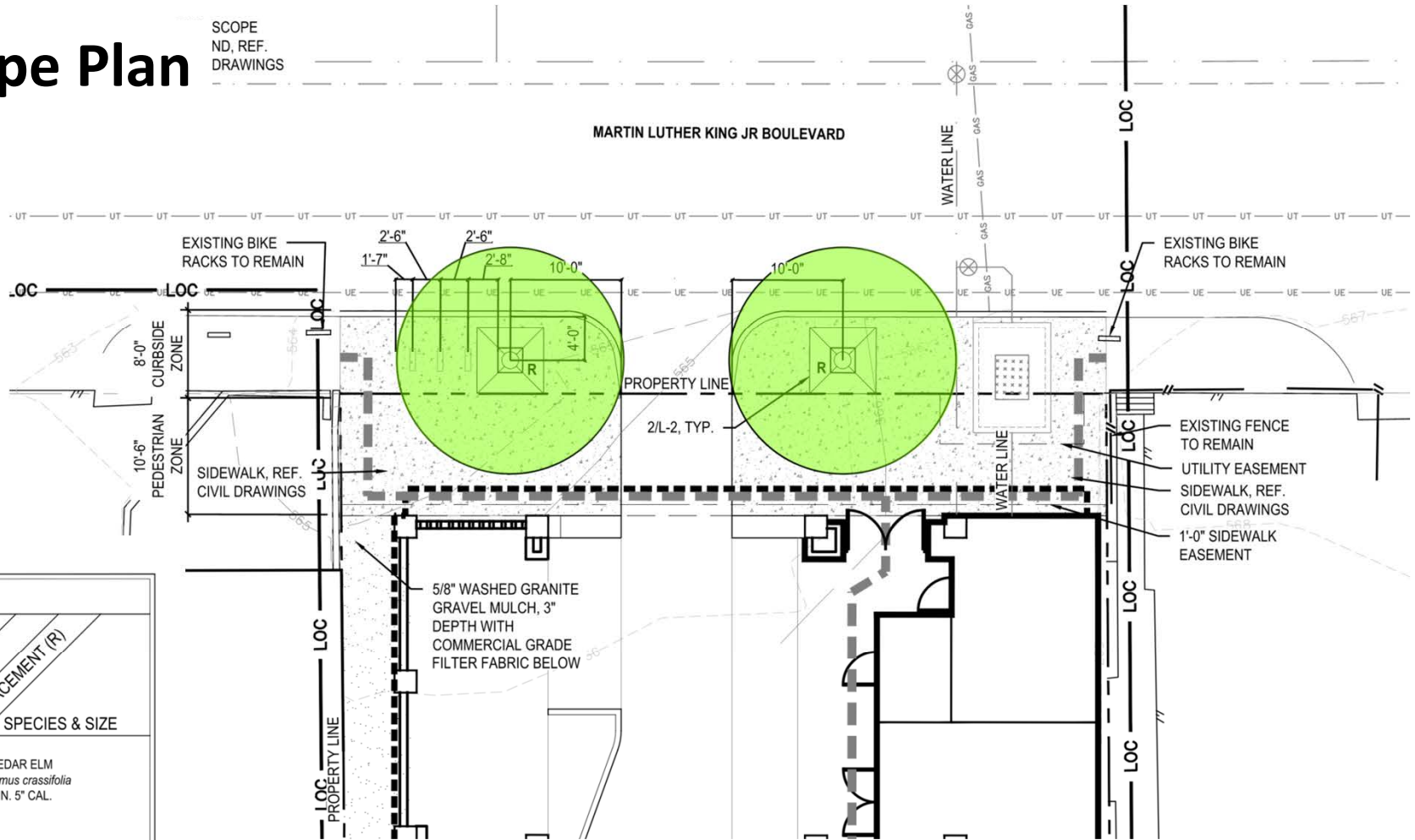
SHEET NUMBER:
17 of 22
SP-2024-XXXXX

Home2 – SP-2024-0238C – 305 W Martin Luther King Jr. Blvd
City of Austin – Design Commission – October 28, 2024



Landscape Plan

SCOPE
ND, REF.
DRAWINGS



PROPOSED TREE LEGEND			
SYMBOL	TOTAL REPLACEMENT (R)		SPECIES & SIZE
	2	2	CEDAR ELM <i>Ulmus crassifolia</i> MIN. 5" CAL.
	2	2	TEXAS REDBUD <i>Cercis canadensis</i> var. <i>'Texensis'</i> MIN. 3" CAL.
SUBTOTAL:	2	2	

Home2 – SP-2024-0238C – 305 W Martin Luther King Jr. Blvd

City of Austin – Design Commission – October 28, 2024

Thruway Design
LAND PLANNERS