

# Springfield Lift Station Abandonment

## CIP No. 3168.125



# Chapter 26 Application for Austin Water Infrastructure within Parkland at Onion Creek Metro Park & Marble Creek Greenbelt

Parks and Recreation Board Meeting  
City Hall Chambers  
October 28<sup>th</sup>, 2024



CAPITAL DELIVERY  
SERVICES

*“Effectively and Efficiently Deliver Quality Projects with the Concept of Speed”*

# Agenda

- Project Summary
- Background
- Route Evaluation
- Parkland Impacts
- Project Timeline
- QA



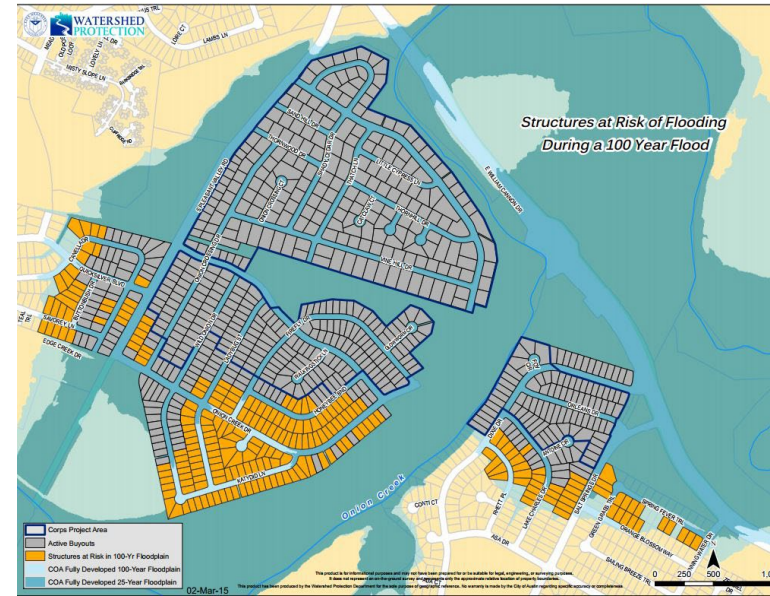
# Project Summary

- To install a wastewater interceptor that will allow for the abandonment of an existing lift station
- Approximately 3,400 linear feet of 36-in PVC wastewater line
- 4 bore pits
- Approximately 1,000 linear feet of trenchless construction
- Approximately 2,400 linear feet of open cut



# Background

- Historic floods within the Onion Creek floodplain
- Lift station currently lies more than 10 feet below the 100-year floodplain
- Rapid redevelopment is expected resulting in significant increases in wastewater flows
- No access during flood. Continued near-term operation of the lift station will require significant rehabilitation to elevate electrical equipment above the floodplain
- Due to space constraints and costs, upgrading the lift station to meet future capacity requirements is not a practical solution



CAPITAL DELIVERY  
SERVICES

*“Effectively and Efficiently Deliver Quality Projects with the Concept of Speed”*



# Route Evaluation

- Option 1 (Red)
  - Greater area of parkland
  - Require easements from outside entities
  - In conflict with two petroleum pipelines
- Option 2 (Yellow)
  - Utilizes the city's Right Of Way
  - Only city-owned land



CAPITAL DELIVERY  
SERVICES

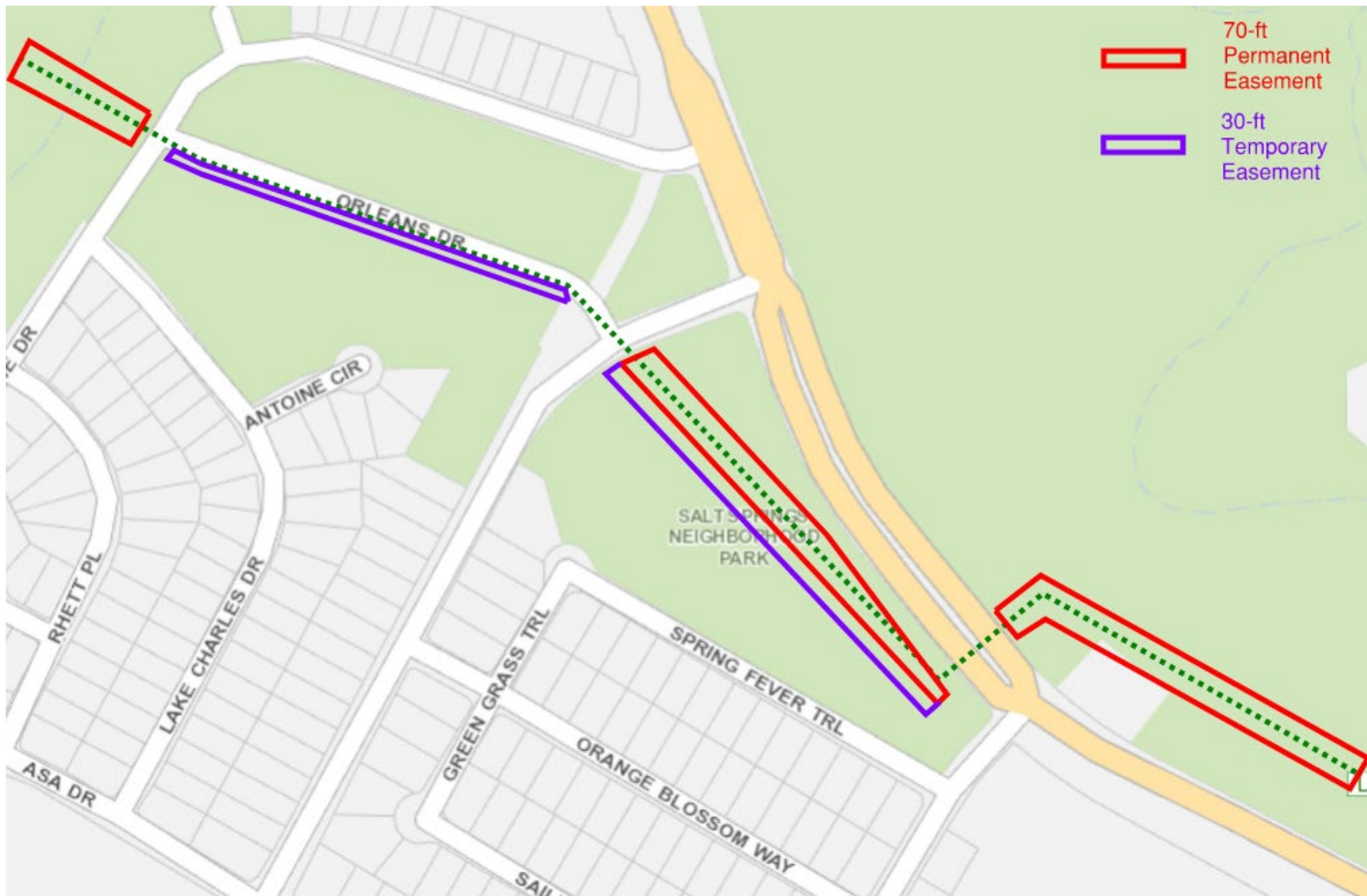
*“Effectively and Efficiently Deliver Quality Projects with the Concept of Speed”*





**CAPITAL DELIVERY  
SERVICES**

*“Effectively and Efficiently Deliver Quality Projects with the Concept of Speed”*



CAPITAL DELIVERY  
SERVICES

*“Effectively and Efficiently Deliver Quality Projects with the Concept of Speed”*

# Minimizing Impacts to Parkland

- Jack and Bore to preserve trees and prevent road closures
  - 0 heritage trees will be removed
- Protective fencing will be used to prevent damage to nearby trees and natural areas
- Contractor will follow a robust engineered design to prevent settlement and erosion
- Abandoned lift station will be completely revegetated
- All disturbed parkland will be restored and revegetated





# Project Timeline

- Design Phase Ends Summer 2024
- Bid/Award Phase Fall 2024
- Construction Phase Winter 2025



# Chapter 26

## Section 26.001. Protected Land; Notice of Taking.

- State entities cannot approve programs or projects that use or take public land designated for parks, recreation, scientific areas, wildlife refuges, or historic sites unless their authorized governing body or officer determines:
  - 1) There is no feasible and prudent alternative to the use or taking of such land
  - 2) The program or project includes all reasonable planning to minimize harm to the land, as a park, recreation area, scientific area, wildlife refuge, or historic site, resulting from the use or taking



# QUESTIONS + ANSWERS

---

Claudia Corsetti, P.E., CFM, PMP  
Project Manager, City of Austin  
[Claudia.corsetti@austintexas.gov](mailto:Claudia.corsetti@austintexas.gov)  
512.974.7205

Axton Vorpahl, P.E.  
Austin Water Sponsor, City of Austin  
[Axton.vorpahl@austintexas.gov](mailto:Axton.vorpahl@austintexas.gov)  
509.230.2396



CAPITAL DELIVERY  
SERVICES

*“Effectively and Efficiently Deliver Quality Projects with the Concept of Speed”*